

Data Path : Z:\pestpcbsrv\HPCHEM1\ECD_D\Data\PD040919\
 Data File : PD052775.D
 Signal(s) : Signal #1: ECD1A.CH Signal #2: ECD2B.CH
 Acq On : 09 Apr 2019 8:01
 Operator : AJ\SJ
 Sample : K2292-11
 Misc :
 ALS Vial : 21 Sample Multiplier: 1

Integration File signal 1: autoint1.e
 Integration File signal 2: autoint2.e
 Quant Time: Apr 10 01:36:00 2019
 Quant Method : Z:\pestpcbsrv\HPCHEM1\ECD_D\Method\PD040819CLP.M
 Quant Title : GC Extractables
 QLast Update : Tue Apr 09 07:32:05 2019
 Response via : Initial Calibration
 Integrator: ChemStation 6890 Scale Mode: Large solvent peaks clipped

Volume Inj. : 1 µl
 Signal #1 Phase : ZB-MR2 Signal #2 Phase: ZB-MR1
 Signal #1 Info : 30M x 0.32mm x0.2 Signal #2 Info : 30M x 0.32mm x 0.50µm

Compound	RT#1	RT#2	Resp#1	Resp#2	ng/ml	ng/ml
----------	------	------	--------	--------	-------	-------

System Monitoring Compounds

Target Compounds

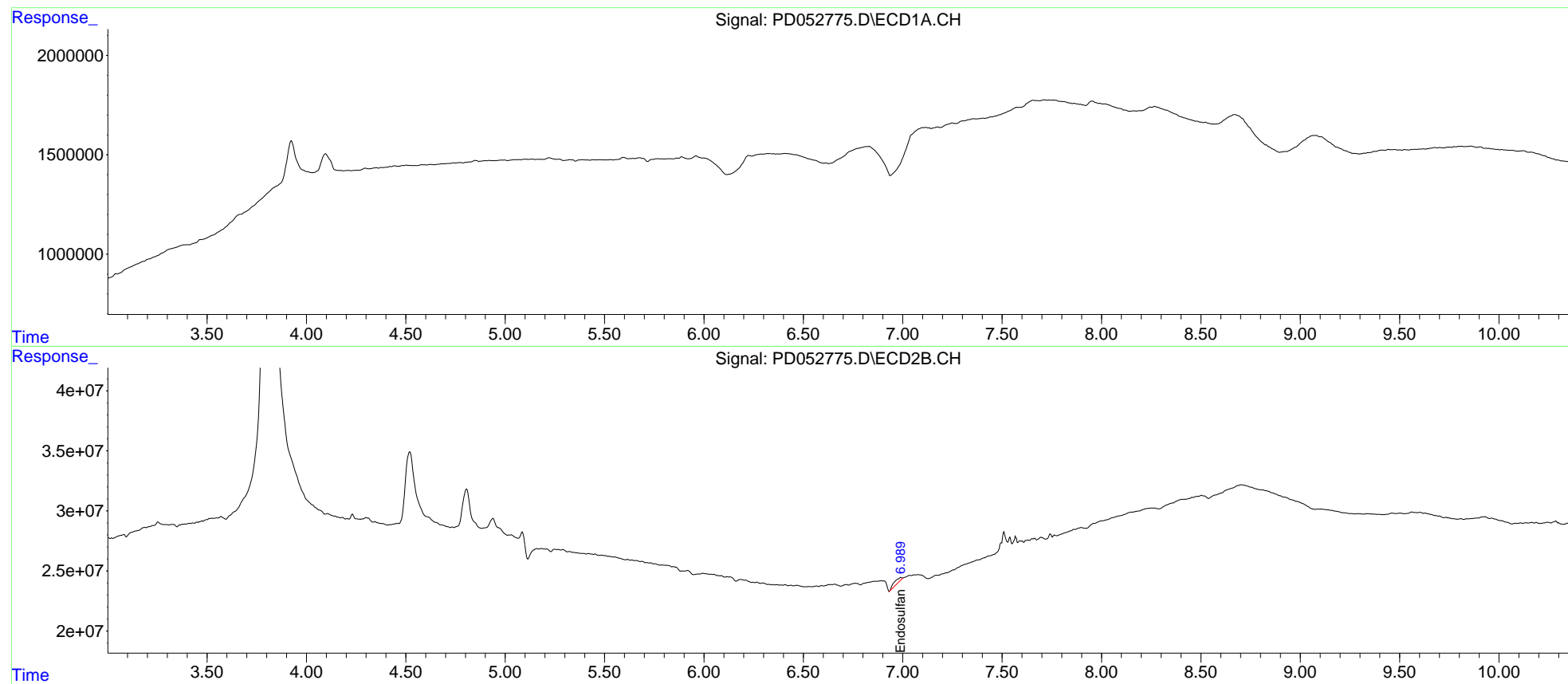
15) B	Endosulfa...	0.000	6.991	0	9058511	N.D.	0.344
-------	--------------	-------	-------	---	---------	------	-------

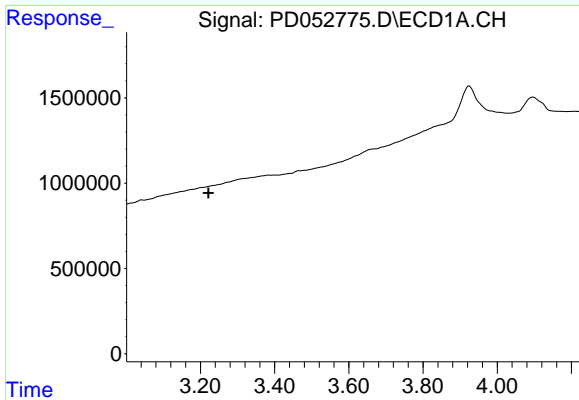
(f)=RT Delta > 1/2 Window (#)=Amounts differ by > 25% (m)=manual int.

Data Path : Z:\pestpcbsrv\HPCHEM1\ECD_D\Data\PD040919\
Data File : PD052775.D
Signal(s) : Signal #1: ECD1A.CH Signal #2: ECD2B.CH
Acq On : 09 Apr 2019 8:01
Operator : AJ\SJ
Sample : K2292-11
Misc :
ALS Vial : 21 Sample Multiplier: 1

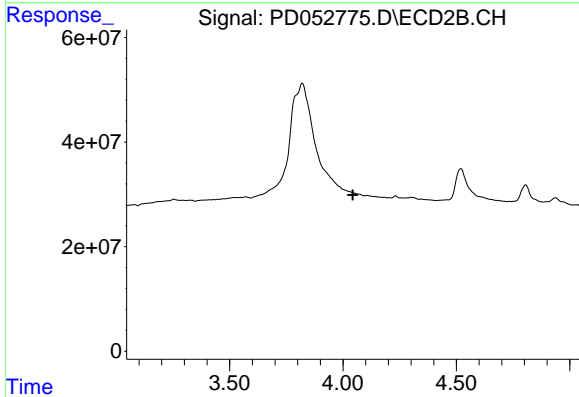
Integration File signal 1: autoint1.e
Integration File signal 2: autoint2.e
Quant Time: Apr 10 01:36:00 2019
Quant Method : Z:\pestpcbsrv\HPCHEM1\ECD_D\Method\PD040819CLP.M
Quant Title : GC Extractables
QLast Update : Tue Apr 09 07:32:05 2019
Response via : Initial Calibration
Integrator: ChemStation 6890 Scale Mode: Large solvent peaks clipped

Volume Inj. : 1 µl
Signal #1 Phase : ZB-MR2 Signal #2 Phase: ZB-MR1
Signal #1 Info : 30M x 0.32mm x0.2 Signal #2 Info : 30M x 0.32mm x 0.50µm

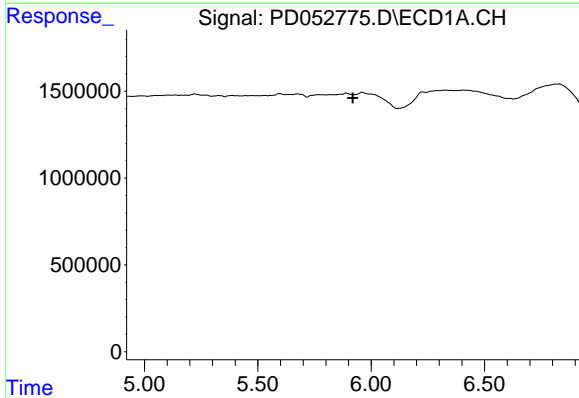




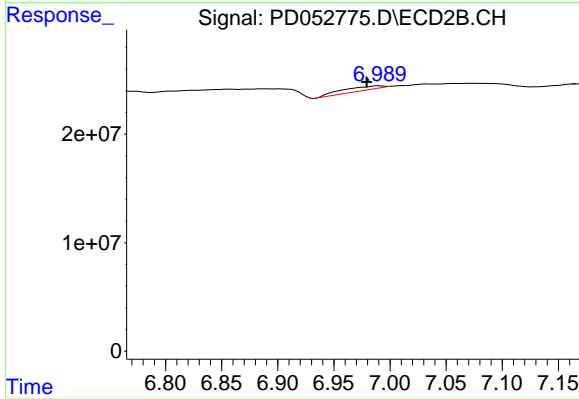
#1 Tetrachloro-m-xylene
 R.T.: 0.000 min
 Exp R.T. : 3.221 min
 Response: 0
 Conc: N.D.



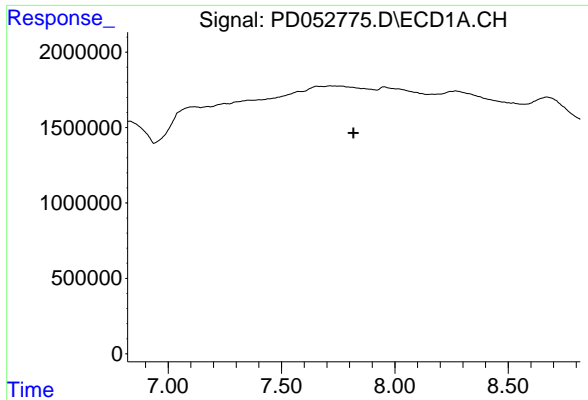
#1 Tetrachloro-m-xylene
 R.T.: 0.000 min
 Exp R.T. : 4.043 min
 Response: 0
 Conc: N.D.



#15 Endosulfan II
 R.T.: 0.000 min
 Exp R.T. : 5.919 min
 Response: 0
 Conc: N.D.

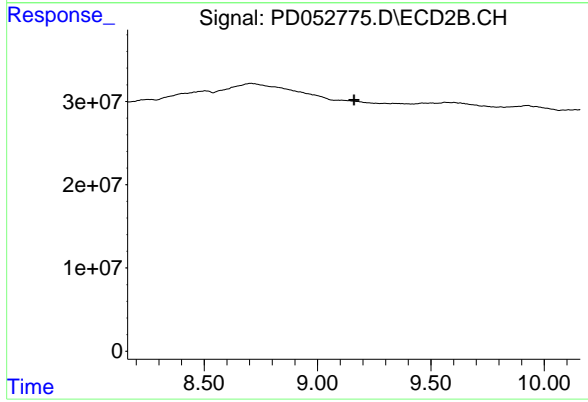


#15 Endosulfan II
 R.T.: 6.991 min
 Delta R.T.: 0.011 min
 Response: 9058511
 Conc: 0.34 ng/ml



#27 Decachlorobiphenyl

R.T.: 0.000 min
Exp R.T. : 7.818 min
Response: 0
Conc: N.D.



#27 Decachlorobiphenyl

R.T.: 0.000 min
Exp R.T. : 9.162 min
Response: 0
Conc: N.D.