

Data Path : Z:\pestpcbsrv\HPCHEM1\ECD_D\Data\PD040919\
 Data File : PD052776.D
 Signal(s) : Signal #1: ECD1A.CH Signal #2: ECD2B.CH
 Acq On : 09 Apr 2019 8:15
 Operator : AJ\SJ
 Sample : K2292-07
 Misc :
 ALS Vial : 22 Sample Multiplier: 1

Integration File signal 1: autoint1.e
 Integration File signal 2: autoint2.e
 Quant Time: Apr 10 01:36:06 2019
 Quant Method : Z:\pestpcbsrv\HPCHEM1\ECD_D\Method\PD040819CLP.M
 Quant Title : GC Extractables
 QLast Update : Tue Apr 09 07:32:05 2019
 Response via : Initial Calibration
 Integrator: ChemStation 6890 Scale Mode: Large solvent peaks clipped

Volume Inj. : 1 µl
 Signal #1 Phase : ZB-MR2 Signal #2 Phase: ZB-MR1
 Signal #1 Info : 30M x 0.32mm x0.2 Signal #2 Info : 30M x 0.32mm x 0.50µm

Compound	RT#1	RT#2	Resp#1	Resp#2	ng/ml	ng/ml

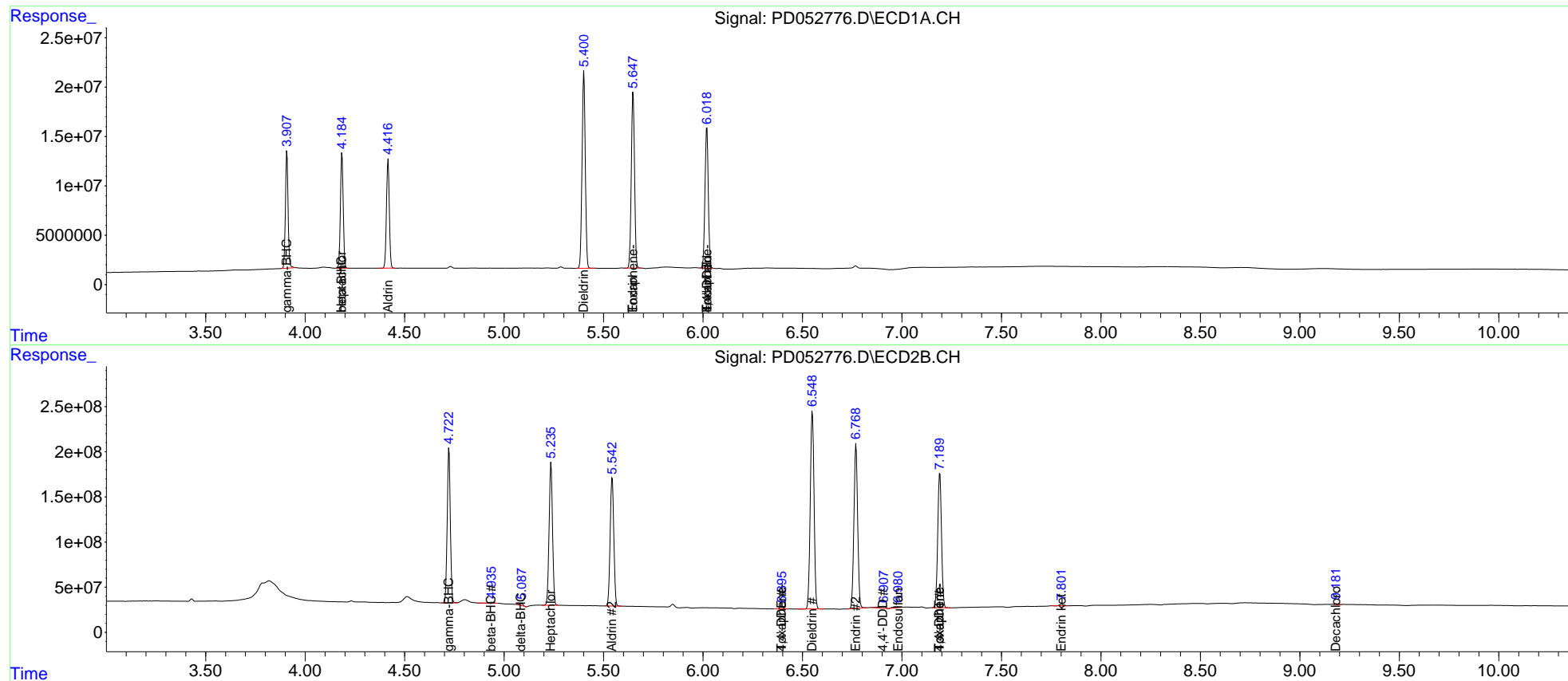
System Monitoring Compounds						
27) SA Decachlor...	0.000	9.182	0	6496954	N.D.	0.451
Target Compounds						
3) MA gamma-BHC...	3.909	4.723	109.6E6	1875.6E6	44.894	43.652
4) MA Heptachlor	4.186	5.236	114.9E6	1892.6E6	47.406	43.370
5) MB Aldrin	4.417	5.544	110.4E6	1797.7E6	48.945	44.647
6) B beta-BHC	4.186f	4.936f	114.9E6	17829983	110.752	0.912 #
7) B delta-BHC	0.000	5.087f	0	31985960	N.D.	0.887
12) B 4,4'-DDE	0.000	6.396	0	30538364	N.D.	0.931
13) MA Dieldrin	5.402	6.550	226.7E6	2917.1E6	97.473	89.447
14) MA Endrin	5.649	6.769	202.6E6	2376.4E6	101.914	94.016
15) B Endosulfa...	0.000	6.981	0	28824609	N.D.	1.095
16) A 4,4'-DDD	0.000	6.905	0	55131593	N.D.	2.209
17) MA 4,4'-DDT	6.020	7.190	166.4E6	1971.4E6	100.721	100.250
18) B Endrin al...	6.020f	0.000	166.4E6	0	103.932	N.D. #
21) B Endrin ke...	0.000	7.803	0	19229262	N.D.	0.981
22) Toxaphene-1	0.000	6.396	0	30538364	N.D.	208.404
23) Toxaphene-2	5.649	0.000	202.6E6	0	9128.656	N.D. #
24) Toxaphene-3	6.020	7.190	166.4E6	1971.4E6	4613.530	8860.175 #
25) Toxaphene-4	0.000	7.190	0	1971.4E6	N.D.	3326.569

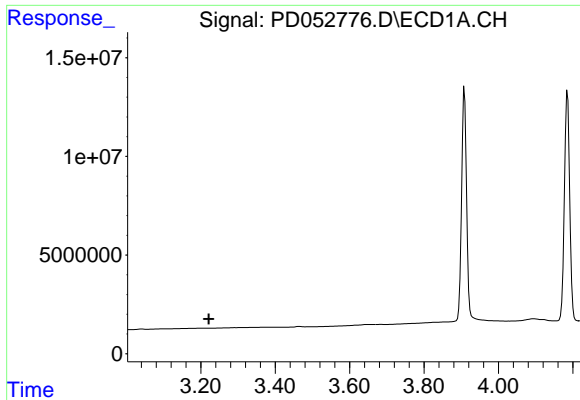
(f)=RT Delta > 1/2 Window (#)=Amounts differ by > 25% (m)=manual int.

Data Path : Z:\pestpcbsrv\HPCHEM1\ECD_D\Data\PD040919\
 Data File : PD052776.D
 Signal(s) : Signal #1: ECD1A.CH Signal #2: ECD2B.CH
 Acq On : 09 Apr 2019 8:15
 Operator : AJ\SJ
 Sample : K2292-07
 Misc :
 ALS Vial : 22 Sample Multiplier: 1

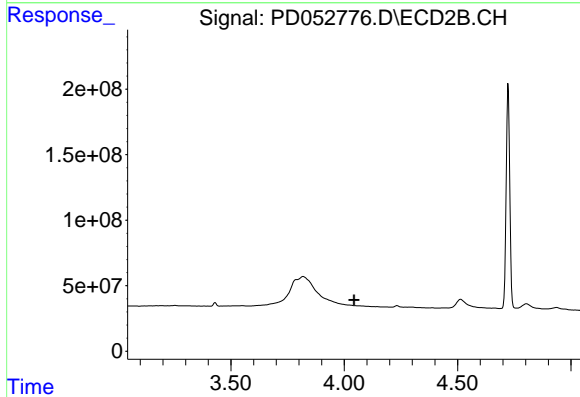
Integration File signal 1: autoint1.e
 Integration File signal 2: autoint2.e
 Quant Time: Apr 10 01:36:06 2019
 Quant Method : Z:\pestpcbsrv\HPCHEM1\ECD_D\Method\PD040819CLP.M
 Quant Title : GC Extractables
 QLast Update : Tue Apr 09 07:32:05 2019
 Response via : Initial Calibration
 Integrator: ChemStation 6890 Scale Mode: Large solvent peaks clipped

Volume Inj. : 1 µl
 Signal #1 Phase : ZB-MR2 Signal #2 Phase: ZB-MR1
 Signal #1 Info : 30M x 0.32mm x0.2 Signal #2 Info : 30M x 0.32mm x 0.50µm

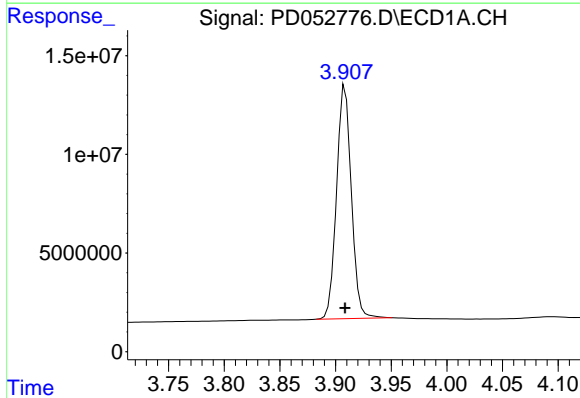




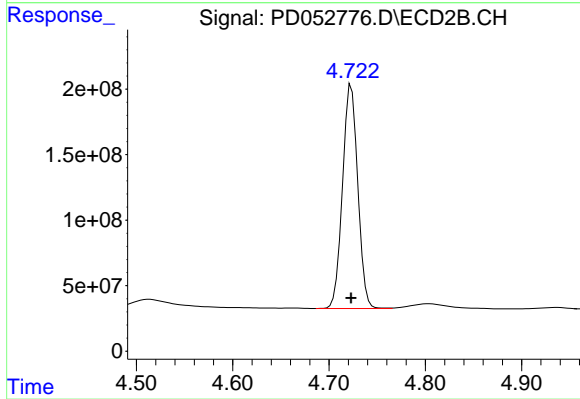
#1 Tetrachloro-m-xylene
 R.T.: 0.000 min
 Exp R.T. : 3.221 min
 Response: 0
 Conc: N.D.



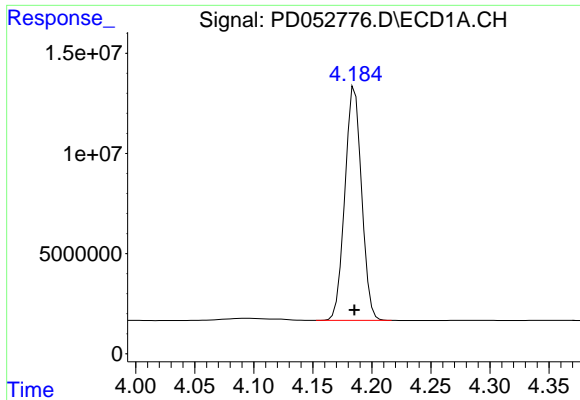
#1 Tetrachloro-m-xylene
 R.T.: 0.000 min
 Exp R.T. : 4.043 min
 Response: 0
 Conc: N.D.



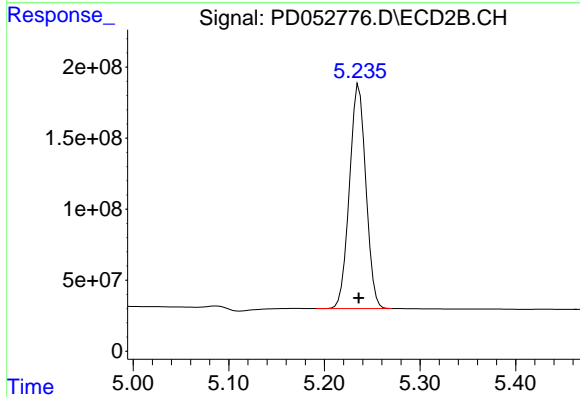
#3 gamma-BHC (Lindane)
 R.T.: 3.909 min
 Delta R.T.: 0.000 min
 Response: 109616747
 Conc: 44.89 ng/ml



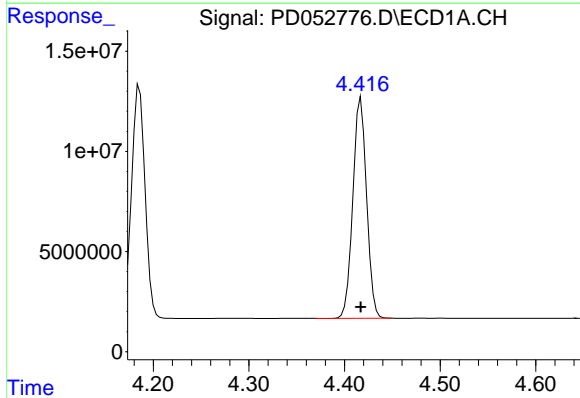
#3 gamma-BHC (Lindane)
 R.T.: 4.723 min
 Delta R.T.: 0.000 min
 Response: 1875601726
 Conc: 43.65 ng/ml



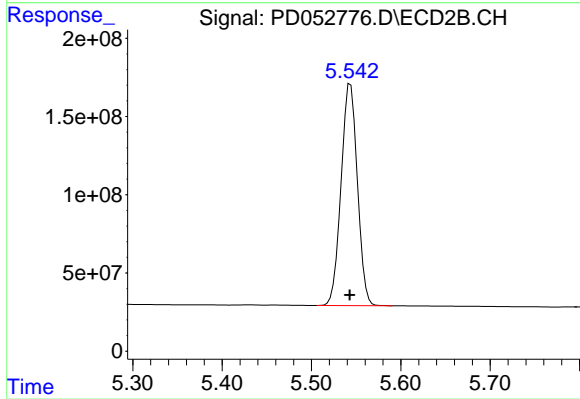
#4 Heptachlor
R.T.: 4.186 min
Delta R.T.: 0.000 min
Response: 114899081
Conc: 47.41 ng/ml



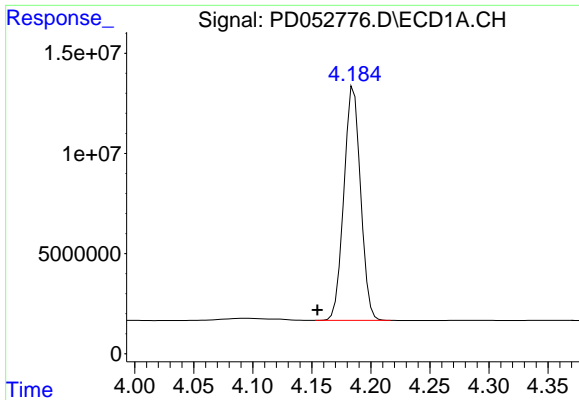
#4 Heptachlor
R.T.: 5.236 min
Delta R.T.: 0.000 min
Response: 1892629340
Conc: 43.37 ng/ml



#5 Aldrin
R.T.: 4.417 min
Delta R.T.: 0.000 min
Response: 110352293
Conc: 48.94 ng/ml

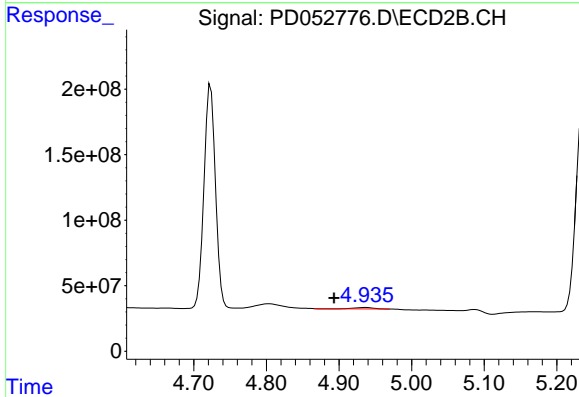


#5 Aldrin
R.T.: 5.544 min
Delta R.T.: 0.000 min
Response: 1797719434
Conc: 44.65 ng/ml



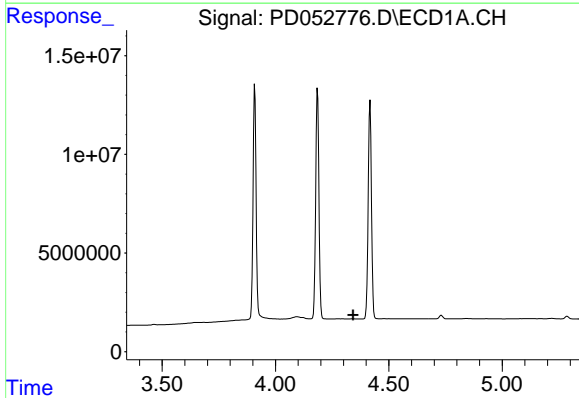
#6 beta-BHC

R.T.: 4.186 min
 Delta R.T.: 0.031 min
 Response: 114899081
 Conc: 110.75 ng/ml



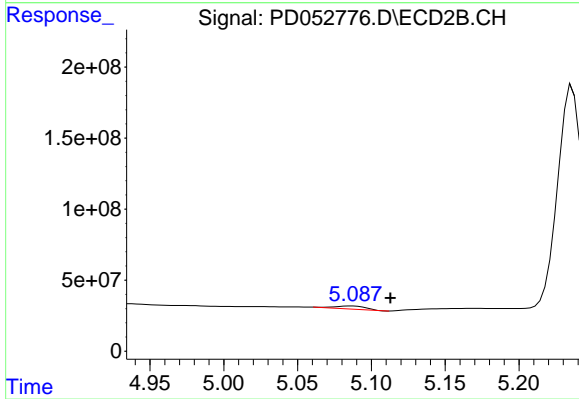
#6 beta-BHC

R.T.: 4.936 min
 Delta R.T.: 0.043 min
 Response: 17829983
 Conc: 0.91 ng/ml



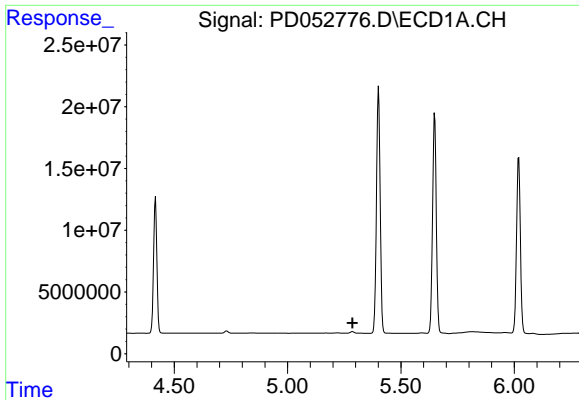
#7 delta-BHC

R.T.: 0.000 min
 Exp R.T. : 4.343 min
 Response: 0
 Conc: N.D.

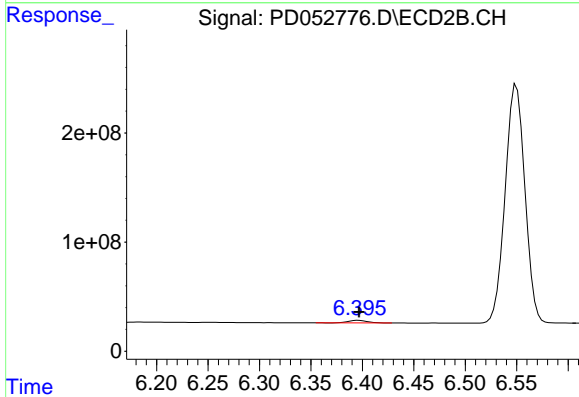


#7 delta-BHC

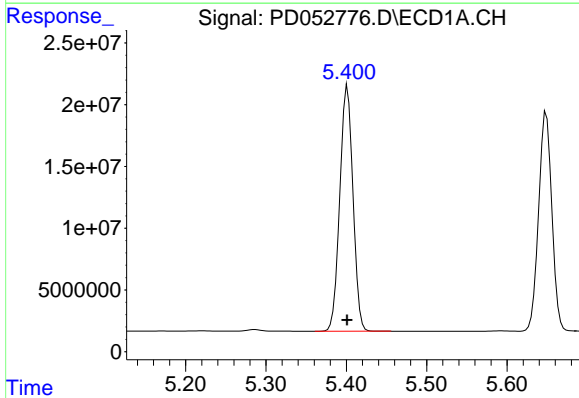
R.T.: 5.087 min
 Delta R.T.: -0.026 min
 Response: 31985960
 Conc: 0.89 ng/ml



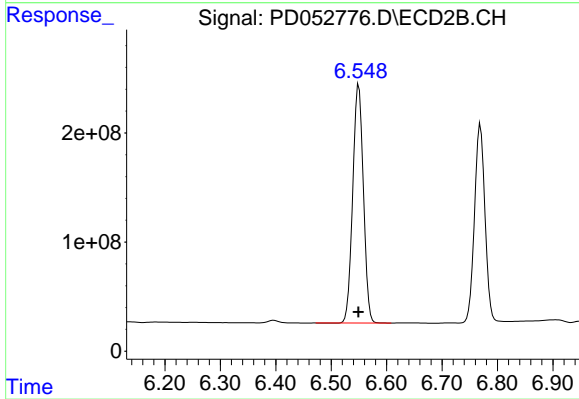
#12 4,4'-DDE
 R.T.: 0.000 min
 Exp R.T.: 5.287 min
 Response: 0
 Conc: N.D.



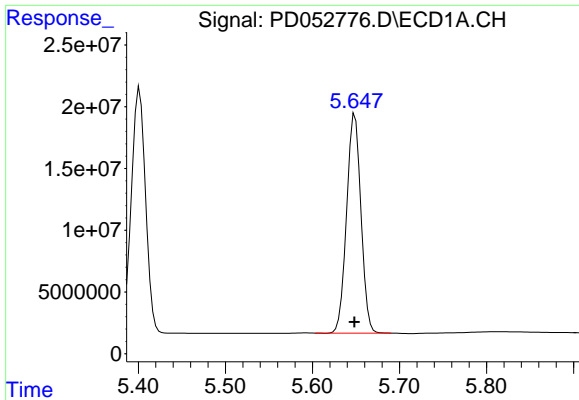
#12 4,4'-DDE
 R.T.: 6.396 min
 Delta R.T.: 0.000 min
 Response: 30538364
 Conc: 0.93 ng/ml



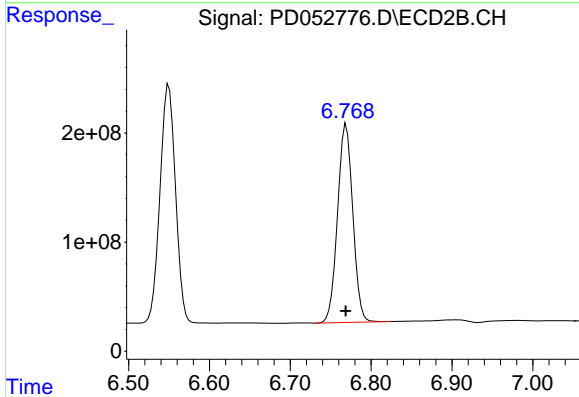
#13 Dieldrin
 R.T.: 5.402 min
 Delta R.T.: 0.000 min
 Response: 226665383
 Conc: 97.47 ng/ml



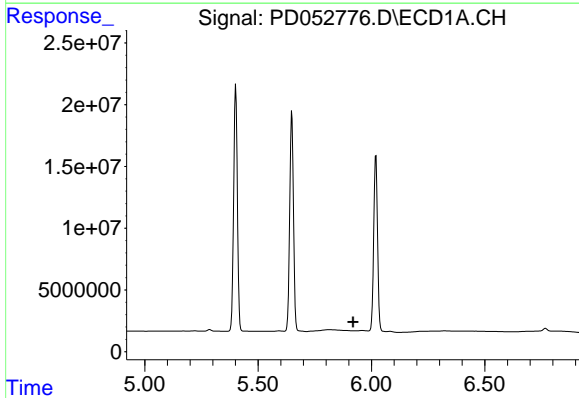
#13 Dieldrin
 R.T.: 6.550 min
 Delta R.T.: 0.000 min
 Response: 2917106172
 Conc: 89.45 ng/ml



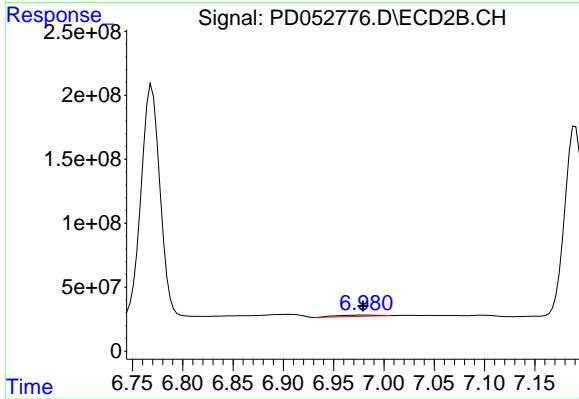
#14 Endrin
 R.T.: 5.649 min
 Delta R.T.: 0.000 min
 Response: 202637794
 Conc: 101.91 ng/ml



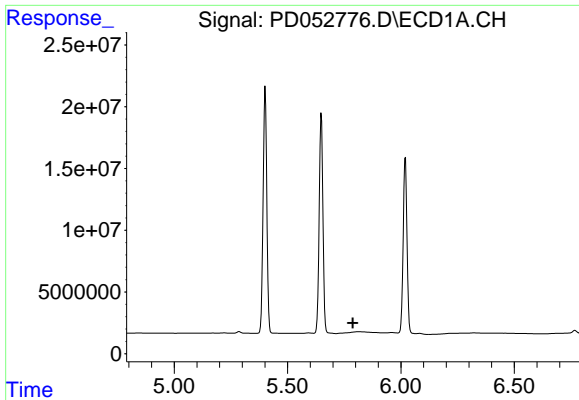
#14 Endrin
 R.T.: 6.769 min
 Delta R.T.: 0.000 min
 Response: 2376408265
 Conc: 94.02 ng/ml



#15 Endosulfan II
 R.T.: 0.000 min
 Exp R.T. : 5.919 min
 Response: 0
 Conc: N.D.

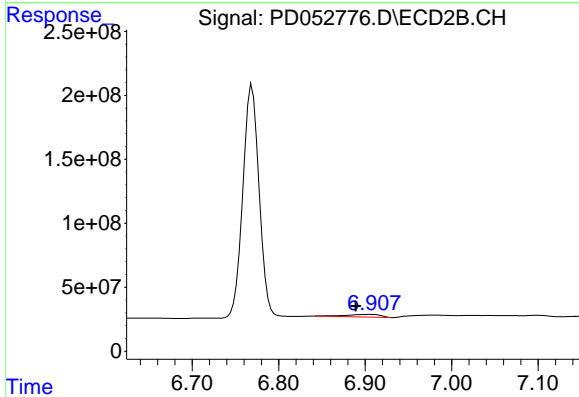


#15 Endosulfan II
 R.T.: 6.981 min
 Delta R.T.: 0.002 min
 Response: 28824609
 Conc: 1.09 ng/ml



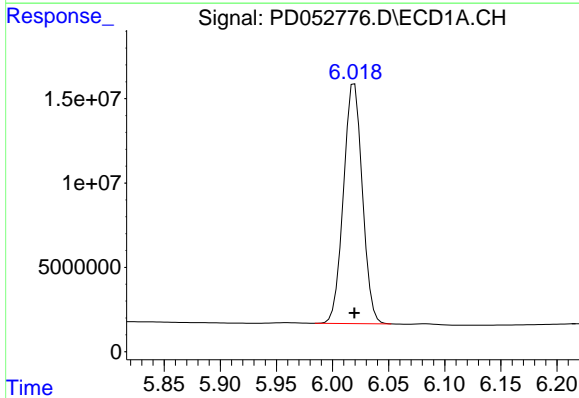
#16 4,4'-DDD

R.T.: 0.000 min
 Exp R.T.: 5.789 min
 Response: 0
 Conc: N.D.



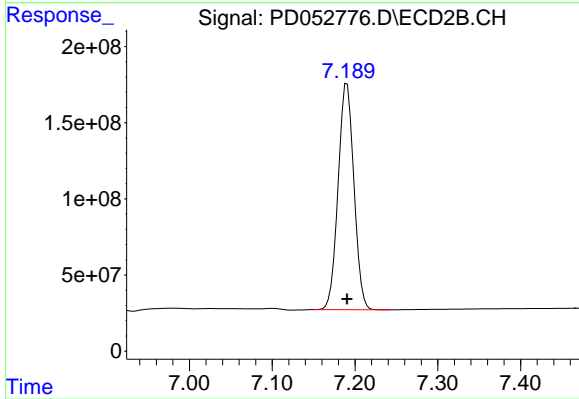
#16 4,4'-DDD

R.T.: 6.905 min
 Delta R.T.: 0.016 min
 Response: 55131593
 Conc: 2.21 ng/ml



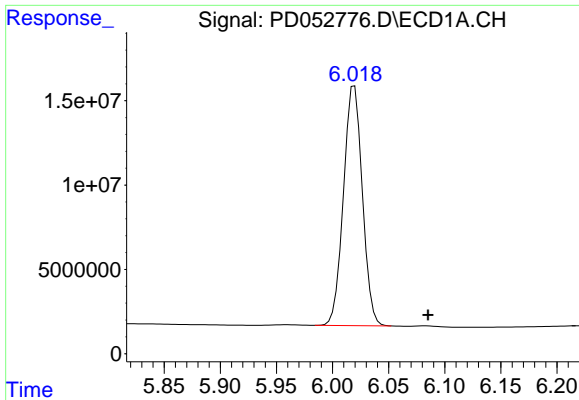
#17 4,4'-DDT

R.T.: 6.020 min
 Delta R.T.: 0.000 min
 Response: 166403080
 Conc: 100.72 ng/ml



#17 4,4'-DDT

R.T.: 7.190 min
 Delta R.T.: 0.000 min
 Response: 1971371207
 Conc: 100.25 ng/ml



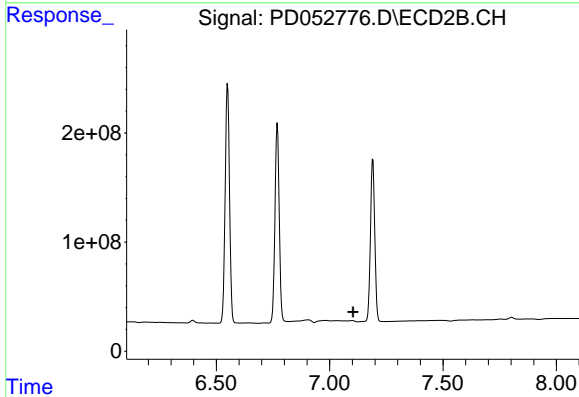
#18 Endrin aldehyde

R.T.: 6.020 min

Delta R.T.: -0.066 min

Response: 166403080

Conc: 103.93 ng/ml



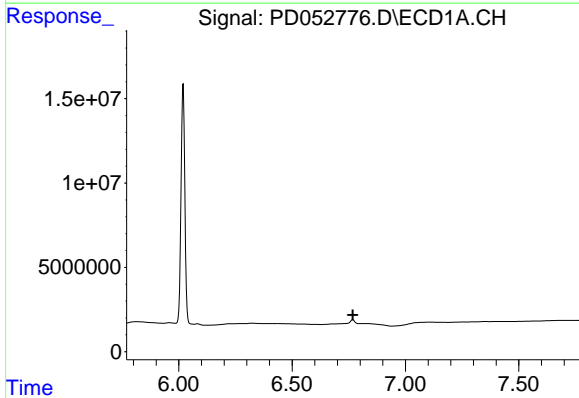
#18 Endrin aldehyde

R.T.: 0.000 min

Exp R.T. : 7.103 min

Response: 0

Conc: N.D.



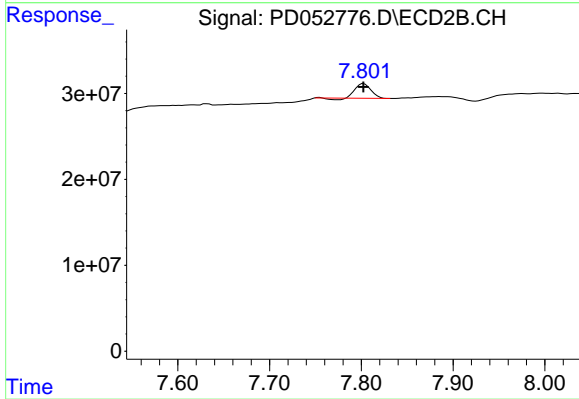
#21 Endrin ketone

R.T.: 0.000 min

Exp R.T. : 6.768 min

Response: 0

Conc: N.D.



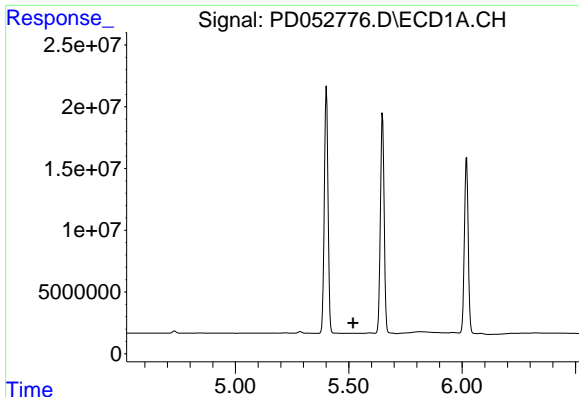
#21 Endrin ketone

R.T.: 7.803 min

Delta R.T.: 0.000 min

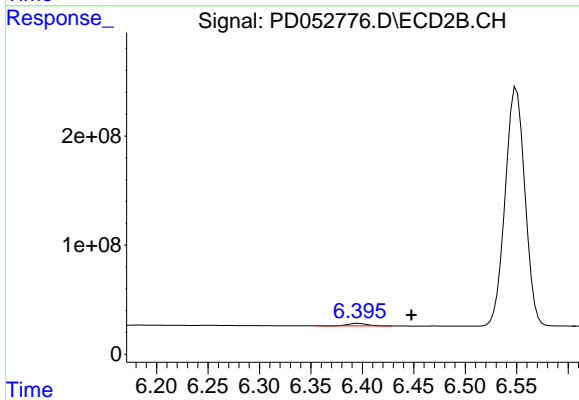
Response: 19229262

Conc: 0.98 ng/ml



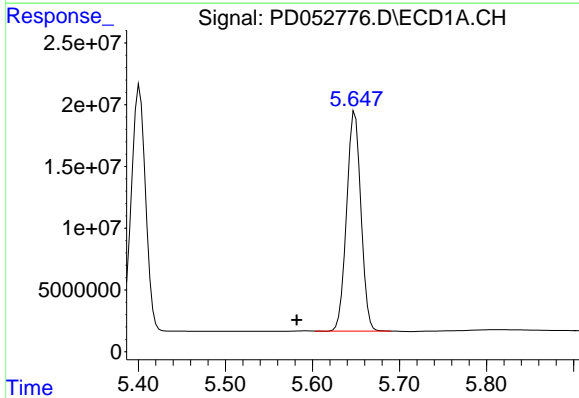
#22 Toxaphene-1

R.T.: 0.000 min
 Exp R.T. : 5.519 min
 Response: 0
 Conc: N.D.



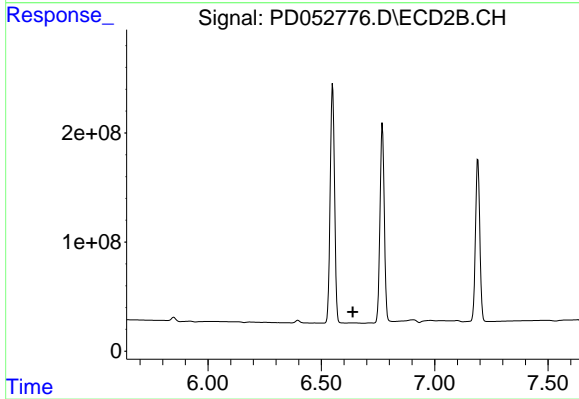
#22 Toxaphene-1

R.T.: 6.396 min
 Delta R.T.: -0.051 min
 Response: 30538364
 Conc: 208.40 ng/ml



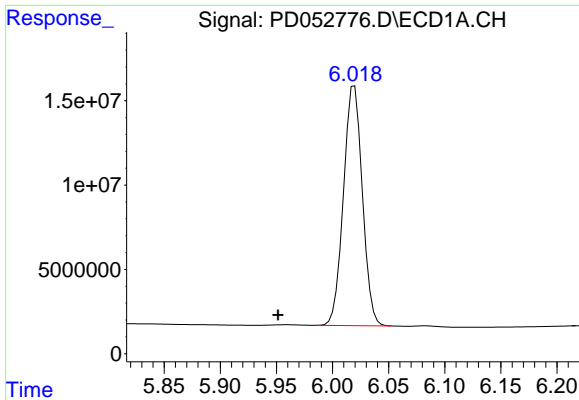
#23 Toxaphene-2

R.T.: 5.649 min
 Delta R.T.: 0.067 min
 Response: 202637794
 Conc: 9128.66 ng/ml



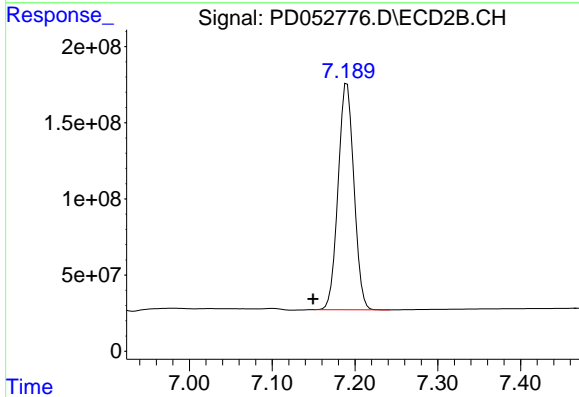
#23 Toxaphene-2

R.T.: 0.000 min
 Exp R.T. : 6.639 min
 Response: 0
 Conc: N.D.



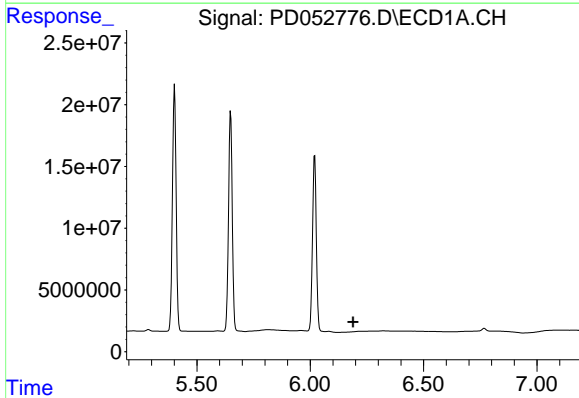
#24 Toxaphene-3

R.T.: 6.020 min
 Delta R.T.: 0.068 min
 Response: 166403080
 Conc: 4613.53 ng/ml



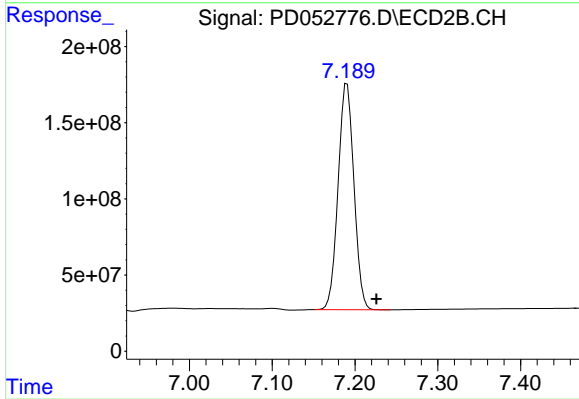
#24 Toxaphene-3

R.T.: 7.190 min
 Delta R.T.: 0.041 min
 Response: 1971371207
 Conc: 8860.17 ng/ml



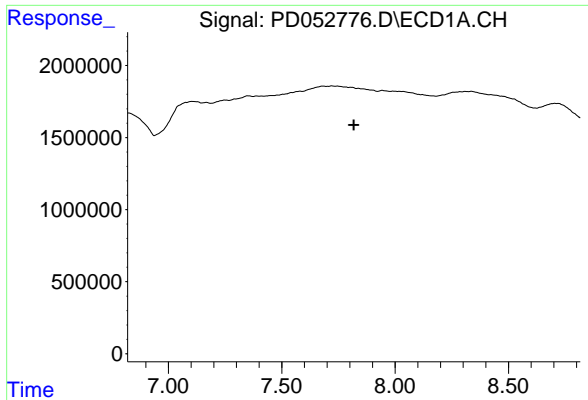
#25 Toxaphene-4

R.T.: 0.000 min
 Exp R.T. : 6.190 min
 Response: 0
 Conc: N.D.



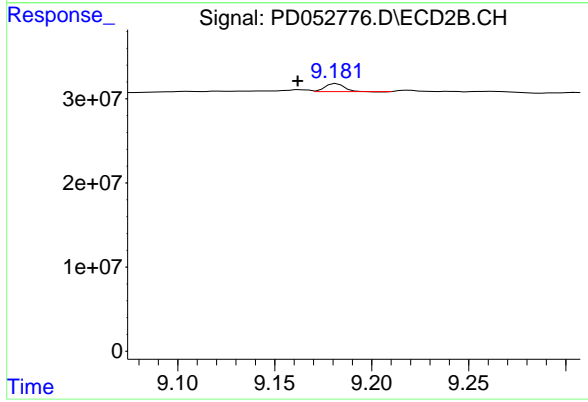
#25 Toxaphene-4

R.T.: 7.190 min
 Delta R.T.: -0.036 min
 Response: 1971371207
 Conc: 3326.57 ng/ml



#27 Decachlorobiphenyl

R.T.: 0.000 min
Exp R.T. : 7.818 min
Response: 0
Conc: N.D.



#27 Decachlorobiphenyl

R.T.: 9.182 min
Delta R.T.: 0.020 min
Response: 6496954
Conc: 0.45 ng/ml