

Data Path : Z:\pestpcbsrv\HPCHEM1\ECD\_D\Data\PD041124\  
 Data File : PD082366.D  
 Signal(s) : Signal #1: ECD1A.ch Signal #2: ECD2B.ch  
 Acq On : 10 Apr 2024 02:09  
 Operator : AR\AJ  
 Sample : INDA501  
 Misc :  
 ALS Vial : 17 Sample Multiplier: 1

**Instrument :**  
 ECD\_D  
**ClientSampleId :**  
 INDA5027

**Manual Integrations**  
**APPROVED**

Reviewed By :Abdul Mirza 04/10/2024  
 Supervised By :Ankita Jodhani 04/10/2024

Integration File signal 1: autoint1.e  
 Integration File signal 2: autoint2.e  
 Quant Time: Apr 10 06:08:12 2024  
 Quant Method : Z:\pestpcbsrv\HPCHEM1\ECD\_D\Method\PD041124CLP-TCLP.M  
 Quant Title : GC Extractables  
 QLast Update : Wed Apr 10 06:08:03 2024  
 Response via : Initial Calibration  
 Integrator: ChemStation

Volume Inj. : 1 µl  
 Signal #1 Phase : ZB-MR2 Signal #2 Phase: ZB-MR1  
 Signal #1 Info : 30M x 0.32mm x0.2 Signal #2 Info : 30M x 0.32mm x 0.50µm

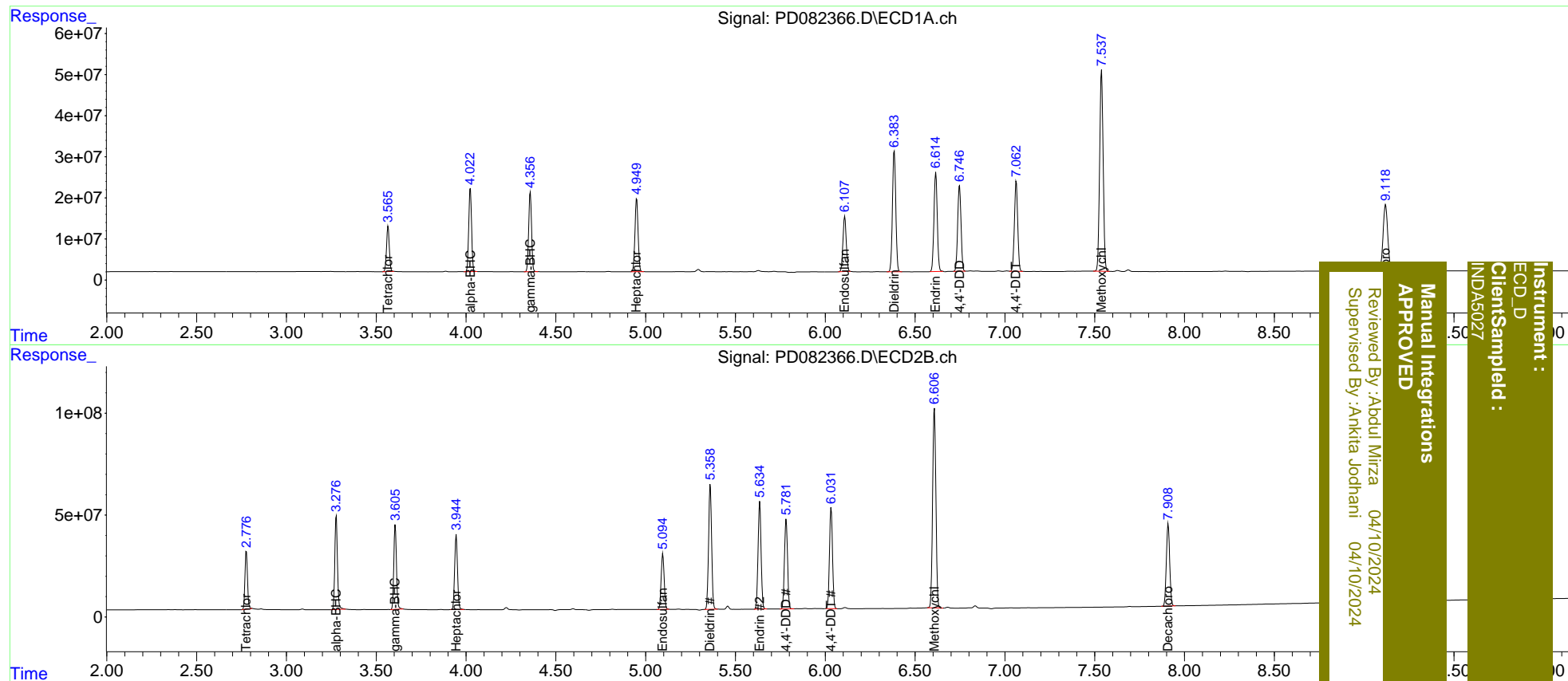
	Compound	RT#1	RT#2	Resp#1	Resp#2	ng/ml	ng/ml
-----							
System Monitoring Compounds							
1)	SA Tetrachlo...	3.566	2.777	118.4E6	279.5E6	77.388	80.086
27)	SA Decachlor...	9.119	7.909	293.2E6	520.1E6	148.699	156.458
Target Compounds							
2)	A alpha-BHC	4.024	3.277	221.7E6	468.9E6	86.239	86.446
3)	MA gamma-BHC...	4.358	3.606	214.5E6	424.3E6	86.421	85.444
4)	MA Heptachlor	4.950	3.946	215.0E6	401.5E6	81.156	83.208
9)	A Endosulfan I	6.109	5.096	171.6E6	316.0E6	80.884	82.446
13)	MA Dieldrin	6.384	5.360	379.2E6	723.7E6	168.686	166.460
14)	MA Endrin	6.615	5.634	309.6E6	617.4E6	168.448	164.985m
16)	A 4,4'-DDD	6.747	5.782	269.8E6	524.8E6	170.726	167.100
17)	MA 4,4'-DDT	7.063	6.033	279.7E6	581.4E6	171.113	172.417
20)	A Methoxychlor	7.538	6.608	669.2E6	1239.4E6	774.076	720.878
-----							

(f)=RT Delta > 1/2 Window (#)=Amounts differ by > 25% (m)=manual int.

Data Path : Z:\pestpcbsrv\HPCHEM1\ECD\_D\Data\PD041124\  
 Data File : PD082366.D  
 Signal(s) : Signal #1: ECD1A.ch Signal #2: ECD2B.ch  
 Acq On : 10 Apr 2024 02:09  
 Operator : AR\AJ  
 Sample : INDA501  
 Misc :  
 ALS Vial : 17 Sample Multiplier: 1

Integration File signal 1: autoint1.e  
 Integration File signal 2: autoint2.e  
 Quant Time: Apr 10 06:08:12 2024  
 Quant Method : Z:\pestpcbsrv\HPCHEM1\ECD\_D\Method\PD041124CLP-TCLP.M  
 Quant Title : GC Extractables  
 QLast Update : Wed Apr 10 06:08:03 2024  
 Response via : Initial Calibration  
 Integrator: ChemStation

Volume Inj. : 1 µl  
 Signal #1 Phase : ZB-MR2 Signal #2 Phase: ZB-MR1  
 Signal #1 Info : 30M x 0.32mm x0.2 Signal #2 Info : 30M x 0.32mm x 0.50µm



Instrument : ECD\_D  
 Client/Sample ID : INDA5027  
 Manual Integrations APPROVED  
 Reviewed By : Aboul Mirza 04/10/2024  
 Supervised By : Ankita Jodhani 04/10/2024