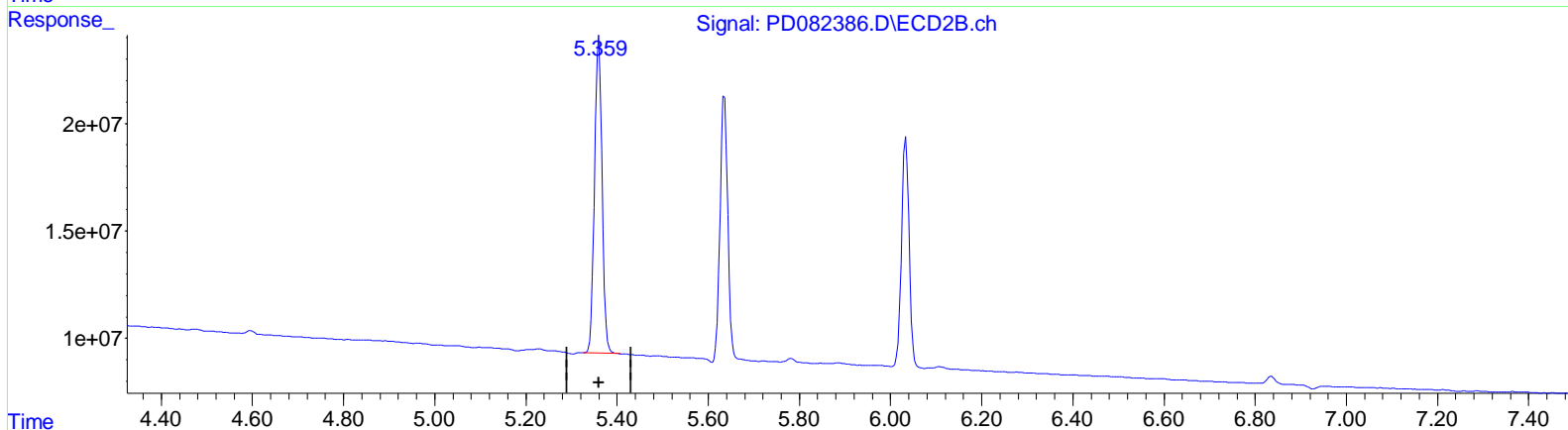
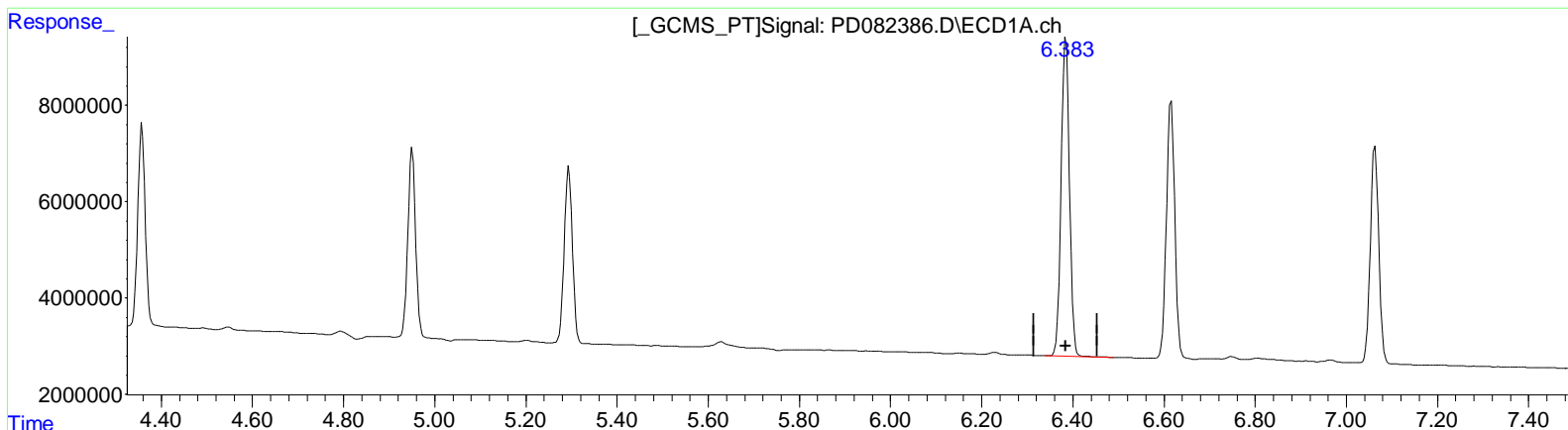


Data Path : Z:\pestpcbsrv\HPCHEM1\ECD_D\Data\PD041224\
 Data File : PD082386.D
 Signal(s) : Signal #1: ECD1A.ch Signal #2: ECD2B.ch
 Acq On : 10 Apr 2024 13:23
 Operator : ARVAJ
 Sample : P2004-07
 Misc :
 ALS Vial : 5 Sample Multiplier: 1

Integration File signal 1: autoint1.e
 Integration File signal 2: autoint2.e
 Quant Time: Apr 10 20:53:25 2024
 Quant Method : Z:\pestpcbsrv\HPCHEM1\ECD_D\Method\PD041024CLP.M
 Quant Title : GC Extractables
 QLast Update : Wed Apr 10 02:08:54 2024
 Response via : Initial Calibration
 Integrator: ChemStation

Volume Inj. : 1 µl
 Signal #1 Phase : ZB-MR1 Signal #2 Phase: ZB-MR2
 Signal #1 Info : 30M x 0.32mm x 0.5 Signal #2 Info : 30M x 0.32mm x 0.25µm



QEdit

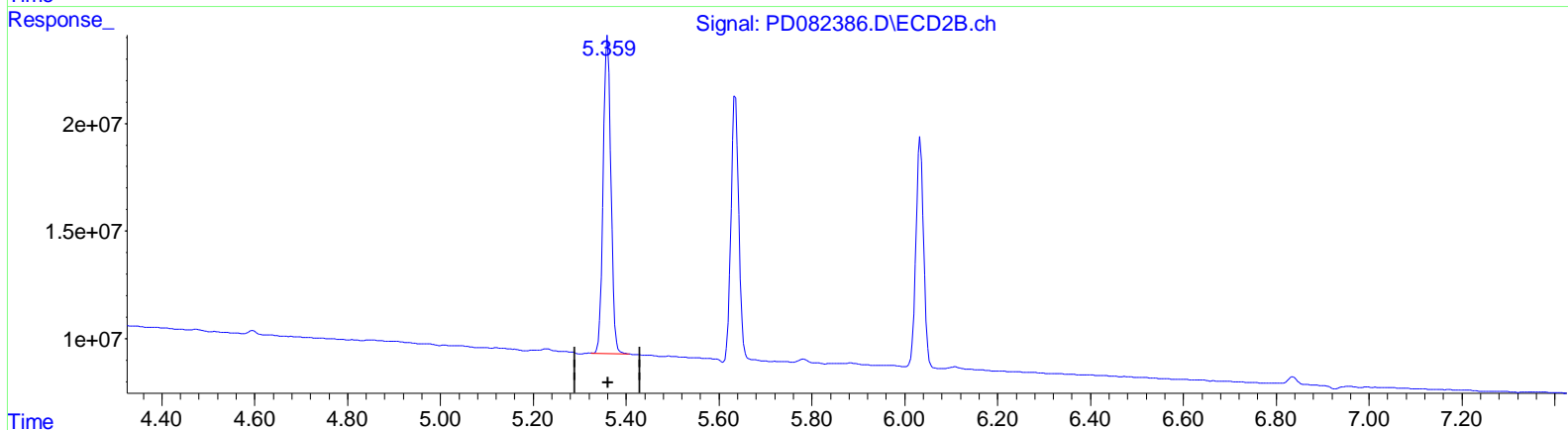
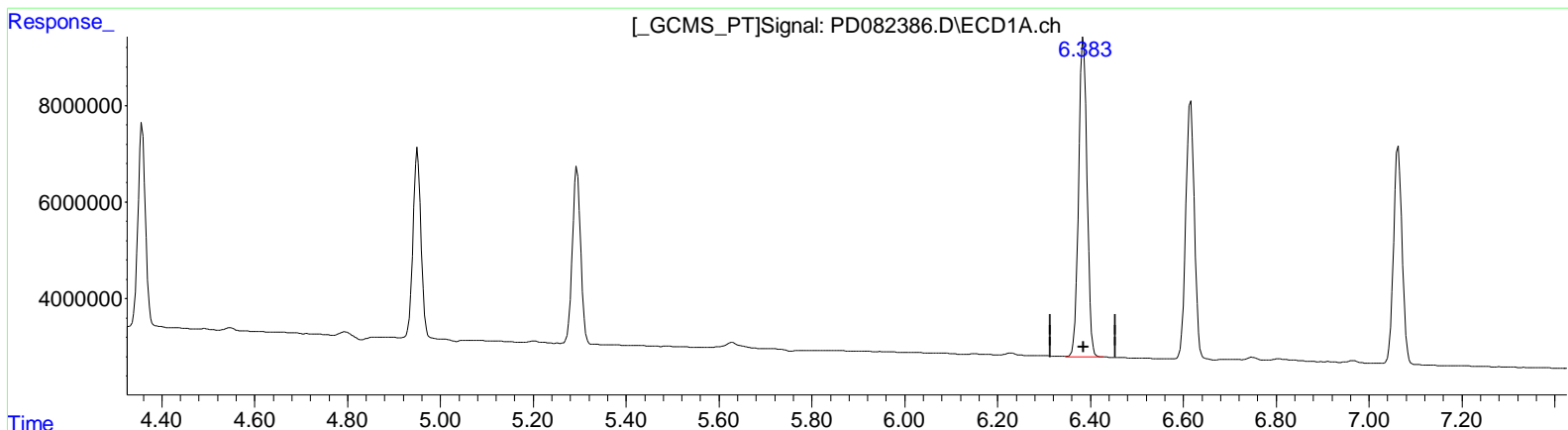
(13) Dieldrin (MA)
 6.385min 38.053 ng/ml
 response 83837846

(13) Dieldrin #2 (MA)
 5.360min 40.576 ng/ml
 response 170963036

Data Path : Z:\pestpcbsrv\HPCHEM1\ECD_D\Data\PD041224\
 Data File : PD082386.D
 Signal(s) : Signal #1: ECD1A.ch Signal #2: ECD2B.ch
 Acq On : 10 Apr 2024 13:23
 Operator : ARVAJ
 Sample : P2004-07
 Misc :
 ALS Vial : 5 Sample Multiplier: 1

Integration File signal 1: autoint1.e
 Integration File signal 2: autoint2.e
 Quant Time: Apr 10 20:53:25 2024
 Quant Method : Z:\pestpcbsrv\HPCHEM1\ECD_D\Method\PD041024CLP.M
 Quant Title : GC Extractables
 QLast Update : Wed Apr 10 02:08:54 2024
 Response via : Initial Calibration
 Integrator: ChemStation

Volume Inj. : 1 µl
 Signal #1 Phase : ZB-MR1 Signal #2 Phase: ZB-MR2
 Signal #1 Info : 30M x 0.32mm x 0.5 Signal #2 Info : 30M x 0.32mm x 0.25µm



(13) Dieldrin (MA)
 6.383min 38.020 ng/ml m
 response 83764813

(13) Dieldrin #2 (MA)
 5.360min 40.576 ng/ml
 response 170963036

Data Path : Z:\pestpcbsrv\HPCHEM1\ECD_D\Data\PD041224\
 Data File : PD082386.D
 Signal(s) : Signal #1: ECD1A.ch Signal #2: ECD2B.ch
 Acq On : 10 Apr 2024 13:23
 Operator : AR\AJ
 Sample : P2004-07
 Misc :
 ALS Vial : 5 Sample Multiplier: 1

Integration File signal 1: autoint1.e
 Integration File signal 2: autoint2.e
 Quant Time: Apr 10 20:53:25 2024
 Quant Method : Z:\pestpcbsrv\HPCHEM1\ECD_D\Method\PD041024CLP.M
 Quant Title : GC Extractables
 QLast Update : Wed Apr 10 02:08:54 2024
 Response via : Initial Calibration
 Integrator: ChemStation

Volume Inj. : 1 µl
 Signal #1 Phase : ZB-MR1 Signal #2 Phase: ZB-MR2
 Signal #1 Info : 30M x 0.32mm x 0.5 Signal #2 Info : 30M x 0.32mm x 0.25µm

Compound	RT#1	RT#2	Resp#1	Resp#2	ng/ml	ng/ml

System Monitoring Compounds						
Target Compounds						
3) MA gamma-BHC...	4.358	3.607	47698858	98899515	19.185	19.724
4) MA Heptachlor	4.950	3.946	47177107	93179253	18.679	19.911
5) MB Aldrin	5.294	4.225	45653861	94799024	19.620	20.620
13) MA Dieldrin	6.383	5.360	83764813	171.0E6	38.020m	40.576
14) MA Endrin	6.616	5.635	69135161	142.8E6	37.710	39.371
17) MA 4,4'-DDT	7.063	6.034	58068652	123.8E6	35.502	37.707

(f)=RT Delta > 1/2 Window (#)=Amounts differ by > 25% (m)=manual int.

Data Path : Z:\pestpcbsrv\HPCHEM1\ECD_D\Data\PD041224\
 Data File : PD082386.D
 Signal(s) : Signal #1: ECD1A.ch Signal #2: ECD2B.ch
 Acq On : 10 Apr 2024 13:23
 Operator : ARVAJ
 Sample : P2004-07
 Misc :
 ALS Vial : 5 Sample Multiplier: 1

Integration File signal 1: autoint1.e
 Integration File signal 2: autoint2.e
 Quant Time: Apr 10 20:53:25 2024
 Quant Method : Z:\pestpcbsrv\HPCHEM1\ECD_D\Method\PD041024CLP.M
 Quant Title : GC Extractables
 QLast Update : Wed Apr 10 02:08:54 2024
 Response via : Initial Calibration
 Integrator: ChemStation

Volume Inj. : 1 µl
 Signal #1 Phase : ZB-MR1 Signal #2 Phase: ZB-MR2
 Signal #1 Info : 30M x 0.32mm x0.5 Signal #2 Info : 30M x 0.32mm x 0.25µm

