

Data Path : Z:\pestpcbsrv\HPCHEM1\ECD\_D\Data\PD041423\  
 Data File : PD074730.D  
 Signal(s) : Signal #1: ECD1A.ch Signal #2: ECD2B.ch  
 Acq On : 13 Apr 2023 18:36  
 Operator : AR\AJ  
 Sample : PIBLK070  
 Misc :  
 ALS Vial : 2 Sample Multiplier: 1

Instrument :  
 ECD\_D  
 ClientSampleId :

Integration File signal 1: autoint1.e  
 Integration File signal 2: autoint2.e  
 Quant Time: Apr 14 01:24:53 2023  
 Quant Method : Z:\pestpcbsrv\HPCHEM1\ECD\_D\Method\PD041423CLP.M  
 Quant Title : GC Extractables  
 QLast Update : Thu Apr 13 14:14:37 2023  
 Response via : Initial Calibration  
 Integrator: ChemStation

Volume Inj. : 1 µl  
 Signal #1 Phase : ZB-MR2 Signal #2 Phase: ZB-MR2  
 Signal #1 Info : 30M x 0.32mm x0.5 Signal #2 Info : 30M x 0.32mm x 0.25µm

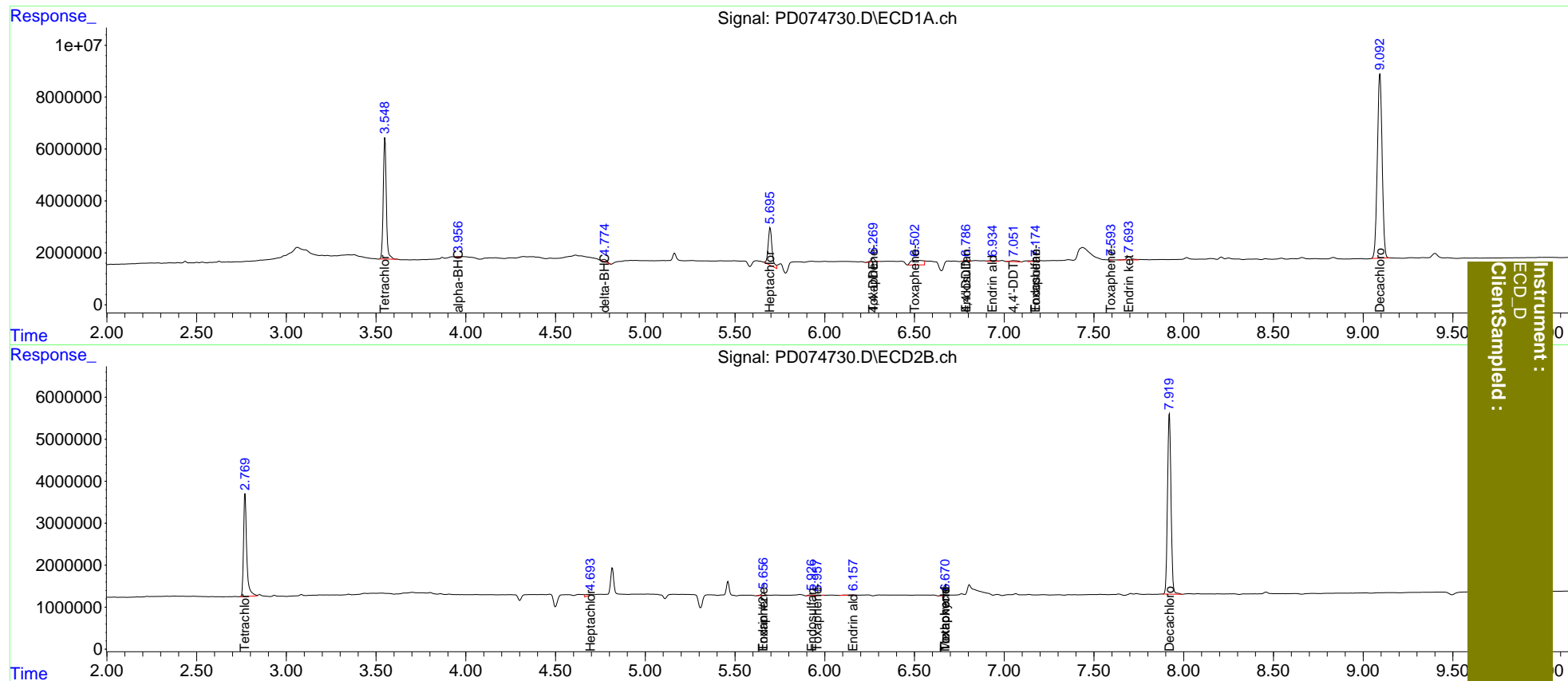
	Compound	RT#1	RT#2	Resp#1	Resp#2	ng/ml	ng/ml
-----							
System Monitoring Compounds							
1)	SA Tetrachlo...	3.550	2.770	55161619	30051788	21.606	21.362
27)	SA Decachlor...	9.094	7.921	132.1E6	58549851	43.080	43.381
Target Compounds							
2)	A alpha-BHC	3.958f	3.231f	432517	97505	0.104	<MDL #
7)	B delta-BHC	4.774	0.000	1537128	0	0.417	N.D. #
8)	B Heptachlo...	5.696	4.694	21608441	810235	5.906	0.466 #
12)	B 4,4'-DDE	6.270f	0.000	2058501	0	0.596	N.D. #
14)	MA Endrin	0.000	5.657	0	740541	N.D.	0.472
15)	B Endosulfa...	6.788	5.927	668888	398832	0.209	0.264 #
16)	A 4,4'-DDD	6.788f	0.000	668888	0	0.235	N.D. #
17)	MA 4,4'-DDT	7.052	0.000	1127419	0	0.370	N.D. #
18)	B Endrin al...	6.935	6.159f	836982	214928	0.320	0.175 #
19)	B Endosulfa...	7.177	0.000	890876	0	0.291	N.D. #
20)	A Methoxychlor	0.000	6.672f	0	309661	N.D.	0.421
21)	B Endrin ke...	7.694	6.806f	2594993	-440209	0.729	N.D. #
22)	Toxaphene-1	6.270	0.000	2058501	0	74.134	N.D. #
23)	Toxaphene-2	6.504f	5.657	8360301	740541	241.853	67.947 #
24)	Toxaphene-3	0.000	5.958	0	155950	N.D.	12.489
25)	Toxaphene-4	7.177	6.672f	890876	309661	11.677	8.195 #
26)	Toxaphene-5	7.594	6.672f	22410	309661	0.385	6.190 #

(f)=RT Delta > 1/2 Window (#)=Amounts differ by > 25% (m)=manual int.

Data Path : Z:\pestpcbsrv\HPCHEM1\ECD\_D\Data\PD041423\  
 Data File : PD074730.D  
 Signal(s) : Signal #1: ECD1A.ch Signal #2: ECD2B.ch  
 Acq On : 13 Apr 2023 18:36  
 Operator : AR\AJ  
 Sample : PIBLK070  
 Misc :  
 ALS Vial : 2 Sample Multiplier: 1

Integration File signal 1: autoint1.e  
 Integration File signal 2: autoint2.e  
 Quant Time: Apr 14 01:24:53 2023  
 Quant Method : Z:\pestpcbsrv\HPCHEM1\ECD\_D\Method\PD041423CLP.M  
 Quant Title : GC Extractables  
 QLast Update : Thu Apr 13 14:14:37 2023  
 Response via : Initial Calibration  
 Integrator: ChemStation

Volume Inj. : 1 µl  
 Signal #1 Phase : ZB-MR1 Signal #2 Phase: ZB-MR2  
 Signal #1 Info : 30M x 0.32mm x0.5 Signal #2 Info : 30M x 0.32mm x 0.25µm



Instrument :  
 ECD\_D  
 Client/Sample :