

Data Path : Z:\pestpcbsrv\HPCHEM1\ECD_D\Data\PD041523\
 Data File : PD074737.D
 Signal(s) : Signal #1: ECD1A.ch Signal #2: ECD2B.ch
 Acq On : 14 Apr 2023 10:02
 Operator : AR\AJ
 Sample : TOXAPH101
 Misc :
 ALS Vial : 4 Sample Multiplier: 1

Instrument :
 ECD_D
ClientSampleId :
 TOXAPH1049

Manual Integrations
APPROVED
 Reviewed By :Abdul Mirza 04/24/2023
 Supervised By :Ankita Jodhani 04/24/2023

Integration File signal 1: autoint1.e
 Integration File signal 2: autoint2.e
 Quant Time: Apr 17 01:57:57 2023
 Quant Method : Z:\pestpcbsrv\HPCHEM1\ECD_D\Method\PD041523CLP-TCLP.M
 Quant Title : GC Extractables
 QLast Update : Mon Apr 17 01:57:49 2023
 Response via : Initial Calibration
 Integrator: ChemStation

Volume Inj. : 1 µl
 Signal #1 Phase : ZB-MR2 Signal #2 Phase: ZB-MR1
 Signal #1 Info : 30M x 0.32mm x0.2 Signal #2 Info : 30M x 0.32mm x 0.50µm

Compound	RT#1	RT#2	Resp#1	Resp#2	ng/ml	ng/ml

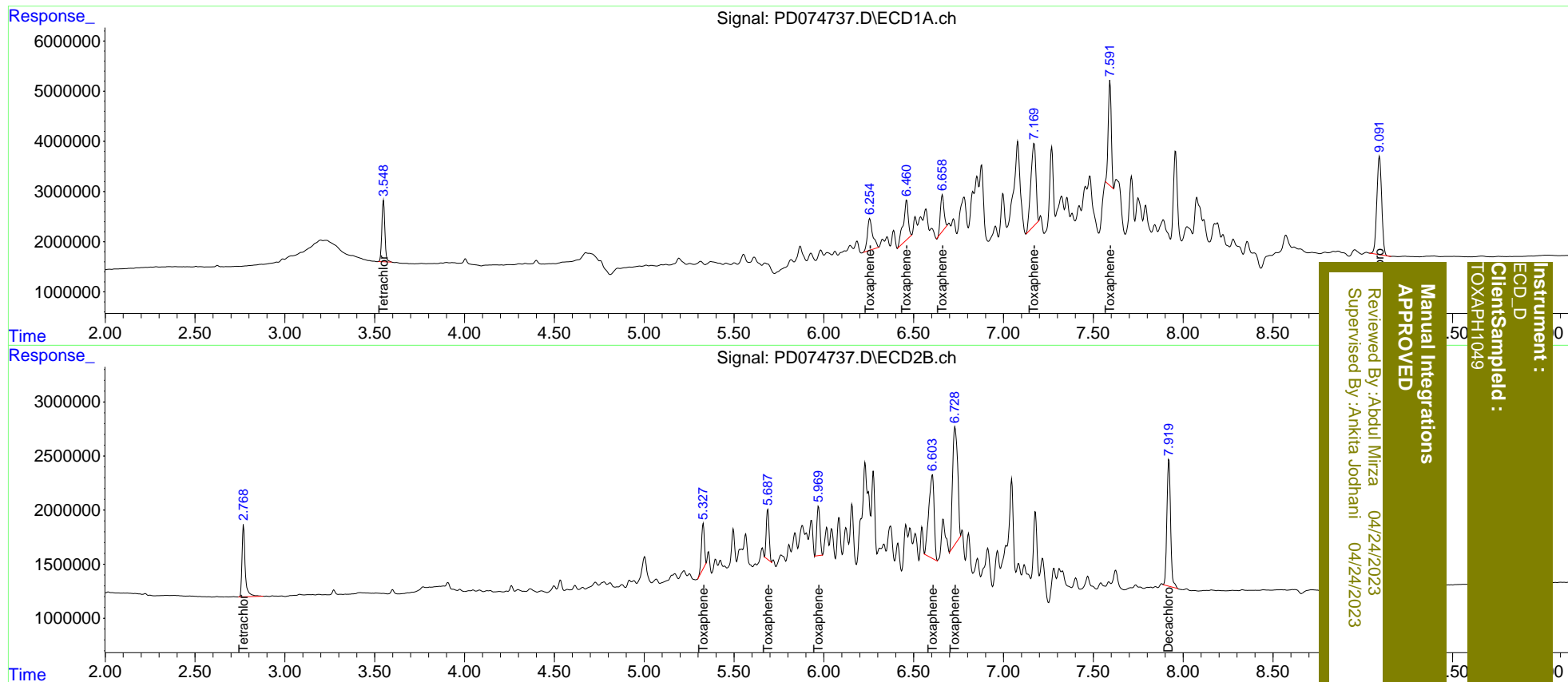
System Monitoring Compounds						
1) SA Tetrachlo...	3.549	2.770	14277167	8146108	5.131	5.194
27) SA Decachlor...	9.093	7.919	36860149	16657688	10.646	10.595m
Target Compounds						
22) Toxaphene-1	6.256	5.327	12765331	4839953	514.927	527.393m
23) Toxaphene-2	6.461	5.687	15401491	5080624	506.189	516.156m
24) Toxaphene-3	6.660	5.969	9968428	5628367	466.076	508.662m
25) Toxaphene-4	7.170	6.603	32586526	15868632	491.544	489.183m
26) Toxaphene-5	7.591	6.728	24640667	21214361	490.104m	483.565m

(f)=RT Delta > 1/2 Window (#)=Amounts differ by > 25% (m)=manual int.

Data Path : Z:\pestpcbsrv\HPCHEM1\ECD_D\Data\PD041523\
 Data File : PD074737.D
 Signal(s) : Signal #1: ECD1A.ch Signal #2: ECD2B.ch
 Acq On : 14 Apr 2023 10:02
 Operator : AR\AJ
 Sample : TOXAPH101
 Misc :
 ALS Vial : 4 Sample Multiplier: 1

Integration File signal 1: autoint1.e
 Integration File signal 2: autoint2.e
 Quant Time: Apr 17 01:57:57 2023
 Quant Method : Z:\pestpcbsrv\HPCHEM1\ECD_D\Method\PD041523CLP-TCLP.M
 Quant Title : GC Extractables
 QLast Update : Mon Apr 17 01:57:49 2023
 Response via : Initial Calibration
 Integrator: ChemStation

Volume Inj. : 1 µl
 Signal #1 Phase : ZB-MR2 Signal #2 Phase: ZB-MR1
 Signal #1 Info : 30M x 0.32mm x0.2 Signal #2 Info : 30M x 0.32mm x 0.50µm



Instrument : ECD_D
 Client/Sample : TOXAPH1049
 Manual Integrations APPROVED
 Reviewed By : Aboul Mirza 04/24/2023
 Supervised By : Ankita Jodhani 04/24/2023