

Data Path : Z:\pestpcbsrv\HPCHEM1\ECD_D\Data\PD041523\
 Data File : PD074740.D
 Signal(s) : Signal #1: ECD1A.ch Signal #2: ECD2B.ch
 Acq On : 14 Apr 2023 10:43
 Operator : AR\AJ
 Sample : TOXAPH401
 Misc :
 ALS Vial : 7 Sample Multiplier: 1

Instrument :
 ECD_D
ClientSampleId :
 TOXAPH4052

Manual Integrations
APPROVED
 Reviewed By :Abdul Mirza 04/24/2023
 Supervised By :Ankita Jodhani 04/24/2023

Integration File signal 1: autoint1.e
 Integration File signal 2: autoint2.e
 Quant Time: Apr 17 03:10:04 2023
 Quant Method : Z:\pestpcbsrv\HPCHEM1\ECD_D\Method\PD041523CLP-TCLP.M
 Quant Title : GC Extractables
 QLast Update : Mon Apr 17 03:09:57 2023
 Response via : Initial Calibration
 Integrator: ChemStation

Volume Inj. : 1 µl
 Signal #1 Phase : ZB-MR2 Signal #2 Phase: ZB-MR1
 Signal #1 Info : 30M x 0.32mm x0.2 Signal #2 Info : 30M x 0.32mm x 0.50µm

Compound	RT#1	RT#2	Resp#1	Resp#2	ng/ml	ng/ml

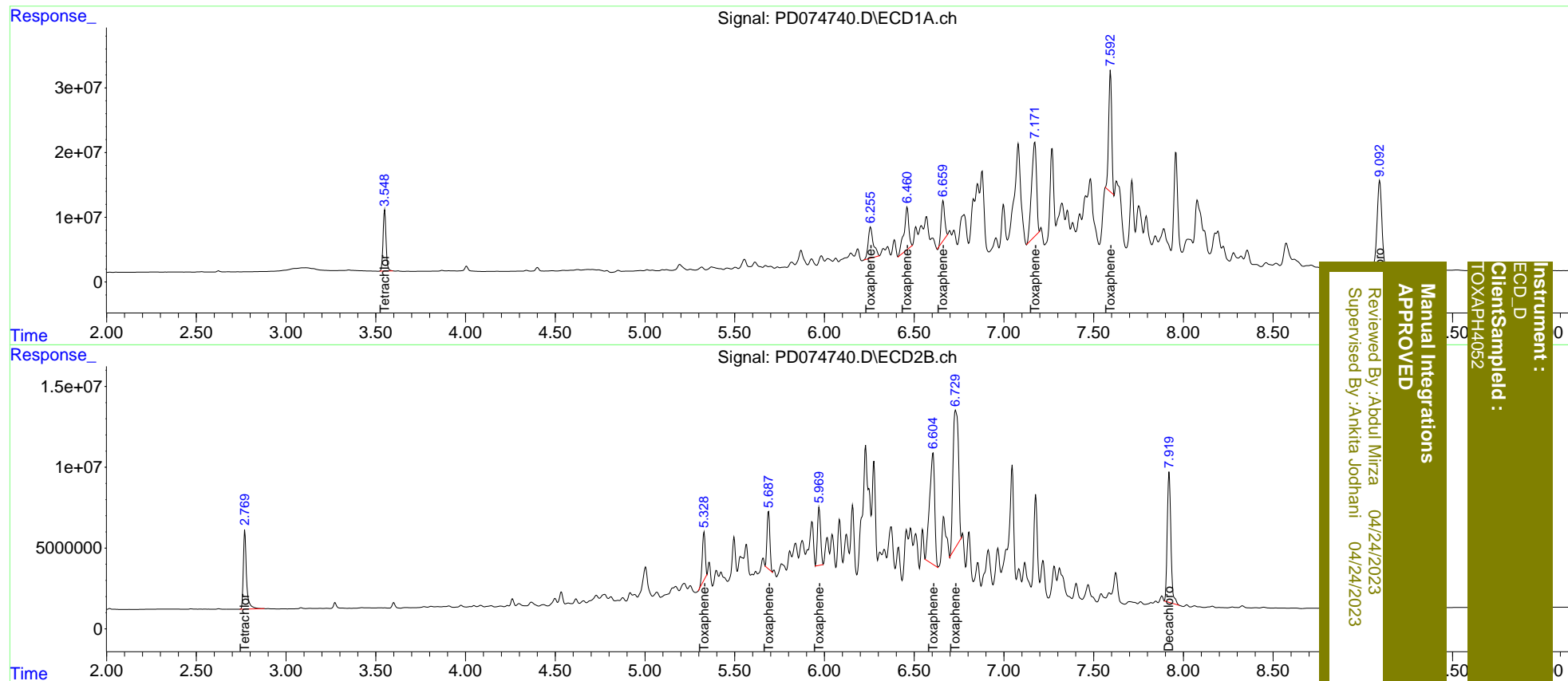
System Monitoring Compounds						
1) SA Tetrachlo...	3.550	2.771	107.9E6	59556238	39.155	38.517
27) SA Decachlor...	9.094	7.919	247.1E6	114.0E6	73.816	74.862m
Target Compounds						
22) Toxaphene-1	6.257	5.328	95228358	33931638	3940.695	3768.897m
23) Toxaphene-2	6.461	5.687	122.9E6	39250341	4057.695	4022.049m
24) Toxaphene-3	6.661	5.969	82018166	43454862	4052.851	3972.864m
25) Toxaphene-4	7.172	6.604	279.9E6	136.4E6	4192.596	4171.778m
26) Toxaphene-5	7.594	6.729	218.1E6	179.4E6	4308.248	4108.360m

(f)=RT Delta > 1/2 Window (#)=Amounts differ by > 25% (m)=manual int.

Data Path : Z:\pestpcbsrv\HPCHEM1\ECD_D\Data\PD041523\
 Data File : PD074740.D
 Signal(s) : Signal #1: ECD1A.ch Signal #2: ECD2B.ch
 Acq On : 14 Apr 2023 10:43
 Operator : AR\AJ
 Sample : TOXAPH401
 Misc :
 ALS Vial : 7 Sample Multiplier: 1

Integration File signal 1: autoint1.e
 Integration File signal 2: autoint2.e
 Quant Time: Apr 17 03:10:04 2023
 Quant Method : Z:\pestpcbsrv\HPCHEM1\ECD_D\Method\PD041523CLP-TCLP.M
 Quant Title : GC Extractables
 QLast Update : Mon Apr 17 03:09:57 2023
 Response via : Initial Calibration
 Integrator: ChemStation

Volume Inj. : 1 µl
 Signal #1 Phase : ZB-MR2 Signal #2 Phase: ZB-MR1
 Signal #1 Info : 30M x 0.32mm x0.2 Signal #2 Info : 30M x 0.32mm x 0.50µm



Instrument : ECD_D
 Client/Sample : TOXAPH4052
 Manual Integrations APPROVED
 Reviewed By : Abdul Mirza 04/24/2023
 Supervised By : Ankita Jodhani 04/24/2023