

Data Path : Z:\pestpcbsrv\HPCHEM1\ECD_D\Data\PD041523\
 Data File : PD074756.D
 Signal(s) : Signal #1: ECD1A.ch Signal #2: ECD2B.ch
 Acq On : 14 Apr 2023 14:21
 Operator : AR\AJ
 Sample : PEM050
 Misc :
 ALS Vial : 3 Sample Multiplier: 1

Instrument :
 ECD_D
ClientSampleId :
 PEM061

Manual Integrations
APPROVED

Reviewed By :Abdul Mirza 04/17/2023
 Supervised By :Ankita Jodhani 04/17/2023

Integration File signal 1: autoint1.e
 Integration File signal 2: autoint2.e
 Quant Time: Apr 17 04:20:21 2023
 Quant Method : Z:\pestpcbsrv\HPCHEM1\ECD_D\Method\PD041523CLP-TCLP.M
 Quant Title : GC Extractables
 QLast Update : Mon Apr 17 04:00:38 2023
 Response via : Initial Calibration
 Integrator: ChemStation

Volume Inj. : 1 µl
 Signal #1 Phase : ZB-MR2 Signal #2 Phase: ZB-MR1
 Signal #1 Info : 30M x 0.32mm x0.2 Signal #2 Info : 30M x 0.32mm x 0.50µm

Compound	RT#1	RT#2	Resp#1	Resp#2	ng/ml	ng/ml

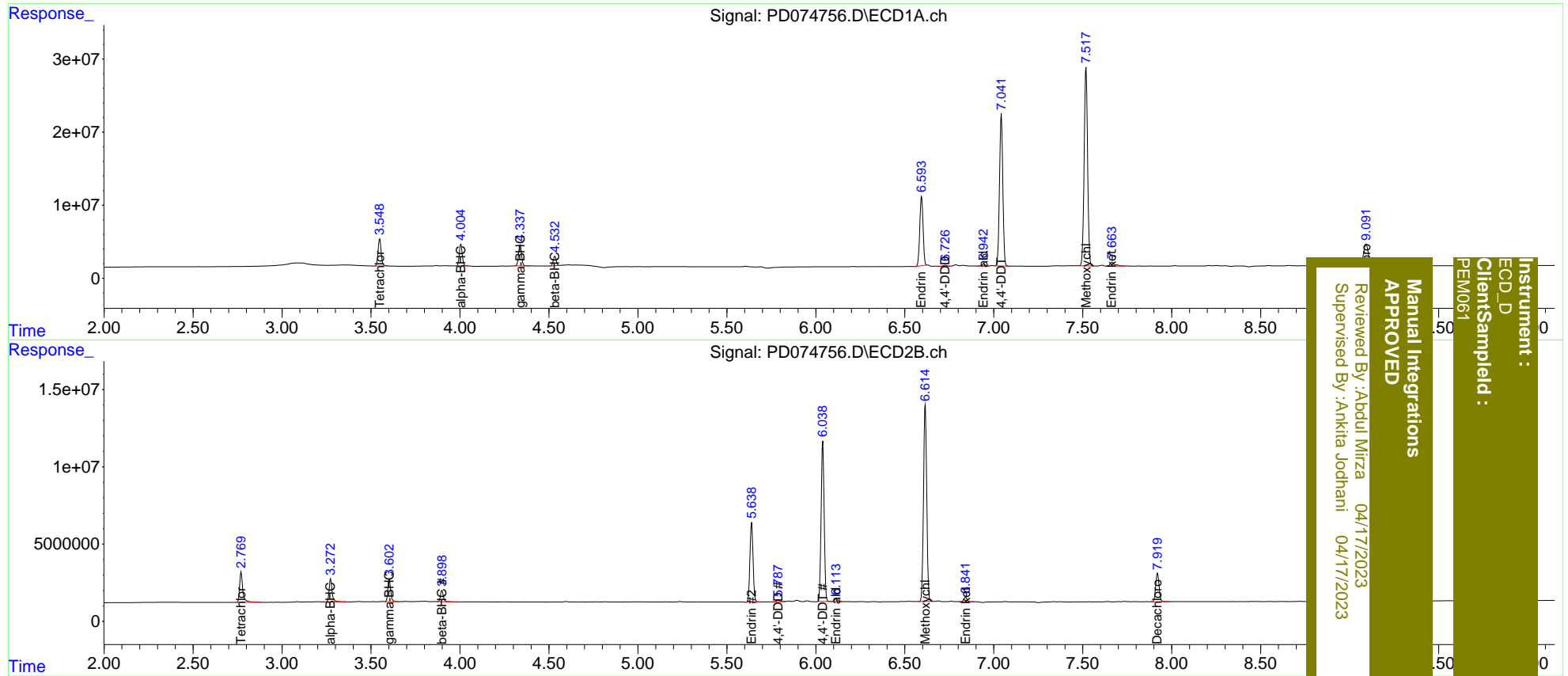
System Monitoring Compounds						
1) SA Tetrachlo...	3.549	2.771	43636859	24169381	18.566	18.603
27) SA Decachlor...	9.093	7.921	56327224	24325695	20.881	20.434
Target Compounds						
2) A alpha-BHC	4.004	3.273	34392829	17107799	8.843m	9.251
3) MA gamma-BHC...	4.339	3.604	33879283	15723090	9.280	9.101
6) B beta-BHC	4.534	3.899	15093936	8082893	9.596	9.852
14) MA Endrin	6.595	5.640	122.0E6	62141788	43.420	45.168
16) A 4,4'-DDD	6.728	5.789	1661672	1250977	0.660	1.034 #
17) MA 4,4'-DDT	7.043	6.039	267.4E6	123.9E6	97.927	97.655
18) B Endrin al...	6.943	6.114	3616071	2105035	1.562	1.953 #
20) A Methoxychlor	7.519	6.615	363.8E6	160.4E6	242.646	250.463
21) B Endrin ke...	7.665	6.842	9346606	3598871	2.951	2.412

(f)=RT Delta > 1/2 Window (#)=Amounts differ by > 25% (m)=manual int.

Data Path : Z:\pestpcbsrv\HPCHEM1\ECD_D\Data\PD041523\
 Data File : PD074756.D
 Signal(s) : Signal #1: ECD1A.ch Signal #2: ECD2B.ch
 Acq On : 14 Apr 2023 14:21
 Operator : AR\AJ
 Sample : PEM050
 Misc :
 ALS Vial : 3 Sample Multiplier: 1

Integration File signal 1: autoint1.e
 Integration File signal 2: autoint2.e
 Quant Time: Apr 17 04:20:21 2023
 Quant Method : Z:\pestpcbsrv\HPCHEM1\ECD_D\Method\PD041523CLP-TCLP.M
 Quant Title : GC Extractables
 QLast Update : Mon Apr 17 04:00:38 2023
 Response via : Initial Calibration
 Integrator: ChemStation

Volume Inj. : 1 µl
 Signal #1 Phase : ZB-MR2 Signal #2 Phase: ZB-MR1
 Signal #1 Info : 30M x 0.32mm x0.2 Signal #2 Info : 30M x 0.32mm x 0.50µm



Instrument : ECD_D
 Client/SampleID : PEM061

Manual Integrations
 APPROVED

Reviewed By : Aboul Mirza 04/17/2023
 Supervised By : Ankita Jodhani 04/17/2023