

Data Path : Z:\pestpcbsrv\HPCHEM1\ECD\_D\Data\PD041523\  
 Data File : PD074757.D  
 Signal(s) : Signal #1: ECD1A.ch Signal #2: ECD2B.ch  
 Acq On : 14 Apr 2023 14:54  
 Operator : AR\AJ  
 Sample : PB152088BL  
 Misc :  
 ALS Vial : 23 Sample Multiplier: 1

Instrument :  
 ECD\_D  
 ClientSampleId :  
 PBLK088

Integration File signal 1: autoint1.e  
 Integration File signal 2: autoint2.e  
 Quant Time: Apr 17 04:20:45 2023  
 Quant Method : Z:\pestpcbsrv\HPCHEM1\ECD\_D\Method\PD041523CLP-TCLP.M  
 Quant Title : GC Extractables  
 QLast Update : Mon Apr 17 04:00:38 2023  
 Response via : Initial Calibration  
 Integrator: ChemStation

Volume Inj. : 1 µl  
 Signal #1 Phase : ZB-MR2 Signal #2 Phase: ZB-MR1  
 Signal #1 Info : 30M x 0.32mm x0.2 Signal #2 Info : 30M x 0.32mm x 0.50µm

Compound	RT#1	RT#2	Resp#1	Resp#2	ng/ml	ng/ml
-----						
System Monitoring Compounds						
1) SA Tetrachlo...	3.554	2.769	46860142	25481164	19.937	19.613
27) SA Decachlor...	9.099	7.923	117.2E6	49415768	43.440	41.510

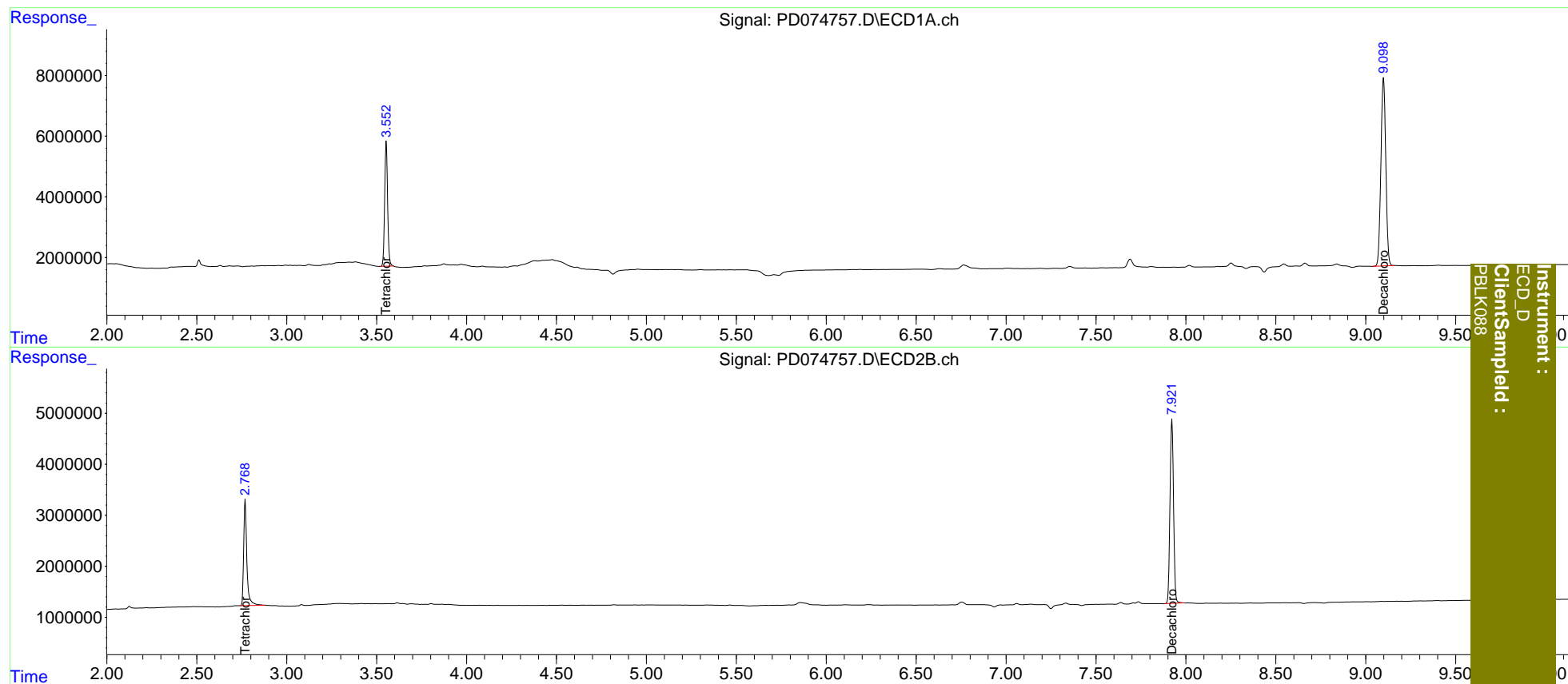
Target Compounds

-----  
 (f)=RT Delta > 1/2 Window (#)=Amounts differ by > 25% (m)=manual int.

Data Path : Z:\pestpcbsrv\HPCHEM1\ECD\_D\Data\PD041523\  
Data File : PD074757.D  
Signal(s) : Signal #1: ECD1A.ch Signal #2: ECD2B.ch  
Acq On : 14 Apr 2023 14:54  
Operator : AR\AJ  
Sample : PB152088BL  
Misc :  
ALS Vial : 23 Sample Multiplier: 1

Integration File signal 1: autoint1.e  
Integration File signal 2: autoint2.e  
Quant Time: Apr 17 04:20:45 2023  
Quant Method : Z:\pestpcbsrv\HPCHEM1\ECD\_D\Method\PD041523CLP-TCLP.M  
Quant Title : GC Extractables  
QLast Update : Mon Apr 17 04:00:38 2023  
Response via : Initial Calibration  
Integrator: ChemStation

Volume Inj. : 1 µl  
Signal #1 Phase : ZB-MR2 Signal #2 Phase: ZB-MR1  
Signal #1 Info : 30M x 0.32mm x0.2 Signal #2 Info : 30M x 0.32mm x 0.50µm



Instrument :  
ECD\_D  
ClientSampled :  
PBLK088