

Data Path : Z:\pestpcbsrv\HPCHEM1\ECD\_D\Data\PD041822\  
 Data File : PD069165.D  
 Signal(s) : Signal #1: ECD1A.ch Signal #2: ECD2B.ch  
 Acq On : 18 Apr 2022 08:52  
 Operator : AR\AJ  
 Sample : I.BLK  
 Misc :  
 ALS Vial : 2 Sample Multiplier: 1

Instrument :  
 ECD\_D  
 ClientSampleId :  
 I.BLK

Integration File signal 1: autoint1.e  
 Integration File signal 2: autoint2.e  
 Quant Time: Apr 18 13:42:41 2022  
 Quant Method : Z:\pestpcbsrv\HPCHEM1\ECD\_D\Method\PD041622.M  
 Quant Title : GC Extractables  
 QLast Update : Mon Apr 18 13:40:55 2022  
 Response via : Initial Calibration  
 Integrator: ChemStation

Volume Inj. : 2 µl  
 Signal #1 Phase : ZB-MR2 Signal #2 Phase: ZB-MR1  
 Signal #1 Info : 30M x 0.32mm x0.2 Signal #2 Info : 30M x 0.32mm x 0.50µm

Compound	RT#1	RT#2	Resp#1	Resp#2	ng/ml	ng/ml
-----						
System Monitoring Compounds						
1) SA Tetrachlo...	3.449	4.170	24549342	250.5E6	22.115	23.359
28) SA Decachlor...	8.205	9.364	26349928	148.0E6	21.103	22.609

Target Compounds  
 -----

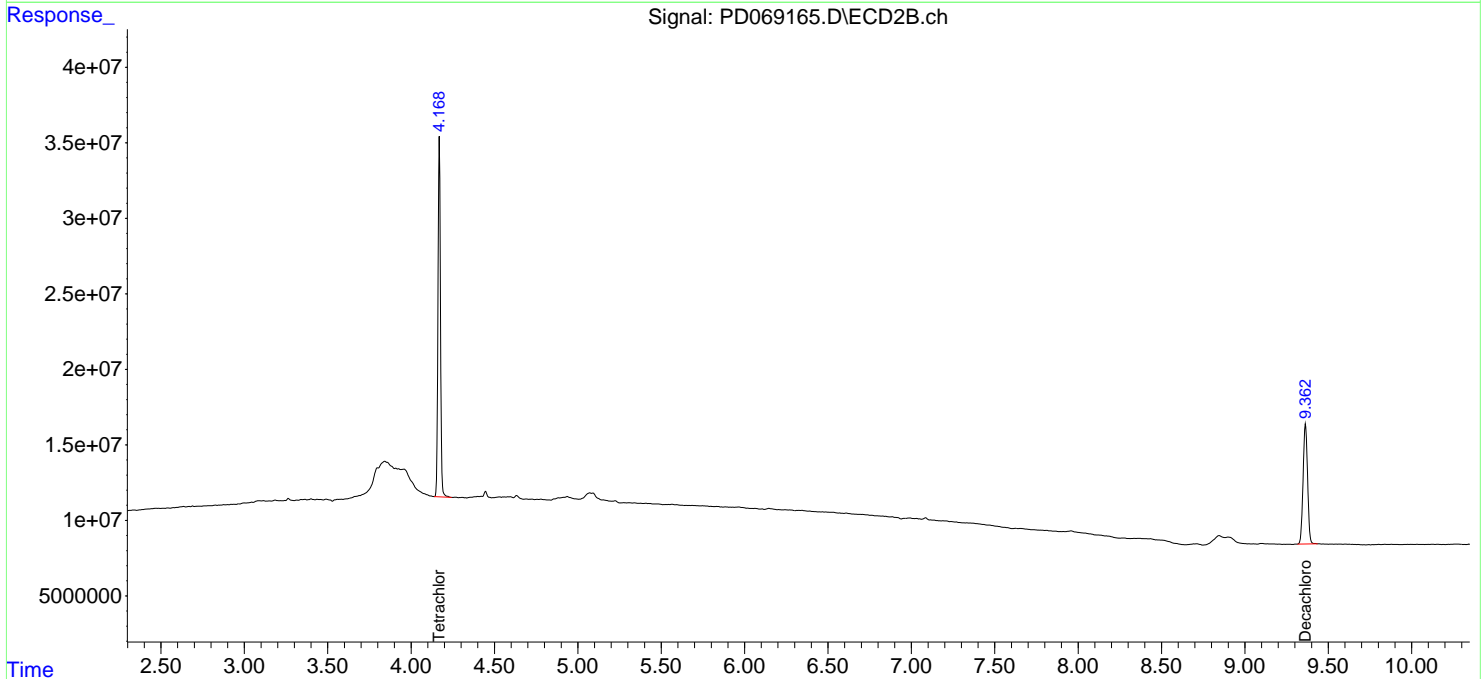
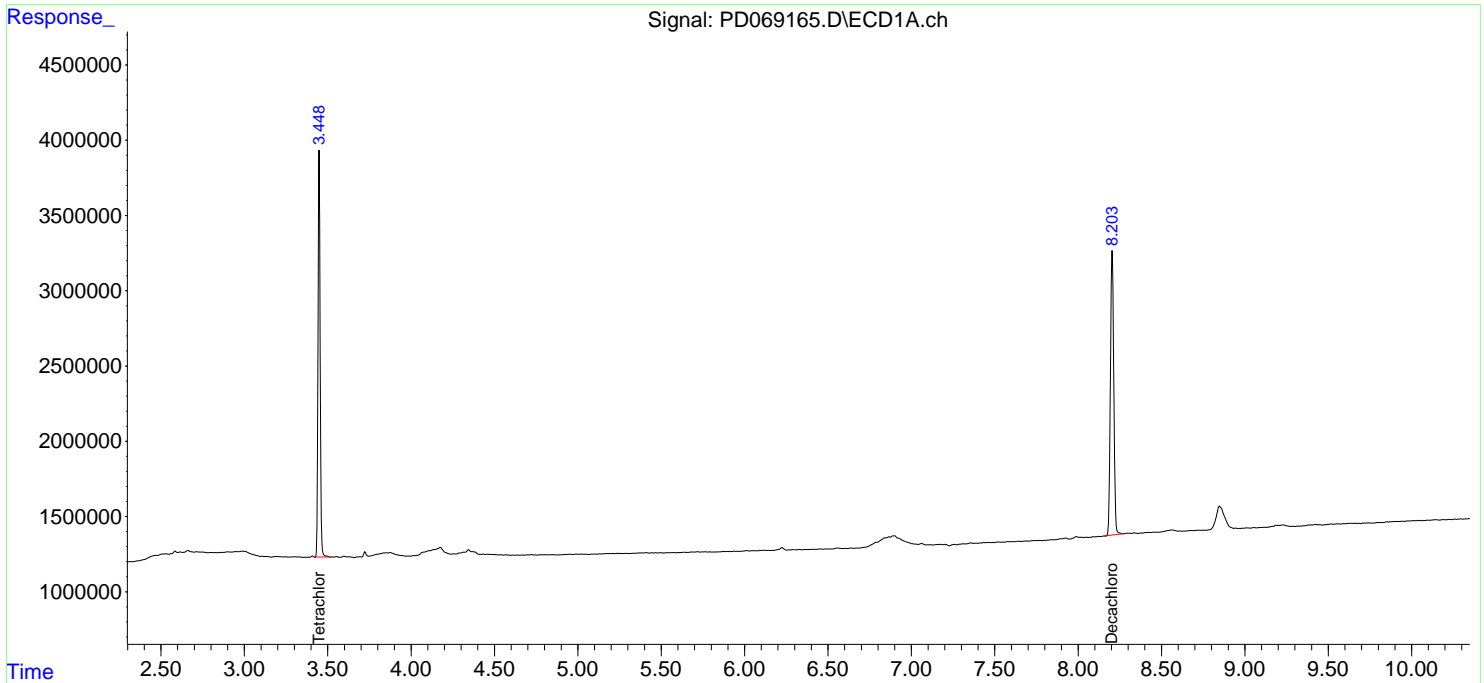
(f)=RT Delta > 1/2 Window (#)=Amounts differ by > 25% (m)=manual int.

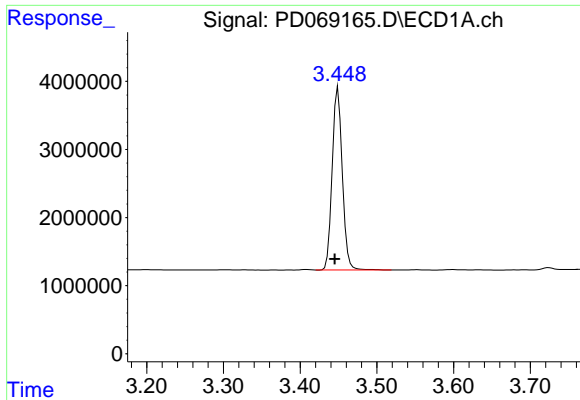
Data Path : Z:\pestpcbsrv\HPCHEM1\ECD\_D\Data\PD041822\  
Data File : PD069165.D  
Signal(s) : Signal #1: ECD1A.ch Signal #2: ECD2B.ch  
Acq On : 18 Apr 2022 08:52  
Operator : AR\AJ  
Sample : I.BLK  
Misc :  
ALS Vial : 2 Sample Multiplier: 1

Instrument :  
ECD\_D  
ClientSampleId :  
I.BLK

Integration File signal 1: autoint1.e  
Integration File signal 2: autoint2.e  
Quant Time: Apr 18 13:42:41 2022  
Quant Method : Z:\pestpcbsrv\HPCHEM1\ECD\_D\Method\PD041622.M  
Quant Title : GC Extractables  
QLast Update : Mon Apr 18 13:40:55 2022  
Response via : Initial Calibration  
Integrator: ChemStation

Volume Inj. : 2 µl  
Signal #1 Phase : ZB-MR2 Signal #2 Phase: ZB-MR1  
Signal #1 Info : 30M x 0.32mm x 0.2 Signal #2 Info : 30M x 0.32mm x 0.50µm

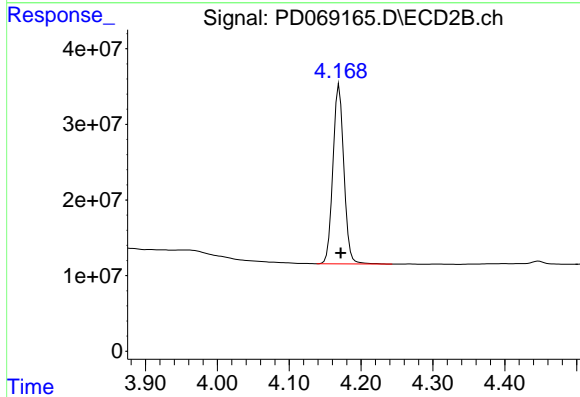




#1 Tetrachloro-m-xylene

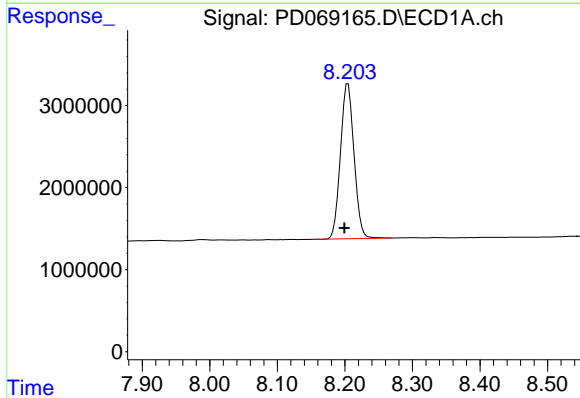
R.T.: 3.449 min  
Delta R.T.: 0.004 min  
Response: 24549342  
Conc: 22.11 ng/ml

Instrument :  
ECD\_D  
ClientSampleId :  
I.BLK



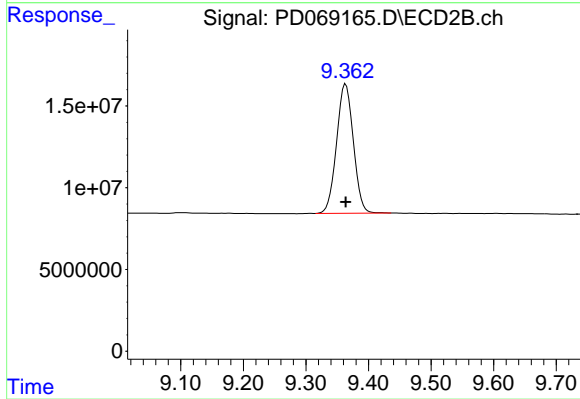
#1 Tetrachloro-m-xylene

R.T.: 4.170 min  
Delta R.T.: -0.002 min  
Response: 250451852  
Conc: 23.36 ng/ml



#28 Decachlorobiphenyl

R.T.: 8.205 min  
Delta R.T.: 0.005 min  
Response: 26349928  
Conc: 21.10 ng/ml



#28 Decachlorobiphenyl

R.T.: 9.364 min  
Delta R.T.: 0.000 min  
Response: 147953015  
Conc: 22.61 ng/ml