

Data Path : Z:\pestpcbsrv\HPCHEM1\ECD_D\Data\PD041822\
 Data File : PD069178.D
 Signal(s) : Signal #1: ECD1A.ch Signal #2: ECD2B.ch
 Acq On : 18 Apr 2022 15:10
 Operator : AR\AJ
 Sample : N2399-01
 Misc :
 ALS Vial : 6 Sample Multiplier: 1

Instrument :
 ECD_D
ClientSampleId :
 QUARTERLY-OUTFALL-002

Manual Integrations
APPROVED

Reviewed By :Abdul Mirza 04/19/2022
 Supervised By :mohammad ahmed 04/19/2022

Integration File signal 1: autoint1.e
 Integration File signal 2: autoint2.e
 Quant Time: Apr 19 04:19:44 2022
 Quant Method : Z:\pestpcbsrv\HPCHEM1\ECD_D\Method\PD041622.M
 Quant Title : GC Extractables
 QLast Update : Mon Apr 18 13:40:55 2022
 Response via : Initial Calibration
 Integrator: ChemStation

Volume Inj. : 2 µl
 Signal #1 Phase : ZB-MR2 Signal #2 Phase: ZB-MR1
 Signal #1 Info : 30M x 0.32mm x0.2 Signal #2 Info : 30M x 0.32mm x 0.50µm

Compound	RT#1	RT#2	Resp#1	Resp#2	ng/ml	ng/ml

System Monitoring Compounds						
1) SA Tetrachlo...	3.451	4.171	20147690	91084214	18.150	8.495 #
28) SA Decachlor...	8.203	9.364	18104892	69194550	14.500	10.574m#
Target Compounds						
9) A Endosulfan I	5.496	6.448	5425928	51534967	4.205m	4.772
12) B 4,4'-DDE	5.611	6.538	5423338	15729091	4.286	1.456m#

(f)=RT Delta > 1/2 Window (#)=Amounts differ by > 25% (m)=manual int.

Data Path : Z:\pestpcbsrv\HPCHEM1\ECD_D\Data\PD041822\
 Data File : PD069178.D
 Signal(s) : Signal #1: ECD1A.ch Signal #2: ECD2B.ch
 Acq On : 18 Apr 2022 15:10
 Operator : AR\AJ
 Sample : N2399-01
 Misc :
 ALS Vial : 6 Sample Multiplier: 1

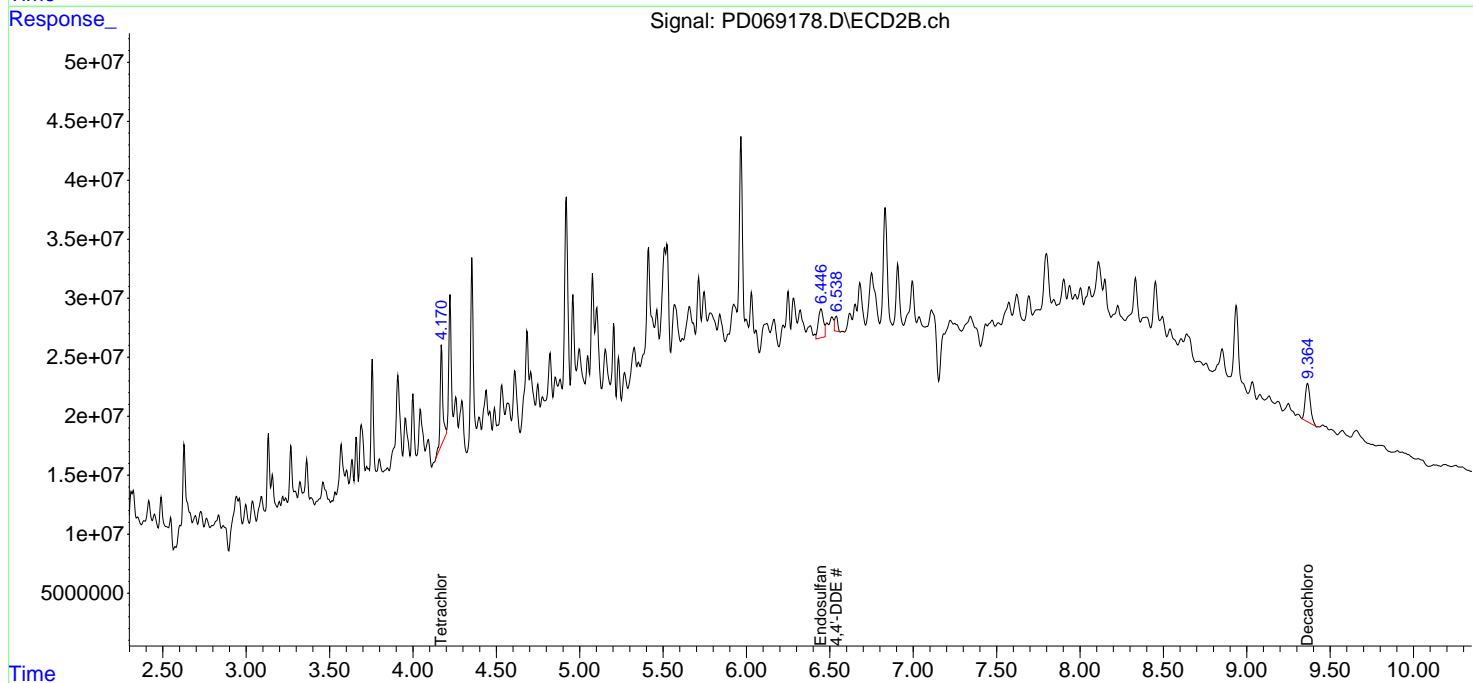
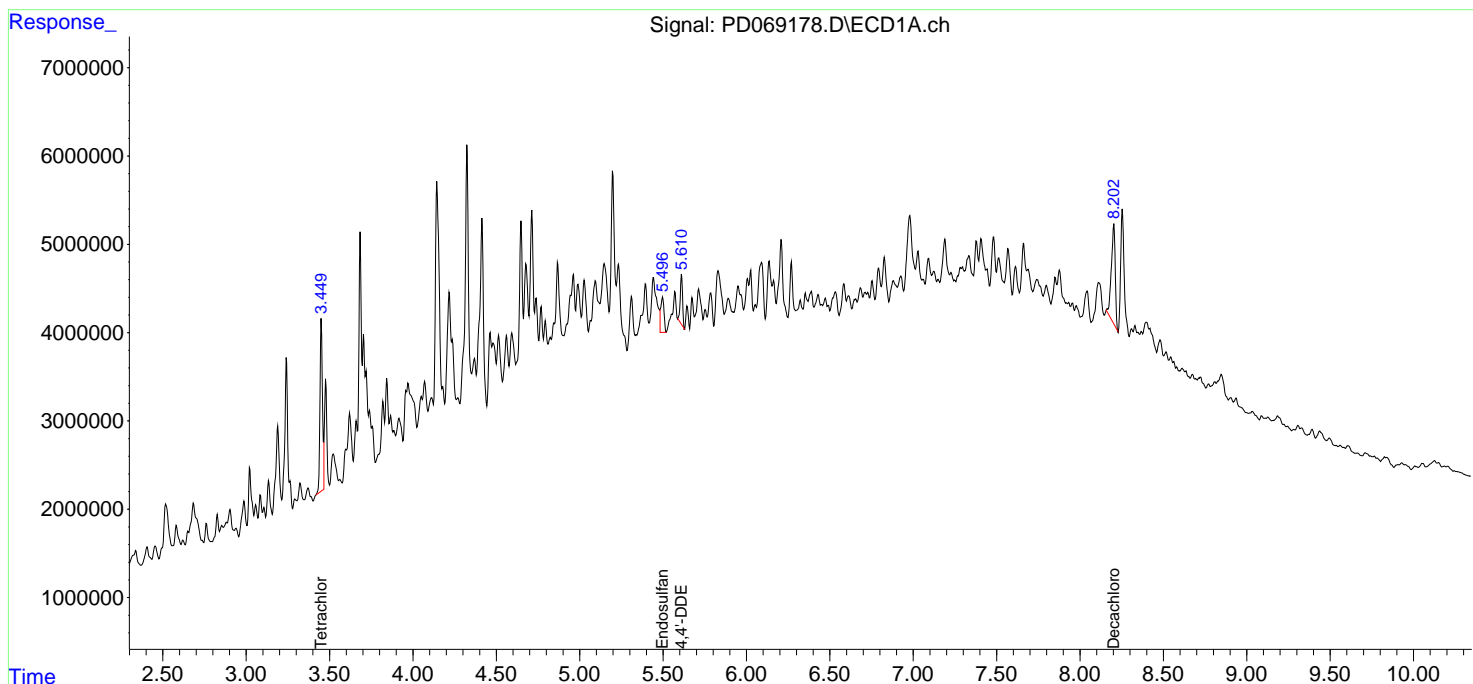
Instrument :
 ECD_D
ClientSampleId :
 QUARTERLY-OUTFALL-002

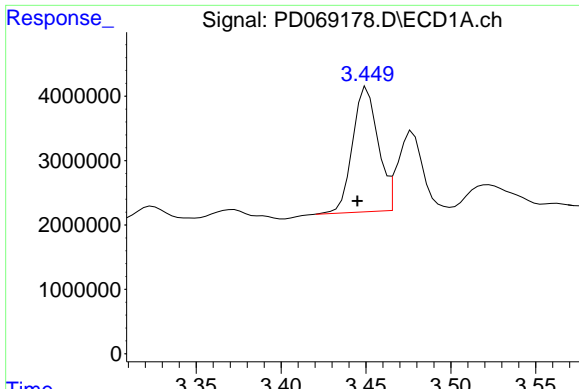
Manual Integrations
APPROVED

Reviewed By :Abdul Mirza 04/19/2022
 Supervised By :mohammad ahmed 04/19/2022

Integration File signal 1: autoint1.e
 Integration File signal 2: autoint2.e
 Quant Time: Apr 19 04:19:44 2022
 Quant Method : Z:\pestpcbsrv\HPCHEM1\ECD_D\Method\PD041622.M
 Quant Title : GC Extractables
 QLast Update : Mon Apr 18 13:40:55 2022
 Response via : Initial Calibration
 Integrator: ChemStation

Volume Inj. : 2 µl
 Signal #1 Phase : ZB-MR2 Signal #2 Phase: ZB-MR1
 Signal #1 Info : 30M x 0.32mm x0.2 Signal #2 Info : 30M x 0.32mm x 0.50µm





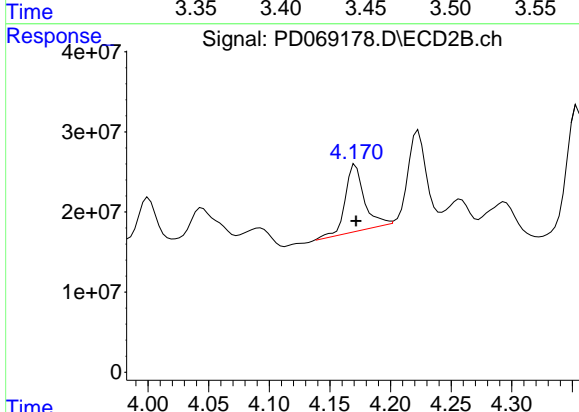
#1 Tetrachloro-m-xylene

R.T.: 3.451 min
 Delta R.T.: 0.006 min
 Response: 20147690
 Conc: 18.15 ng/ml

Instrument : ECD_D
 ClientSampleId : QUARTERLY-OUTFALL-002

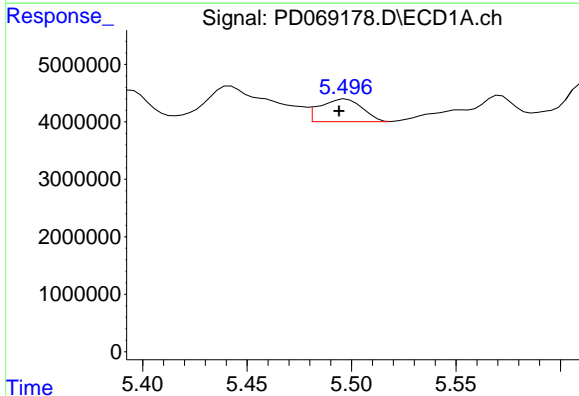
Manual Integrations
 APPROVED

Reviewed By :Abdul Mirza 04/19/2022
 Supervised By :mohammad ahmed 04/19/2022



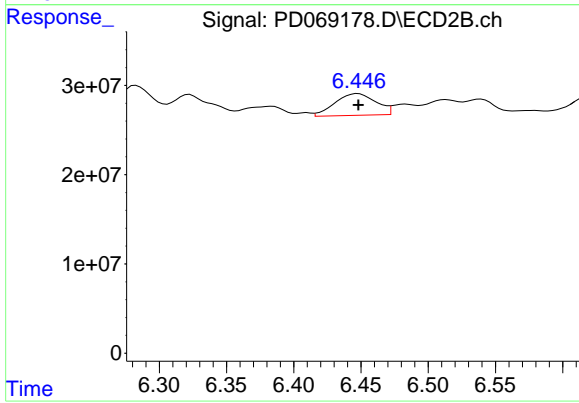
#1 Tetrachloro-m-xylene

R.T.: 4.171 min
 Delta R.T.: 0.000 min
 Response: 91084214
 Conc: 8.50 ng/ml



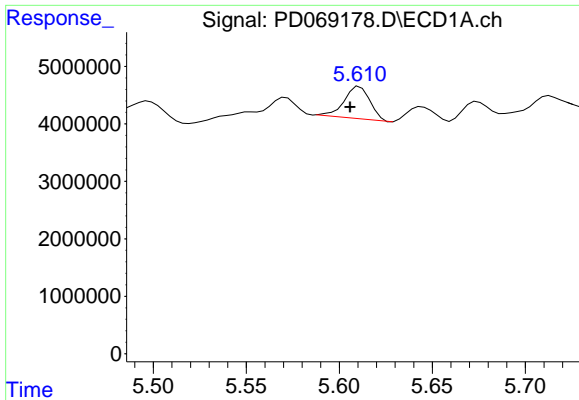
#9 Endosulfan I

R.T.: 5.496 min
 Delta R.T.: 0.002 min
 Response: 5425928
 Conc: 4.20 ng/ml m



#9 Endosulfan I

R.T.: 6.448 min
 Delta R.T.: 0.000 min
 Response: 51534967
 Conc: 4.77 ng/ml



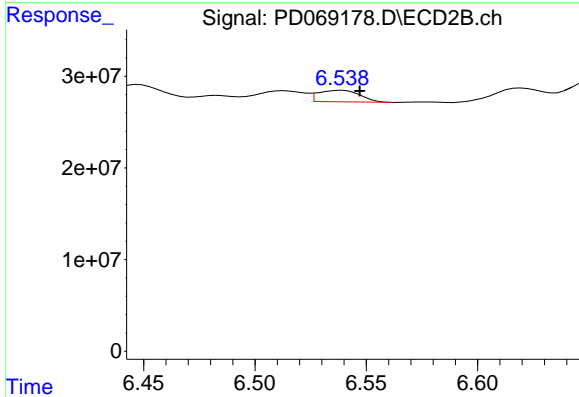
#12 4,4'-DDE

R.T.: 5.611 min
 Delta R.T.: 0.005 min
 Response: 5423338
 Conc: 4.29 ng/ml

Instrument : ECD_D
 ClientSampleId : QUARTERLY-OUTFALL-002

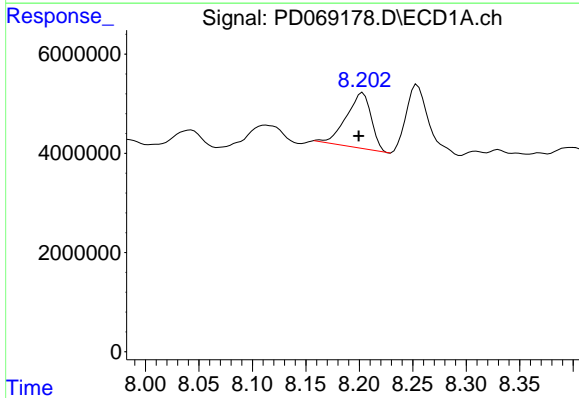
Manual Integrations
 APPROVED

Reviewed By :Abdul Mirza 04/19/2022
 Supervised By :mohammad ahmed 04/19/2022



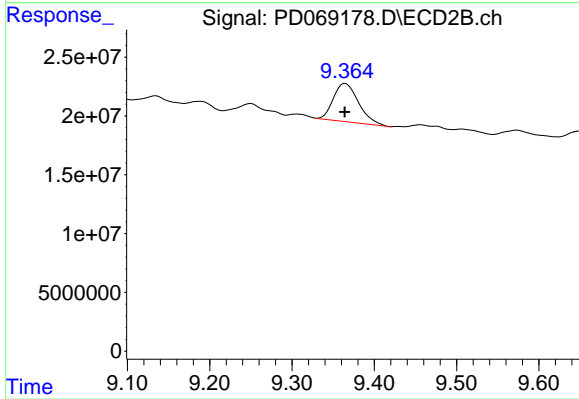
#12 4,4'-DDE

R.T.: 6.538 min
 Delta R.T.: -0.009 min
 Response: 15729091
 Conc: 1.46 ng/ml m



#28 Decachlorobiphenyl

R.T.: 8.203 min
 Delta R.T.: 0.004 min
 Response: 18104892
 Conc: 14.50 ng/ml



#28 Decachlorobiphenyl

R.T.: 9.364 min
 Delta R.T.: 0.000 min
 Response: 69194550
 Conc: 10.57 ng/ml m