

Data Path : Z:\pestpcbsrv\HPCHEM1\ECD_D\Data\PD041823\
 Data File : PD074784.D
 Signal(s) : Signal #1: ECD1A.ch Signal #2: ECD2B.ch
 Acq On : 18 Apr 2023 13:15
 Operator : AR\AJ
 Sample : PTOXICC100
 Misc :
 ALS Vial : 19 Sample Multiplier: 1

Instrument :
 ECD_D
ClientSampleId :
 PTOXICC100

Integration File signal 1: autoint1.e
 Integration File signal 2: autoint2.e
 Quant Time: Apr 18 13:57:39 2023
 Quant Method : Z:\pestpcbsrv\HPCHEM1\ECD_D\Method\DTX041823.M
 Quant Title : GC Extractables
 QLast Update : Tue Apr 18 13:56:45 2023
 Response via : Initial Calibration
 Integrator: ChemStation

Volume Inj. : 1 µl
 Signal #1 Phase : ZB-MR1 Signal #2 Phase: ZB-MR2
 Signal #1 Info : 30M x 0.32mm x 0. Signal #2 Info : 30M x 0.32mm x0.25µm

Compound	RT#1	RT#2	Resp#1	Resp#2	ng/ml	ng/ml
----------	------	------	--------	--------	-------	-------

 System Monitoring Compounds

1) SA Tetrachlo...	3.547	2.768	17882475	10359177	8.231	9.056
7) SA Decachlor...	9.092	7.919	29228723	12077698	10.626	9.928

Target Compounds

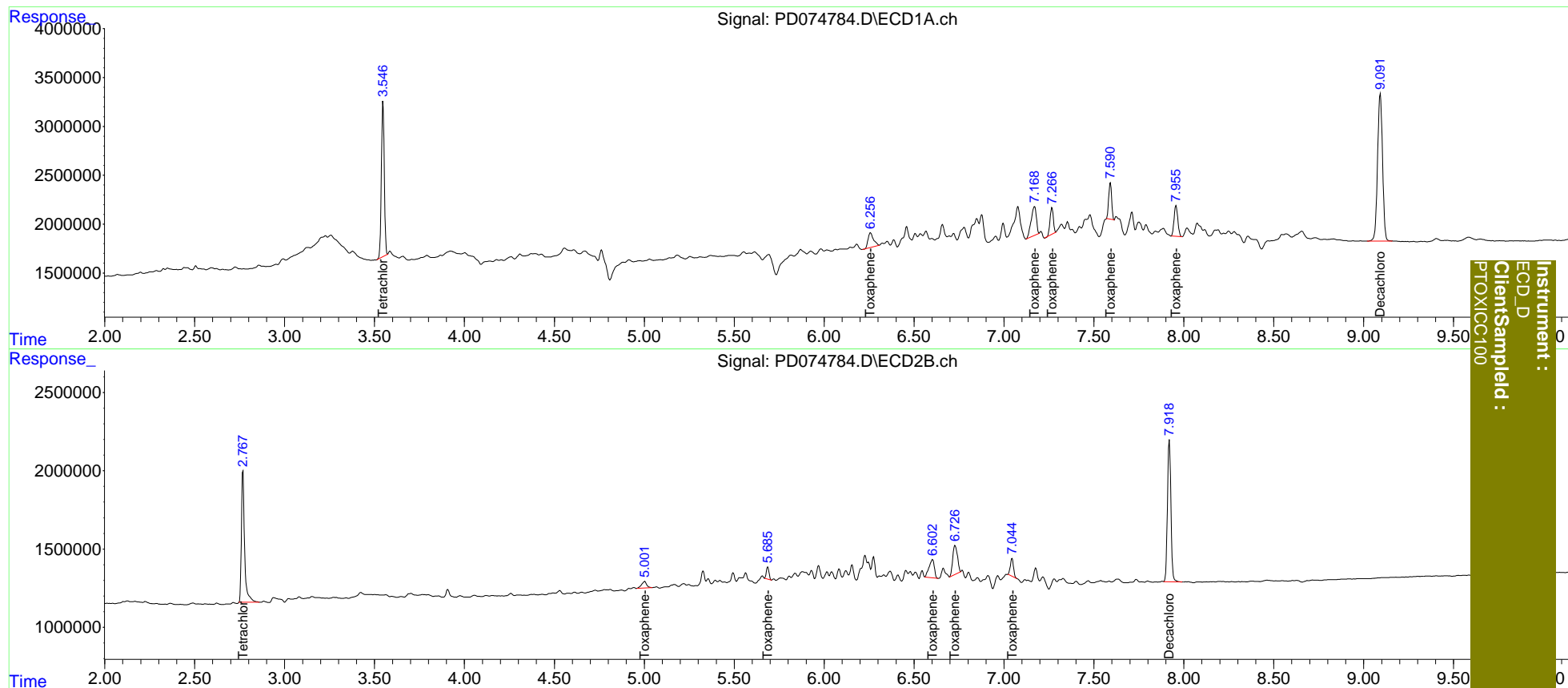
2) Toxaphene-1	6.257	5.003	3105885	838524	118.077	88.443 #
3) Toxaphene-2	7.170	5.686	5901362	805183	89.877	77.510
4) Toxaphene-3	7.267	6.603	3416479	2372871	89.209	74.085
5) Toxaphene-4	7.592	6.727	4279283	3329391	88.854	76.291
6) Toxaphene-5	7.957	7.045	4530200	1375310	88.509	73.103

 (f)=RT Delta > 1/2 Window (#)=Amounts differ by > 25% (m)=manual int.

Data Path : Z:\pestpcbsrv\HPCHEM1\ECD_D\Data\PD041823\
 Data File : PD074784.D
 Signal(s) : Signal #1: ECD1A.ch Signal #2: ECD2B.ch
 Acq On : 18 Apr 2023 13:15
 Operator : AR\AJ
 Sample : PTOXICC100
 Misc :
 ALS Vial : 19 Sample Multiplier: 1

Integration File signal 1: autoint1.e
 Integration File signal 2: autoint2.e
 Quant Time: Apr 18 13:57:39 2023
 Quant Method : Z:\pestpcbsrv\HPCHEM1\ECD_D\Method\DTX041823.M
 Quant Title : GC Extractables
 QLast Update : Tue Apr 18 13:56:45 2023
 Response via : Initial Calibration
 Integrator: ChemStation

Volume Inj. : 1 µl
 Signal #1 Phase : ZB-MR1 Signal #2 Phase: ZB-MR2
 Signal #1 Info : 30M x 0.32mm x 0. Signal #2 Info : 30M x 0.32mm x0.25µm



Instrument :
 ECD_D
 ClientSampled :
 PTOXICC100