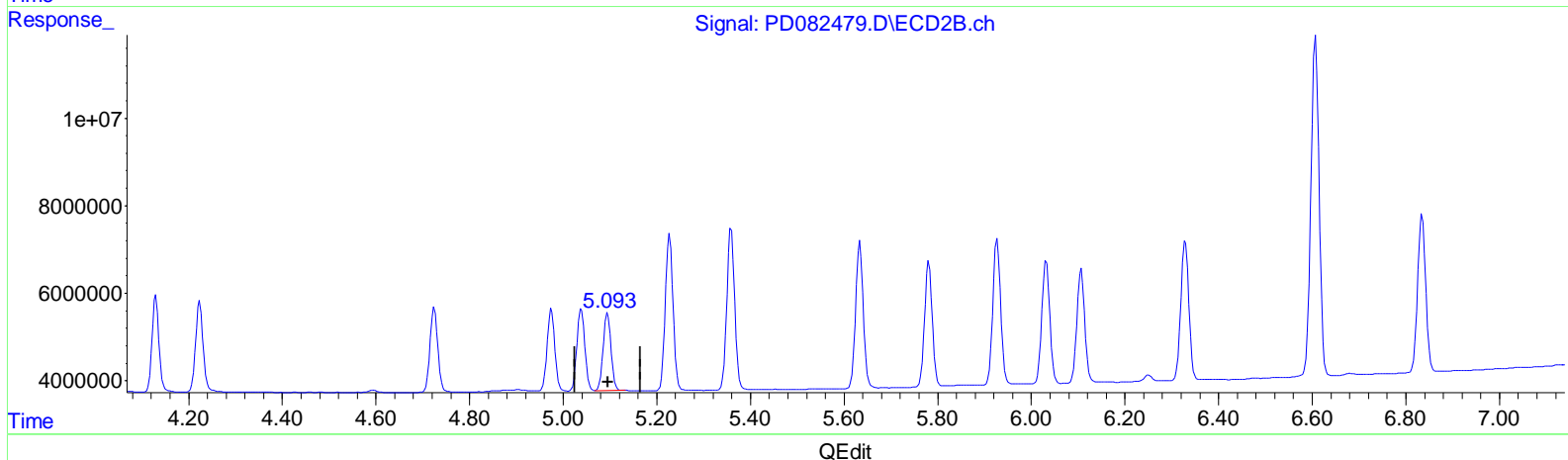
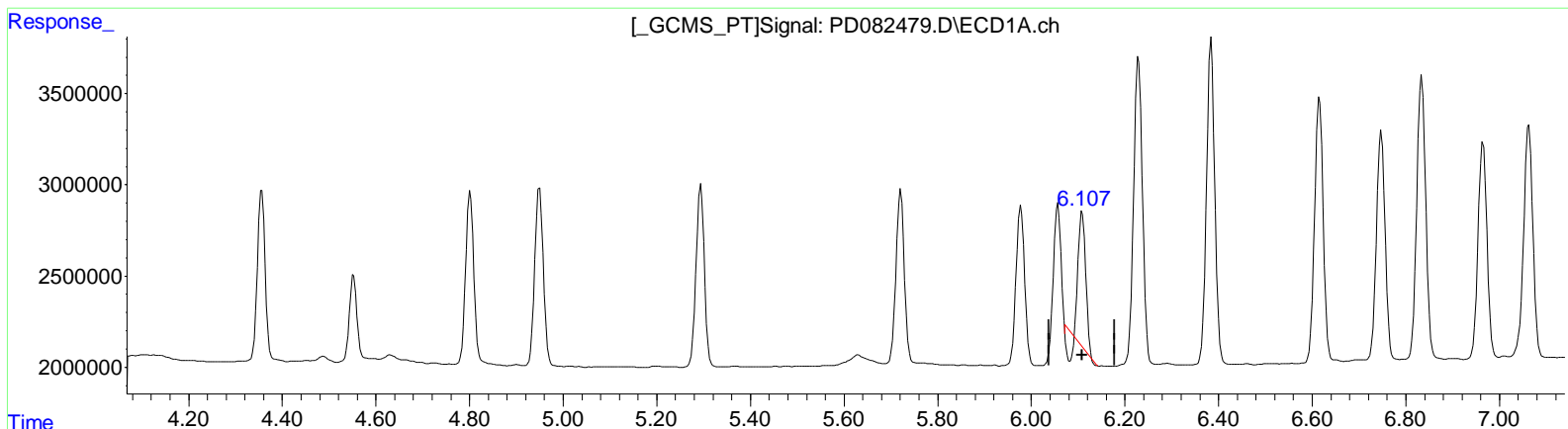


Data Path : Z:\pestpcbsrv\HPCHEM1\ECD\_D\Data\PD041824\  
 Data File : PD082479.D  
 Signal(s) : Signal #1: ECD1A.ch Signal #2: ECD2B.ch  
 Acq On : 16 Apr 2024 16:05  
 Operator : ARVAJ  
 Sample : PB160294BS  
 Misc :  
 ALS Vial : 5 Sample Multiplier: 1

Integration File signal 1: autoint1.e  
 Integration File signal 2: autoint2.e  
 Quant Time: Apr 16 21:20:43 2024  
 Quant Method : Z:\pestpcbsrv\HPCHEM1\ECD\_D\Method\PD041124CLP-TCLP.M  
 Quant Title : GC Extractables  
 QLast Update : Wed Apr 10 06:17:48 2024  
 Response via : Initial Calibration  
 Integrator: ChemStation

Volume Inj. : 1 µl  
 Signal #1 Phase : ZB-MR2 Signal #2 Phase: ZB-MR1  
 Signal #1 Info : 30M x 0.32mm x0.2 Signal #2 Info : 30M x 0.32mm x 0.50µm



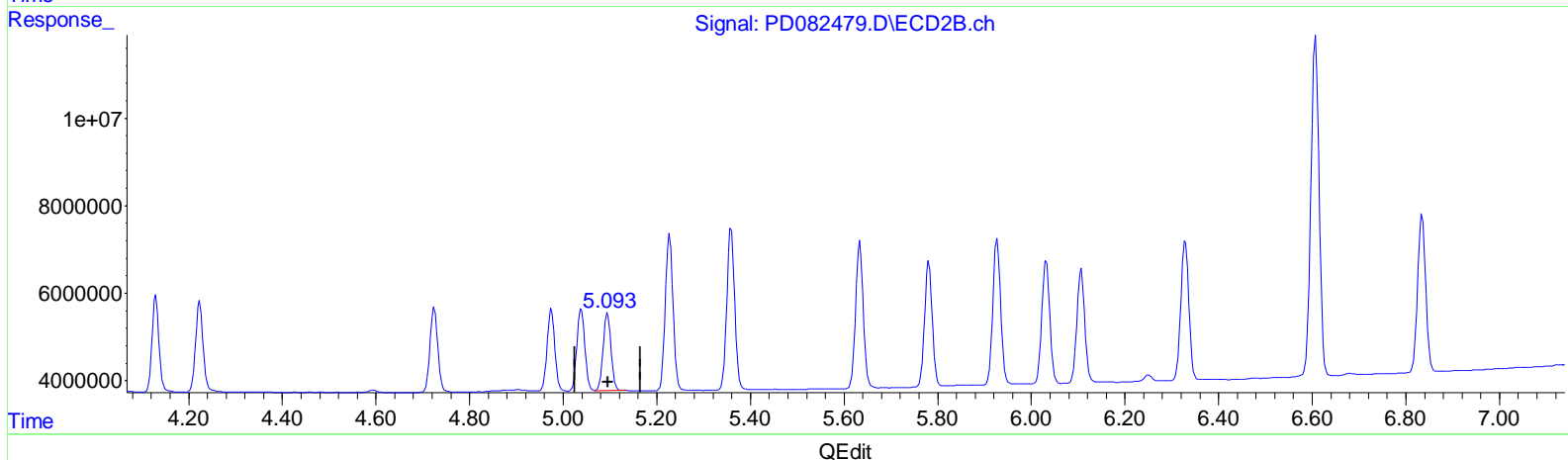
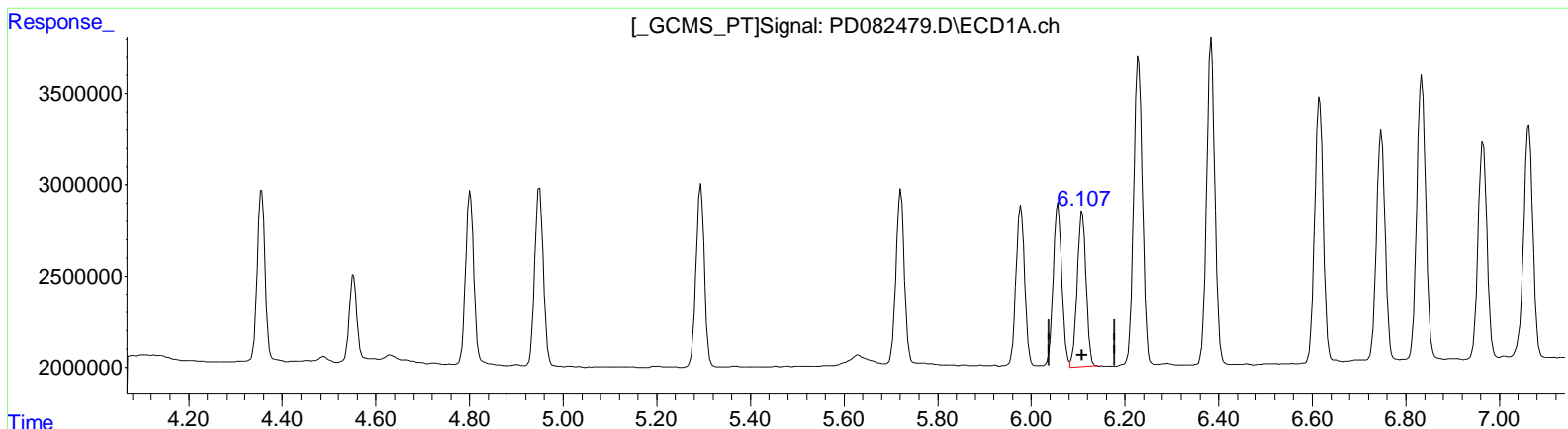
(9) Endosulfan I (A)  
 6.109min 3.232 ng/ml  
 response 6849413

(9) Endosulfan I #2 (A)  
 5.095min 5.313 ng/ml  
 response 20429201

Data Path : Z:\pestpcbsrv\HPCHEM1\ECD\_D\Data\PD041824\  
 Data File : PD082479.D  
 Signal(s) : Signal #1: ECD1A.ch Signal #2: ECD2B.ch  
 Acq On : 16 Apr 2024 16:05  
 Operator : ARVAJ  
 Sample : PB160294BS  
 Misc :  
 ALS Vial : 5 Sample Multiplier: 1

Integration File signal 1: autoint1.e  
 Integration File signal 2: autoint2.e  
 Quant Time: Apr 16 21:20:43 2024  
 Quant Method : Z:\pestpcbsrv\HPCHEM1\ECD\_D\Method\PD041124CLP-TCLP.M  
 Quant Title : GC Extractables  
 QLast Update : Wed Apr 10 06:17:48 2024  
 Response via : Initial Calibration  
 Integrator: ChemStation

Volume Inj. : 1 µl  
 Signal #1 Phase : ZB-MR2 Signal #2 Phase: ZB-MR1  
 Signal #1 Info : 30M x 0.32mm x0.2 Signal #2 Info : 30M x 0.32mm x 0.50µm



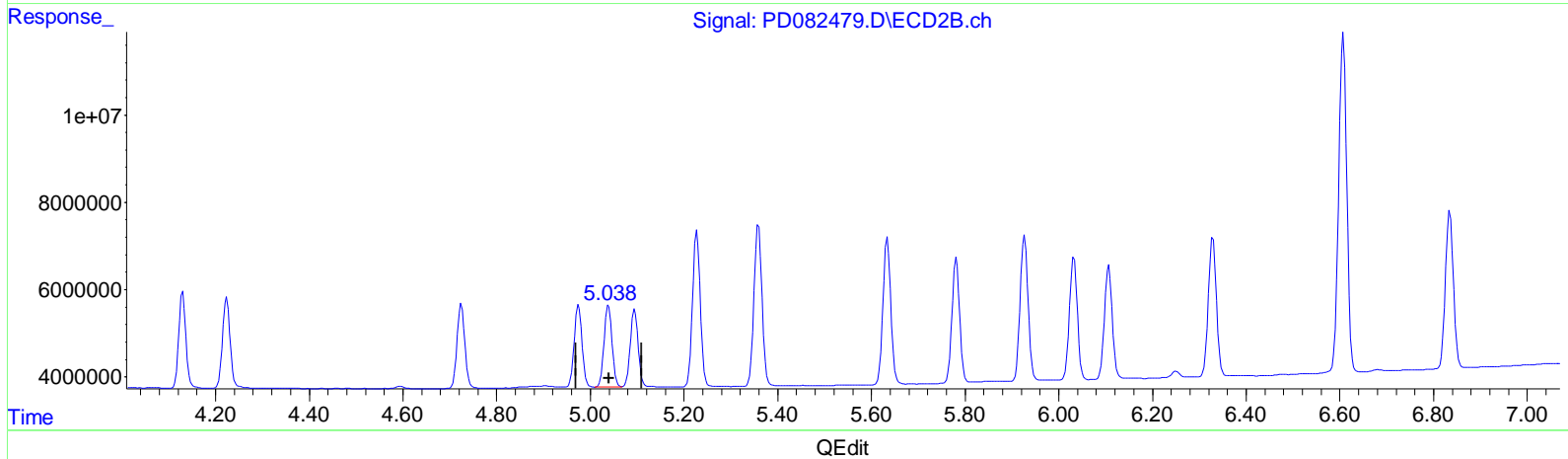
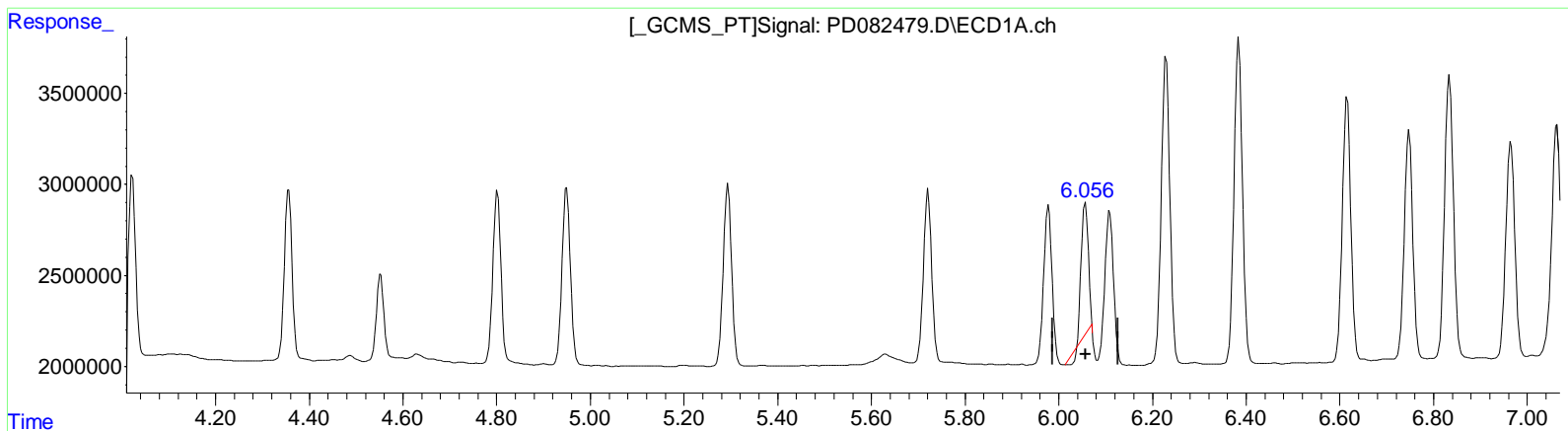
(9) Endosulfan I (A)  
 6.107min 5.371 ng/ml m  
 response 11382157

(9) Endosulfan I #2 (A)  
 5.095min 5.313 ng/ml  
 response 20429201

Data Path : Z:\pestpcbsrv\HPCHEM1\ECD\_D\Data\PD041824\  
 Data File : PD082479.D  
 Signal(s) : Signal #1: ECD1A.ch Signal #2: ECD2B.ch  
 Acq On : 16 Apr 2024 16:05  
 Operator : ARVAJ  
 Sample : PB160294BS  
 Misc :  
 ALS Vial : 5 Sample Multiplier: 1

Integration File signal 1: autoint1.e  
 Integration File signal 2: autoint2.e  
 Quant Time: Apr 16 21:20:43 2024  
 Quant Method : Z:\pestpcbsrv\HPCHEM1\ECD\_D\Method\PD041124CLP-TCLP.M  
 Quant Title : GC Extractables  
 QLast Update : Wed Apr 10 06:17:48 2024  
 Response via : Initial Calibration  
 Integrator: ChemStation

Volume Inj. : 1 µl  
 Signal #1 Phase : ZB-MR2 Signal #2 Phase: ZB-MR1  
 Signal #1 Info : 30M x 0.32mm x0.2 Signal #2 Info : 30M x 0.32mm x 0.50µm



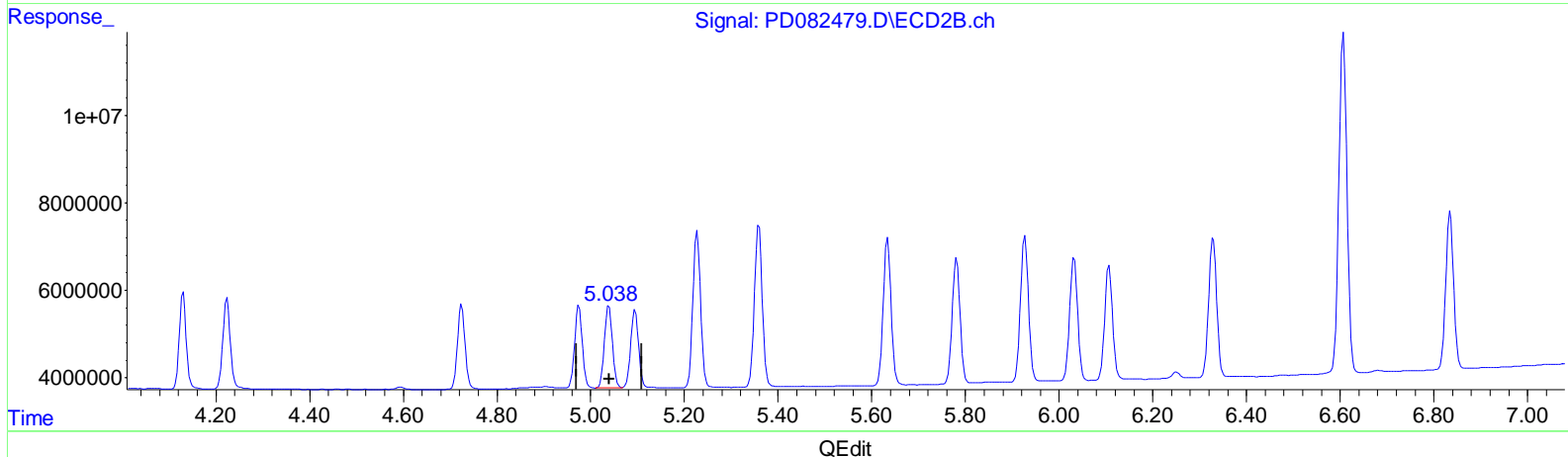
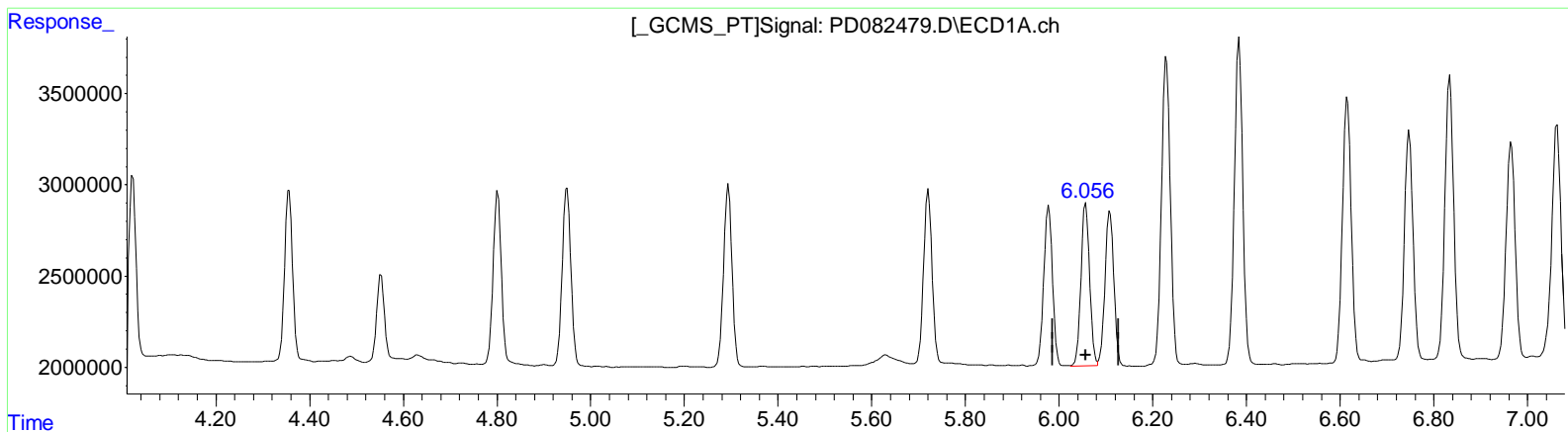
(11) cis-Chlordane (B)  
 6.057min 3.272 ng/ml  
 response 7200140

(11) cis-Chlordane #2 (B)  
 5.039min 5.336 ng/ml  
 response 22097663

Data Path : Z:\pestpcbsrv\HPCHEM1\ECD\_D\Data\PD041824\  
 Data File : PD082479.D  
 Signal(s) : Signal #1: ECD1A.ch Signal #2: ECD2B.ch  
 Acq On : 16 Apr 2024 16:05  
 Operator : ARVAJ  
 Sample : PB160294BS  
 Misc :  
 ALS Vial : 5 Sample Multiplier: 1

Integration File signal 1: autoint1.e  
 Integration File signal 2: autoint2.e  
 Quant Time: Apr 16 21:20:43 2024  
 Quant Method : Z:\pestpcbsrv\HPCHEM1\ECD\_D\Method\PD041124CLP-TCLP.M  
 Quant Title : GC Extractables  
 QLast Update : Wed Apr 10 06:17:48 2024  
 Response via : Initial Calibration  
 Integrator: ChemStation

Volume Inj. : 1 µl  
 Signal #1 Phase : ZB-MR2 Signal #2 Phase: ZB-MR1  
 Signal #1 Info : 30M x 0.32mm x0.2 Signal #2 Info : 30M x 0.32mm x 0.50µm



(11) cis-Chlordane (B)  
 6.056min 5.254 ng/ml m  
 response 11560813

(11) cis-Chlordane #2 (B)  
 5.039min 5.336 ng/ml  
 response 22097663

Data Path : Z:\pestpcbsrv\HPCHEM1\ECD\_D\Data\PD041824\  
 Data File : PD082479.D  
 Signal(s) : Signal #1: ECD1A.ch Signal #2: ECD2B.ch  
 Acq On : 16 Apr 2024 16:05  
 Operator : AR\AJ  
 Sample : PB160294BS  
 Misc :  
 ALS Vial : 5 Sample Multiplier: 1

Integration File signal 1: autoint1.e  
 Integration File signal 2: autoint2.e  
 Quant Time: Apr 16 21:20:43 2024  
 Quant Method : Z:\pestpcbsrv\HPCHEM1\ECD\_D\Method\PD041124CLP-TCLP.M  
 Quant Title : GC Extractables  
 QLast Update : Wed Apr 10 06:17:48 2024  
 Response via : Initial Calibration  
 Integrator: ChemStation

Volume Inj. : 1 µl  
 Signal #1 Phase : ZB-MR2 Signal #2 Phase: ZB-MR1  
 Signal #1 Info : 30M x 0.32mm x 0.2 Signal #2 Info : 30M x 0.32mm x 0.50µm

Compound	RT#1	RT#2	Resp#1	Resp#2	ng/ml	ng/ml
-----						
System Monitoring Compounds						
1) SA Tetrachloro...	3.565	2.776	26679768	63518429	17.402	18.303
27) SA Decachloro...	9.121	7.909	41348658	70375227	21.375	21.395
Target Compounds						
2) A alpha-BHC	4.022	3.276	11068359	25556852	4.174	4.662
3) MA gamma-BHC...	4.356	3.605	10992041	23567957	4.315	4.708
4) MA Heptachlor	4.949	3.944	12434908	24023526	4.678	4.972
5) MB Aldrin	5.294	4.224	12415775	23466042	5.027	5.054
6) B beta-BHC	4.552	3.901	5348147	10299767	4.947	4.859
7) B delta-BHC	4.802	4.130	11422942	23202676	4.440	4.590
8) B Heptachloro...	5.721	4.725	11800013	22125276	5.204	5.089
9) A Endosulfan I	6.107	5.095	11382157	20429201	5.371m	5.313
10) B trans-Chl...	5.978	4.975	11213236	21793569	5.214	5.280
11) B cis-Chloro...	6.056	5.039	11560813	22097663	5.254m	5.336
12) B 4,4'-DDE	6.229	5.228	21937889	40691552	10.224	10.247
13) MA Dieldrin	6.384	5.359	22366310	43786506	9.863	10.080
14) MA Endrin	6.615	5.634	18735121	38952947	10.144	10.475
15) B Endosulfan...	6.834	5.927	20570322	38732024	10.848	10.837
16) A 4,4'-DDD	6.748	5.781	16036860	33244367	10.013	10.483
17) MA 4,4'-DDT	7.063	6.032	17267989	33255953	10.426	9.818
18) B Endrin al...	6.965	6.107	15859795	31094337	11.408	11.443
19) B Endosulfan...	7.201	6.329	19486673	37843206	11.457	11.117
20) A Methoxychlor	7.539	6.607	48955120	93860418	57.210	56.575
21) B Endrin ke...	7.687	6.835	20593614	42649239	11.528	11.235
-----						

(f)=RT Delta > 1/2 Window (#)=Amounts differ by > 25% (m)=manual int.

Data Path : Z:\pestpcbsrv\HPCHEM1\ECD\_D\Data\PD041824\  
 Data File : PD082479.D  
 Signal(s) : Signal #1: ECD1A.ch Signal #2: ECD2B.ch  
 Acq On : 16 Apr 2024 16:05  
 Operator : ARVAJ  
 Sample : PB160294BS  
 Misc :  
 ALS Vial : 5 Sample Multiplier: 1

Integration File signal 1: autoint1.e  
 Integration File signal 2: autoint2.e  
 Quant Time: Apr 16 21:20:43 2024  
 Quant Method : Z:\pestpcbsrv\HPCHEM1\ECD\_D\Method\PD041124CLP-TCLP.M  
 Quant Title : GC Extractables  
 QLast Update : Wed Apr 10 06:17:48 2024  
 Response via : Initial Calibration  
 Integrator: ChemStation

Volume Inj. : 1 µl  
 Signal #1 Phase : ZB-MR2 Signal #2 Phase: ZB-MR1  
 Signal #1 Info : 30M x 0.32mm x0.2 Signal #2 Info : 30M x 0.32mm x 0.50µm

