

Data Path : Z:\pestpcbsrv\HPCHEM1\ECD\_D\Data\PD041922\  
 Data File : PD069198.D  
 Signal(s) : Signal #1: ECD1A.ch Signal #2: ECD2B.ch  
 Acq On : 19 Apr 2022 15:27  
 Operator : AR\AJ  
 Sample : N2374-09  
 Misc :  
 ALS Vial : 14 Sample Multiplier: 1

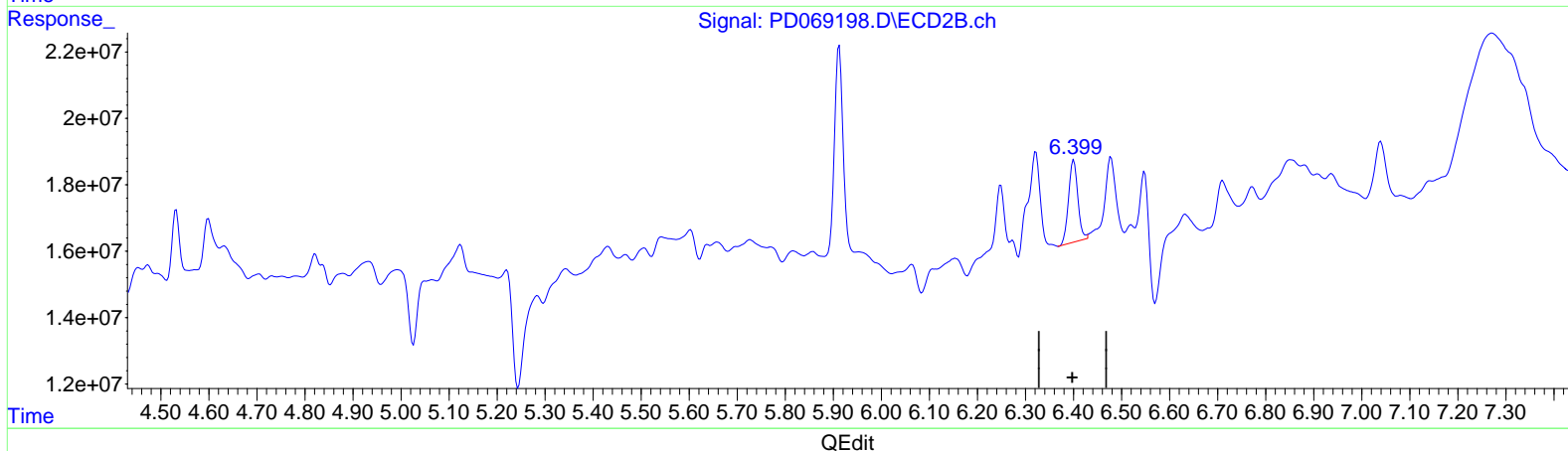
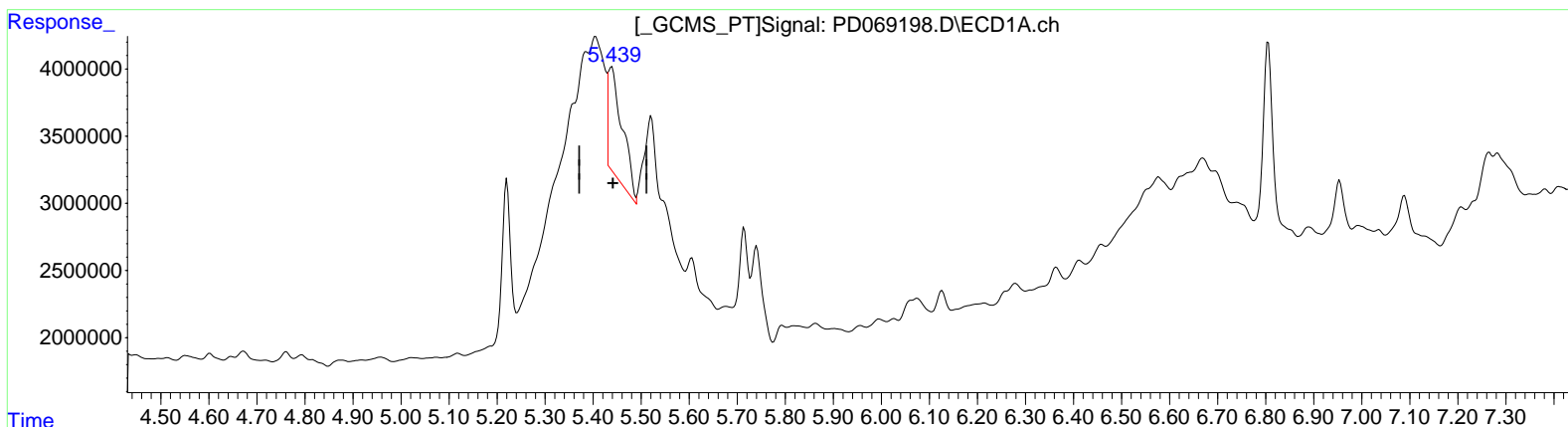
Instrument :  
 ECD\_D  
 ClientSampleId :  
 BFFF1

Manual Integrations APPROVED

Reviewed By : Abdul Mirza 04/22/2022  
 Supervised By : Yogesh Patel 04/22/2022

Integration File signal 1: autoint1.e  
 Integration File signal 2: autoint2.e  
 Quant Time: Apr 22 07:08:38 2022  
 Quant Method : Z:\pestpcbsrv\HPCHEM1\ECD\_D\Method\PD041422CLP.M  
 Quant Title : GC Extractables  
 QLast Update : Thu Apr 21 02:24:30 2022  
 Response via : Initial Calibration  
 Integrator: ChemStation

Volume Inj. : 1 µl  
 Signal #1 Phase : ZB-MR2 Signal #2 Phase: ZB-MR1  
 Signal #1 Info : 30M x 0.32mm x 0.2 Signal #2 Info : 30M x 0.32mm x 0.50µm



(11) cis-Chlordane (B)  
 5.439min 11.043 ng/ml  
 response 16482853

(11) cis-Chlordane #2 (B)  
 6.401min 2.660 ng/ml  
 response 33127710

Data Path : Z:\pestpcbsrv\HPCHEM1\ECD\_D\Data\PD041922\  
 Data File : PD069198.D  
 Signal(s) : Signal #1: ECD1A.ch Signal #2: ECD2B.ch  
 Acq On : 19 Apr 2022 15:27  
 Operator : AR\AJ  
 Sample : N2374-09  
 Misc :  
 ALS Vial : 14 Sample Multiplier: 1

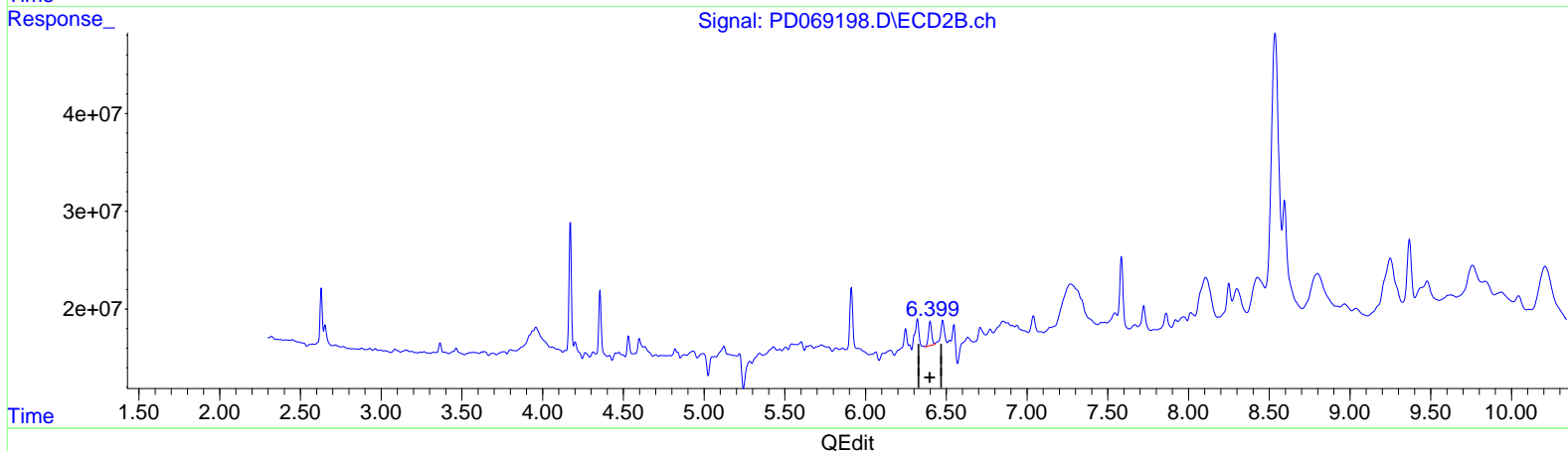
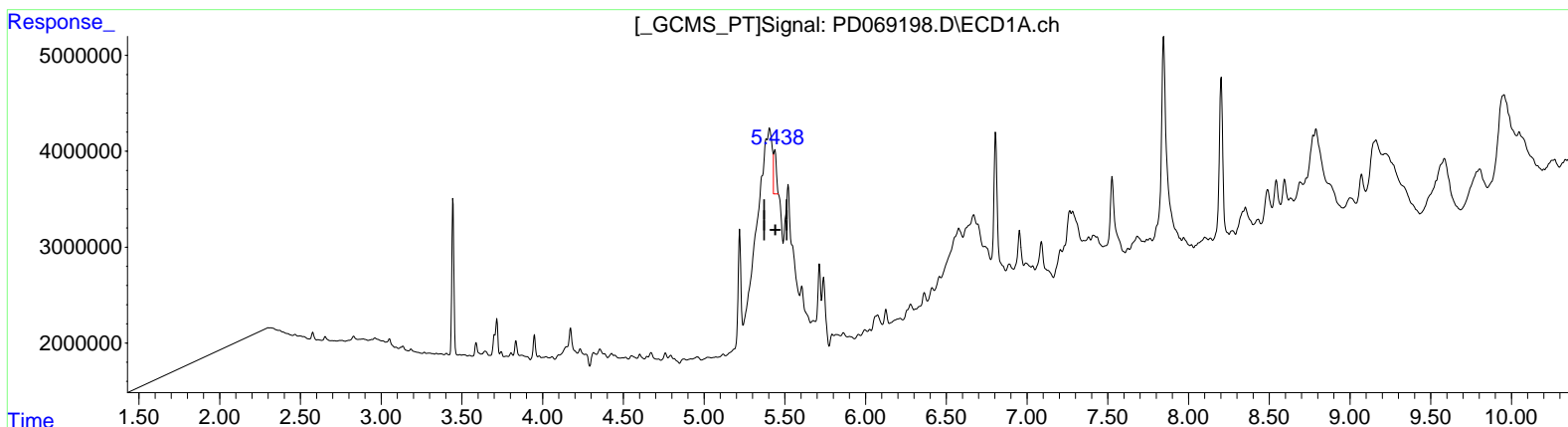
Instrument :  
 ECD\_D  
 ClientSampleId :  
 BFFF1

Manual Integrations APPROVED

Reviewed By : Abdul Mirza 04/22/2022  
 Supervised By : Yogesh Patel 04/22/2022

Integration File signal 1: autoint1.e  
 Integration File signal 2: autoint2.e  
 Quant Time: Apr 22 07:08:38 2022  
 Quant Method : Z:\pestpcbsrv\HPCHEM1\ECD\_D\Method\PD041422CLP.M  
 Quant Title : GC Extractables  
 QLast Update : Thu Apr 21 02:24:30 2022  
 Response via : Initial Calibration  
 Integrator: ChemStation

Volume Inj. : 1 µl  
 Signal #1 Phase : ZB-MR2 Signal #2 Phase: ZB-MR1  
 Signal #1 Info : 30M x 0.32mm x 0.2 Signal #2 Info : 30M x 0.32mm x 0.50µm



(11) cis-Chlordane (B)  
 5.438min 3.583 ng/ml m  
 response 5347751

(11) cis-Chlordane #2 (B)  
 6.401min 2.660 ng/ml  
 response 33127710

Data Path : Z:\pestpcbsrv\HPCHEM1\ECD\_D\Data\PD041922\  
 Data File : PD069198.D  
 Signal(s) : Signal #1: ECD1A.ch Signal #2: ECD2B.ch  
 Acq On : 19 Apr 2022 15:27  
 Operator : AR\AJ  
 Sample : N2374-09  
 Misc :  
 ALS Vial : 14 Sample Multiplier: 1

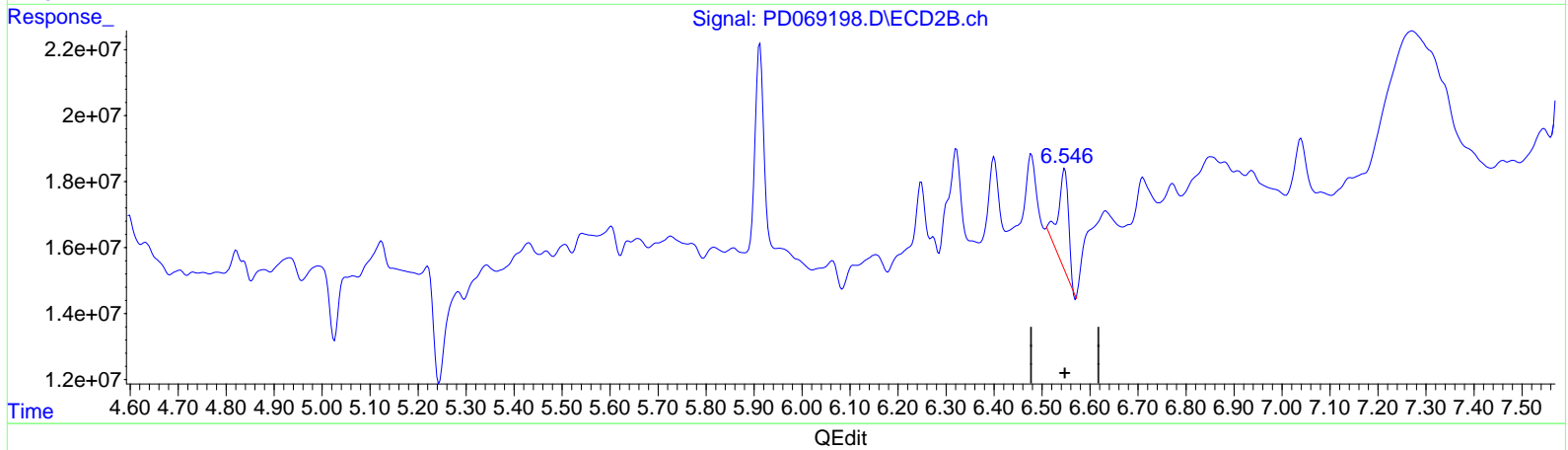
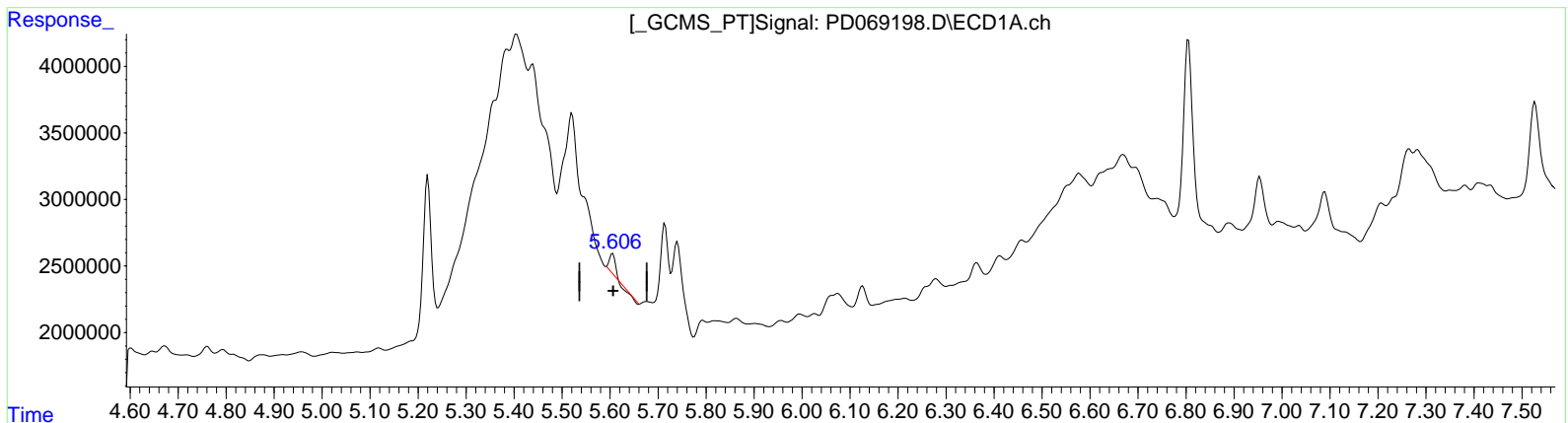
Instrument :  
 ECD\_D  
 ClientSampleId :  
 BFFF1

Manual Integrations APPROVED

Reviewed By : Abdul Mirza 04/22/2022  
 Supervised By : Yogesh Patel 04/22/2022

Integration File signal 1: autoint1.e  
 Integration File signal 2: autoint2.e  
 Quant Time: Apr 22 07:08:38 2022  
 Quant Method : Z:\pestpcbsrv\HPCHEM1\ECD\_D\Method\PD041422CLP.M  
 Quant Title : GC Extractables  
 QLast Update : Thu Apr 21 02:24:30 2022  
 Response via : Initial Calibration  
 Integrator: ChemStation

Volume Inj. : 1 µl  
 Signal #1 Phase : ZB-MR2 Signal #2 Phase: ZB-MR1  
 Signal #1 Info : 30M x 0.32mm x 0.2 Signal #2 Info : 30M x 0.32mm x 0.50µm



(12) 4,4'-DDE (B)  
 5.606min 0.848 ng/ml  
 response 1137132

(12) 4,4'-DDE #2 (B)  
 6.547min 4.185 ng/ml  
 response 45533741

Data Path : Z:\pestpcbsrv\HPCHEM1\ECD\_D\Data\PD041922\  
 Data File : PD069198.D  
 Signal(s) : Signal #1: ECD1A.ch Signal #2: ECD2B.ch  
 Acq On : 19 Apr 2022 15:27  
 Operator : AR\AJ  
 Sample : N2374-09  
 Misc :  
 ALS Vial : 14 Sample Multiplier: 1

**Instrument :**

ECD\_D

**ClientSampleId :**

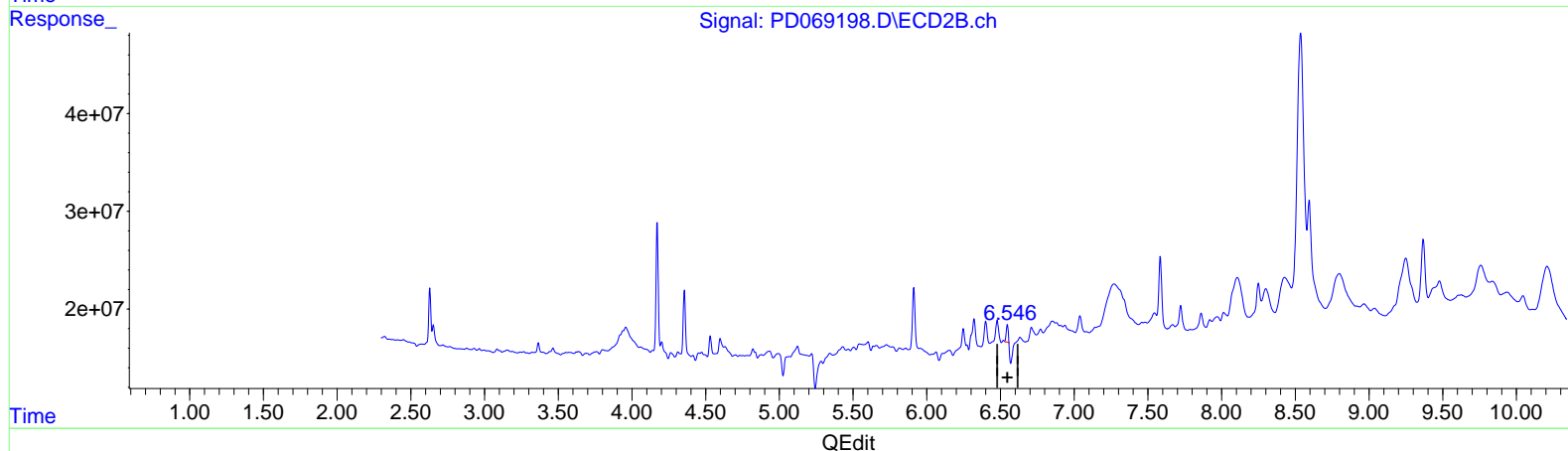
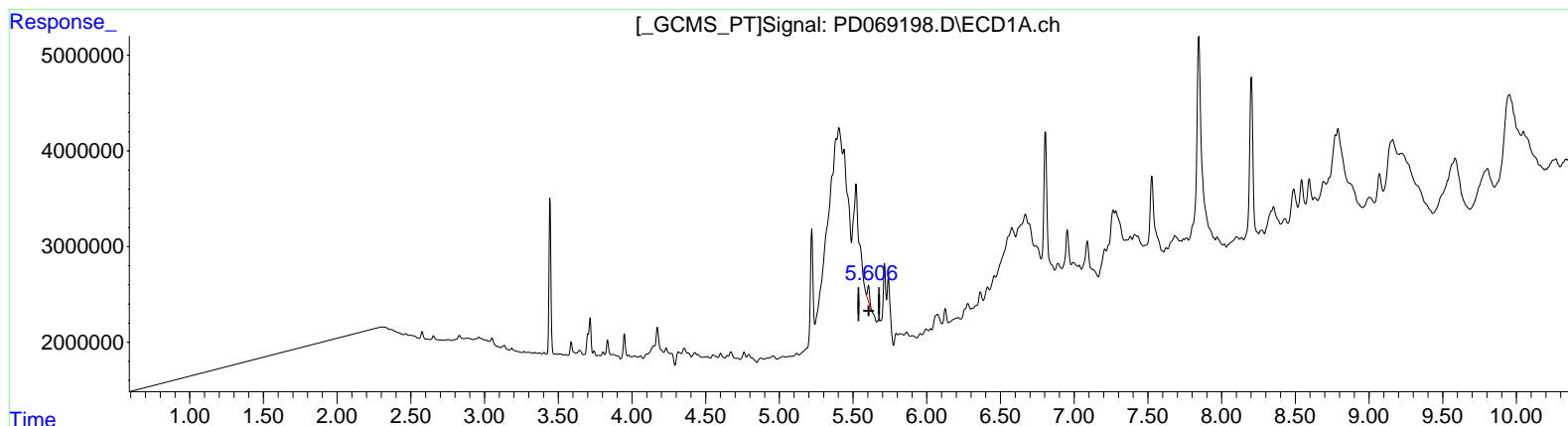
BFFF1

**Manual IntegrationsAPPROVED**

Reviewed By :Abdul Mirza 04/22/2022  
 Supervised By :Yogesh Patel 04/22/2022

Integration File signal 1: autoint1.e  
 Integration File signal 2: autoint2.e  
 Quant Time: Apr 22 07:08:38 2022  
 Quant Method : Z:\pestpcbsrv\HPCHEM1\ECD\_D\Method\PD041422CLP.M  
 Quant Title : GC Extractables  
 QLast Update : Thu Apr 21 02:24:30 2022  
 Response via : Initial Calibration  
 Integrator: ChemStation

Volume Inj. : 1 µl  
 Signal #1 Phase : ZB-MR2 Signal #2 Phase: ZB-MR1  
 Signal #1 Info : 30M x 0.32mm x0.2 Signal #2 Info : 30M x 0.32mm x 0.50µm



(12) 4,4'-DDE (B)  
 5.606min 1.214 ng/ml m  
 response 1628688

(12) 4,4'-DDE #2 (B)  
 6.546min 1.489 ng/ml m  
 response 16195097

Data Path : Z:\pestpcbsrv\HPCHEM1\ECD\_D\Data\PD041922\  
 Data File : PD069198.D  
 Signal(s) : Signal #1: ECD1A.ch Signal #2: ECD2B.ch  
 Acq On : 19 Apr 2022 15:27  
 Operator : AR\AJ  
 Sample : N2374-09  
 Misc :  
 ALS Vial : 14 Sample Multiplier: 1

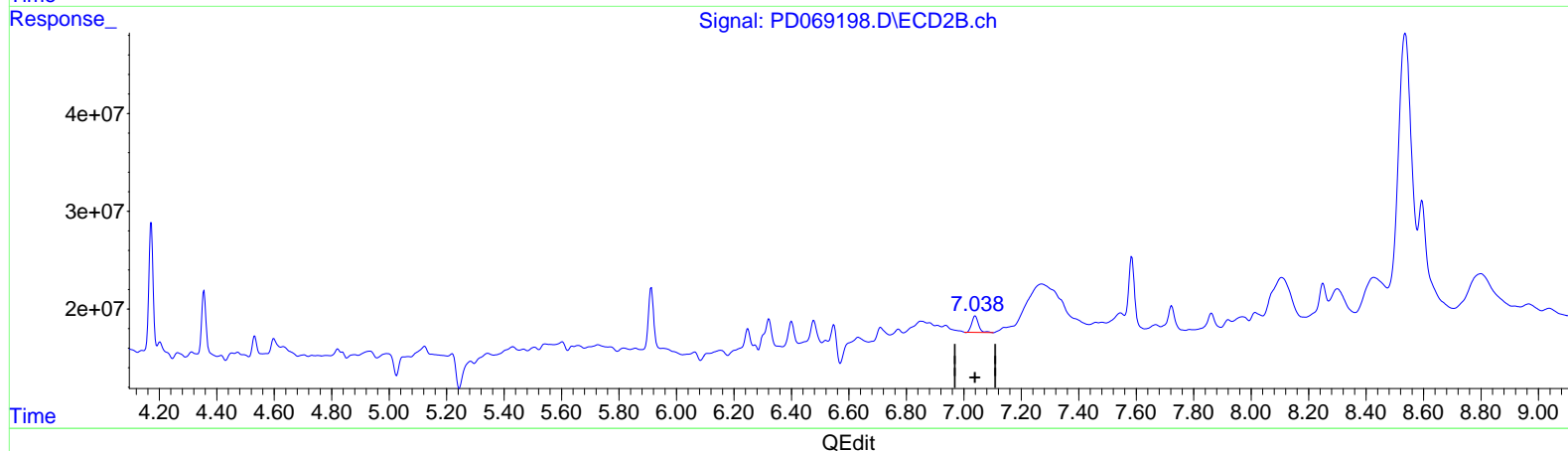
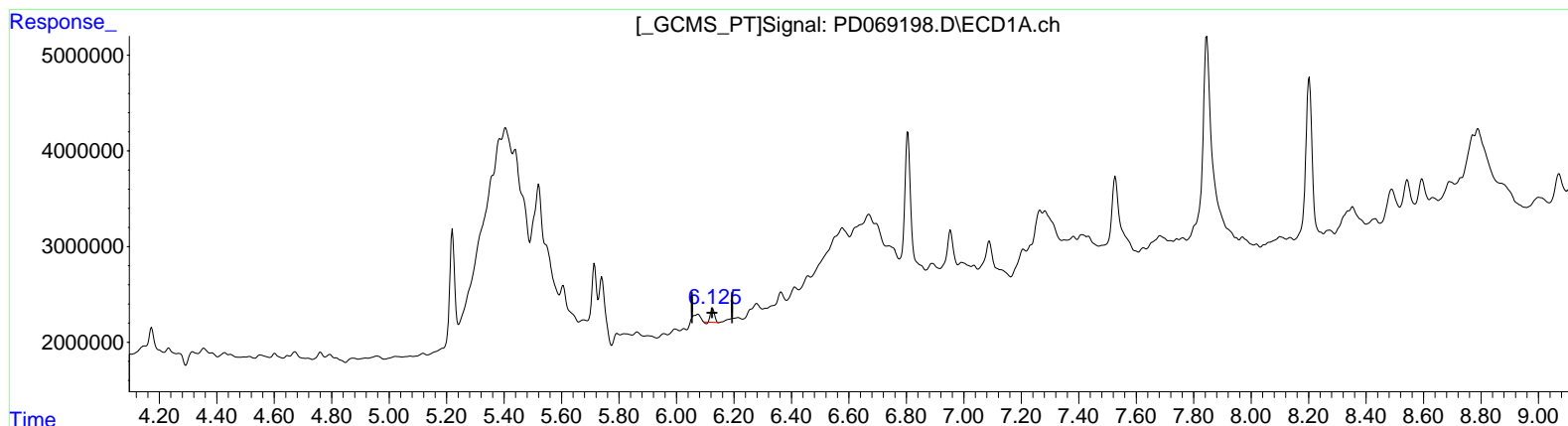
Instrument :  
 ECD\_D  
 ClientSampleId :  
 BFFF1

Manual Integrations APPROVED

Reviewed By : Abdul Mirza 04/22/2022  
 Supervised By : Yogesh Patel 04/22/2022

Integration File signal 1: autoint1.e  
 Integration File signal 2: autoint2.e  
 Quant Time: Apr 22 07:08:38 2022  
 Quant Method : Z:\pestpcbsrv\HPCHEM1\ECD\_D\Method\PD041422CLP.M  
 Quant Title : GC Extractables  
 QLast Update : Thu Apr 21 02:24:30 2022  
 Response via : Initial Calibration  
 Integrator: ChemStation

Volume Inj. : 1 µl  
 Signal #1 Phase : ZB-MR2 Signal #2 Phase: ZB-MR1  
 Signal #1 Info : 30M x 0.32mm x 0.2 Signal #2 Info : 30M x 0.32mm x 0.50µm



(16) 4,4'-DDD (A)  
 6.126min 1.114 ng/ml  
 response 1358420

(16) 4,4'-DDD #2 (A)  
 7.040min 2.950 ng/ml  
 response 27623434

Data Path : Z:\pestpcbsrv\HPCHEM1\ECD\_D\Data\PD041922\  
 Data File : PD069198.D  
 Signal(s) : Signal #1: ECD1A.ch Signal #2: ECD2B.ch  
 Acq On : 19 Apr 2022 15:27  
 Operator : AR\AJ  
 Sample : N2374-09  
 Misc :  
 ALS Vial : 14 Sample Multiplier: 1

**Instrument :**

ECD\_D

**ClientSampleId :**

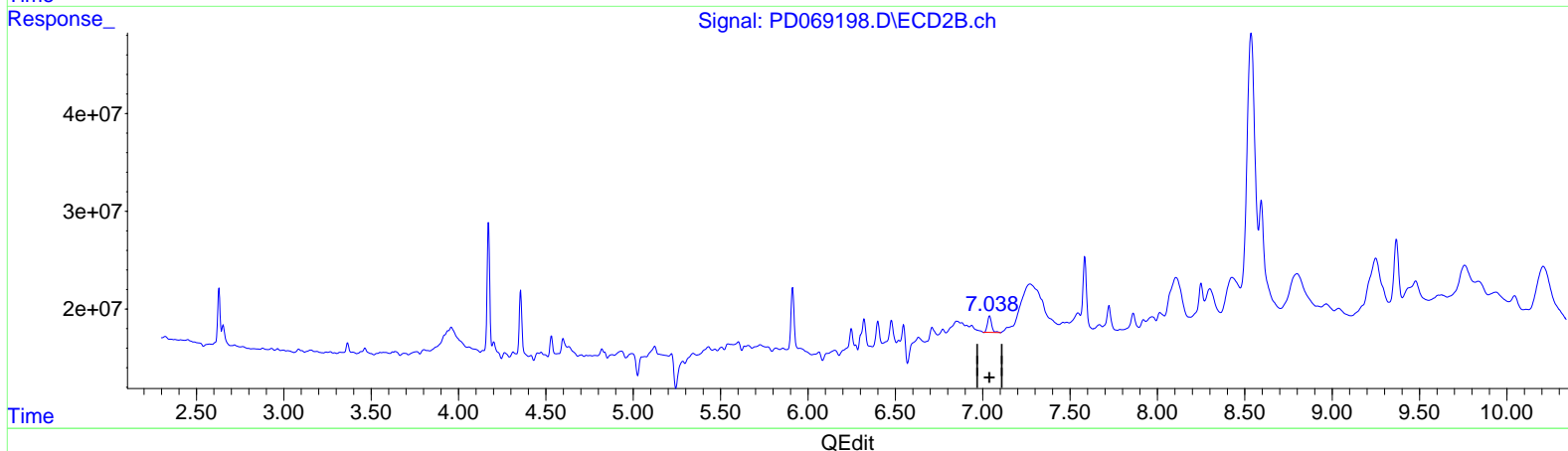
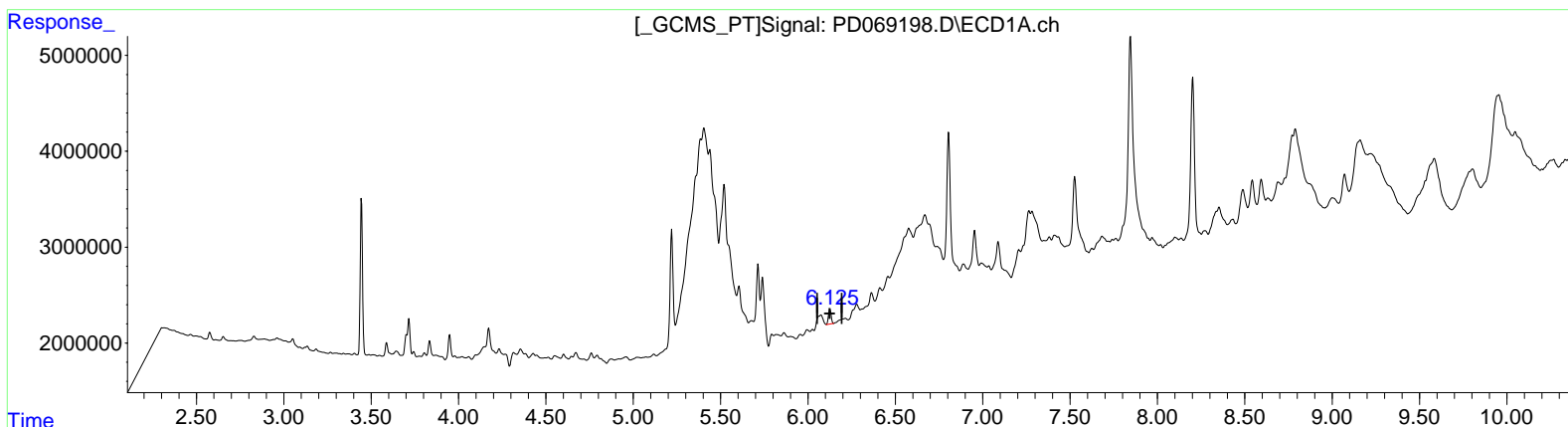
BFFF1

**Manual IntegrationsAPPROVED**

Reviewed By :Abdul Mirza 04/22/2022  
 Supervised By :Yogesh Patel 04/22/2022

Integration File signal 1: autoint1.e  
 Integration File signal 2: autoint2.e  
 Quant Time: Apr 22 07:08:38 2022  
 Quant Method : Z:\pestpcbsrv\HPCHEM1\ECD\_D\Method\PD041422CLP.M  
 Quant Title : GC Extractables  
 QLast Update : Thu Apr 21 02:24:30 2022  
 Response via : Initial Calibration  
 Integrator: ChemStation

Volume Inj. : 1 µl  
 Signal #1 Phase : ZB-MR2 Signal #2 Phase: ZB-MR1  
 Signal #1 Info : 30M x 0.32mm x0.2 Signal #2 Info : 30M x 0.32mm x 0.50µm



(16) 4,4'-DDD (A)  
 6.125min 1.368 ng/ml m  
 response 1667755

(16) 4,4'-DDD #2 (A)  
 7.040min 2.950 ng/ml  
 response 27623434

Data Path : Z:\pestpcbsrv\HPCHEM1\ECD\_D\Data\PD041922\  
 Data File : PD069198.D  
 Signal(s) : Signal #1: ECD1A.ch Signal #2: ECD2B.ch  
 Acq On : 19 Apr 2022 15:27  
 Operator : AR\AJ  
 Sample : N2374-09  
 Misc :  
 ALS Vial : 14 Sample Multiplier: 1

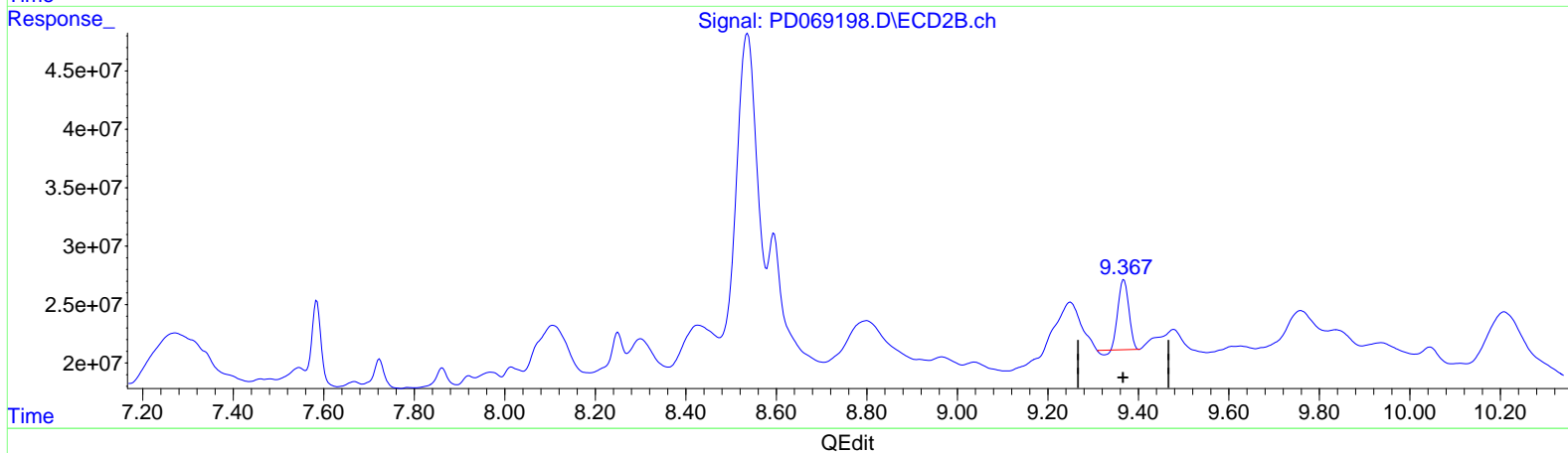
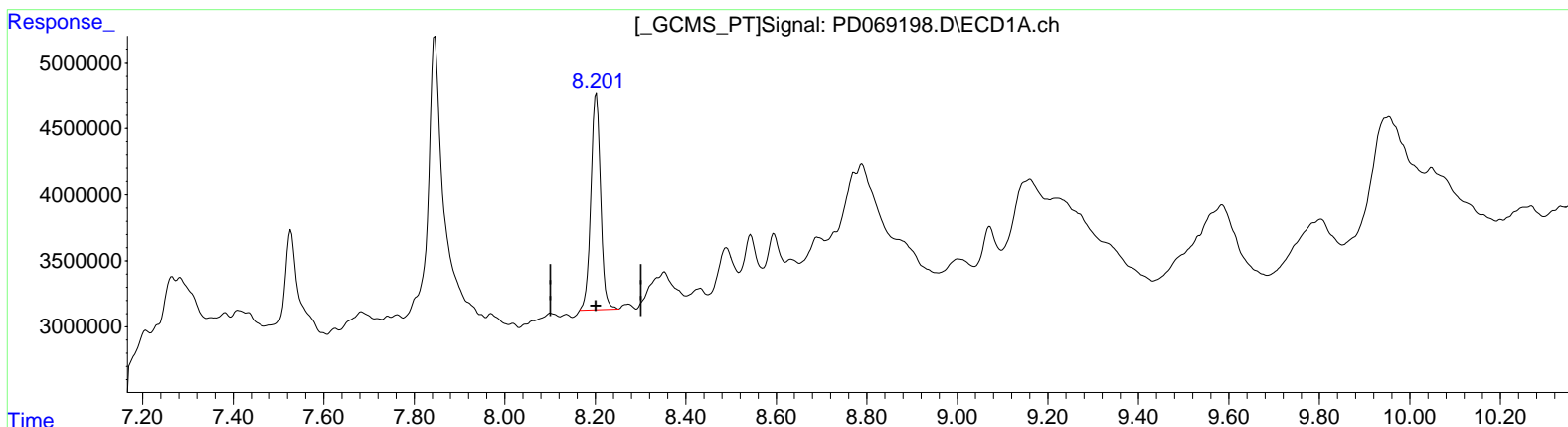
Instrument :  
 ECD\_D  
 ClientSampleId :  
 BFFF1

Manual Integrations APPROVED

Reviewed By : Abdul Mirza 04/22/2022  
 Supervised By : Yogesh Patel 04/22/2022

Integration File signal 1: autoint1.e  
 Integration File signal 2: autoint2.e  
 Quant Time: Apr 22 07:08:38 2022  
 Quant Method : Z:\pestpcbsrv\HPCHEM1\ECD\_D\Method\PD041422CLP.M  
 Quant Title : GC Extractables  
 QLast Update : Thu Apr 21 02:24:30 2022  
 Response via : Initial Calibration  
 Integrator: ChemStation

Volume Inj. : 1 µl  
 Signal #1 Phase : ZB-MR2 Signal #2 Phase: ZB-MR1  
 Signal #1 Info : 30M x 0.32mm x 0.2 Signal #2 Info : 30M x 0.32mm x 0.50µm



(27) Decachlorobiphenyl (SA)

8.202min 18.385 ng/ml

response 24448751

(27) Decachlorobiphenyl #2 (SA)

9.368min 13.600 ng/ml

response 95639153

Data Path : Z:\pestpcbsrv\HPCHEM1\ECD\_D\Data\PD041922\  
 Data File : PD069198.D  
 Signal(s) : Signal #1: ECD1A.ch Signal #2: ECD2B.ch  
 Acq On : 19 Apr 2022 15:27  
 Operator : AR\AJ  
 Sample : N2374-09  
 Misc :  
 ALS Vial : 14 Sample Multiplier: 1

**Instrument :**

ECD\_D

**ClientSampleId :**

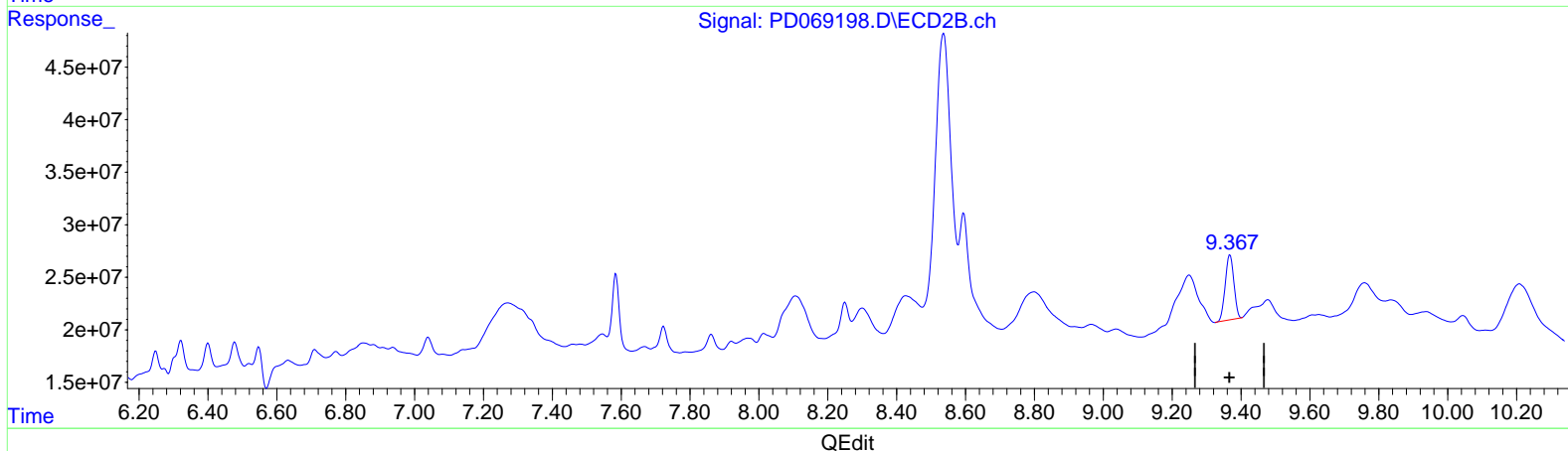
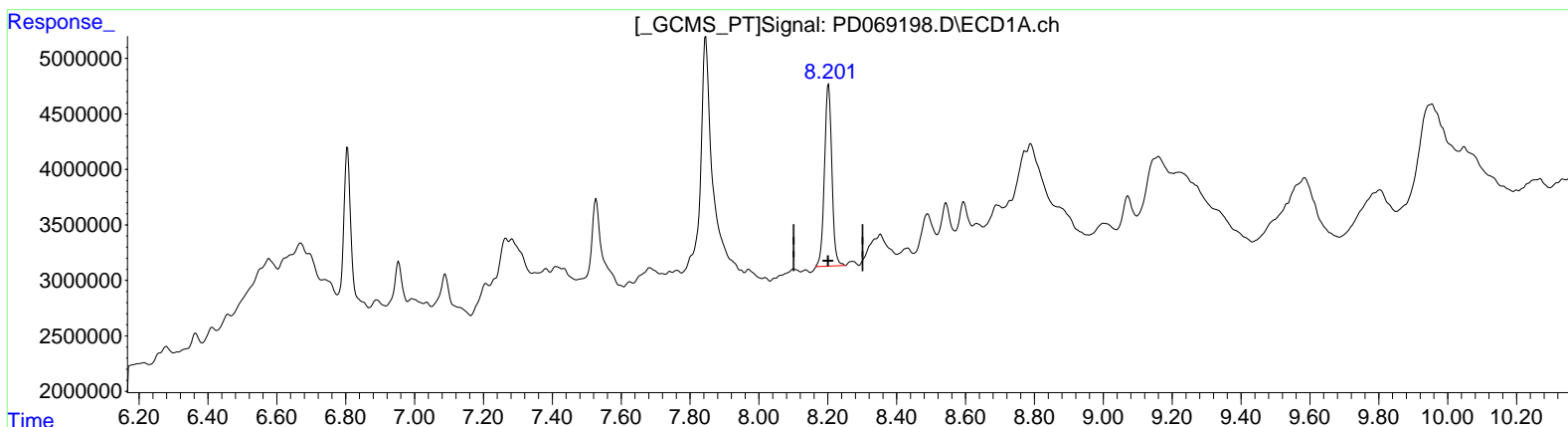
BFFF1

**Manual IntegrationsAPPROVED**

Reviewed By :Abdul Mirza 04/22/2022  
 Supervised By :Yogesh Patel 04/22/2022

Integration File signal 1: autoint1.e  
 Integration File signal 2: autoint2.e  
 Quant Time: Apr 22 07:08:38 2022  
 Quant Method : Z:\pestpcbsrv\HPCHEM1\ECD\_D\Method\PD041422CLP.M  
 Quant Title : GC Extractables  
 QLast Update : Thu Apr 21 02:24:30 2022  
 Response via : Initial Calibration  
 Integrator: ChemStation

Volume Inj. : 1 µl  
 Signal #1 Phase : ZB-MR2 Signal #2 Phase: ZB-MR1  
 Signal #1 Info : 30M x 0.32mm x0.2 Signal #2 Info : 30M x 0.32mm x 0.50µm



(27) Decachlorobiphenyl (SA)

8.202min 18.385 ng/ml

response 24448751

(27) Decachlorobiphenyl #2 (SA)

9.367min 15.292 ng/ml m

response 107538336