

Data Path : Z:\pestpcbsrv\HPCHEM1\ECD_D\Data\PD042021\
 Data File : PD062217.D
 Signal(s) : Signal #1: ECD1A.ch Signal #2: ECD2B.ch
 Acq On : 20 Apr 2021 12:55
 Operator : AR\AJ
 Sample : M2031-14
 Misc :
 ALS Vial : 17 Sample Multiplier: 1

Instrument :
 ECD_D
ClientSampled :
 BG532

Manual Integrations
APPROVED
 Ankita
 4/21/2021 3:21:30 PM

Integration File signal 1: autoint1.e
 Integration File signal 2: autoint2.e
 Quant Time: Apr 21 02:15:25 2021
 Quant Method : Z:\pestpcbsrv\HPCHEM1\ECD_D\Method\PD040321CLP.M
 Quant Title : GC Extractables
 QLast Update : Sat Apr 03 05:02:01 2021
 Response via : Initial Calibration
 Integrator: ChemStation

Volume Inj. : 1 µl
 Signal #1 Phase : ZB-MR2 Signal #2 Phase: ZB-MR1
 Signal #1 Info : 30M x 0.32mm x0.2 Signal #2 Info : 30M x 0.32mm x 0.50µm

Compound	RT#1	RT#2	Resp#1	Resp#2	ng/ml	ng/ml

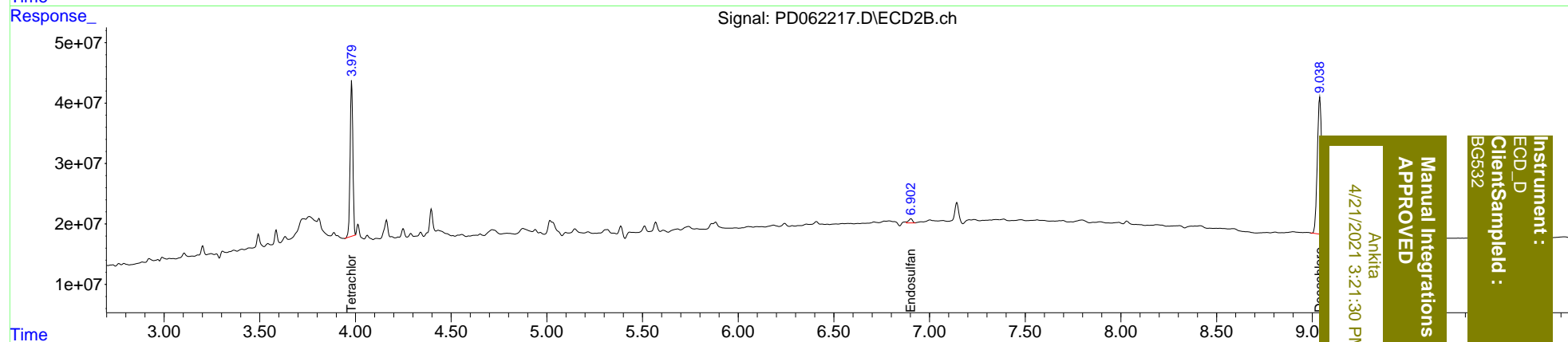
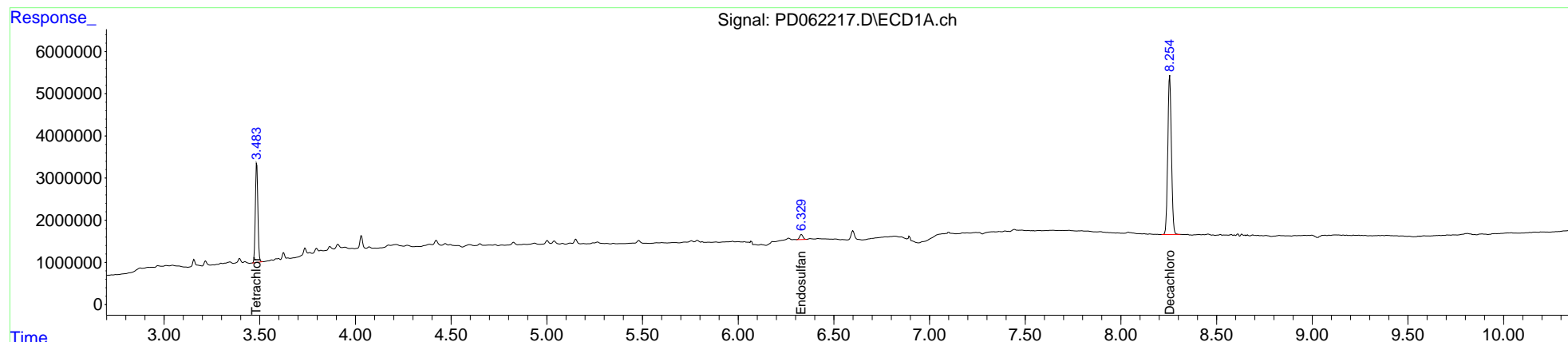
System Monitoring Compounds						
1) SA Tetrachlo...	3.484	3.981	21712086	254.6E6	22.181	25.510
27) SA Decachlor...	8.256	9.040	50215552	376.5E6	37.449	40.896
Target Compounds						
15) B Endosulfa...	6.331	6.902	1433106	9875210	1.280	0.973m

(f)=RT Delta > 1/2 Window (#)=Amounts differ by > 25% (m)=manual int.

Data Path : Z:\pestpcbsrv\HPCHEM1\ECD_D\Data\PD042021\
 Data File : PD062217.D
 Signal(s) : Signal #1: ECD1A.ch Signal #2: ECD2B.ch
 Acq On : 20 Apr 2021 12:55
 Operator : AR\AJ
 Sample : M2031-14
 Misc :
 ALS Vial : 17 Sample Multiplier: 1

Integration File signal 1: autoint1.e
 Integration File signal 2: autoint2.e
 Quant Time: Apr 21 02:15:25 2021
 Quant Method : Z:\pestpcbsrv\HPCHEM1\ECD_D\Method\PD040321CLP.M
 Quant Title : GC Extractables
 QLast Update : Sat Apr 03 05:02:01 2021
 Response via : Initial Calibration
 Integrator: ChemStation

Volume Inj. : 1 µl
 Signal #1 Phase : ZB-MR2 Signal #2 Phase: ZB-MR1
 Signal #1 Info : 30M x 0.32mm x 0.2 Signal #2 Info : 30M x 0.32mm x 0.50µm



Instrument : ECD_D
 Client Sampled : BG532
 Manual Integrations APPROVED
 Ankitia
 4/21/2021 3:21:30 PM