

Data Path : Z:\pestpcbsrv\HPCHEM1\ECD\_D\Data\PD042021\  
 Data File : PD062216.D  
 Signal(s) : Signal #1: ECD1A.ch Signal #2: ECD2B.ch  
 Acq On : 20 Apr 2021 12:41  
 Operator : AR\AJ  
 Sample : M2031-13  
 Misc :  
 ALS Vial : 16 Sample Multiplier: 1

**Instrument :**  
 ECD\_D  
**ClientSampled :**  
 BG531

**Manual Integrations**  
**APPROVED**  
 Ankita  
 4/26/2021 4:00:32 PM

Integration File signal 1: autoint1.e  
 Integration File signal 2: autoint2.e  
 Quant Time: Apr 23 23:49:19 2021  
 Quant Method : Z:\pestpcbsrv\HPCHEM1\ECD\_D\Method\PD040321CLP.M  
 Quant Title : GC Extractables  
 QLast Update : Sat Apr 03 05:02:01 2021  
 Response via : Initial Calibration  
 Integrator: ChemStation

Volume Inj. : 1 µl  
 Signal #1 Phase : ZB-MR2 Signal #2 Phase: ZB-MR1  
 Signal #1 Info : 30M x 0.32mm x0.2 Signal #2 Info : 30M x 0.32mm x 0.50µm

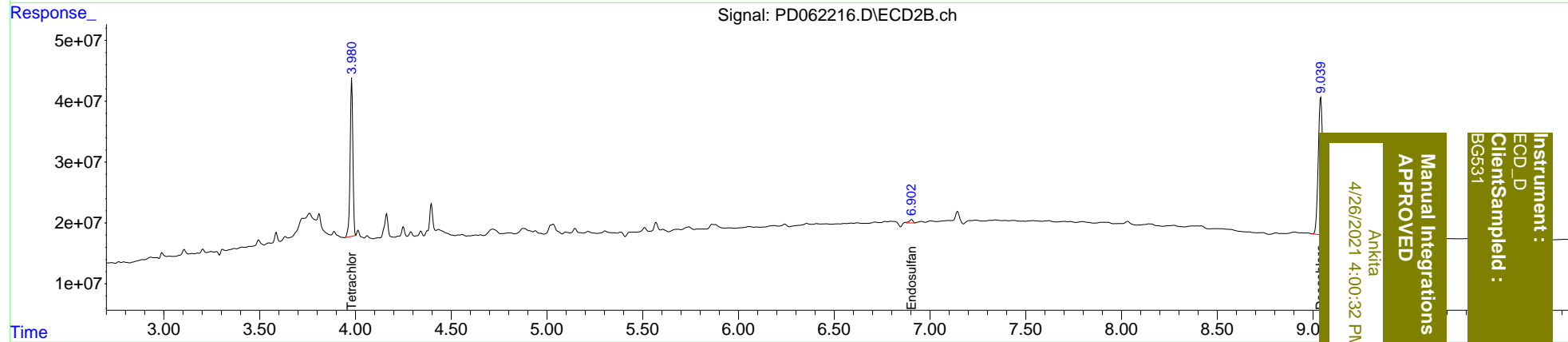
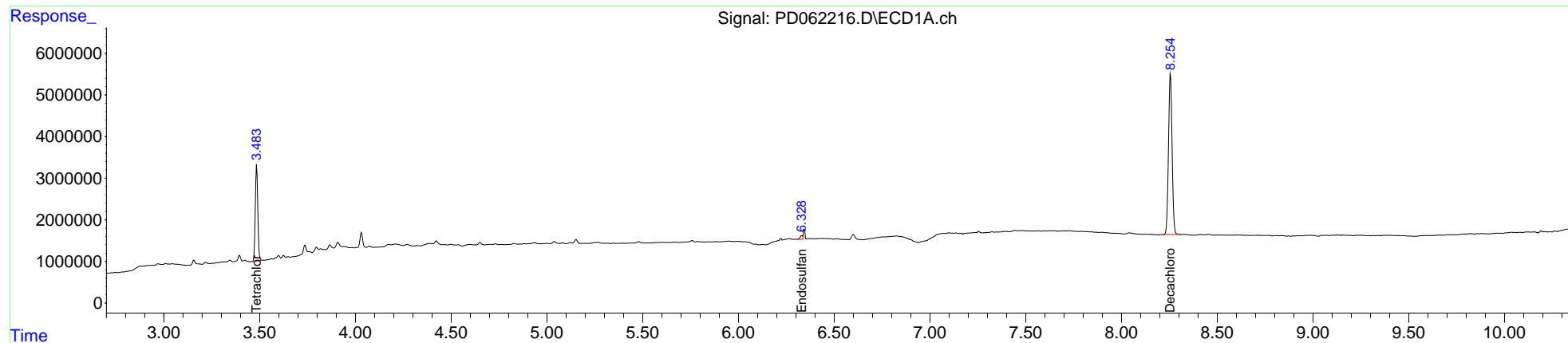
Compound	RT#1	RT#2	Resp#1	Resp#2	ng/ml	ng/ml
-----						
System Monitoring Compounds						
1) SA Tetrachlo...	3.485	3.981	21069768	256.9E6	21.525	25.742
27) SA Decachlor...	8.255	9.040	50552555	378.9E6	37.700	41.165
Target Compounds						
15) B Endosulfa...	6.328	6.902	719906	7638981	0.643m	0.753m
-----						

(f)=RT Delta > 1/2 Window (#)=Amounts differ by > 25% (m)=manual int.

Data Path : Z:\pestpcbsrv\HPCHEM1\ECD\_D\Data\PD042021\  
 Data File : PD062216.D  
 Signal(s) : Signal #1: ECD1A.ch Signal #2: ECD2B.ch  
 Acq On : 20 Apr 2021 12:41  
 Operator : AR\AJ  
 Sample : M2031-13  
 Misc :  
 ALS Vial : 16 Sample Multiplier: 1

Integration File signal 1: autoint1.e  
 Integration File signal 2: autoint2.e  
 Quant Time: Apr 23 23:49:19 2021  
 Quant Method : Z:\pestpcbsrv\HPCHEM1\ECD\_D\Method\PD040321CLP.M  
 Quant Title : GC Extractables  
 QLast Update : Sat Apr 03 05:02:01 2021  
 Response via : Initial Calibration  
 Integrator: ChemStation

Volume Inj. : 1 µl  
 Signal #1 Phase : ZB-MR2 Signal #2 Phase: ZB-MR1  
 Signal #1 Info : 30M x 0.32mm x 0.2 Signal #2 Info : 30M x 0.32mm x 0.50µm



Instrument : ECD\_D  
 Client Sample Id : BG531  
 Manual Integrations APPROVED  
 Ankitia  
 4/26/2021 4:00:32 PM