

Data Path : Z:\pestpcbsrv\HPCHEM1\ECD_D\Data\PD042125\
 Data File : PD088160.D
 Signal(s) : Signal #1: ECD1A.ch Signal #2: ECD2B.ch
 Acq On : 21 Apr 2025 14:06
 Operator : AR\AJ
 Sample : PSTDCCC050
 Misc :
 ALS Vial : 4 Sample Multiplier: 1

Instrument :
 ECD_D
 ClientSampleId :

Integration File signal 1: autoint1.e
 Integration File signal 2: autoint2.e
 Quant Time: Apr 21 22:43:28 2025
 Quant Method : Z:\pestpcbsrv\HPCHEM1\ECD_D\Method\PD041825.M
 Quant Title : GC Extractables
 QLast Update : Sat Apr 19 06:32:27 2025
 Response via : Initial Calibration
 Integrator: ChemStation

Volume Inj. : 1 µl
 Signal #1 Phase : ZB-MR2 Signal #2 Phase: ZB-MR2
 Signal #1 Info : 30M x 0.32mm x0.5 Signal #2 Info : 30M x 0.32mm x 0.25µm

| | Compound | RT#1 | RT#2 | Resp#1 | Resp#2 | ng/ml | ng/ml |
|-----------------------------|-----------------|--------|-------|----------|----------|----------|-----------|
| ----- | | | | | | | |
| System Monitoring Compounds | | | | | | | |
| 1) | SA Tetrachlo... | 3.551 | 2.883 | 98838493 | 692.4E6 | 49.484 | 47.355 |
| 28) | SA Decachlor... | 9.073 | 8.075 | 151.4E6 | 785.1E6 | 45.771 | 42.487 |
| Target Compounds | | | | | | | |
| 2) | A alpha-BHC | 4.000 | 3.395 | 221.5E6 | 1088.5E6 | 51.359 | 47.612 |
| 3) | MA gamma-BHC... | 4.331 | 3.732 | 211.7E6 | 1006.1E6 | 50.566 | 46.713 |
| 4) | MA Heptachlor | 4.931 | 4.086 | 206.8E6 | 1005.4E6 | 51.206 | 46.986 |
| 5) | MB Aldrin | 5.272 | 4.372 | 198.1E6 | 982.4E6 | 50.161 | 47.222 |
| 6) | B beta-BHC | 4.516 | 4.027 | 80635066 | 436.8E6 | 49.671 | 47.201 |
| 7) | B delta-BHC | 4.764 | 4.265 | 208.6E6 | 1006.6E6 | 50.563 | 47.343 |
| 8) | Heptachlo... | 5.692 | 4.876 | 175.4E6 | 881.1E6 | 49.088 | 46.632 |
| 9) | A Endosulfan I | 6.075 | 5.250 | 165.6E6 | 828.3E6 | 49.047 | 45.986 |
| 10) | B gamma-Chl... | 5.947 | 5.129 | 177.4E6 | 942.5E6 | 48.973 | 46.439 |
| 11) | B alpha-Chl... | 6.028 | 5.194 | 176.9E6 | 906.9E6 | 49.021 | 46.264 |
| 12) | B 4,4'-DDE | 6.197 | 5.378 | 158.1E6 | 911.2E6 | 47.930 | 46.270 |
| 13) | MA Dieldrin | 6.348 | 5.516 | 176.5E6 | 922.7E6 | 49.474 | 46.292 |
| 14) | MA Endrin | 6.576 | 5.792 | 146.0E6 | 834.5E6 | 48.936 | 45.844 |
| 15) | B Endosulfa... | 6.787 | 6.083 | 148.5E6 | 798.6E6 | 47.508 | 45.579 |
| 16) | A 4,4'-DDD | 6.706 | 5.933 | 122.4E6 | 751.9E6 | 48.687 | 45.887 |
| 17) | MA 4,4'-DDT | 7.022 | 6.187 | 134.8E6 | 788.4E6 | 48.520 | 46.332 |
| 18) | B Endrin al... | 6.916 | 6.261 | 108.3E6 | 587.3E6 | 46.919 | 44.158 |
| 19) | B Endosulfa... | 7.149 | 6.485 | 138.2E6 | 774.3E6 | 48.063 | 45.196 |
| 20) | A Methoxychlor | 7.493 | 6.758 | 71198716 | 406.6E6 | 47.480 | 44.577 |
| 21) | B Endrin ke... | 7.631 | 6.994 | 148.5E6 | 834.5E6 | 48.108 | 44.616 |
| 22) | Mirex | 8.114 | 7.188 | 110.0E6 | 651.4E6 | 46.843 | 43.949 |
| 24) | Chlordane-2 | 5.272f | 4.510 | 198.1E6 | 19954166 | 1189.672 | 24.178 # |
| 25) | Chlordane-3 | 5.947 | 5.129 | 177.4E6 | 942.5E6 | 262.970 | 372.680 # |
| 26) | Chlordane-4 | 6.028 | 5.194 | 176.9E6 | 906.9E6 | 217.025 | 424.151 # |
| 27) | Chlordane-5 | 0.000 | 6.083 | 0 | 798.6E6 | N.D. | 827.140 # |

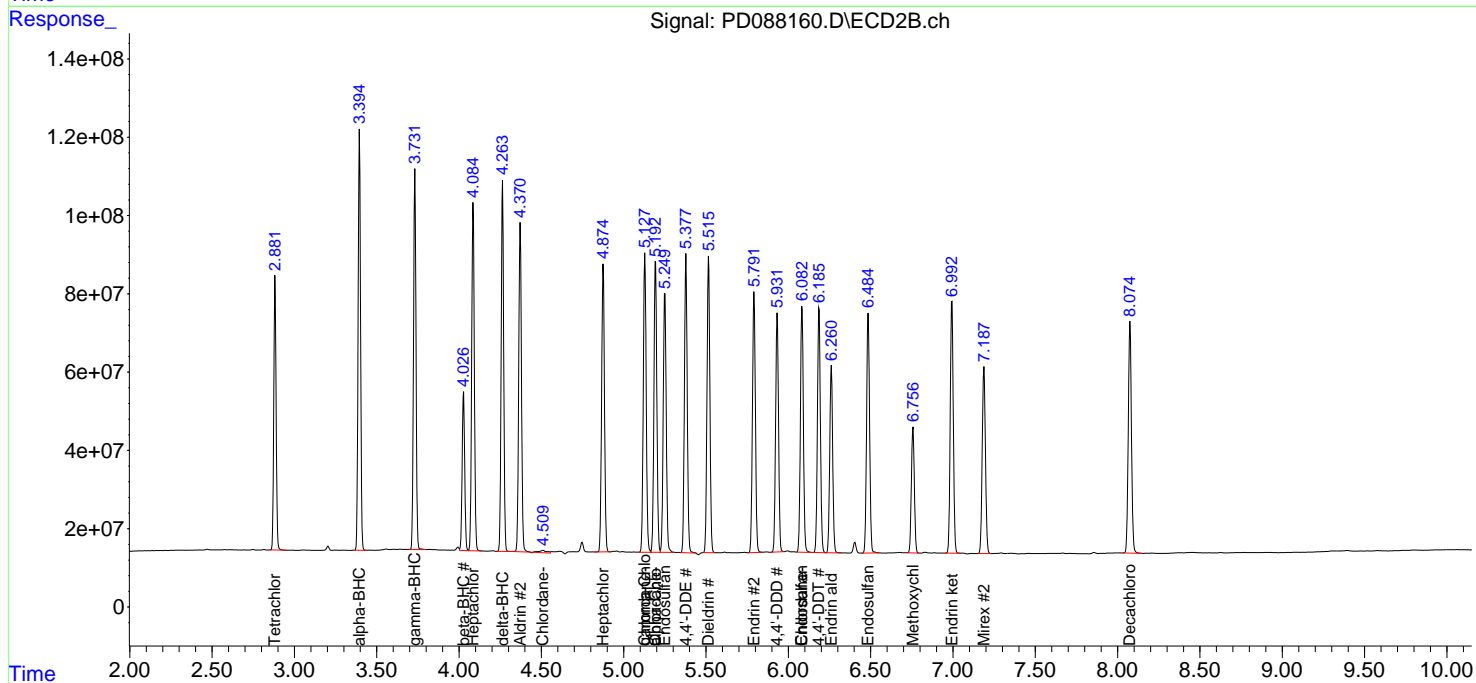
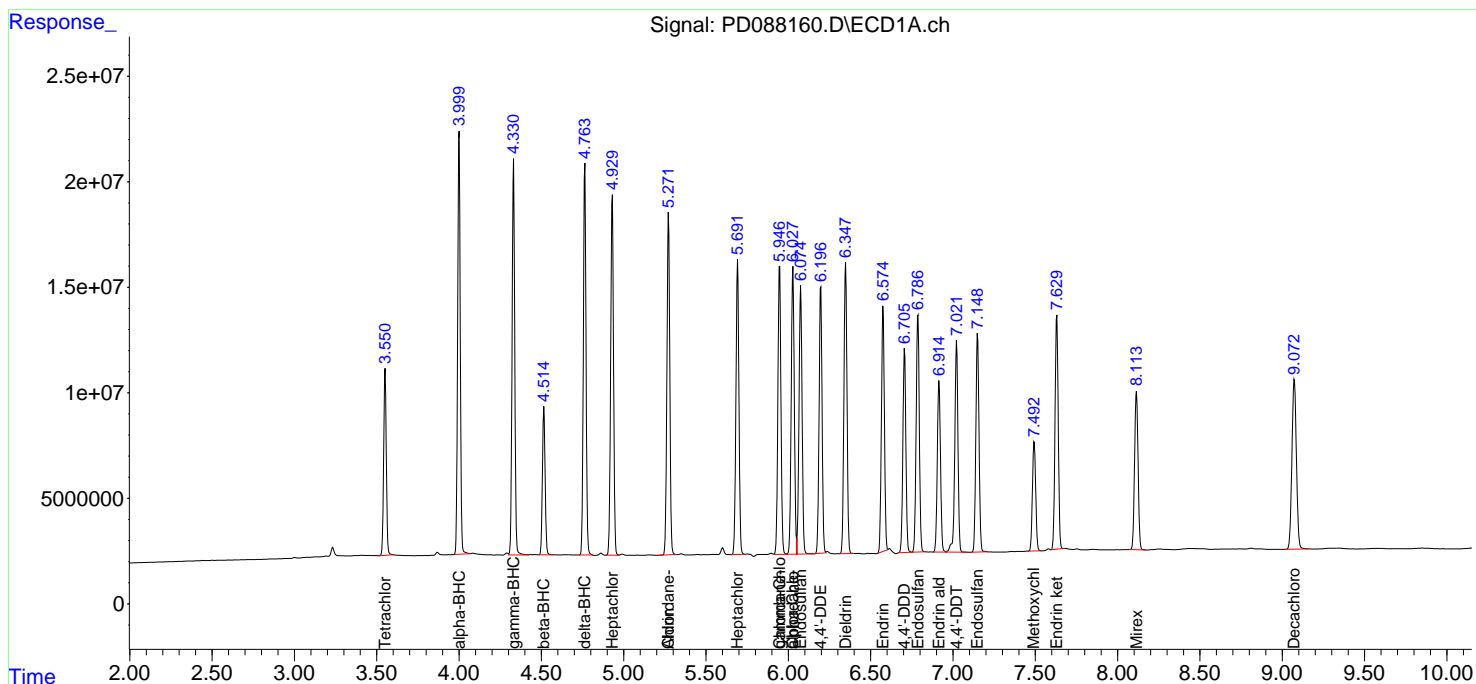
(f)=RT Delta > 1/2 Window (#)=Amounts differ by > 25% (m)=manual int.

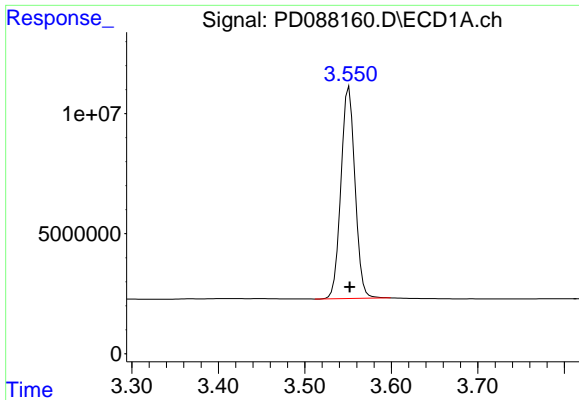
Data Path : Z:\pestpcbsrv\HPCHEM1\ECD_D\Data\PD042125\
 Data File : PD088160.D
 Signal(s) : Signal #1: ECD1A.ch Signal #2: ECD2B.ch
 Acq On : 21 Apr 2025 14:06
 Operator : AR\AJ
 Sample : PSTDCCC050
 Misc :
 ALS Vial : 4 Sample Multiplier: 1

Instrument :
 ECD_D
 ClientSampleId :

Integration File signal 1: autoint1.e
 Integration File signal 2: autoint2.e
 Quant Time: Apr 21 22:43:28 2025
 Quant Method : Z:\pestpcbsrv\HPCHEM1\ECD_D\Method\PD041825.M
 Quant Title : GC Extractables
 QLast Update : Sat Apr 19 06:32:27 2025
 Response via : Initial Calibration
 Integrator: ChemStation

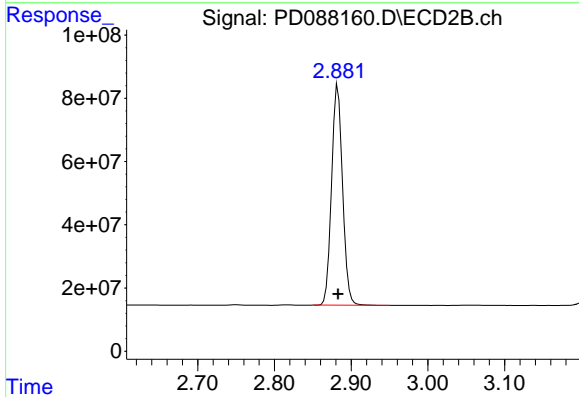
Volume Inj. : 1 µl
 Signal #1 Phase : ZB-MR1 Signal #2 Phase: ZB-MR2
 Signal #1 Info : 30M x 0.32mm x0.5 Signal #2 Info : 30M x 0.32mm x 0.25µm



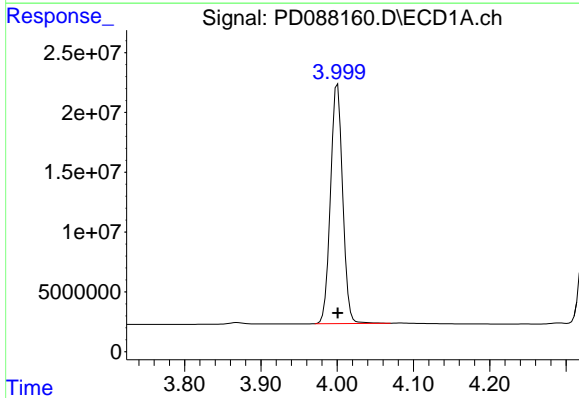


#1 Tetrachloro-m-xylene
 R.T.: 3.551 min
 Delta R.T.: 0.000 min
 Response: 98838493
 Conc: 49.48 ng/ml

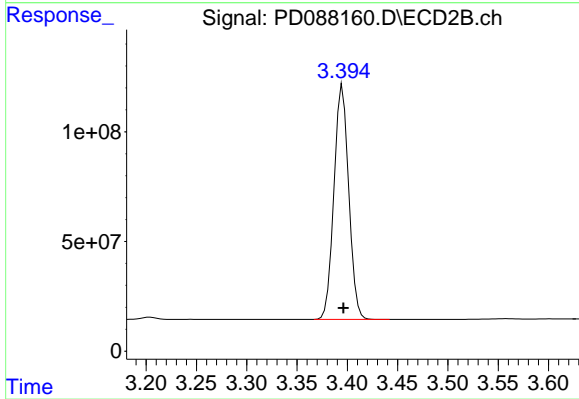
Instrument :
 ECD_D
 ClientSampleId :



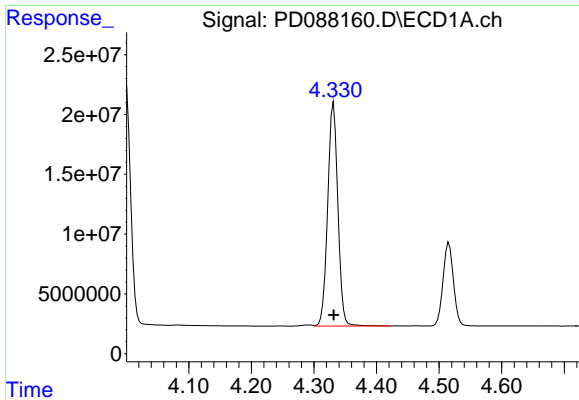
#1 Tetrachloro-m-xylene
 R.T.: 2.883 min
 Delta R.T.: 0.000 min
 Response: 692409829
 Conc: 47.36 ng/ml



#2 alpha-BHC
 R.T.: 4.000 min
 Delta R.T.: 0.000 min
 Response: 221459675
 Conc: 51.36 ng/ml

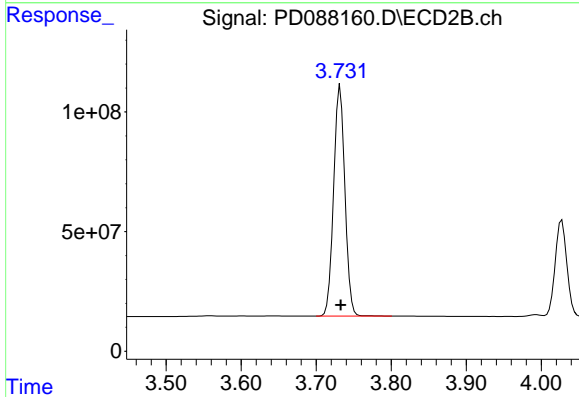


#2 alpha-BHC
 R.T.: 3.395 min
 Delta R.T.: 0.000 min
 Response: 1088472349
 Conc: 47.61 ng/ml

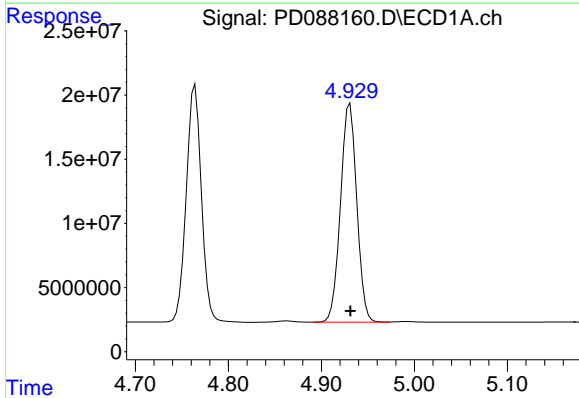


#3 gamma-BHC (Lindane)
 R.T.: 4.331 min
 Delta R.T.: 0.000 min
 Response: 211746471
 Conc: 50.57 ng/ml

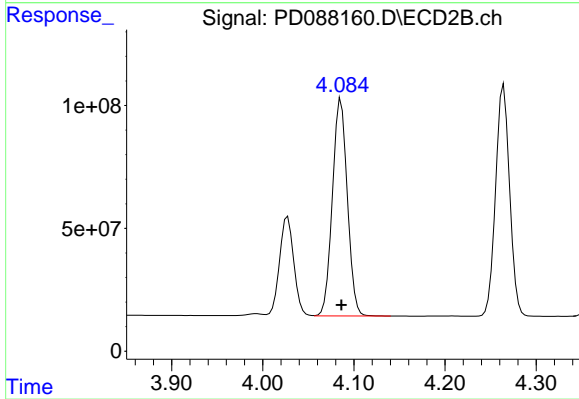
Instrument :
 ECD_D
 ClientSampleId :



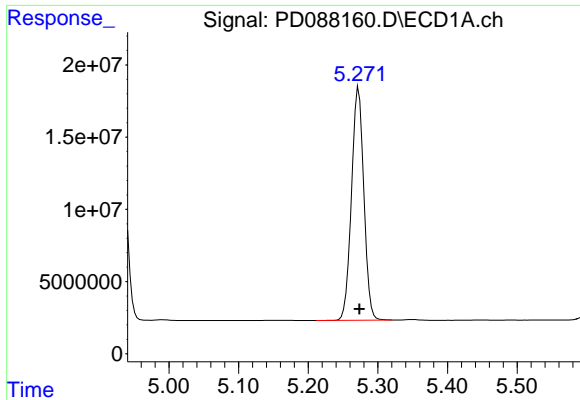
#3 gamma-BHC (Lindane)
 R.T.: 3.732 min
 Delta R.T.: 0.000 min
 Response: 1006144594
 Conc: 46.71 ng/ml



#4 Heptachlor
 R.T.: 4.931 min
 Delta R.T.: 0.000 min
 Response: 206818810
 Conc: 51.21 ng/ml

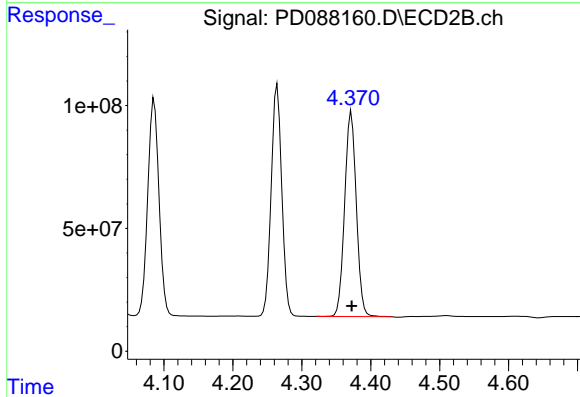


#4 Heptachlor
 R.T.: 4.086 min
 Delta R.T.: 0.000 min
 Response: 1005422707
 Conc: 46.99 ng/ml

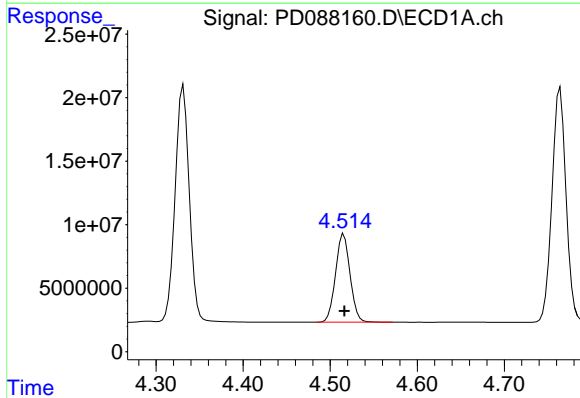


#5 Aldrin
 R.T.: 5.272 min
 Delta R.T.: 0.000 min
 Response: 198114663
 Conc: 50.16 ng/ml

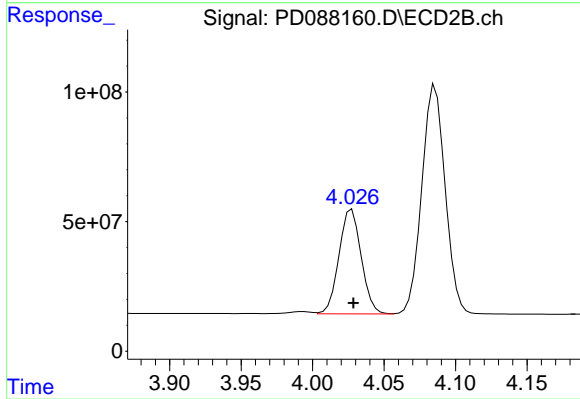
Instrument :
 ECD_D
 ClientSampleId :



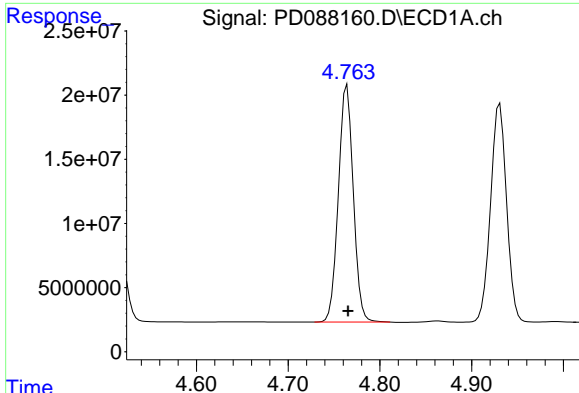
#5 Aldrin
 R.T.: 4.372 min
 Delta R.T.: 0.000 min
 Response: 982356076
 Conc: 47.22 ng/ml



#6 beta-BHC
 R.T.: 4.516 min
 Delta R.T.: 0.000 min
 Response: 80635066
 Conc: 49.67 ng/ml

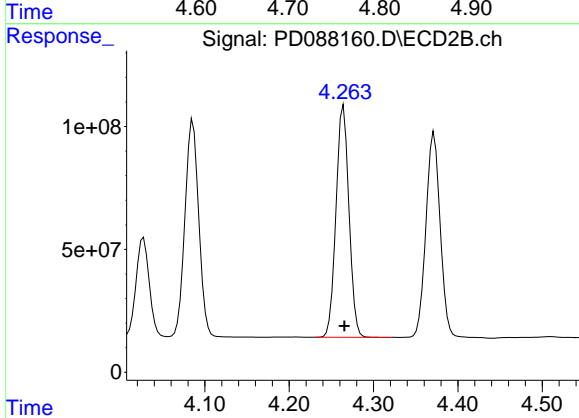


#6 beta-BHC
 R.T.: 4.027 min
 Delta R.T.: 0.000 min
 Response: 436805616
 Conc: 47.20 ng/ml

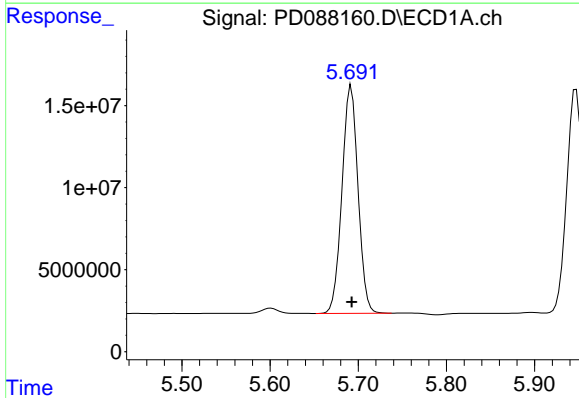


#7 delta-BHC
R.T.: 4.764 min
Delta R.T.: 0.000 min
Response: 208569187
Conc: 50.56 ng/ml

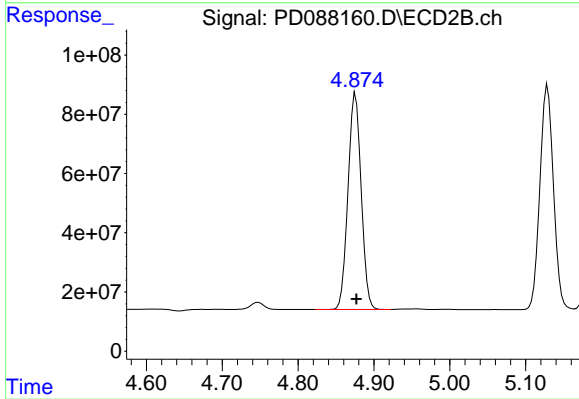
Instrument :
ECD_D
ClientSampleId :



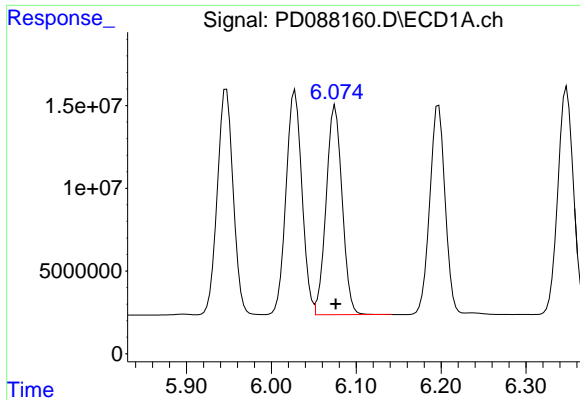
#7 delta-BHC
R.T.: 4.265 min
Delta R.T.: 0.000 min
Response: 1006581923
Conc: 47.34 ng/ml



#8 Heptachlor epoxide
R.T.: 5.692 min
Delta R.T.: 0.000 min
Response: 175438070
Conc: 49.09 ng/ml



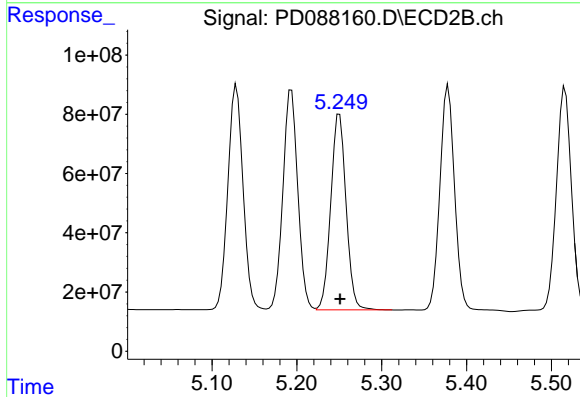
#8 Heptachlor epoxide
R.T.: 4.876 min
Delta R.T.: 0.000 min
Response: 881080233
Conc: 46.63 ng/ml



#9 Endosulfan I

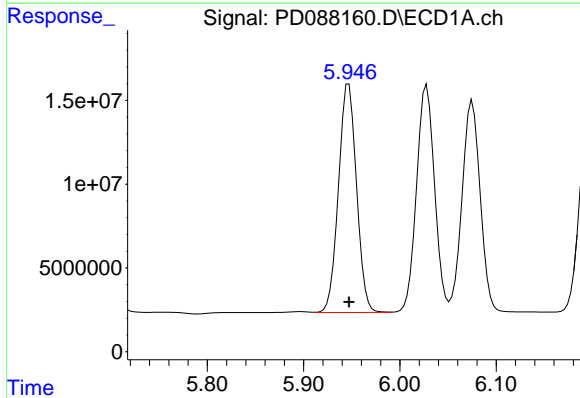
R.T.: 6.075 min
 Delta R.T.: 0.000 min
 Response: 165640217
 Conc: 49.05 ng/ml

Instrument :
 ECD_D
 ClientSampleId :



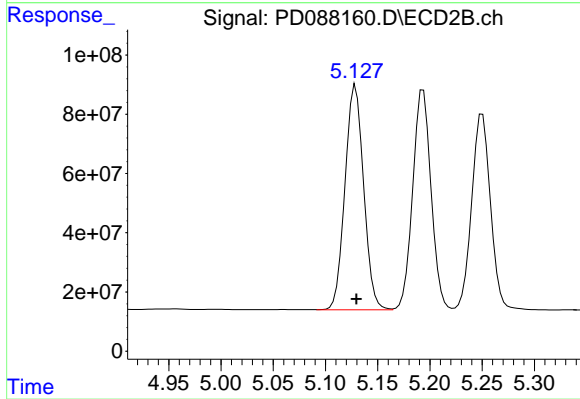
#9 Endosulfan I

R.T.: 5.250 min
 Delta R.T.: 0.000 min
 Response: 828329403
 Conc: 45.99 ng/ml



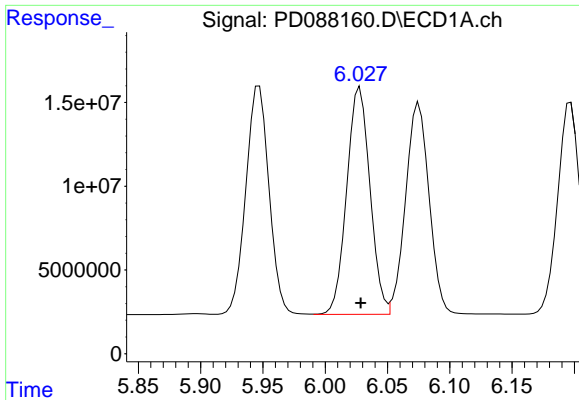
#10 gamma-Chlordane

R.T.: 5.947 min
 Delta R.T.: 0.000 min
 Response: 177381191
 Conc: 48.97 ng/ml



#10 gamma-Chlordane

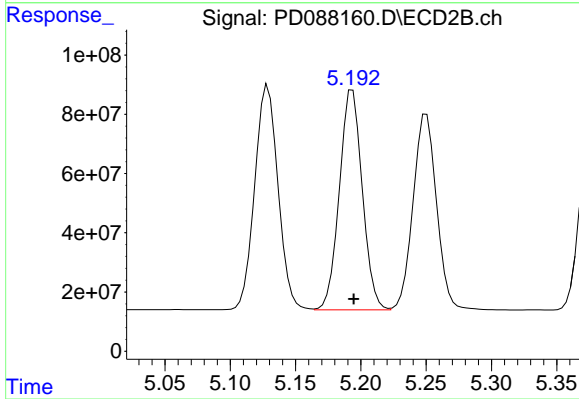
R.T.: 5.129 min
 Delta R.T.: 0.000 min
 Response: 942522382
 Conc: 46.44 ng/ml



#11 alpha-Chlordane

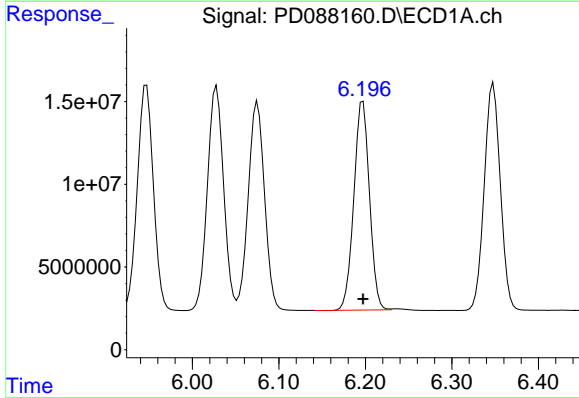
R.T.: 6.028 min
 Delta R.T.: 0.000 min
 Response: 176945832
 Conc: 49.02 ng/ml

Instrument :
 ECD_D
 ClientSampleId :



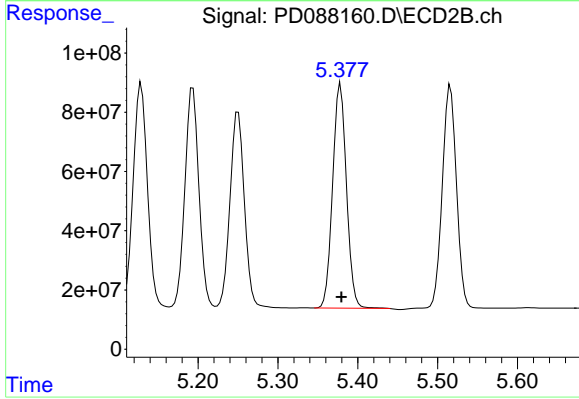
#11 alpha-Chlordane

R.T.: 5.194 min
 Delta R.T.: 0.000 min
 Response: 906900723
 Conc: 46.26 ng/ml



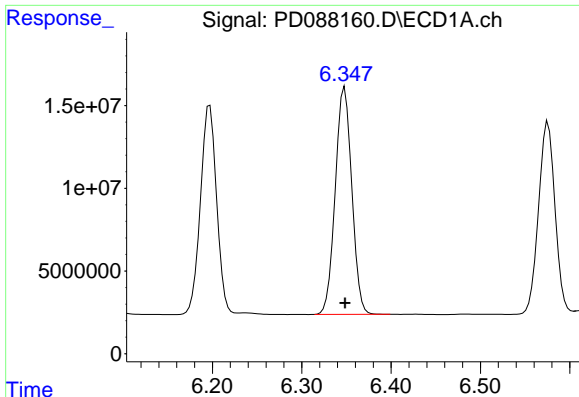
#12 4,4'-DDE

R.T.: 6.197 min
 Delta R.T.: 0.000 min
 Response: 158085270
 Conc: 47.93 ng/ml



#12 4,4'-DDE

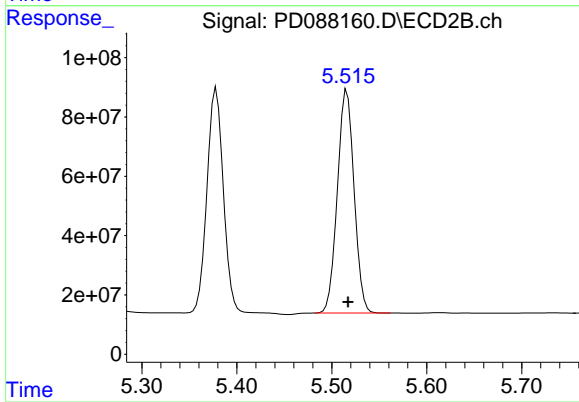
R.T.: 5.378 min
 Delta R.T.: -0.001 min
 Response: 911249688
 Conc: 46.27 ng/ml



#13 Dieldrin

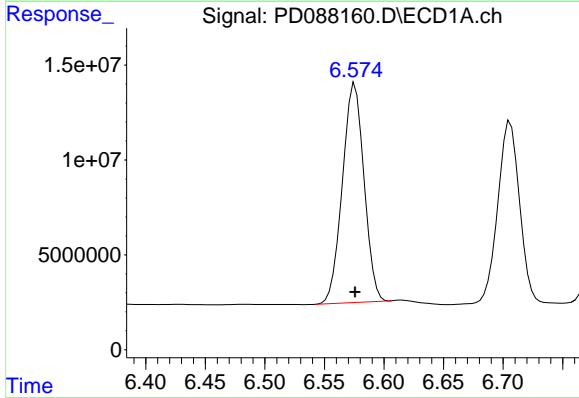
R.T.: 6.348 min
 Delta R.T.: 0.000 min
 Response: 176549032
 Conc: 49.47 ng/ml

Instrument :
 ECD_D
 ClientSampleId :



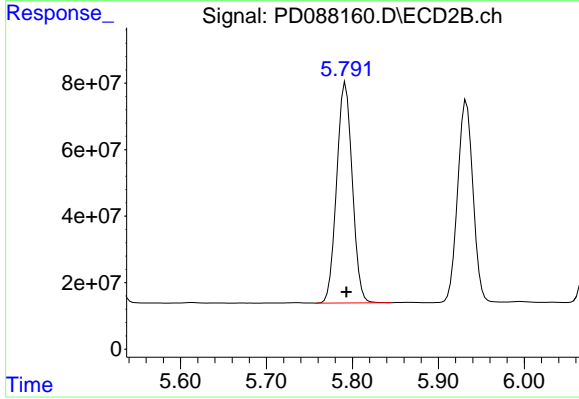
#13 Dieldrin

R.T.: 5.516 min
 Delta R.T.: 0.000 min
 Response: 922728015
 Conc: 46.29 ng/ml



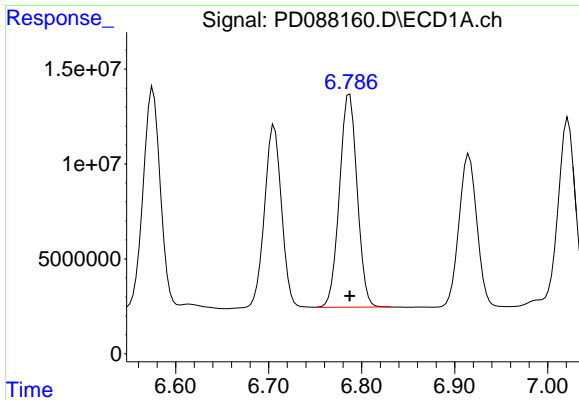
#14 Endrin

R.T.: 6.576 min
 Delta R.T.: 0.000 min
 Response: 145954209
 Conc: 48.94 ng/ml



#14 Endrin

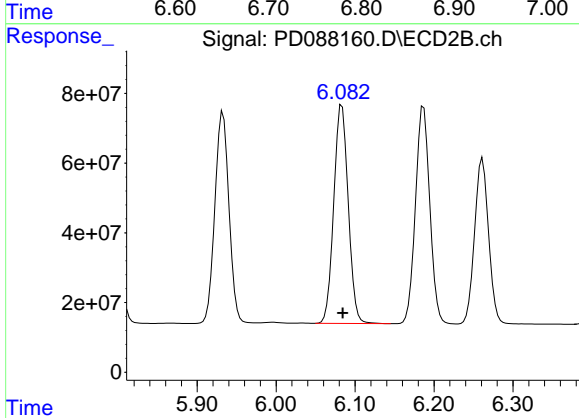
R.T.: 5.792 min
 Delta R.T.: 0.000 min
 Response: 834461683
 Conc: 45.84 ng/ml



#15 Endosulfan II

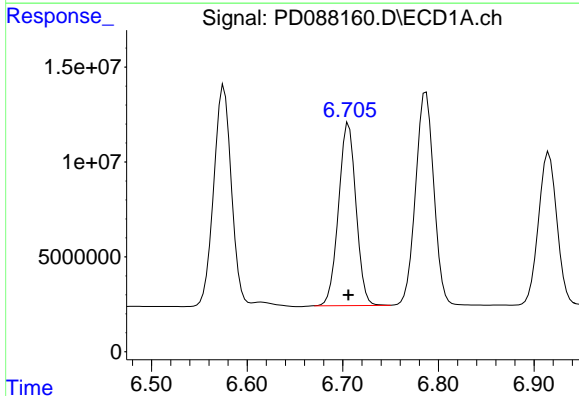
R.T.: 6.787 min
Delta R.T.: 0.000 min
Response: 148518651
Conc: 47.51 ng/ml

Instrument :
ECD_D
ClientSampleId :



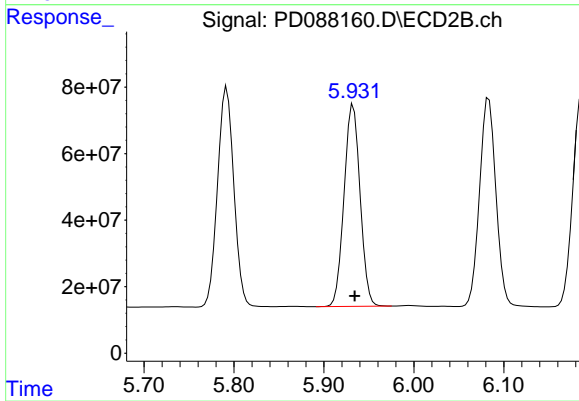
#15 Endosulfan II

R.T.: 6.083 min
Delta R.T.: -0.001 min
Response: 798624269
Conc: 45.58 ng/ml



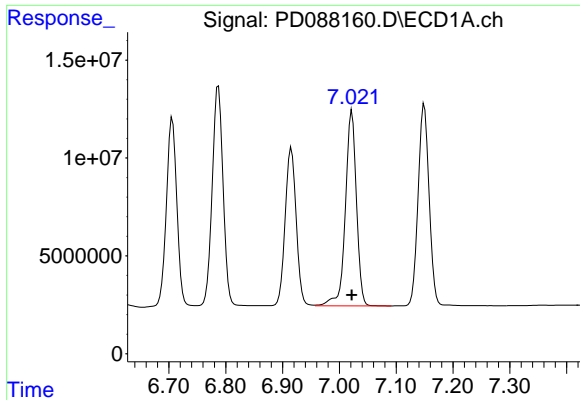
#16 4,4'-DDD

R.T.: 6.706 min
Delta R.T.: 0.000 min
Response: 122446325
Conc: 48.69 ng/ml



#16 4,4'-DDD

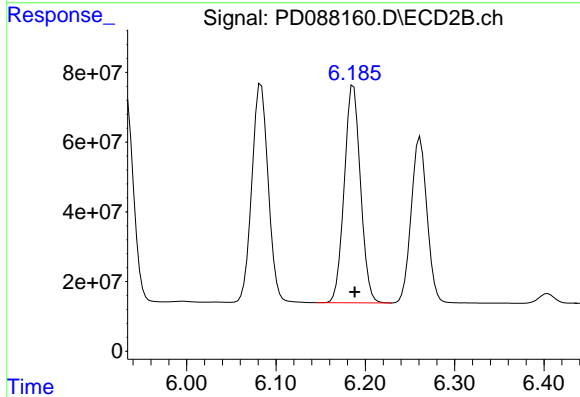
R.T.: 5.933 min
Delta R.T.: -0.001 min
Response: 751915358
Conc: 45.89 ng/ml



#17 4,4'-DDT

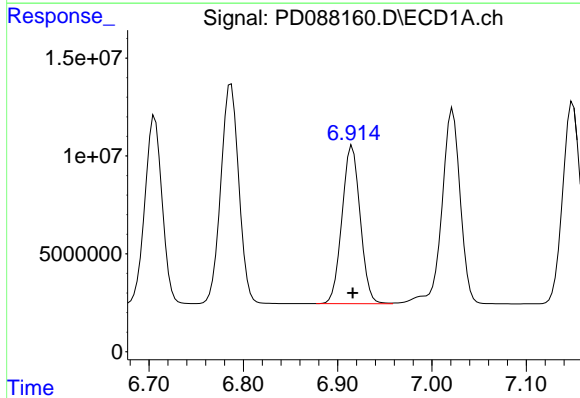
R.T.: 7.022 min
 Delta R.T.: 0.000 min
 Response: 134764911
 Conc: 48.52 ng/ml

Instrument :
 ECD_D
 ClientSampleId :



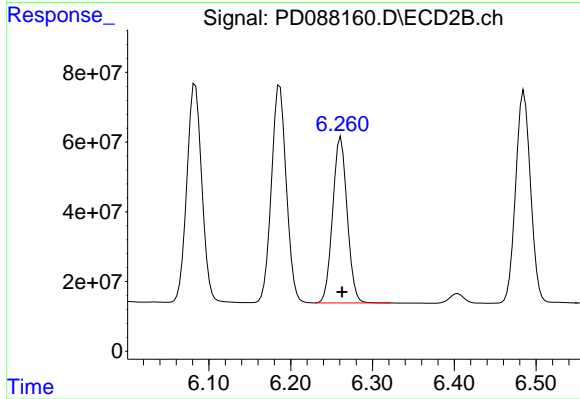
#17 4,4'-DDT

R.T.: 6.187 min
 Delta R.T.: -0.001 min
 Response: 788413313
 Conc: 46.33 ng/ml



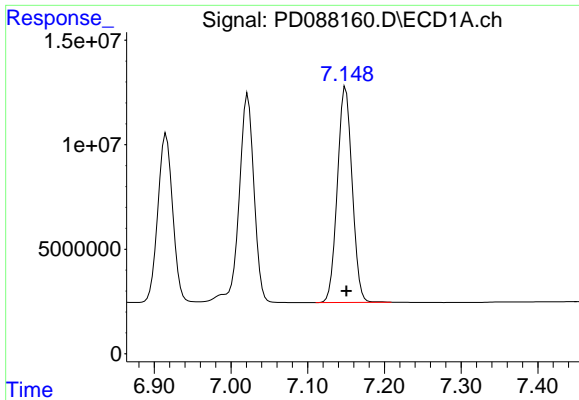
#18 Endrin aldehyde

R.T.: 6.916 min
 Delta R.T.: 0.000 min
 Response: 108288940
 Conc: 46.92 ng/ml



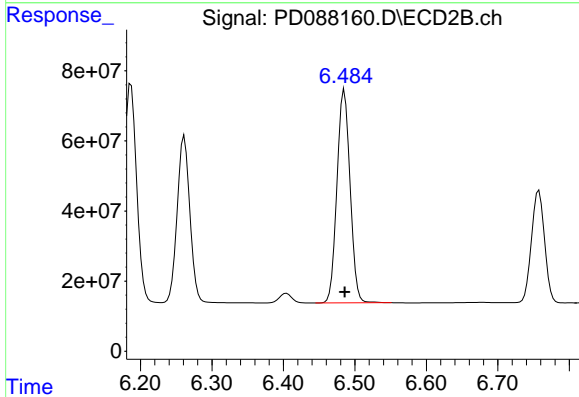
#18 Endrin aldehyde

R.T.: 6.261 min
 Delta R.T.: -0.001 min
 Response: 587349108
 Conc: 44.16 ng/ml

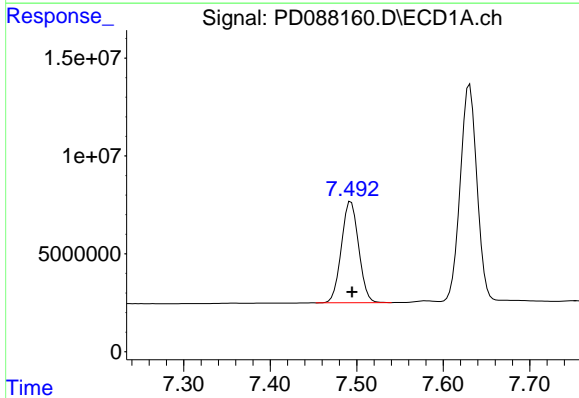


#19 Endosulfan Sulfate
 R.T.: 7.149 min
 Delta R.T.: 0.000 min
 Response: 138221143
 Conc: 48.06 ng/ml

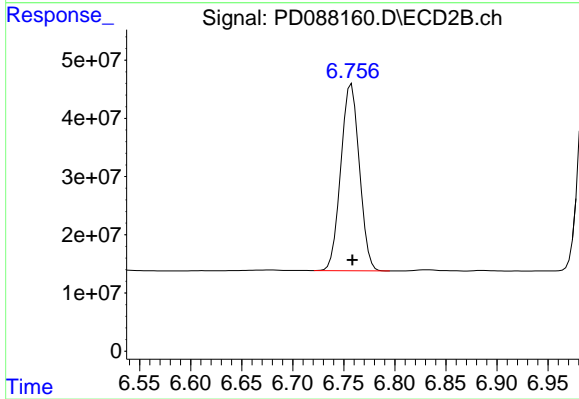
Instrument :
 ECD_D
 ClientSampleId :



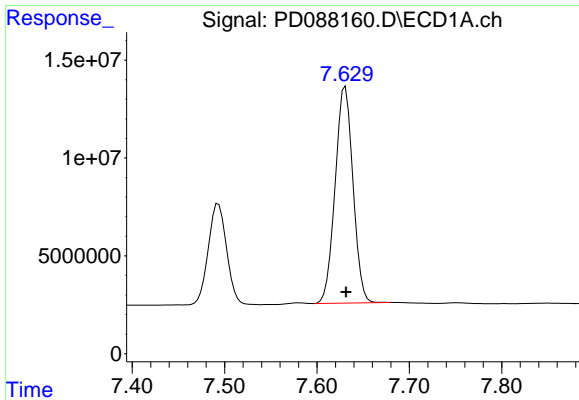
#19 Endosulfan Sulfate
 R.T.: 6.485 min
 Delta R.T.: 0.000 min
 Response: 774349721
 Conc: 45.20 ng/ml



#20 Methoxychlor
 R.T.: 7.493 min
 Delta R.T.: -0.001 min
 Response: 71198716
 Conc: 47.48 ng/ml



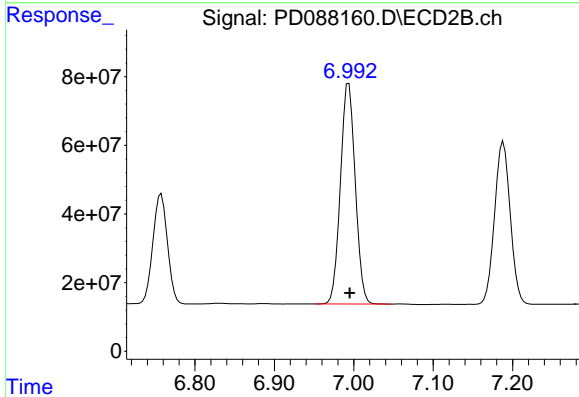
#20 Methoxychlor
 R.T.: 6.758 min
 Delta R.T.: -0.001 min
 Response: 406590910
 Conc: 44.58 ng/ml



#21 Endrin ketone

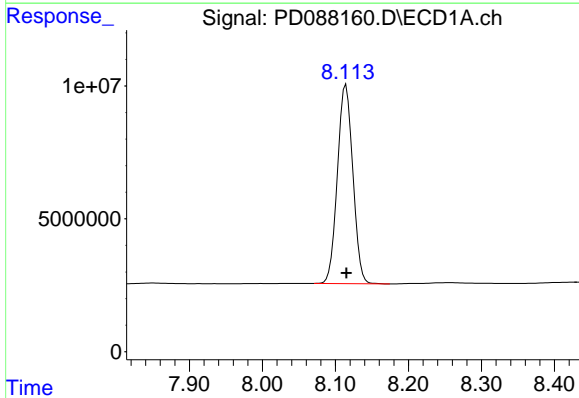
R.T.: 7.631 min
 Delta R.T.: 0.000 min
 Response: 148488442
 Conc: 48.11 ng/ml

Instrument :
 ECD_D
 ClientSampleId :



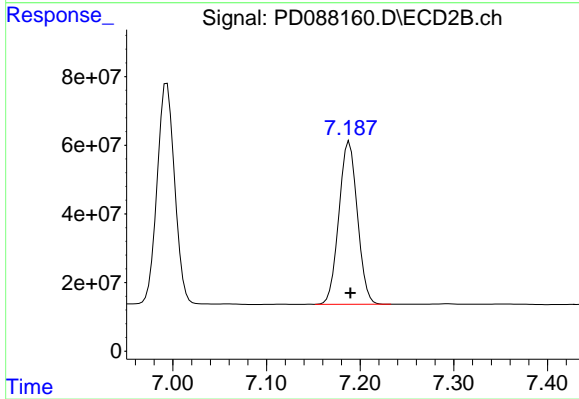
#21 Endrin ketone

R.T.: 6.994 min
 Delta R.T.: -0.001 min
 Response: 834490716
 Conc: 44.62 ng/ml



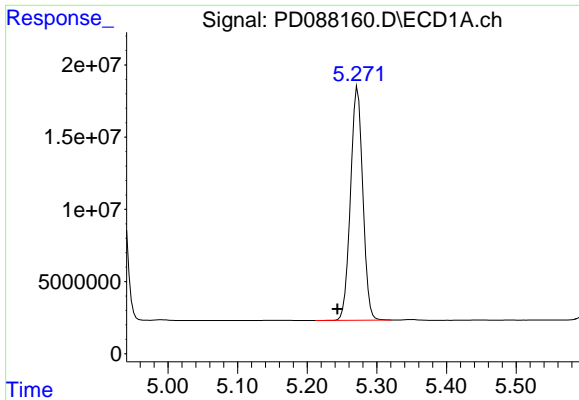
#22 Mirex

R.T.: 8.114 min
 Delta R.T.: 0.000 min
 Response: 110002181
 Conc: 46.84 ng/ml



#22 Mirex

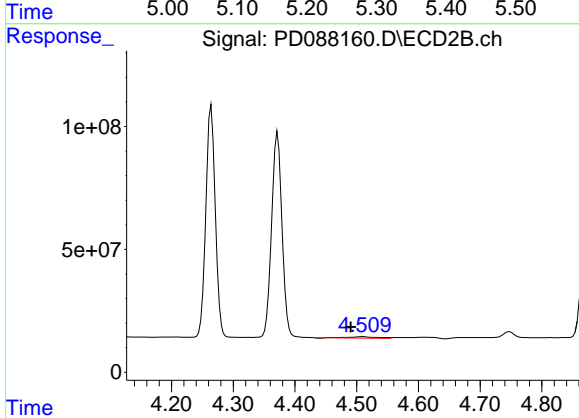
R.T.: 7.188 min
 Delta R.T.: -0.001 min
 Response: 651371050
 Conc: 43.95 ng/ml



#24 Chlordane-2

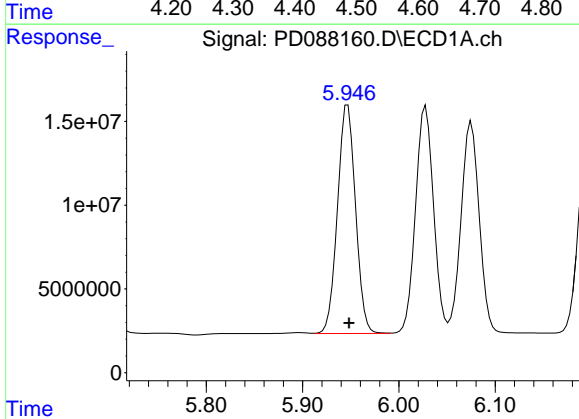
R.T.: 5.272 min
Delta R.T.: 0.029 min
Response: 198114663
Conc: 1189.67 ng/ml

Instrument :
ECD_D
ClientSampleId :



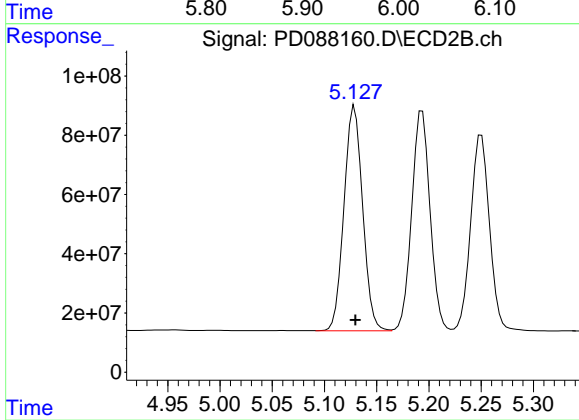
#24 Chlordane-2

R.T.: 4.510 min
Delta R.T.: 0.020 min
Response: 19954166
Conc: 24.18 ng/ml



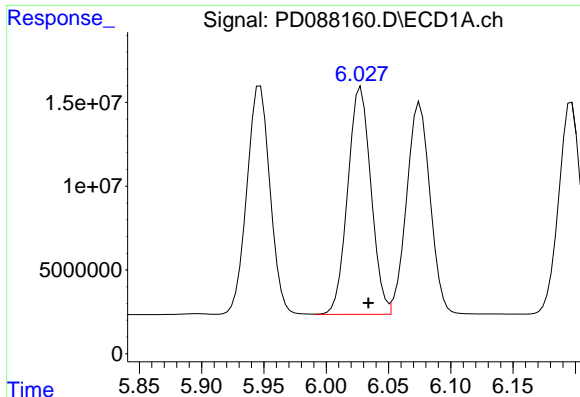
#25 Chlordane-3

R.T.: 5.947 min
Delta R.T.: -0.001 min
Response: 177381191
Conc: 262.97 ng/ml



#25 Chlordane-3

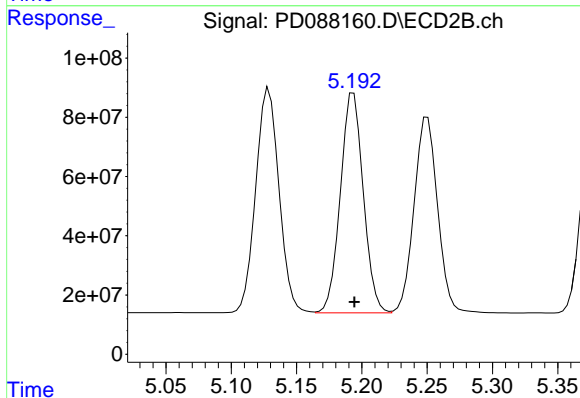
R.T.: 5.129 min
Delta R.T.: 0.000 min
Response: 942522382
Conc: 372.68 ng/ml



#26 Chlordane-4

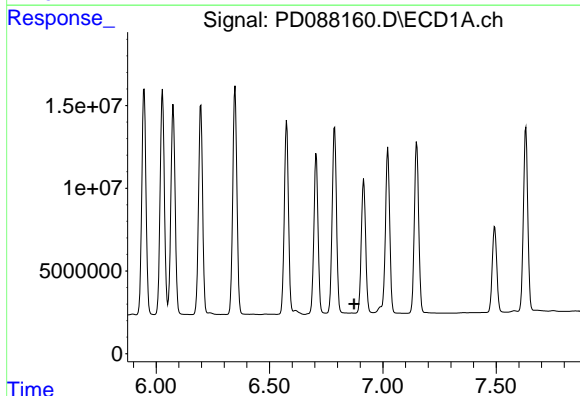
R.T.: 6.028 min
 Delta R.T.: -0.006 min
 Response: 176945832
 Conc: 217.02 ng/ml

Instrument :
 ECD_D
 ClientSampleId :



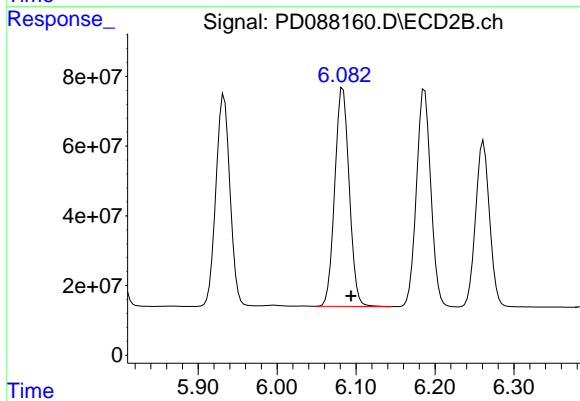
#26 Chlordane-4

R.T.: 5.194 min
 Delta R.T.: 0.000 min
 Response: 906900723
 Conc: 424.15 ng/ml



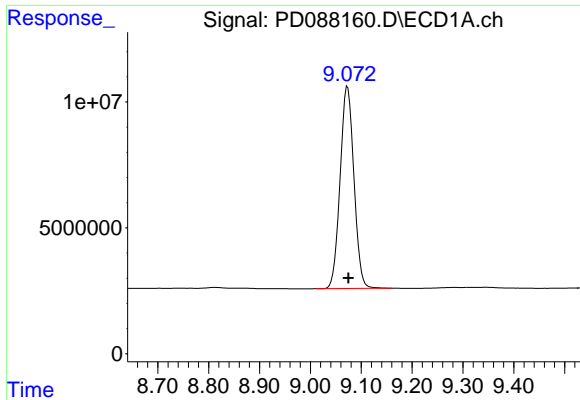
#27 Chlordane-5

R.T.: 0.000 min
 Exp R.T. : 6.873 min
 Response: 0
 Conc: N.D.



#27 Chlordane-5

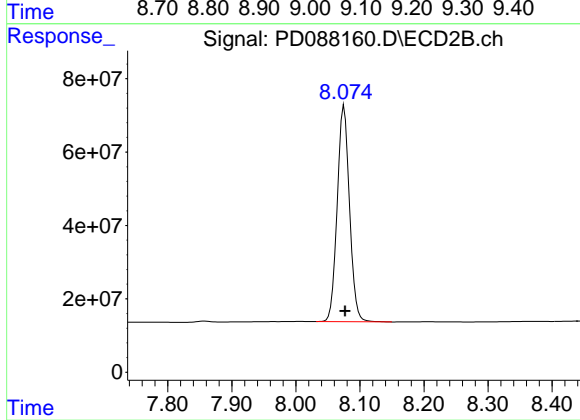
R.T.: 6.083 min
 Delta R.T.: -0.010 min
 Response: 798624269
 Conc: 827.14 ng/ml



#28 Decachlorobiphenyl

R.T.: 9.073 min
Delta R.T.: -0.002 min
Response: 151416451
Conc: 45.77 ng/ml

Instrument :
ECD_D
ClientSampleId :



#28 Decachlorobiphenyl

R.T.: 8.075 min
Delta R.T.: -0.002 min
Response: 785136967
Conc: 42.49 ng/ml