

Data Path : Z:\pestpcbsrv\HPCHEM1\ECD_D\Data\PD042125\
 Data File : PD088152.D
 Signal(s) : Signal #1: ECD1A.ch Signal #2: ECD2B.ch
 Acq On : 21 Apr 2025 11:23
 Operator : AR\AJ
 Sample : PB167650BS
 Misc :
 ALS Vial : 8 Sample Multiplier: 1

Instrument :
 ECD_D
 ClientSampleId :
 PB167650BS

Integration File signal 1: autoint1.e
 Integration File signal 2: autoint2.e
 Quant Time: Apr 21 22:41:48 2025
 Quant Method : Z:\pestpcbsrv\HPCHEM1\ECD_D\Method\PD041825.M
 Quant Title : GC Extractables
 QLast Update : Sat Apr 19 06:32:27 2025
 Response via : Initial Calibration
 Integrator: ChemStation

Volume Inj. : 1 µl
 Signal #1 Phase : ZB-MR2 Signal #2 Phase: ZB-MR2
 Signal #1 Info : 30M x 0.32mm x0.5 Signal #2 Info : 30M x 0.32mm x 0.25µm

Compound	RT#1	RT#2	Resp#1	Resp#2	ng/ml	ng/ml

System Monitoring Compounds						
1) SA Tetrachlo...	3.551	2.882	36774940	279.4E6	18.411	19.109
28) SA Decachlor...	9.074	8.076	67361875	357.1E6	20.363	19.323
Target Compounds						
2) A alpha-BHC	4.001	3.395	205.8E6	1036.9E6	47.721	45.357
3) MA gamma-BHC...	4.331	3.731	198.6E6	966.6E6	47.416	44.877
4) MA Heptachlor	4.931	4.085	196.5E6	963.8E6	48.650	45.042
5) MB Aldrin	5.273	4.372	189.1E6	945.5E6	47.868	45.450
6) B beta-BHC	4.516	4.027	76154281	429.6E6	46.911	46.421
7) B delta-BHC	4.765	4.264	205.6E6	969.0E6	49.847	45.575
8) B Heptachlo...	5.692	4.875	171.6E6	858.1E6	48.015	45.418
9) A Endosulfan I	6.076	5.250	162.8E6	819.6E6	48.212	45.504
10) B gamma-Chl...	5.947	5.129	172.7E6	923.2E6	47.684	45.485
11) B alpha-Chl...	6.028	5.193	172.7E6	889.1E6	47.848	45.354
12) B 4,4'-DDE	6.197	5.378	156.7E6	888.4E6	47.519	45.110
13) MA Dieldrin	6.348	5.516	174.1E6	904.2E6	48.800	45.361
14) MA Endrin	6.575	5.792	144.9E6	814.7E6	48.580	44.757
15) B Endosulfa...	6.786	6.083	148.1E6	760.6E6	47.358	43.407
16) A 4,4'-DDD	6.706	5.932	121.4E6	726.1E6	48.264	44.309
17) MA 4,4'-DDT	7.022	6.186	137.8E6	769.8E6	49.602	45.241
18) B Endrin al...	6.916	6.261	113.4E6	604.0E6	49.123	45.408
19) B Endosulfa...	7.150	6.484	139.2E6	761.7E6	48.397	44.457
20) A Methoxychlor	7.494	6.757	72010530	399.6E6	48.022	43.807
21) B Endrin ke...	7.631	6.993	149.2E6	833.0E6	48.352	44.534
22) Mirex	8.115	7.188	110.2E6	645.6E6	46.926	43.561

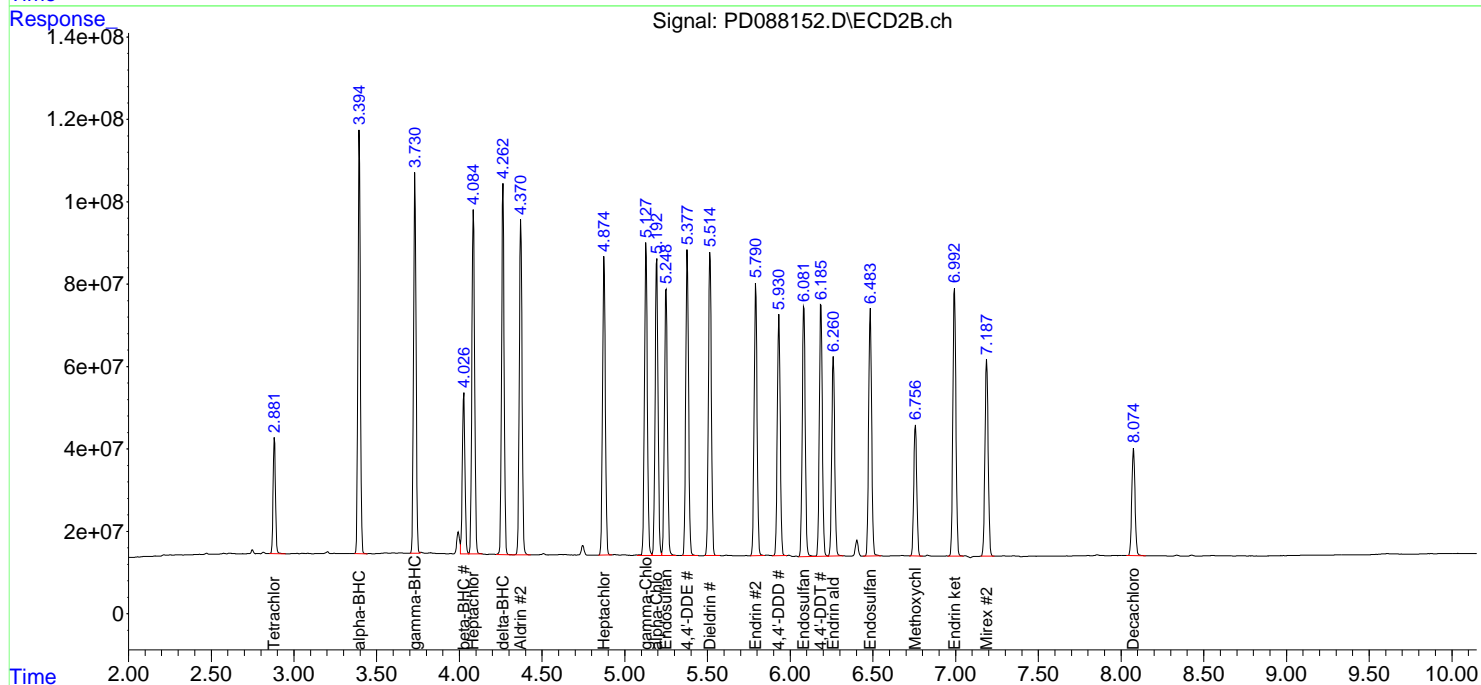
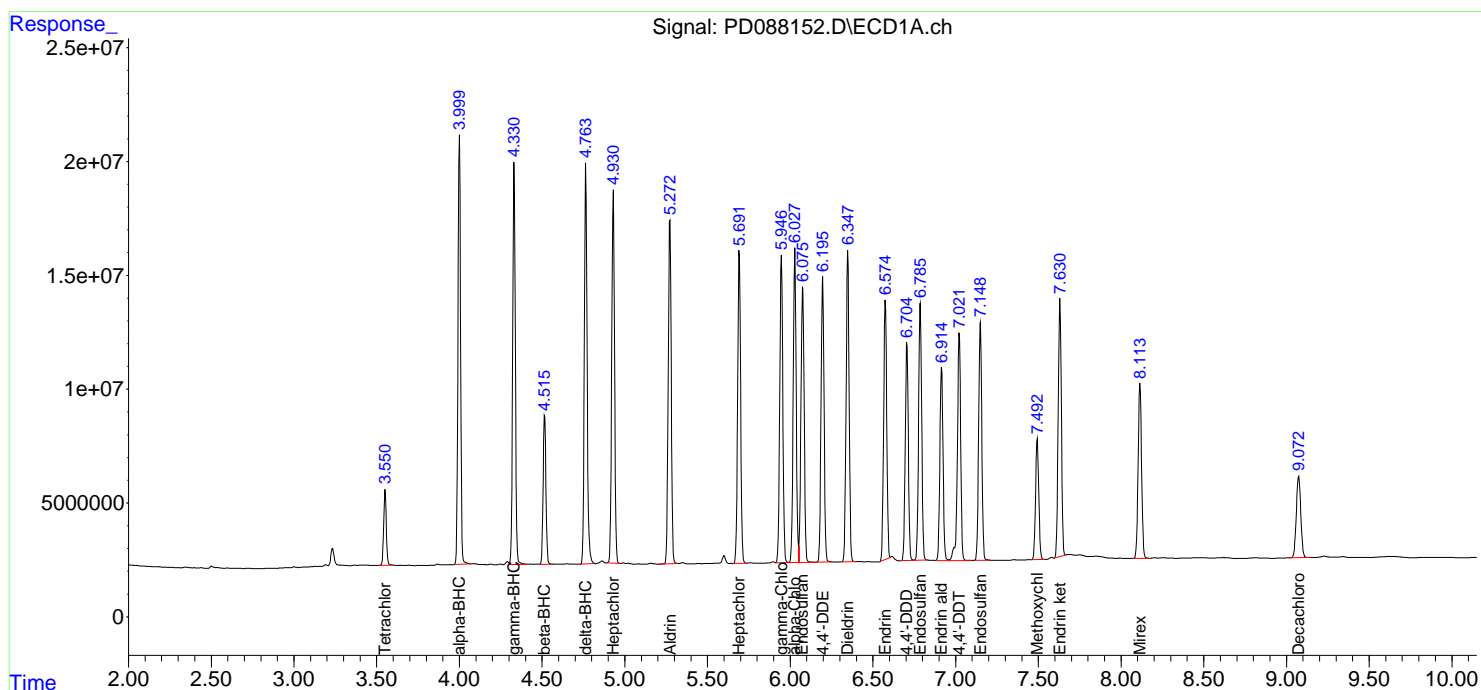
(f)=RT Delta > 1/2 Window (#)=Amounts differ by > 25% (m)=manual int.

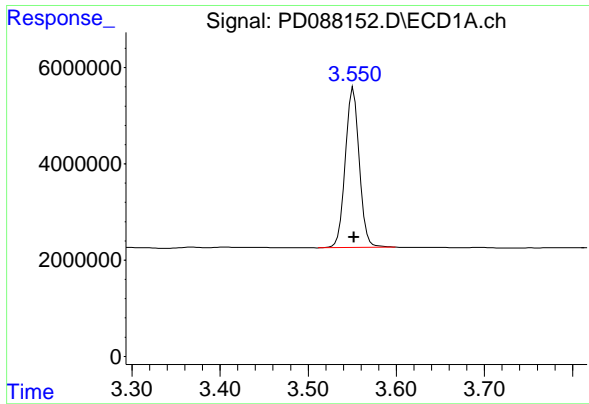
Data Path : Z:\pestpcbsrv\HPCHEM1\ECD_D\Data\PD042125\
 Data File : PD088152.D
 Signal(s) : Signal #1: ECD1A.ch Signal #2: ECD2B.ch
 Acq On : 21 Apr 2025 11:23
 Operator : AR\AJ
 Sample : PB167650BS
 Misc :
 ALS Vial : 8 Sample Multiplier: 1

Instrument :
 ECD_D
 ClientSampleId :
 PB167650BS

Integration File signal 1: autoint1.e
 Integration File signal 2: autoint2.e
 Quant Time: Apr 21 22:41:48 2025
 Quant Method : Z:\pestpcbsrv\HPCHEM1\ECD_D\Method\PD041825.M
 Quant Title : GC Extractables
 QLast Update : Sat Apr 19 06:32:27 2025
 Response via : Initial Calibration
 Integrator: ChemStation

Volume Inj. : 1 µl
 Signal #1 Phase : ZB-MR2 Signal #2 Phase: ZB-MR2
 Signal #1 Info : 30M x 0.32mm x 0.5 Signal #2 Info : 30M x 0.32mm x 0.25µm

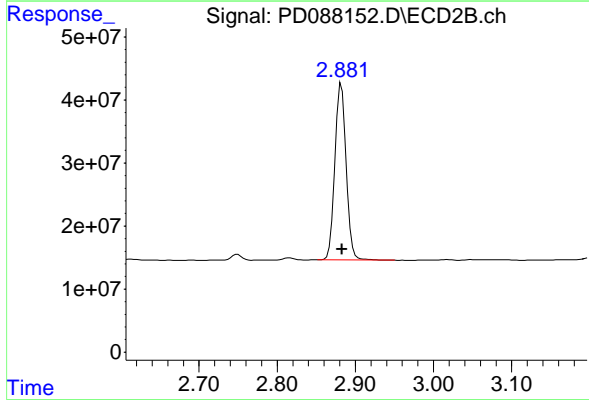




#1 Tetrachloro-m-xylene

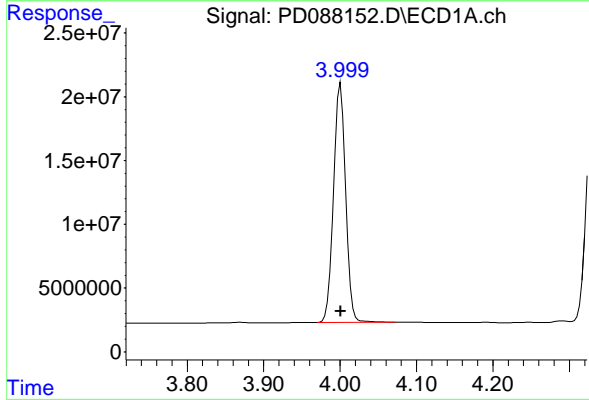
R.T.: 3.551 min
 Delta R.T.: 0.000 min
 Response: 36774940
 Conc: 18.41 ng/ml

Instrument :
 ECD_D
 ClientSampleId :
 PB167650BS



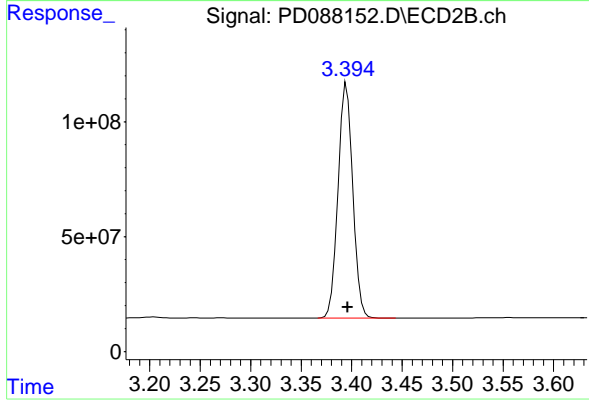
#1 Tetrachloro-m-xylene

R.T.: 2.882 min
 Delta R.T.: 0.000 min
 Response: 279402297
 Conc: 19.11 ng/ml



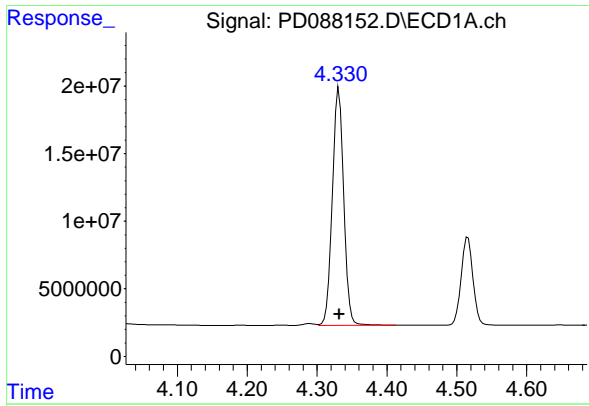
#2 alpha-BHC

R.T.: 4.001 min
 Delta R.T.: 0.000 min
 Response: 205772446
 Conc: 47.72 ng/ml



#2 alpha-BHC

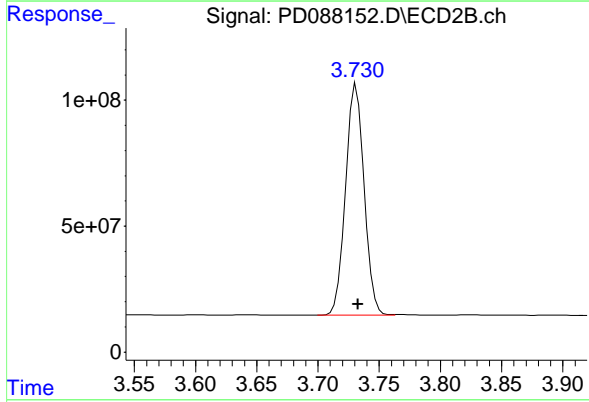
R.T.: 3.395 min
 Delta R.T.: -0.001 min
 Response: 1036920361
 Conc: 45.36 ng/ml



#3 gamma-BHC (Lindane)

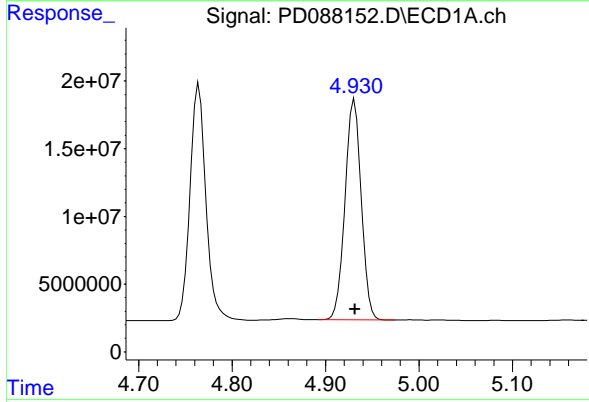
R.T.: 4.331 min
 Delta R.T.: 0.000 min
 Response: 198553803
 Conc: 47.42 ng/ml

Instrument :
 ECD_D
 ClientSampleId :
 PB167650BS



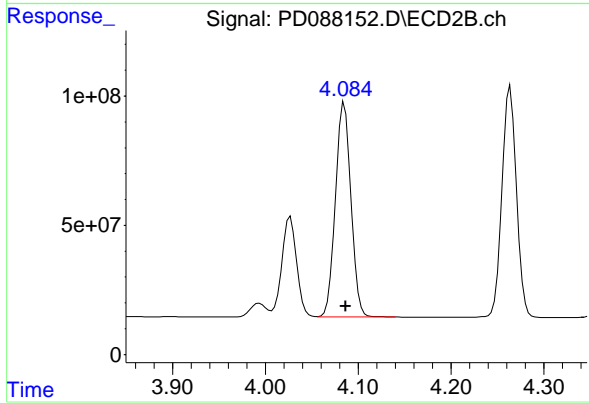
#3 gamma-BHC (Lindane)

R.T.: 3.731 min
 Delta R.T.: -0.002 min
 Response: 966582830
 Conc: 44.88 ng/ml



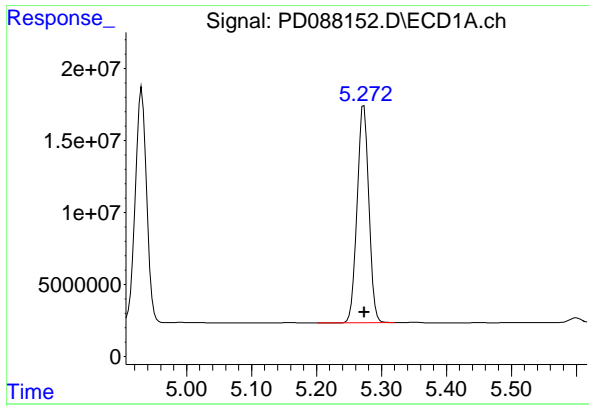
#4 Heptachlor

R.T.: 4.931 min
 Delta R.T.: 0.000 min
 Response: 196494798
 Conc: 48.65 ng/ml



#4 Heptachlor

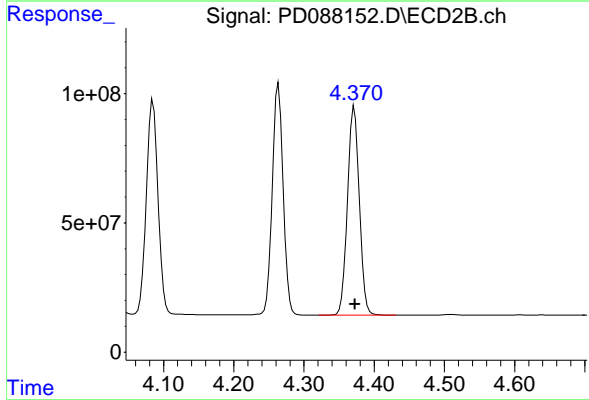
R.T.: 4.085 min
 Delta R.T.: -0.001 min
 Response: 963825198
 Conc: 45.04 ng/ml



#5 Aldrin

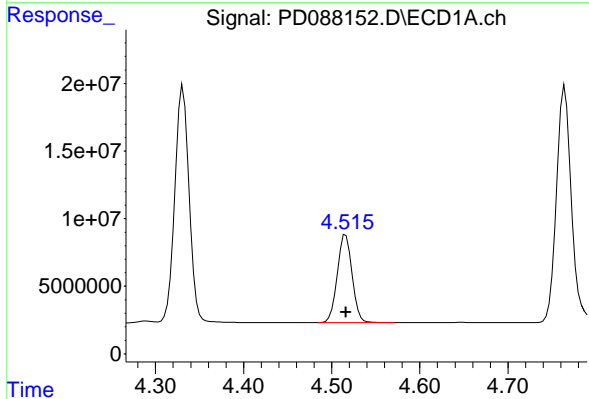
R.T.: 5.273 min
 Delta R.T.: 0.000 min
 Response: 189058610
 Conc: 47.87 ng/ml

Instrument :
 ECD_D
 ClientSampleId :
 PB167650BS



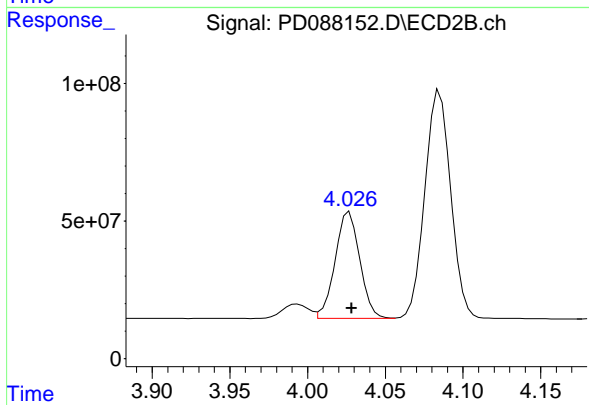
#5 Aldrin

R.T.: 4.372 min
 Delta R.T.: -0.001 min
 Response: 945494409
 Conc: 45.45 ng/ml



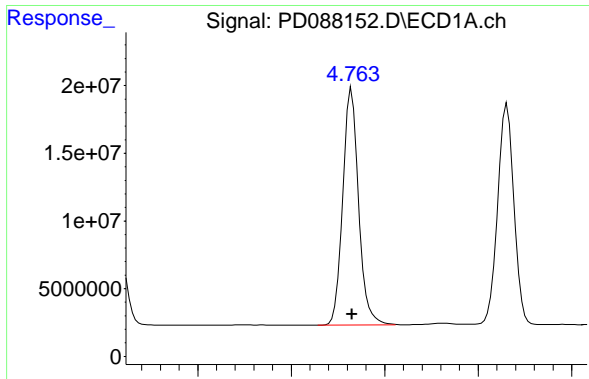
#6 beta-BHC

R.T.: 4.516 min
 Delta R.T.: 0.000 min
 Response: 76154281
 Conc: 46.91 ng/ml



#6 beta-BHC

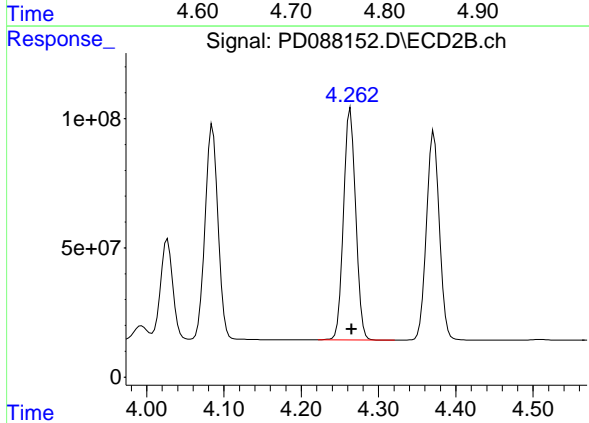
R.T.: 4.027 min
 Delta R.T.: -0.001 min
 Response: 429588098
 Conc: 46.42 ng/ml



#7 delta-BHC

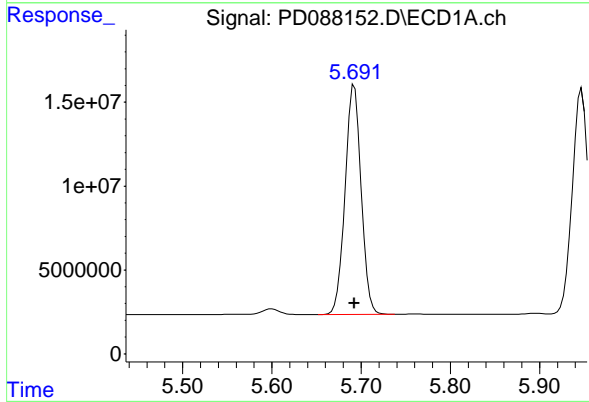
R.T.: 4.765 min
 Delta R.T.: 0.000 min
 Response: 205618249
 Conc: 49.85 ng/ml

Instrument :
 ECD_D
 ClientSampleId :
 PB167650BS



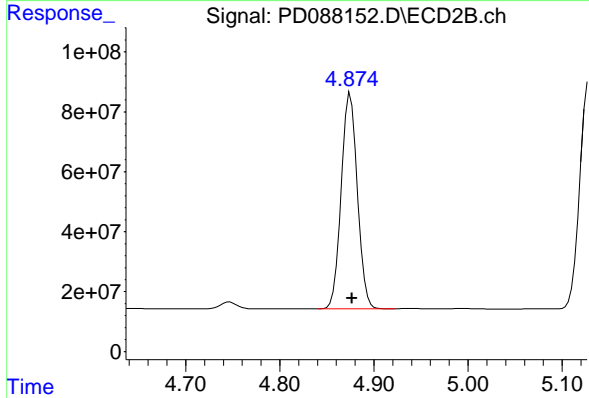
#7 delta-BHC

R.T.: 4.264 min
 Delta R.T.: -0.002 min
 Response: 968999575
 Conc: 45.58 ng/ml



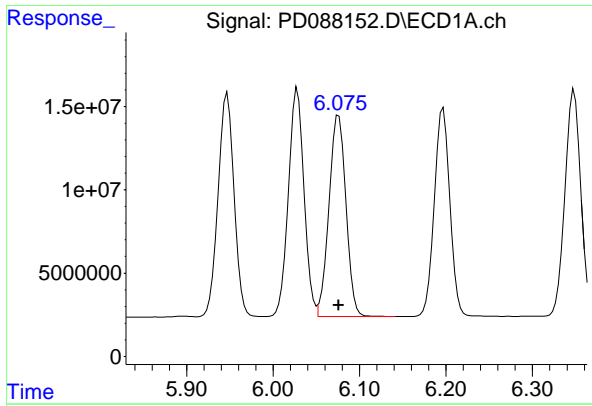
#8 Heptachlor epoxide

R.T.: 5.692 min
 Delta R.T.: 0.000 min
 Response: 171604505
 Conc: 48.02 ng/ml



#8 Heptachlor epoxide

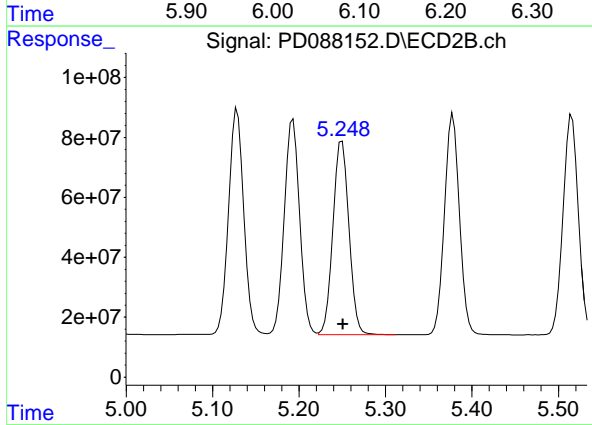
R.T.: 4.875 min
 Delta R.T.: -0.002 min
 Response: 858137830
 Conc: 45.42 ng/ml



#9 Endosulfan I

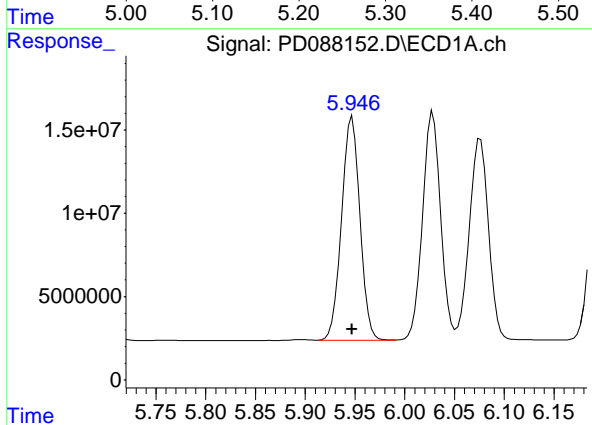
R.T.: 6.076 min
 Delta R.T.: 0.000 min
 Response: 162819127
 Conc: 48.21 ng/ml

Instrument :
 ECD_D
 ClientSampleId :
 PB167650BS



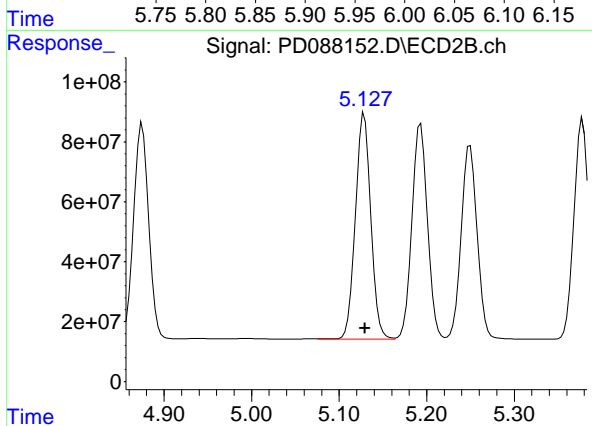
#9 Endosulfan I

R.T.: 5.250 min
 Delta R.T.: -0.001 min
 Response: 819647001
 Conc: 45.50 ng/ml



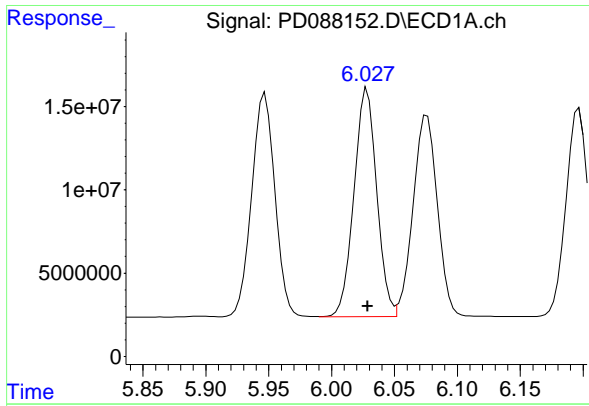
#10 gamma-Chlordane

R.T.: 5.947 min
 Delta R.T.: 0.000 min
 Response: 172712905
 Conc: 47.68 ng/ml



#10 gamma-Chlordane

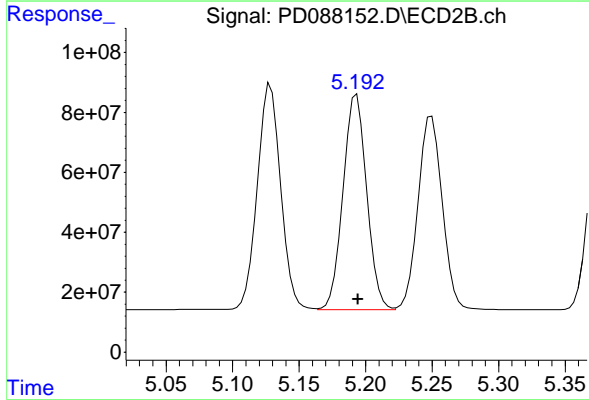
R.T.: 5.129 min
 Delta R.T.: 0.000 min
 Response: 923154602
 Conc: 45.48 ng/ml



#11 alpha-Chlordane

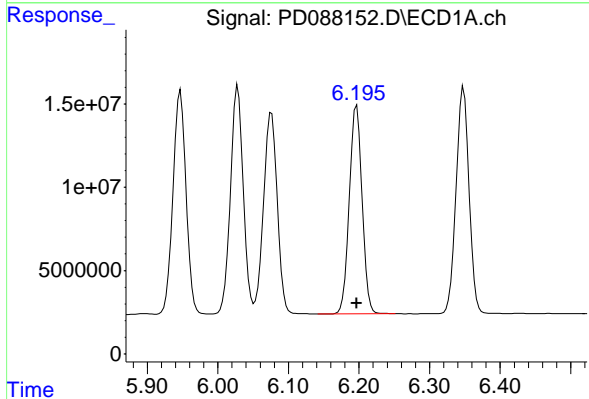
R.T.: 6.028 min
 Delta R.T.: 0.000 min
 Response: 172710604
 Conc: 47.85 ng/ml

Instrument :
 ECD_D
 ClientSampleId :
 PB167650BS



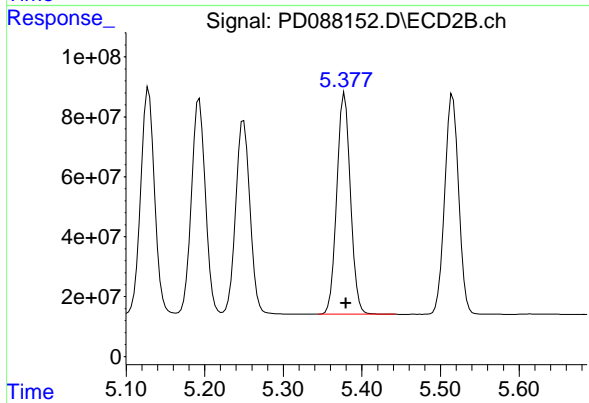
#11 alpha-Chlordane

R.T.: 5.193 min
 Delta R.T.: -0.001 min
 Response: 889059159
 Conc: 45.35 ng/ml



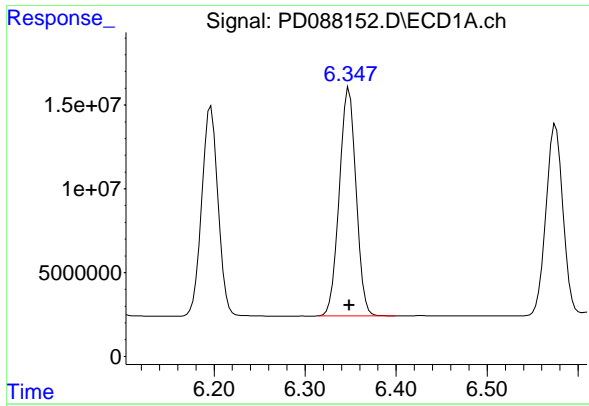
#12 4,4'-DDE

R.T.: 6.197 min
 Delta R.T.: 0.000 min
 Response: 156728525
 Conc: 47.52 ng/ml



#12 4,4'-DDE

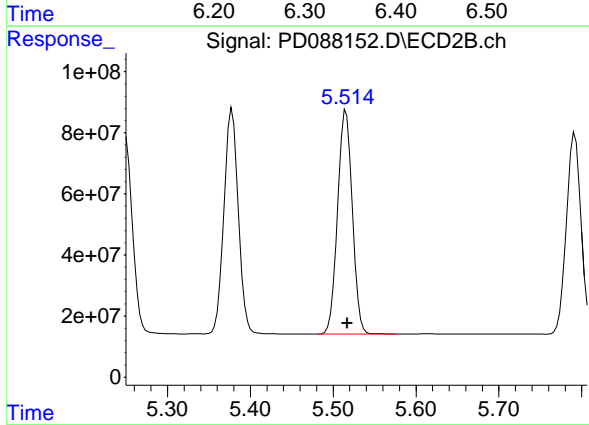
R.T.: 5.378 min
 Delta R.T.: -0.001 min
 Response: 888395416
 Conc: 45.11 ng/ml



#13 Dieldrin

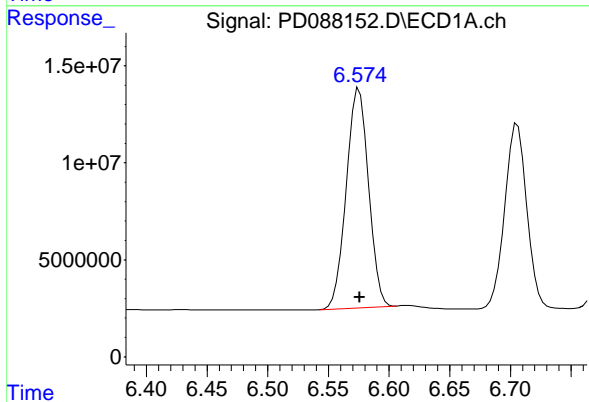
R.T.: 6.348 min
 Delta R.T.: 0.000 min
 Response: 174143378
 Conc: 48.80 ng/ml

Instrument :
 ECD_D
 ClientSampleId :
 PB167650BS



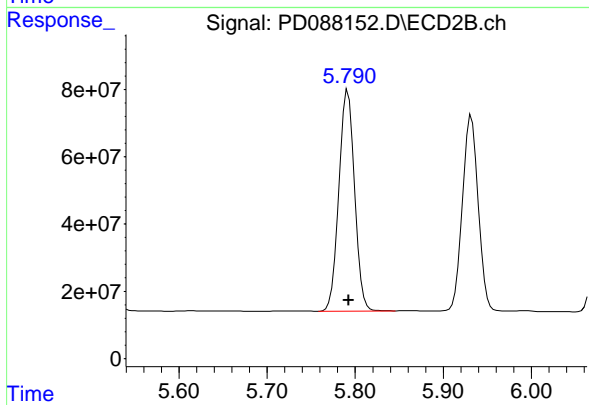
#13 Dieldrin

R.T.: 5.516 min
 Delta R.T.: -0.001 min
 Response: 904168517
 Conc: 45.36 ng/ml



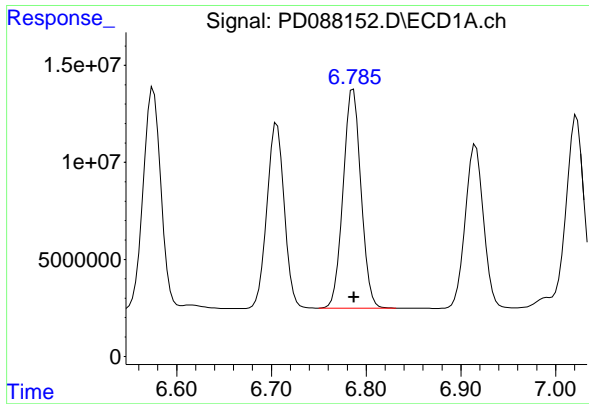
#14 Endrin

R.T.: 6.575 min
 Delta R.T.: 0.000 min
 Response: 144892262
 Conc: 48.58 ng/ml



#14 Endrin

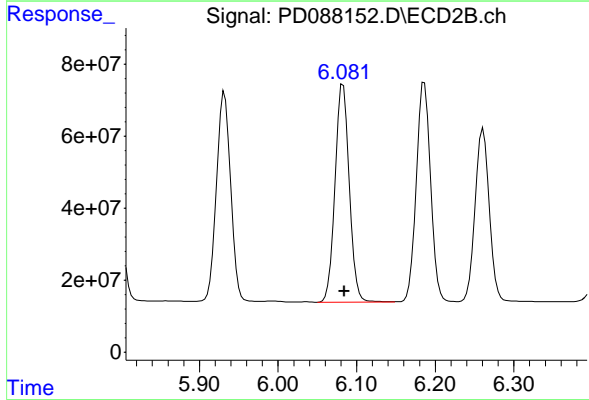
R.T.: 5.792 min
 Delta R.T.: -0.001 min
 Response: 814683256
 Conc: 44.76 ng/ml



#15 Endosulfan II

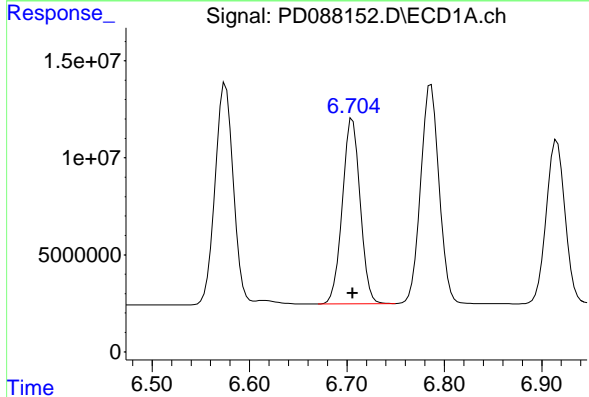
R.T.: 6.786 min
 Delta R.T.: 0.000 min
 Response: 148051006
 Conc: 47.36 ng/ml

Instrument :
 ECD_D
 ClientSampleId :
 PB167650BS



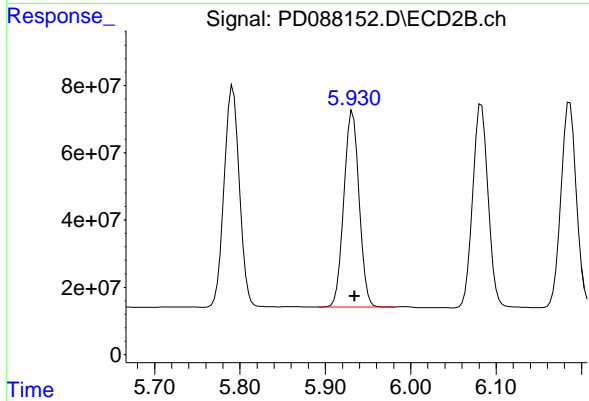
#15 Endosulfan II

R.T.: 6.083 min
 Delta R.T.: -0.002 min
 Response: 760562851
 Conc: 43.41 ng/ml



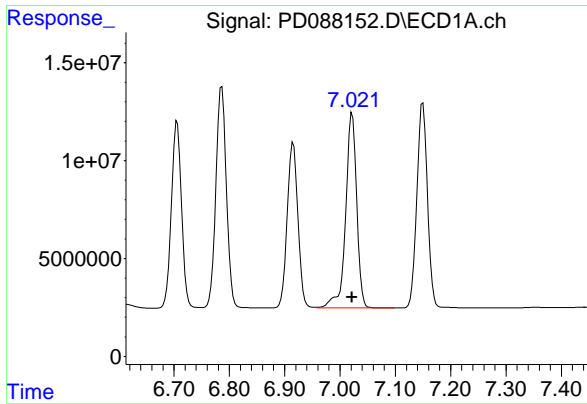
#16 4,4'-DDD

R.T.: 6.706 min
 Delta R.T.: 0.000 min
 Response: 121382038
 Conc: 48.26 ng/ml



#16 4,4'-DDD

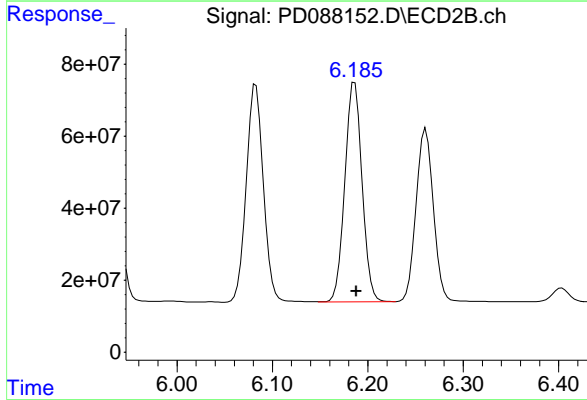
R.T.: 5.932 min
 Delta R.T.: -0.002 min
 Response: 726059338
 Conc: 44.31 ng/ml



#17 4,4' -DDT

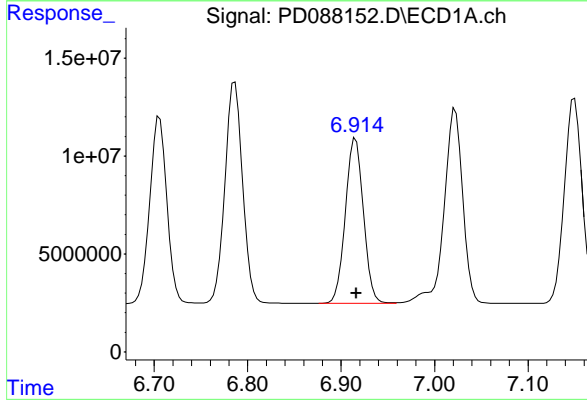
R.T.: 7.022 min
 Delta R.T.: 0.000 min
 Response: 137772865
 Conc: 49.60 ng/ml

Instrument :
 ECD_D
 ClientSampleId :
 PB167650BS



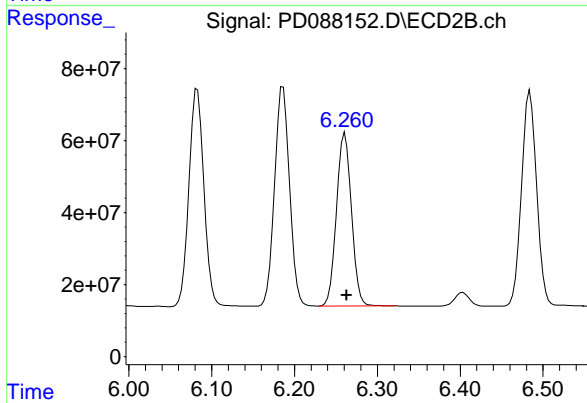
#17 4,4' -DDT

R.T.: 6.186 min
 Delta R.T.: -0.002 min
 Response: 769844680
 Conc: 45.24 ng/ml



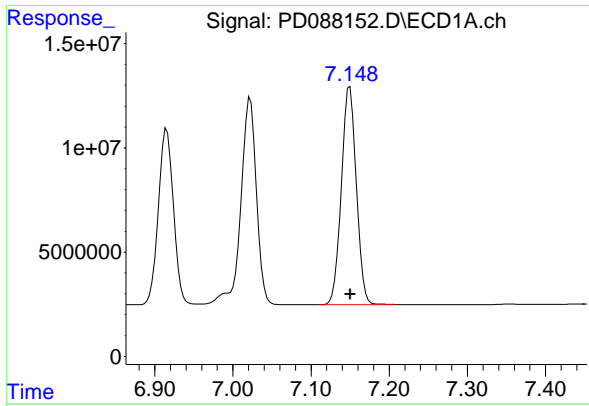
#18 Endrin aldehyde

R.T.: 6.916 min
 Delta R.T.: 0.000 min
 Response: 113374267
 Conc: 49.12 ng/ml



#18 Endrin aldehyde

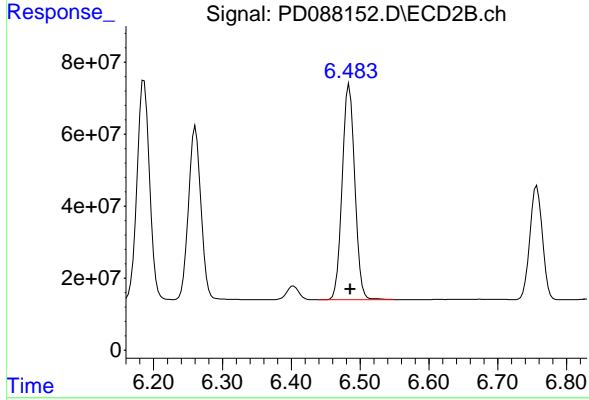
R.T.: 6.261 min
 Delta R.T.: -0.002 min
 Response: 603967392
 Conc: 45.41 ng/ml



#19 Endosulfan Sulfate

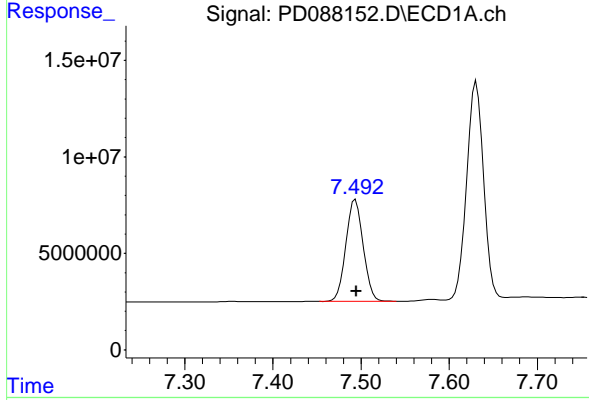
R.T.: 7.150 min
 Delta R.T.: 0.000 min
 Response: 139181970
 Conc: 48.40 ng/ml

Instrument :
 ECD_D
 ClientSampleId :
 PB167650BS



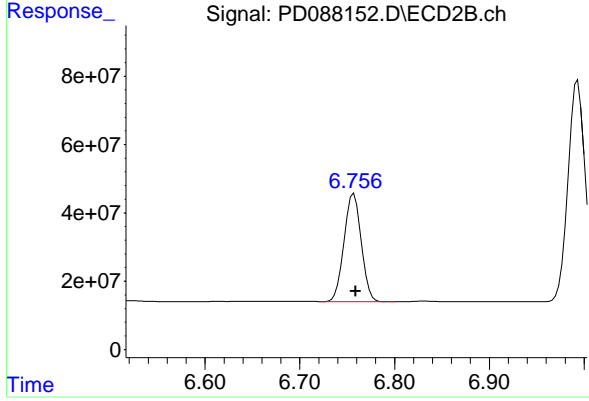
#19 Endosulfan Sulfate

R.T.: 6.484 min
 Delta R.T.: -0.002 min
 Response: 761697959
 Conc: 44.46 ng/ml



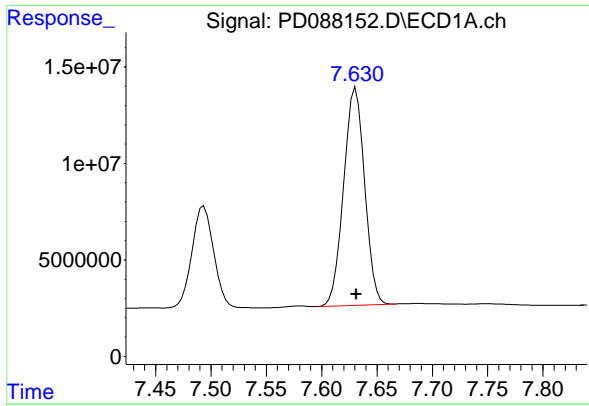
#20 Methoxychlor

R.T.: 7.494 min
 Delta R.T.: 0.000 min
 Response: 72010530
 Conc: 48.02 ng/ml



#20 Methoxychlor

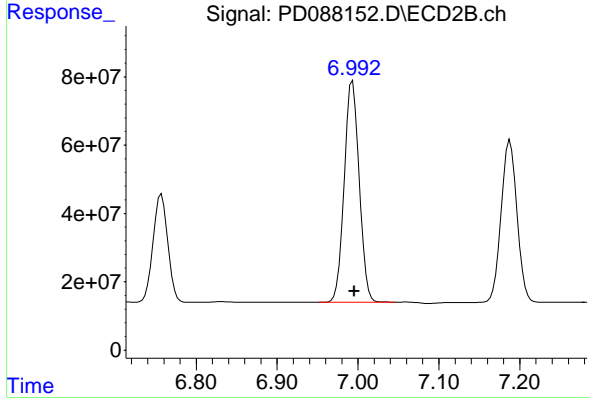
R.T.: 6.757 min
 Delta R.T.: -0.002 min
 Response: 399562742
 Conc: 43.81 ng/ml



#21 Endrin ketone

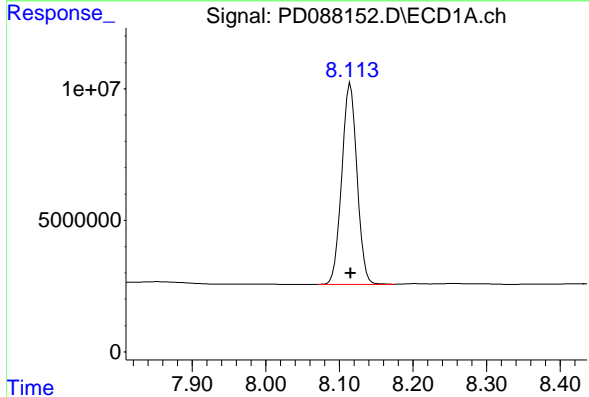
R.T.: 7.631 min
 Delta R.T.: 0.000 min
 Response: 149241999
 Conc: 48.35 ng/ml

Instrument :
 ECD_D
 ClientSampleId :
 PB167650BS



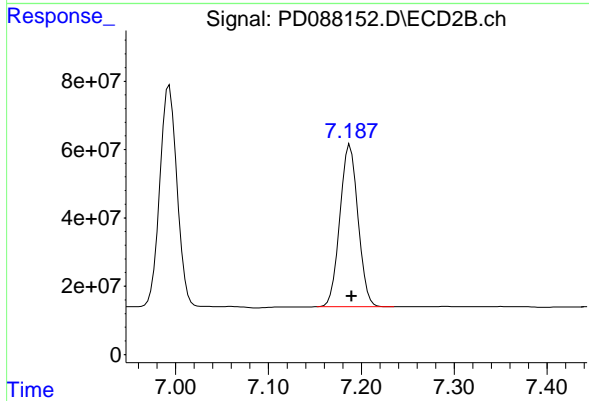
#21 Endrin ketone

R.T.: 6.993 min
 Delta R.T.: -0.002 min
 Response: 832973715
 Conc: 44.53 ng/ml



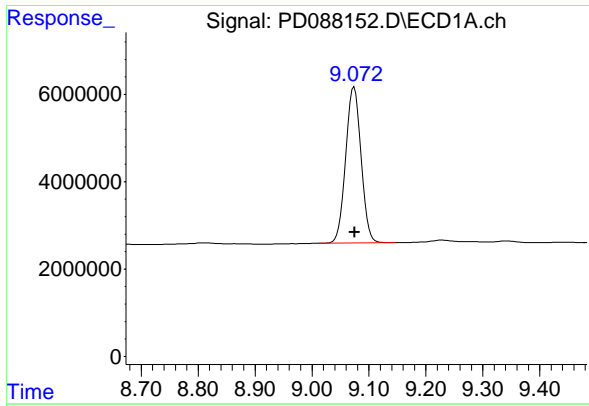
#22 Mirex

R.T.: 8.115 min
 Delta R.T.: 0.000 min
 Response: 110196620
 Conc: 46.93 ng/ml



#22 Mirex

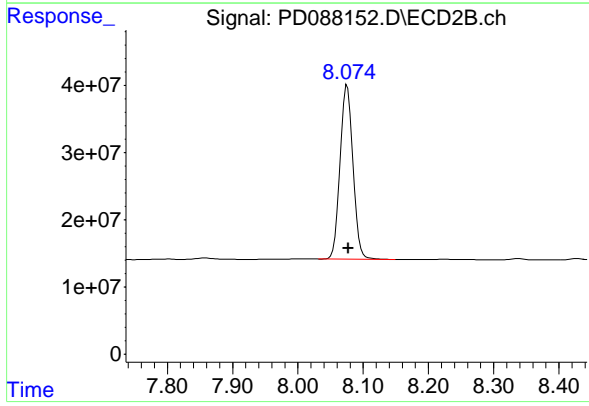
R.T.: 7.188 min
 Delta R.T.: -0.002 min
 Response: 645614923
 Conc: 43.56 ng/ml



#28 Decachlorobiphenyl

R.T.: 9.074 min
Delta R.T.: -0.001 min
Response: 67361875
Conc: 20.36 ng/ml

Instrument :
ECD_D
ClientSampleId :
PB167650BS



#28 Decachlorobiphenyl

R.T.: 8.076 min
Delta R.T.: -0.001 min
Response: 357076682
Conc: 19.32 ng/ml