

Data Path : Z:\pestpcbsrv\HPCHEM1\ECD\_D\Data\PD042220\  
 Data File : PD057825.D  
 Signal(s) : Signal #1: ECD1A.ch Signal #2: ECD2B.ch  
 Acq On : 22 Apr 2020 16:15  
 Operator : AJ\MA  
 Sample : INDA304  
 Misc :  
 ALS Vial : 17 Sample Multiplier: 1

Instrument :  
 ECD\_D  
 ClientSampleId :  
 INDA304

Integration File signal 1: autoint1.e  
 Integration File signal 2: autoint2.e  
 Quant Time: Apr 23 05:53:50 2020  
 Quant Method : Z:\pestpcbsrv\HPCHEM1\ECD\_D\Method\PD040720CLP.M  
 Quant Title : GC Extractables  
 QLast Update : Wed Apr 08 07:44:07 2020  
 Response via : Initial Calibration  
 Integrator: ChemStation

Volume Inj. : 1 µl  
 Signal #1 Phase : ZB-MR2 Signal #2 Phase: ZB-MR1  
 Signal #1 Info : 30M x 0.32mm x0.2 Signal #2 Info : 30M x 0.32mm x 0.50µm

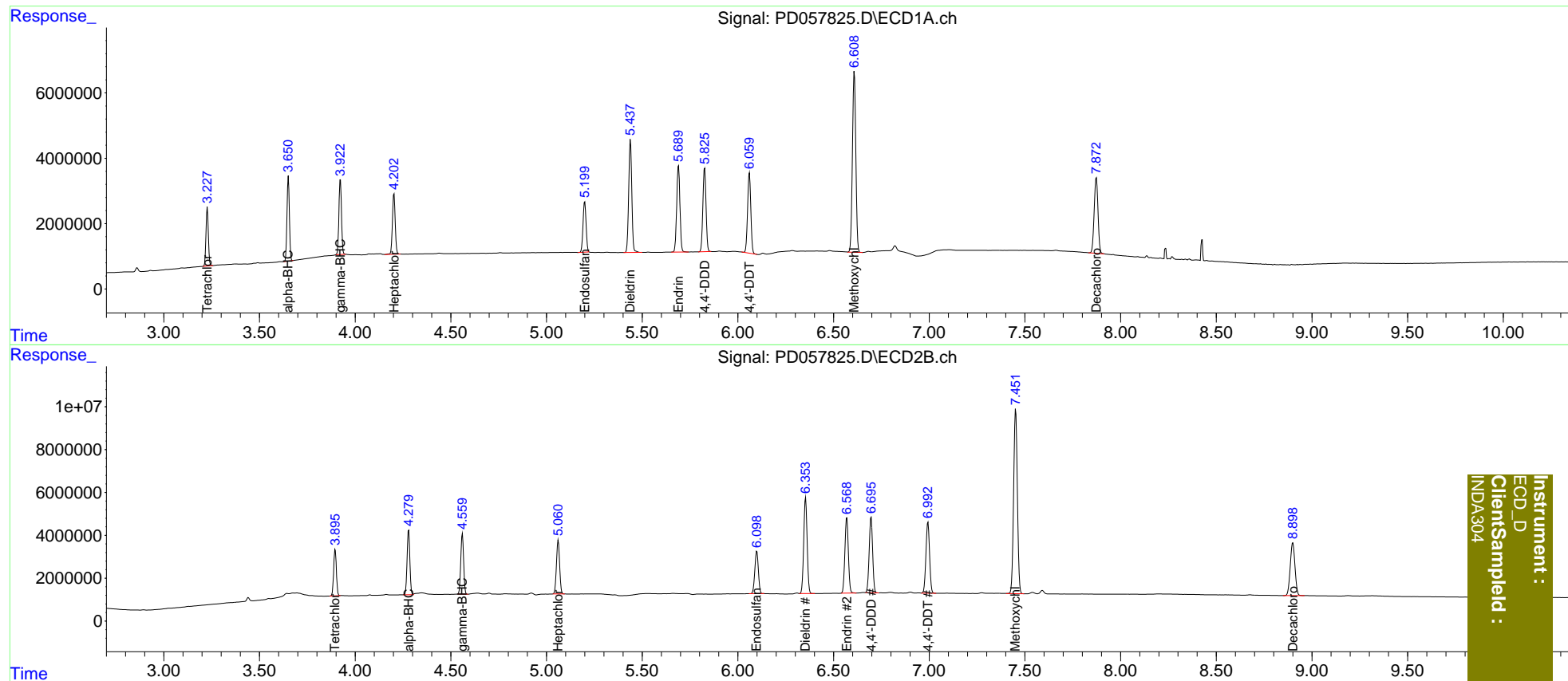
	Compound	RT#1	RT#2	Resp#1	Resp#2	ng/ml	ng/ml
-----							
System Monitoring Compounds							
1)	SA Tetrachlo...	3.228	3.896	15532283	21462505	21.340	22.155
27)	SA Decachlor...	7.873	8.900	32096777	42225078	38.016	38.558
Target Compounds							
2)	A alpha-BHC	3.651	4.280	22465956	30329534	21.410	22.141
3)	MA gamma-BHC...	3.923	4.561	21525031	29111591	20.969	22.218
4)	MA Heptachlor	4.203	5.062	18753698	28840314	21.025	21.710
9)	A Endosulfan I	5.200	6.099	17090889	25449347	20.571	21.780
13)	MA Dieldrin	5.439	6.354	38889535	55312574	41.819	43.461
14)	MA Endrin	5.690	6.570	31234604	44490686	39.243	41.017
16)	A 4,4'-DDD	5.827	6.697	29434182	44105324	41.322	43.210
17)	MA 4,4'-DDT	6.061	6.994	28708311	43671884	40.625	41.969
20)	A Methoxychlor	6.609	7.452	67865507	117.3E6	193.010	206.492
-----							

(f)=RT Delta > 1/2 Window (#)=Amounts differ by > 25% (m)=manual int.

Data Path : Z:\pestpcbsrv\HPCHEM1\ECD\_D\Data\PD042220\  
 Data File : PD057825.D  
 Signal(s) : Signal #1: ECD1A.ch Signal #2: ECD2B.ch  
 Acq On : 22 Apr 2020 16:15  
 Operator : AJ\MA  
 Sample : INDA304  
 Misc :  
 ALS Vial : 17 Sample Multiplier: 1

Integration File signal 1: autoint1.e  
 Integration File signal 2: autoint2.e  
 Quant Time: Apr 23 05:53:50 2020  
 Quant Method : Z:\pestpcbsrv\HPCHEM1\ECD\_D\Method\PD040720CLP.M  
 Quant Title : GC Extractables  
 QLast Update : Wed Apr 08 07:44:07 2020  
 Response via : Initial Calibration  
 Integrator: ChemStation

Volume Inj. : 1 µl  
 Signal #1 Phase : ZB-MR2 Signal #2 Phase: ZB-MR1  
 Signal #1 Info : 30M x 0.32mm x0.2 Signal #2 Info : 30M x 0.32mm x 0.50µm



Instrument :  
 ECD\_D  
 ClientSampleId :  
 INDA304