

Data Path : Z:\pestpcbsrv\HPCHEM1\ECD_D\Data\PD042221\
 Data File : PD062238.D
 Signal(s) : Signal #1: ECD1A.ch Signal #2: ECD2B.ch
 Acq On : 22 Apr 2021 11:05
 Operator : AR\AJ
 Sample : PSTDCCC050
 Misc :
 ALS Vial : 4 Sample Multiplier: 1

Instrument :
 ECD_D
ClientSampled :
 PSTDCCC050

Manual Integrations
APPROVED
 Ankita
 4/23/2021 4:50:31 PM

Integration File signal 1: autoint1.e
 Integration File signal 2: autoint2.e
 Quant Time: Apr 22 22:00:06 2021
 Quant Method : Z:\pestpcbsrv\HPCHEM1\ECD_D\Method\PD032921.M
 Quant Title : GC Extractables
 QLast Update : Tue Mar 30 04:47:56 2021
 Response via : Initial Calibration
 Integrator: ChemStation

Volume Inj. : 2 µl
 Signal #1 Phase : ZB-MR2 Signal #2 Phase: ZB-MR1
 Signal #1 Info : 30M x 0.32mm x0.2 Signal #2 Info : 30M x 0.32mm x 0.50µm

Compound	RT#1	RT#2	Resp#1	Resp#2	ng/ml	ng/ml

System Monitoring Compounds						
1) SA Tetrachlo...	3.489	3.981	38718604	462.3E6	46.242	53.200
2) SA Decachlor...	8.263	9.044	57667068	428.1E6	46.867	45.343
Target Compounds						
2) A alpha-BHC	3.929	4.369	60493388	754.9E6	47.896	56.120
3) MA gamma-BHC...	4.214	4.654	57868376	684.7E6	48.741	54.891
4) MA Heptachlor	4.518	5.163	59772977	695.4E6	51.344	53.360
5) MB Aldrin	4.768	5.468	58516459	667.5E6	48.758	53.640
6) B beta-BHC	4.465	4.824	28339675	291.4E6	51.969	56.410
7) B delta-BHC	4.671	5.041	56515865	630.7E6	46.522	47.686
8) B Heptachlo...	5.213	5.854	57948793	563.3E6	50.551	47.577
9) A Endosulfan I	5.553	6.211	55364010	567.8E6	50.417	52.382
10) B gamma-Chl...	5.440	6.089	60511752	630.2E6	51.660	53.163
11) B alpha-Chl...	5.499	6.161	59568836	598.0E6	51.263	52.455
12) B 4,4'-DDE	5.662	6.318	56045727	598.9E6	49.877	51.972
13) MA Dieldrin	5.797	6.468	55487764	597.3E6	48.004	51.750
14) MA Endrin	6.057	6.686	47691810	513.9E6	46.415	51.929
15) B Endosulfa...	6.330	6.895	44304256	484.5E6	43.228	51.026
16) A 4,4'-DDD	6.180	6.807	45357387	493.1E6	48.738	52.075
17) MA 4,4'-DDT	6.421	7.106	40820414	477.9E6	45.319m	50.036
18) B Endrin al...	6.498	7.018	36606063	388.4E6	42.846	49.386
19) B Endosulfa...	6.712	7.242	50827120	498.7E6	47.104	49.760
20) A Methoxychlor	6.968	7.564	26228594	228.9E6	55.510	50.769
21) B Endrin ke...	7.206	7.713	60396215	483.9E6	47.323	47.709
22) Mirex	7.396	8.168	47228984	315.0E6	57.152	48.883

(f)=RT Delta > 1/2 Window (#)=Amounts differ by > 25% (m)=manual int.

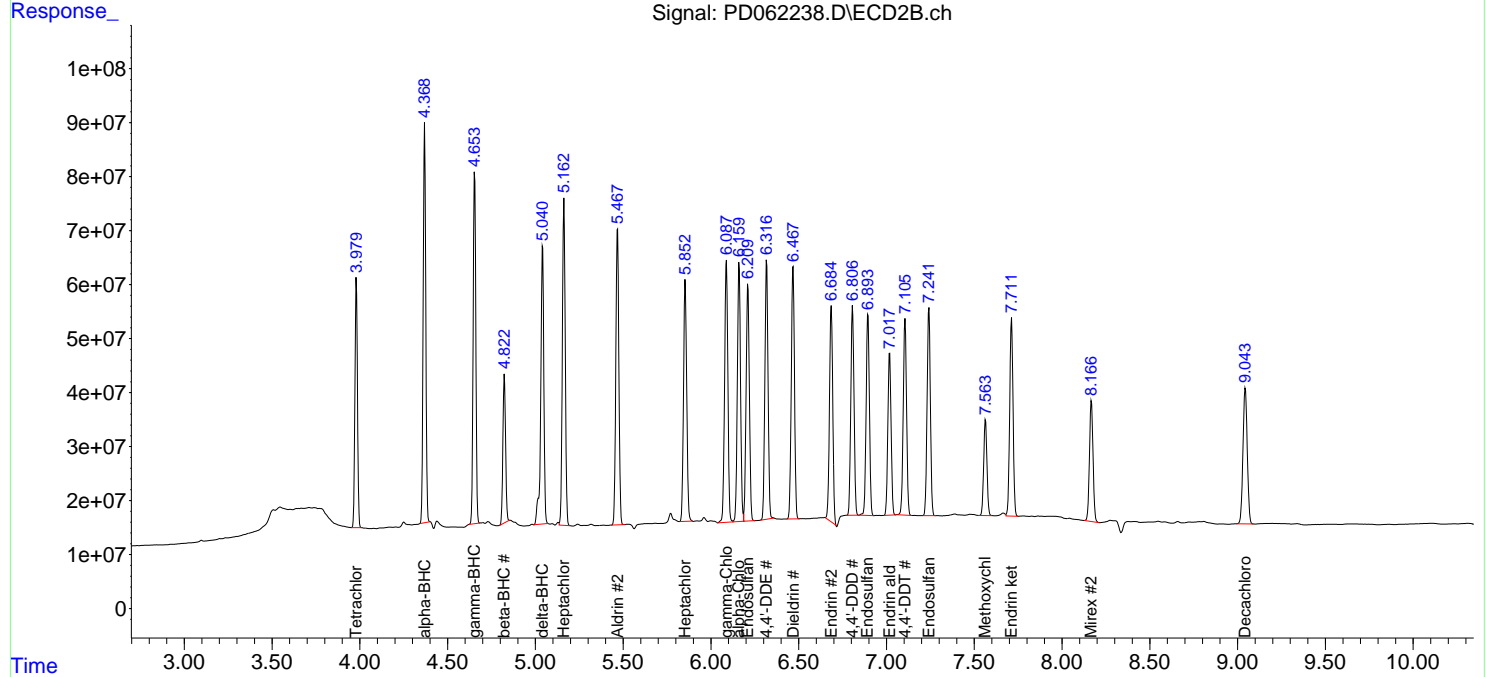
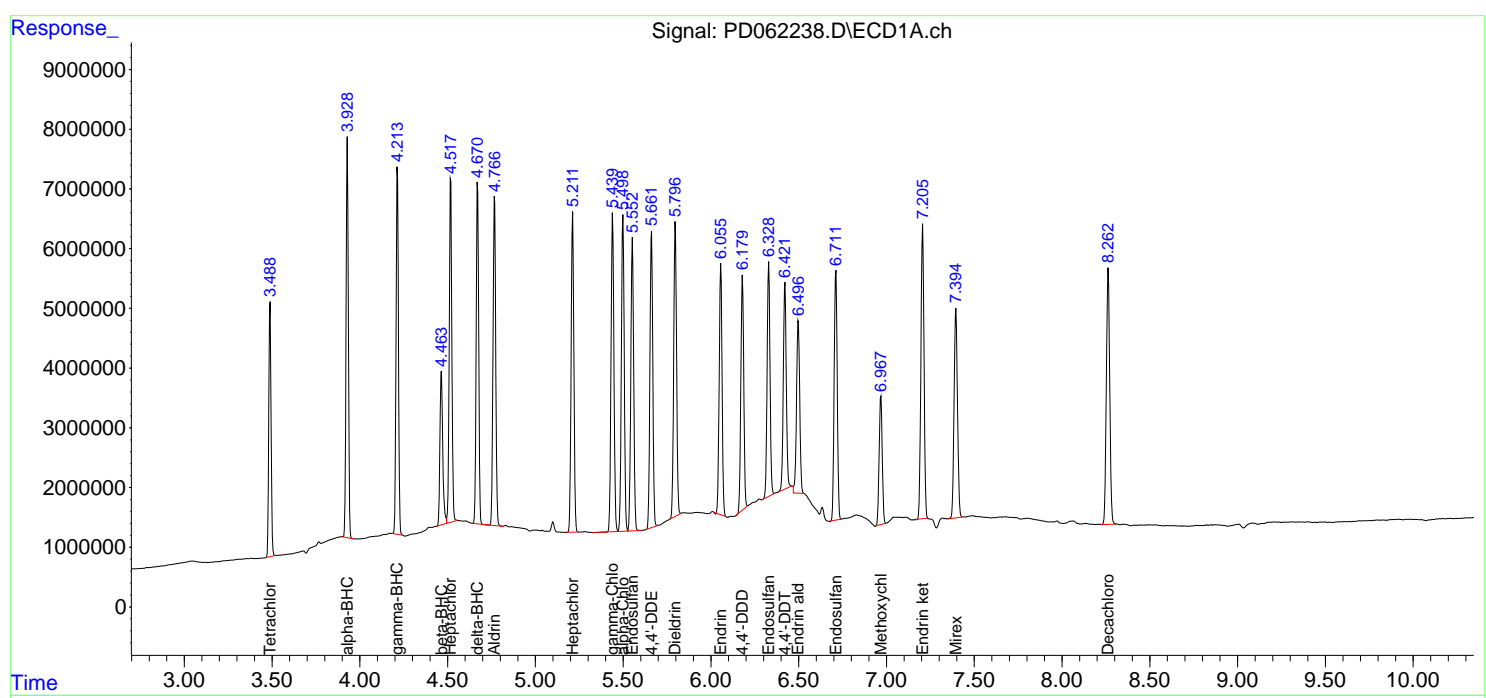
Data Path : Z:\pestpcbsrv\HPCHEM1\ECD_D\Data\PD042221\
 Data File : PD062238.D
 Signal(s) : Signal #1: ECD1A.ch Signal #2: ECD2B.ch
 Acq On : 22 Apr 2021 11:05
 Operator : AR\AJ
 Sample : PSTDCCC050
 Misc :
 ALS Vial : 4 Sample Multiplier: 1

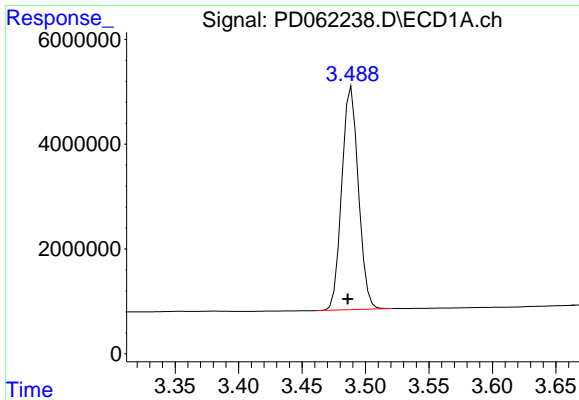
Instrument :
 ECD_D
 Client Sampled :
 PSTDCCC050

Manual Integrations
APPROVED
 Ankita
 4/23/2021 4:50:31 PM

Integration File signal 1: autoint1.e
 Integration File signal 2: autoint2.e
 Quant Time: Apr 22 22:00:06 2021
 Quant Method : Z:\pestpcbsrv\HPCHEM1\ECD_D\Method\PD032921.M
 Quant Title : GC Extractables
 QLast Update : Tue Mar 30 04:47:56 2021
 Response via : Initial Calibration
 Integrator: ChemStation

Volume Inj. : 2 µl
 Signal #1 Phase : ZB-MR2 Signal #2 Phase: ZB-MR1
 Signal #1 Info : 30M x 0.32mm x0.2 Signal #2 Info : 30M x 0.32mm x 0.50µm

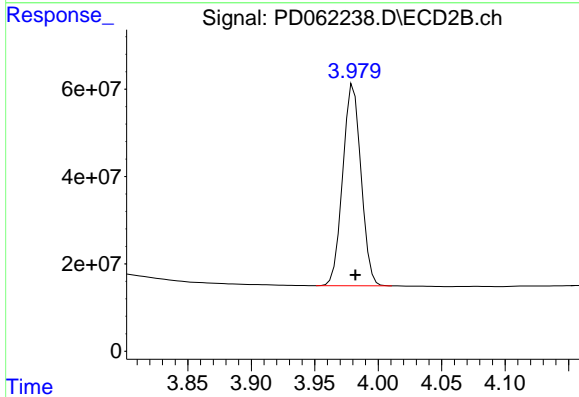




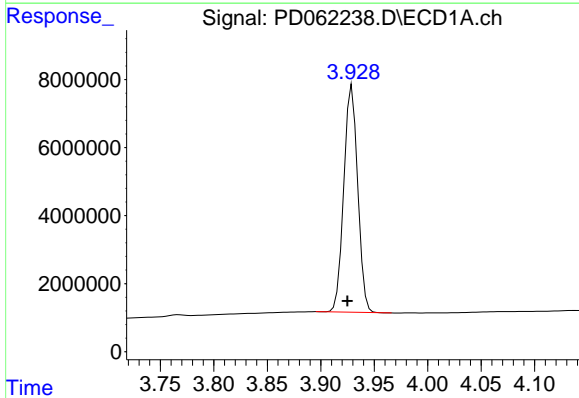
#1 Tetrachloro-m-xylene
 R.T.: 3.489 min
 Delta R.T.: 0.003 min
 Response: 38718604
 Conc: 46.24 ng/ml

Instrument :
 ECD_D
ClientSampled :
 PSTDCCC050

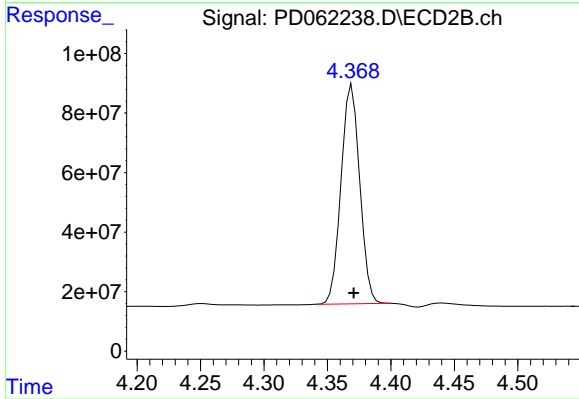
Manual Integrations
APPROVED
 Ankita
 4/23/2021 4:50:31 PM



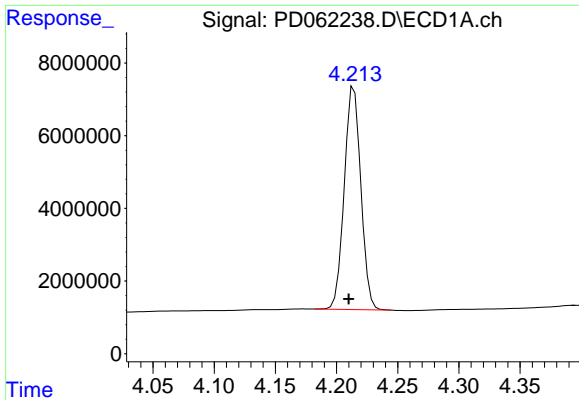
#1 Tetrachloro-m-xylene
 R.T.: 3.981 min
 Delta R.T.: -0.001 min
 Response: 462251169
 Conc: 53.20 ng/ml



#2 alpha-BHC
 R.T.: 3.929 min
 Delta R.T.: 0.004 min
 Response: 60493388
 Conc: 47.90 ng/ml



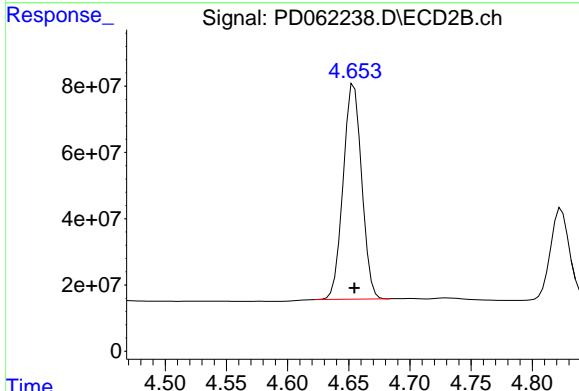
#2 alpha-BHC
 R.T.: 4.369 min
 Delta R.T.: -0.001 min
 Response: 754857175
 Conc: 56.12 ng/ml



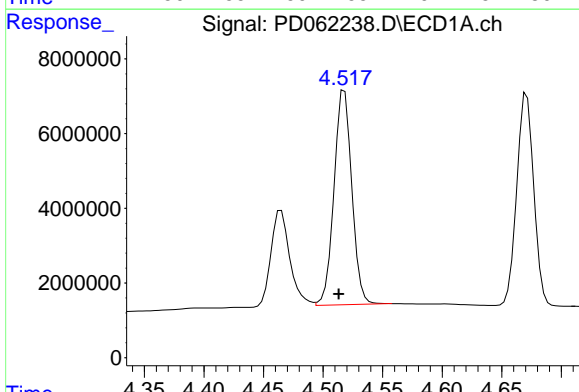
#3 gamma-BHC (Lindane)
 R.T.: 4.214 min
 Delta R.T.: 0.004 min
 Response: 57868376
 Conc: 48.74 ng/ml

Instrument :
 ECD_D
ClientSampled :
 PSTDCCC050

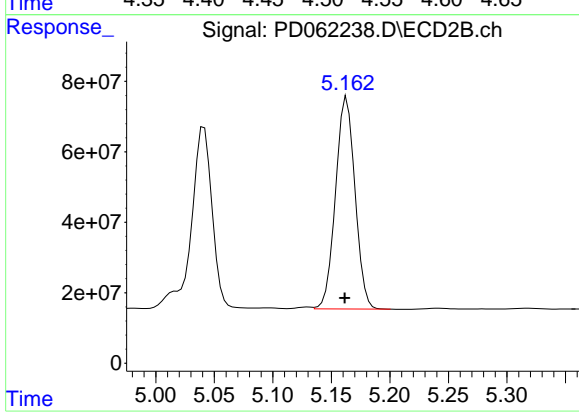
Manual Integrations
APPROVED
 Ankita
 4/23/2021 4:50:31 PM



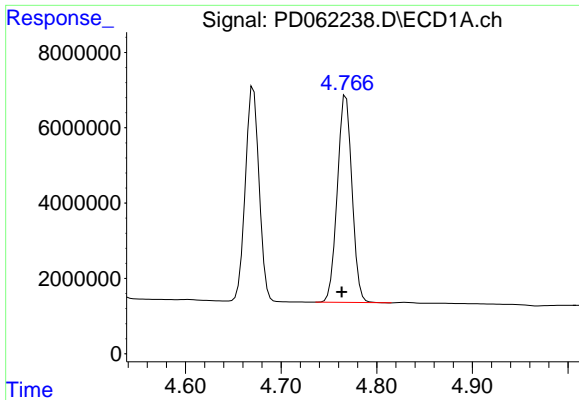
#3 gamma-BHC (Lindane)
 R.T.: 4.654 min
 Delta R.T.: 0.000 min
 Response: 684699415
 Conc: 54.89 ng/ml



#4 Heptachlor
 R.T.: 4.518 min
 Delta R.T.: 0.005 min
 Response: 59772977
 Conc: 51.34 ng/ml



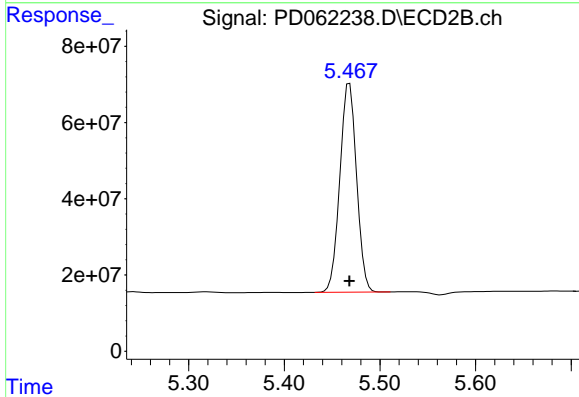
#4 Heptachlor
 R.T.: 5.163 min
 Delta R.T.: 0.002 min
 Response: 695365249
 Conc: 53.36 ng/ml



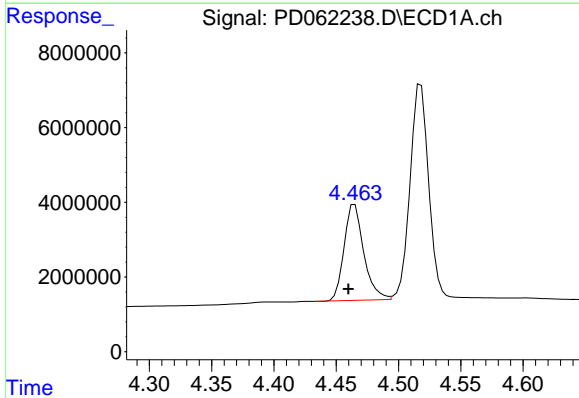
#5 Aldrin
 R.T.: 4.768 min
 Delta R.T.: 0.004 min
 Response: 58516459
 Conc: 48.76 ng/ml

Instrument :
 ECD_D
ClientSampled :
 PSTDCCC050

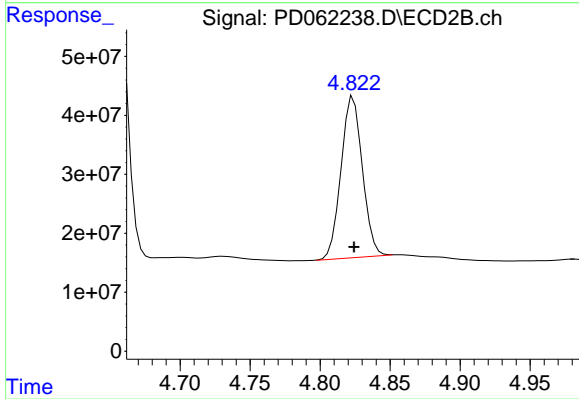
Manual Integrations
APPROVED
 Ankita
 4/23/2021 4:50:31 PM



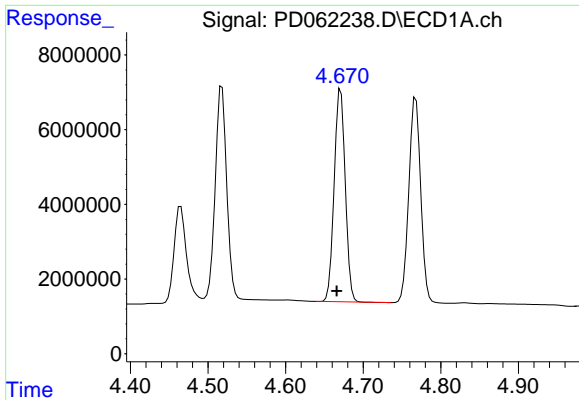
#5 Aldrin
 R.T.: 5.468 min
 Delta R.T.: 0.000 min
 Response: 667506956
 Conc: 53.64 ng/ml



#6 beta-BHC
 R.T.: 4.465 min
 Delta R.T.: 0.005 min
 Response: 28339675
 Conc: 51.97 ng/ml



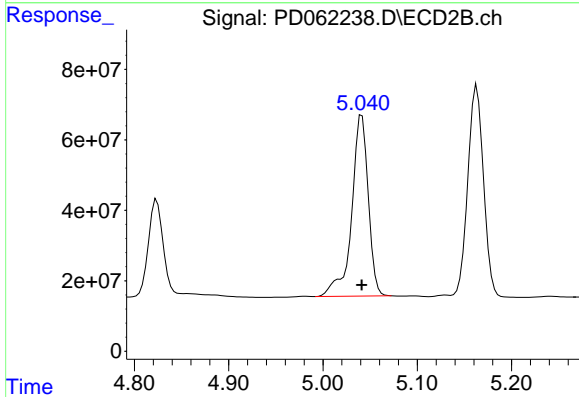
#6 beta-BHC
 R.T.: 4.824 min
 Delta R.T.: 0.000 min
 Response: 291365209
 Conc: 56.41 ng/ml



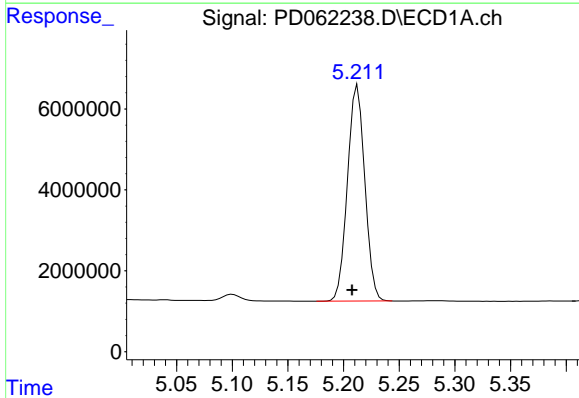
#7 delta-BHC
 R.T.: 4.671 min
 Delta R.T.: 0.005 min
 Response: 56515865
 Conc: 46.52 ng/ml

Instrument :
 ECD_D
ClientSampled :
 PSTDCCC050

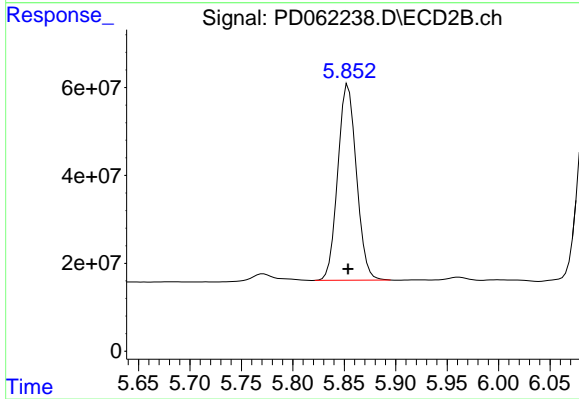
Manual Integrations
APPROVED
 Ankita
 4/23/2021 4:50:31 PM



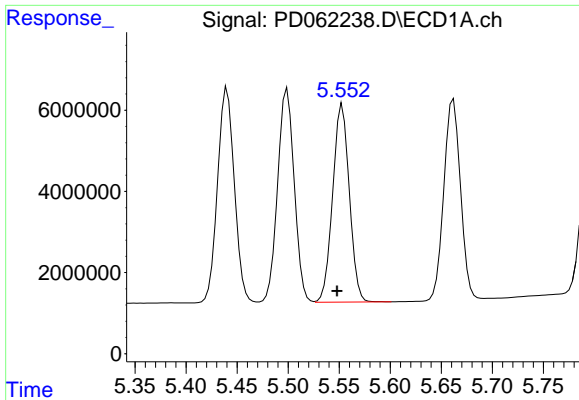
#7 delta-BHC
 R.T.: 5.041 min
 Delta R.T.: 0.000 min
 Response: 630739958
 Conc: 47.69 ng/ml



#8 Heptachlor epoxide
 R.T.: 5.213 min
 Delta R.T.: 0.005 min
 Response: 57948793
 Conc: 50.55 ng/ml



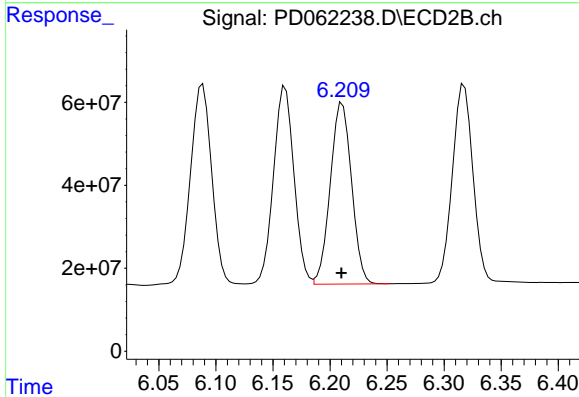
#8 Heptachlor epoxide
 R.T.: 5.854 min
 Delta R.T.: 0.000 min
 Response: 563348836
 Conc: 47.58 ng/ml



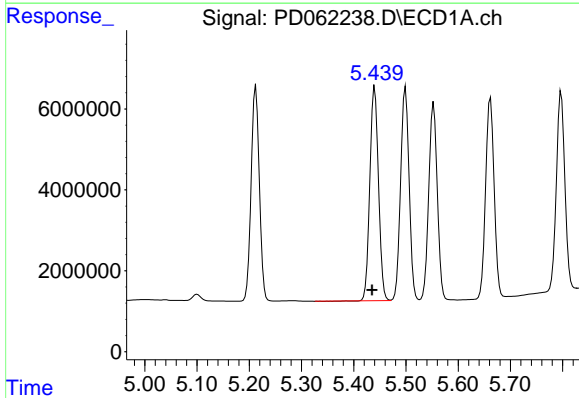
#9 Endosulfan I
 R.T.: 5.553 min
 Delta R.T.: 0.005 min
 Response: 55364010
 Conc: 50.42 ng/ml

Instrument :
 ECD_D
ClientSampled :
 PSTDCCC050

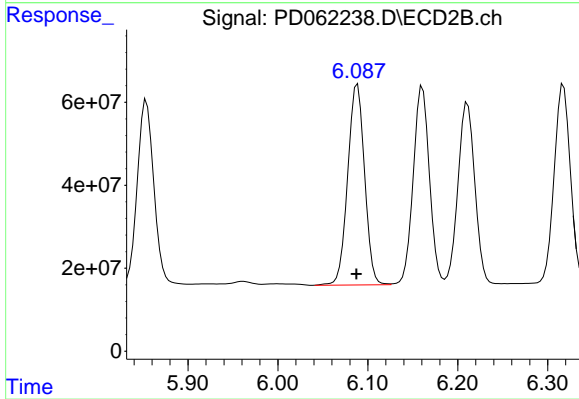
Manual Integrations
APPROVED
 Ankita
 4/23/2021 4:50:31 PM



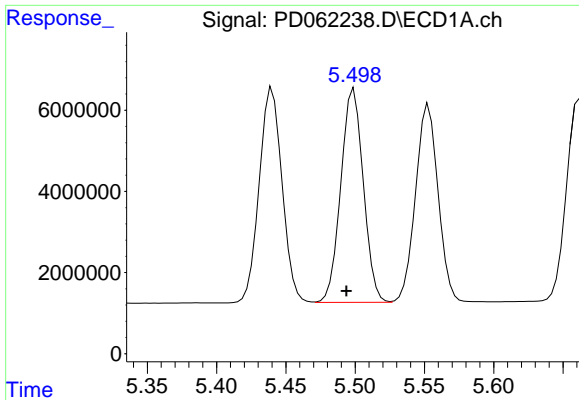
#9 Endosulfan I
 R.T.: 6.211 min
 Delta R.T.: 0.000 min
 Response: 567834131
 Conc: 52.38 ng/ml



#10 gamma-Chlordane
 R.T.: 5.440 min
 Delta R.T.: 0.005 min
 Response: 60511752
 Conc: 51.66 ng/ml



#10 gamma-Chlordane
 R.T.: 6.089 min
 Delta R.T.: 0.001 min
 Response: 630245468
 Conc: 53.16 ng/ml



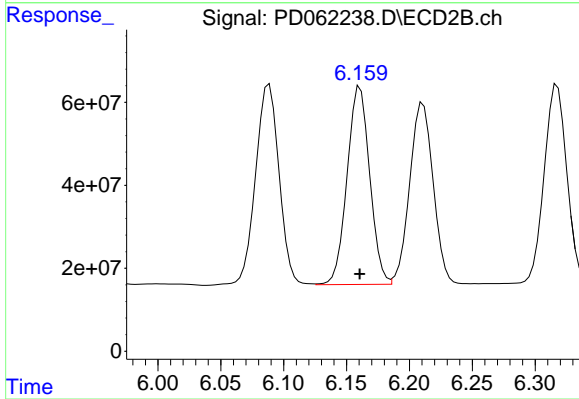
#11 alpha-Chlordane

R.T.: 5.499 min
 Delta R.T.: 0.005 min
 Response: 59568836
 Conc: 51.26 ng/ml

Instrument :
 ECD_D
 ClientSampled :
 PSTDCCC050

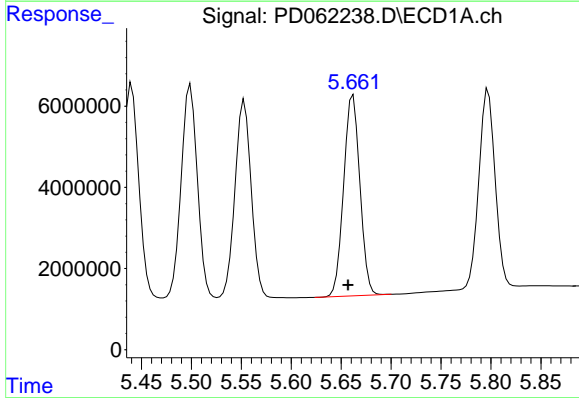
Manual Integrations
 APPROVED

Ankita
 4/23/2021 4:50:31 PM



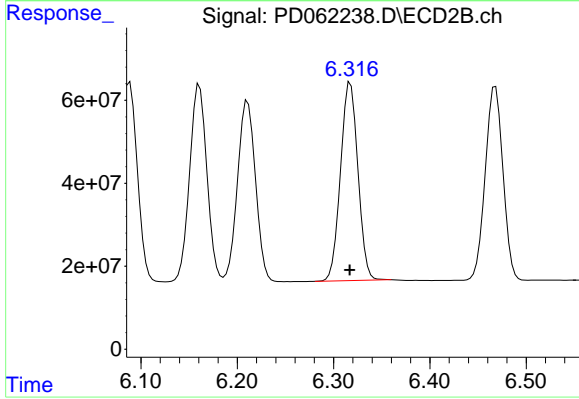
#11 alpha-Chlordane

R.T.: 6.161 min
 Delta R.T.: 0.000 min
 Response: 597983097
 Conc: 52.45 ng/ml



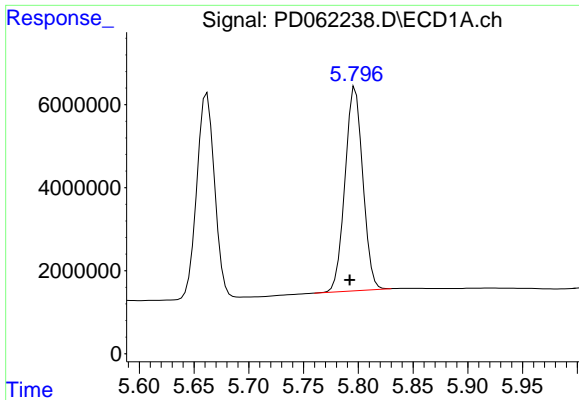
#12 4,4'-DDE

R.T.: 5.662 min
 Delta R.T.: 0.005 min
 Response: 56045727
 Conc: 49.88 ng/ml



#12 4,4'-DDE

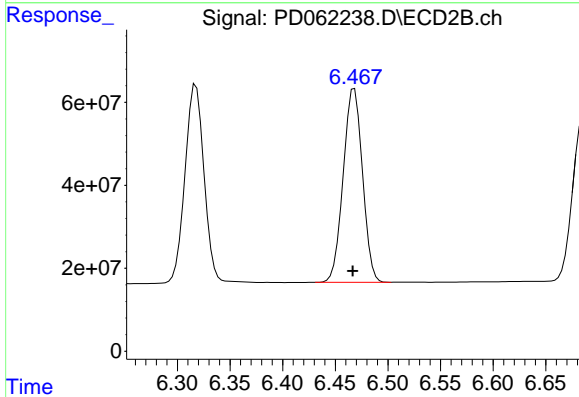
R.T.: 6.318 min
 Delta R.T.: 0.000 min
 Response: 598932349
 Conc: 51.97 ng/ml



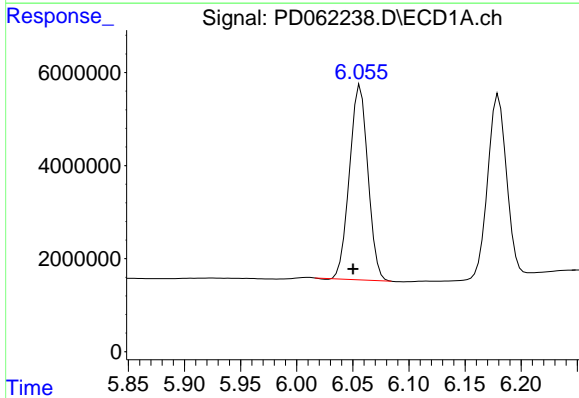
#13 Dieldrin
 R.T.: 5.797 min
 Delta R.T.: 0.005 min
 Response: 55487764
 Conc: 48.00 ng/ml

Instrument :
 ECD_D
ClientSampled :
 PSTDCCC050

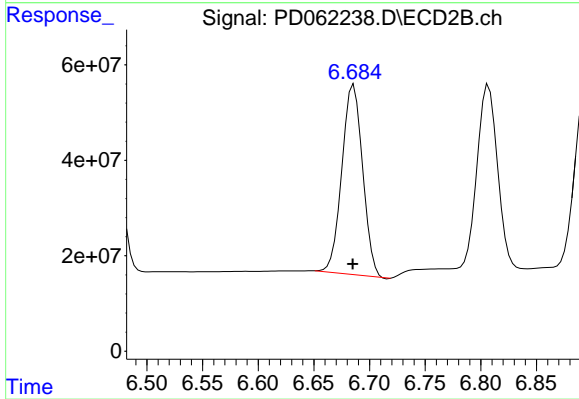
Manual Integrations
APPROVED
 Ankita
 4/23/2021 4:50:31 PM



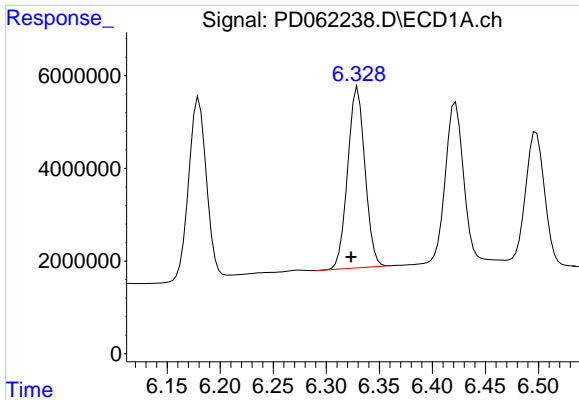
#13 Dieldrin
 R.T.: 6.468 min
 Delta R.T.: 0.002 min
 Response: 597337001
 Conc: 51.75 ng/ml



#14 Endrin
 R.T.: 6.057 min
 Delta R.T.: 0.006 min
 Response: 47691810
 Conc: 46.41 ng/ml



#14 Endrin
 R.T.: 6.686 min
 Delta R.T.: 0.000 min
 Response: 513903778
 Conc: 51.93 ng/ml

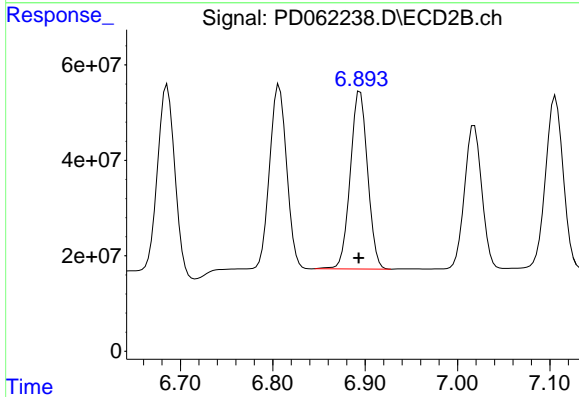


#15 Endosulfan II

R.T.: 6.330 min
 Delta R.T.: 0.006 min
 Response: 44304256
 Conc: 43.23 ng/ml

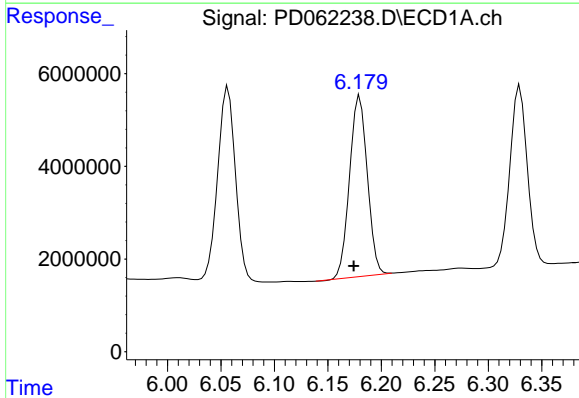
Instrument :
 ECD_D
 ClientSampleId :
 PSTDCCC050

Manual Integrations
 APPROVED
 Ankita
 4/23/2021 4:50:31 PM



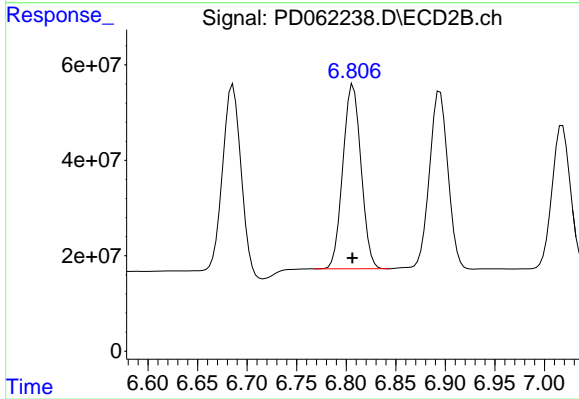
#15 Endosulfan II

R.T.: 6.895 min
 Delta R.T.: 0.002 min
 Response: 484469732
 Conc: 51.03 ng/ml



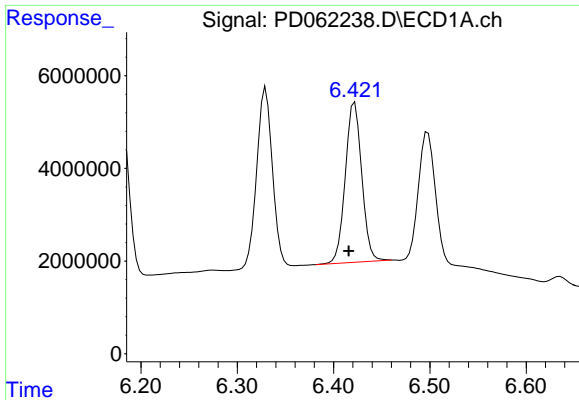
#16 4,4'-DDD

R.T.: 6.180 min
 Delta R.T.: 0.006 min
 Response: 45357387
 Conc: 48.74 ng/ml



#16 4,4'-DDD

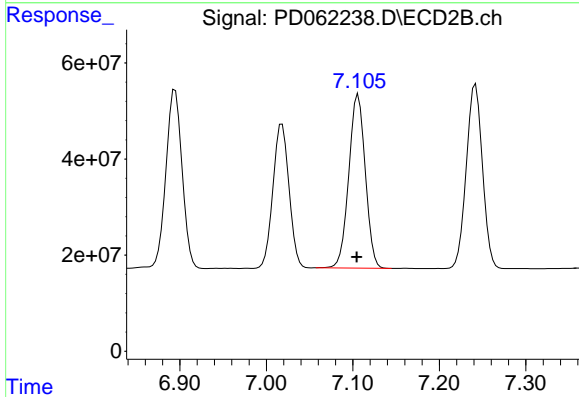
R.T.: 6.807 min
 Delta R.T.: 0.000 min
 Response: 493083384
 Conc: 52.07 ng/ml



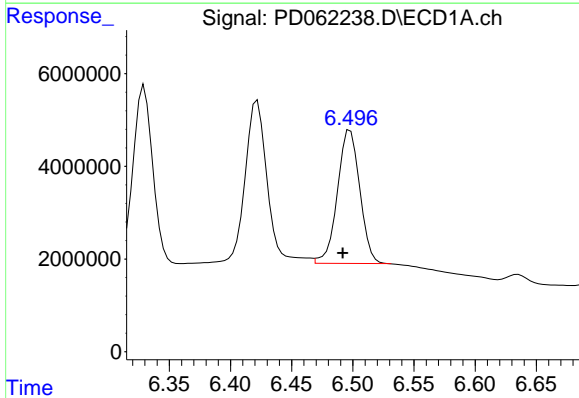
#17 4,4'-DDT
 R.T.: 6.421 min
 Delta R.T.: 0.005 min
 Response: 40820414
 Conc: 45.32 ng/ml m

Instrument :
 ECD_D
ClientSampled :
 PSTDCCC050

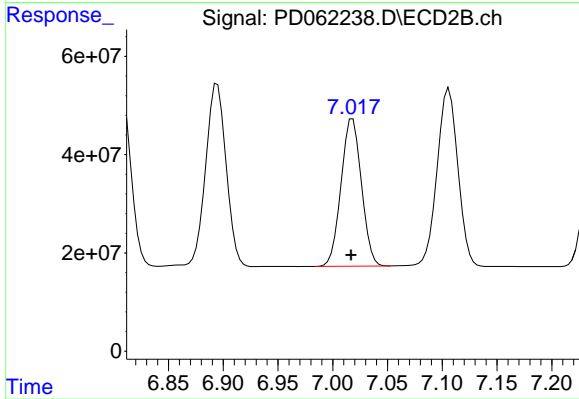
Manual Integrations
APPROVED
 Ankita
 4/23/2021 4:50:31 PM



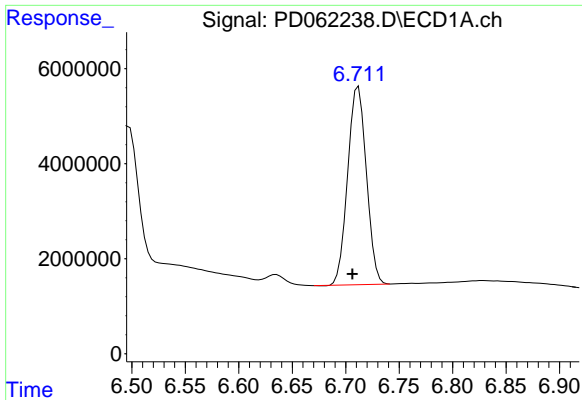
#17 4,4'-DDT
 R.T.: 7.106 min
 Delta R.T.: 0.002 min
 Response: 477925868
 Conc: 50.04 ng/ml



#18 Endrin aldehyde
 R.T.: 6.498 min
 Delta R.T.: 0.006 min
 Response: 36606063
 Conc: 42.85 ng/ml



#18 Endrin aldehyde
 R.T.: 7.018 min
 Delta R.T.: 0.001 min
 Response: 388386238
 Conc: 49.39 ng/ml



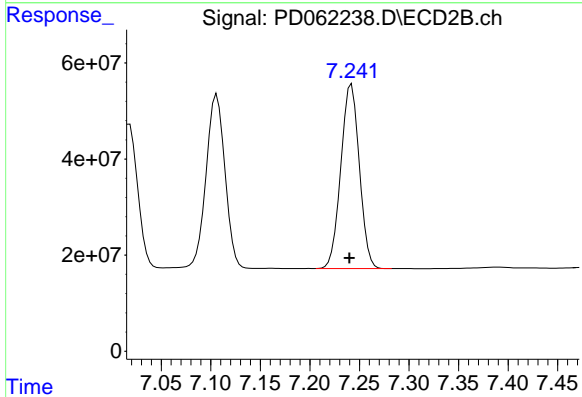
#19 Endosulfan Sulfate

R.T.: 6.712 min
 Delta R.T.: 0.006 min
 Response: 50827120
 Conc: 47.10 ng/ml

Instrument :
 ECD_D
 ClientSampleId :
 PSTDCCC050

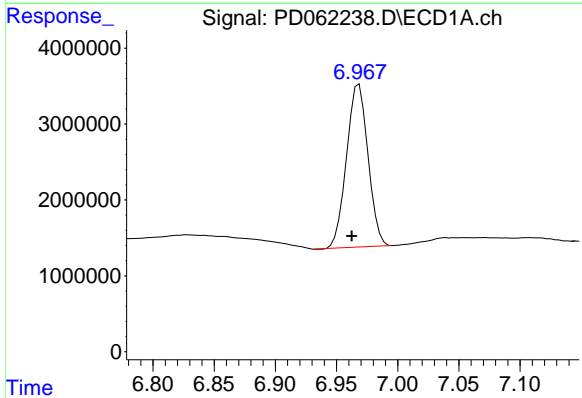
Manual Integrations
 APPROVED

Ankita
 4/23/2021 4:50:31 PM



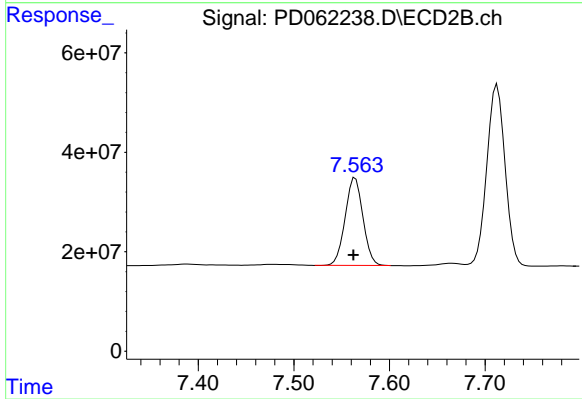
#19 Endosulfan Sulfate

R.T.: 7.242 min
 Delta R.T.: 0.002 min
 Response: 498712601
 Conc: 49.76 ng/ml



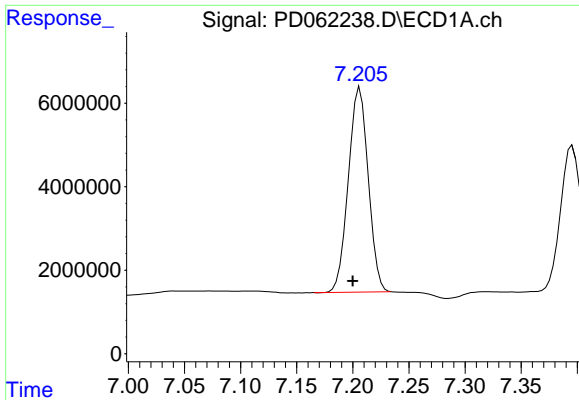
#20 Methoxychlor

R.T.: 6.968 min
 Delta R.T.: 0.006 min
 Response: 26228594
 Conc: 55.51 ng/ml



#20 Methoxychlor

R.T.: 7.564 min
 Delta R.T.: 0.002 min
 Response: 228860764
 Conc: 50.77 ng/ml



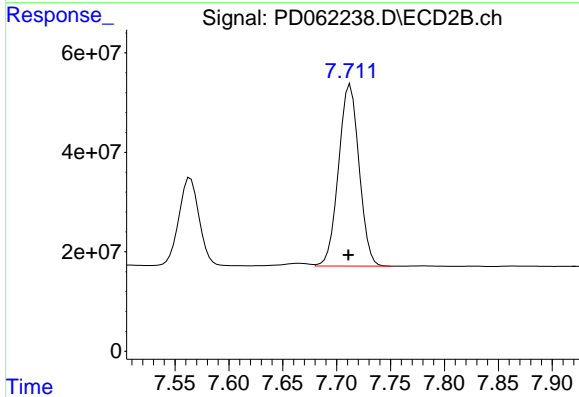
#21 Endrin ketone

R.T.: 7.206 min
 Delta R.T.: 0.007 min
 Response: 60396215
 Conc: 47.32 ng/ml

Instrument :
 ECD_D
 ClientSampled :
 PSTDCCC050

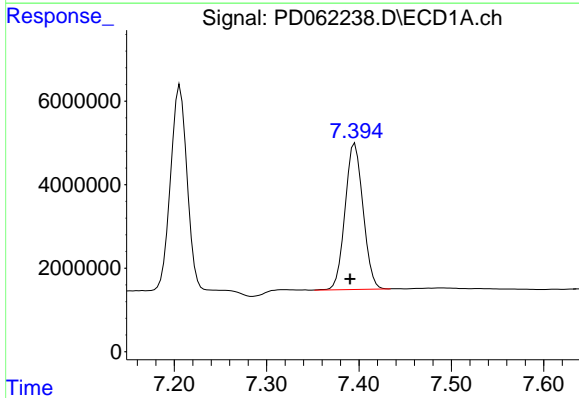
Manual Integrations
 APPROVED

Ankita
 4/23/2021 4:50:31 PM



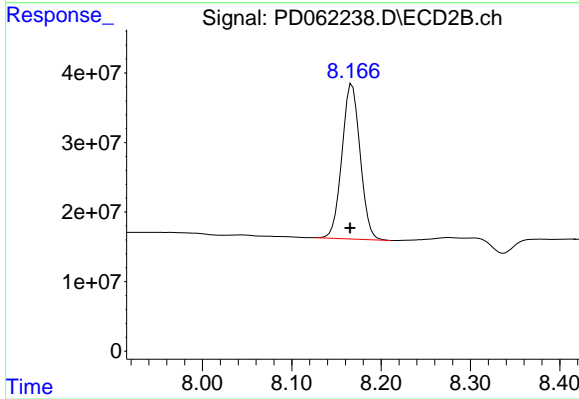
#21 Endrin ketone

R.T.: 7.713 min
 Delta R.T.: 0.002 min
 Response: 483895709
 Conc: 47.71 ng/ml



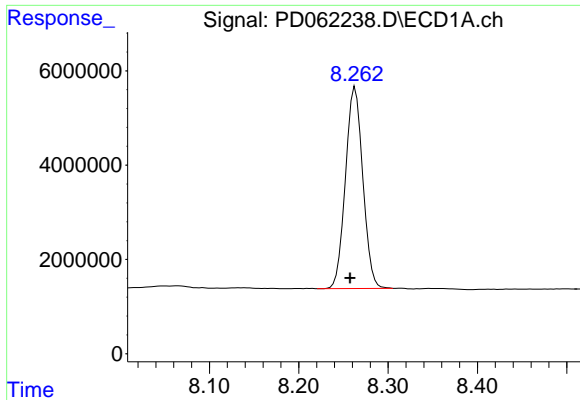
#22 Mirex

R.T.: 7.396 min
 Delta R.T.: 0.005 min
 Response: 47228984
 Conc: 57.15 ng/ml



#22 Mirex

R.T.: 8.168 min
 Delta R.T.: 0.002 min
 Response: 315024613
 Conc: 48.88 ng/ml



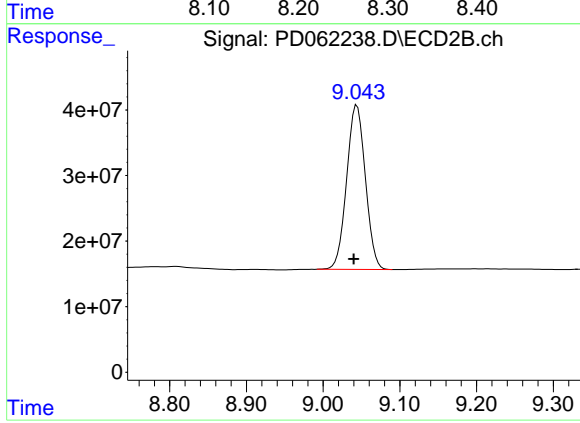
#28 Decachlorobiphenyl

R.T.: 8.263 min
Delta R.T.: 0.006 min
Response: 57667068
Conc: 46.87 ng/ml

Instrument :
ECD_D
ClientSampled :
PSTDCCC050

Manual Integrations
APPROVED

Ankita
4/23/2021 4:50:31 PM



#28 Decachlorobiphenyl

R.T.: 9.044 min
Delta R.T.: 0.004 min
Response: 428067014
Conc: 45.34 ng/ml