

Data Path : Z:\pestpcbsrv\HPCHEM1\ECD\_D\Data\PD042221\  
 Data File : PD062258.D  
 Signal(s) : Signal #1: ECD1A.ch Signal #2: ECD2B.ch  
 Acq On : 22 Apr 2021 16:08  
 Operator : AR\AJ  
 Sample : M2100-01  
 Misc :  
 ALS Vial : 22 Sample Multiplier: 1

Instrument :  
 ECD\_D  
 ClientSampleID :  
 361

Manual Integrations  
 APPROVED

Ankita  
 4/23/2021 6:56:25 PM

Integration File signal 1: autoint1.e  
 Integration File signal 2: autoint2.e  
 Quant Time: Apr 22 22:05:24 2021  
 Quant Method : Z:\pestpcbsrv\HPCHEM1\ECD\_D\Method\PD032921.M  
 Quant Title : GC Extractables  
 QLast Update : Tue Mar 30 04:47:56 2021  
 Response via : Initial Calibration  
 Integrator: ChemStation

Volume Inj. : 2 µl  
 Signal #1 Phase : ZB-MR2 Signal #2 Phase: ZB-MR1  
 Signal #1 Info : 30M x 0.32mm x0.2 Signal #2 Info : 30M x 0.32mm x 0.50µm

Compound	RT#1	RT#2	Resp#1	Resp#2	ng/ml	ng/ml
-----						
System Monitoring Compounds						
1) SA Tetrachlo...	3.490	3.981	12396749	154.1E6	14.806	17.741
28) SA Decachlor...	8.266	9.045	18749927	142.0E6	15.239	15.040
Target Compounds						
10) B gamma-Chl...	5.445	6.088	1337971	44072647	1.142m	3.718m#
11) B alpha-Chl...	5.500	6.164	4274855	129.9E6	3.679	11.395 #
12) B 4,4'-DDE	5.662	6.318	20811399	190.6E6	18.521m	16.538
16) A 4,4'-DDD	6.181	6.812	1114631	22530579	1.198m	2.379 #
17) MA 4,4'-DDT	6.421	7.107	17212730	187.0E6	19.110m	19.575
-----						

(f)=RT Delta > 1/2 Window (#)=Amounts differ by > 25% (m)=manual int.

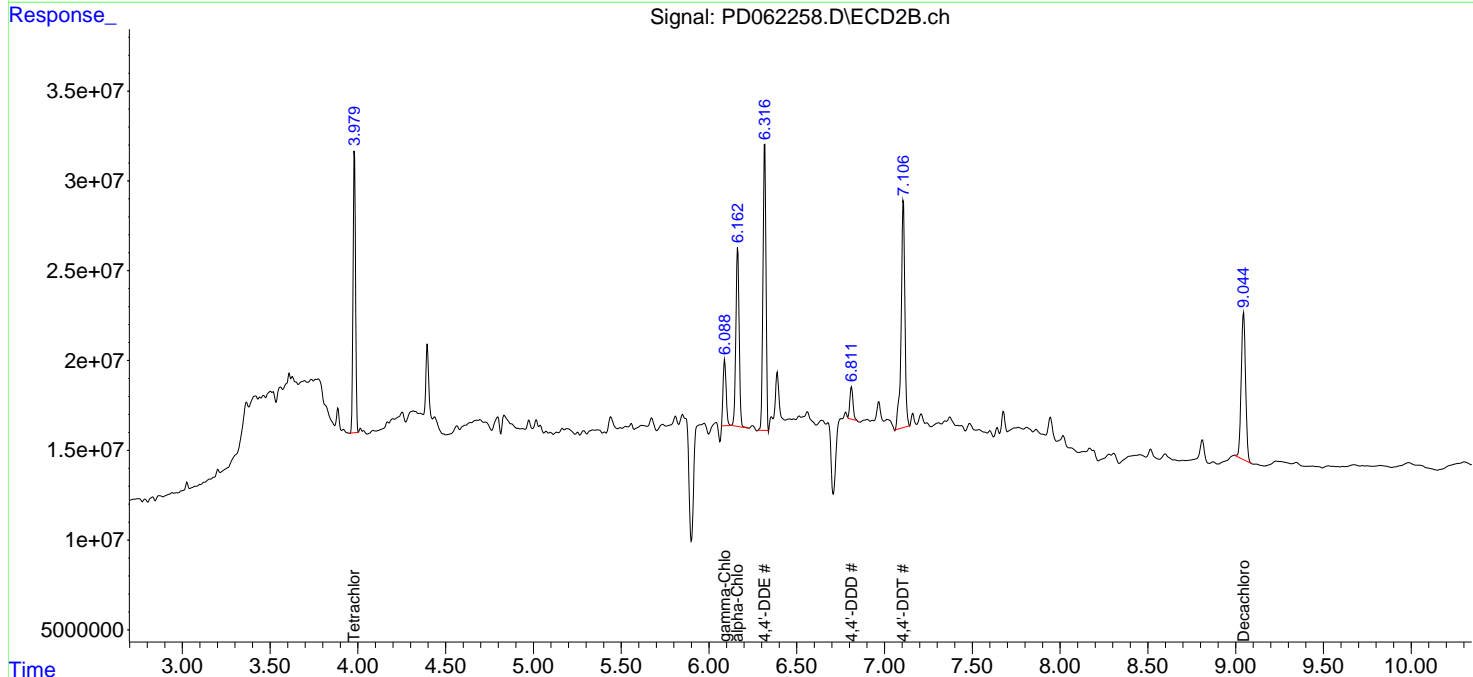
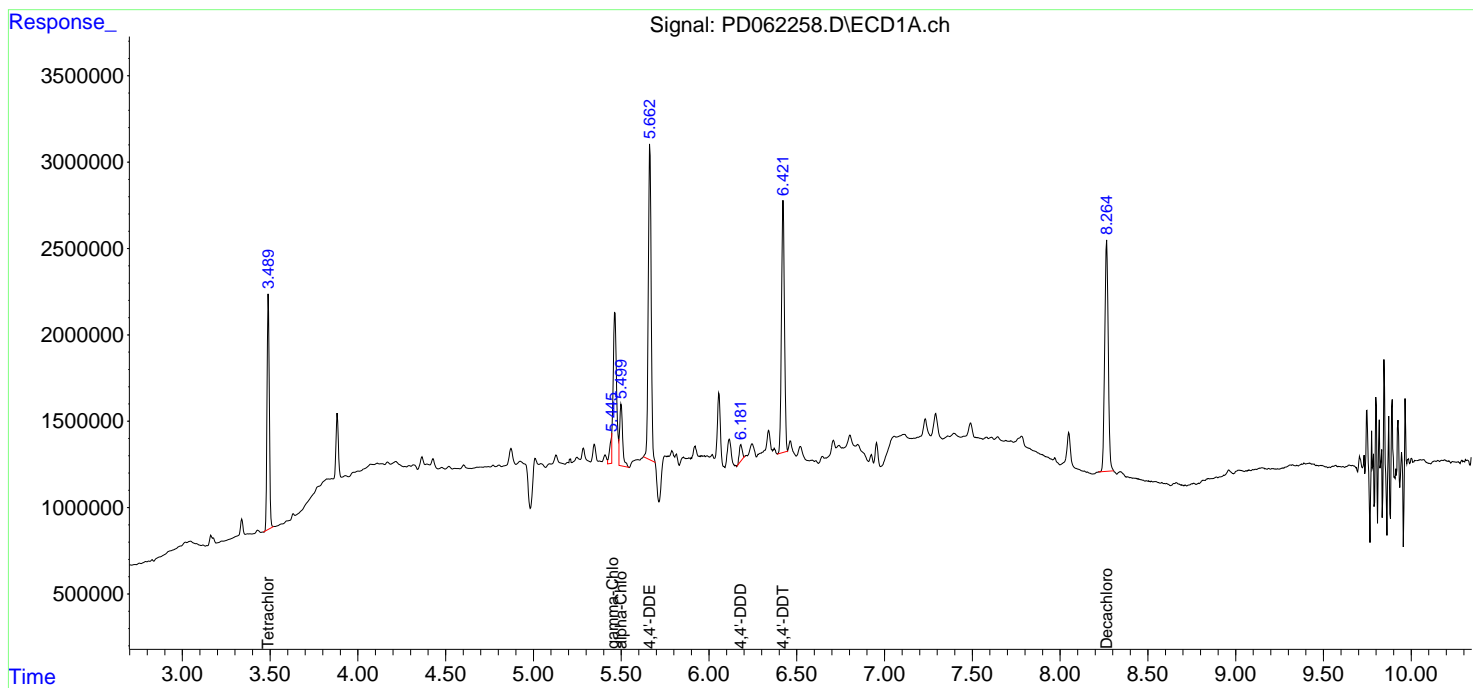
Data Path : Z:\pestpcbsrv\HPCHEM1\ECD\_D\Data\PD042221\  
 Data File : PD062258.D  
 Signal(s) : Signal #1: ECD1A.ch Signal #2: ECD2B.ch  
 Acq On : 22 Apr 2021 16:08  
 Operator : AR\AJ  
 Sample : M2100-01  
 Misc :  
 ALS Vial : 22 Sample Multiplier: 1

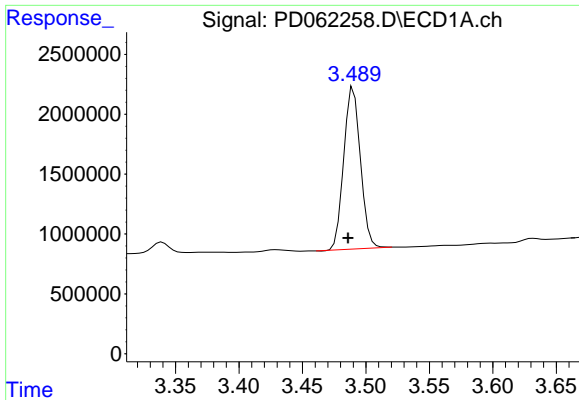
Instrument :  
 ECD\_D  
 Client Sampled :  
 361

Manual Integrations  
**APPROVED**  
 Ankita  
 4/23/2021 6:56:25 PM

Integration File signal 1: autoint1.e  
 Integration File signal 2: autoint2.e  
 Quant Time: Apr 22 22:05:24 2021  
 Quant Method : Z:\pestpcbsrv\HPCHEM1\ECD\_D\Method\PD032921.M  
 Quant Title : GC Extractables  
 QLast Update : Tue Mar 30 04:47:56 2021  
 Response via : Initial Calibration  
 Integrator: ChemStation

Volume Inj. : 2 µl  
 Signal #1 Phase : ZB-MR2 Signal #2 Phase: ZB-MR1  
 Signal #1 Info : 30M x 0.32mm x0.2 Signal #2 Info : 30M x 0.32mm x 0.50µm

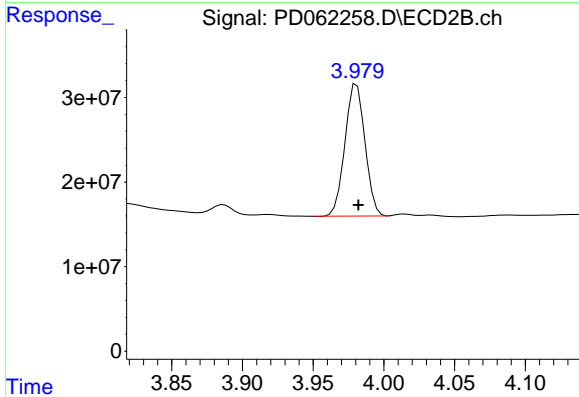




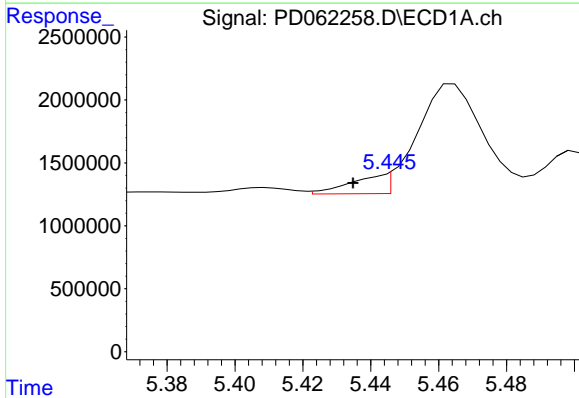
#1 Tetrachloro-m-xylene  
 R.T.: 3.490 min  
 Delta R.T.: 0.004 min  
 Response: 12396749  
 Conc: 14.81 ng/ml

Instrument :  
 ECD\_D  
 ClientSampled :  
 361

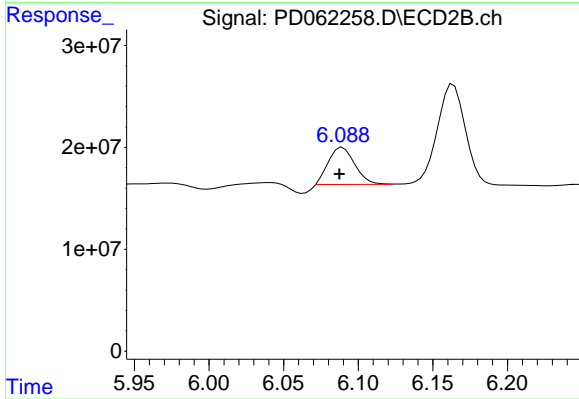
Manual Integrations  
 APPROVED  
 Ankita  
 4/23/2021 6:56:25 PM



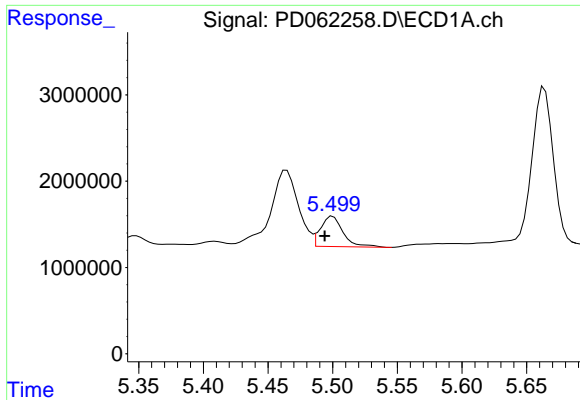
#1 Tetrachloro-m-xylene  
 R.T.: 3.981 min  
 Delta R.T.: -0.001 min  
 Response: 154147455  
 Conc: 17.74 ng/ml



#10 gamma-Chlordane  
 R.T.: 5.445 min  
 Delta R.T.: 0.010 min  
 Response: 1337971  
 Conc: 1.14 ng/ml m



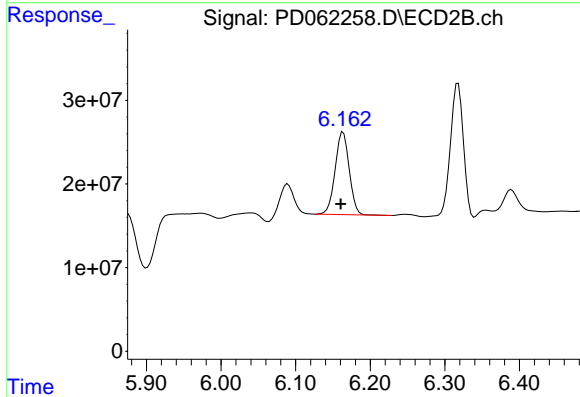
#10 gamma-Chlordane  
 R.T.: 6.088 min  
 Delta R.T.: 0.000 min  
 Response: 44072647  
 Conc: 3.72 ng/ml m



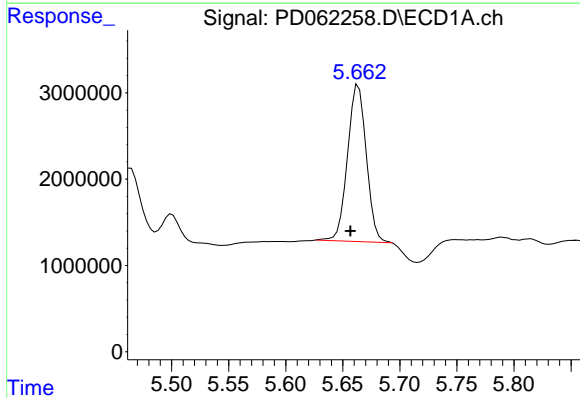
#11 alpha-Chlordane  
 R.T.: 5.500 min  
 Delta R.T.: 0.006 min  
 Response: 4274855  
 Conc: 3.68 ng/ml

Instrument :  
 ECD\_D  
 ClientSampled :  
 361

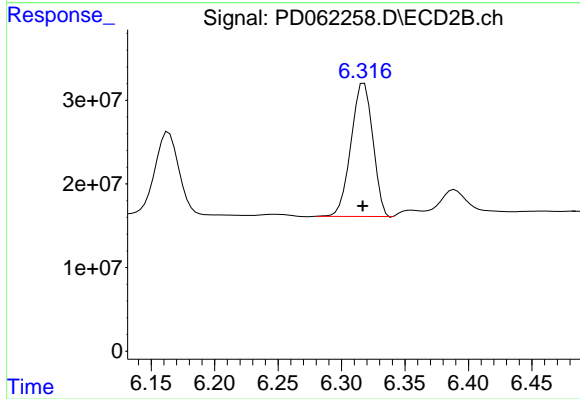
Manual Integrations  
**APPROVED**  
 Ankita  
 4/23/2021 6:56:25 PM



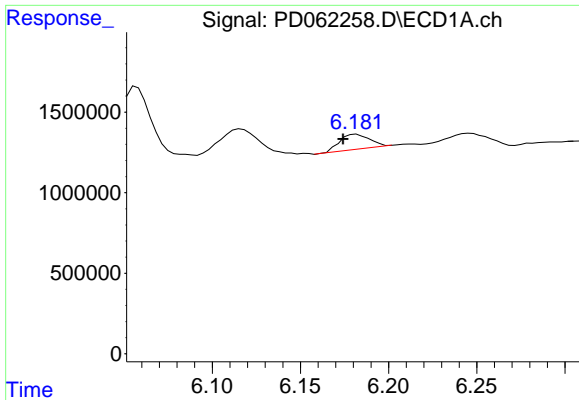
#11 alpha-Chlordane  
 R.T.: 6.164 min  
 Delta R.T.: 0.003 min  
 Response: 129906828  
 Conc: 11.40 ng/ml



#12 4,4'-DDE  
 R.T.: 5.662 min  
 Delta R.T.: 0.006 min  
 Response: 20811399  
 Conc: 18.52 ng/ml m



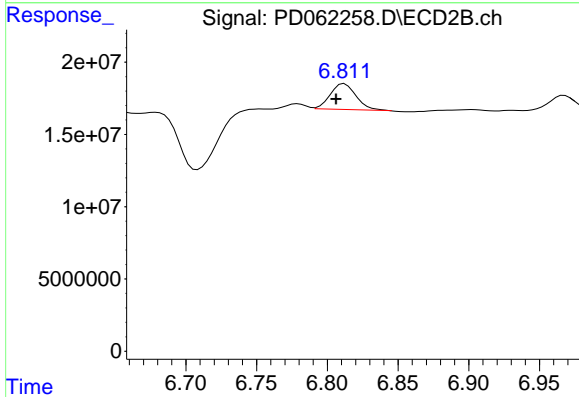
#12 4,4'-DDE  
 R.T.: 6.318 min  
 Delta R.T.: 0.001 min  
 Response: 190583379  
 Conc: 16.54 ng/ml



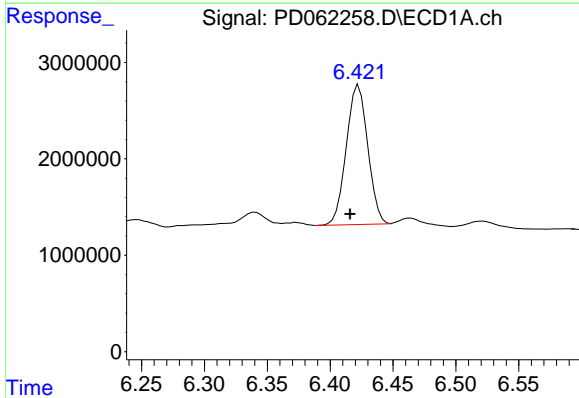
#16 4,4'-DDD  
 R.T.: 6.181 min  
 Delta R.T.: 0.006 min  
 Response: 1114631  
 Conc: 1.20 ng/ml m

**Instrument :**  
 ECD\_D  
**ClientSampled :**  
 361

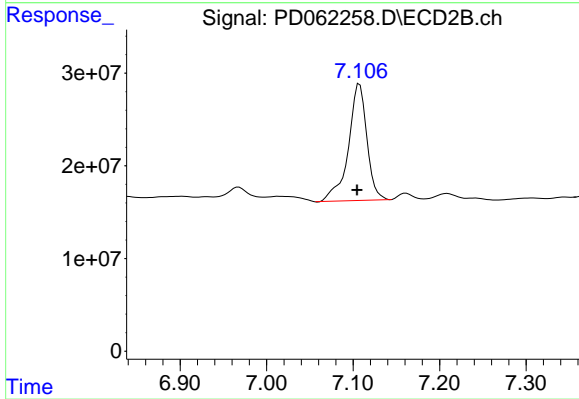
**Manual Integrations**  
**APPROVED**  
 Ankita  
 4/23/2021 6:56:25 PM



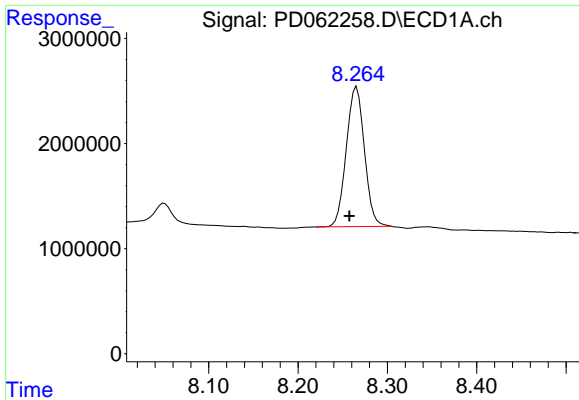
#16 4,4'-DDD  
 R.T.: 6.812 min  
 Delta R.T.: 0.006 min  
 Response: 22530579  
 Conc: 2.38 ng/ml



#17 4,4'-DDT  
 R.T.: 6.421 min  
 Delta R.T.: 0.006 min  
 Response: 17212730  
 Conc: 19.11 ng/ml m



#17 4,4'-DDT  
 R.T.: 7.107 min  
 Delta R.T.: 0.003 min  
 Response: 186975767  
 Conc: 19.58 ng/ml



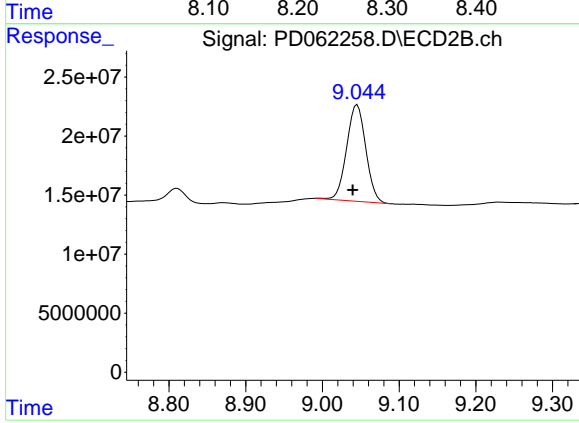
#28 Decachlorobiphenyl

R.T.: 8.266 min  
Delta R.T.: 0.008 min  
Response: 18749927  
Conc: 15.24 ng/ml

Instrument :  
ECD\_D  
ClientSampled :  
361

Manual Integrations  
APPROVED

Ankita  
4/23/2021 6:56:25 PM



#28 Decachlorobiphenyl

R.T.: 9.045 min  
Delta R.T.: 0.006 min  
Response: 141983077  
Conc: 15.04 ng/ml