

Data Path : Z:\pestpcbsrv\HPCHEM1\ECD_D\Data\PD042221\
 Data File : PD062273.D
 Signal(s) : Signal #1: ECD1A.ch Signal #2: ECD2B.ch
 Acq On : 22 Apr 2021 20:07
 Operator : AR\AJ
 Sample : PB135914BS
 Misc :
 ALS Vial : 34 Sample Multiplier: 1

Instrument :
 ECD_D
 ClientSampleId :
 PB135914BS

Integration File signal 1: autoint1.e
 Integration File signal 2: autoint2.e
 Quant Time: Apr 22 22:09:30 2021
 Quant Method : Z:\pestpcbsrv\HPCHEM1\ECD_D\Method\PD032921.M
 Quant Title : GC Extractables
 QLast Update : Tue Mar 30 04:47:56 2021
 Response via : Initial Calibration
 Integrator: ChemStation

Volume Inj. : 2 µl
 Signal #1 Phase : ZB-MR2 Signal #2 Phase: ZB-MR1
 Signal #1 Info : 30M x 0.32mm x0.2 Signal #2 Info : 30M x 0.32mm x 0.50µm

Compound	RT#1	RT#2	Resp#1	Resp#2	ng/ml	ng/ml

System Monitoring Compounds						
1) SA Tetrachlo...	3.483	3.980	18264365	227.8E6	21.814	26.214
28) SA Decachlor...	8.256	9.040	22108963	169.8E6	17.969	17.983
Target Compounds						
12) B 4,4'-DDE	5.654	6.315	10381258	111.6E6	9.239	9.685
16) A 4,4'-DDD	6.173	6.806	637353	24774074	0.685	2.616 #
17) MA 4,4'-DDT	6.413	7.104	6935481	67474885	7.700	7.064

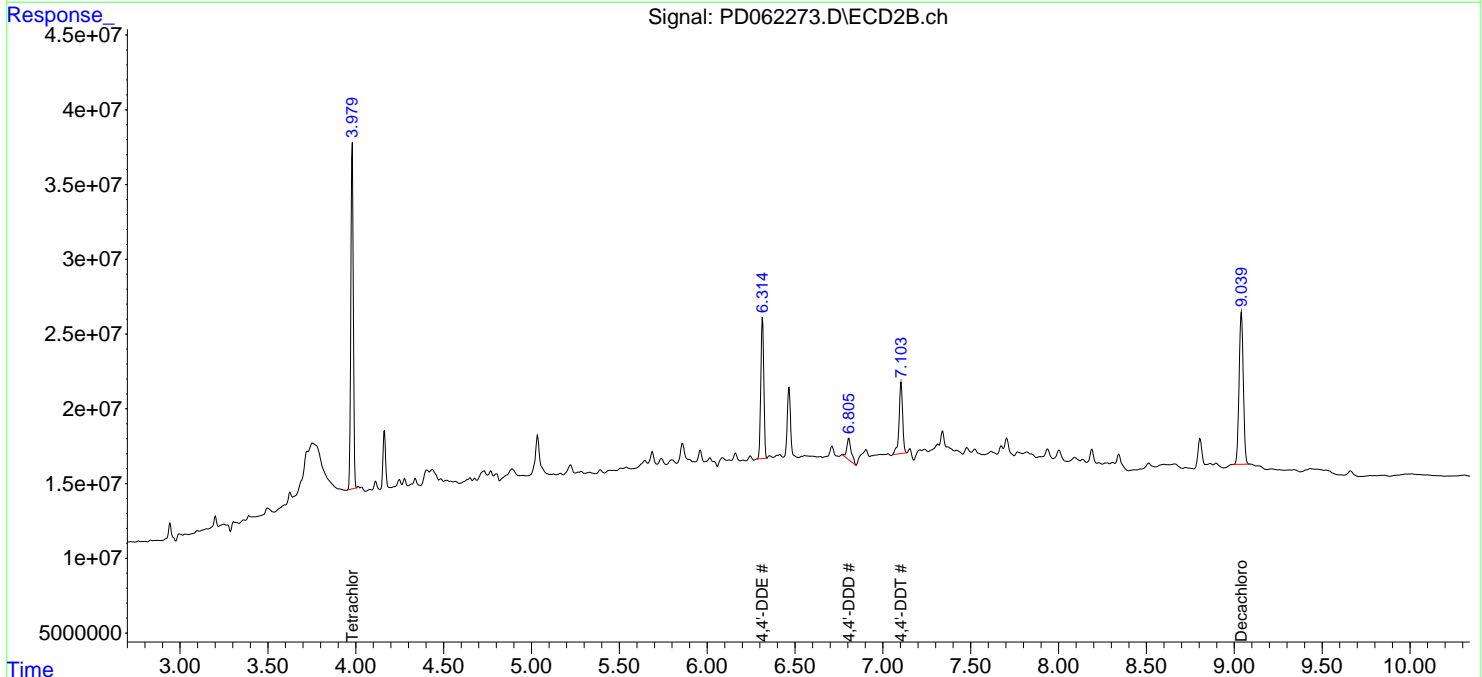
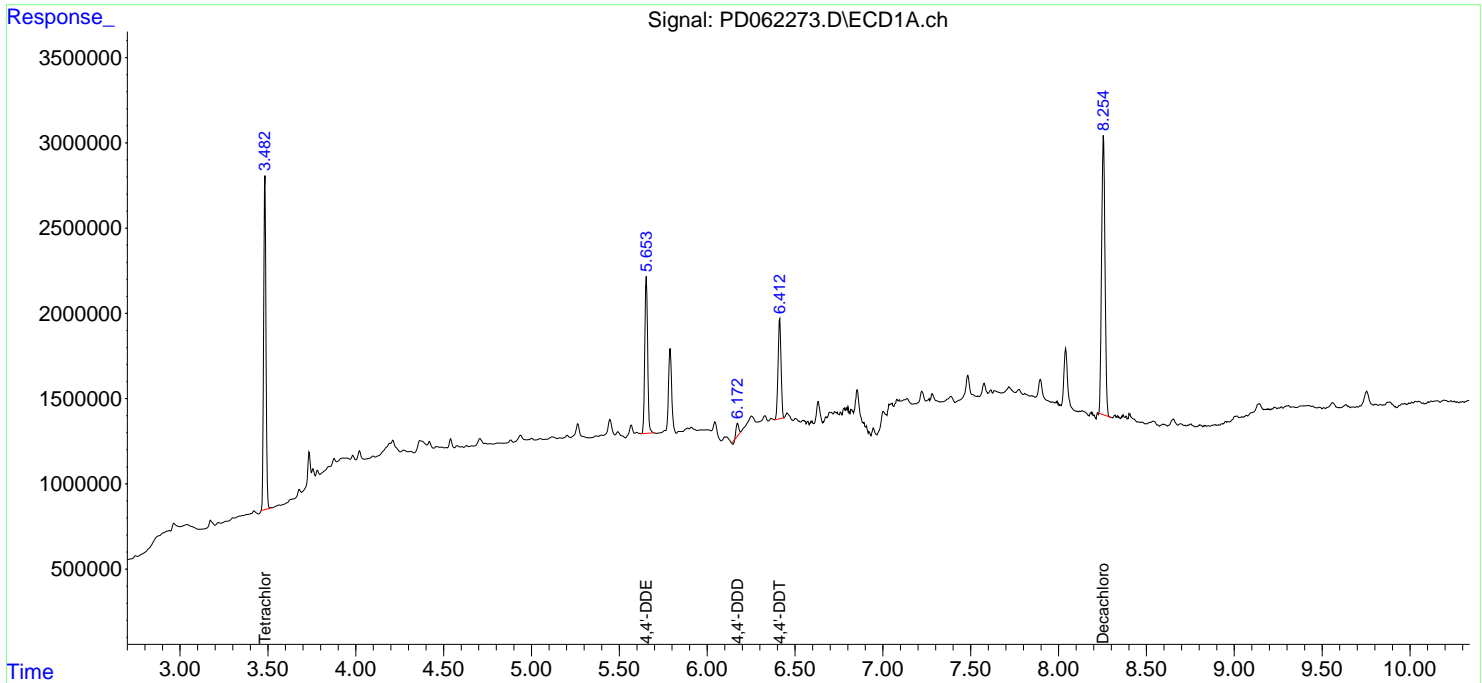
(f)=RT Delta > 1/2 Window (#)=Amounts differ by > 25% (m)=manual int.

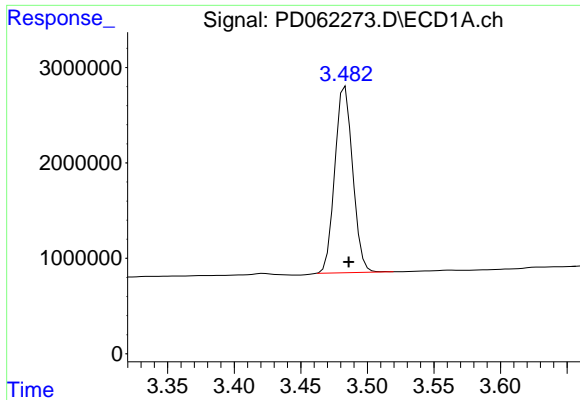
Data Path : Z:\pestpcbsrv\HPCHEM1\ECD_D\Data\PD042221\
 Data File : PD062273.D
 Signal(s) : Signal #1: ECD1A.ch Signal #2: ECD2B.ch
 Acq On : 22 Apr 2021 20:07
 Operator : AR\AJ
 Sample : PB135914BS
 Misc :
 ALS Vial : 34 Sample Multiplier: 1

Instrument :
 ECD_D
ClientSampled :
 PB135914BS

Integration File signal 1: autoint1.e
 Integration File signal 2: autoint2.e
 Quant Time: Apr 22 22:09:30 2021
 Quant Method : Z:\pestpcbsrv\HPCHEM1\ECD_D\Method\PD032921.M
 Quant Title : GC Extractables
 QLast Update : Tue Mar 30 04:47:56 2021
 Response via : Initial Calibration
 Integrator: ChemStation

Volume Inj. : 2 µl
 Signal #1 Phase : ZB-MR2 Signal #2 Phase: ZB-MR1
 Signal #1 Info : 30M x 0.32mm x0.2 Signal #2 Info : 30M x 0.32mm x 0.50µm

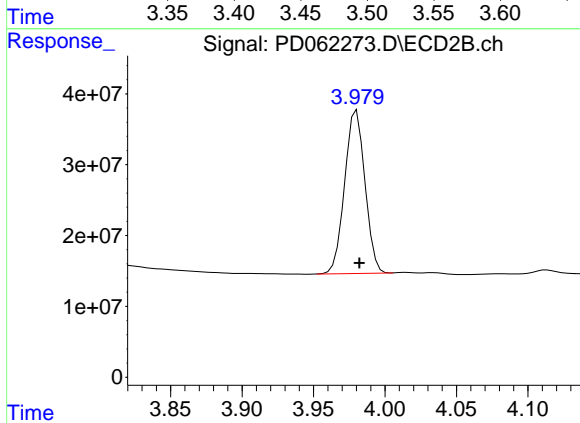




#1 Tetrachloro-m-xylene

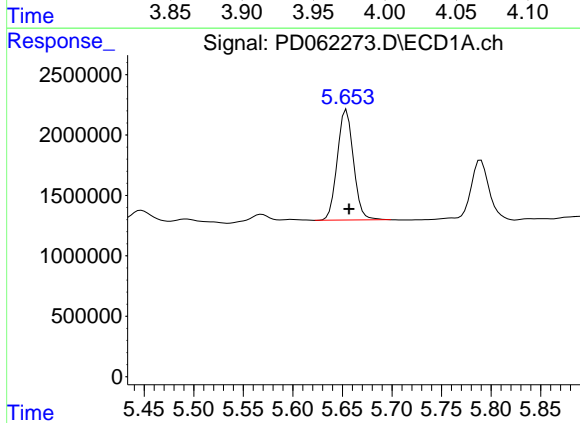
R.T.: 3.483 min
 Delta R.T.: -0.003 min
 Response: 18264365
 Conc: 21.81 ng/ml

Instrument :
 ECD_D
 ClientSampleId :
 PB135914BS



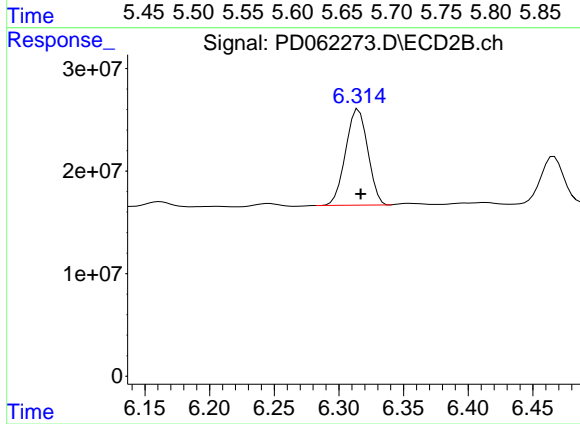
#1 Tetrachloro-m-xylene

R.T.: 3.980 min
 Delta R.T.: -0.002 min
 Response: 227769530
 Conc: 26.21 ng/ml



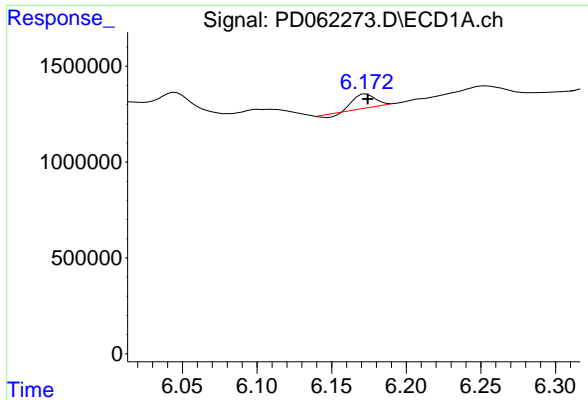
#12 4,4'-DDE

R.T.: 5.654 min
 Delta R.T.: -0.003 min
 Response: 10381258
 Conc: 9.24 ng/ml



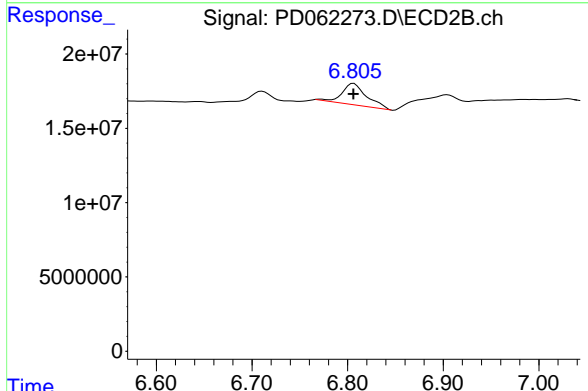
#12 4,4'-DDE

R.T.: 6.315 min
 Delta R.T.: -0.001 min
 Response: 111616239
 Conc: 9.69 ng/ml

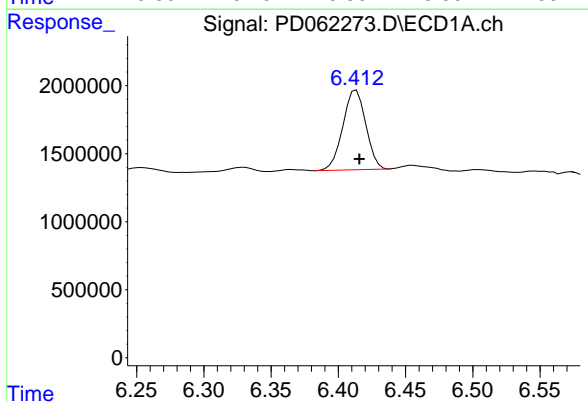


#16 4,4'-DDD
 R.T.: 6.173 min
 Delta R.T.: 0.000 min
 Response: 637353
 Conc: 0.68 ng/ml

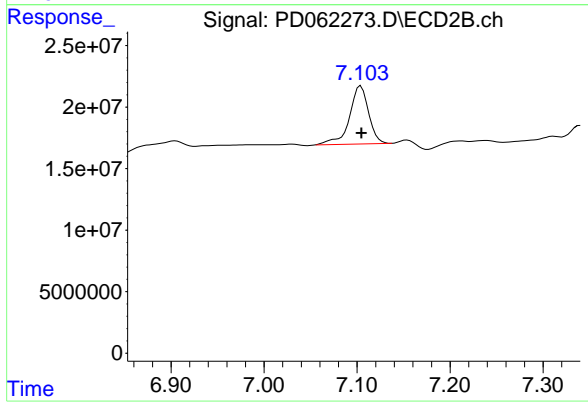
Instrument :
 ECD_D
 ClientSampleId :
 PB135914BS



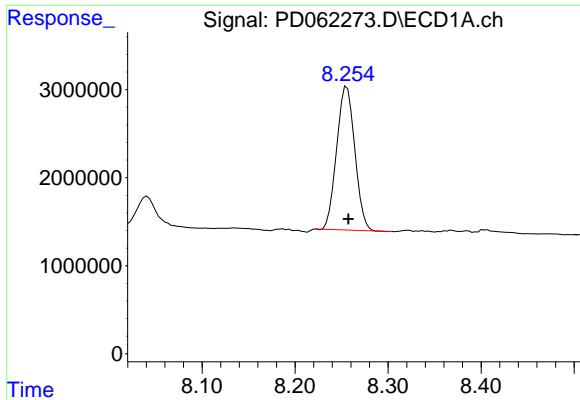
#16 4,4'-DDD
 R.T.: 6.806 min
 Delta R.T.: 0.000 min
 Response: 24774074
 Conc: 2.62 ng/ml



#17 4,4'-DDT
 R.T.: 6.413 min
 Delta R.T.: -0.002 min
 Response: 6935481
 Conc: 7.70 ng/ml



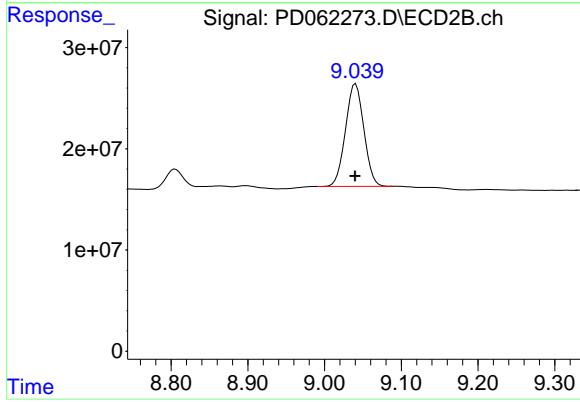
#17 4,4'-DDT
 R.T.: 7.104 min
 Delta R.T.: 0.000 min
 Response: 67474885
 Conc: 7.06 ng/ml



#28 Decachlorobiphenyl

R.T.: 8.256 min
Delta R.T.: -0.002 min
Response: 22108963
Conc: 17.97 ng/ml

Instrument :
ECD_D
ClientSampled :
PB135914BS



#28 Decachlorobiphenyl

R.T.: 9.040 min
Delta R.T.: 0.000 min
Response: 169767178
Conc: 17.98 ng/ml