

Data Path : Z:\pestpcbsrv\HPCHEM1\ECD_D\Data\PD042221\
 Data File : PD062275.D
 Signal(s) : Signal #1: ECD1A.ch Signal #2: ECD2B.ch
 Acq On : 22 Apr 2021 20:35
 Operator : AR\AJ
 Sample : M2106-10
 Misc :
 ALS Vial : 36 Sample Multiplier: 1

Instrument :
 ECD_D
ClientSampled :
 SB-25-0-2.0

Manual Integrations
APPROVED
 Ankita
 4/23/2021 4:50:16 PM

Integration File signal 1: autoint1.e
 Integration File signal 2: autoint2.e
 Quant Time: Apr 22 22:09:58 2021
 Quant Method : Z:\pestpcbsrv\HPCHEM1\ECD_D\Method\PD032921.M
 Quant Title : GC Extractables
 QLast Update : Tue Mar 30 04:47:56 2021
 Response via : Initial Calibration
 Integrator: ChemStation

Volume Inj. : 2 µl
 Signal #1 Phase : ZB-MR2 Signal #2 Phase: ZB-MR1
 Signal #1 Info : 30M x 0.32mm x0.2 Signal #2 Info : 30M x 0.32mm x 0.50µm

Compound	RT#1	RT#2	Resp#1	Resp#2	ng/ml	ng/ml

System Monitoring Compounds						
1) SA Tetrachlo...	3.484	3.981	11352151	144.4E6	13.558	16.620
28) SA Decachlor...	8.256	9.042	15128041	102.3E6	12.295	10.834
Target Compounds						
12) B 4,4'-DDE	5.653	6.316	6898092	92637126	6.139m	8.039 #

(f)=RT Delta > 1/2 Window (#)=Amounts differ by > 25% (m)=manual int.

Data Path : Z:\pestpcbsrv\HPCHEM1\ECD_D\Data\PD042221\
 Data File : PD062275.D
 Signal(s) : Signal #1: ECD1A.ch Signal #2: ECD2B.ch
 Acq On : 22 Apr 2021 20:35
 Operator : AR\AJ
 Sample : M2106-10
 Misc :
 ALS Vial : 36 Sample Multiplier: 1

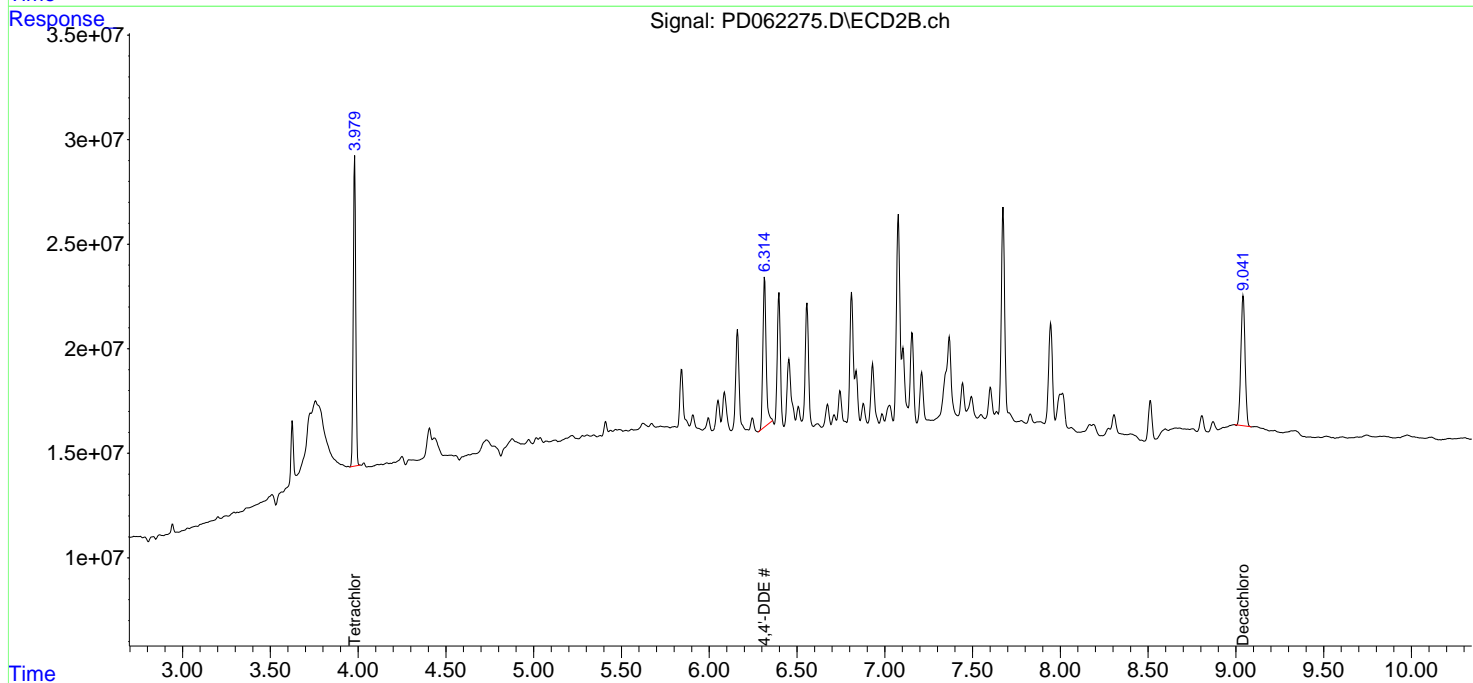
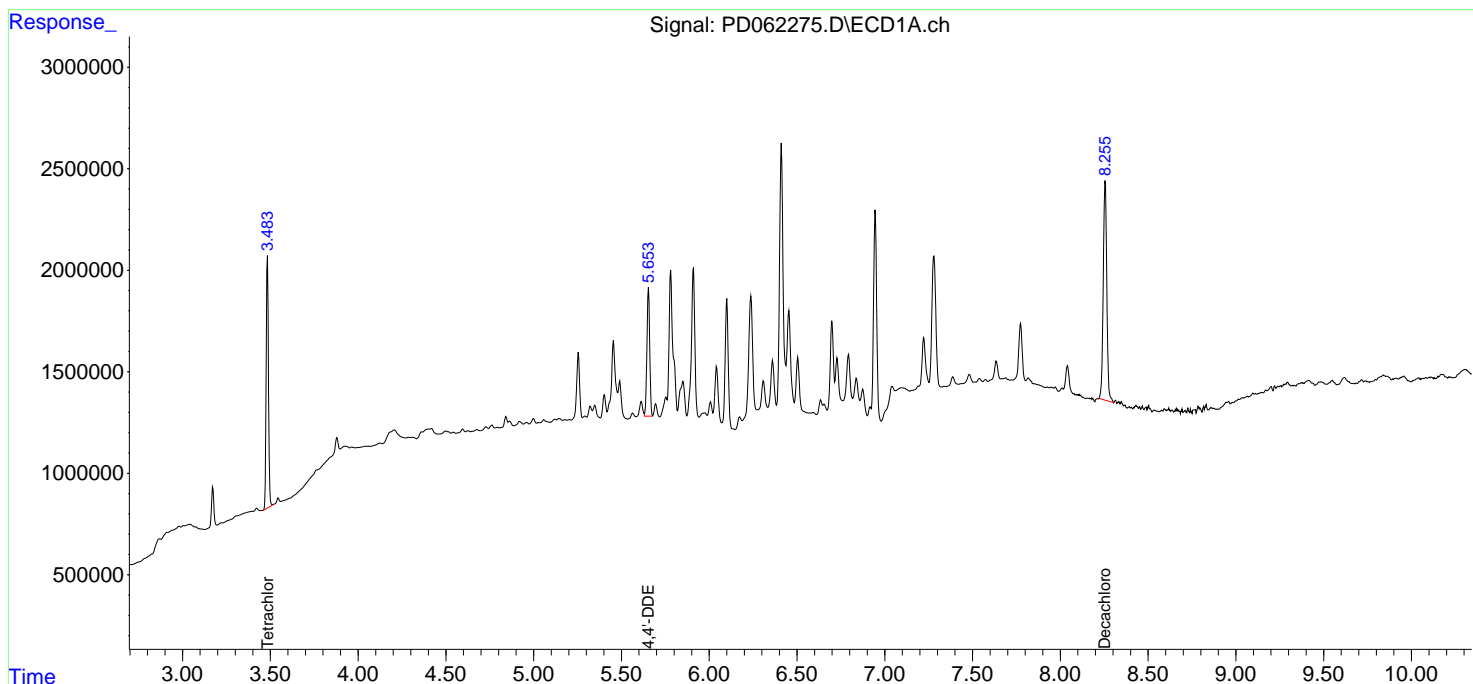
Instrument :
 ECD_D
 ClientSampleID :
 SB-25-0-2.0

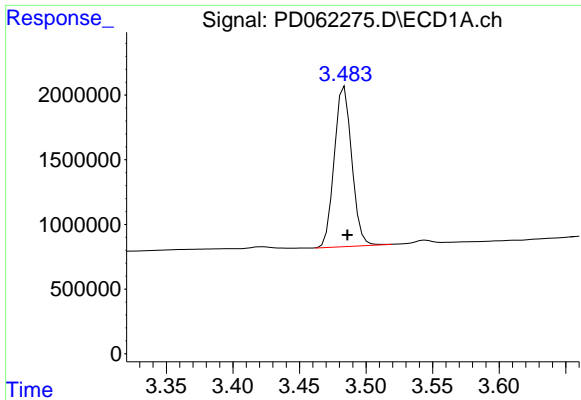
Manual Integrations
 APPROVED

Ankita
 4/23/2021 4:50:16 PM

Integration File signal 1: autoint1.e
 Integration File signal 2: autoint2.e
 Quant Time: Apr 22 22:09:58 2021
 Quant Method : Z:\pestpcbsrv\HPCHEM1\ECD_D\Method\PD032921.M
 Quant Title : GC Extractables
 QLast Update : Tue Mar 30 04:47:56 2021
 Response via : Initial Calibration
 Integrator: ChemStation

Volume Inj. : 2 µl
 Signal #1 Phase : ZB-MR2 Signal #2 Phase: ZB-MR1
 Signal #1 Info : 30M x 0.32mm x0.2 Signal #2 Info : 30M x 0.32mm x 0.50µm

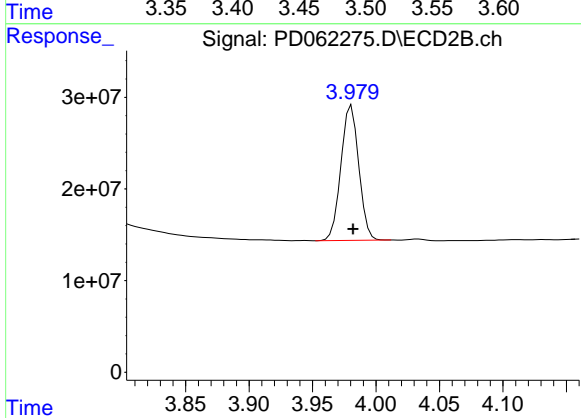




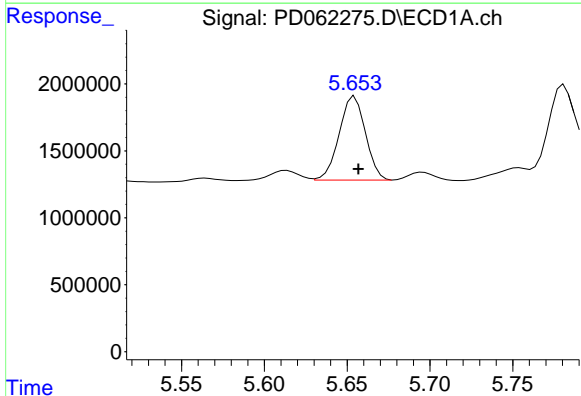
#1 Tetrachloro-m-xylene
 R.T.: 3.484 min
 Delta R.T.: -0.002 min
 Response: 11352151
 Conc: 13.56 ng/ml

Instrument :
 ECD_D
 ClientSampleId :
 SB-25-0-2.0

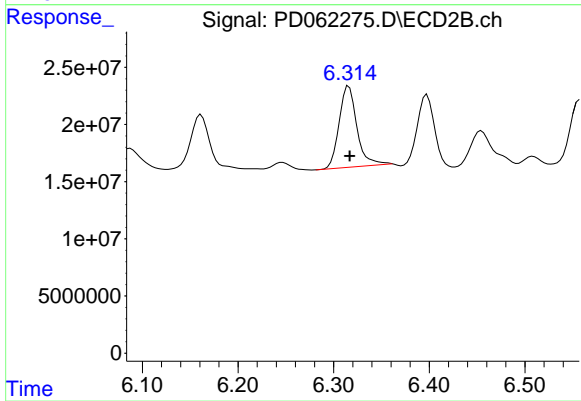
Manual Integrations
 APPROVED
 Ankita
 4/23/2021 4:50:16 PM



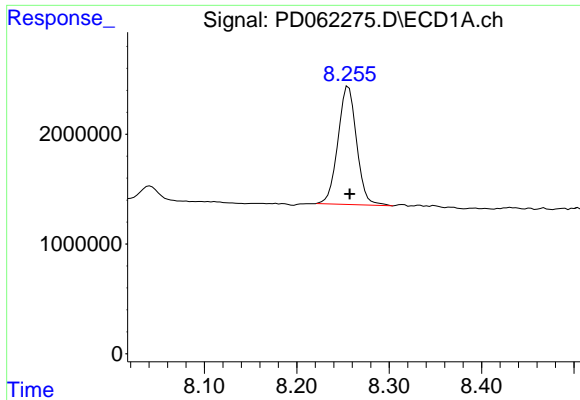
#1 Tetrachloro-m-xylene
 R.T.: 3.981 min
 Delta R.T.: -0.001 min
 Response: 144408939
 Conc: 16.62 ng/ml



#12 4,4'-DDE
 R.T.: 5.653 min
 Delta R.T.: -0.004 min
 Response: 6898092
 Conc: 6.14 ng/ml m



#12 4,4'-DDE
 R.T.: 6.316 min
 Delta R.T.: 0.000 min
 Response: 92637126
 Conc: 8.04 ng/ml



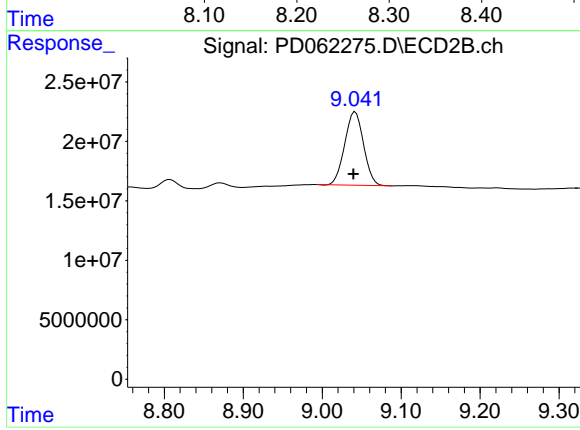
#28 Decachlorobiphenyl

R.T.: 8.256 min
Delta R.T.: -0.001 min
Response: 15128041
Conc: 12.29 ng/ml

Instrument :
ECD_D
ClientSampleId :
SB-25-0-2.0

Manual Integrations
APPROVED

Ankita
4/23/2021 4:50:16 PM



#28 Decachlorobiphenyl

R.T.: 9.042 min
Delta R.T.: 0.002 min
Response: 102282217
Conc: 10.83 ng/ml