

Data Path : Z:\pestpcbsrv\HPCHEM1\ECD_D\Data\PD042221\
 Data File : PD062289.D
 Signal(s) : Signal #1: ECD1A.ch Signal #2: ECD2B.ch
 Acq On : 22 Apr 2021 23:51
 Operator : AR\AJ
 Sample : PSTDCCC050
 Misc :
 ALS Vial : 4 Sample Multiplier: 1

Instrument :
 ECD_D
ClientSampled :
 PSTDCCC050

Manual Integrations
APPROVED
 Ankita
 4/23/2021 4:50:11 PM

Integration File signal 1: autoint1.e
 Integration File signal 2: autoint2.e
 Quant Time: Apr 23 08:17:34 2021
 Quant Method : Z:\pestpcbsrv\HPCHEM1\ECD_D\Method\PD032921.M
 Quant Title : GC Extractables
 QLast Update : Tue Mar 30 04:47:56 2021
 Response via : Initial Calibration
 Integrator: ChemStation

Volume Inj. : 2 µl
 Signal #1 Phase : ZB-MR2 Signal #2 Phase: ZB-MR1
 Signal #1 Info : 30M x 0.32mm x0.2 Signal #2 Info : 30M x 0.32mm x 0.50µm

	Compound	RT#1	RT#2	Resp#1	Resp#2	ng/ml	ng/ml

System Monitoring Compounds							
1)	SA Tetrachlo...	3.487	3.983	31097366	186.9E6	37.140	21.512 #
28)	SA Decachlor...	8.261	9.043	25099593	271.1E6	20.399	28.714 #
Target Compounds							
2)	A alpha-BHC	3.926	4.372	36891901	269.2E6	29.209	20.017 #
3)	MA gamma-BHC...	4.211	4.656	39967492	250.1E6	33.663	20.053 #
4)	MA Heptachlor	4.514	5.165	35908338	233.8E6	30.845	17.944 #
5)	MB Aldrin	4.764	5.469	33718458	220.8E6	28.095	17.740 #
6)	B beta-BHC	4.461	4.826	20532983	100.6E6	37.653	19.471 #
7)	B delta-BHC	4.667	5.042	34138365	295.0E6	28.102	22.300
8)	B Heptachlo...	5.208	5.855	30136608	206.9E6	26.289	17.476 #
9)	A Endosulfan I	5.549	6.212	33266893	177.1E6	30.295	16.339 #
10)	B gamma-Chl...	5.436	6.089	27912410	187.7E6	23.829	15.829 #
11)	B alpha-Chl...	5.494	6.162	32618290	190.4E6	28.070	16.700 #
12)	B 4,4'-DDE	5.657	6.319	29271003	185.0E6	26.049	16.057 #
13)	MA Dieldrin	5.793	6.469	30752247	186.4E6	26.605	16.150 #
14)	MA Endrin	6.052	6.687	26221994	143.9E6	25.520	14.545 #
15)	B Endosulfa...	6.325	6.896	24072960	158.2E6	23.488	16.657 #
16)	A 4,4'-DDD	6.176	6.809	32456004	182.0E6	34.875	19.220 #
17)	MA 4,4'-DDT	6.418	7.107	14421637	113.1E6	16.011	11.838 #
18)	B Endrin al...	6.493	7.020	23268270	130.7E6	27.235	16.617 #
19)	B Endosulfa...	6.707	7.243	26405156	167.9E6	24.471	16.757 #
20)	A Methoxychlor	6.963	7.567	4772009	30897901	10.099	6.854 #
21)	B Endrin ke...	7.202	7.714	27482289	186.5E6	21.534	18.392
22)	Mirex	7.393	8.168	21258361	141.1E6	22.251	21.898

(f)=RT Delta > 1/2 Window (#)=Amounts differ by > 25% (m)=manual int.

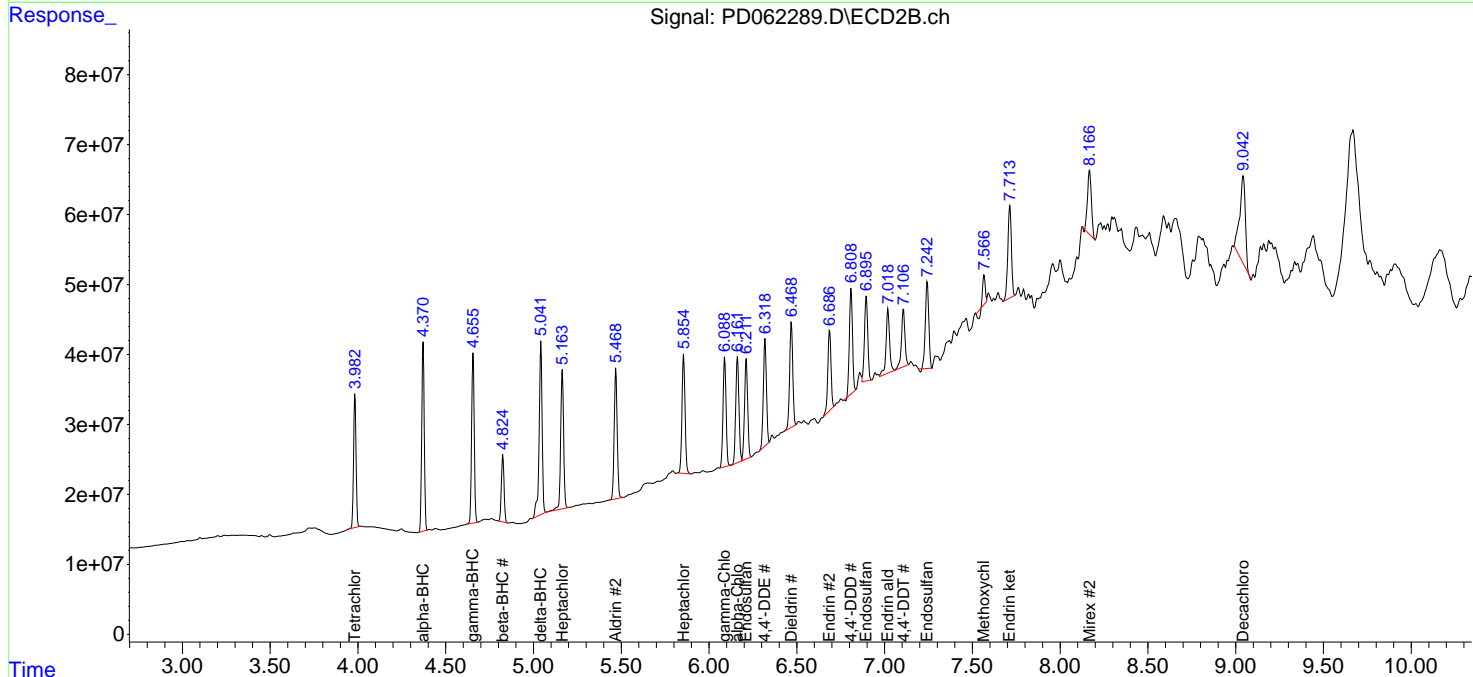
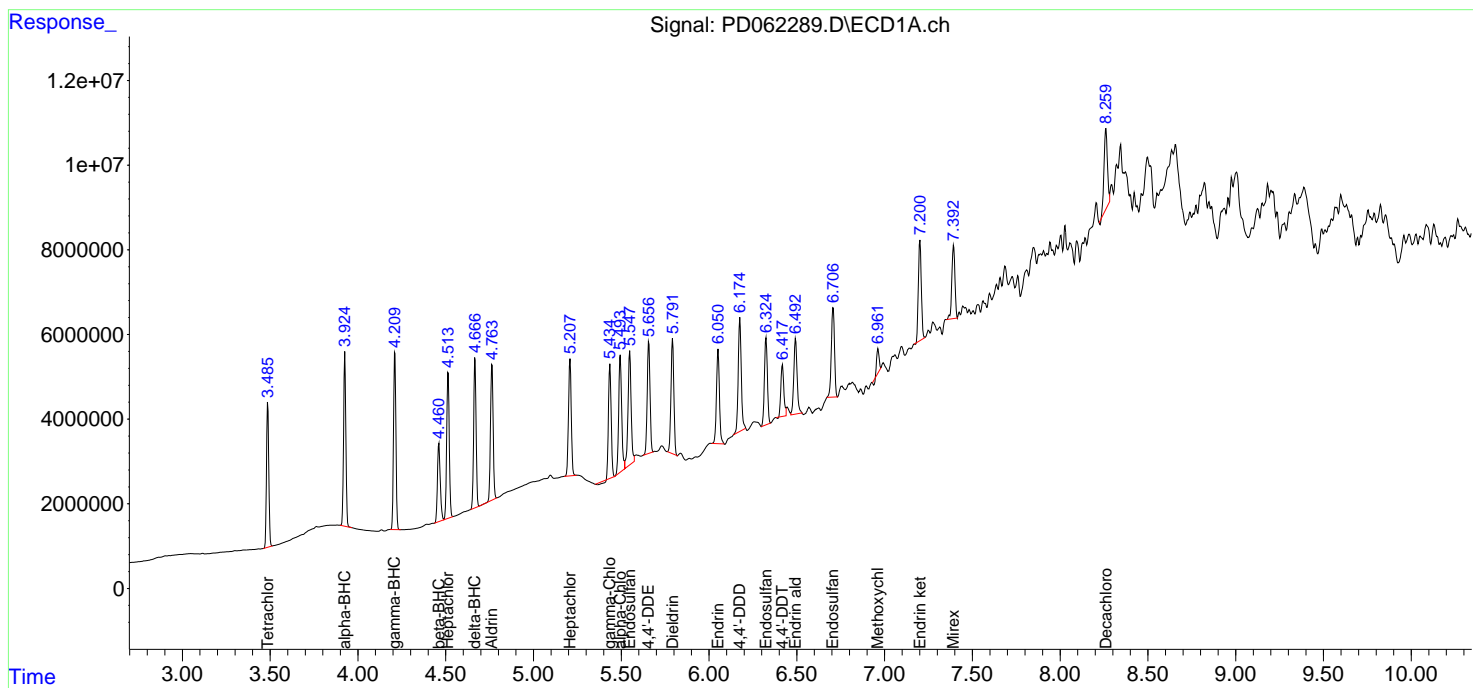
Data Path : Z:\pestpcbsrv\HPCHEM1\ECD_D\Data\PD042221\
 Data File : PD062289.D
 Signal(s) : Signal #1: ECD1A.ch Signal #2: ECD2B.ch
 Acq On : 22 Apr 2021 23:51
 Operator : AR\AJ
 Sample : PSTDCCC050
 Misc :
 ALS Vial : 4 Sample Multiplier: 1

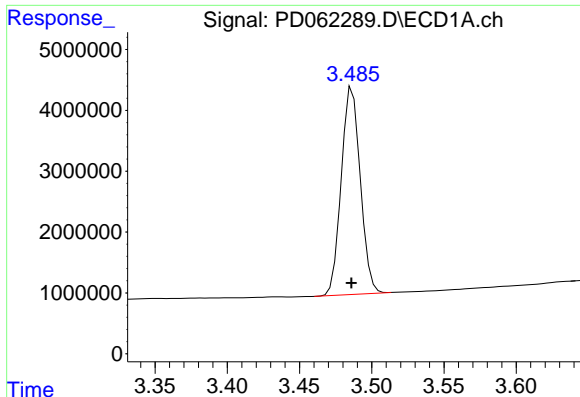
Instrument :
 ECD_D
Client Sampled :
 PSTDCCC050

Manual Integrations
APPROVED
 Ankita
 4/23/2021 4:50:11 PM

Integration File signal 1: autoint1.e
 Integration File signal 2: autoint2.e
 Quant Time: Apr 23 08:17:34 2021
 Quant Method : Z:\pestpcbsrv\HPCHEM1\ECD_D\Method\PD032921.M
 Quant Title : GC Extractables
 QLast Update : Tue Mar 30 04:47:56 2021
 Response via : Initial Calibration
 Integrator: ChemStation

Volume Inj. : 2 µl
 Signal #1 Phase : ZB-MR2 Signal #2 Phase: ZB-MR1
 Signal #1 Info : 30M x 0.32mm x0.2 Signal #2 Info : 30M x 0.32mm x 0.50µm





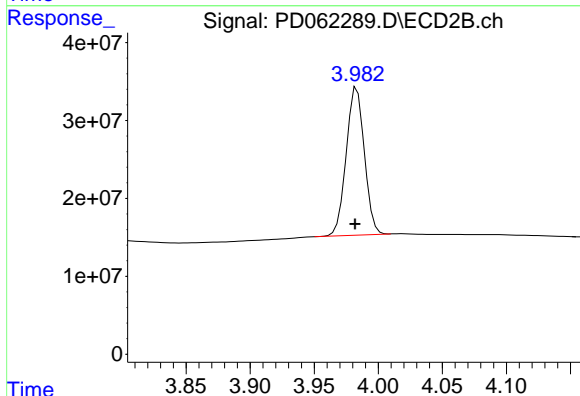
#1 Tetrachloro-m-xylene

R.T.: 3.487 min
 Delta R.T.: 0.000 min
 Response: 31097366
 Conc: 37.14 ng/ml

Instrument :
 ECD_D
 ClientSampleId :
 PSTDCCC050

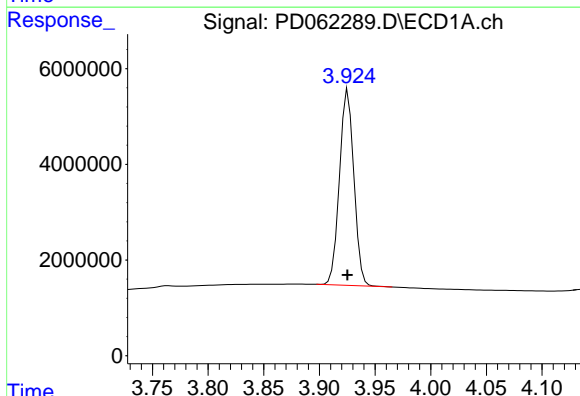
Manual Integrations
 APPROVED

Ankita
 4/23/2021 4:50:11 PM



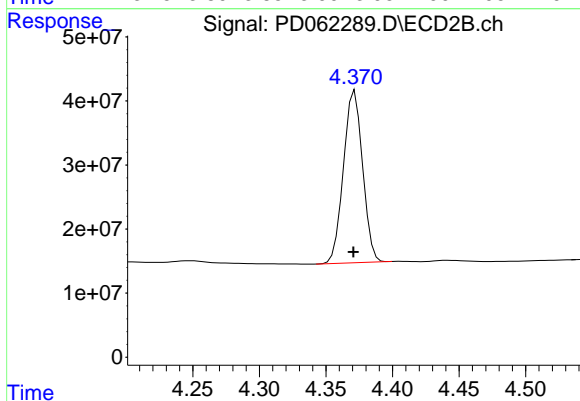
#1 Tetrachloro-m-xylene

R.T.: 3.983 min
 Delta R.T.: 0.001 min
 Response: 186917110
 Conc: 21.51 ng/ml



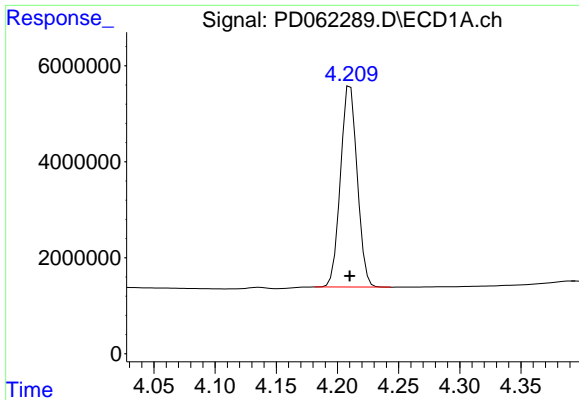
#2 alpha-BHC

R.T.: 3.926 min
 Delta R.T.: 0.000 min
 Response: 36891901
 Conc: 29.21 ng/ml



#2 alpha-BHC

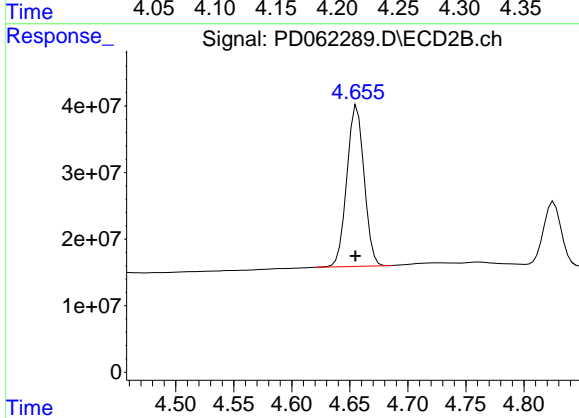
R.T.: 4.372 min
 Delta R.T.: 0.001 min
 Response: 269246018
 Conc: 20.02 ng/ml



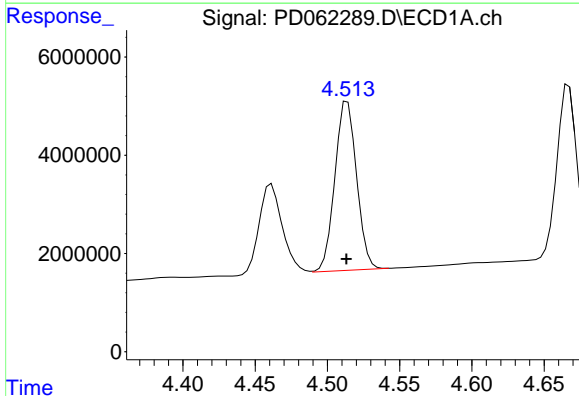
#3 gamma-BHC (Lindane)
R.T.: 4.211 min
Delta R.T.: 0.000 min
Response: 39967492
Conc: 33.66 ng/ml

Instrument :
ECD_D
ClientSampled :
PSTDCCC050

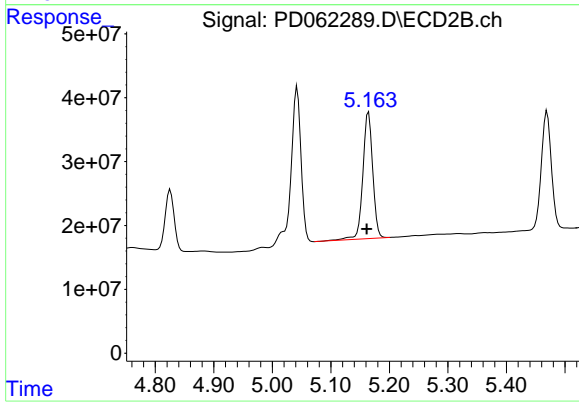
Manual Integrations
APPROVED
Ankita
4/23/2021 4:50:11 PM



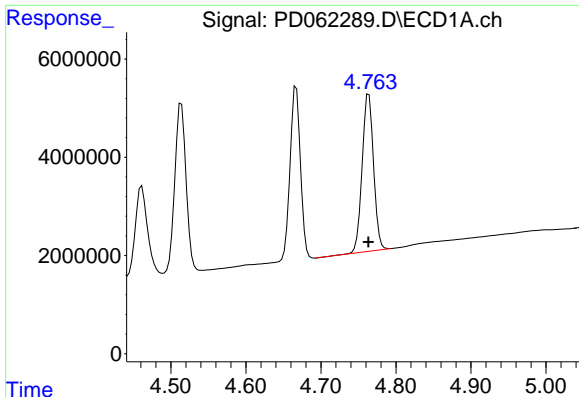
#3 gamma-BHC (Lindane)
R.T.: 4.656 min
Delta R.T.: 0.002 min
Response: 250138463
Conc: 20.05 ng/ml



#4 Heptachlor
R.T.: 4.514 min
Delta R.T.: 0.000 min
Response: 35908338
Conc: 30.84 ng/ml



#4 Heptachlor
R.T.: 5.165 min
Delta R.T.: 0.003 min
Response: 233834210
Conc: 17.94 ng/ml

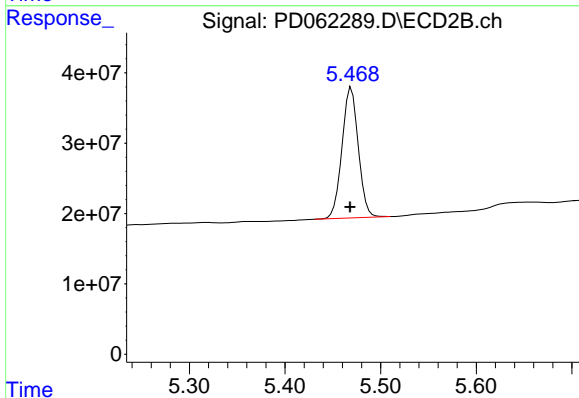


#5 Aldrin
 R.T.: 4.764 min
 Delta R.T.: 0.000 min
 Response: 33718458
 Conc: 28.10 ng/ml

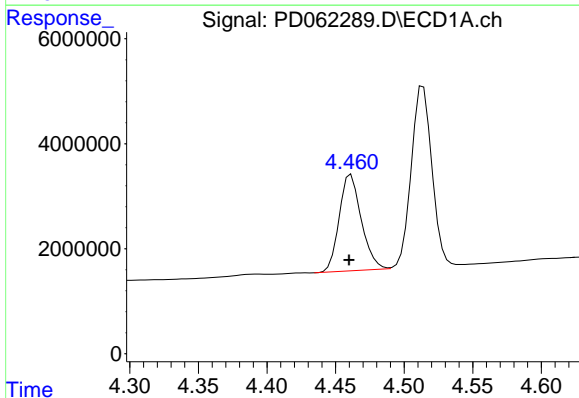
Instrument :
 ECD_D
 ClientSampleId :
 PSTDCCC050

Manual Integrations
 APPROVED

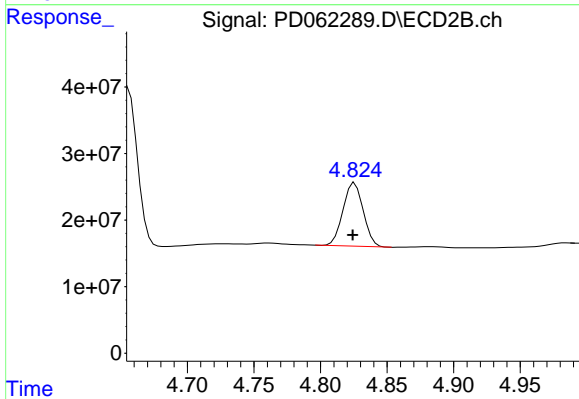
Ankita
 4/23/2021 4:50:11 PM



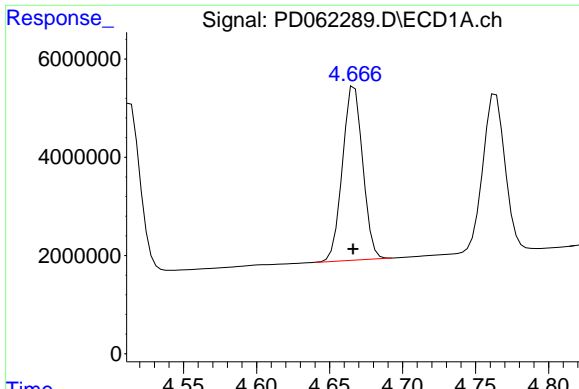
#5 Aldrin
 R.T.: 5.469 min
 Delta R.T.: 0.001 min
 Response: 220755920
 Conc: 17.74 ng/ml



#6 beta-BHC
 R.T.: 4.461 min
 Delta R.T.: 0.001 min
 Response: 20532983
 Conc: 37.65 ng/ml



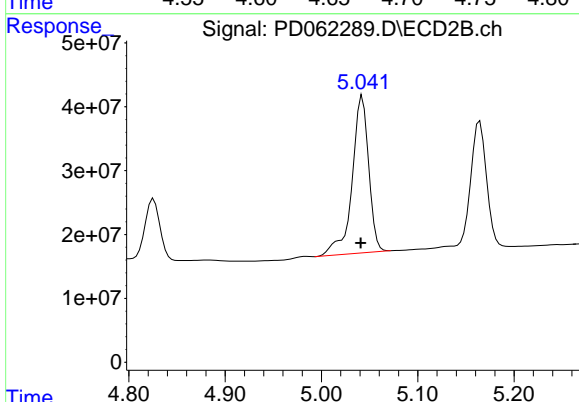
#6 beta-BHC
 R.T.: 4.826 min
 Delta R.T.: 0.002 min
 Response: 100569751
 Conc: 19.47 ng/ml



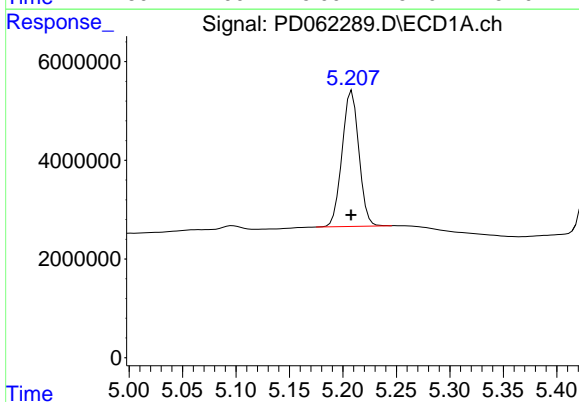
#7 delta-BHC
 R.T.: 4.667 min
 Delta R.T.: 0.000 min
 Response: 34138365
 Conc: 28.10 ng/ml

Instrument :
 ECD_D
ClientSampled :
 PSTDCCC050

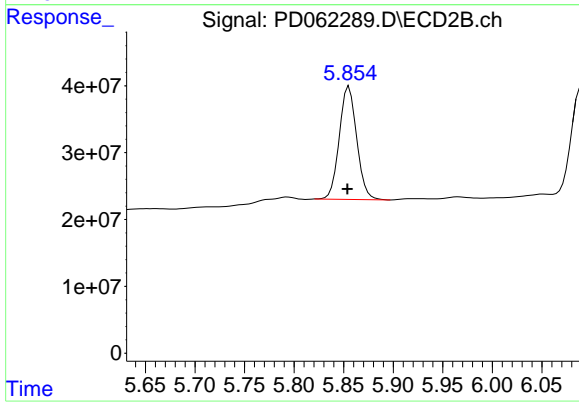
Manual Integrations
APPROVED
 Ankita
 4/23/2021 4:50:11 PM



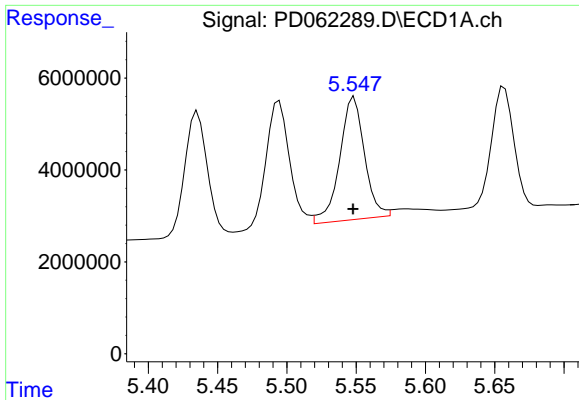
#7 delta-BHC
 R.T.: 5.042 min
 Delta R.T.: 0.001 min
 Response: 294964978
 Conc: 22.30 ng/ml



#8 Heptachlor epoxide
 R.T.: 5.208 min
 Delta R.T.: 0.000 min
 Response: 30136608
 Conc: 26.29 ng/ml



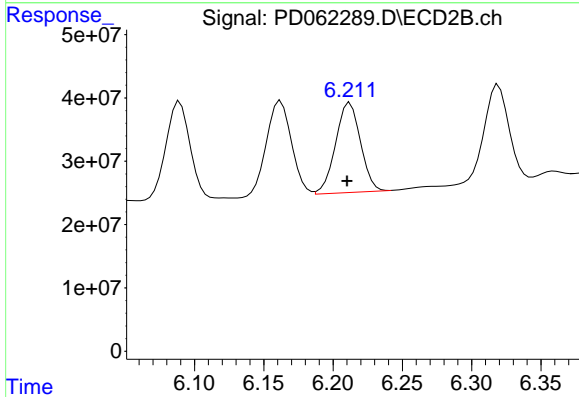
#8 Heptachlor epoxide
 R.T.: 5.855 min
 Delta R.T.: 0.002 min
 Response: 206927820
 Conc: 17.48 ng/ml



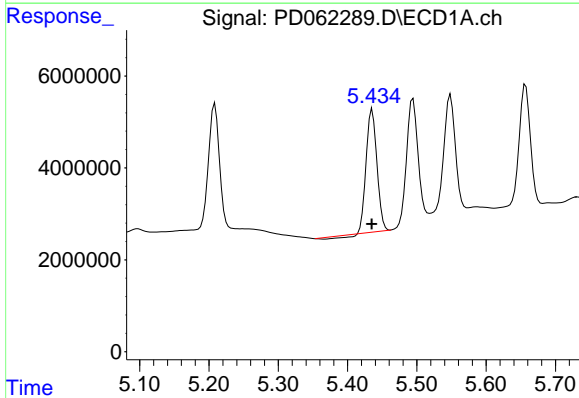
#9 Endosulfan I
 R.T.: 5.549 min
 Delta R.T.: 0.000 min
 Response: 33266893
 Conc: 30.29 ng/ml

Instrument :
 ECD_D
 ClientSampleId :
 PSTDCCC050

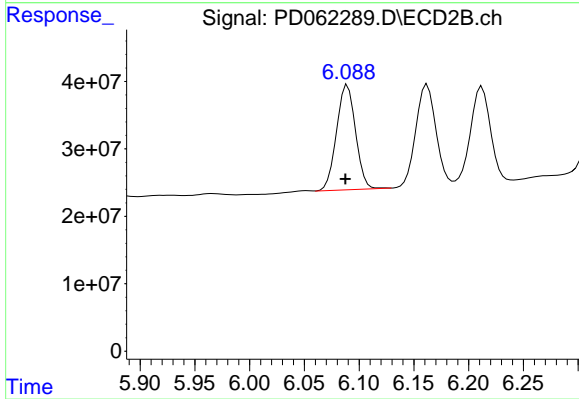
Manual Integrations
 APPROVED
 Ankita
 4/23/2021 4:50:11 PM



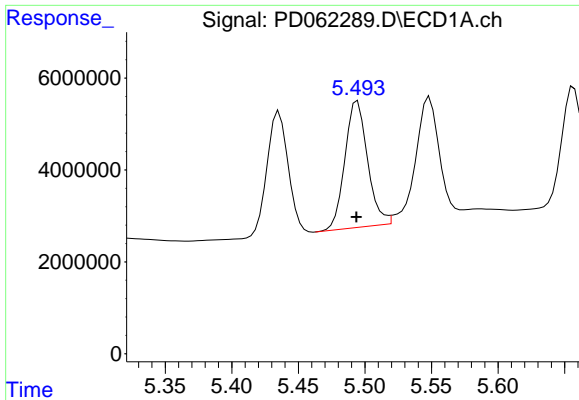
#9 Endosulfan I
 R.T.: 6.212 min
 Delta R.T.: 0.002 min
 Response: 177117373
 Conc: 16.34 ng/ml



#10 gamma-Chlordane
 R.T.: 5.436 min
 Delta R.T.: 0.000 min
 Response: 27912410
 Conc: 23.83 ng/ml



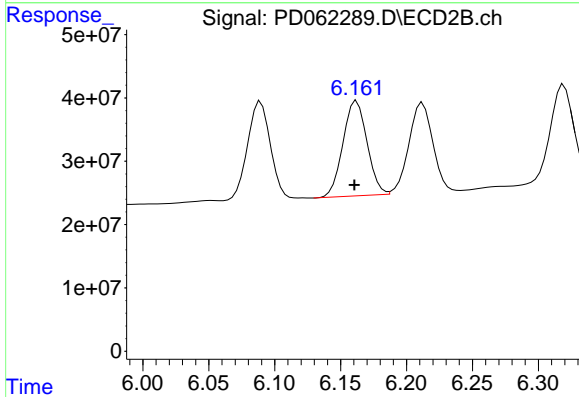
#10 gamma-Chlordane
 R.T.: 6.089 min
 Delta R.T.: 0.002 min
 Response: 187651014
 Conc: 15.83 ng/ml



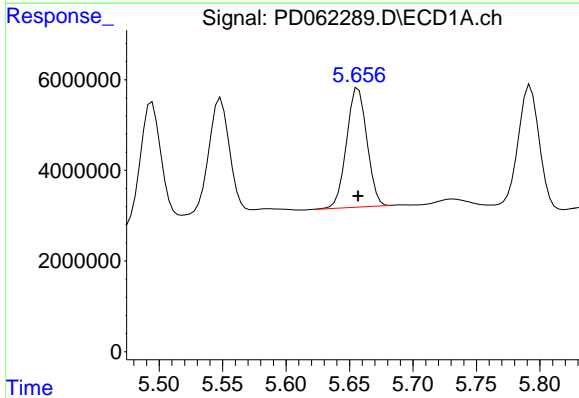
#11 alpha-Chlordane
 R.T.: 5.494 min
 Delta R.T.: 0.000 min
 Response: 32618290
 Conc: 28.07 ng/ml

Instrument :
 ECD_D
 ClientSampleId :
 PSTDCCC050

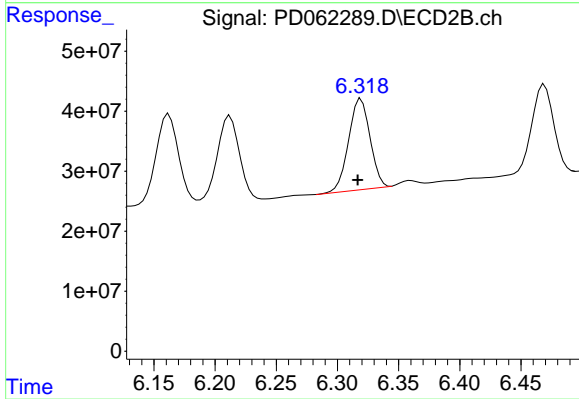
Manual Integrations
 APPROVED
 Ankita
 4/23/2021 4:50:11 PM



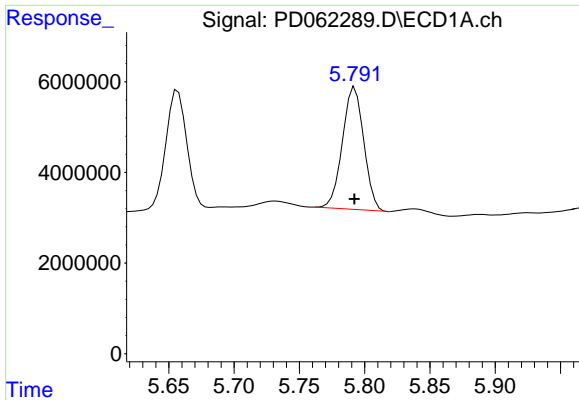
#11 alpha-Chlordane
 R.T.: 6.162 min
 Delta R.T.: 0.002 min
 Response: 190381479
 Conc: 16.70 ng/ml



#12 4,4'-DDE
 R.T.: 5.657 min
 Delta R.T.: 0.000 min
 Response: 29271003
 Conc: 26.05 ng/ml



#12 4,4'-DDE
 R.T.: 6.319 min
 Delta R.T.: 0.003 min
 Response: 185041030
 Conc: 16.06 ng/ml

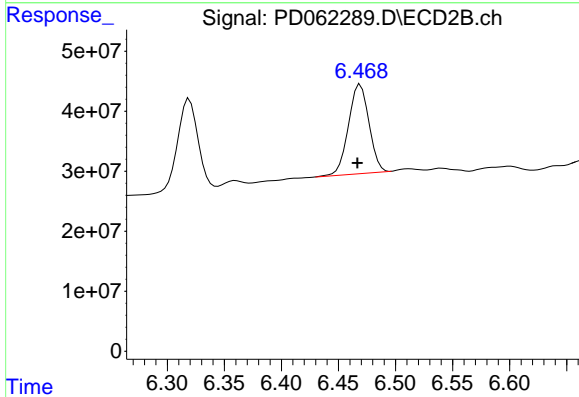


#13 Dieldrin

R.T.: 5.793 min
 Delta R.T.: 0.000 min
 Response: 30752247
 Conc: 26.60 ng/ml

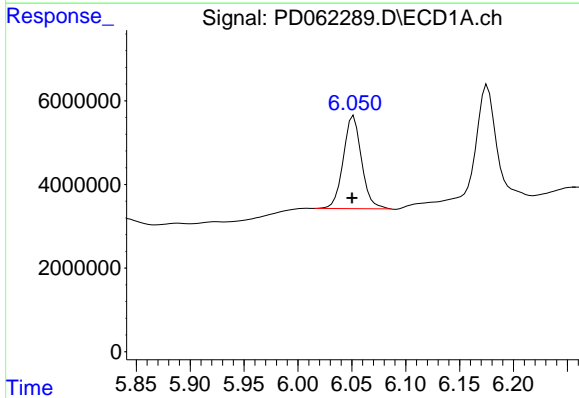
Instrument :
 ECD_D
 ClientSampleId :
 PSTDCCC050

Manual Integrations
 APPROVED
 Ankita
 4/23/2021 4:50:11 PM



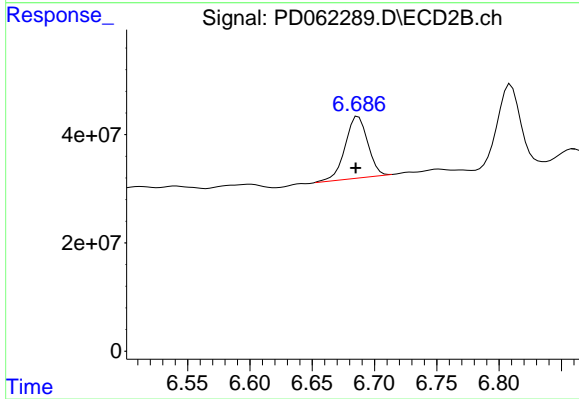
#13 Dieldrin

R.T.: 6.469 min
 Delta R.T.: 0.002 min
 Response: 186417923
 Conc: 16.15 ng/ml



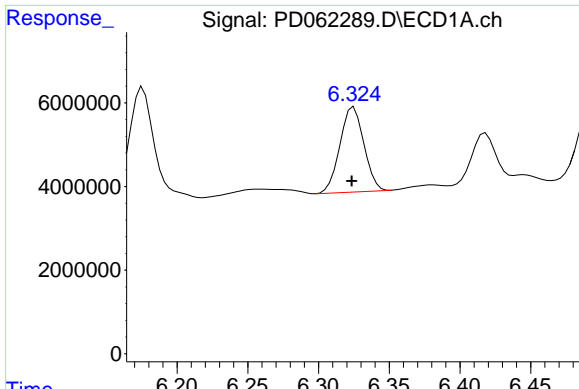
#14 Endrin

R.T.: 6.052 min
 Delta R.T.: 0.001 min
 Response: 26221994
 Conc: 25.52 ng/ml



#14 Endrin

R.T.: 6.687 min
 Delta R.T.: 0.002 min
 Response: 143945177
 Conc: 14.55 ng/ml



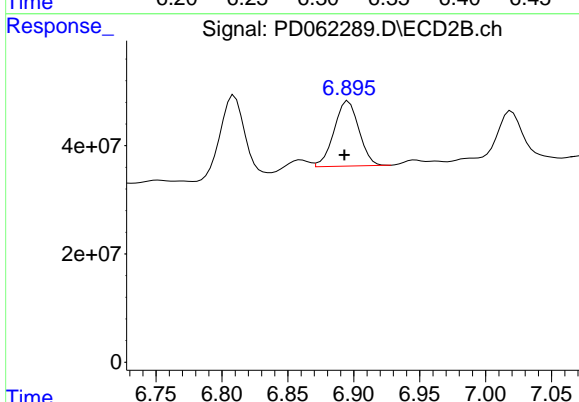
#15 Endosulfan II

R.T.: 6.325 min
 Delta R.T.: 0.002 min
 Response: 24072960
 Conc: 23.49 ng/ml

Instrument :
 ECD_D
 ClientSampled :
 PSTDCCC050

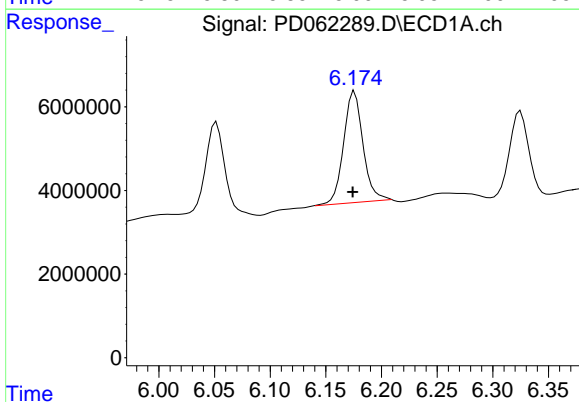
Manual Integrations
 APPROVED

Ankita
 4/23/2021 4:50:11 PM



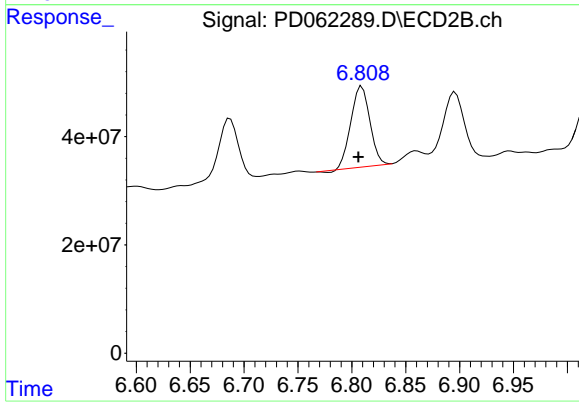
#15 Endosulfan II

R.T.: 6.896 min
 Delta R.T.: 0.003 min
 Response: 158151363
 Conc: 16.66 ng/ml



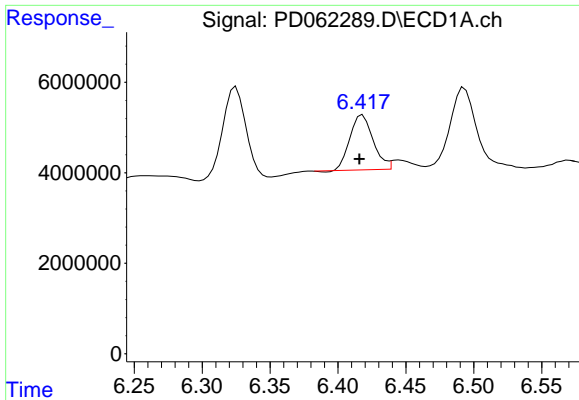
#16 4,4'-DDD

R.T.: 6.176 min
 Delta R.T.: 0.002 min
 Response: 32456004
 Conc: 34.88 ng/ml



#16 4,4'-DDD

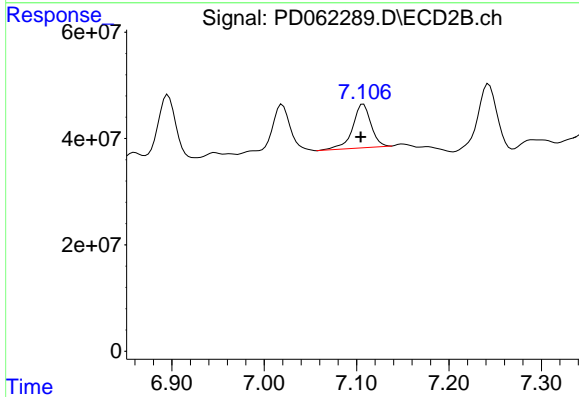
R.T.: 6.809 min
 Delta R.T.: 0.003 min
 Response: 181989159
 Conc: 19.22 ng/ml



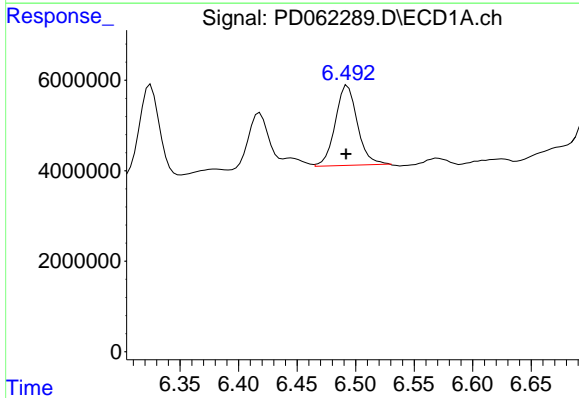
#17 4,4'-DDT
 R.T.: 6.418 min
 Delta R.T.: 0.002 min
 Response: 14421637
 Conc: 16.01 ng/ml

Instrument :
 ECD_D
ClientSampled :
 PSTDCCC050

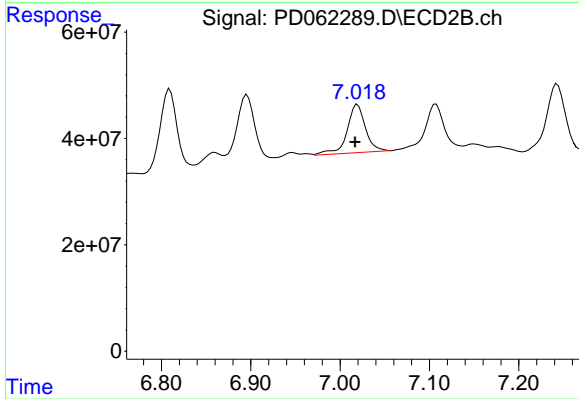
Manual Integrations
APPROVED
 Ankita
 4/23/2021 4:50:11 PM



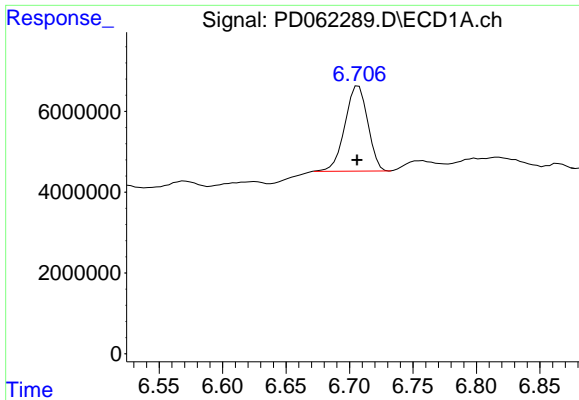
#17 4,4'-DDT
 R.T.: 7.107 min
 Delta R.T.: 0.003 min
 Response: 113076357
 Conc: 11.84 ng/ml



#18 Endrin aldehyde
 R.T.: 6.493 min
 Delta R.T.: 0.001 min
 Response: 23268270
 Conc: 27.23 ng/ml



#18 Endrin aldehyde
 R.T.: 7.020 min
 Delta R.T.: 0.003 min
 Response: 130683525
 Conc: 16.62 ng/ml



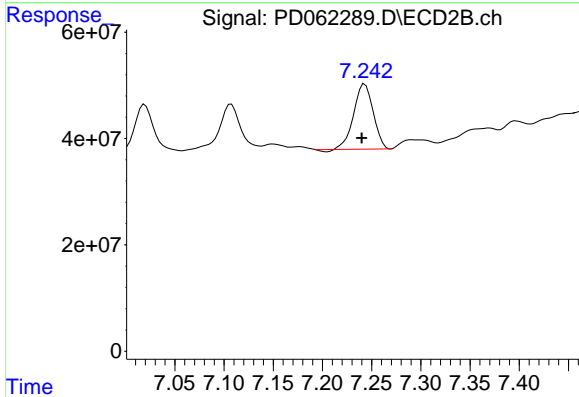
#19 Endosulfan Sulfate

R.T.: 6.707 min
 Delta R.T.: 0.001 min
 Response: 26405156
 Conc: 24.47 ng/ml

Instrument :
 ECD_D
 ClientSampled :
 PSTDCCC050

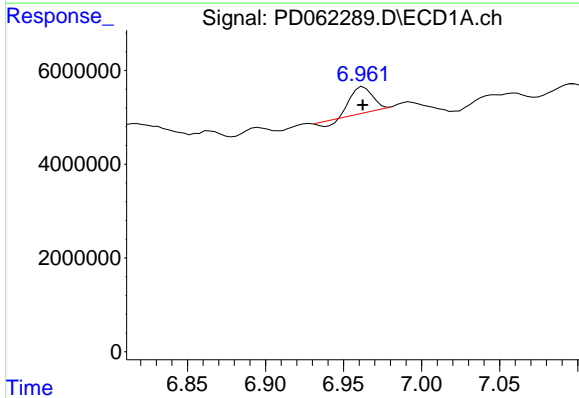
Manual Integrations
 APPROVED

Ankita
 4/23/2021 4:50:11 PM



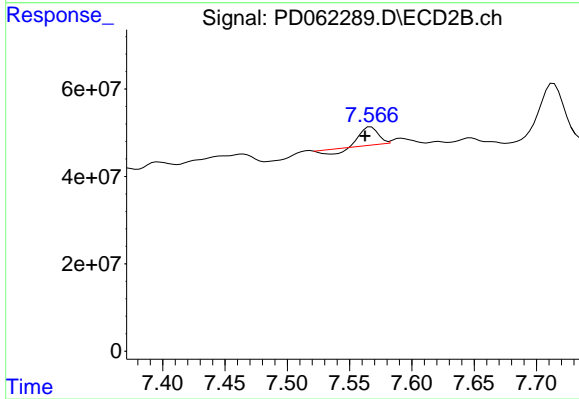
#19 Endosulfan Sulfate

R.T.: 7.243 min
 Delta R.T.: 0.003 min
 Response: 167940641
 Conc: 16.76 ng/ml



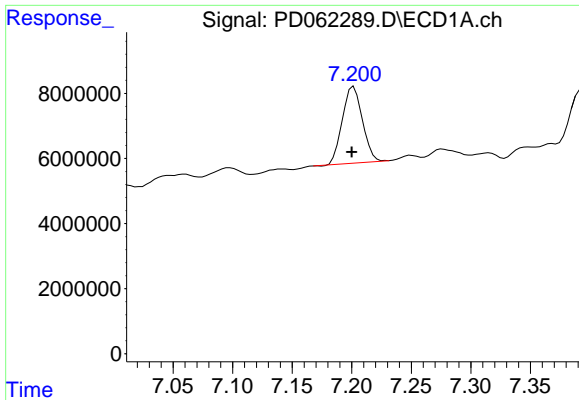
#20 Methoxychlor

R.T.: 6.963 min
 Delta R.T.: 0.000 min
 Response: 4772009
 Conc: 10.10 ng/ml



#20 Methoxychlor

R.T.: 7.567 min
 Delta R.T.: 0.005 min
 Response: 30897901
 Conc: 6.85 ng/ml

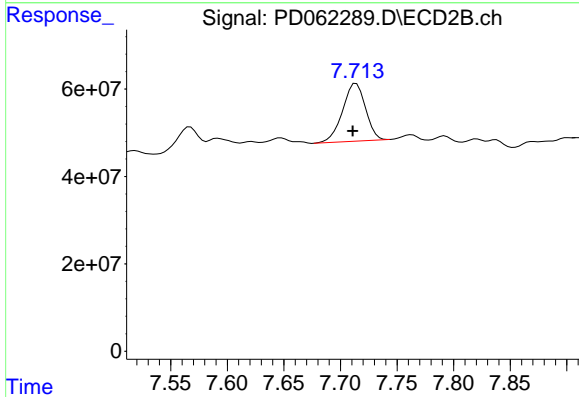


#21 Endrin ketone

R.T.: 7.202 min
 Delta R.T.: 0.002 min
 Response: 27482289
 Conc: 21.53 ng/ml

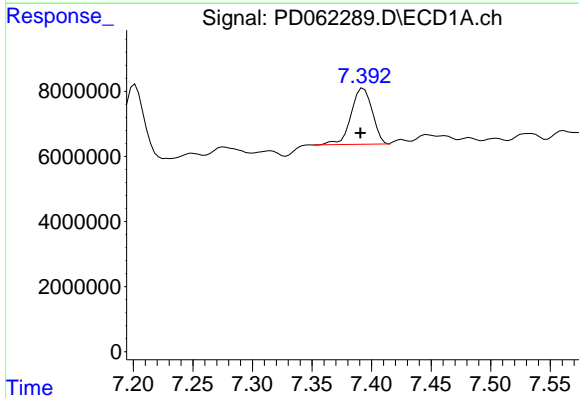
Instrument :
 ECD_D
 ClientSampleId :
 PSTDCCC050

Manual Integrations
 APPROVED
 Ankita
 4/23/2021 4:50:11 PM



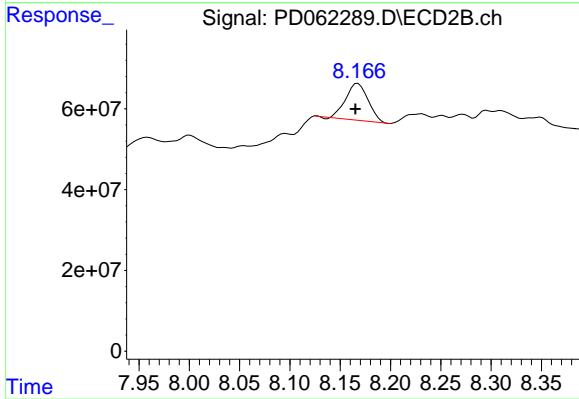
#21 Endrin ketone

R.T.: 7.714 min
 Delta R.T.: 0.003 min
 Response: 186539090
 Conc: 18.39 ng/ml



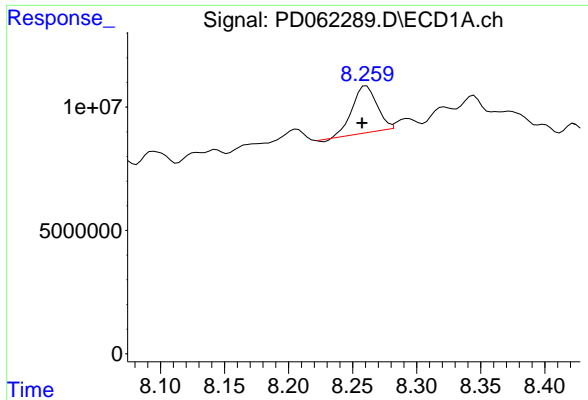
#22 Mirex

R.T.: 7.393 min
 Delta R.T.: 0.003 min
 Response: 21258361
 Conc: 22.25 ng/ml



#22 Mirex

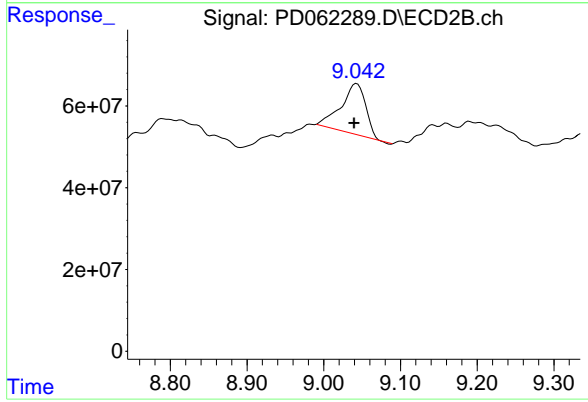
R.T.: 8.168 min
 Delta R.T.: 0.002 min
 Response: 141122611
 Conc: 21.90 ng/ml



#28 Decachlorobiphenyl
R.T.: 8.261 min
Delta R.T.: 0.003 min
Response: 25099593
Conc: 20.40 ng/ml

Instrument :
ECD_D
ClientSampled :
PSTDCCC050

Manual Integrations
APPROVED
Ankita
4/23/2021 4:50:11 PM



#28 Decachlorobiphenyl
R.T.: 9.043 min
Delta R.T.: 0.003 min
Response: 271075703
Conc: 28.71 ng/ml