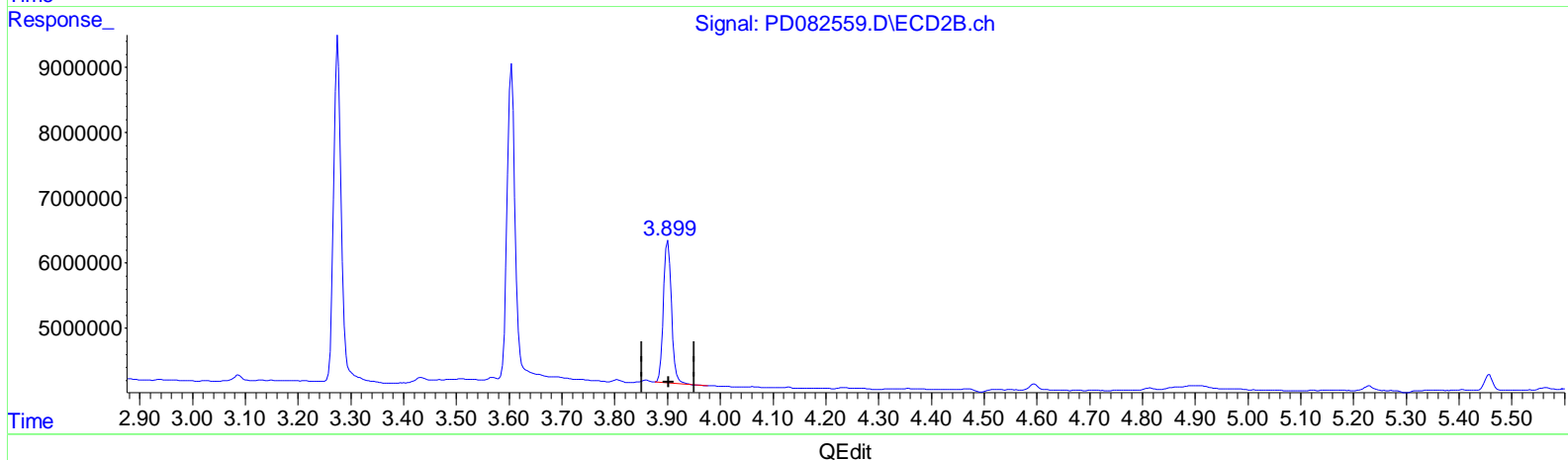
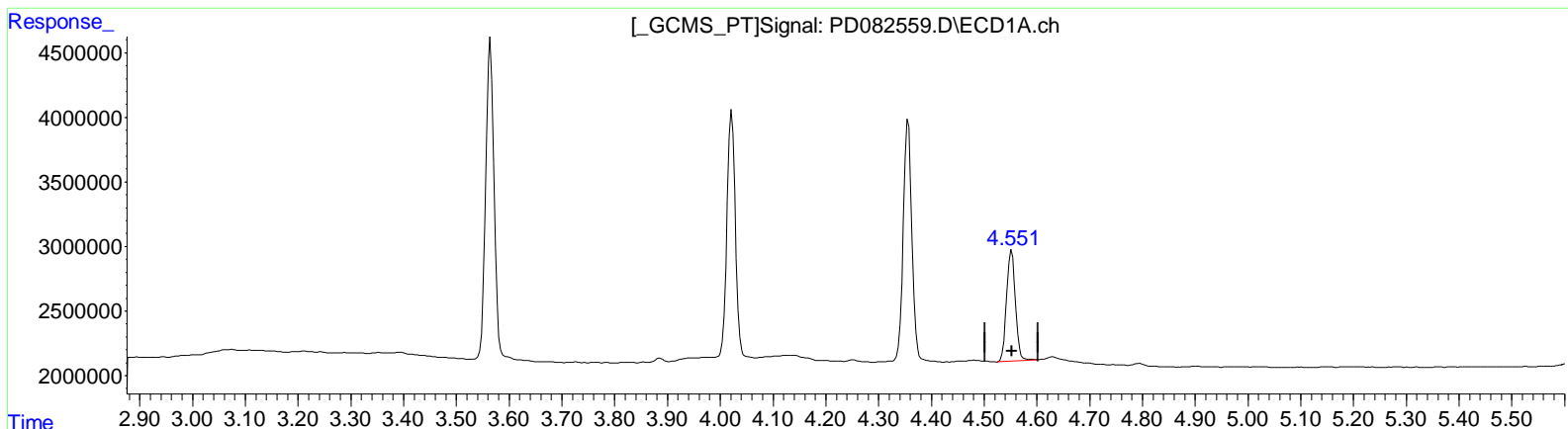


Data Path : Z:\pestpcbsrv\HPCHEM1\ECD_D\Data\PD042224\
 Data File : PD082559.D
 Signal(s) : Signal #1: ECD1A.ch Signal #2: ECD2B.ch
 Acq On : 22 Apr 2024 16:39
 Operator : ARVAJ
 Sample : PEM051
 Misc :
 ALS Vial : 3 Sample Multiplier: 1

Integration File signal 1: autoint1.e
 Integration File signal 2: autoint2.e
 Quant Time: Apr 22 21:29:23 2024
 Quant Method : Z:\pestpcbsrv\HPCHEM1\ECD_D\Method\PD041024CLP.M
 Quant Title : GC Extractables
 QLast Update : Wed Apr 10 02:08:54 2024
 Response via : Initial Calibration
 Integrator: ChemStation

Volume Inj. : 1 µl
 Signal #1 Phase : ZB-MR1 Signal #2 Phase: ZB-MR2
 Signal #1 Info : 30M x 0.32mm x0.5 Signal #2 Info : 30M x 0.32mm x 0.25µm



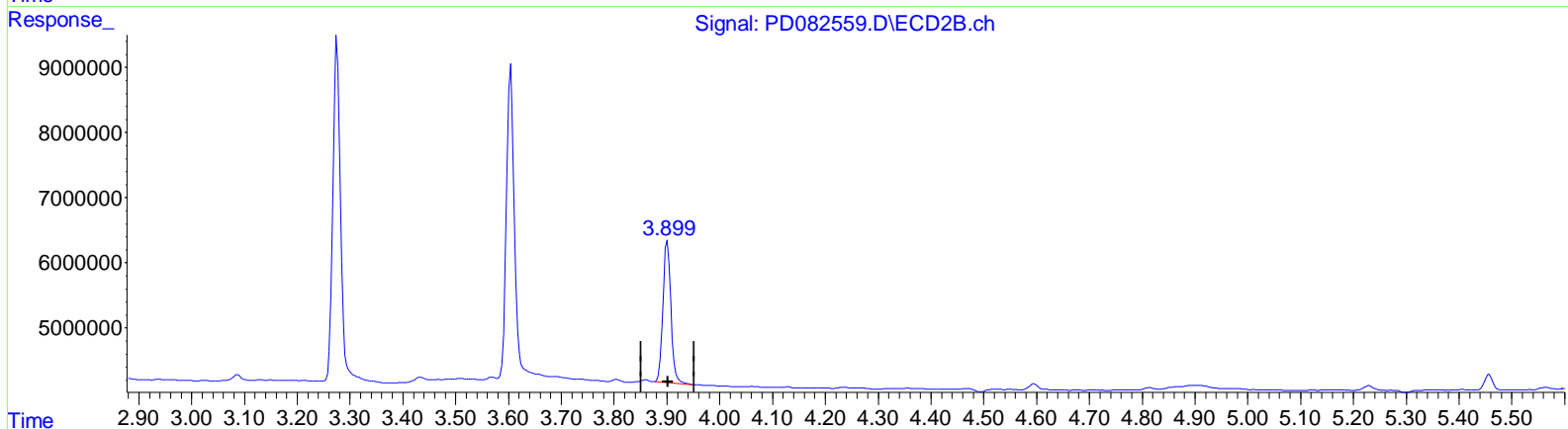
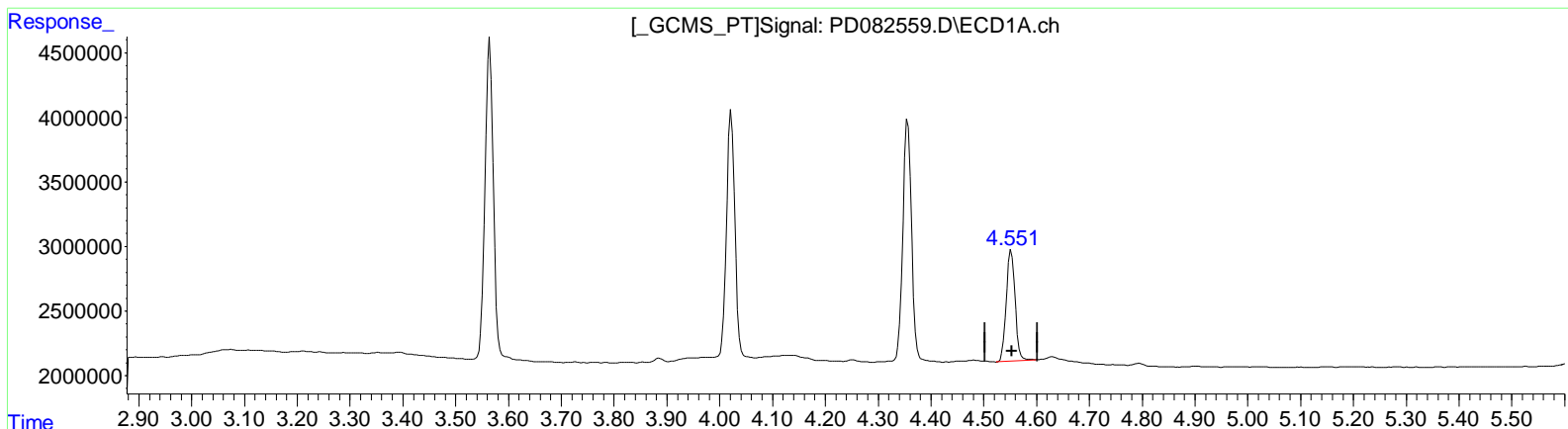
(6) beta-BHC (B)
 4.552min 9.532 ng/ml
 response 9994234

(6) beta-BHC #2 (B)
 3.901min 11.087 ng/ml
 response 23048864

Data Path : Z:\pestpcbsrv\HPCHEM1\ECD_D\Data\PD042224\
 Data File : PD082559.D
 Signal(s) : Signal #1: ECD1A.ch Signal #2: ECD2B.ch
 Acq On : 22 Apr 2024 16:39
 Operator : ARVAJ
 Sample : PEM051
 Misc :
 ALS Vial : 3 Sample Multiplier: 1

Integration File signal 1: autoint1.e
 Integration File signal 2: autoint2.e
 Quant Time: Apr 22 21:29:23 2024
 Quant Method : Z:\pestpcbsrv\HPCHEM1\ECD_D\Method\PD041024CLP.M
 Quant Title : GC Extractables
 QLast Update : Wed Apr 10 02:08:54 2024
 Response via : Initial Calibration
 Integrator: ChemStation

Volume Inj. : 1 µl
 Signal #1 Phase : ZB-MR1 Signal #2 Phase: ZB-MR2
 Signal #1 Info : 30M x 0.32mm x0.5 Signal #2 Info : 30M x 0.32mm x 0.25µm



QEdit

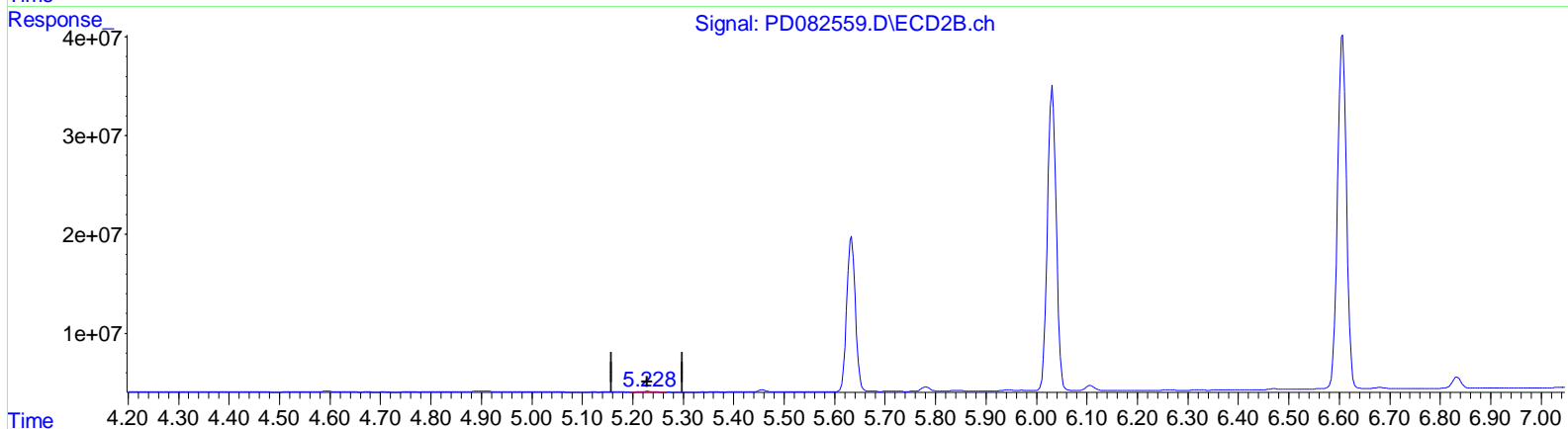
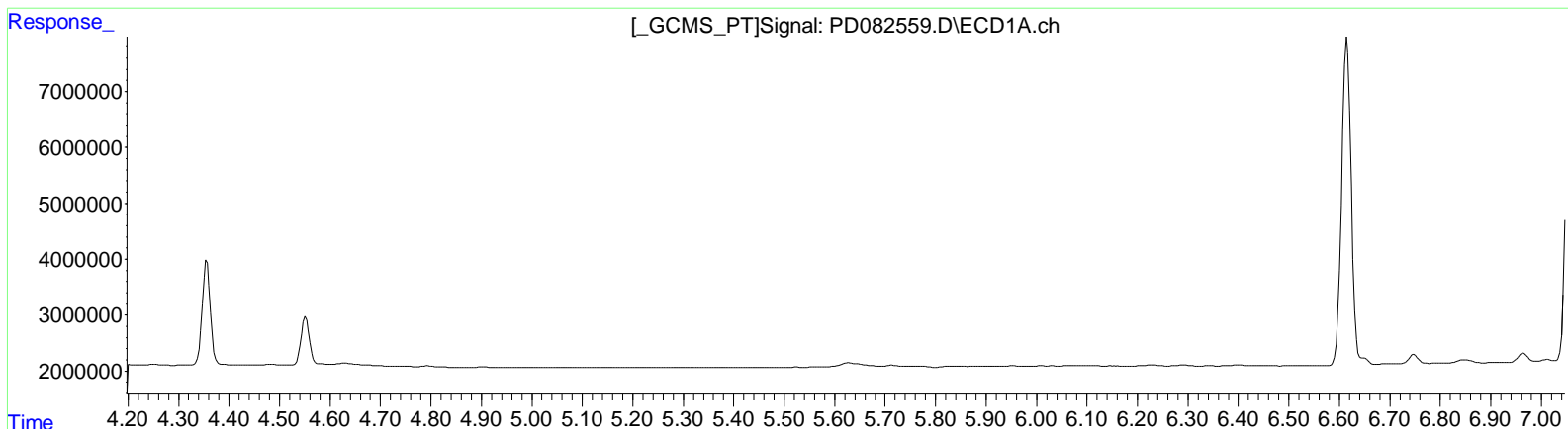
(6) beta-BHC (B)
 4.552min 9.532 ng/ml
 response 9994234

(6) beta-BHC #2 (B)
 3.899min 11.063 ng/ml m
 response 22999325

Data Path : Z:\pestpcbsrv\HPCHEM1\ECD_D\Data\PD042224\
Data File : PD082559.D
Signal(s) : Signal #1: ECD1A.ch Signal #2: ECD2B.ch
Acq On : 22 Apr 2024 16:39
Operator : ARVAJ
Sample : PEM051
Misc :
ALS Vial : 3 Sample Multiplier: 1

Integration File signal 1: autoint1.e
Integration File signal 2: autoint2.e
Quant Time: Apr 22 21:29:23 2024
Quant Method : Z:\pestpcbsrv\HPCHEM1\ECD_D\Method\PD041024CLP.M
Quant Title : GC Extractables
QLast Update : Wed Apr 10 02:08:54 2024
Response via : Initial Calibration
Integrator: ChemStation

Volume Inj. : 1 µl
Signal #1 Phase : ZB-MR1 Signal #2 Phase: ZB-MR2
Signal #1 Info : 30M x 0.32mm x 0.5 Signal #2 Info : 30M x 0.32mm x 0.25µm



QEdit

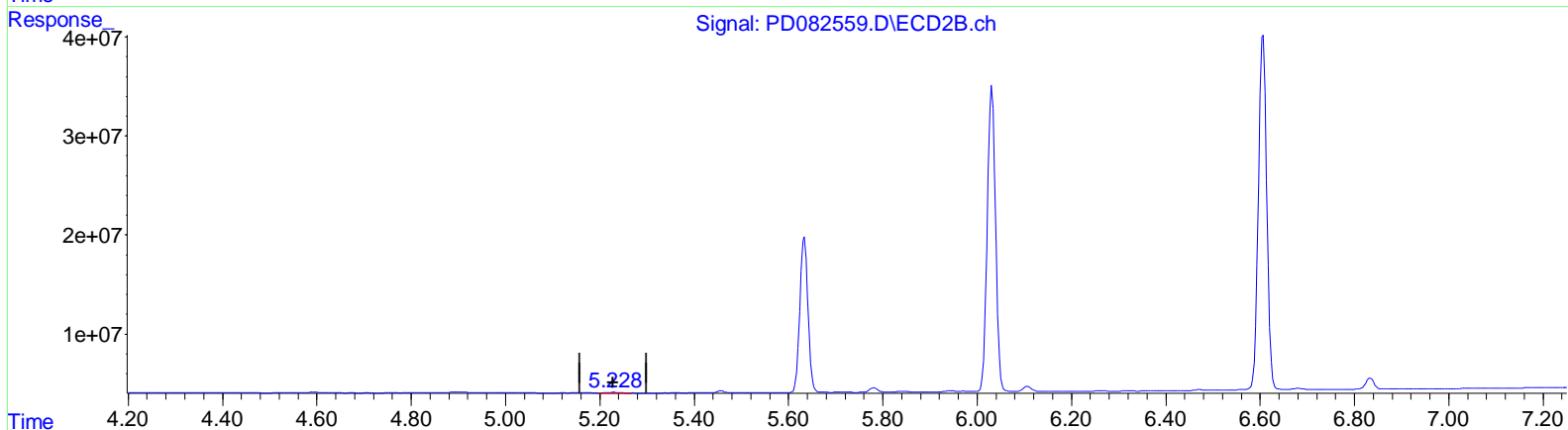
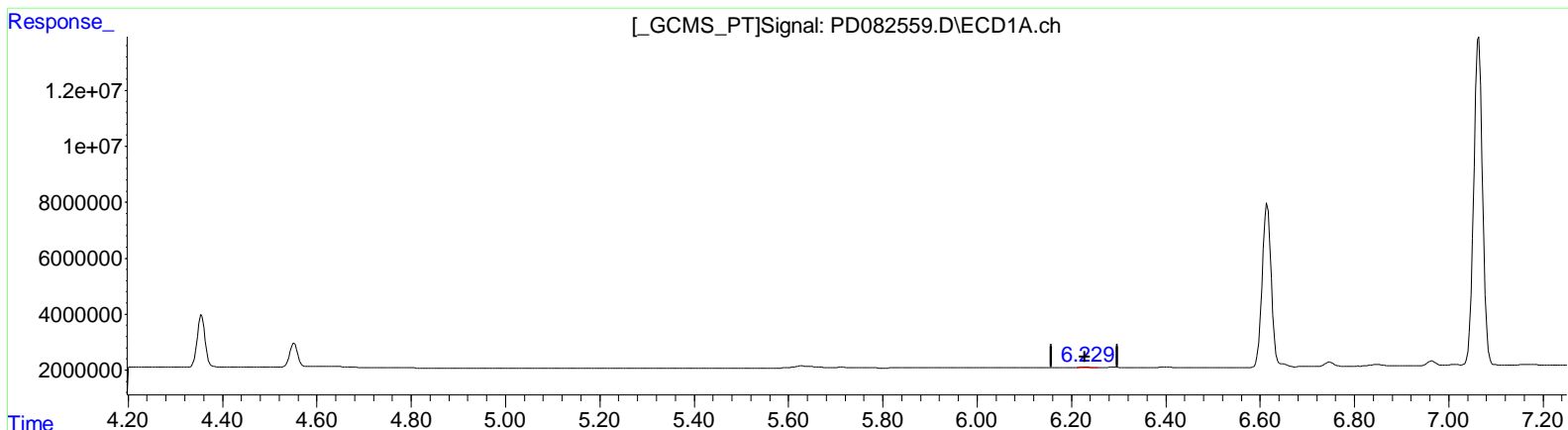
(12) 4,4'-DDE (B)
0.000min 0.000 ng/ml
response 0

(12) 4,4'-DDE #2 (B)
5.230min 0.228 ng/ml
response 883586

Data Path : Z:\pestpcbsrv\HPCHEM1\ECD_D\Data\PD042224\
 Data File : PD082559.D
 Signal(s) : Signal #1: ECD1A.ch Signal #2: ECD2B.ch
 Acq On : 22 Apr 2024 16:39
 Operator : ARVAJ
 Sample : PEM051
 Misc :
 ALS Vial : 3 Sample Multiplier: 1

Integration File signal 1: autoint1.e
 Integration File signal 2: autoint2.e
 Quant Time: Apr 22 21:29:23 2024
 Quant Method : Z:\pestpcbsrv\HPCHEM1\ECD_D\Method\PD041024CLP.M
 Quant Title : GC Extractables
 QLast Update : Wed Apr 10 02:08:54 2024
 Response via : Initial Calibration
 Integrator: ChemStation

Volume Inj. : 1 µl
 Signal #1 Phase : ZB-MR1 Signal #2 Phase: ZB-MR2
 Signal #1 Info : 30M x 0.32mm x 0.5 Signal #2 Info : 30M x 0.32mm x 0.25µm



QEdit

(12) 4,4'-DDE (B)
 6.229min 0.104 ng/ml m
 response 214917

(12) 4,4'-DDE #2 (B)
 5.230min 0.228 ng/ml
 response 883586

Data Path : Z:\pestpcbsrv\HPCHEM1\ECD_D\Data\PD042224\
 Data File : PD082559.D
 Signal(s) : Signal #1: ECD1A.ch Signal #2: ECD2B.ch
 Acq On : 22 Apr 2024 16:39
 Operator : AR\AJ
 Sample : PEM051
 Misc :
 ALS Vial : 3 Sample Multiplier: 1

Integration File signal 1: autoint1.e
 Integration File signal 2: autoint2.e
 Quant Time: Apr 22 21:29:23 2024
 Quant Method : Z:\pestpcbsrv\HPCHEM1\ECD_D\Method\PD041024CLP.M
 Quant Title : GC Extractables
 QLast Update : Wed Apr 10 02:08:54 2024
 Response via : Initial Calibration
 Integrator: ChemStation

Volume Inj. : 1 µl
 Signal #1 Phase : ZB-MR1 Signal #2 Phase: ZB-MR2
 Signal #1 Info : 30M x 0.32mm x 0.5 Signal #2 Info : 30M x 0.32mm x 0.25µm

Compound	RT#1	RT#2	Resp#1	Resp#2	ng/ml	ng/ml

System Monitoring Compounds						
1) SA Tetrachloro...	3.564	2.775	27000057	70414999	17.805	20.424
27) SA Decachloro...	9.123	7.908	38878316	76396004	19.881	23.478
Target Compounds						
2) A alpha-BHC	4.022	3.275	20959254	54530626	8.159	10.155
3) MA gamma-BHC...	4.356	3.605	21406392	51283000	8.610	10.228
6) B beta-BHC	4.552	3.899	9994234	22999325	9.532	11.063m
12) B 4,4'-DDE	6.229	5.230	214917	883586	0.104m	0.228 #
14) MA Endrin	6.615	5.634	78169431	187.1E6	42.637	51.569
16) A 4,4'-DDD	6.748	5.781	2053485	5275292	1.303	1.713 #
17) MA 4,4'-DDT	7.064	6.032	150.8E6	372.4E6	92.181	113.467
18) B Endrin al...	6.965	6.107	2005760	6200125	1.479	2.344 #
20) A Methoxychlor	7.539	6.607	190.6E6	438.3E6	216.308	261.748
21) B Endrin ke...	7.687	6.834	4307050	13746019	2.398	3.656 #

(f)=RT Delta > 1/2 Window (#)=Amounts differ by > 25% (m)=manual int.

Data Path : Z:\pestpcbsrv\HPCHEM1\ECD_D\Data\PD042224\
 Data File : PD082559.D
 Signal(s) : Signal #1: ECD1A.ch Signal #2: ECD2B.ch
 Acq On : 22 Apr 2024 16:39
 Operator : ARVAJ
 Sample : PEM051
 Misc :
 ALS Vial : 3 Sample Multiplier: 1

Integration File signal 1: autoint1.e
 Integration File signal 2: autoint2.e
 Quant Time: Apr 22 21:29:23 2024
 Quant Method : Z:\pestpcbsrv\HPCHEM1\ECD_D\Method\PD041024CLP.M
 Quant Title : GC Extractables
 QLast Update : Wed Apr 10 02:08:54 2024
 Response via : Initial Calibration
 Integrator: ChemStation

Volume Inj. : 1 µl
 Signal #1 Phase : ZB-MR1 Signal #2 Phase: ZB-MR2
 Signal #1 Info : 30M x 0.32mm x 0.5 Signal #2 Info : 30M x 0.32mm x 0.25µm

