

Data Path : Z:\pestpcbsrv\HPCHEM1\ECD_D\Data\PD042421\
 Data File : PD062344.D
 Signal(s) : Signal #1: ECD1A.ch Signal #2: ECD2B.ch
 Acq On : 24 Apr 2021 11:46
 Operator : AR\AJ
 Sample : M2107-03
 Misc :
 ALS Vial : 14 Sample Multiplier: 1

Integration File signal 1: autoint1.e
 Integration File signal 2: autoint2.e
 Quant Time: Apr 26 06:50:34 2021
 Quant Method : Z:\pestpcbsrv\HPCHEM1\ECD_D\Method\PD042321.M
 Quant Title : GC Extractables
 QLast Update : Fri Apr 23 23:19:57 2021
 Response via : Initial Calibration
 Integrator: ChemStation

Volume Inj. : 2 µl
 Signal #1 Phase : ZB-MR1 Signal #2 Phase: ZB-MR1
 Signal #1 Info : 30M x 0.32mm x0.2 Signal #2 Info : 30M x 0.32mm x 0.50µm

	Compound	RT#1	RT#2	Resp#1	Resp#2	ng/ml	ng/ml

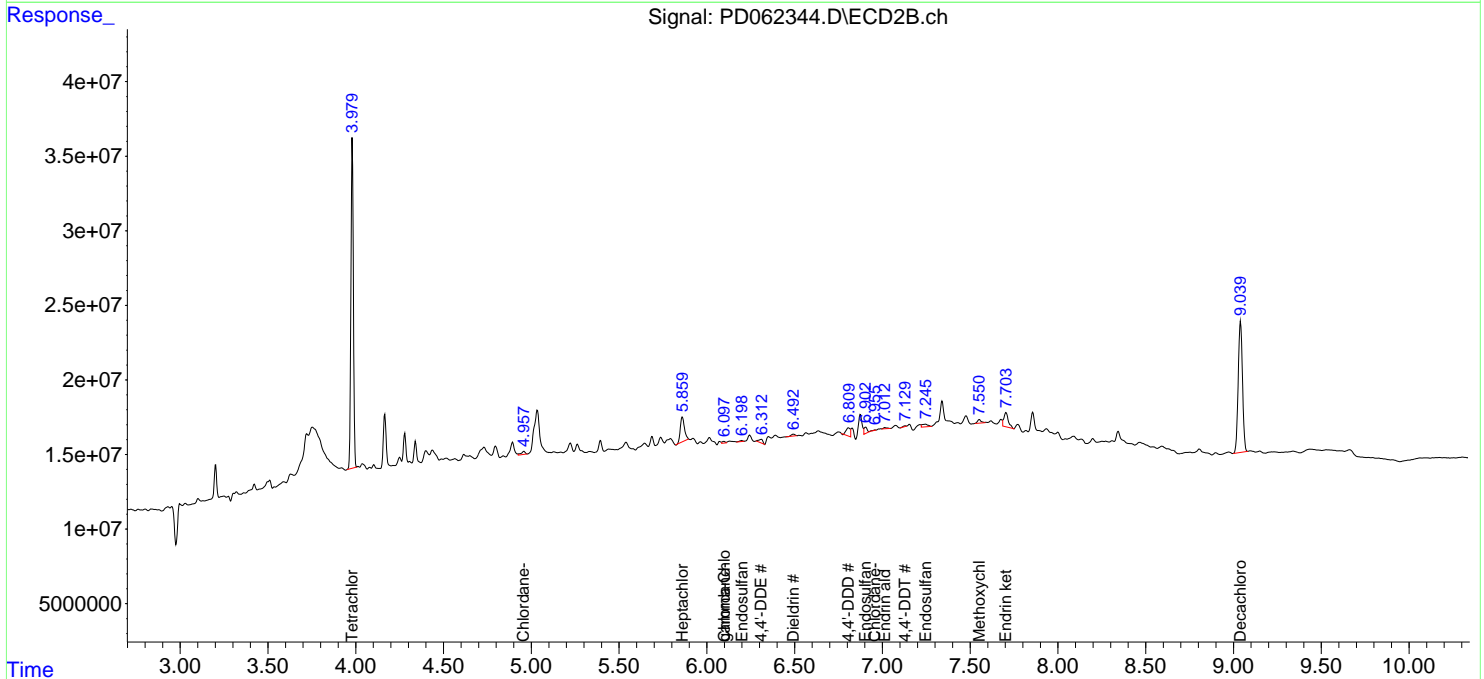
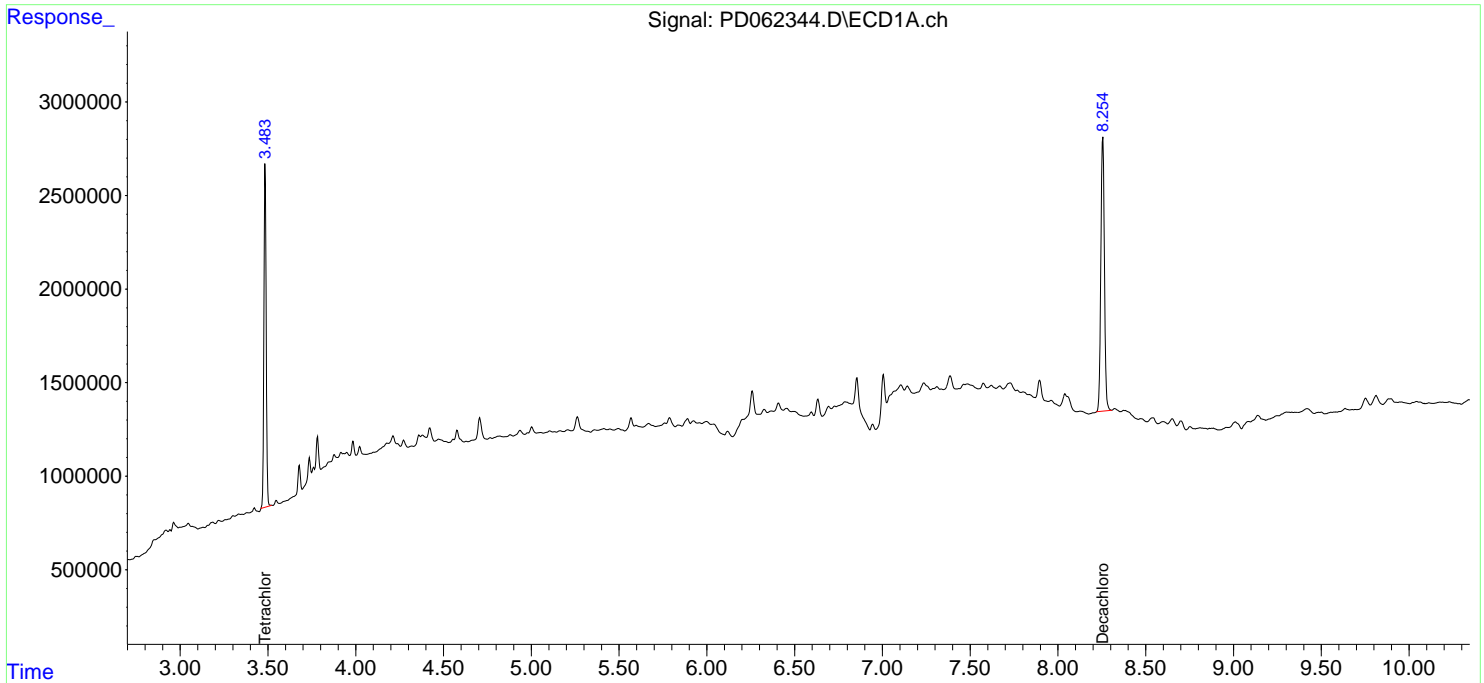
System Monitoring Compounds							
1)	SA Tetrachlo...	3.484	3.981	16705044	215.7E6	20.510	20.479
28)	SA Decachlor...	8.256	9.040	20732473	149.4E6	17.091	17.611
Target Compounds							
8)	B Heptachlo...	0.000	5.860	0 27802891		N.D.	2.024 #
9)	A Endosulfan I	0.000	6.200	0 853735		N.D.	0.065 #
10)	B gamma-Chl...	0.000	6.096	0 1395093		N.D.	0.099 #
12)	B 4,4'-DDE	0.000	6.311	0 3881786		N.D.	0.275 #
13)	MA Dieldrin	0.000	6.494f	0 1984989		N.D.	0.141 #
15)	B Endosulfa...	0.000	6.905	0 5544143		N.D.	0.482 #
16)	A 4,4'-DDD	0.000	6.807	0 9003474		N.D.	0.808 #
17)	MA 4,4'-DDT	0.000	7.130f	0 579186		N.D.	0.058 #
18)	B Endrin al...	0.000	7.014	0 1131857		N.D.	0.120 #
19)	B Endosulfa...	0.000	7.247	0 4311717		N.D.	0.397 #
20)	A Methoxychlor	0.000	7.552	0 3537226		N.D.	0.724 #
21)	B Endrin ke...	0.000	7.704	0 16537210		N.D.	1.648 #
23)	Chlordane-1	0.000	4.958f	0 3525123		N.D.	7.140 #
25)	Chlordane-3	0.000	6.096	0 1395093		N.D.	0.710 #
27)	Chlordane-5	0.000	6.957	0 389408		N.D.	0.946 #

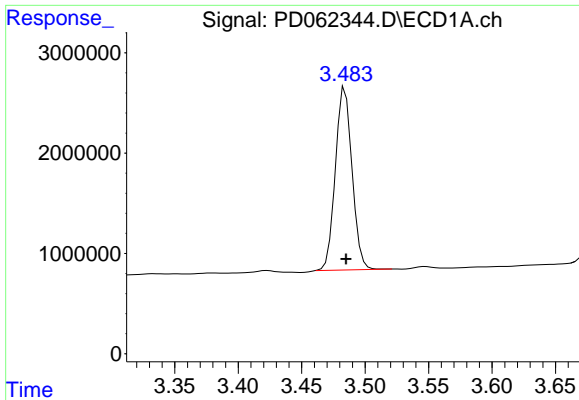
(f)=RT Delta > 1/2 Window (#)=Amounts differ by > 25% (m)=manual int.

Data Path : Z:\pestpcbsrv\HPCHEM1\ECD_D\Data\PD042421\
 Data File : PD062344.D
 Signal(s) : Signal #1: ECD1A.ch Signal #2: ECD2B.ch
 Acq On : 24 Apr 2021 11:46
 Operator : AR\AJ
 Sample : M2107-03
 Misc :
 ALS Vial : 14 Sample Multiplier: 1

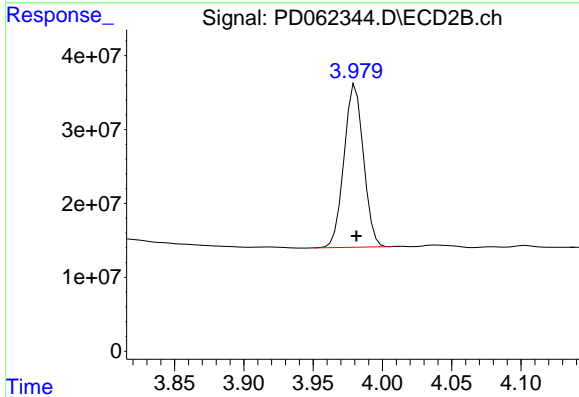
Integration File signal 1: autoint1.e
 Integration File signal 2: autoint2.e
 Quant Time: Apr 26 06:50:34 2021
 Quant Method : Z:\pestpcbsrv\HPCHEM1\ECD_D\Method\PD042321.M
 Quant Title : GC Extractables
 QLast Update : Fri Apr 23 23:19:57 2021
 Response via : Initial Calibration
 Integrator: ChemStation

Volume Inj. : 2 µl
 Signal #1 Phase : ZB-MR2 Signal #2 Phase: ZB-MR1
 Signal #1 Info : 30M x 0.32mm x0.2 Signal #2 Info : 30M x 0.32mm x 0.50µm

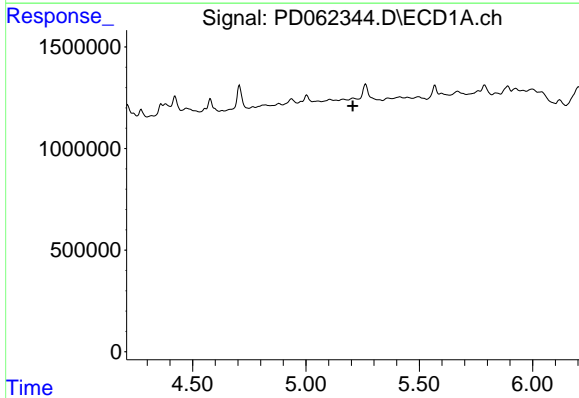




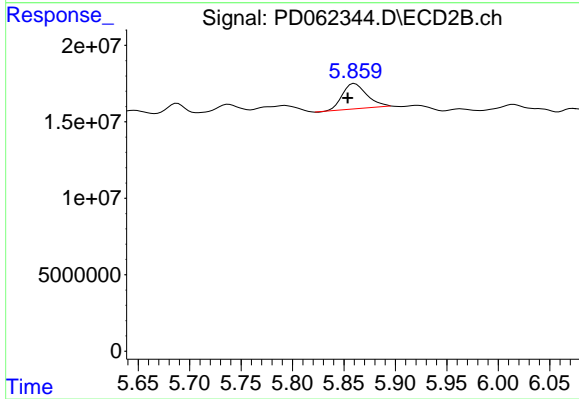
#1 Tetrachloro-m-xylene
 R.T.: 3.484 min
 Delta R.T.: 0.000 min
 Response: 16705044
 Conc: 20.51 ng/ml



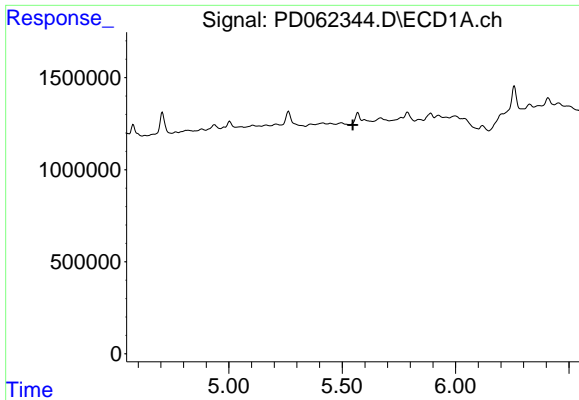
#1 Tetrachloro-m-xylene
 R.T.: 3.981 min
 Delta R.T.: 0.000 min
 Response: 215665990
 Conc: 20.48 ng/ml



#8 Heptachlor epoxide
 R.T.: 0.000 min
 Exp R.T. : 5.206 min
 Response: 0
 Conc: N.D.

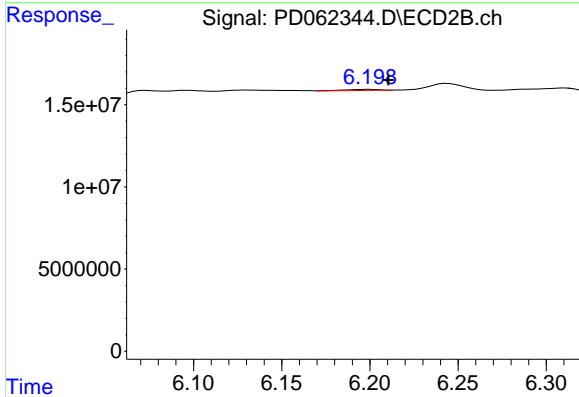


#8 Heptachlor epoxide
 R.T.: 5.860 min
 Delta R.T.: 0.007 min
 Response: 27802891
 Conc: 2.02 ng/ml



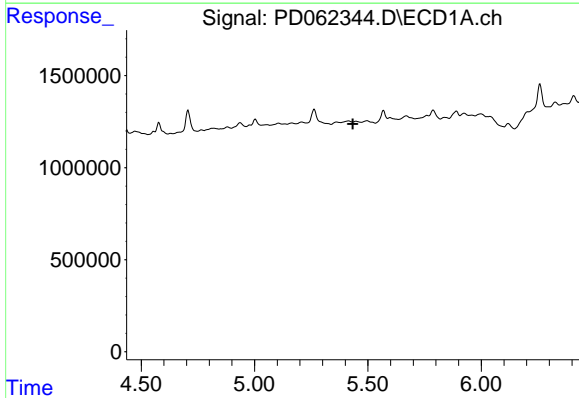
#9 Endosulfan I

R.T.: 0.000 min
 Exp R.T. : 5.547 min
 Response: 0
 Conc: N.D.



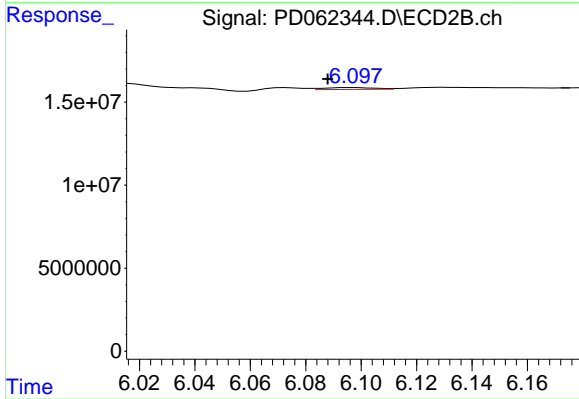
#9 Endosulfan I

R.T.: 6.200 min
 Delta R.T.: -0.011 min
 Response: 853735
 Conc: 0.07 ng/ml



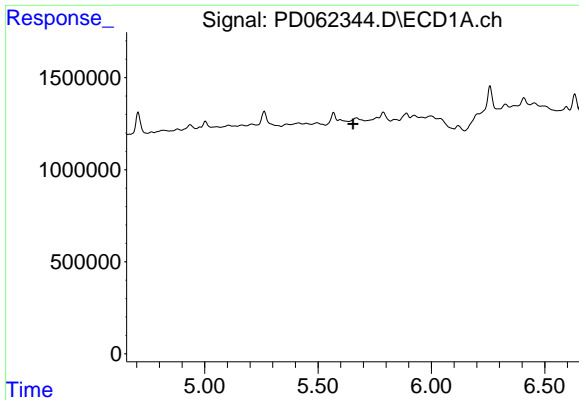
#10 gamma-Chlordane

R.T.: 0.000 min
 Exp R.T. : 5.434 min
 Response: 0
 Conc: N.D.



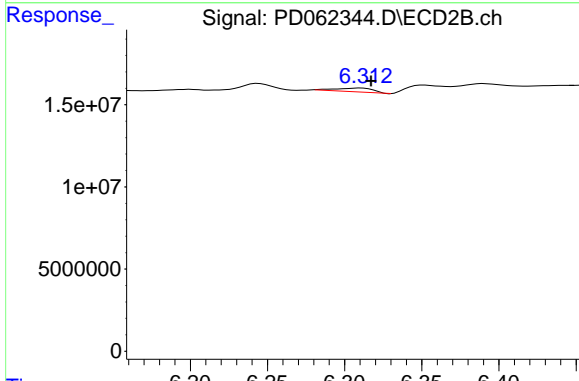
#10 gamma-Chlordane

R.T.: 6.096 min
 Delta R.T.: 0.009 min
 Response: 1395093
 Conc: 0.10 ng/ml



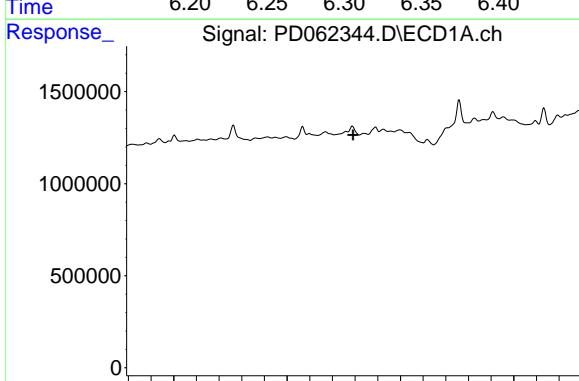
#12 4,4'-DDE

R.T.: 0.000 min
 Exp R.T. : 5.655 min
 Response: 0
 Conc: N.D.



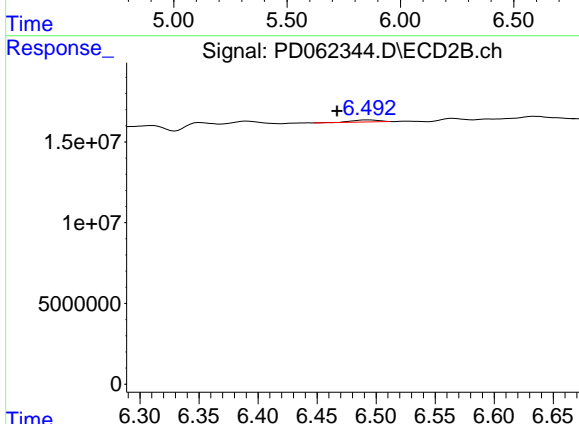
#12 4,4'-DDE

R.T.: 6.311 min
 Delta R.T.: -0.006 min
 Response: 3881786
 Conc: 0.27 ng/ml



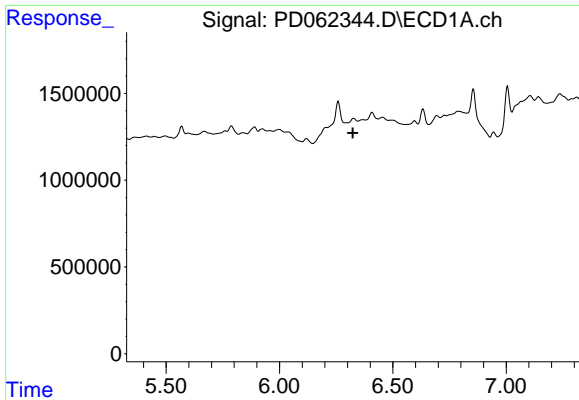
#13 Dieldrin

R.T.: 0.000 min
 Exp R.T. : 5.791 min
 Response: 0
 Conc: N.D.



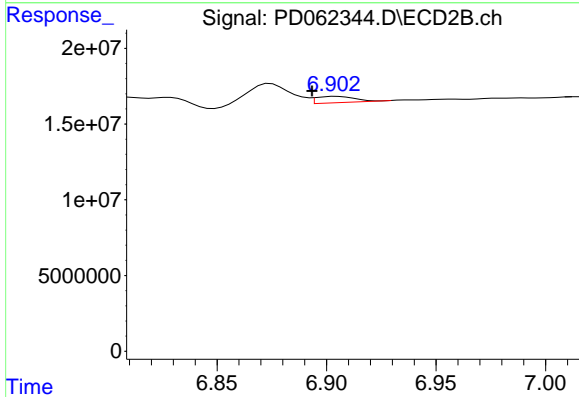
#13 Dieldrin

R.T.: 6.494 min
 Delta R.T.: 0.027 min
 Response: 1984989
 Conc: 0.14 ng/ml



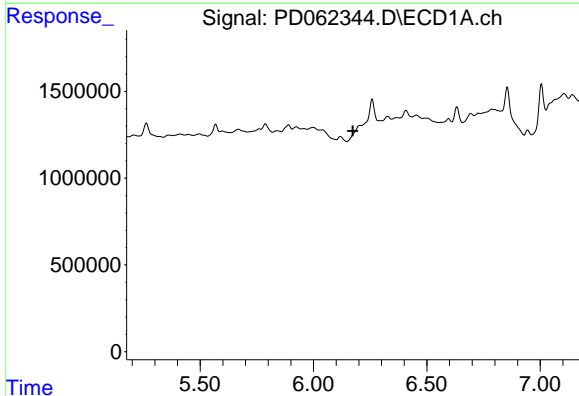
#15 Endosulfan II

R.T.: 0.000 min
Exp R.T. : 6.323 min
Response: 0
Conc: N.D.



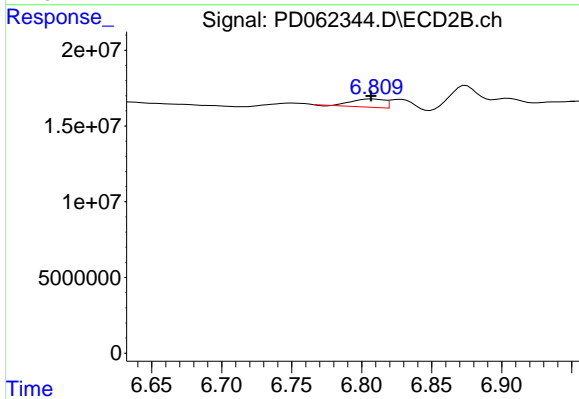
#15 Endosulfan II

R.T.: 6.905 min
Delta R.T.: 0.011 min
Response: 5544143
Conc: 0.48 ng/ml



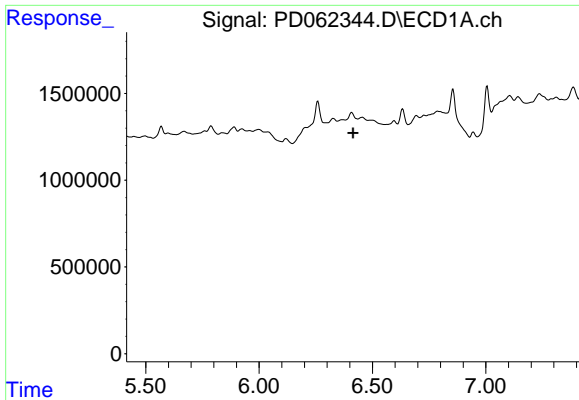
#16 4,4'-DDD

R.T.: 0.000 min
Exp R.T. : 6.173 min
Response: 0
Conc: N.D.

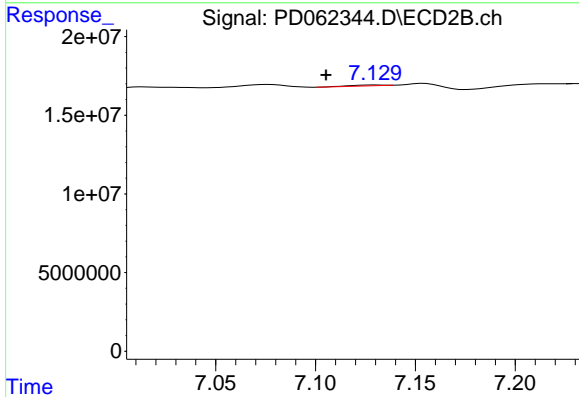


#16 4,4'-DDD

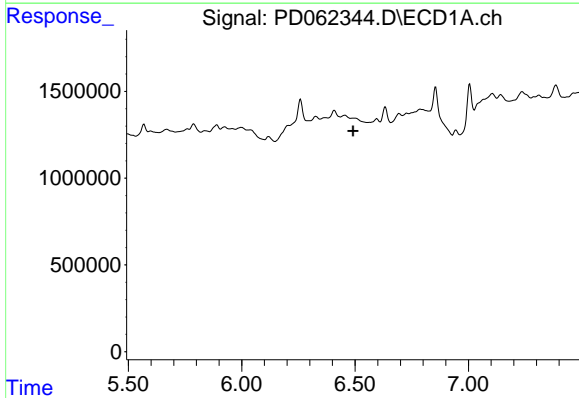
R.T.: 6.807 min
Delta R.T.: 0.000 min
Response: 9003474
Conc: 0.81 ng/ml



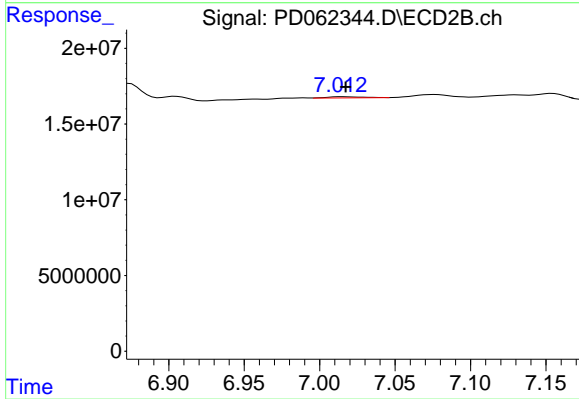
#17 4,4'-DDT
 R.T.: 0.000 min
 Exp R.T. : 6.415 min
 Response: 0
 Conc: N.D.



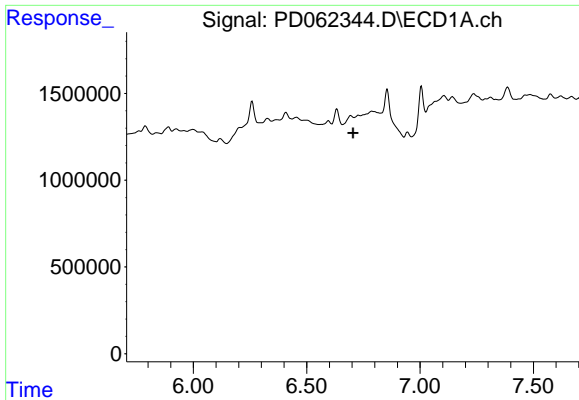
#17 4,4'-DDT
 R.T.: 7.130 min
 Delta R.T.: 0.024 min
 Response: 579186
 Conc: 0.06 ng/ml



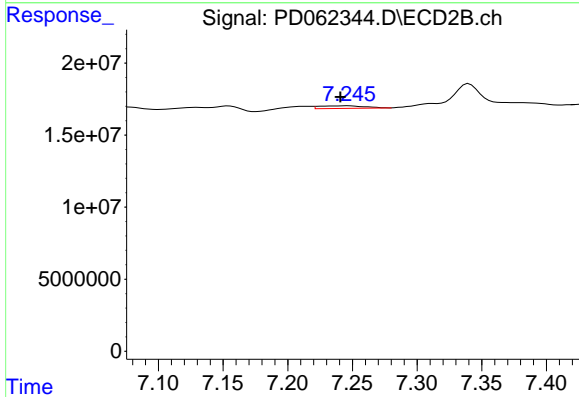
#18 Endrin aldehyde
 R.T.: 0.000 min
 Exp R.T. : 6.492 min
 Response: 0
 Conc: N.D.



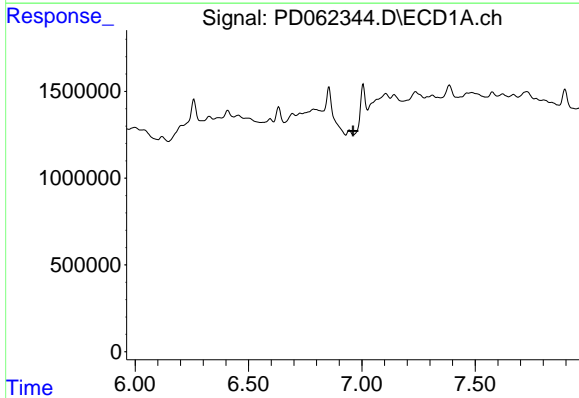
#18 Endrin aldehyde
 R.T.: 7.014 min
 Delta R.T.: -0.003 min
 Response: 1131857
 Conc: 0.12 ng/ml



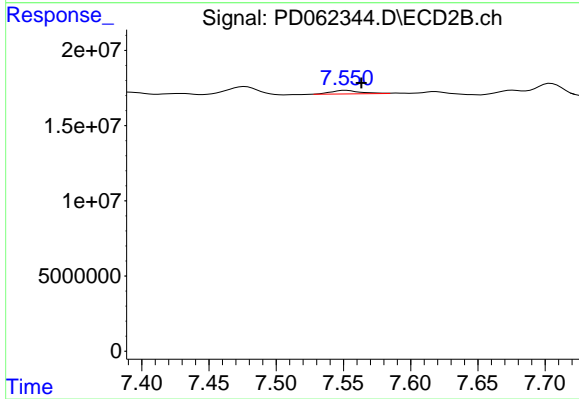
#19 Endosulfan Sulfate
 R.T.: 0.000 min
 Exp R.T. : 6.705 min
 Response: 0
 Conc: N.D.



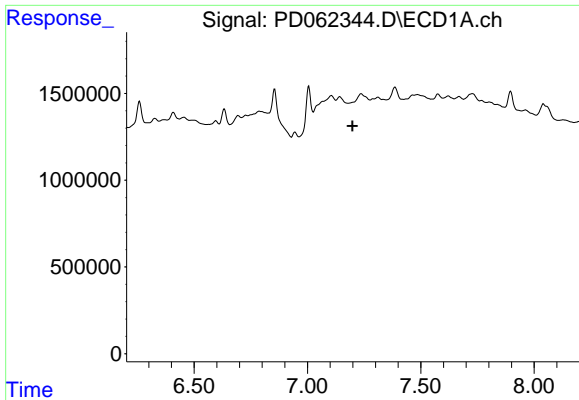
#19 Endosulfan Sulfate
 R.T.: 7.247 min
 Delta R.T.: 0.006 min
 Response: 4311717
 Conc: 0.40 ng/ml



#20 Methoxychlor
 R.T.: 0.000 min
 Exp R.T. : 6.962 min
 Response: 0
 Conc: N.D.

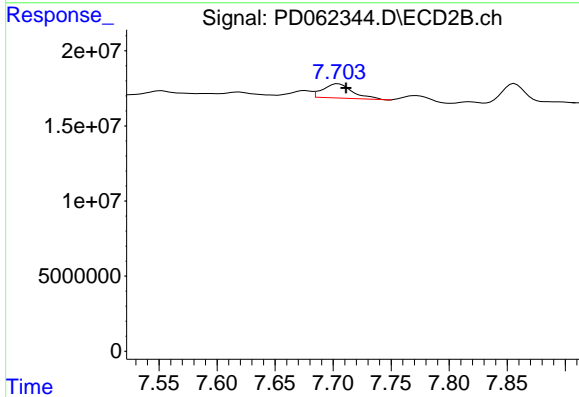


#20 Methoxychlor
 R.T.: 7.552 min
 Delta R.T.: -0.012 min
 Response: 3537226
 Conc: 0.72 ng/ml



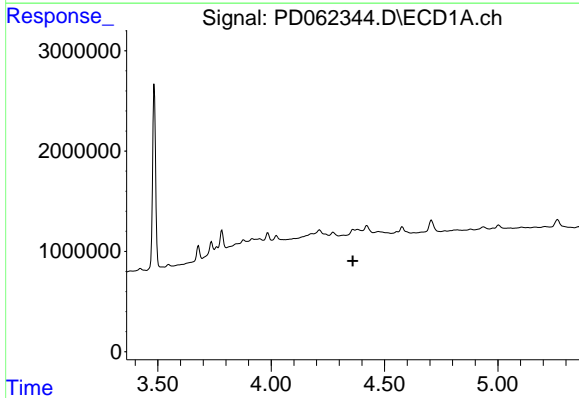
#21 Endrin ketone

R.T.: 0.000 min
 Exp R.T. : 7.199 min
 Response: 0
 Conc: N.D.



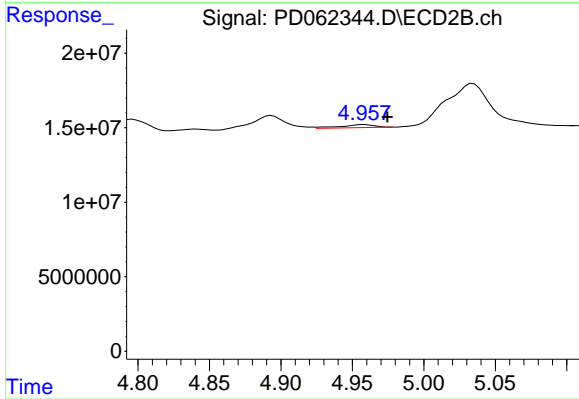
#21 Endrin ketone

R.T.: 7.704 min
 Delta R.T.: -0.007 min
 Response: 16537210
 Conc: 1.65 ng/ml



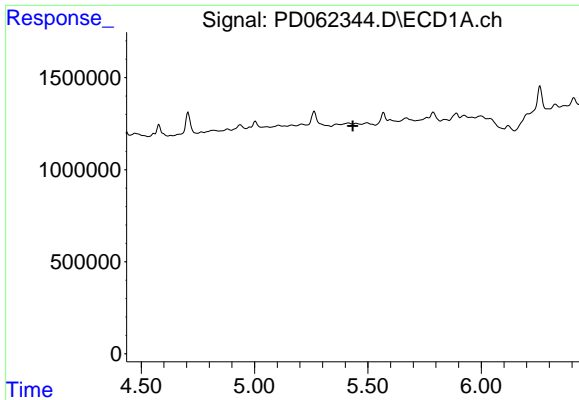
#23 Chlordane-1

R.T.: 0.000 min
 Exp R.T. : 4.360 min
 Response: 0
 Conc: N.D.



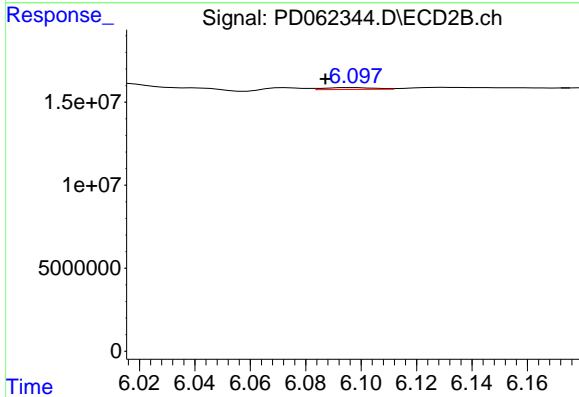
#23 Chlordane-1

R.T.: 4.958 min
 Delta R.T.: -0.016 min
 Response: 3525123
 Conc: 7.14 ng/ml



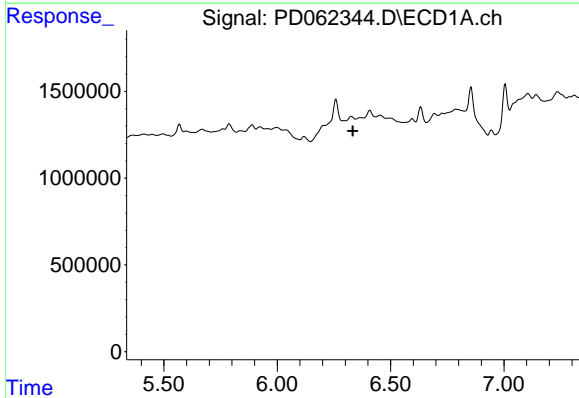
#25 Chlordane-3

R.T.: 0.000 min
 Exp R.T. : 5.434 min
 Response: 0
 Conc: N.D.



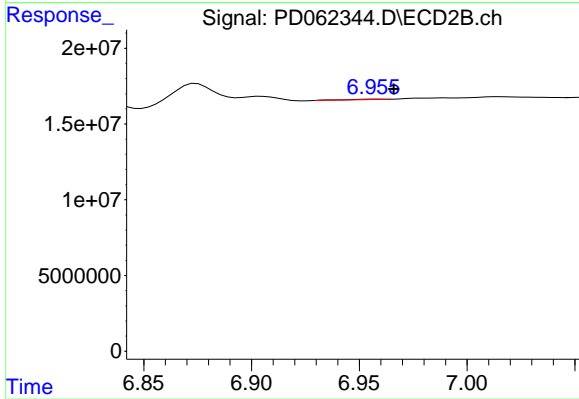
#25 Chlordane-3

R.T.: 6.096 min
 Delta R.T.: 0.009 min
 Response: 1395093
 Conc: 0.71 ng/ml



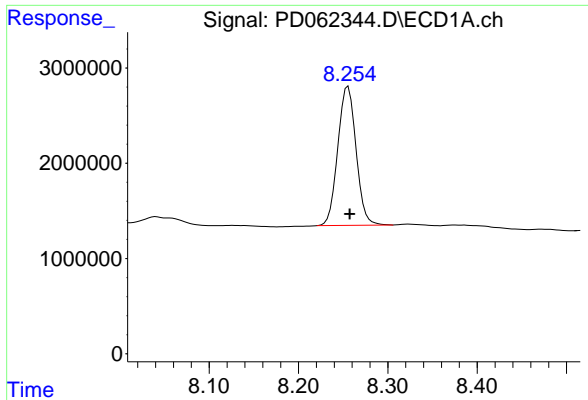
#27 Chlordane-5

R.T.: 0.000 min
 Exp R.T. : 6.333 min
 Response: 0
 Conc: N.D.



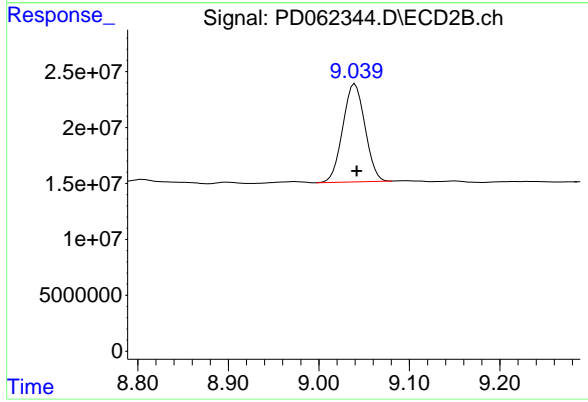
#27 Chlordane-5

R.T.: 6.957 min
 Delta R.T.: -0.009 min
 Response: 389408
 Conc: 0.95 ng/ml



#28 Decachlorobiphenyl

R.T.: 8.256 min
Delta R.T.: -0.002 min
Response: 20732473
Conc: 17.09 ng/ml



#28 Decachlorobiphenyl

R.T.: 9.040 min
Delta R.T.: -0.002 min
Response: 149426740
Conc: 17.61 ng/ml