

Data Path : Z:\pestpcbsrv\HPCHEM1\ECD\_L\Data\PL042621\  
 Data File : PL066483.D  
 Signal(s) : Signal #1: ECD1A.ch Signal #2: ECD2B.ch  
 Acq On : 26 Apr 2021 20:16  
 Operator : AR\AJ  
 Sample : PSTDICV050  
 Misc :  
 ALS Vial : 20 Sample Multiplier: 1

Integration File signal 1: autoint1.e  
 Integration File signal 2: autoint2.e  
 Quant Time: Apr 27 02:46:07 2021  
 Quant Method : Z:\pestpcbsrv\HPCHEM1\ECD\_L\methods\PL042621.M  
 Quant Title : GC Extractables  
 QLast Update : Tue Apr 27 02:36:03 2021  
 Response via : Initial Calibration  
 Integrator: ChemStation

Volume Inj. : 1 µl  
 Signal #1 Phase : ZB-MR2 Signal #2 Phase: ZB-MR1  
 Signal #1 Info : 30M x 0.32mm x0.2 Signal #2 Info : 30M x 0.32mm x0.5µm

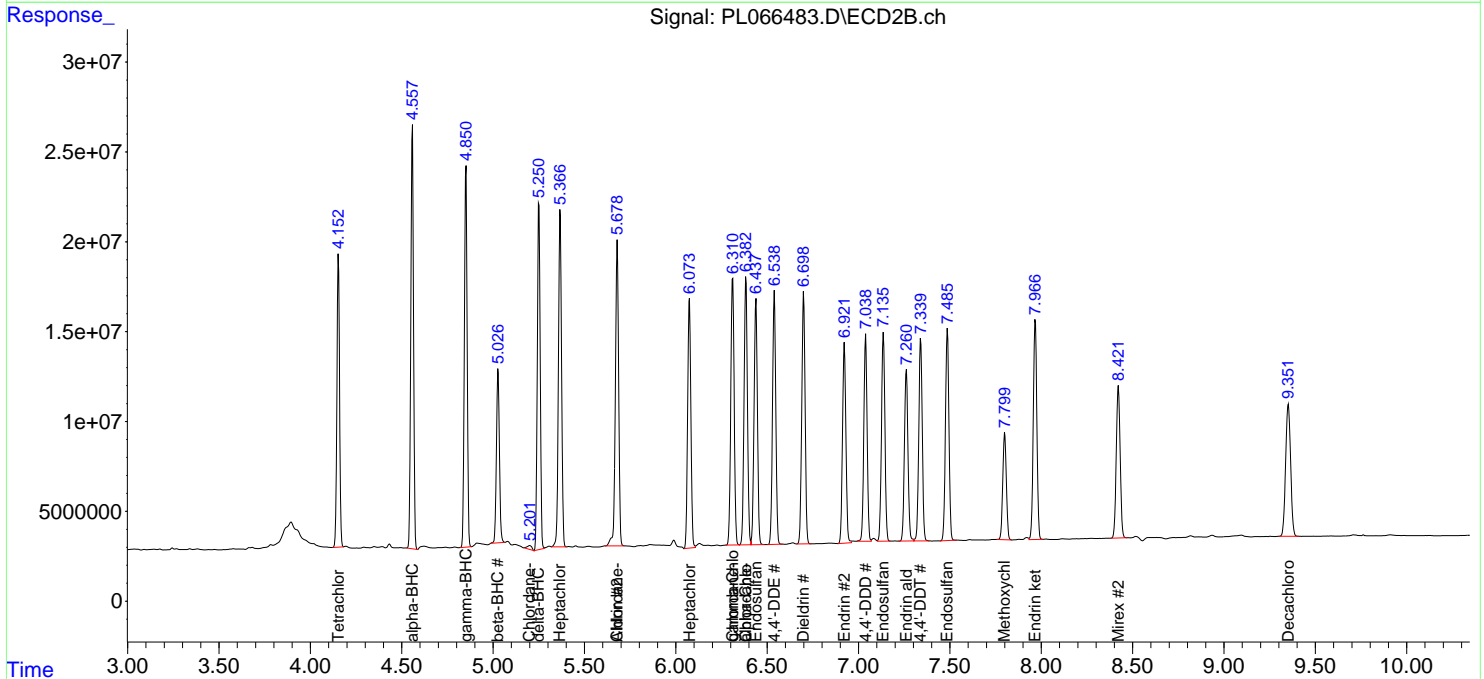
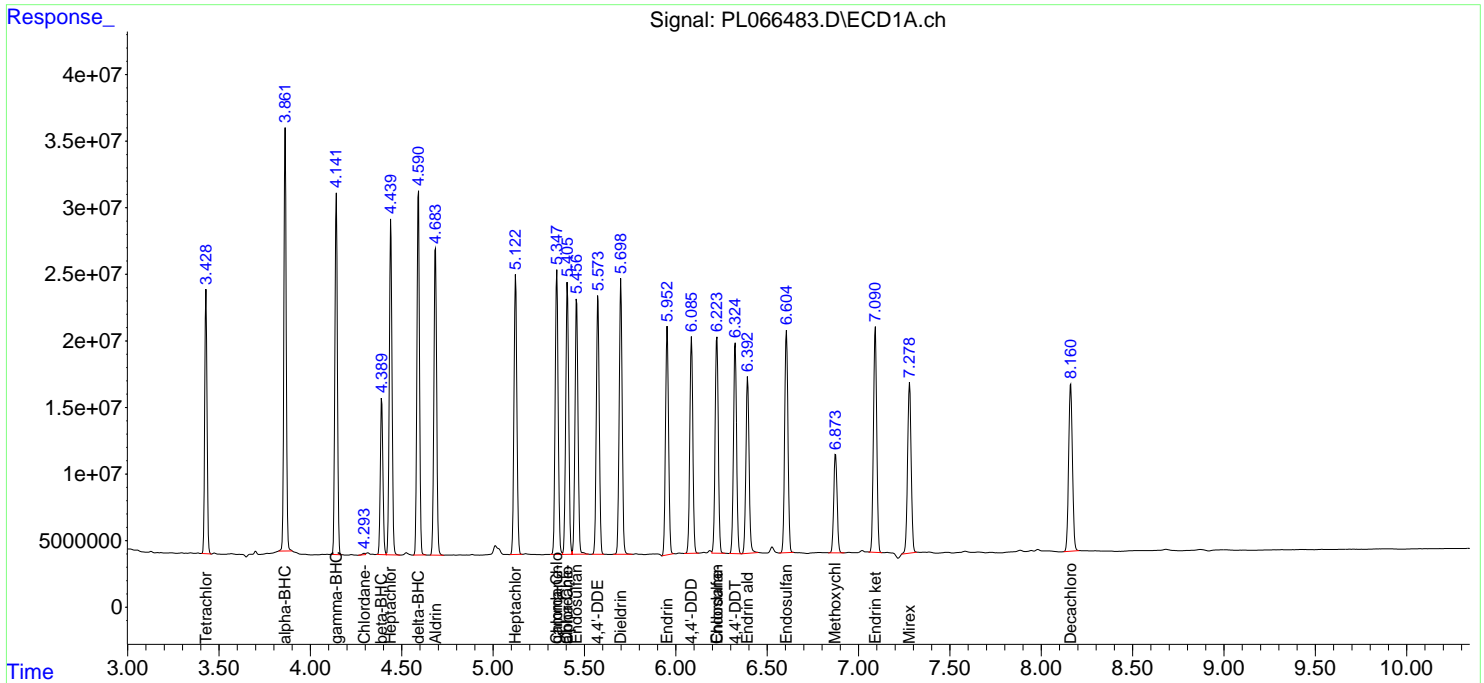
	Compound	RT#1	RT#2	Resp#1	Resp#2	ng/ml	ng/ml
-----							
System Monitoring Compounds							
1)	SA Tetrachlo...	3.429	4.154	173.3E6	165.5E6	45.996	47.137
28)	SA Decachlor...	8.161	9.352	182.7E6	139.3E6	47.658	45.020
Target Compounds							
2)	A alpha-BHC	3.862	4.558	289.2E6	243.1E6	46.476	47.260
3)	MA gamma-BHC...	4.142	4.851	259.6E6	226.0E6	47.184	46.844
4)	MA Heptachlor	4.440	5.367	261.1E6	224.1E6	46.762	45.385
5)	MB Aldrin	4.684	5.680	247.9E6	211.0E6	47.522	45.130
6)	B beta-BHC	4.391	5.027	115.7E6	110.4E6	43.722	47.642
7)	B delta-BHC	4.591	5.251	269.5E6	212.2E6	47.366	47.899
8)	Heptachlo...	5.123	6.075	232.6E6	170.9E6	47.498	46.206
9)	A Endosulfan I	5.457	6.439	220.2E6	175.2E6	47.730	46.009
10)	B gamma-Chl...	5.349	6.311	240.2E6	190.9E6	47.146	45.867
11)	B alpha-Chl...	5.407	6.384	233.5E6	189.5E6	47.432	45.686
12)	B 4,4'-DDE	5.574	6.539	219.0E6	175.7E6	47.985	46.301
13)	MA Dieldrin	5.699	6.700	233.7E6	178.3E6	48.174	45.546
14)	MA Endrin	5.953	6.922	201.7E6	143.9E6	46.294	45.910
15)	B Endosulfa...	6.225	7.136	196.1E6	150.4E6	47.531	45.529
16)	A 4,4'-DDD	6.086	7.039	186.2E6	144.8E6	49.017	46.486
17)	MA 4,4'-DDT	6.325	7.340	188.7E6	148.6E6	48.386	45.923
18)	B Endrin al...	6.393	7.262	161.1E6	128.1E6	47.548	45.791
19)	B Endosulfa...	6.605	7.486	207.7E6	157.0E6	48.070	45.905
20)	A Methoxychlor	6.874	7.800	95282356	80606099	48.507	44.936
21)	B Endrin ke...	7.092	7.967	211.2E6	165.1E6	48.205	46.529
22)	Mirex	7.279	8.422	175.4E6	126.0E6	47.744	45.152
23)	Chlordane-1	4.295	5.200f	1083841	3920505	7.647	26.722 #
24)	Chlordane-2	0.000	5.680f	0	211.0E6	N.D.	1256.392 #
25)	Chlordane-3	5.349	6.311	240.2E6	190.9E6	509.598	352.739 #
26)	Chlordane-4	5.407	6.384	233.5E6	189.5E6	587.269	290.798 #
27)	Chlordane-5	6.225	0.000	196.1E6	0	1216.469	N.D. #

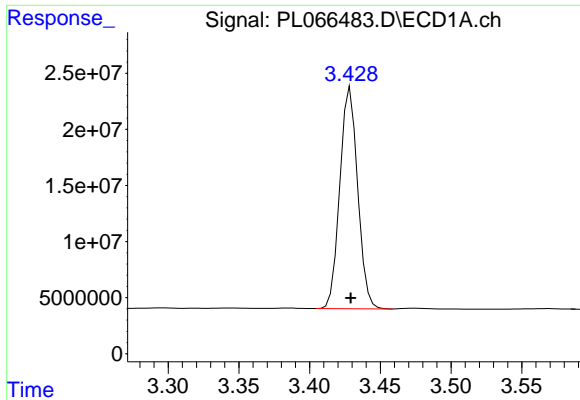
(f)=RT Delta > 1/2 Window (#)=Amounts differ by > 25% (m)=manual int.

Data Path : Z:\pestpcbsrv\HPCHEM1\ECD\_L\Data\PL042621\  
 Data File : PL066483.D  
 Signal(s) : Signal #1: ECD1A.ch Signal #2: ECD2B.ch  
 Acq On : 26 Apr 2021 20:16  
 Operator : AR\AJ  
 Sample : PSTDICV050  
 Misc :  
 ALS Vial : 20 Sample Multiplier: 1

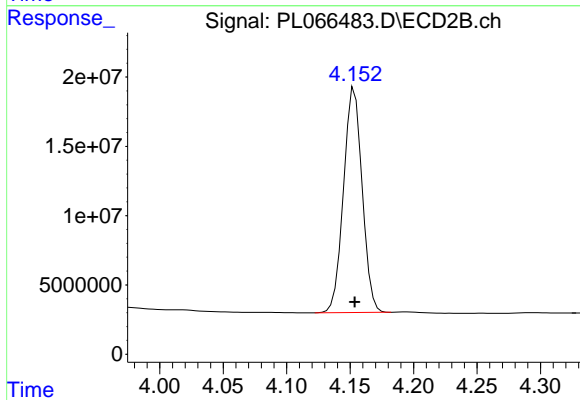
Integration File signal 1: autoint1.e  
 Integration File signal 2: autoint2.e  
 Quant Time: Apr 27 02:46:07 2021  
 Quant Method : Z:\pestpcbsrv\HPCHEM1\ECD\_L\methods\PL042621.M  
 Quant Title : GC Extractables  
 QLast Update : Tue Apr 27 02:36:03 2021  
 Response via : Initial Calibration  
 Integrator: ChemStation

Volume Inj. : 1 µl  
 Signal #1 Phase : ZB-MR2 Signal #2 Phase: ZB-MR1  
 Signal #1 Info : 30M x 0.32mm x0.2 Signal #2 Info : 30M x 0.32mm x0.5µm

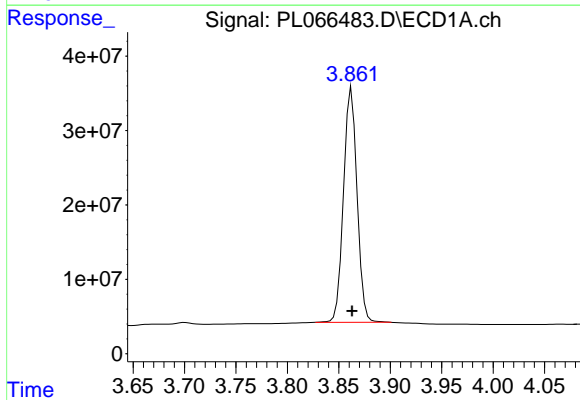




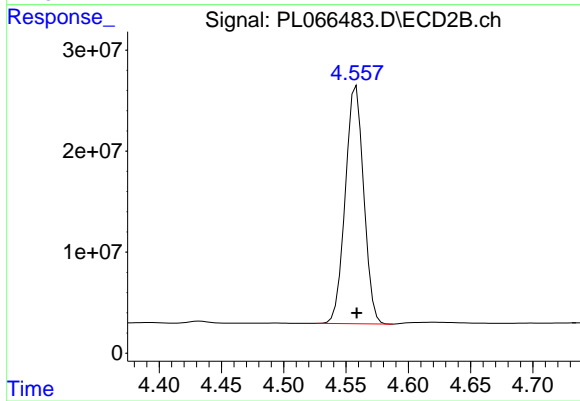
#1 Tetrachloro-m-xylene  
R.T.: 3.429 min  
Delta R.T.: 0.000 min  
Response: 173315633  
Conc: 46.00 ng/ml



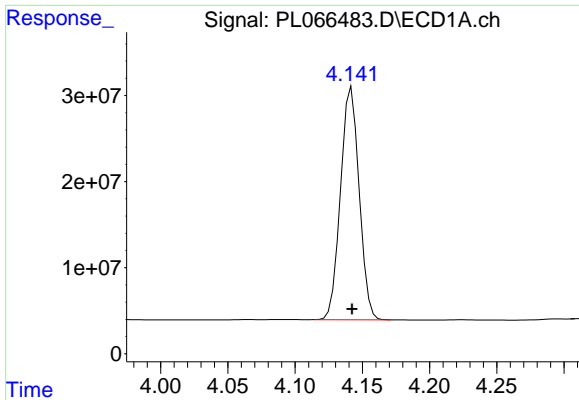
#1 Tetrachloro-m-xylene  
R.T.: 4.154 min  
Delta R.T.: 0.000 min  
Response: 165546723  
Conc: 47.14 ng/ml



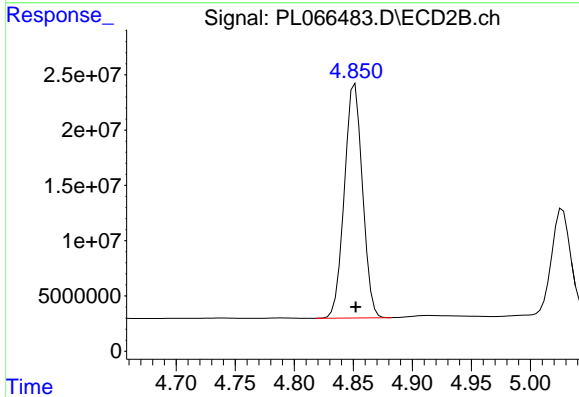
#2 alpha-BHC  
R.T.: 3.862 min  
Delta R.T.: 0.000 min  
Response: 289223619  
Conc: 46.48 ng/ml



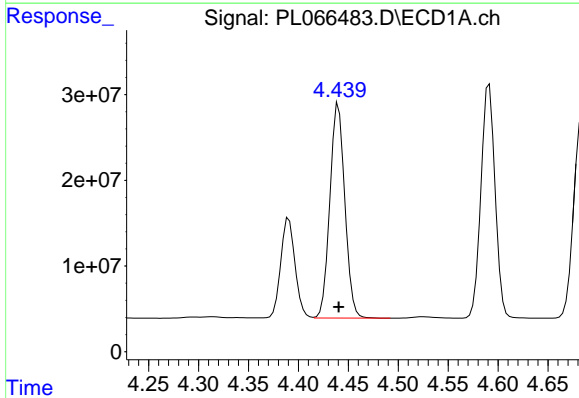
#2 alpha-BHC  
R.T.: 4.558 min  
Delta R.T.: 0.000 min  
Response: 243129631  
Conc: 47.26 ng/ml



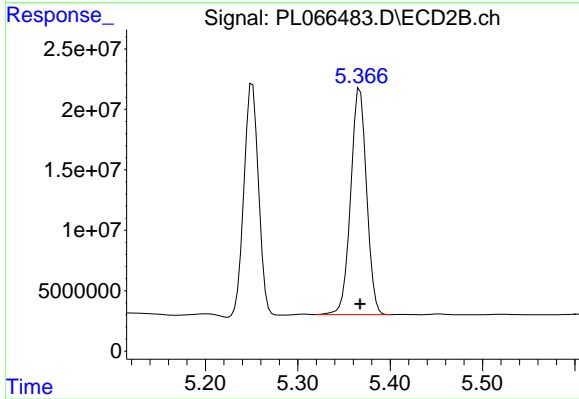
#3 gamma-BHC (Lindane)  
R.T.: 4.142 min  
Delta R.T.: 0.000 min  
Response: 259612329  
Conc: 47.18 ng/ml



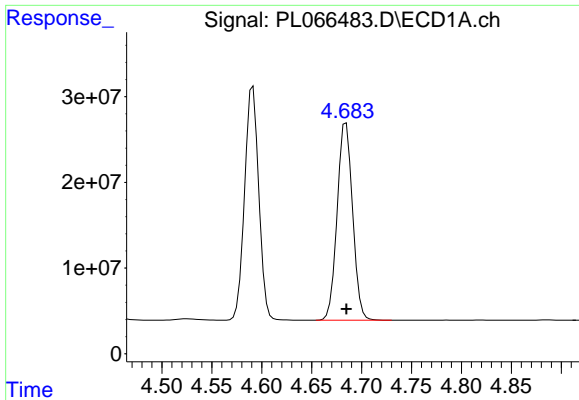
#3 gamma-BHC (Lindane)  
R.T.: 4.851 min  
Delta R.T.: 0.000 min  
Response: 225978148  
Conc: 46.84 ng/ml



#4 Heptachlor  
R.T.: 4.440 min  
Delta R.T.: 0.000 min  
Response: 261083233  
Conc: 46.76 ng/ml

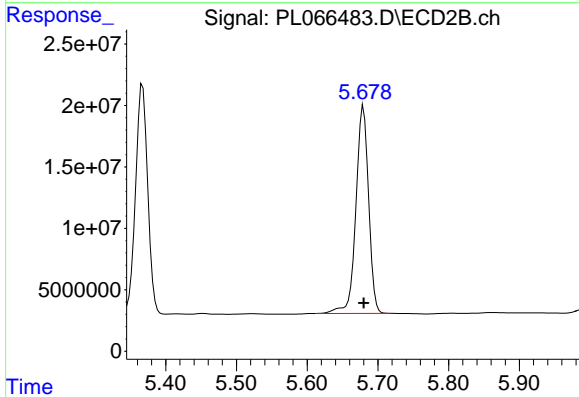


#4 Heptachlor  
R.T.: 5.367 min  
Delta R.T.: 0.000 min  
Response: 224062136  
Conc: 45.38 ng/ml



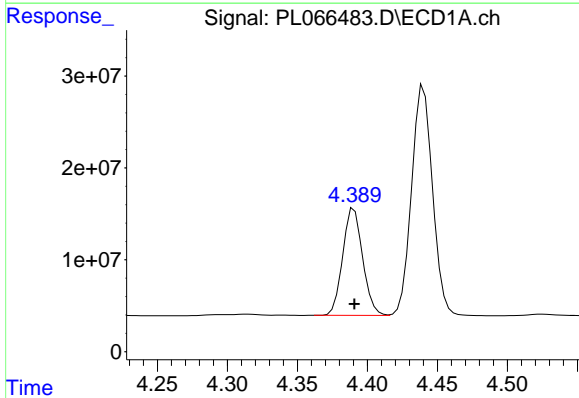
#5 Aldrin

R.T.: 4.684 min  
Delta R.T.: 0.000 min  
Response: 247854165  
Conc: 47.52 ng/ml



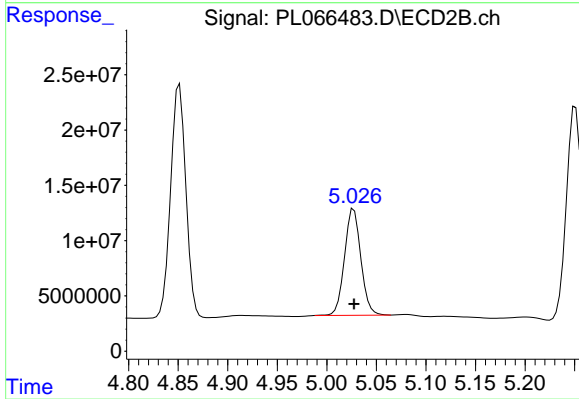
#5 Aldrin

R.T.: 5.680 min  
Delta R.T.: 0.000 min  
Response: 210987312  
Conc: 45.13 ng/ml



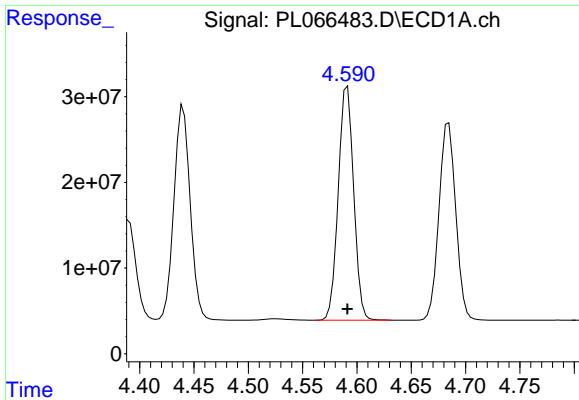
#6 beta-BHC

R.T.: 4.391 min  
Delta R.T.: 0.000 min  
Response: 115657455  
Conc: 43.72 ng/ml



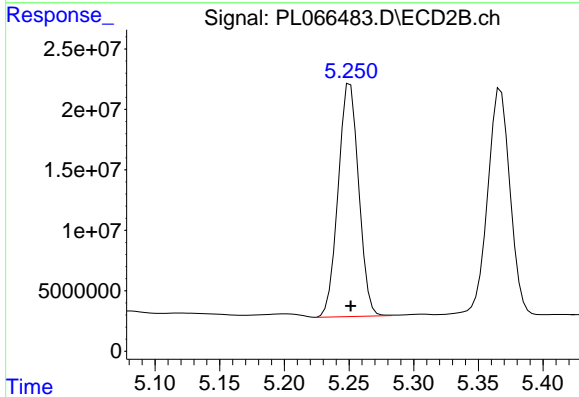
#6 beta-BHC

R.T.: 5.027 min  
Delta R.T.: 0.000 min  
Response: 110377061  
Conc: 47.64 ng/ml



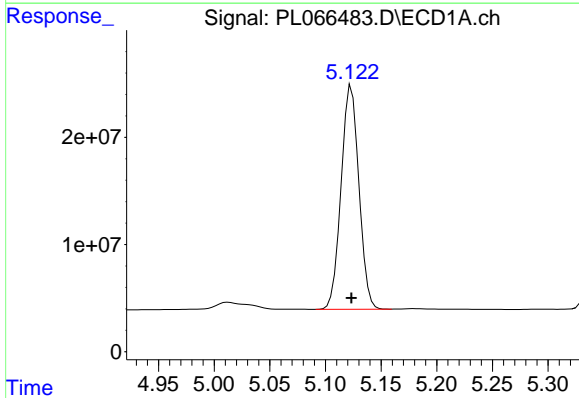
#7 delta-BHC

R.T.: 4.591 min  
Delta R.T.: 0.000 min  
Response: 269477988  
Conc: 47.37 ng/ml



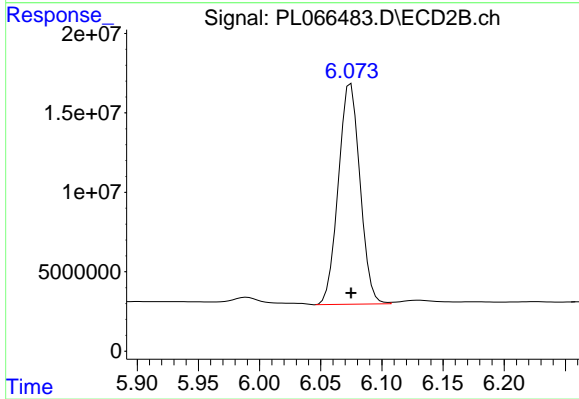
#7 delta-BHC

R.T.: 5.251 min  
Delta R.T.: 0.000 min  
Response: 212188037  
Conc: 47.90 ng/ml



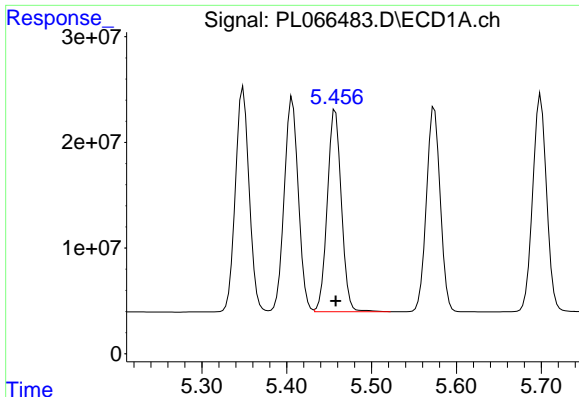
#8 Heptachlor epoxide

R.T.: 5.123 min  
Delta R.T.: 0.000 min  
Response: 232609472  
Conc: 47.50 ng/ml



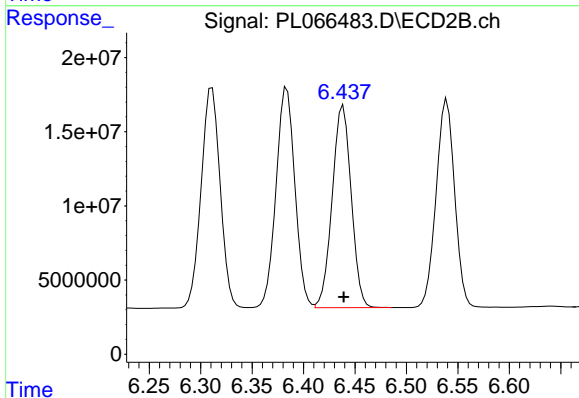
#8 Heptachlor epoxide

R.T.: 6.075 min  
Delta R.T.: 0.000 min  
Response: 170945273  
Conc: 46.21 ng/ml



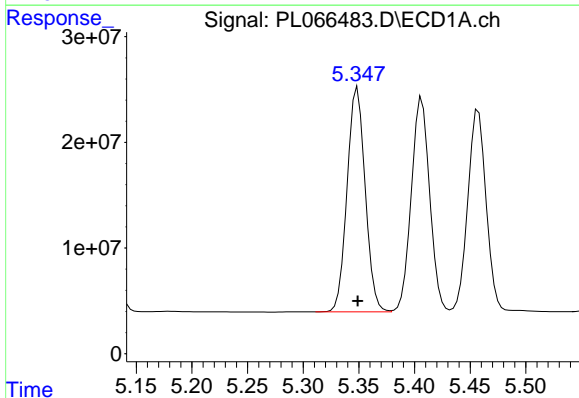
#9 Endosulfan I

R.T.: 5.457 min  
Delta R.T.: 0.000 min  
Response: 220214167  
Conc: 47.73 ng/ml



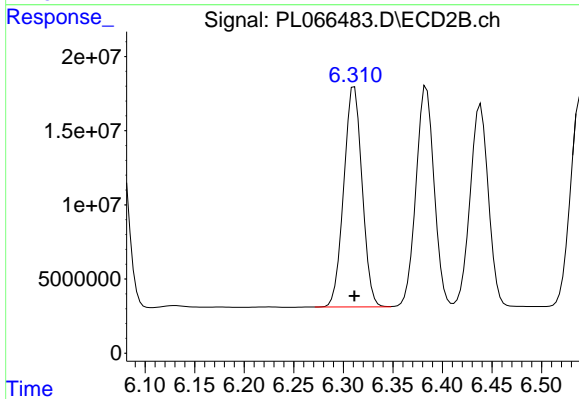
#9 Endosulfan I

R.T.: 6.439 min  
Delta R.T.: 0.000 min  
Response: 175210762  
Conc: 46.01 ng/ml



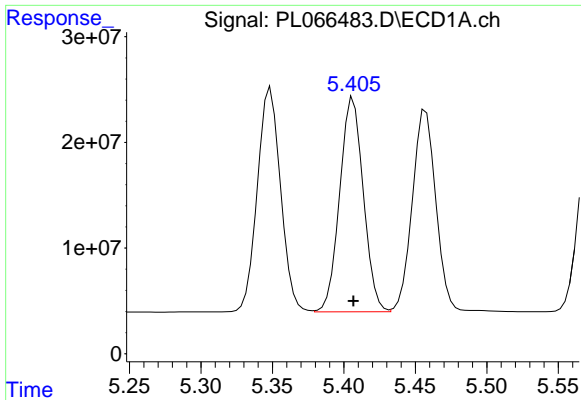
#10 gamma-Chlordane

R.T.: 5.349 min  
Delta R.T.: 0.000 min  
Response: 240247463  
Conc: 47.15 ng/ml



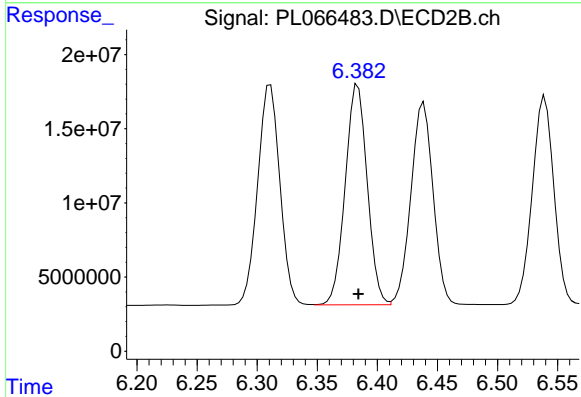
#10 gamma-Chlordane

R.T.: 6.311 min  
Delta R.T.: 0.000 min  
Response: 190935445  
Conc: 45.87 ng/ml



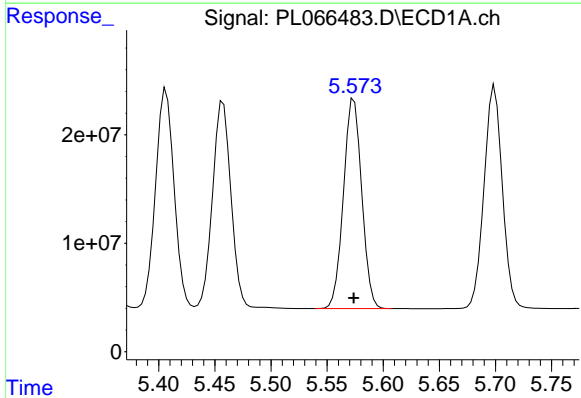
#11 alpha-Chlordane

R.T.: 5.407 min  
Delta R.T.: 0.000 min  
Response: 233545524  
Conc: 47.43 ng/ml



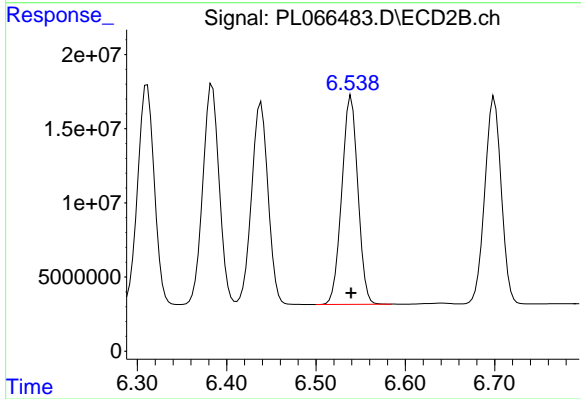
#11 alpha-Chlordane

R.T.: 6.384 min  
Delta R.T.: 0.000 min  
Response: 189517932  
Conc: 45.69 ng/ml



#12 4,4'-DDE

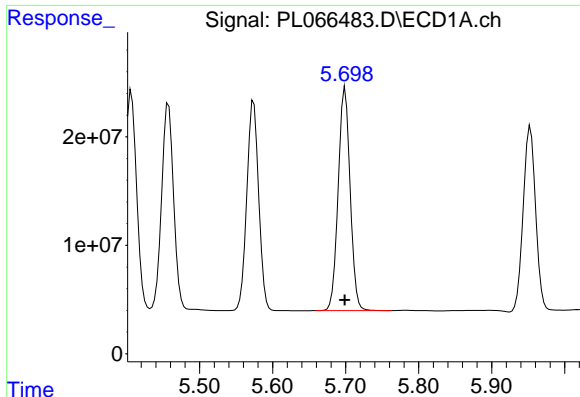
R.T.: 5.574 min  
Delta R.T.: 0.000 min  
Response: 218954004  
Conc: 47.99 ng/ml



#12 4,4'-DDE

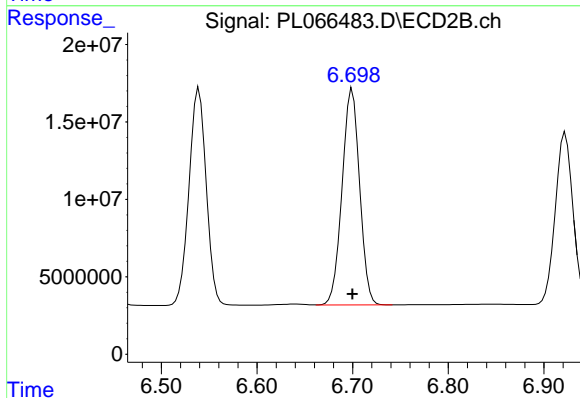
R.T.: 6.539 min  
Delta R.T.: 0.000 min  
Response: 175673961  
Conc: 46.30 ng/ml





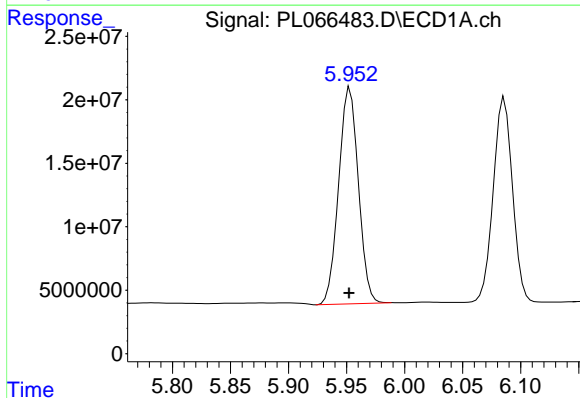
#13 Dieldrin

R.T.: 5.699 min  
 Delta R.T.: 0.000 min  
 Response: 233719199  
 Conc: 48.17 ng/ml



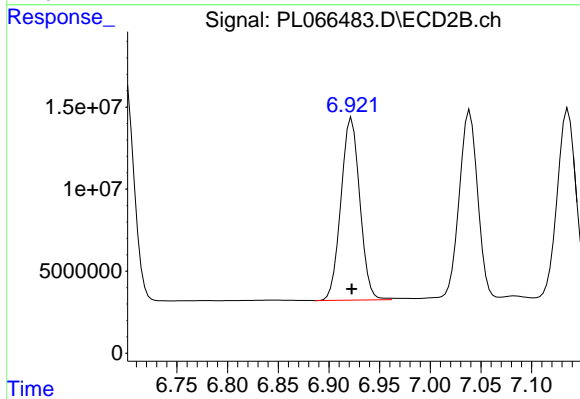
#13 Dieldrin

R.T.: 6.700 min  
 Delta R.T.: 0.000 min  
 Response: 178319440  
 Conc: 45.55 ng/ml



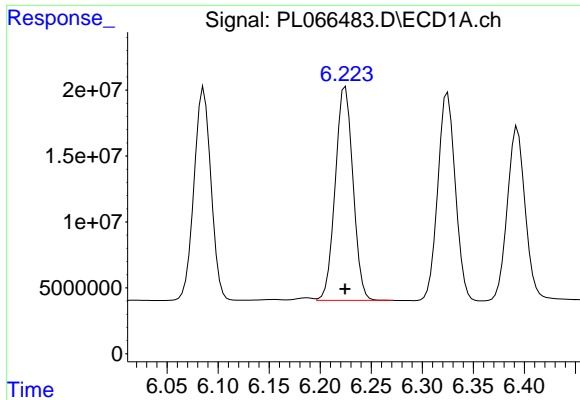
#14 Endrin

R.T.: 5.953 min  
 Delta R.T.: 0.000 min  
 Response: 201660979  
 Conc: 46.29 ng/ml



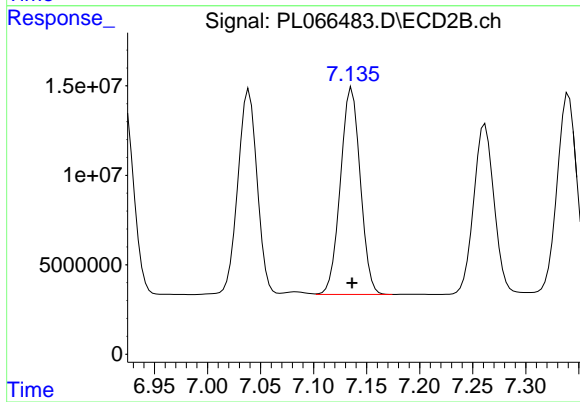
#14 Endrin

R.T.: 6.922 min  
 Delta R.T.: 0.000 min  
 Response: 143868152  
 Conc: 45.91 ng/ml



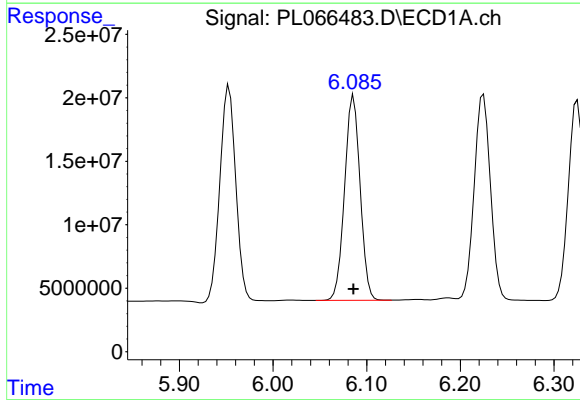
#15 Endosulfan II

R.T.: 6.225 min  
Delta R.T.: 0.000 min  
Response: 196124677  
Conc: 47.53 ng/ml



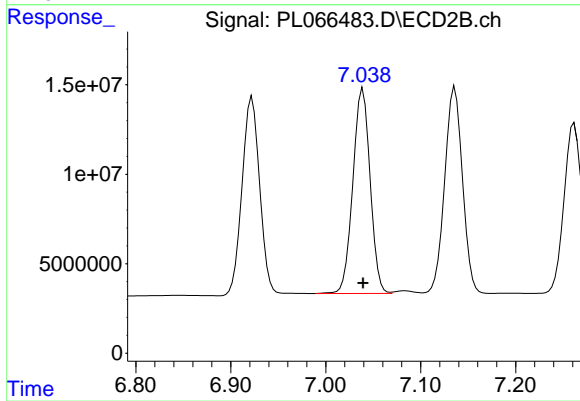
#15 Endosulfan II

R.T.: 7.136 min  
Delta R.T.: 0.000 min  
Response: 150374483  
Conc: 45.53 ng/ml



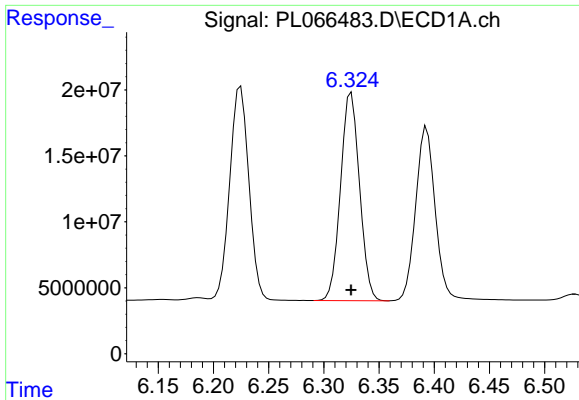
#16 4,4'-DDD

R.T.: 6.086 min  
Delta R.T.: 0.000 min  
Response: 186176737  
Conc: 49.02 ng/ml



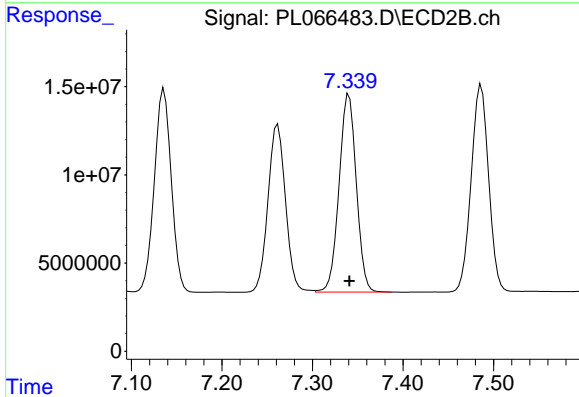
#16 4,4'-DDD

R.T.: 7.039 min  
Delta R.T.: 0.000 min  
Response: 144794958  
Conc: 46.49 ng/ml



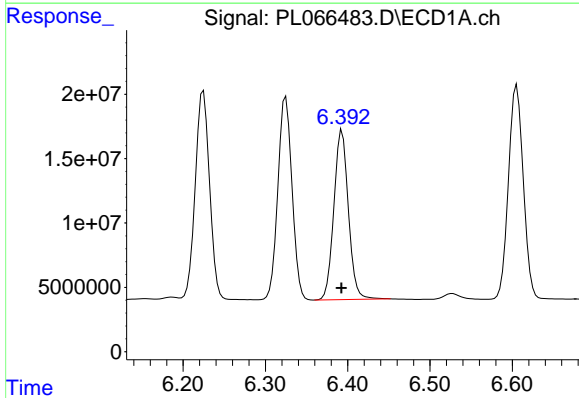
#17 4,4'-DDT

R.T.: 6.325 min  
Delta R.T.: 0.000 min  
Response: 188667090  
Conc: 48.39 ng/ml



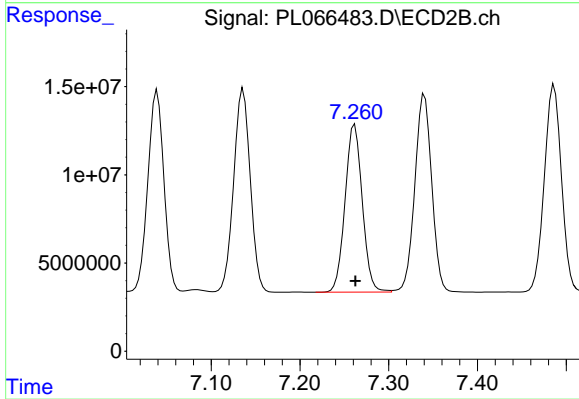
#17 4,4'-DDT

R.T.: 7.340 min  
Delta R.T.: 0.000 min  
Response: 148634974  
Conc: 45.92 ng/ml



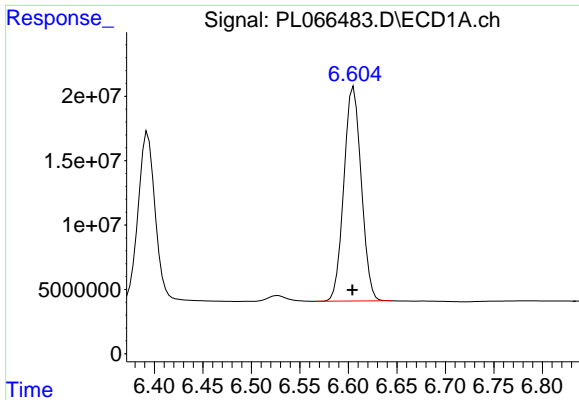
#18 Endrin aldehyde

R.T.: 6.393 min  
Delta R.T.: 0.000 min  
Response: 161095755  
Conc: 47.55 ng/ml



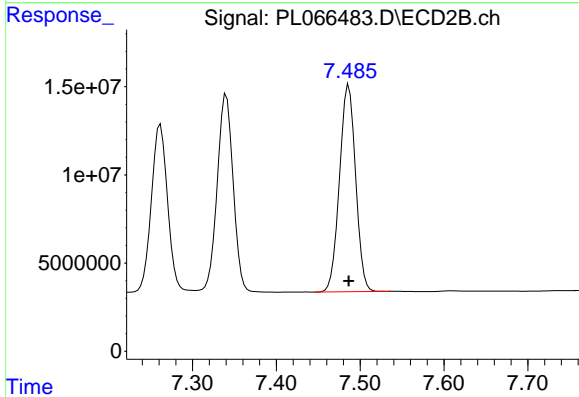
#18 Endrin aldehyde

R.T.: 7.262 min  
Delta R.T.: 0.000 min  
Response: 128080337  
Conc: 45.79 ng/ml



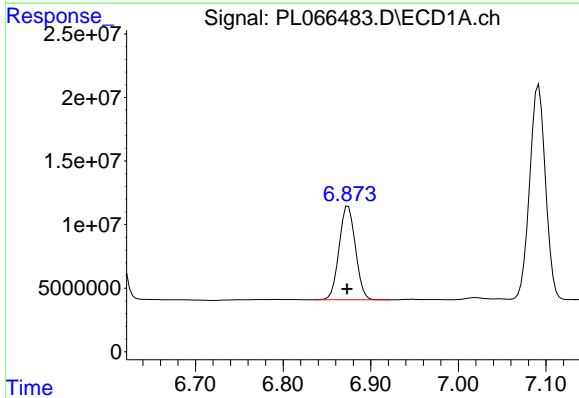
#19 Endosulfan Sulfate

R.T.: 6.605 min  
Delta R.T.: 0.001 min  
Response: 207735787  
Conc: 48.07 ng/ml



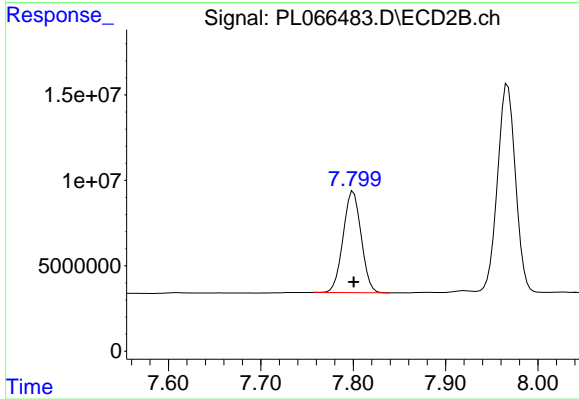
#19 Endosulfan Sulfate

R.T.: 7.486 min  
Delta R.T.: 0.000 min  
Response: 157017806  
Conc: 45.90 ng/ml



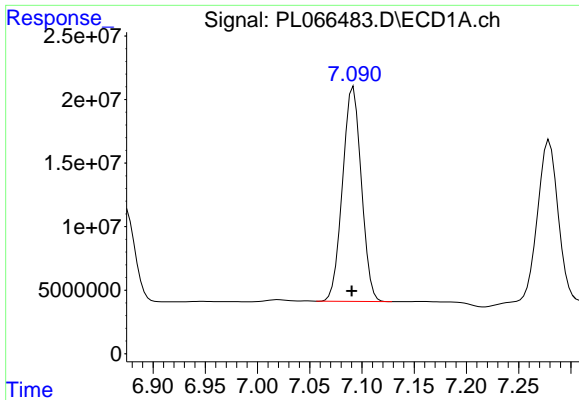
#20 Methoxychlor

R.T.: 6.874 min  
Delta R.T.: 0.001 min  
Response: 95282356  
Conc: 48.51 ng/ml

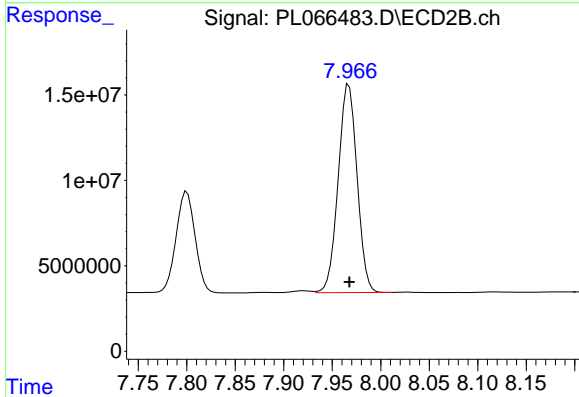


#20 Methoxychlor

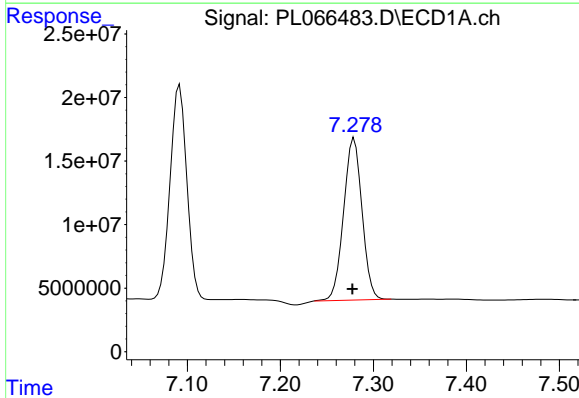
R.T.: 7.800 min  
Delta R.T.: 0.000 min  
Response: 80606099  
Conc: 44.94 ng/ml



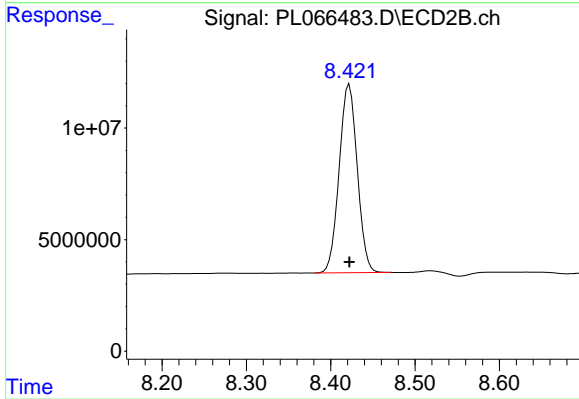
#21 Endrin ketone  
R.T.: 7.092 min  
Delta R.T.: 0.002 min  
Response: 211191304  
Conc: 48.20 ng/ml



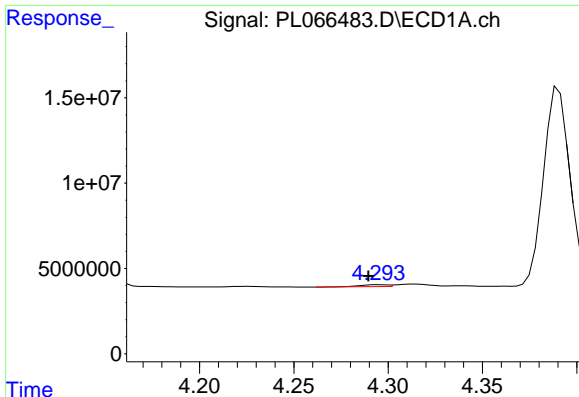
#21 Endrin ketone  
R.T.: 7.967 min  
Delta R.T.: 0.000 min  
Response: 165142914  
Conc: 46.53 ng/ml



#22 Mirex  
R.T.: 7.279 min  
Delta R.T.: 0.002 min  
Response: 175377686  
Conc: 47.74 ng/ml

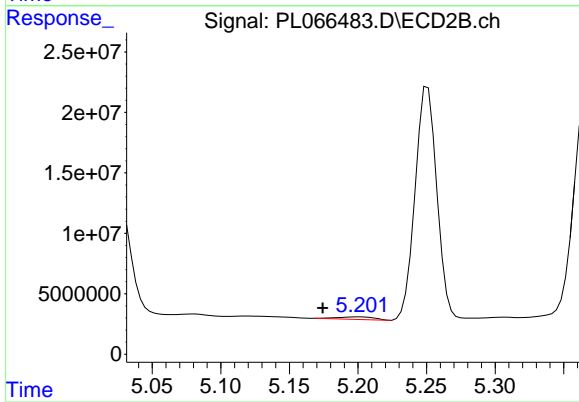


#22 Mirex  
R.T.: 8.422 min  
Delta R.T.: 0.000 min  
Response: 125959779  
Conc: 45.15 ng/ml



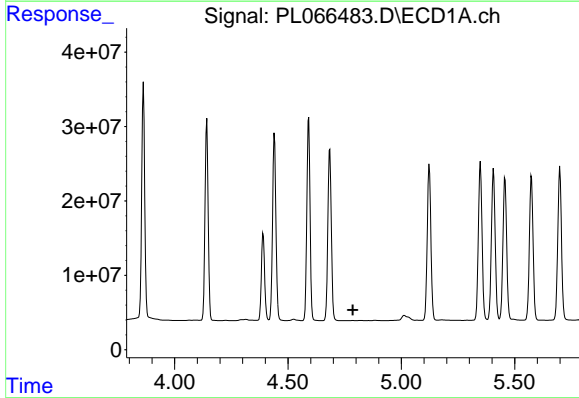
#23 Chlordane-1

R.T.: 4.295 min  
 Delta R.T.: 0.006 min  
 Response: 1083841  
 Conc: 7.65 ng/ml



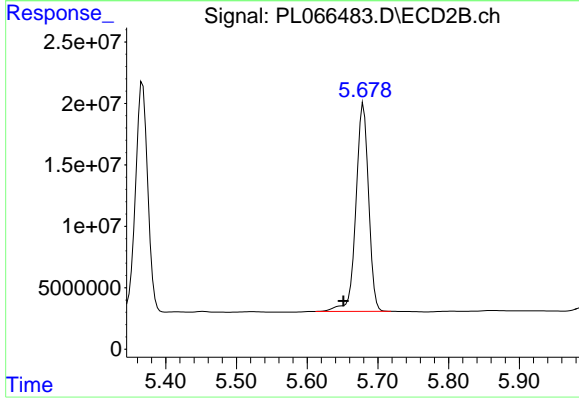
#23 Chlordane-1

R.T.: 5.200 min  
 Delta R.T.: 0.026 min  
 Response: 3920505  
 Conc: 26.72 ng/ml



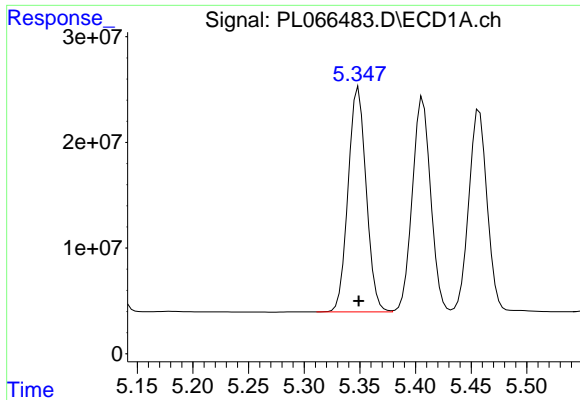
#24 Chlordane-2

R.T.: 0.000 min  
 Exp R.T. : 4.786 min  
 Response: 0  
 Conc: N.D.

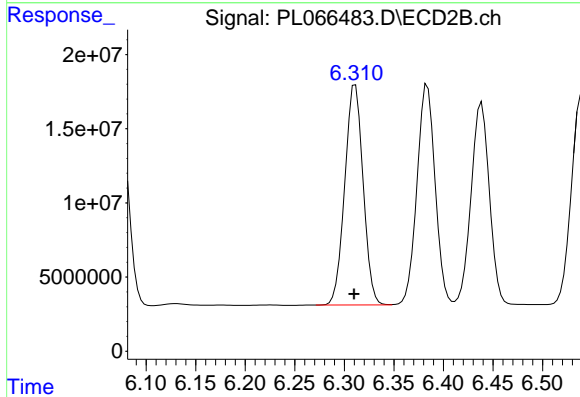


#24 Chlordane-2

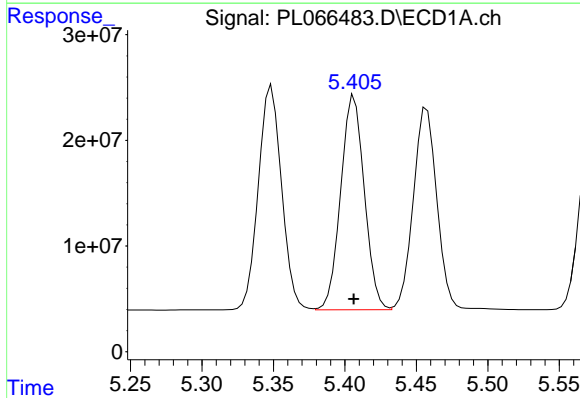
R.T.: 5.680 min  
 Delta R.T.: 0.028 min  
 Response: 210987312  
 Conc: 1256.39 ng/ml



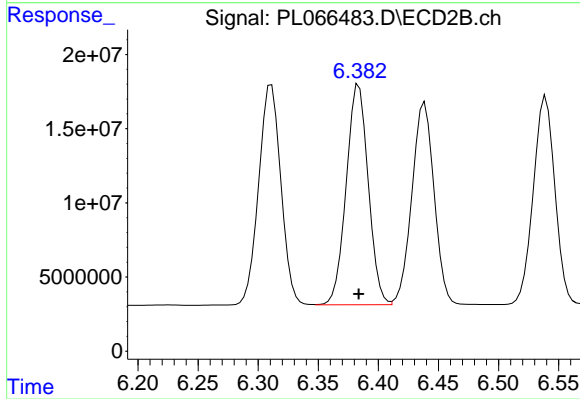
#25 Chlordane-3  
R.T.: 5.349 min  
Delta R.T.: 0.000 min  
Response: 240247463  
Conc: 509.60 ng/ml



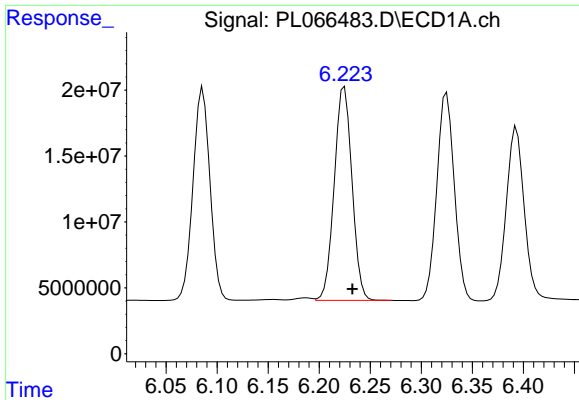
#25 Chlordane-3  
R.T.: 6.311 min  
Delta R.T.: 0.001 min  
Response: 190935445  
Conc: 352.74 ng/ml



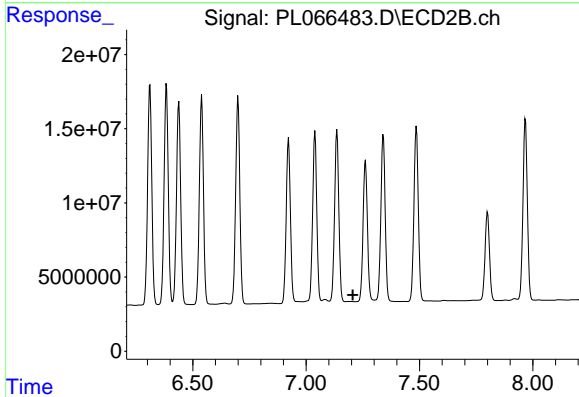
#26 Chlordane-4  
R.T.: 5.407 min  
Delta R.T.: 0.000 min  
Response: 233545524  
Conc: 587.27 ng/ml



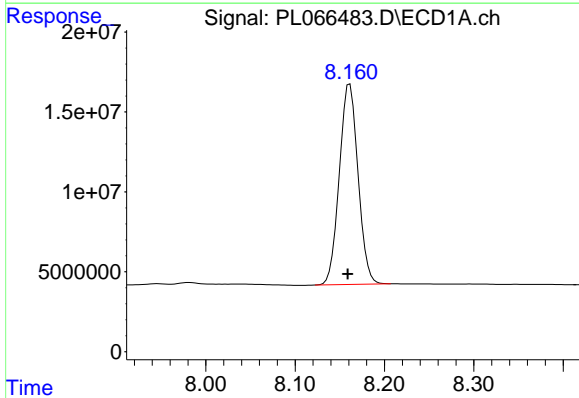
#26 Chlordane-4  
R.T.: 6.384 min  
Delta R.T.: 0.000 min  
Response: 189517932  
Conc: 290.80 ng/ml



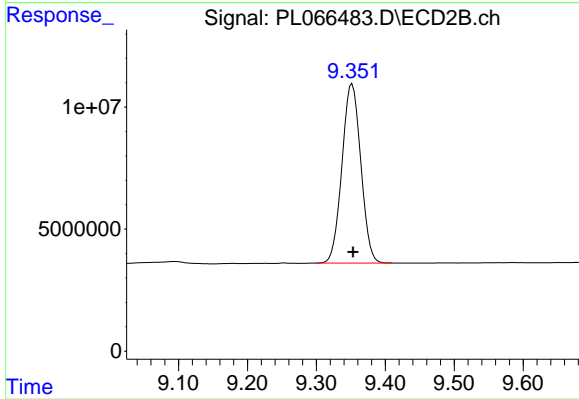
#27 Chlordane-5  
 R.T.: 6.225 min  
 Delta R.T.: -0.008 min  
 Response: 196124677  
 Conc: 1216.47 ng/ml



#27 Chlordane-5  
 R.T.: 0.000 min  
 Exp R.T.: 7.206 min  
 Response: 0  
 Conc: N.D.



#28 Decachlorobiphenyl  
 R.T.: 8.161 min  
 Delta R.T.: 0.002 min  
 Response: 182731667  
 Conc: 47.66 ng/ml



#28 Decachlorobiphenyl  
 R.T.: 9.352 min  
 Delta R.T.: -0.001 min  
 Response: 139273826  
 Conc: 45.02 ng/ml