

Data Path : Z:\pestpcbsrv\HPCHEM1\ECD_D\Data\PD042421\
 Data File : PD062340.D
 Signal(s) : Signal #1: ECD1A.ch Signal #2: ECD2B.ch
 Acq On : 24 Apr 2021 10:50
 Operator : AR\AJ
 Sample : M2107-19
 Misc :
 ALS Vial : 10 Sample Multiplier: 1

Instrument :
 ECD_D
 ClientSampleId :
 SB-34-9.5-10.0

Integration File signal 1: autoint1.e
 Integration File signal 2: autoint2.e
 Quant Time: Apr 26 06:49:37 2021
 Quant Method : Z:\pestpcbsrv\HPCHEM1\ECD_D\Method\PD042321.M
 Quant Title : GC Extractables
 QLast Update : Fri Apr 23 23:19:57 2021
 Response via : Initial Calibration
 Integrator: ChemStation

Volume Inj. : 2 µl
 Signal #1 Phase : ZB-MR2 Signal #2 Phase: ZB-MR1
 Signal #1 Info : 30M x 0.32mm x0.2 Signal #2 Info : 30M x 0.32mm x 0.50µm

Compound	RT#1	RT#2	Resp#1	Resp#2	ng/ml	ng/ml

System Monitoring Compounds						
1) SA Tetrachlo...	3.484	3.981	8647513	106.2E6	10.617	10.088
28) SA Decachlor...	8.256	9.040	17416066	116.5E6	14.357	13.727

Target Compounds

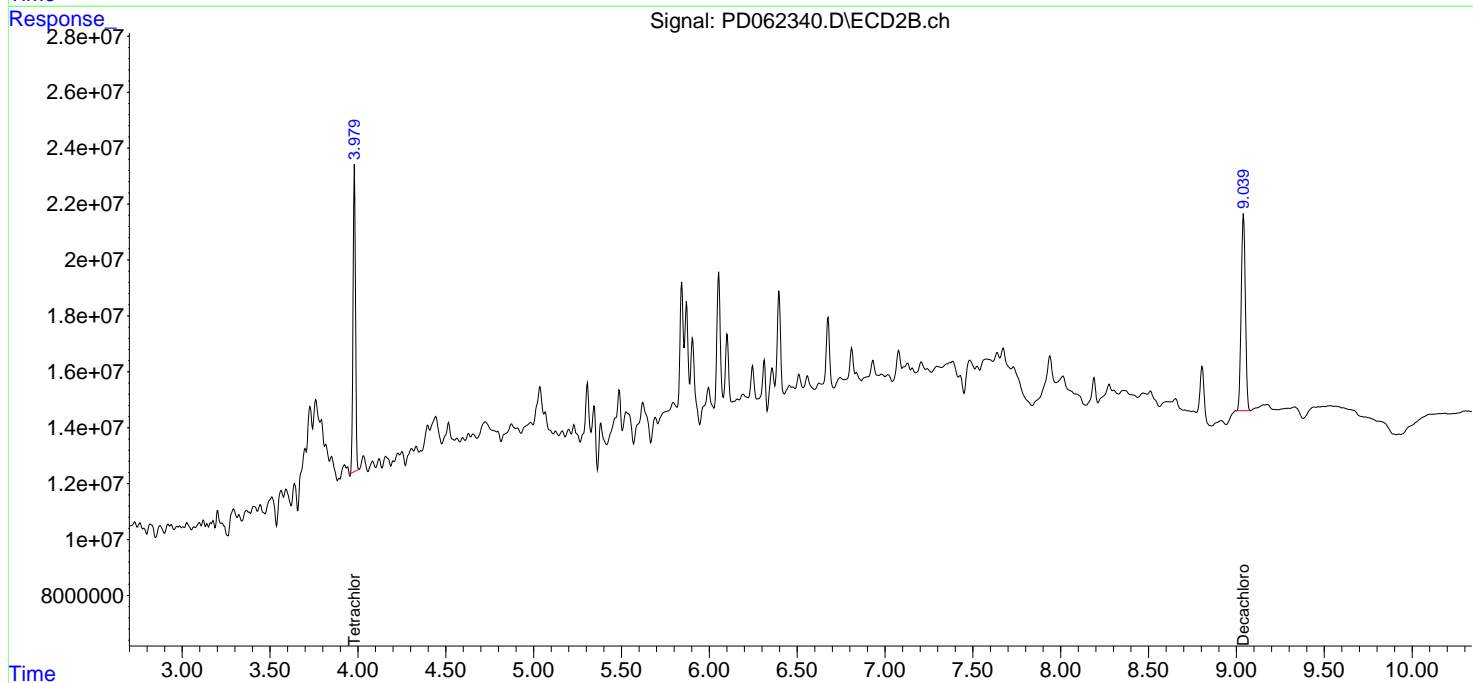
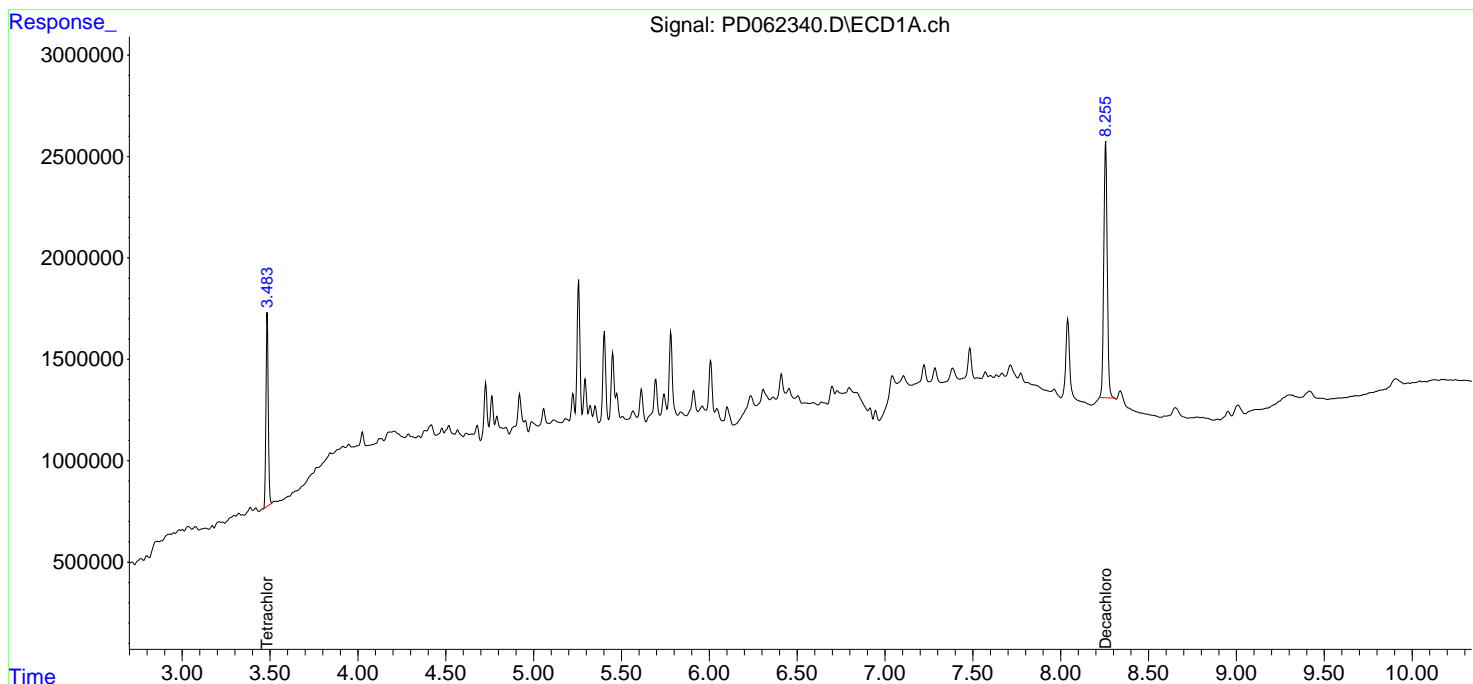
(f)=RT Delta > 1/2 Window (#)=Amounts differ by > 25% (m)=manual int.

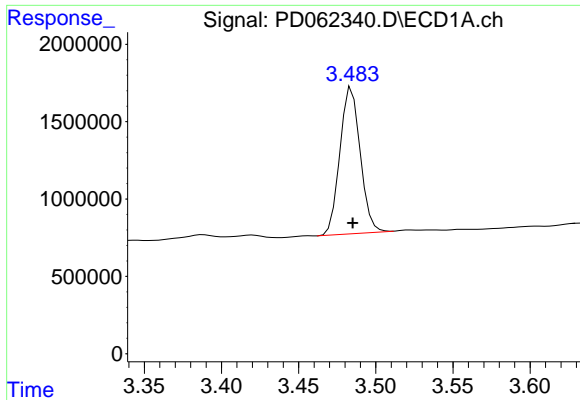
Data Path : Z:\pestpcbsrv\HPCHEM1\ECD_D\Data\PD042421\
 Data File : PD062340.D
 Signal(s) : Signal #1: ECD1A.ch Signal #2: ECD2B.ch
 Acq On : 24 Apr 2021 10:50
 Operator : AR\AJ
 Sample : M2107-19
 Misc :
 ALS Vial : 10 Sample Multiplier: 1

Instrument :
 ECD_D
 ClientSampleID :
 SB-34-9.5-10.0

Integration File signal 1: autoint1.e
 Integration File signal 2: autoint2.e
 Quant Time: Apr 26 06:49:37 2021
 Quant Method : Z:\pestpcbsrv\HPCHEM1\ECD_D\Method\PD042321.M
 Quant Title : GC Extractables
 QLast Update : Fri Apr 23 23:19:57 2021
 Response via : Initial Calibration
 Integrator: ChemStation

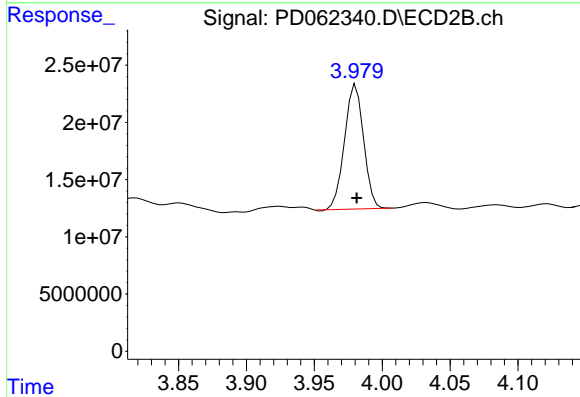
Volume Inj. : 2 µl
 Signal #1 Phase : ZB-MR2 Signal #2 Phase: ZB-MR1
 Signal #1 Info : 30M x 0.32mm x0.2 Signal #2 Info : 30M x 0.32mm x 0.50µm



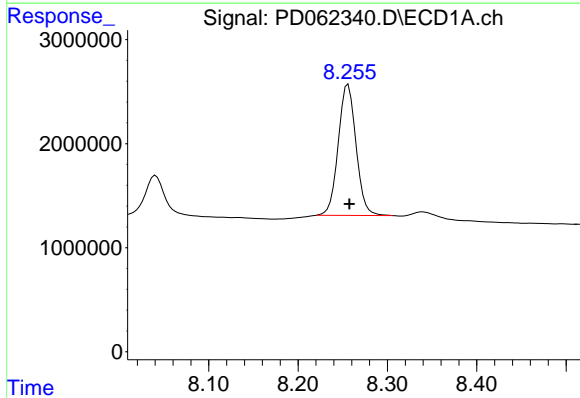


#1 Tetrachloro-m-xylene
R.T.: 3.484 min
Delta R.T.: 0.000 min
Response: 8647513
Conc: 10.62 ng/ml

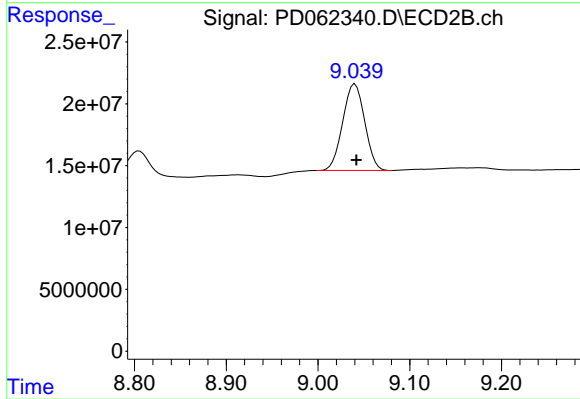
Instrument :
ECD_D
ClientSampleId :
SB-34-9.5-10.0



#1 Tetrachloro-m-xylene
R.T.: 3.981 min
Delta R.T.: 0.000 min
Response: 106238129
Conc: 10.09 ng/ml



#28 Decachlorobiphenyl
R.T.: 8.256 min
Delta R.T.: -0.001 min
Response: 17416066
Conc: 14.36 ng/ml



#28 Decachlorobiphenyl
R.T.: 9.040 min
Delta R.T.: -0.001 min
Response: 116470552
Conc: 13.73 ng/ml