

Data Path : Z:\pestpcbsrv\HPCHEM1\ECD_D\Data\PD042421\
 Data File : PD062365.D
 Signal(s) : Signal #1: ECD1A.ch Signal #2: ECD2B.ch
 Acq On : 24 Apr 2021 16:53
 Operator : AR\AJ
 Sample : M2148-01
 Misc :
 ALS Vial : 32 Sample Multiplier: 1

Instrument :
 ECD_D
 ClientSampleId :
 TP-18-17-COMP

Integration File signal 1: autoint1.e
 Integration File signal 2: autoint2.e
 Quant Time: Apr 26 06:55:29 2021
 Quant Method : Z:\pestpcbsrv\HPCHEM1\ECD_D\Method\PD042321.M
 Quant Title : GC Extractables
 QLast Update : Fri Apr 23 23:19:57 2021
 Response via : Initial Calibration
 Integrator: ChemStation

Volume Inj. : 2 µl
 Signal #1 Phase : ZB-MR2 Signal #2 Phase: ZB-MR1
 Signal #1 Info : 30M x 0.32mm x0.2 Signal #2 Info : 30M x 0.32mm x 0.50µm

Compound	RT#1	RT#2	Resp#1	Resp#2	ng/ml	ng/ml

System Monitoring Compounds						
1) SA Tetrachlo...	3.485	3.982	9600893	122.0E6	11.788	11.587
28) SA Decachlor...	8.256	9.042	12765507	88368023	10.524	10.415

Target Compounds

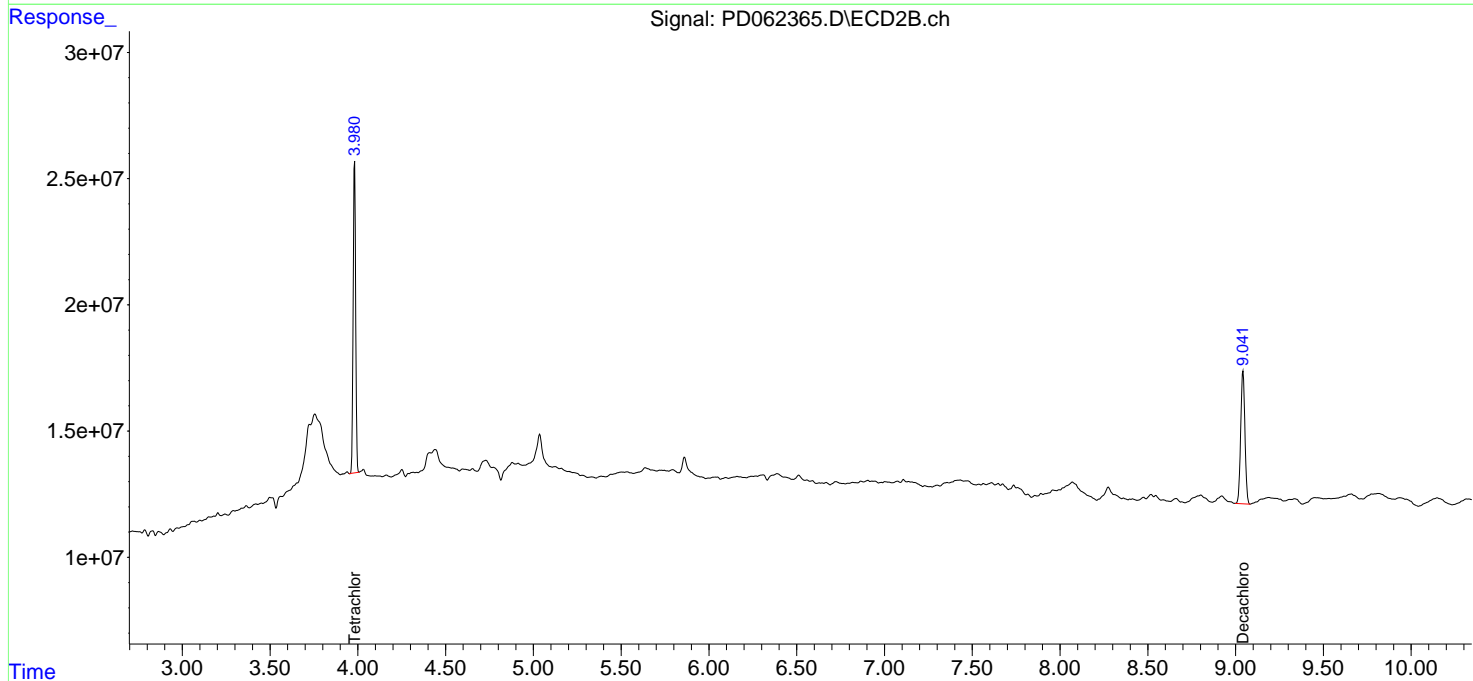
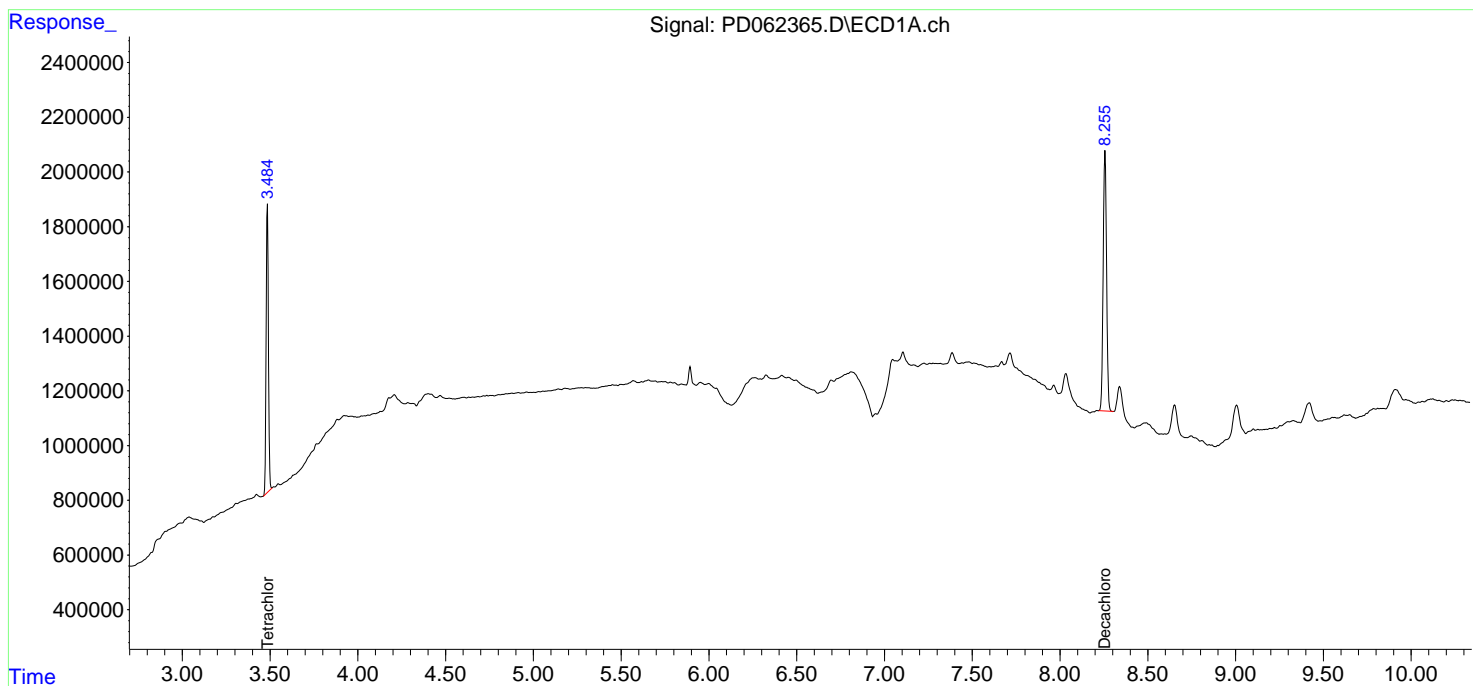
(f)=RT Delta > 1/2 Window (#)=Amounts differ by > 25% (m)=manual int.

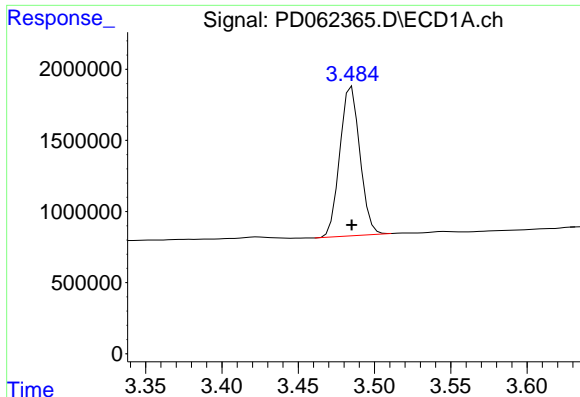
Data Path : Z:\pestpcbsrv\HPCHEM1\ECD_D\Data\PD042421\
 Data File : PD062365.D
 Signal(s) : Signal #1: ECD1A.ch Signal #2: ECD2B.ch
 Acq On : 24 Apr 2021 16:53
 Operator : AR\AJ
 Sample : M2148-01
 Misc :
 ALS Vial : 32 Sample Multiplier: 1

Instrument :
 ECD_D
 ClientSampled :
 TP-18-17-COMP

Integration File signal 1: autoint1.e
 Integration File signal 2: autoint2.e
 Quant Time: Apr 26 06:55:29 2021
 Quant Method : Z:\pestpcbsrv\HPCHEM1\ECD_D\Method\PD042321.M
 Quant Title : GC Extractables
 QLast Update : Fri Apr 23 23:19:57 2021
 Response via : Initial Calibration
 Integrator: ChemStation

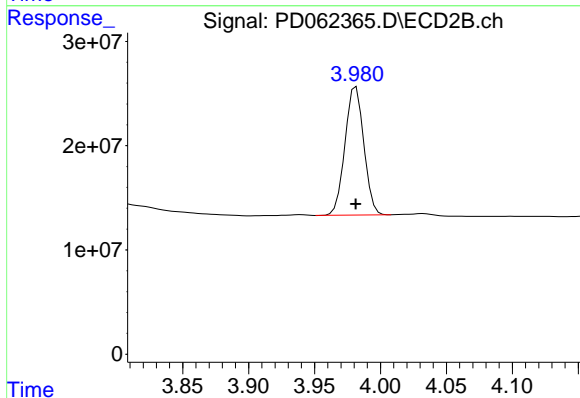
Volume Inj. : 2 µl
 Signal #1 Phase : ZB-MR2 Signal #2 Phase: ZB-MR1
 Signal #1 Info : 30M x 0.32mm x 0.2 Signal #2 Info : 30M x 0.32mm x 0.50µm



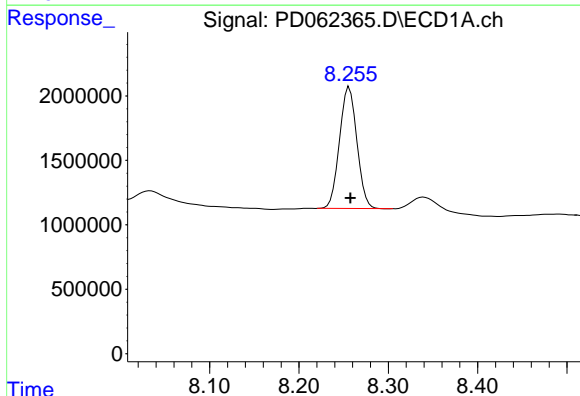


#1 Tetrachloro-m-xylene
 R.T.: 3.485 min
 Delta R.T.: 0.000 min
 Response: 9600893
 Conc: 11.79 ng/ml

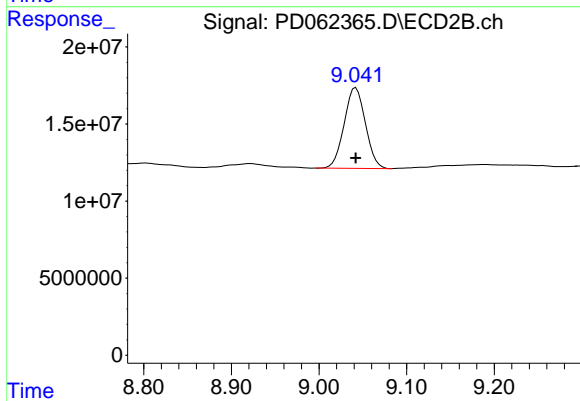
Instrument :
 ECD_D
 ClientSampleId :
 TP-18-17-COMP



#1 Tetrachloro-m-xylene
 R.T.: 3.982 min
 Delta R.T.: 0.000 min
 Response: 122028666
 Conc: 11.59 ng/ml



#28 Decachlorobiphenyl
 R.T.: 8.256 min
 Delta R.T.: -0.001 min
 Response: 12765507
 Conc: 10.52 ng/ml



#28 Decachlorobiphenyl
 R.T.: 9.042 min
 Delta R.T.: 0.000 min
 Response: 88368023
 Conc: 10.41 ng/ml