

Data Path : Z:\pestpcbsrv\HPCHEM1\ECD_D\Data\PD042421\
 Data File : PD062384.D
 Signal(s) : Signal #1: ECD1A.ch Signal #2: ECD2B.ch
 Acq On : 24 Apr 2021 21:33
 Operator : AR\AJ
 Sample : PB135947BL
 Misc :
 ALS Vial : 48 Sample Multiplier: 1

Instrument :
 ECD_D
 ClientSampleId :
 PB135947BL

Integration File signal 1: autoint1.e
 Integration File signal 2: autoint2.e
 Quant Time: Apr 26 06:59:44 2021
 Quant Method : Z:\pestpcbsrv\HPCHEM1\ECD_D\Method\PD042321.M
 Quant Title : GC Extractables
 QLast Update : Fri Apr 23 23:19:57 2021
 Response via : Initial Calibration
 Integrator: ChemStation

Volume Inj. : 2 µl
 Signal #1 Phase : ZB-MR2 Signal #2 Phase: ZB-MR1
 Signal #1 Info : 30M x 0.32mm x0.2 Signal #2 Info : 30M x 0.32mm x 0.50µm

Compound	RT#1	RT#2	Resp#1	Resp#2	ng/ml	ng/ml

System Monitoring Compounds						
1) SA Tetrachlo...	3.484	3.981	17102780	226.0E6	20.998	21.456
28) SA Decachlor...	8.257	9.041	24651439	181.5E6	20.322	21.392

Target Compounds

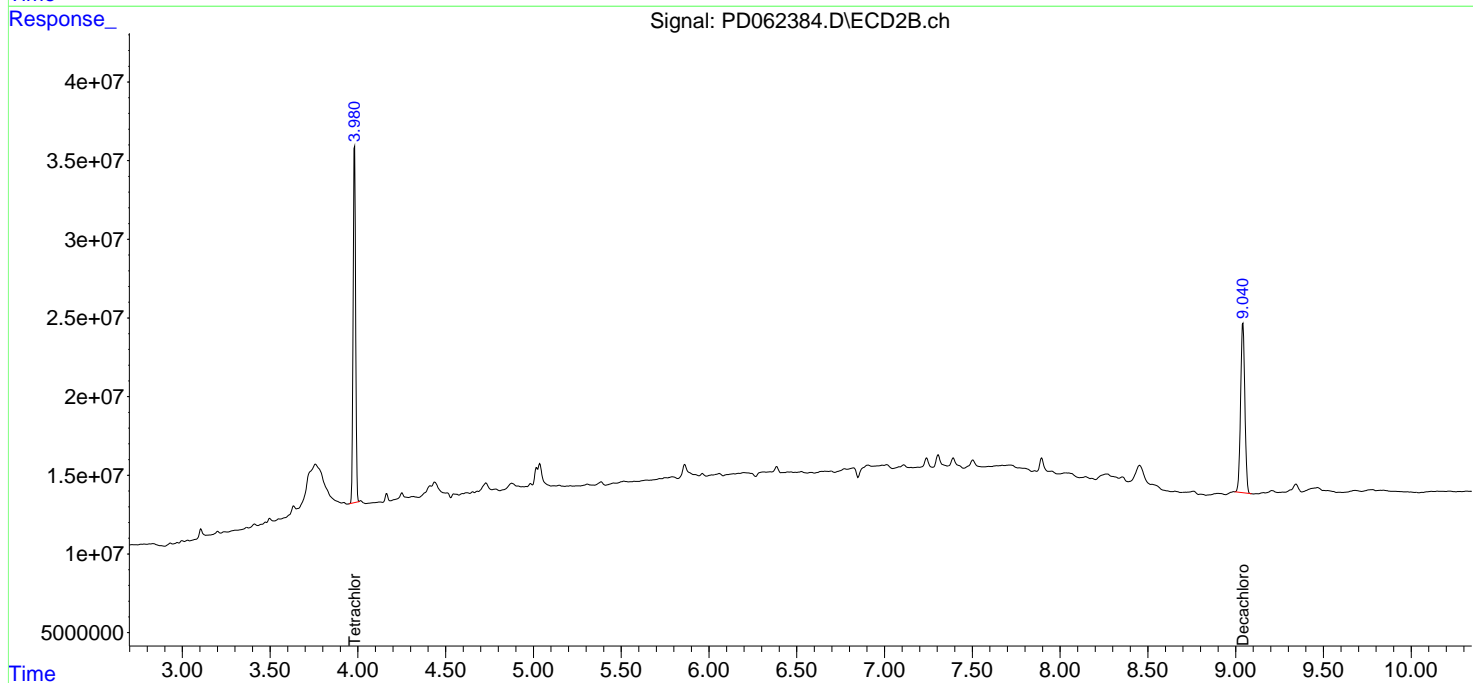
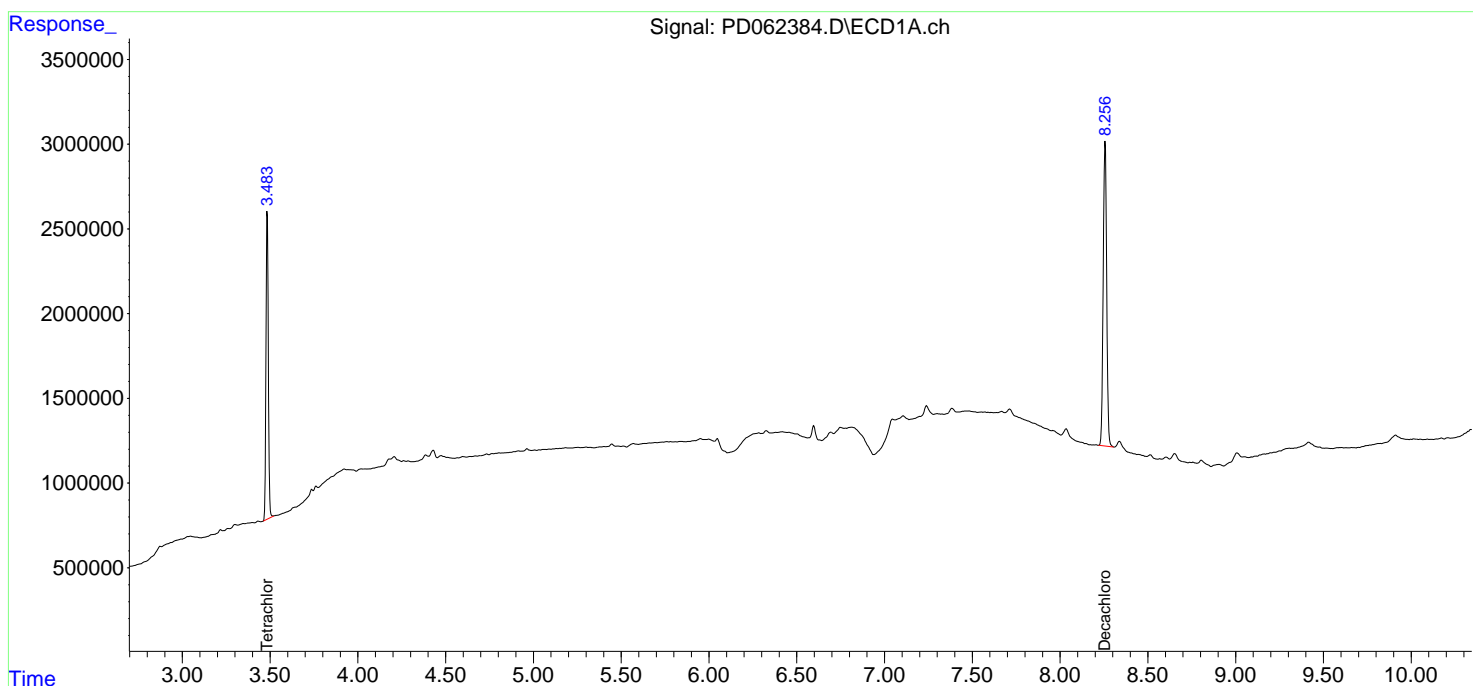
(f)=RT Delta > 1/2 Window (#)=Amounts differ by > 25% (m)=manual int.

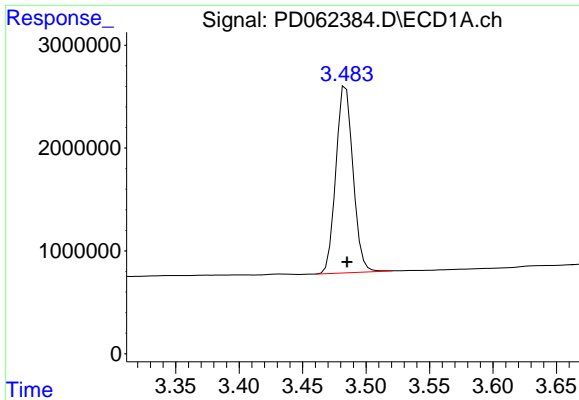
Data Path : Z:\pestpcbsrv\HPCHEM1\ECD_D\Data\PD042421\
 Data File : PD062384.D
 Signal(s) : Signal #1: ECD1A.ch Signal #2: ECD2B.ch
 Acq On : 24 Apr 2021 21:33
 Operator : AR\AJ
 Sample : PB135947BL
 Misc :
 ALS Vial : 48 Sample Multiplier: 1

Instrument :
 ECD_D
 ClientSampled :
 PB135947BL

Integration File signal 1: autoint1.e
 Integration File signal 2: autoint2.e
 Quant Time: Apr 26 06:59:44 2021
 Quant Method : Z:\pestpcbsrv\HPCHEM1\ECD_D\Method\PD042321.M
 Quant Title : GC Extractables
 QLast Update : Fri Apr 23 23:19:57 2021
 Response via : Initial Calibration
 Integrator: ChemStation

Volume Inj. : 2 µl
 Signal #1 Phase : ZB-MR2 Signal #2 Phase: ZB-MR1
 Signal #1 Info : 30M x 0.32mm x0.2 Signal #2 Info : 30M x 0.32mm x 0.50µm

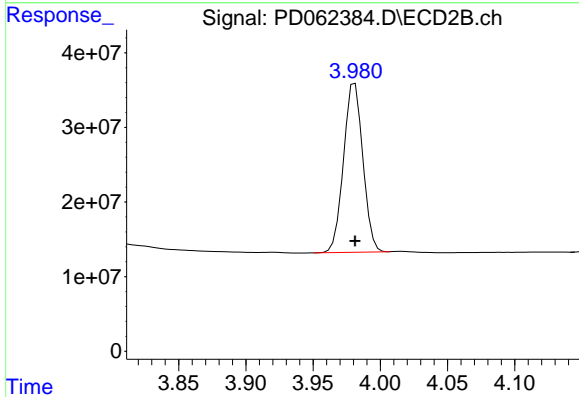




#1 Tetrachloro-m-xylene

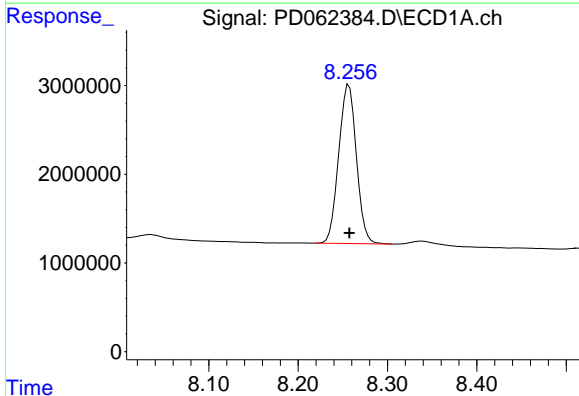
R.T.: 3.484 min
Delta R.T.: 0.000 min
Response: 17102780
Conc: 21.00 ng/ml

Instrument :
ECD_D
ClientSampleId :
PB135947BL



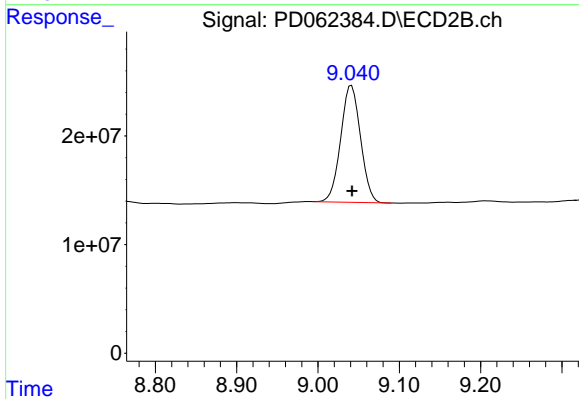
#1 Tetrachloro-m-xylene

R.T.: 3.981 min
Delta R.T.: 0.000 min
Response: 225960318
Conc: 21.46 ng/ml



#28 Decachlorobiphenyl

R.T.: 8.257 min
Delta R.T.: 0.000 min
Response: 24651439
Conc: 20.32 ng/ml



#28 Decachlorobiphenyl

R.T.: 9.041 min
Delta R.T.: 0.000 min
Response: 181508892
Conc: 21.39 ng/ml