

Data Path : Z:\pestpcbsrv\HPCHEM1\ECD_D\Data\PD042424\
 Data File : PD082575.D
 Signal(s) : Signal #1: ECD1A.ch Signal #2: ECD2B.ch
 Acq On : 24 Apr 2024 13:26
 Operator : AR\AJ
 Sample : TOXAPH401
 Misc :
 ALS Vial : 7 Sample Multiplier: 1

Instrument :
 ECD_D
 ClientSampleId :
 TOXAPH4013

Integration File signal 1: autoint1.e
 Integration File signal 2: autoint2.e
 Quant Time: Apr 24 15:26:25 2024
 Quant Method : Z:\pestpcbsrv\HPCHEM1\ECD_D\Method\PD042424CLP.M
 Quant Title : GC Extractables
 QLast Update : Wed Apr 24 15:20:43 2024
 Response via : Initial Calibration
 Integrator: ChemStation

Volume Inj. : 1 µl
 Signal #1 Phase : ZB-MR1 Signal #2 Phase: ZB-MR2
 Signal #1 Info : 30M x 0.32mm x0.5 Signal #2 Info : 30M x 0.32mm x 0.25µm

	Compound	RT#1	RT#2	Resp#1	Resp#2	ng/ml	ng/ml

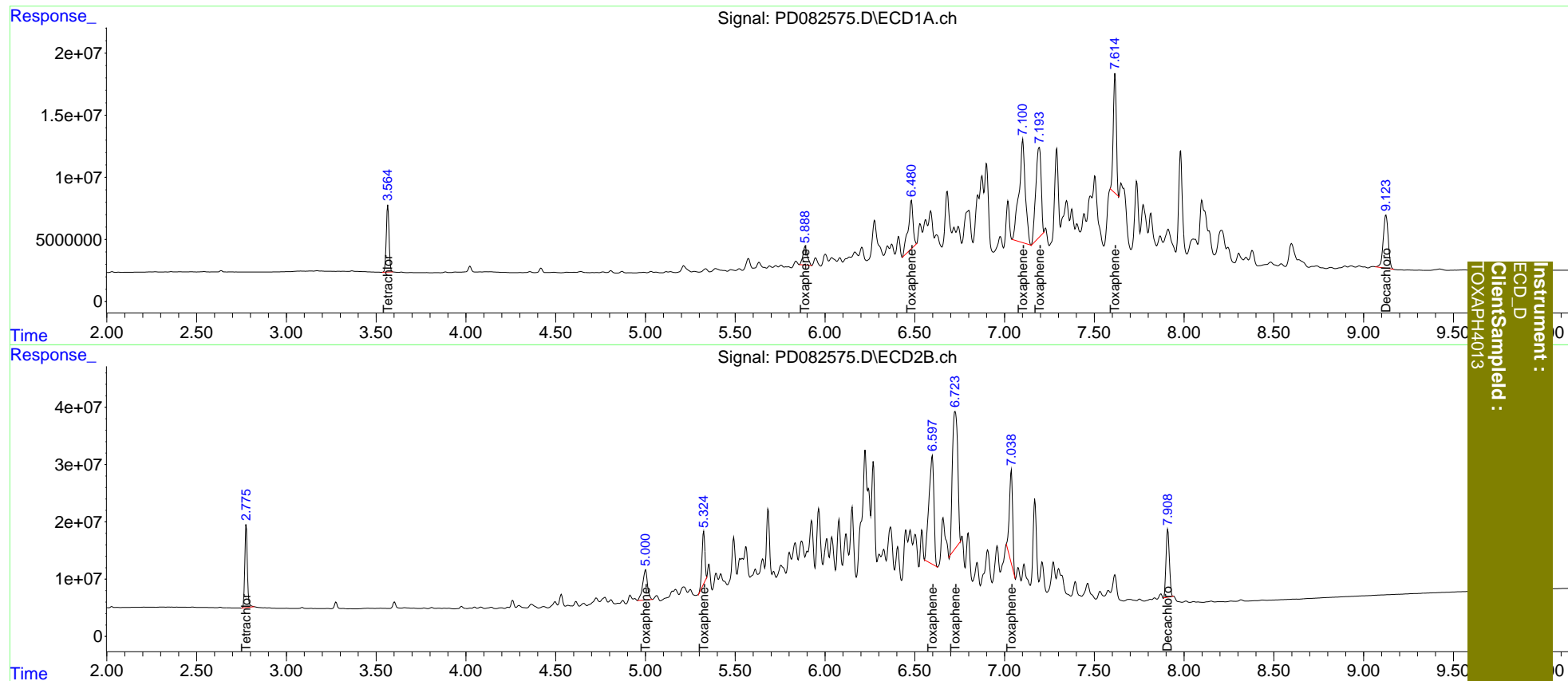
System Monitoring Compounds							
1)	SA Tetrachlo...	3.565	2.777	57422810	142.7E6	38.925	39.542
27)	SA Decachlor...	9.124	7.910	82771614	153.6E6	78.458	79.189
Target Compounds							
22)	Toxaphene-1	5.890	5.001	25701856	97424802	3989.645	3946.951
23)	Toxaphene-2	6.481	5.325	74202588	100.4E6	3962.996	3957.290
24)	Toxaphene-3	7.102	6.598	202.7E6	370.3E6	3898.680	3895.263
25)	Toxaphene-4	7.193	6.725	151.2E6	490.9E6	3870.757	3940.572
26)	Toxaphene-5	7.616	7.038	114.1E6	198.0E6	3888.917	4054.641

(f)=RT Delta > 1/2 Window (#)=Amounts differ by > 25% (m)=manual int.

Data Path : Z:\pestpcbsrv\HPCHEM1\ECD_D\Data\PD042424\
 Data File : PD082575.D
 Signal(s) : Signal #1: ECD1A.ch Signal #2: ECD2B.ch
 Acq On : 24 Apr 2024 13:26
 Operator : AR\AJ
 Sample : TOXAPH401
 Misc :
 ALS Vial : 7 Sample Multiplier: 1

Integration File signal 1: autoint1.e
 Integration File signal 2: autoint2.e
 Quant Time: Apr 24 15:26:25 2024
 Quant Method : Z:\pestpcbsrv\HPCHEM1\ECD_D\Method\PD042424CLP.M
 Quant Title : GC Extractables
 QLast Update : Wed Apr 24 15:20:43 2024
 Response via : Initial Calibration
 Integrator: ChemStation

Volume Inj. : 1 µl
 Signal #1 Phase : ZB-MR1 Signal #2 Phase: ZB-MR2
 Signal #1 Info : 30M x 0.32mm x0.5 Signal #2 Info : 30M x 0.32mm x 0.25µm



Instrument :
 ECD_D
 ClientSampled :
 TOXAPH4013