

Data Path : Z:\pestpcbsrv\HPCHEM1\ECD\_D\Data\PD042424\  
 Data File : PD082586.D  
 Signal(s) : Signal #1: ECD1A.ch Signal #2: ECD2B.ch  
 Acq On : 24 Apr 2024 15:52  
 Operator : AR\AJ  
 Sample : INDB501  
 Misc :  
 ALS Vial : 18 Sample Multiplier: 1

Instrument :  
 ECD\_D  
 ClientSampleId :  
 INDB5024

Integration File signal 1: autoint1.e  
 Integration File signal 2: autoint2.e  
 Quant Time: Apr 24 16:07:04 2024  
 Quant Method : Z:\pestpcbsrv\HPCHEM1\ECD\_D\Method\PD042424CLP.M  
 Quant Title : GC Extractables  
 QLast Update : Wed Apr 24 16:06:52 2024  
 Response via : Initial Calibration  
 Integrator: ChemStation

Volume Inj. : 1 µl  
 Signal #1 Phase : ZB-MR1 Signal #2 Phase: ZB-MR2  
 Signal #1 Info : 30M x 0.32mm x0.5 Signal #2 Info : 30M x 0.32mm x 0.25µm

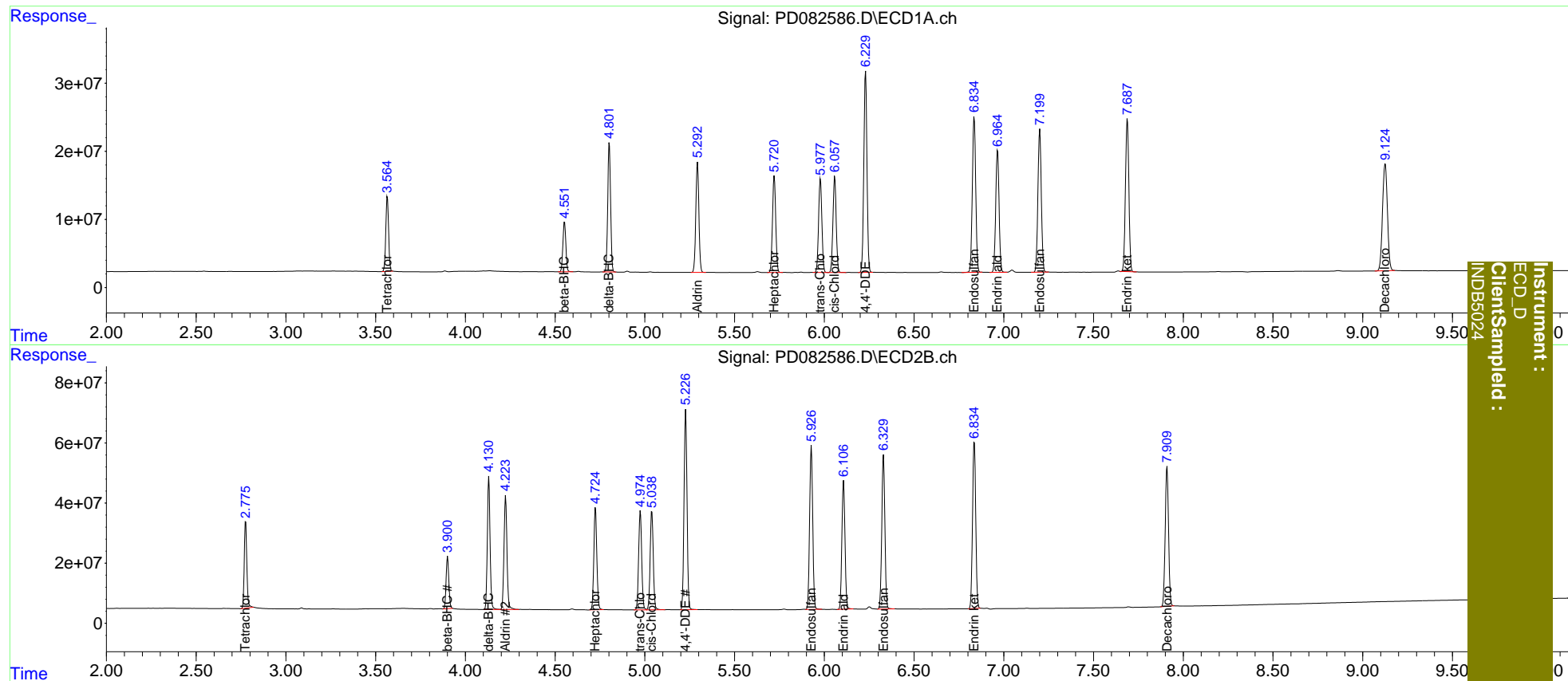
Compound	RT#1	RT#2	Resp#1	Resp#2	ng/ml	ng/ml
-----						
System Monitoring Compounds						
1) SA Tetrachlo...	3.565	2.776	119.0E6	289.0E6	80.427	79.721
27) SA Decachlor...	9.126	7.910	298.3E6	603.8E6	150.819	157.113
Target Compounds						
5) MB Aldrin	5.294	4.224	193.3E6	434.9E6	85.274	83.853
6) B beta-BHC	4.553	3.901	83480209	180.9E6	79.559	79.528
7) B delta-BHC	4.802	4.131	210.8E6	466.4E6	89.488	85.147
8) B Heptachlo...	5.721	4.725	176.8E6	391.3E6	82.616	80.653
10) B trans-Chl...	5.978	4.975	174.9E6	391.2E6	83.829	82.858
11) B cis-Chlor...	6.058	5.039	176.8E6	396.0E6	82.790	81.942
12) B 4,4'-DDE	6.230	5.228	361.0E6	765.8E6	171.282	167.227
15) B Endosulfa...	6.835	5.928	298.4E6	651.0E6	159.755	160.300
18) B Endrin al...	6.966	6.108	234.5E6	511.6E6	160.884	155.515
19) B Endosulfa...	7.201	6.330	277.0E6	617.7E6	163.508	160.771
21) B Endrin ke...	7.689	6.836	296.6E6	686.3E6	163.869	160.100
-----						

(f)=RT Delta > 1/2 Window (#)=Amounts differ by > 25% (m)=manual int.

Data Path : Z:\pestpcbsrv\HPCHEM1\ECD\_D\Data\PD042424\  
 Data File : PD082586.D  
 Signal(s) : Signal #1: ECD1A.ch Signal #2: ECD2B.ch  
 Acq On : 24 Apr 2024 15:52  
 Operator : AR\AJ  
 Sample : INDB501  
 Misc :  
 ALS Vial : 18 Sample Multiplier: 1

Integration File signal 1: autoint1.e  
 Integration File signal 2: autoint2.e  
 Quant Time: Apr 24 16:07:04 2024  
 Quant Method : Z:\pestpcbsrv\HPCHEM1\ECD\_D\Method\PD042424CLP.M  
 Quant Title : GC Extractables  
 QLast Update : Wed Apr 24 16:06:52 2024  
 Response via : Initial Calibration  
 Integrator: ChemStation

Volume Inj. : 1 µl  
 Signal #1 Phase : ZB-MR1 Signal #2 Phase: ZB-MR2  
 Signal #1 Info : 30M x 0.32mm x0.5 Signal #2 Info : 30M x 0.32mm x 0.25µm



Instrument :  
 ECD\_D  
 ClientSampled :  
 INDB5024