

Data Path : Z:\pestpcbsrv\HPCHEM1\ECD_D\Data\PD042621\
 Data File : PD062469.D
 Signal(s) : Signal #1: ECD1A.ch Signal #2: ECD2B.ch
 Acq On : 27 Apr 2021 04:45
 Operator : AR\AJ
 Sample : PSTDCCC050
 Misc :
 ALS Vial : 4 Sample Multiplier: 1

Instrument :
 ECD_D
 ClientSampleId :
 PSTDCCC050

Integration File signal 1: autoint1.e
 Integration File signal 2: autoint2.e
 Quant Time: Apr 27 05:48:00 2021
 Quant Method : Z:\pestpcbsrv\HPCHEM1\ECD_D\Method\PD042321.M
 Quant Title : GC Extractables
 QLast Update : Fri Apr 23 23:19:57 2021
 Response via : Initial Calibration
 Integrator: ChemStation

Volume Inj. : 2 µl
 Signal #1 Phase : ZB-MR2 Signal #2 Phase: ZB-MR1
 Signal #1 Info : 30M x 0.32mm x0.2 Signal #2 Info : 30M x 0.32mm x 0.50µm

Compound	RT#1	RT#2	Resp#1	Resp#2	ng/ml	ng/ml

System Monitoring Compounds						
1) SA Tetrachlo...	3.484	3.981	41488602	533.7E6	50.938	50.673
28) SA Decachlor...	8.255	9.040	55011619	440.7E6	45.351	51.944
Target Compounds						
2) A alpha-BHC	3.924	4.370	64629375	847.1E6	50.456	50.126
3) MA gamma-BHC...	4.208	4.654	61214491	769.5E6	49.740	48.994
4) MA Heptachlor	4.512	5.162	63021895	742.7E6	48.083	47.393
5) MB Aldrin	4.761	5.467	62296337	724.8E6	49.774	48.218
6) B beta-BHC	4.458	4.824	28514895	323.8E6	47.363	48.405
7) B delta-BHC	4.665	5.041	63050576	755.8E6	49.785	54.184
8) B Heptachlo...	5.205	5.852	60109208	657.9E6	48.959	47.890
9) A Endosulfan I	5.545	6.209	56992622	607.7E6	48.316	46.406
10) B gamma-Chl...	5.432	6.086	61969936	669.6E6	48.634	47.434
11) B alpha-Chl...	5.491	6.159	61011477	634.2E6	48.631	46.197
12) B 4,4'-DDE	5.654	6.316	58544006	640.0E6	48.229	45.328
13) MA Dieldrin	5.790	6.466	59963967	636.0E6	46.989	45.215
14) MA Endrin	6.048	6.683	49505583	498.0E6	42.716	40.819
15) B Endosulfa...	6.321	6.893	50297187	502.0E6	44.512	43.623
16) A 4,4'-DDD	6.171	6.806	49321310	515.3E6	49.284	46.239
17) MA 4,4'-DDT	6.413	7.104	45472030	479.7E6	44.529	48.107
18) B Endrin al...	6.490	7.016	43010343	426.3E6	43.535	45.162
19) B Endosulfa...	6.704	7.239	52569523	520.8E6	44.523	48.004
20) A Methoxychlor	6.960	7.562	26546306	223.1E6	44.674	45.669
21) B Endrin ke...	7.198	7.710	61847815	510.3E6	50.773	50.861
22) Mirex	7.388	8.164	46827291	323.1E6	46.832	51.688
24) Chlordane-2	0.000	5.467f	0	724.8E6	N.D.	1522.659 #
25) Chlordane-3	5.432	6.086	61969936	669.6E6	496.932	340.815 #
26) Chlordane-4	5.491	6.159	61011477	634.2E6	582.233	278.516 #
27) Chlordane-5	6.321	0.000	50297187	0	1109.862	N.D. #

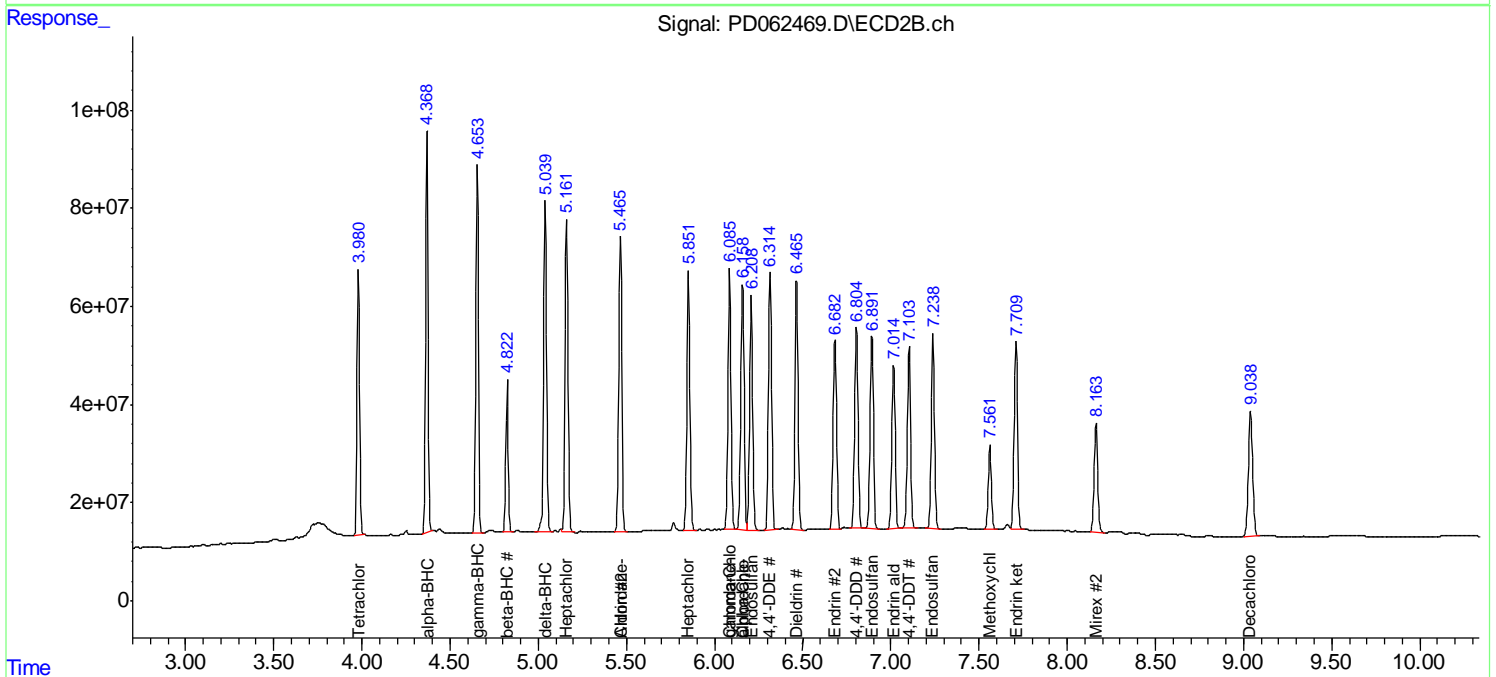
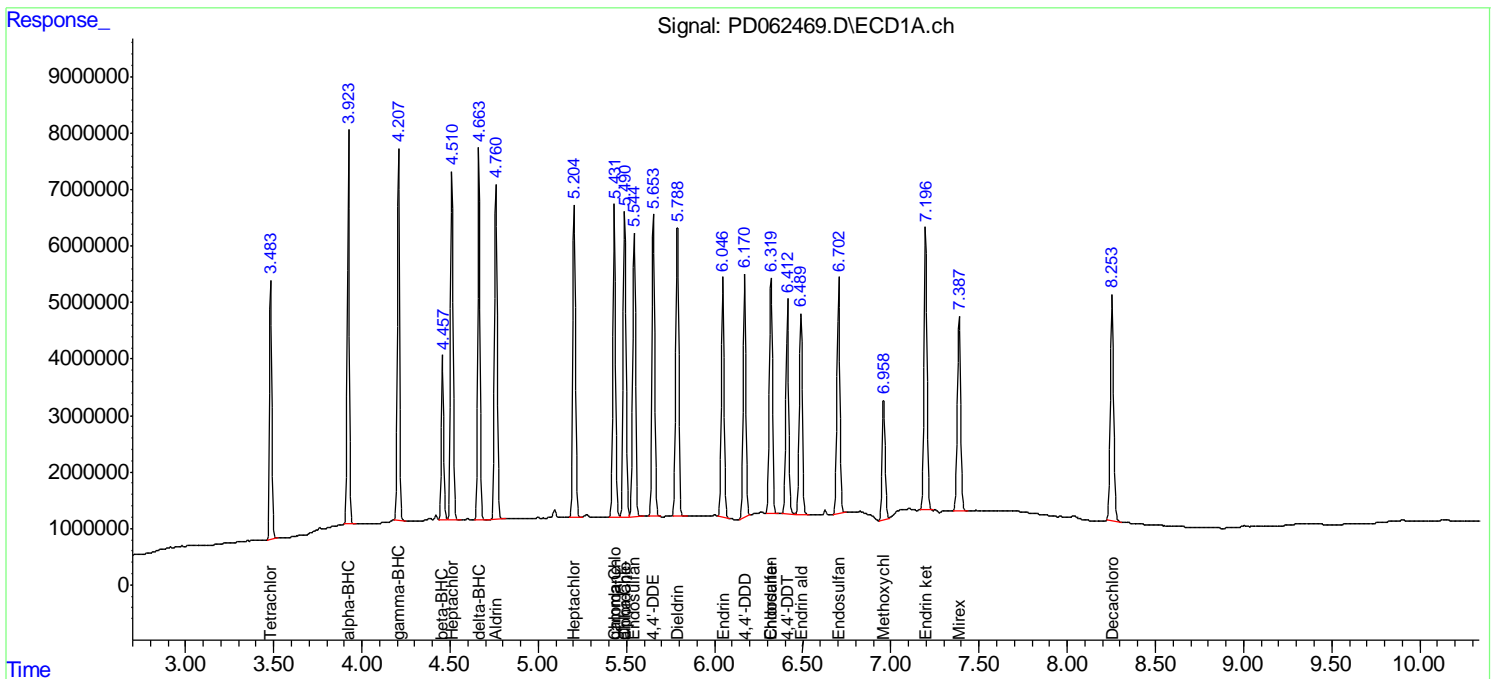
(f)=RT Delta > 1/2 Window (#)=Amounts differ by > 25% (m)=manual int.

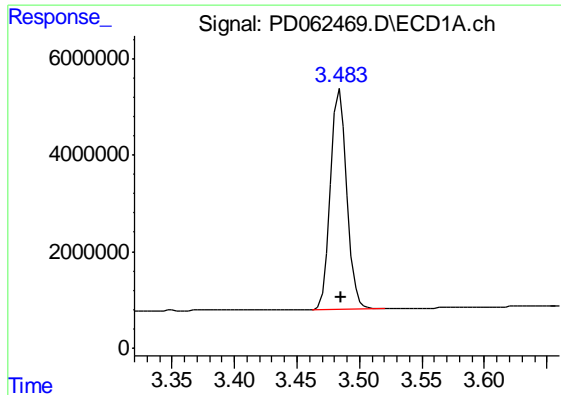
Data Path : Z:\pestpcbsrv\HPCHEM1\ECD_D\Data\PD042621\
 Data File : PD062469.D
 Signal(s) : Signal #1: ECD1A.ch Signal #2: ECD2B.ch
 Acq On : 27 Apr 2021 04:45
 Operator : AR\AJ
 Sample : PSTDCCC050
 Misc :
 ALS Vial : 4 Sample Multiplier: 1

Instrument :
 ECD_D
Client Sampled :
 PSTDCCC050

Integration File signal 1: autoint1.e
 Integration File signal 2: autoint2.e
 Quant Time: Apr 27 05:48:00 2021
 Quant Method : Z:\pestpcbsrv\HPCHEM1\ECD_D\Method\PD042321.M
 Quant Title : GC Extractables
 QLast Update : Fri Apr 23 23:19:57 2021
 Response via : Initial Calibration
 Integrator: ChemStation

Volume Inj. : 2 µl
 Signal #1 Phase : ZB-MR2 Signal #2 Phase: ZB-MR1
 Signal #1 Info : 30M x 0.32mm x0.2 Signal #2 Info : 30M x 0.32mm x 0.50µm

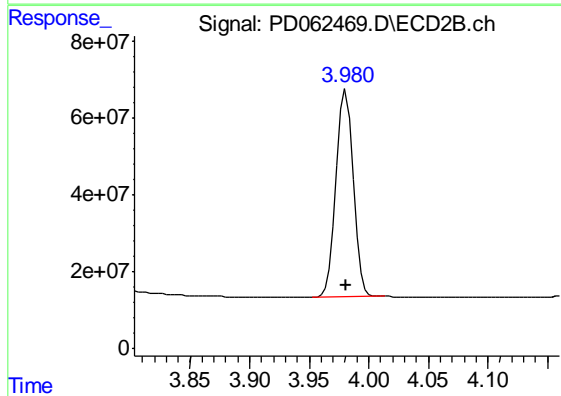




#1 Tetrachloro-m-xylene

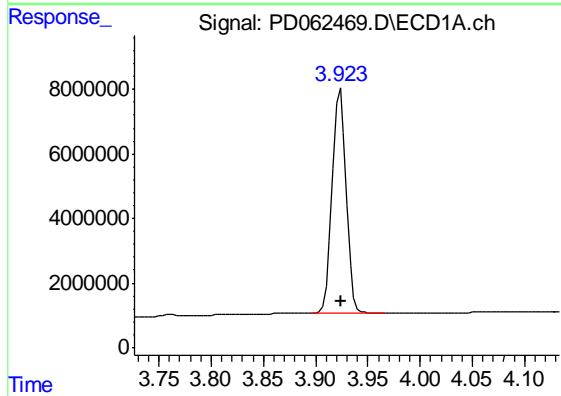
R.T.: 3.484 min
 Delta R.T.: 0.000 min
 Response: 41488602
 Conc: 50.94 ng/ml

Instrument :
 ECD_D
 ClientSampleId :
 PSTDCCC050



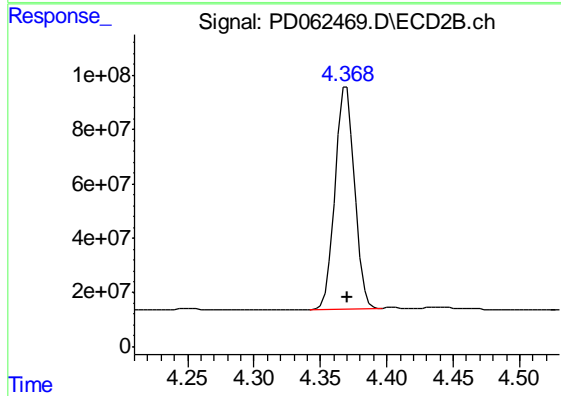
#1 Tetrachloro-m-xylene

R.T.: 3.981 min
 Delta R.T.: 0.000 min
 Response: 533652791
 Conc: 50.67 ng/ml



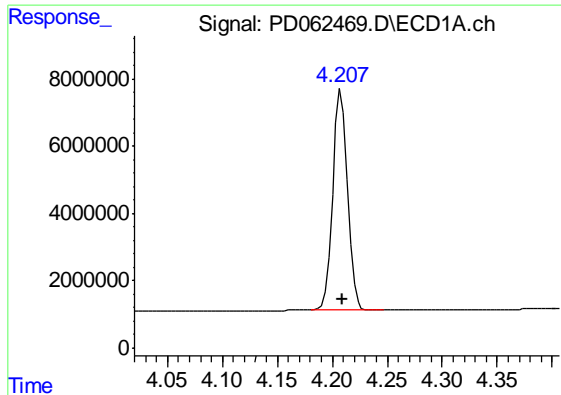
#2 alpha-BHC

R.T.: 3.924 min
 Delta R.T.: 0.000 min
 Response: 64629375
 Conc: 50.46 ng/ml



#2 alpha-BHC

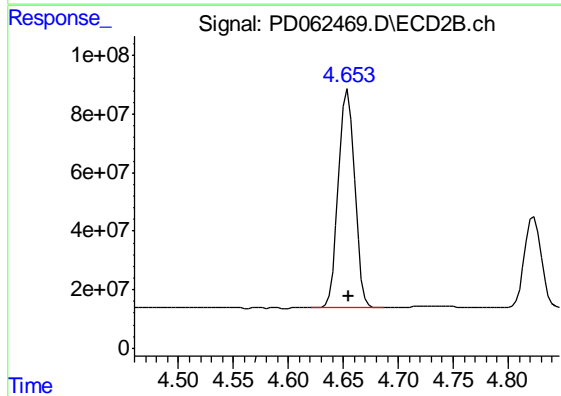
R.T.: 4.370 min
 Delta R.T.: 0.000 min
 Response: 847143044
 Conc: 50.13 ng/ml



#3 gamma-BHC (Lindane)

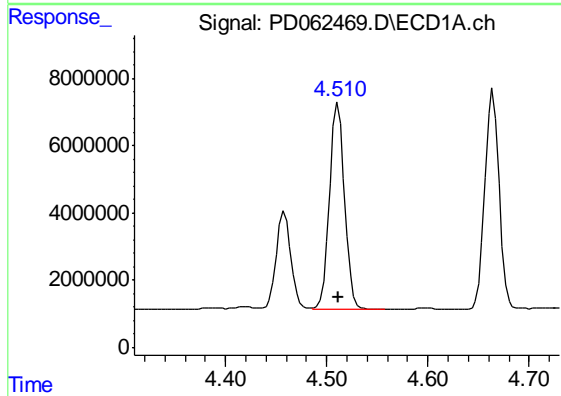
R.T.: 4.208 min
 Delta R.T.: 0.000 min
 Response: 61214491
 Conc: 49.74 ng/ml

Instrument :
 ECD_D
 ClientSampleId :
 PSTDCCC050



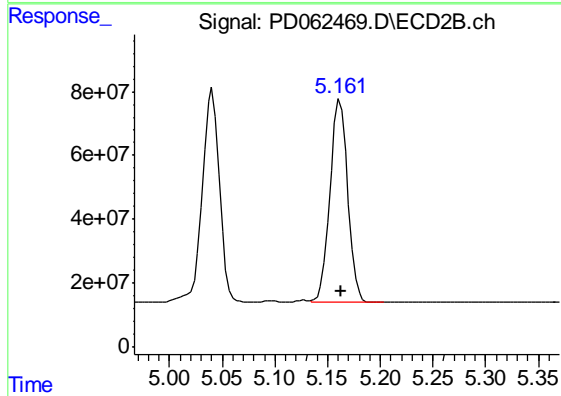
#3 gamma-BHC (Lindane)

R.T.: 4.654 min
 Delta R.T.: 0.000 min
 Response: 769507656
 Conc: 48.99 ng/ml



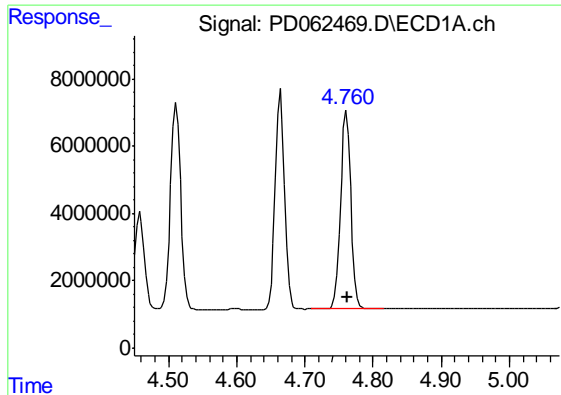
#4 Heptachlor

R.T.: 4.512 min
 Delta R.T.: 0.000 min
 Response: 63021895
 Conc: 48.08 ng/ml



#4 Heptachlor

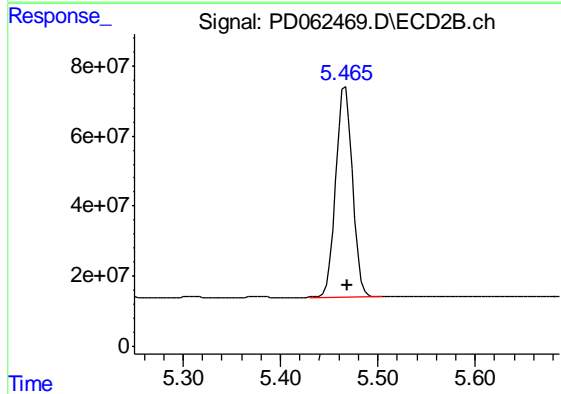
R.T.: 5.162 min
 Delta R.T.: -0.001 min
 Response: 742667564
 Conc: 47.39 ng/ml



#5 Aldrin

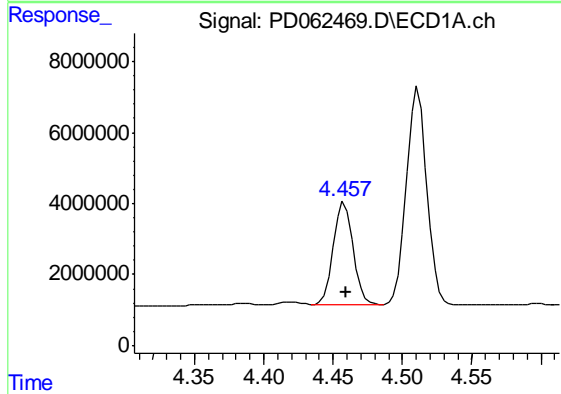
R.T.: 4.761 min
 Delta R.T.: 0.000 min
 Response: 62296337
 Conc: 49.77 ng/ml

Instrument :
 ECD_D
 ClientSampleId :
 PSTDCCC050



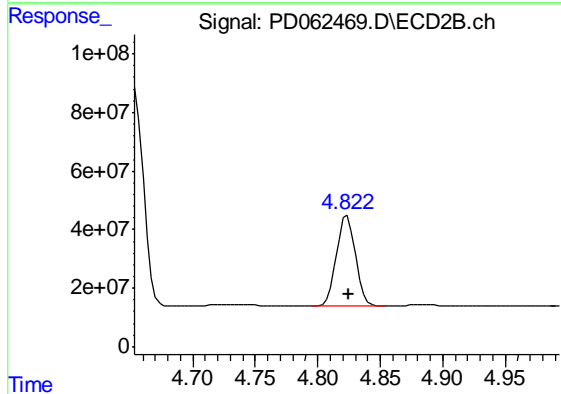
#5 Aldrin

R.T.: 5.467 min
 Delta R.T.: -0.002 min
 Response: 724824830
 Conc: 48.22 ng/ml



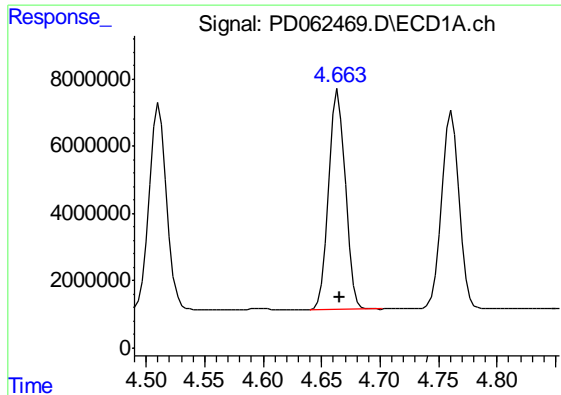
#6 beta-BHC

R.T.: 4.458 min
 Delta R.T.: 0.000 min
 Response: 28514895
 Conc: 47.36 ng/ml



#6 beta-BHC

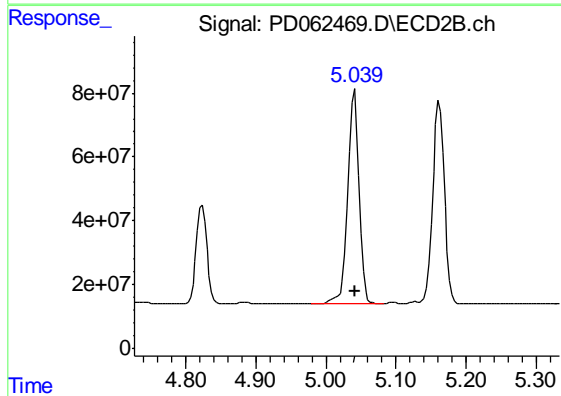
R.T.: 4.824 min
 Delta R.T.: 0.000 min
 Response: 323837611
 Conc: 48.41 ng/ml



#7 delta-BHC

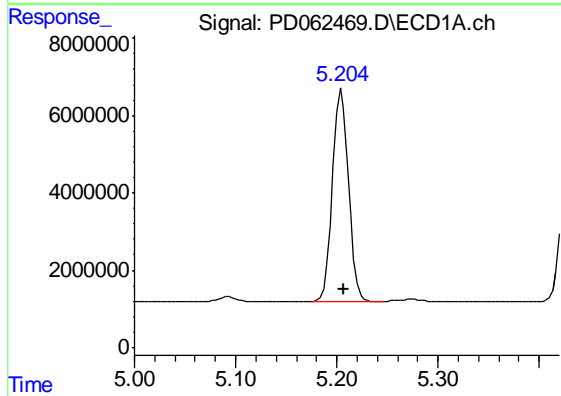
R.T.: 4.665 min
 Delta R.T.: 0.000 min
 Response: 63050576
 Conc: 49.78 ng/ml

Instrument :
 ECD_D
 ClientSampleId :
 PSTDCCC050



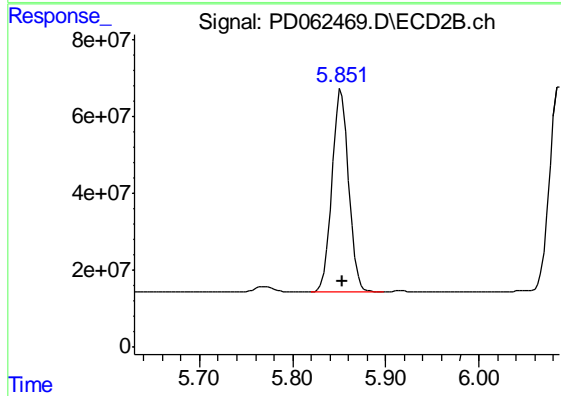
#7 delta-BHC

R.T.: 5.041 min
 Delta R.T.: 0.000 min
 Response: 755789864
 Conc: 54.18 ng/ml



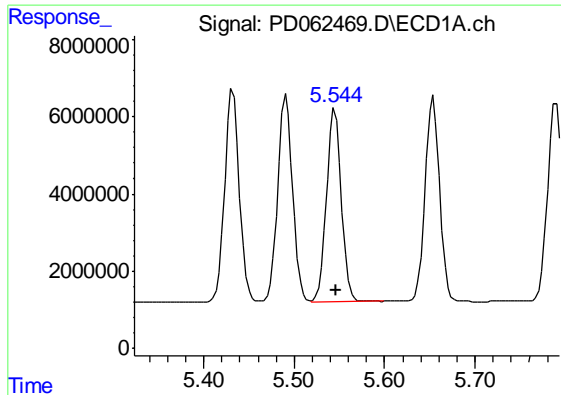
#8 Heptachlor epoxide

R.T.: 5.205 min
 Delta R.T.: -0.001 min
 Response: 60109208
 Conc: 48.96 ng/ml



#8 Heptachlor epoxide

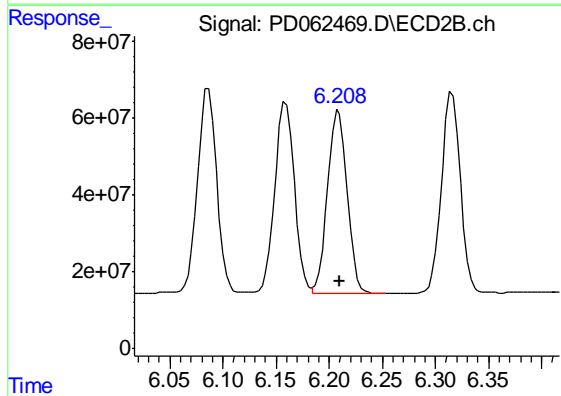
R.T.: 5.852 min
 Delta R.T.: -0.001 min
 Response: 657858862
 Conc: 47.89 ng/ml



#9 Endosulfan I

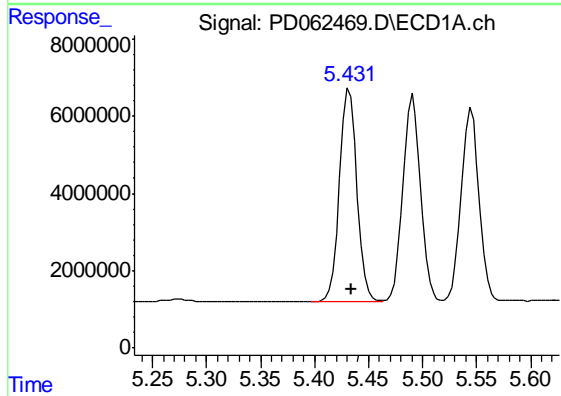
R.T.: 5.545 min
 Delta R.T.: -0.002 min
 Response: 56992622
 Conc: 48.32 ng/ml

Instrument :
 ECD_D
 ClientSampleId :
 PSTDCCC050



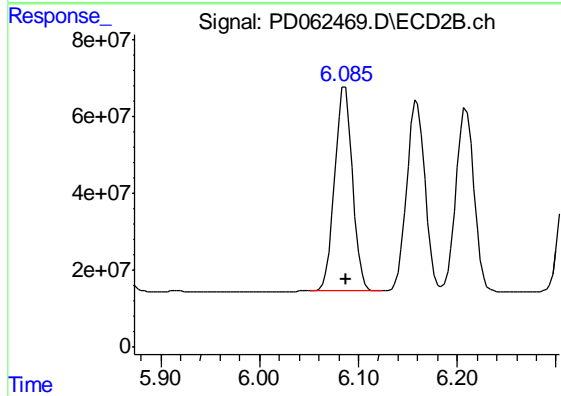
#9 Endosulfan I

R.T.: 6.209 min
 Delta R.T.: -0.001 min
 Response: 607748020
 Conc: 46.41 ng/ml



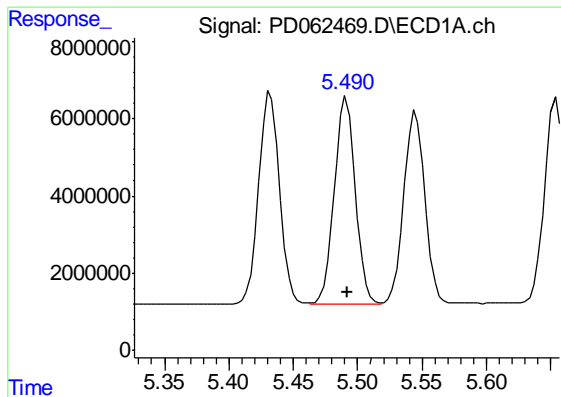
#10 gamma-Chlordane

R.T.: 5.432 min
 Delta R.T.: -0.002 min
 Response: 61969936
 Conc: 48.63 ng/ml



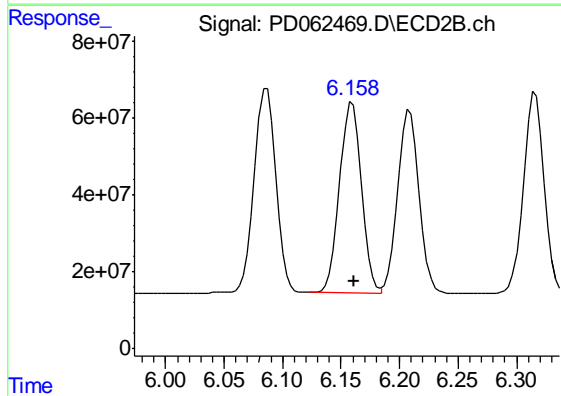
#10 gamma-Chlordane

R.T.: 6.086 min
 Delta R.T.: -0.002 min
 Response: 669586400
 Conc: 47.43 ng/ml

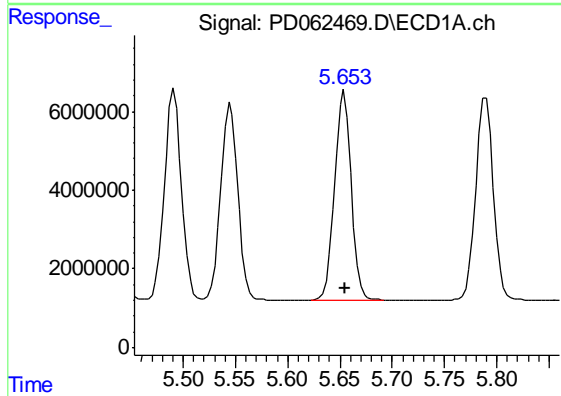


#11 alpha-Chlordane
R.T.: 5.491 min
Delta R.T.: -0.001 min
Response: 61011477
Conc: 48.63 ng/ml

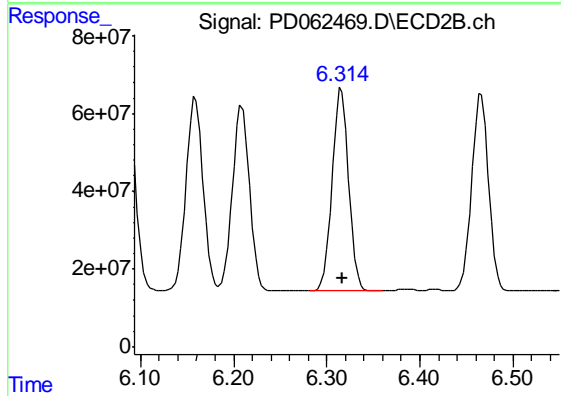
Instrument :
ECD_D
ClientSampleId :
PSTDCCC050



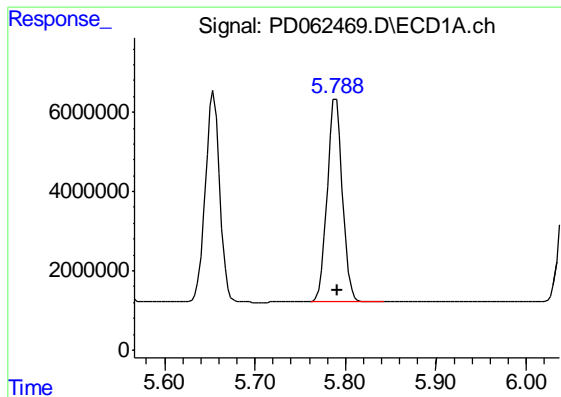
#11 alpha-Chlordane
R.T.: 6.159 min
Delta R.T.: -0.002 min
Response: 634186880
Conc: 46.20 ng/ml



#12 4,4'-DDE
R.T.: 5.654 min
Delta R.T.: 0.000 min
Response: 58544006
Conc: 48.23 ng/ml



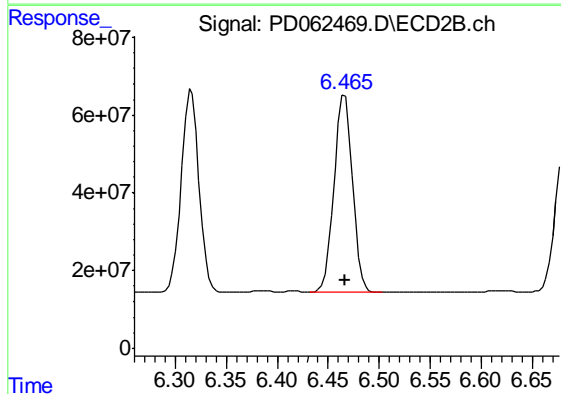
#12 4,4'-DDE
R.T.: 6.316 min
Delta R.T.: -0.001 min
Response: 640020404
Conc: 45.33 ng/ml



#13 Dieldrin

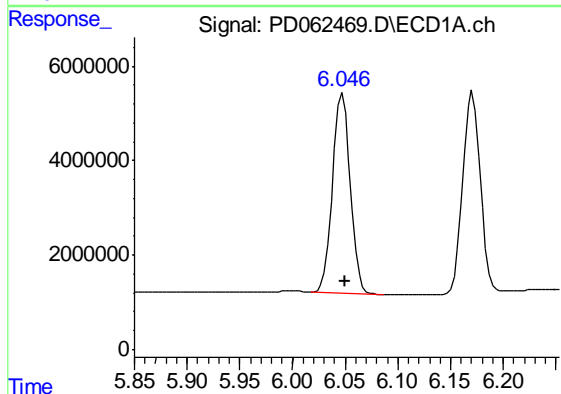
R.T.: 5.790 min
 Delta R.T.: -0.002 min
 Response: 59963967
 Conc: 46.99 ng/ml

Instrument :
 ECD_D
 ClientSampleId :
 PSTDCCC050



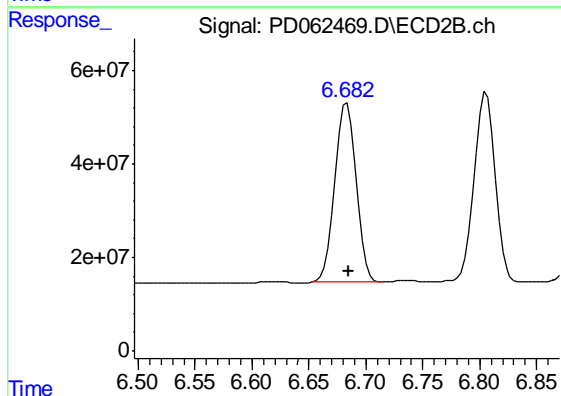
#13 Dieldrin

R.T.: 6.466 min
 Delta R.T.: 0.000 min
 Response: 635956312
 Conc: 45.21 ng/ml



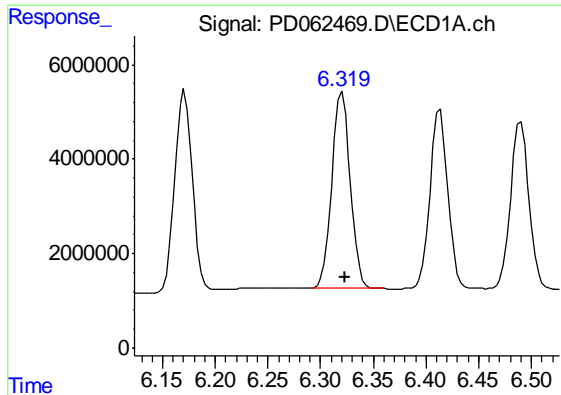
#14 Endrin

R.T.: 6.048 min
 Delta R.T.: -0.002 min
 Response: 49505583
 Conc: 42.72 ng/ml



#14 Endrin

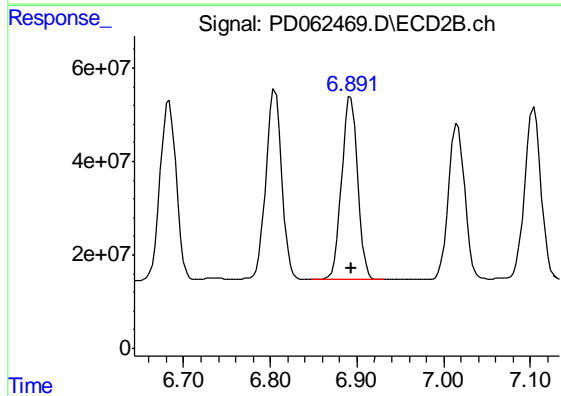
R.T.: 6.683 min
 Delta R.T.: -0.001 min
 Response: 497962272
 Conc: 40.82 ng/ml



#15 Endosulfan II

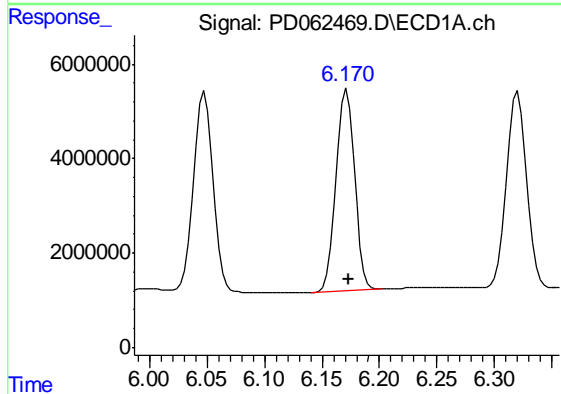
R.T.: 6.321 min
 Delta R.T.: -0.003 min
 Response: 50297187
 Conc: 44.51 ng/ml

Instrument :
 ECD_D
 ClientSampleId :
 PSTDCCC050



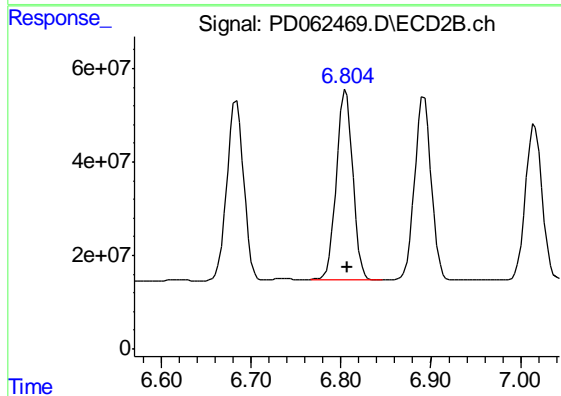
#15 Endosulfan II

R.T.: 6.893 min
 Delta R.T.: 0.000 min
 Response: 501993565
 Conc: 43.62 ng/ml



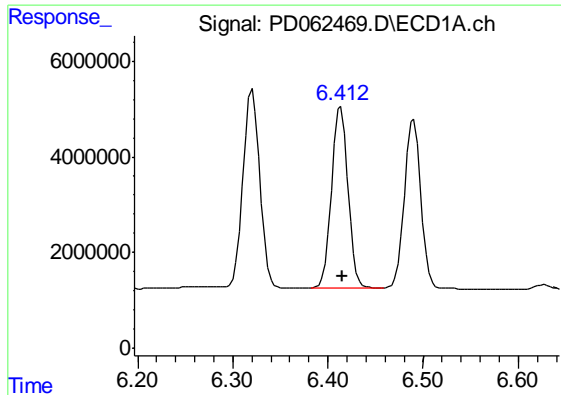
#16 4,4'-DDD

R.T.: 6.171 min
 Delta R.T.: -0.002 min
 Response: 49321310
 Conc: 49.28 ng/ml



#16 4,4'-DDD

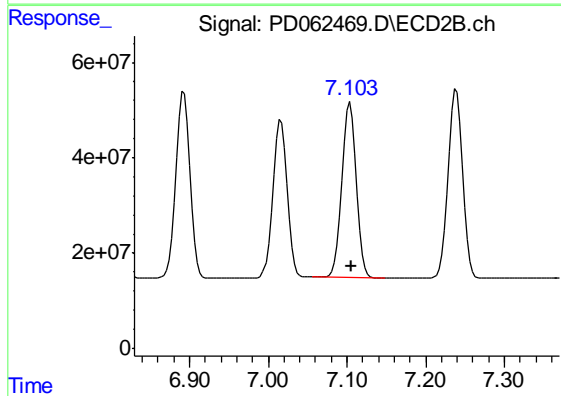
R.T.: 6.806 min
 Delta R.T.: -0.001 min
 Response: 515287676
 Conc: 46.24 ng/ml



#17 4,4'-DDT

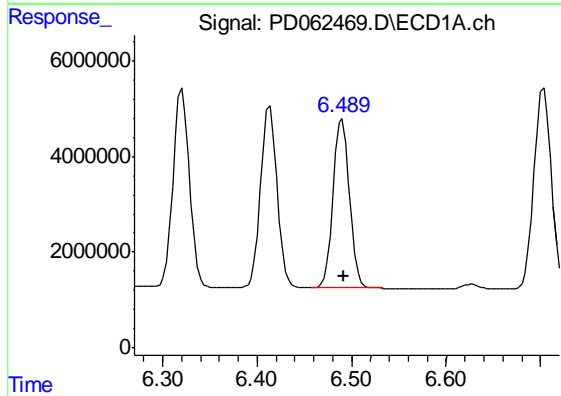
R.T.: 6.413 min
Delta R.T.: -0.002 min
Response: 45472030
Conc: 44.53 ng/ml

Instrument :
ECD_D
ClientSampleId :
PSTDCCC050



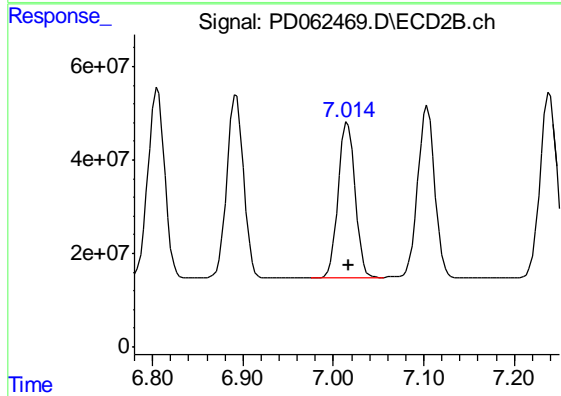
#17 4,4'-DDT

R.T.: 7.104 min
Delta R.T.: -0.001 min
Response: 479735904
Conc: 48.11 ng/ml



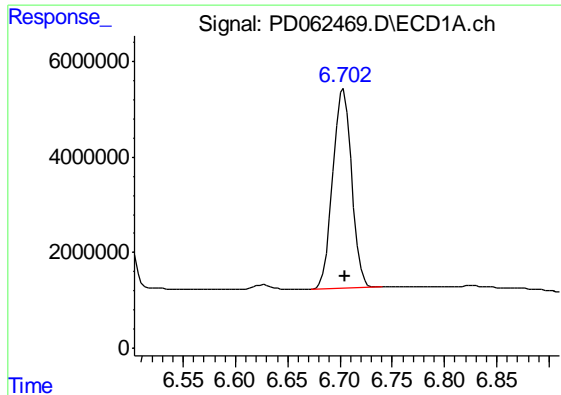
#18 Endrin aldehyde

R.T.: 6.490 min
Delta R.T.: -0.002 min
Response: 43010343
Conc: 43.54 ng/ml



#18 Endrin aldehyde

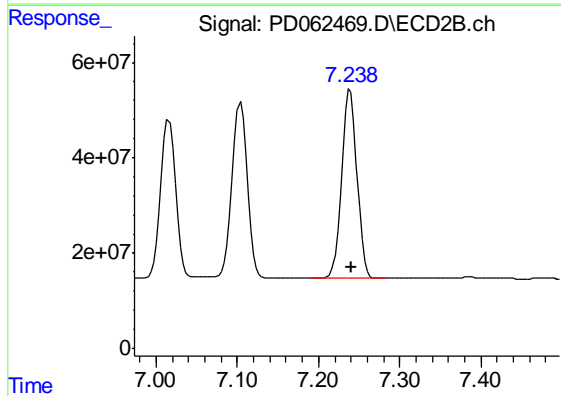
R.T.: 7.016 min
Delta R.T.: -0.002 min
Response: 426284303
Conc: 45.16 ng/ml



#19 Endosulfan Sulfate

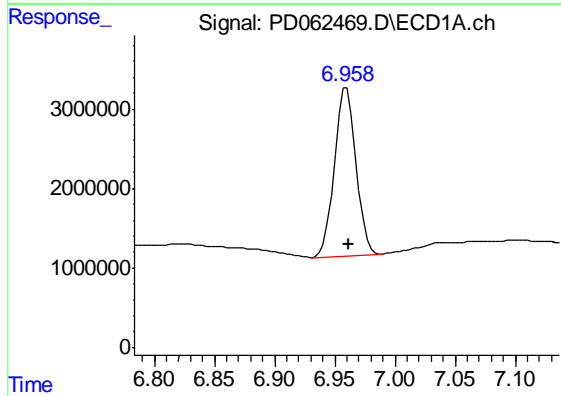
R.T.: 6.704 min
 Delta R.T.: -0.001 min
 Response: 52569523
 Conc: 44.52 ng/ml

Instrument :
 ECD_D
 ClientSampleId :
 PSTDCCC050



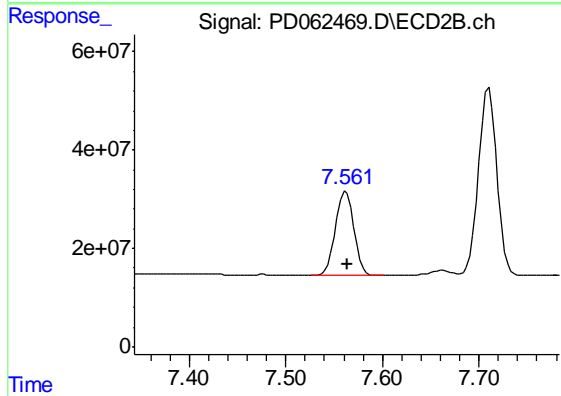
#19 Endosulfan Sulfate

R.T.: 7.239 min
 Delta R.T.: -0.002 min
 Response: 520776859
 Conc: 48.00 ng/ml



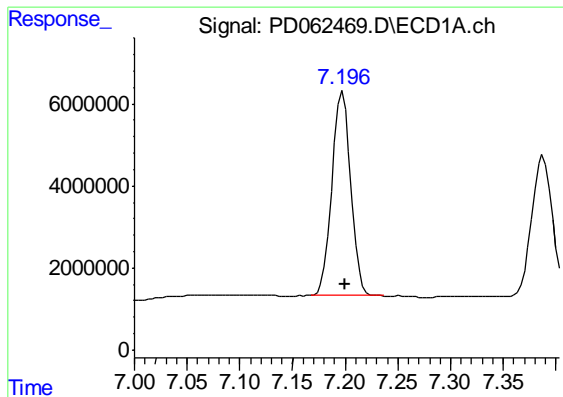
#20 Methoxychlor

R.T.: 6.960 min
 Delta R.T.: -0.002 min
 Response: 26546306
 Conc: 44.67 ng/ml



#20 Methoxychlor

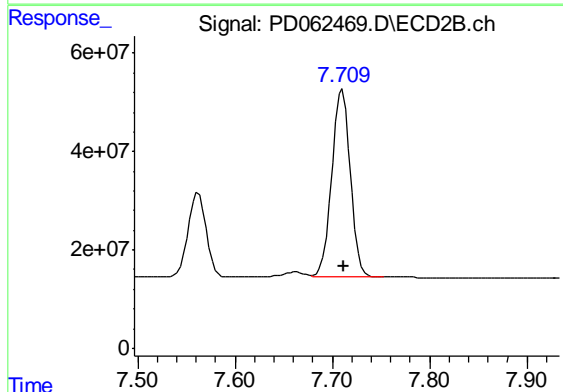
R.T.: 7.562 min
 Delta R.T.: -0.001 min
 Response: 223124767
 Conc: 45.67 ng/ml



#21 Endrin ketone

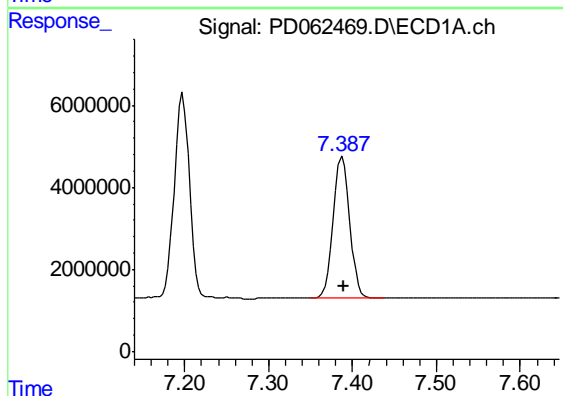
R.T.: 7.198 min
 Delta R.T.: -0.002 min
 Response: 61847815
 Conc: 50.77 ng/ml

Instrument :
 ECD_D
 ClientSampleId :
 PSTDCCC050



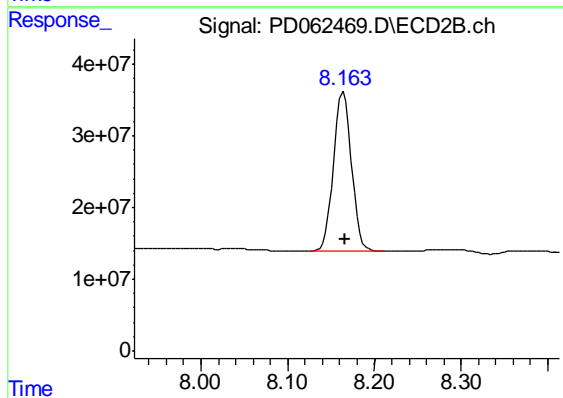
#21 Endrin ketone

R.T.: 7.710 min
 Delta R.T.: 0.000 min
 Response: 510259085
 Conc: 50.86 ng/ml



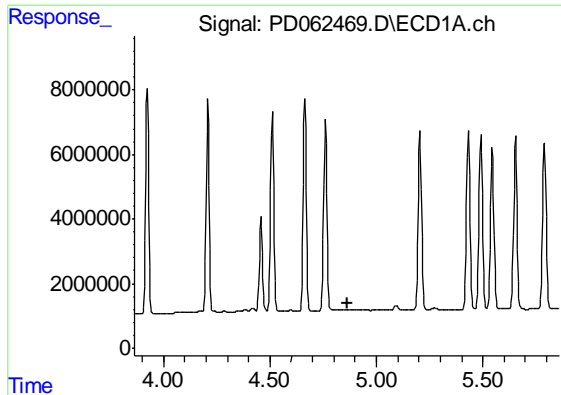
#22 Mirex

R.T.: 7.388 min
 Delta R.T.: -0.002 min
 Response: 46827291
 Conc: 46.83 ng/ml



#22 Mirex

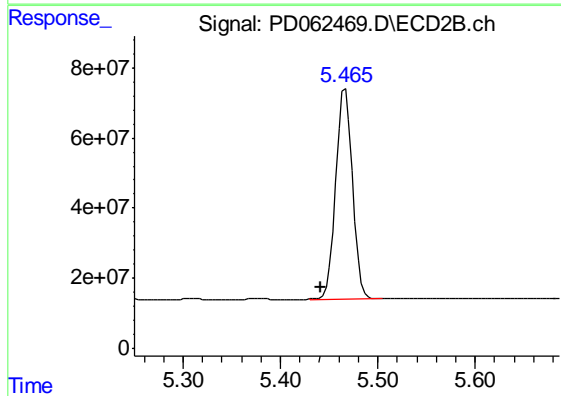
R.T.: 8.164 min
 Delta R.T.: -0.002 min
 Response: 323080570
 Conc: 51.69 ng/ml



#24 Chlordane-2

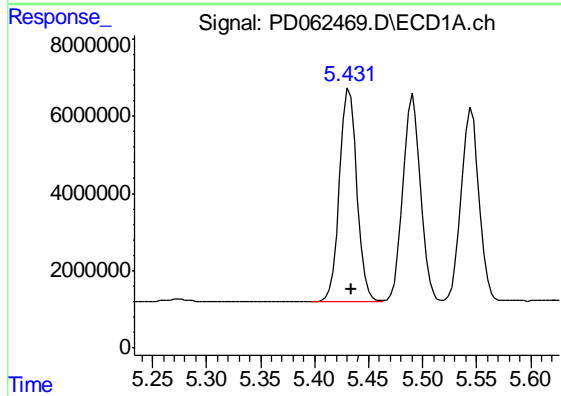
R.T.: 0.000 min
 Exp R.T. : 4.862 min
 Response: 0
 Conc: N.D.

Instrument :
 ECD_D
 ClientSampleId :
 PSTDCCC050



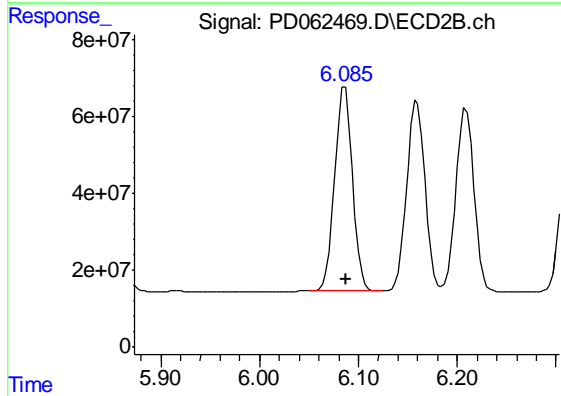
#24 Chlordane-2

R.T.: 5.467 min
 Delta R.T.: 0.025 min
 Response: 724824830
 Conc: 1522.66 ng/ml



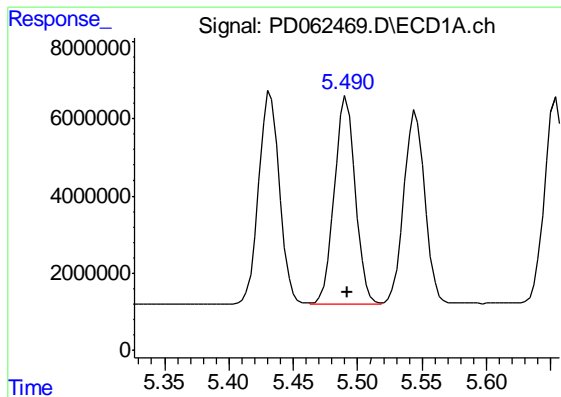
#25 Chlordane-3

R.T.: 5.432 min
 Delta R.T.: -0.002 min
 Response: 61969936
 Conc: 496.93 ng/ml



#25 Chlordane-3

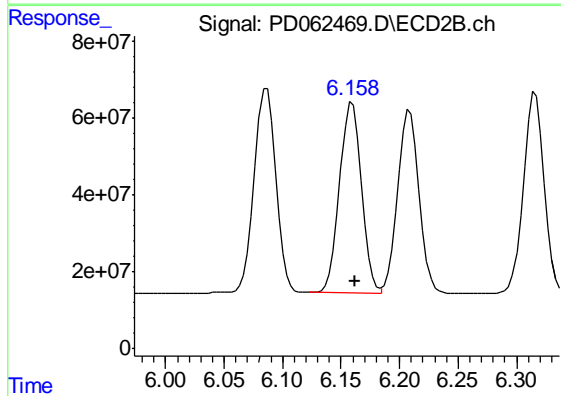
R.T.: 6.086 min
 Delta R.T.: 0.000 min
 Response: 669586400
 Conc: 340.82 ng/ml



#26 Chlordane-4

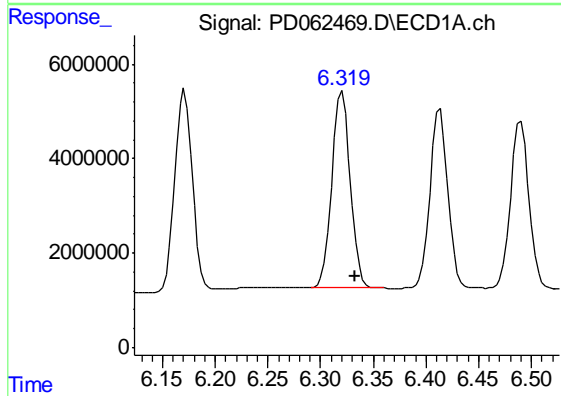
R.T.: 5.491 min
 Delta R.T.: -0.001 min
 Response: 61011477
 Conc: 582.23 ng/ml

Instrument :
 ECD_D
 ClientSampleId :
 PSTDCCC050



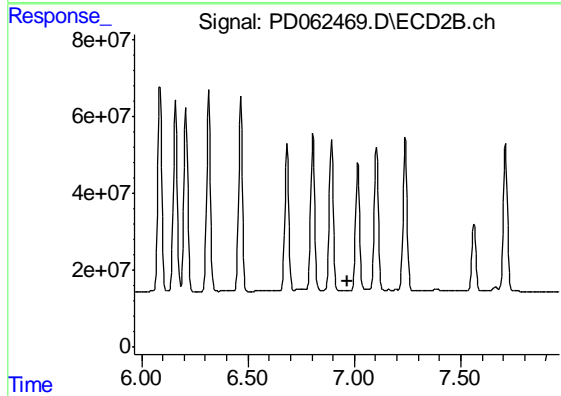
#26 Chlordane-4

R.T.: 6.159 min
 Delta R.T.: -0.002 min
 Response: 634186880
 Conc: 278.52 ng/ml



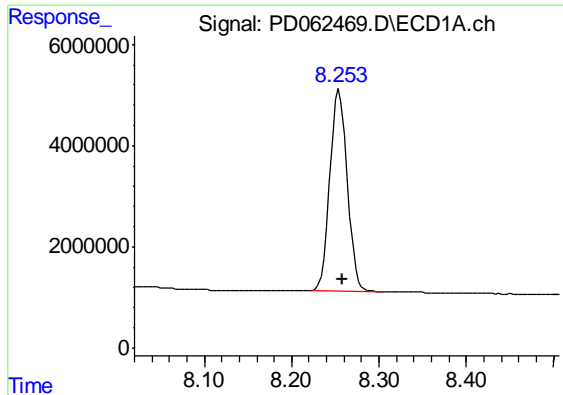
#27 Chlordane-5

R.T.: 6.321 min
 Delta R.T.: -0.012 min
 Response: 50297187
 Conc: 1109.86 ng/ml



#27 Chlordane-5

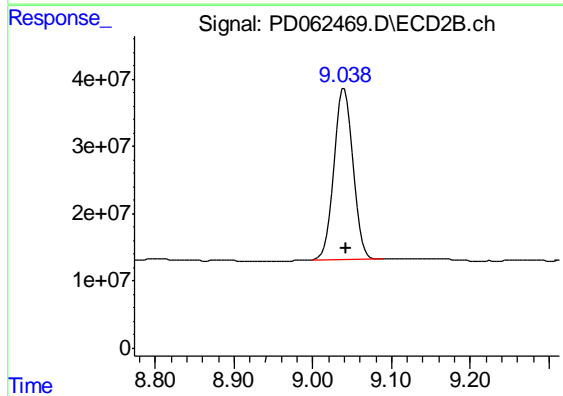
R.T.: 0.000 min
 Exp R.T. : 6.966 min
 Response: 0
 Conc: N.D.



#28 Decachlorobiphenyl

R.T.: 8.255 min
Delta R.T.: -0.003 min
Response: 55011619
Conc: 45.35 ng/ml

Instrument :
ECD_D
ClientSampleId :
PSTDCCC050



#28 Decachlorobiphenyl

R.T.: 9.040 min
Delta R.T.: -0.002 min
Response: 440743769
Conc: 51.94 ng/ml