

Data Path : Z:\pestpcbsrv\HPCHEM1\ECD_D\Data\PD042723\
 Data File : PD074985.D
 Signal(s) : Signal #1: ECD1A.ch Signal #2: ECD2B.ch
 Acq On : 27 Apr 2023 21:13
 Operator : AR\AJ
 Sample : 02418-04DL2 100X
 Misc :
 ALS Vial : 24 Sample Multiplier: 1

Instrument :
 ECD_D
 ClientSampleId :

Integration File signal 1: autoint1.e
 Integration File signal 2: autoint2.e
 Quant Time: Apr 28 03:11:39 2023
 Quant Method : Z:\pestpcbsrv\HPCHEM1\ECD_D\Method\PD042723CLP.M
 Quant Title : GC Extractables
 QLast Update : Fri Apr 28 02:34:46 2023
 Response via : Initial Calibration
 Integrator: ChemStation

Volume Inj. : 1 µl
 Signal #1 Phase : ZB-MR2 Signal #2 Phase: ZB-MR2
 Signal #1 Info : 30M x 0.32mm x0.5 Signal #2 Info : 30M x 0.32mm x 0.25µm

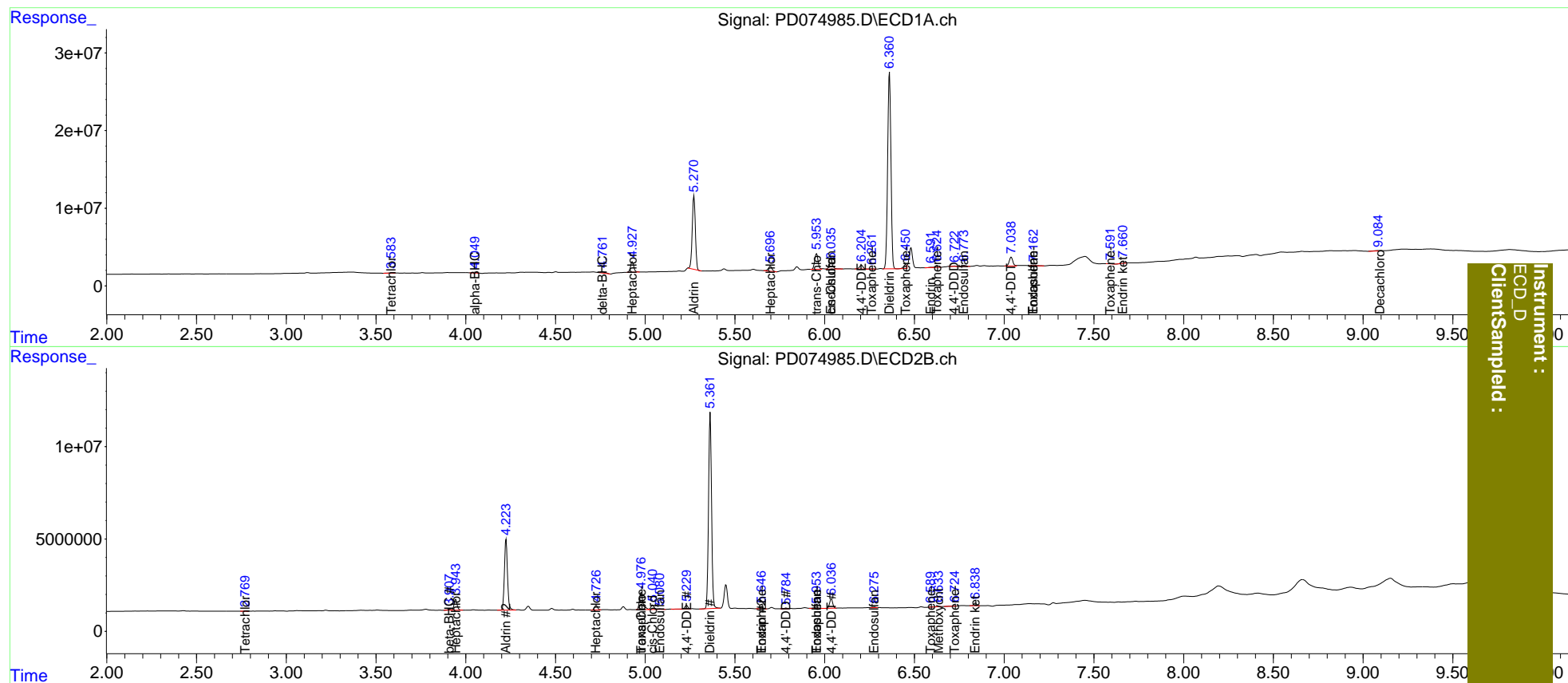
Compound	RT#1	RT#2	Resp#1	Resp#2	ng/ml	ng/ml
System Monitoring Compounds						
1) SA Tetrachlo...	3.584f	2.771	563271	169160	0.252	0.163 #
27) SA Decachlor...	9.085	0.000	877669	0	0.367	N.D. #
Target Compounds						
2) A alpha-BHC	4.051f	0.000	1343236	0	0.366	N.D. #
4) MA Heptachlor	4.928	3.944	17395430	6948202	5.021	4.982
5) MB Aldrin	5.272	4.225	114.0E6	45318010	34.036	34.463
6) B beta-BHC	0.000	3.909	0	642811	N.D.	0.945
7) B delta-BHC	4.762	0.000	3004662	0	1.004	N.D. #
8) B Heptachlo...	5.697	4.727	9317851	2906720	3.103	2.367
9) A Endosulfan I	6.036f	5.081	11592014	308588	3.981	0.270 #
10) B trans-Chl...	5.955	4.977	26017857	12217930	8.692	10.085
11) B cis-Chlor...	6.036	5.042	11592014	2971283	3.719	2.400 #
12) B 4,4'-DDE	6.205	5.231	6678467	1907900	2.274	1.687 #
13) MA Dieldrin	6.361	5.362	321.5E6	123.7E6	101.143	98.537
14) MA Endrin	6.593	5.647	496484	1527130	0.183	1.382 #
15) B Endosulfa...	6.775f	5.955	2589827	1223278	0.894	1.121 #
16) A 4,4'-DDD	6.723	5.785	694214	451690	0.287	0.468 #
17) MA 4,4'-DDT	7.039	6.037	15593310	6169882	6.206	6.220
18) B Endrin al...	6.927	0.000	86891	0	<MDL	N.D. #
19) B Endosulfa...	7.163	6.277f	2221508	418819	0.852	0.407 #
21) B Endrin ke...	7.661	6.840	3331843	1654451	1.152	1.387
22) Toxaphene-1	6.261	4.977	337046	12217930	15.093	1850.410 #
23) Toxaphene-2	6.451	5.647f	5919140	1527130	213.635	208.926
24) Toxaphene-3	6.626	5.955	3384918	1223278	177.078	145.803
25) Toxaphene-4	7.163	6.591	2221508	95966	36.479	3.911 #
26) Toxaphene-5	7.591	6.726	306546	126057	6.893	3.782 #

(f)=RT Delta > 1/2 Window (#)=Amounts differ by > 25% (m)=manual int.

Data Path : Z:\pestpcbsrv\HPCHEM1\ECD_D\Data\PD042723\
 Data File : PD074985.D
 Signal(s) : Signal #1: ECD1A.ch Signal #2: ECD2B.ch
 Acq On : 27 Apr 2023 21:13
 Operator : AR\AJ
 Sample : 02418-04DL2 100X
 Misc :
 ALS Vial : 24 Sample Multiplier: 1

Integration File signal 1: autoint1.e
 Integration File signal 2: autoint2.e
 Quant Time: Apr 28 03:11:39 2023
 Quant Method : Z:\pestpcbsrv\HPCHEM1\ECD_D\Method\PD042723CLP.M
 Quant Title : GC Extractables
 QLast Update : Fri Apr 28 02:34:46 2023
 Response via : Initial Calibration
 Integrator: ChemStation

Volume Inj. : 1 µl
 Signal #1 Phase : ZB-MR1 Signal #2 Phase: ZB-MR2
 Signal #1 Info : 30M x 0.32mm x0.5 Signal #2 Info : 30M x 0.32mm x 0.25µm



Instrument : ECD_D
 Client Sampled :