

Data Path : Z:\pestpcbsrv\HPCHEM1\ECD_D\Data\PD042723\
 Data File : PD074988.D
 Signal(s) : Signal #1: ECD1A.ch Signal #2: ECD2B.ch
 Acq On : 27 Apr 2023 21:54
 Operator : AR\AJ
 Sample : PB152373BS
 Misc :
 ALS Vial : 27 Sample Multiplier: 1

Instrument :
 ECD_D
ClientSampleId :
 PLCS373

Manual Integrations
APPROVED
 Reviewed By :Abdul Mirza 04/28/2023
 Supervised By :Ankita Jodhani 05/01/2023

Integration File signal 1: autoint1.e
 Integration File signal 2: autoint2.e
 Quant Time: Apr 28 03:12:23 2023
 Quant Method : Z:\pestpcbsrv\HPCHEM1\ECD_D\Method\PD042723CLP.M
 Quant Title : GC Extractables
 QLast Update : Fri Apr 28 02:34:46 2023
 Response via : Initial Calibration
 Integrator: ChemStation

Volume Inj. : 1 µl
 Signal #1 Phase : ZB-MR1 Signal #2 Phase: ZB-MR2
 Signal #1 Info : 30M x 0.32mm x0.5 Signal #2 Info : 30M x 0.32mm x 0.25µm

Compound	RT#1	RT#2	Resp#1	Resp#2	ng/ml	ng/ml

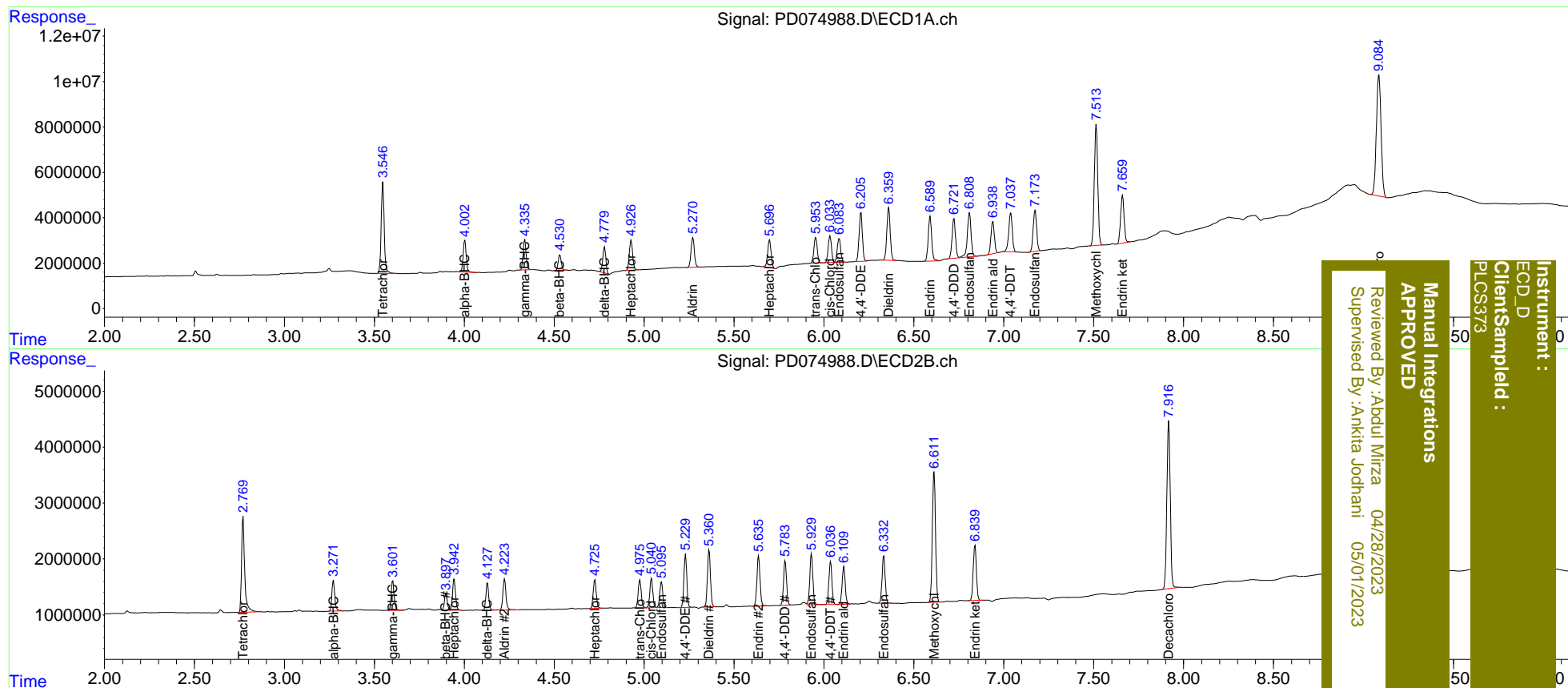
System Monitoring Compounds						
1) SA Tetrachlo...	3.547	2.770	47051615	20921949	21.064	20.182
2) SA Decachlor...	9.086	7.917	97246788	39084343	40.716	40.687
Target Compounds						
2) A alpha-BHC	4.003	3.273	16449272	6204877	4.482	4.309
3) MA gamma-BHC...	4.337	3.603	15523974	6026551	4.540	4.331
4) MA Heptachlor	4.928	3.944	17001445	6427972	4.908	4.609
5) MB Aldrin	5.271	4.224	16838324	6552093	5.028	4.983
6) B beta-BHC	4.532	3.899	8085405	3173536	5.485	4.663
7) B delta-BHC	4.780	4.129	13533044	5371846	4.521	3.819
8) B Heptachlo...	5.698	4.726	16080477	5951657	5.354	4.847
9) A Endosulfan I	6.085	5.097	13929949	5425530	4.784	4.755
10) B trans-Chl...	5.955	4.977	14574635	5955688	4.869	4.916
11) B cis-Chlor...	6.034	5.041	15154467	6118953	4.862	4.942
12) B 4,4'-DDE	6.206	5.231	27363784	10745209	9.316	9.499
13) MA Dieldrin	6.359	5.360	30350792	11980390	9.549m	9.544m
14) MA Endrin	6.590	5.637	26355158	10793710	9.728	9.766
15) B Endosulfa...	6.809	5.931	28281205	10787470	9.764	9.889
16) A 4,4'-DDD	6.723	5.785	22867861	9171218	9.457	9.492
17) MA 4,4'-DDT	7.037	6.037	23923258	9115342	9.521m	9.189
18) B Endrin al...	6.938	6.111	18921458	7887347	8.454m	8.881
19) B Endosulfa...	7.174	6.333	24054154	10094379	9.226	9.818
20) A Methoxychlor	7.514	6.612	71351185	28888094	49.492	52.299
21) B Endrin ke...	7.660	6.840	28229356	12003952	9.757	10.067

(f)=RT Delta > 1/2 Window (#)=Amounts differ by > 25% (m)=manual int.

Data Path : Z:\pestpcbsrv\HPCHEM1\ECD_D\Data\PD042723\
 Data File : PD074988.D
 Signal(s) : Signal #1: ECD1A.ch Signal #2: ECD2B.ch
 Acq On : 27 Apr 2023 21:54
 Operator : AR\AJ
 Sample : PB152373BS
 Misc :
 ALS Vial : 27 Sample Multiplier: 1

Integration File signal 1: autoint1.e
 Integration File signal 2: autoint2.e
 Quant Time: Apr 28 03:12:23 2023
 Quant Method : Z:\pestpcbsrv\HPCHEM1\ECD_D\Method\PD042723CLP.M
 Quant Title : GC Extractables
 QLast Update : Fri Apr 28 02:34:46 2023
 Response via : Initial Calibration
 Integrator: ChemStation

Volume Inj. : 1 µl
 Signal #1 Phase : ZB-MR1 Signal #2 Phase: ZB-MR2
 Signal #1 Info : 30M x 0.32mm x0.5 Signal #2 Info : 30M x 0.32mm x 0.25µm



Manual Integrations APPROVED
 Reviewed By: Abdul Mirza 04/28/2023
 Supervised By: Ankita Jodhani 05/01/2023
 Instrument : ECD_D
 Client Sampled : PLCS373