

Data Path : Z:\pestpcbsrv\HPCHEM1\ECD\_D\Data\PD042723\  
 Data File : PD075004.D  
 Signal(s) : Signal #1: ECD1A.ch Signal #2: ECD2B.ch  
 Acq On : 28 Apr 2023 03:09  
 Operator : AR\AJ  
 Sample : 02418-08  
 Misc :  
 ALS Vial : 40 Sample Multiplier: 1

**Instrument :**  
 ECD\_D  
**ClientSampleId :**  
 EW8Z4

**Manual Integrations**  
**APPROVED**  
 Reviewed By :Abdul Mirza 05/02/2023  
 Supervised By :Ankita Jodhani 05/02/2023

Integration File signal 1: autoint1.e  
 Integration File signal 2: autoint2.e  
 Quant Time: Apr 28 07:51:38 2023  
 Quant Method : Z:\pestpcbsrv\HPCHEM1\ECD\_D\Method\PD042723CLP.M  
 Quant Title : GC Extractables  
 QLast Update : Fri Apr 28 02:34:46 2023  
 Response via : Initial Calibration  
 Integrator: ChemStation

Volume Inj. : 1 µl  
 Signal #1 Phase : ZB-MR1 Signal #2 Phase: ZB-MR2  
 Signal #1 Info : 30M x 0.32mm x0.5 Signal #2 Info : 30M x 0.32mm x 0.25µm

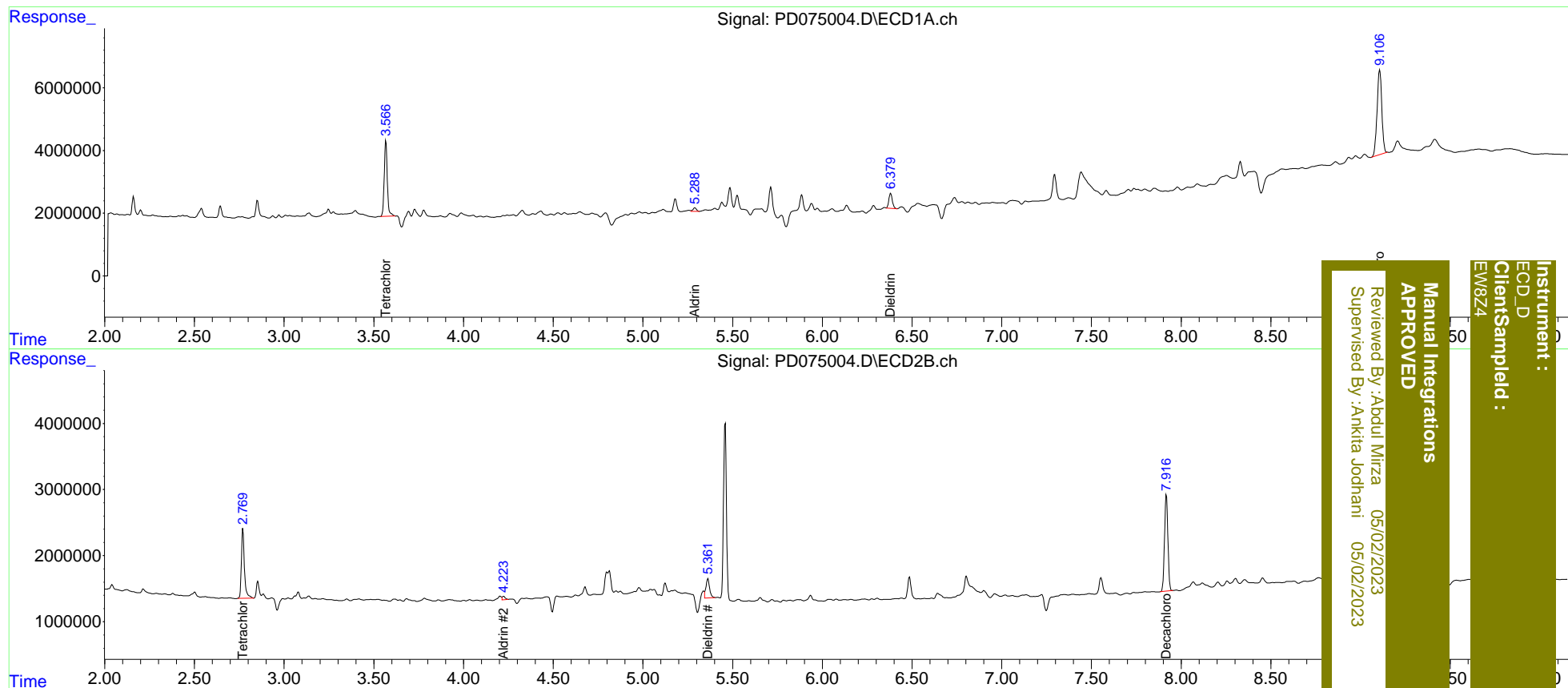
Compound	RT#1	RT#2	Resp#1	Resp#2	ng/ml	ng/ml
-----						
System Monitoring Compounds						
1) SA Tetrachlo...	3.568	2.770	28761650	12316373	12.876	11.881
27) SA Decachlor...	9.106	7.918	49580378	19099107	20.759m	19.882
Target Compounds						
5) MB Aldrin	5.288	4.224	1428644	572223	0.427m	0.435
13) MA Dieldrin	6.379	5.361	6458172	4108553	2.032m	3.273m#
-----						

(f)=RT Delta > 1/2 Window (#)=Amounts differ by > 25% (m)=manual int.

Data Path : Z:\pestpcbsrv\HPCHEM1\ECD\_D\Data\PD042723\  
 Data File : PD075004.D  
 Signal(s) : Signal #1: ECD1A.ch Signal #2: ECD2B.ch  
 Acq On : 28 Apr 2023 03:09  
 Operator : AR\AJ  
 Sample : 02418-08  
 Misc :  
 ALS Vial : 40 Sample Multiplier: 1

Integration File signal 1: autoint1.e  
 Integration File signal 2: autoint2.e  
 Quant Time: Apr 28 07:51:38 2023  
 Quant Method : Z:\pestpcbsrv\HPCHEM1\ECD\_D\Method\PD042723CLP.M  
 Quant Title : GC Extractables  
 QLast Update : Fri Apr 28 02:34:46 2023  
 Response via : Initial Calibration  
 Integrator: ChemStation

Volume Inj. : 1 µl  
 Signal #1 Phase : ZB-MR1 Signal #2 Phase: ZB-MR2  
 Signal #1 Info : 30M x 0.32mm x 0.5 Signal #2 Info : 30M x 0.32mm x 0.25µm



Instrument : ECD\_D  
 ClientSampleId : EW/8Z4  
 Manual Integrations  
 APPROVED  
 Reviewed By : Abdul Mirza 05/02/2023  
 Supervised By : Ankita Jodhani 05/02/2023