

Data Path : Z:\pestpcbsrv\HPCHEM1\ECD\_D\Data\PD042724\  
 Data File : PD082637.D  
 Signal(s) : Signal #1: ECD1A.ch Signal #2: ECD2B.ch  
 Acq On : 26 Apr 2024 23:27  
 Operator : AR\AJ  
 Sample : P2203-22MSD  
 Misc :  
 ALS Vial : 27 Sample Multiplier: 1

Integration File signal 1: autoint1.e  
 Integration File signal 2: autoint2.e  
 Quant Time: Apr 27 06:31:07 2024  
 Quant Method : Z:\pestpcbsrv\HPCHEM1\ECD\_D\Method\PD042424CLP.M  
 Quant Title : GC Extractables  
 QLast Update : Wed Apr 24 16:11:14 2024  
 Response via : Initial Calibration  
 Integrator: ChemStation

Volume Inj. : 1 µl  
 Signal #1 Phase : ZB-MR1 Signal #2 Phase: ZB-MR2  
 Signal #1 Info : 30M x 0.32mm x0.5 Signal #2 Info : 30M x 0.32mm x 0.25µm

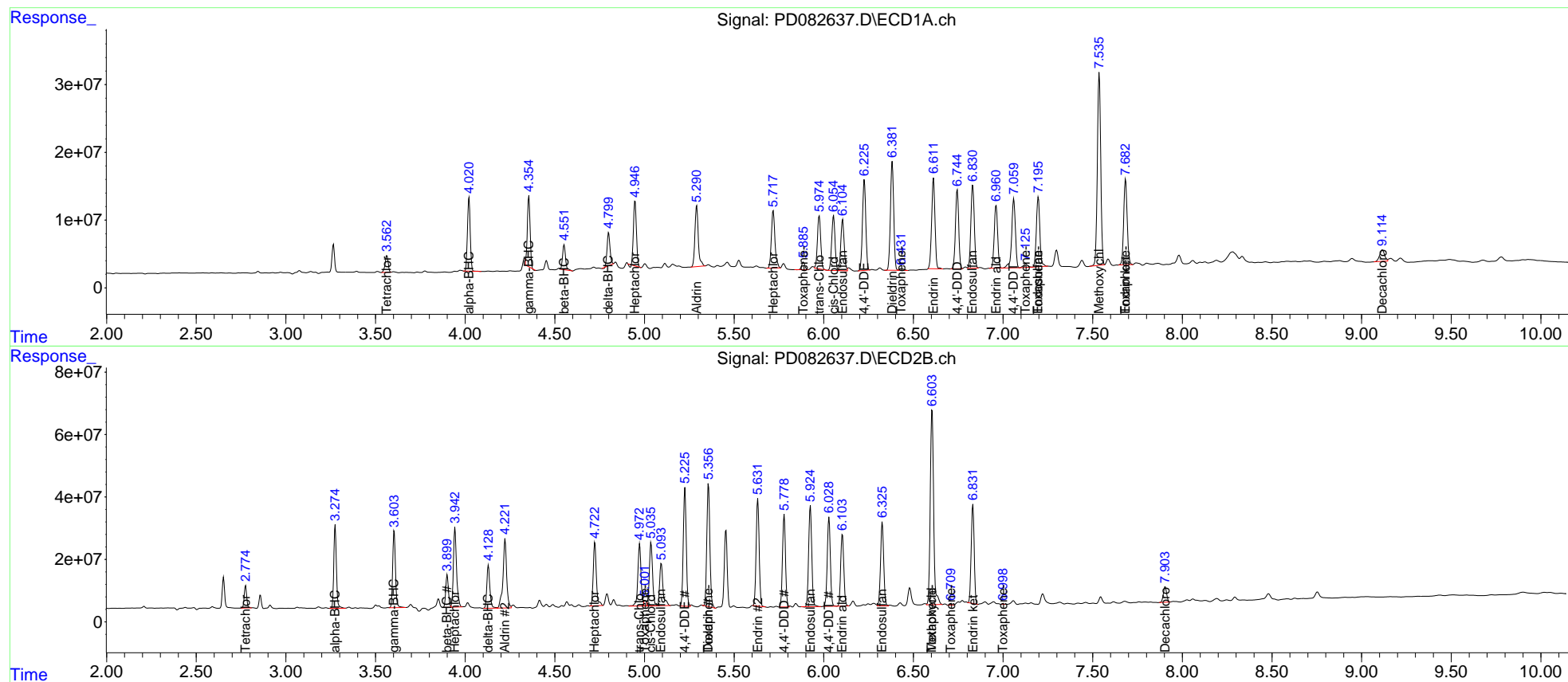
	Compound	RT#1	RT#2	Resp#1	Resp#2	ng/ml	ng/ml
-----							
System Monitoring Compounds							
1)	SA Tetrachlo...	3.564	2.775	29311079	67847692	20.728	19.387
27)	SA Decachlor...	9.116	7.905	32553897	63825720	16.707	16.913
Target Compounds							
2)	A alpha-BHC	4.021	3.275	117.4E6	271.5E6	49.205	48.364
3)	MA gamma-BHC...	4.355	3.604	112.3E6	263.6E6	47.990	47.645
4)	MA Heptachlor	4.948	3.943	110.1E6	308.2E6	46.959	59.786 #
5)	MB Aldrin	5.292	4.223	117.6E6	312.0E6	51.877	60.169
6)	B beta-BHC	4.552	3.900	42197659	106.9E6	40.216	46.974
7)	B delta-BHC	4.800	4.130	53904036	161.9E6	22.887	29.557 #
8)	B Heptachlo...	5.718	4.724	116.5E6	240.1E6	54.442	49.478
9)	A Endosulfan I	6.106	5.094	96634578	174.8E6	47.639	40.489
10)	B trans-Chl...	5.975	4.973	100.2E6	244.1E6	48.036	51.695
11)	B cis-Chlor...	6.055	5.037	103.5E6	249.0E6	48.457	51.525
12)	B 4,4'-DDE	6.226	5.226	171.7E6	432.6E6	81.479	94.462
13)	MA Dieldrin	6.382	5.357	203.9E6	467.7E6	94.987	96.963
14)	MA Endrin	6.612	5.632	173.5E6	400.3E6	94.935	94.584
15)	B Endosulfa...	6.831	5.925	161.4E6	389.3E6	86.388	95.871
16)	A 4,4'-DDD	6.745	5.779	146.9E6	343.1E6	96.200	96.370
17)	MA 4,4'-DDT	7.060	6.029	146.7E6	343.4E6	91.169	91.359
18)	B Endrin al...	6.961	6.104	122.4E6	278.3E6	83.997	84.584
19)	B Endosulfa...	7.197	6.327	139.5E6	327.2E6	82.354	85.174
20)	A Methoxychlor	7.537	6.604	371.3E6	820.7E6	436.683	435.331
21)	B Endrin ke...	7.684	6.832	169.5E6	364.1E6	93.645	84.930
22)	Toxaphene-1	5.887	5.003	13881550	16613674	2151.141	677.299 #
23)	Toxaphene-2	6.433f	5.357	4829367	467.7E6	260.815	18400.343 #
24)	Toxaphene-3	7.127	6.604	8626748	820.7E6	168.098	9099.140 #
25)	Toxaphene-4	7.197	6.710	139.5E6	2440388	3610.644	20.045 #
26)	Toxaphene-5	7.684f	7.001f	169.5E6	83117	5867.752	1.758 #

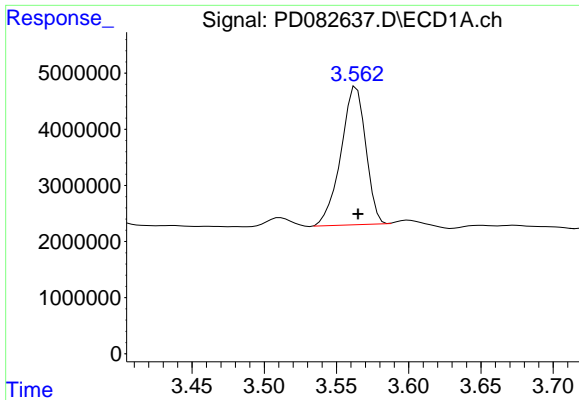
(f)=RT Delta > 1/2 Window (#)=Amounts differ by > 25% (m)=manual int.

Data Path : Z:\pestpcbsrv\HPCHEM1\ECD\_D\Data\PD042724\  
 Data File : PD082637.D  
 Signal(s) : Signal #1: ECD1A.ch Signal #2: ECD2B.ch  
 Acq On : 26 Apr 2024 23:27  
 Operator : AR\AJ  
 Sample : P2203-22MSD  
 Misc :  
 ALS Vial : 27 Sample Multiplier: 1

Integration File signal 1: autoint1.e  
 Integration File signal 2: autoint2.e  
 Quant Time: Apr 27 06:31:07 2024  
 Quant Method : Z:\pestpcbsrv\HPCHEM1\ECD\_D\Method\PD042424CLP.M  
 Quant Title : GC Extractables  
 QLast Update : Wed Apr 24 16:11:14 2024  
 Response via : Initial Calibration  
 Integrator: ChemStation

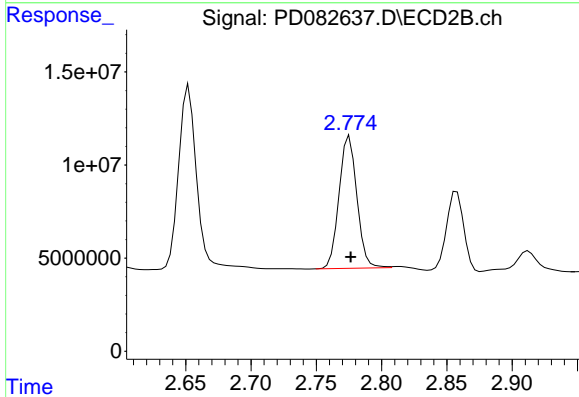
Volume Inj. : 1 µl  
 Signal #1 Phase : ZB-MR1 Signal #2 Phase: ZB-MR2  
 Signal #1 Info : 30M x 0.32mm x0.5 Signal #2 Info : 30M x 0.32mm x 0.25µm





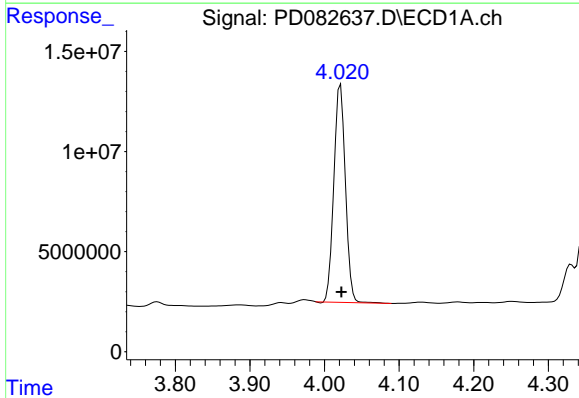
#1 Tetrachloro-m-xylene

R.T.: 3.564 min  
Delta R.T.: -0.001 min  
Response: 29311079  
Conc: 20.73 ng/ml



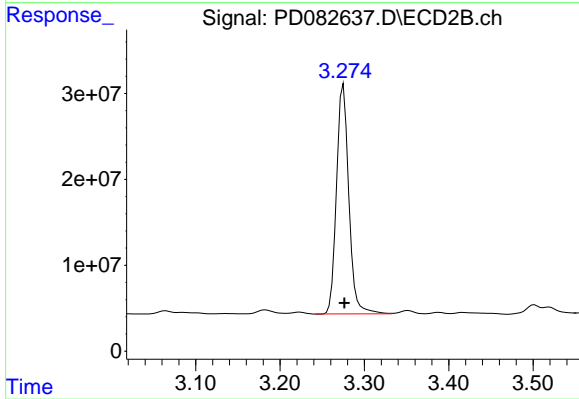
#1 Tetrachloro-m-xylene

R.T.: 2.775 min  
Delta R.T.: 0.000 min  
Response: 67847692  
Conc: 19.39 ng/ml



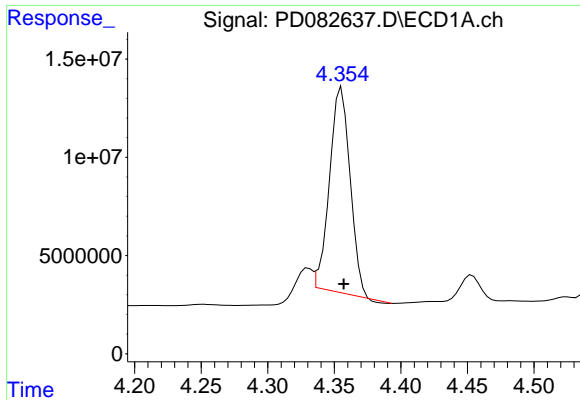
#2 alpha-BHC

R.T.: 4.021 min  
Delta R.T.: -0.001 min  
Response: 117403834  
Conc: 49.21 ng/ml

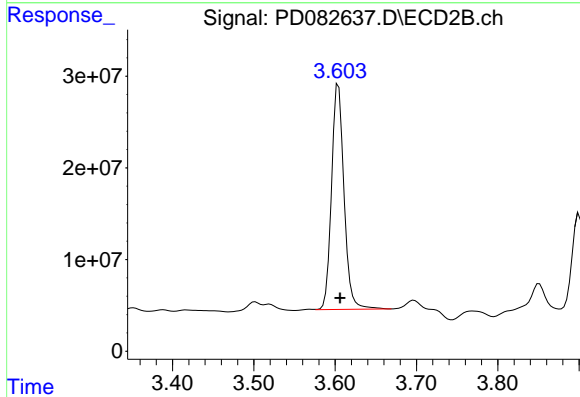


#2 alpha-BHC

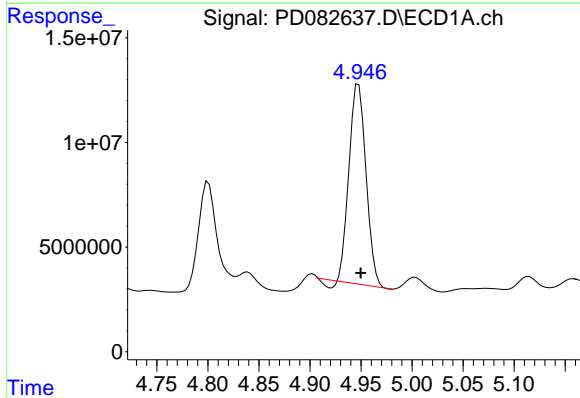
R.T.: 3.275 min  
Delta R.T.: -0.001 min  
Response: 271539564  
Conc: 48.36 ng/ml



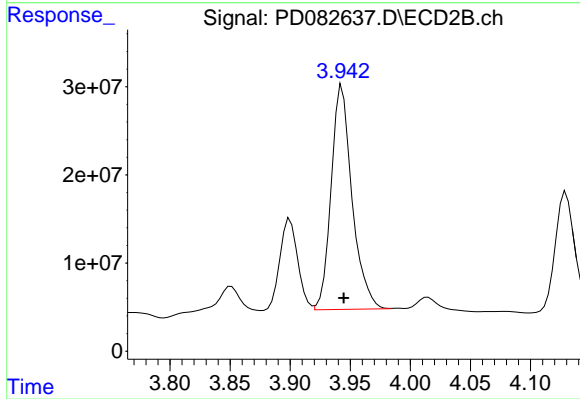
#3 gamma-BHC (Lindane)  
R.T.: 4.355 min  
Delta R.T.: -0.002 min  
Response: 112268968  
Conc: 47.99 ng/ml



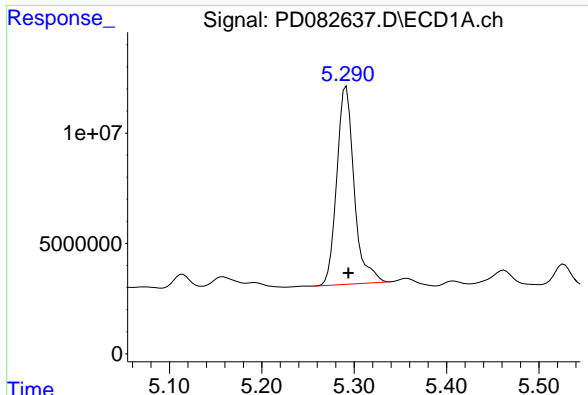
#3 gamma-BHC (Lindane)  
R.T.: 3.604 min  
Delta R.T.: -0.002 min  
Response: 263608076  
Conc: 47.65 ng/ml



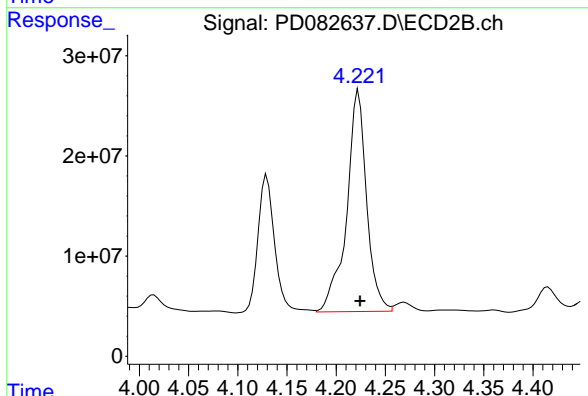
#4 Heptachlor  
R.T.: 4.948 min  
Delta R.T.: -0.002 min  
Response: 110074166  
Conc: 46.96 ng/ml



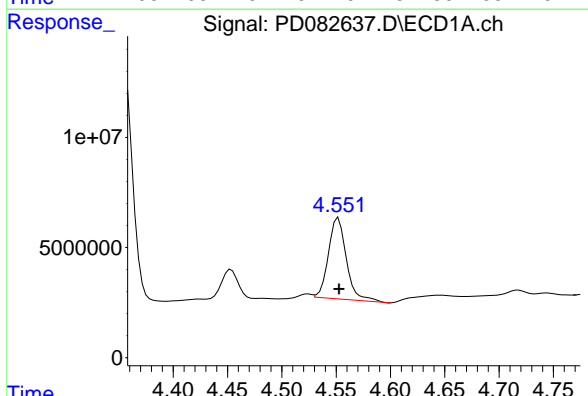
#4 Heptachlor  
R.T.: 3.943 min  
Delta R.T.: -0.001 min  
Response: 308167000  
Conc: 59.79 ng/ml



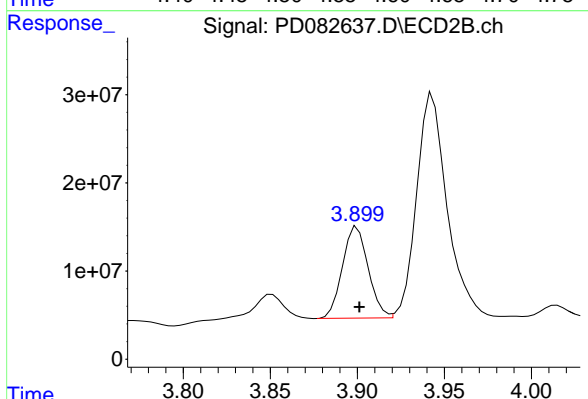
#5 Aldrin  
R.T.: 5.292 min  
Delta R.T.: -0.002 min  
Response: 117612497  
Conc: 51.88 ng/ml



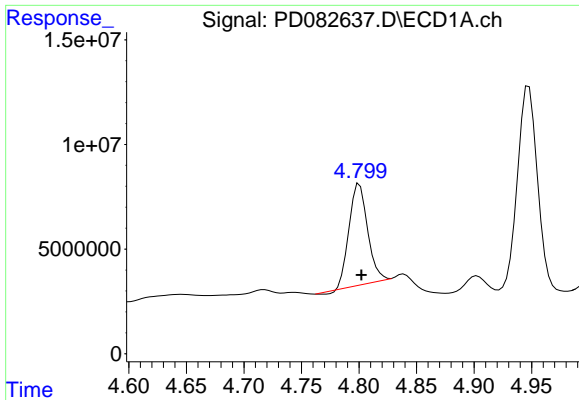
#5 Aldrin  
R.T.: 4.223 min  
Delta R.T.: -0.002 min  
Response: 312041800  
Conc: 60.17 ng/ml



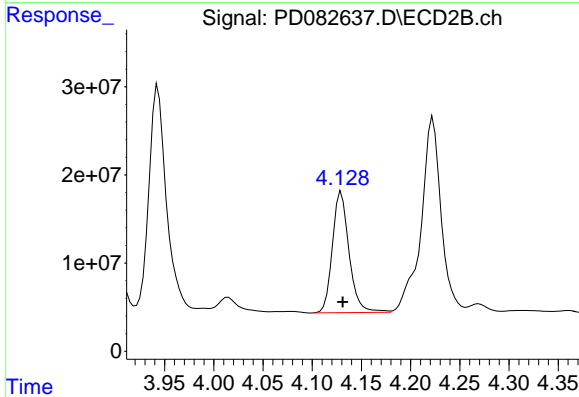
#6 beta-BHC  
R.T.: 4.552 min  
Delta R.T.: 0.000 min  
Response: 42197659  
Conc: 40.22 ng/ml



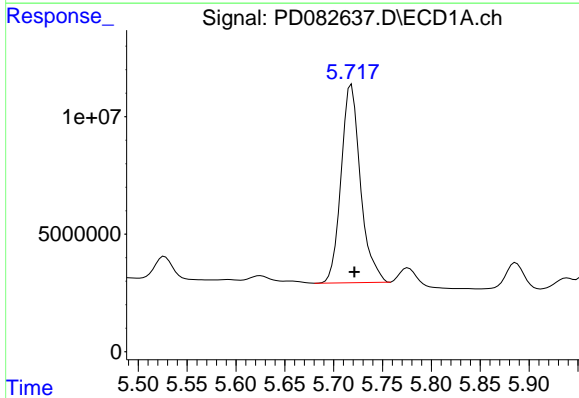
#6 beta-BHC  
R.T.: 3.900 min  
Delta R.T.: -0.001 min  
Response: 106853952  
Conc: 46.97 ng/ml



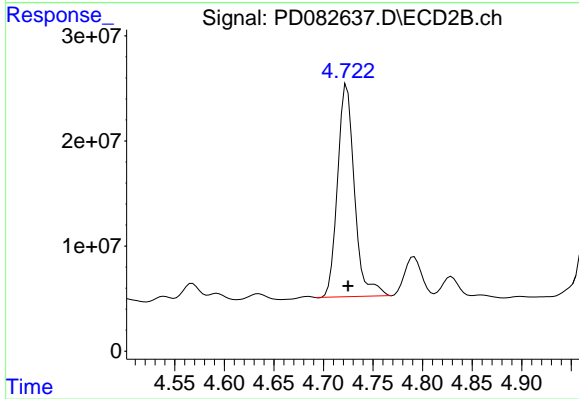
#7 delta-BHC  
R.T.: 4.800 min  
Delta R.T.: -0.002 min  
Response: 53904036  
Conc: 22.89 ng/ml



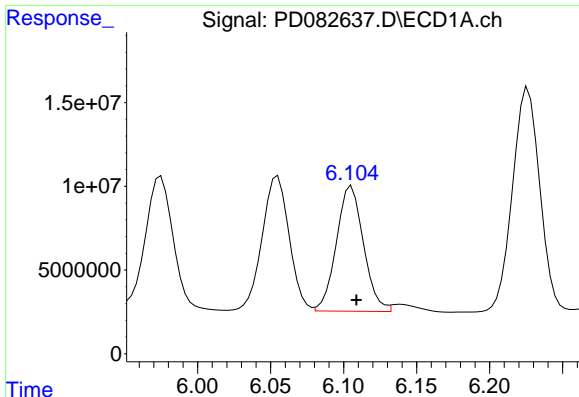
#7 delta-BHC  
R.T.: 4.130 min  
Delta R.T.: -0.001 min  
Response: 161900379  
Conc: 29.56 ng/ml



#8 Heptachlor epoxide  
R.T.: 5.718 min  
Delta R.T.: -0.003 min  
Response: 116485193  
Conc: 54.44 ng/ml

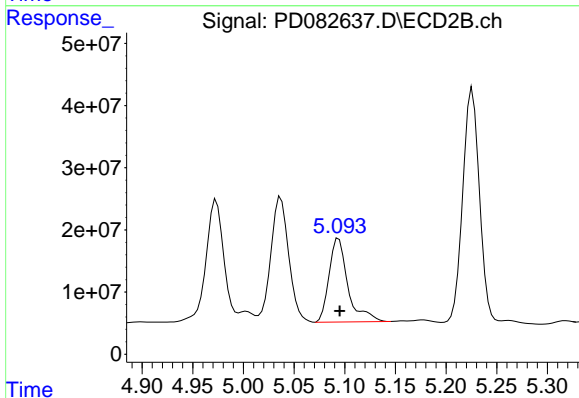


#8 Heptachlor epoxide  
R.T.: 4.724 min  
Delta R.T.: -0.001 min  
Response: 240059648  
Conc: 49.48 ng/ml



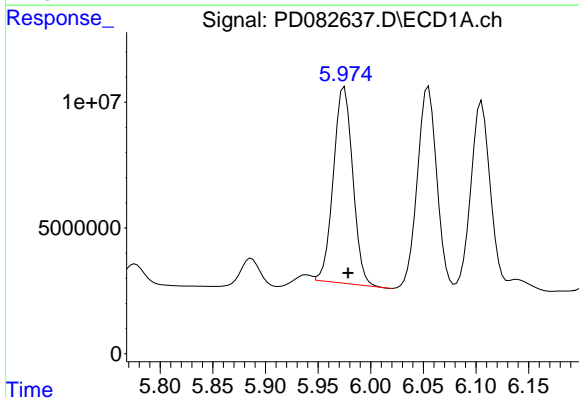
#9 Endosulfan I

R.T.: 6.106 min  
Delta R.T.: -0.003 min  
Response: 96634578  
Conc: 47.64 ng/ml



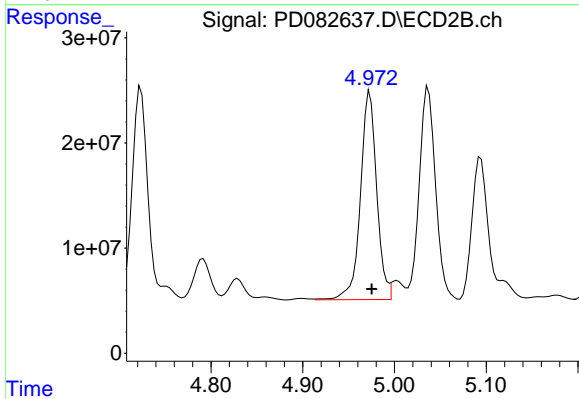
#9 Endosulfan I

R.T.: 5.094 min  
Delta R.T.: 0.000 min  
Response: 174847847  
Conc: 40.49 ng/ml



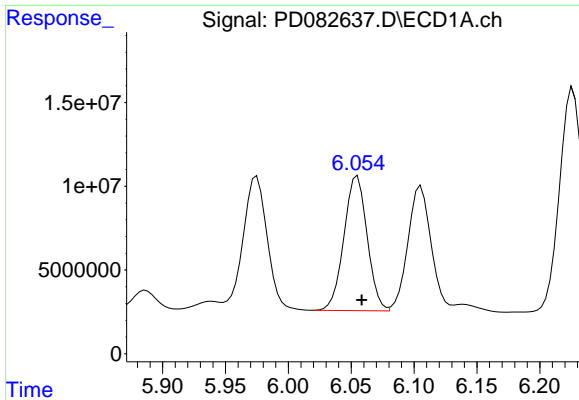
#10 trans-Chlordane

R.T.: 5.975 min  
Delta R.T.: -0.003 min  
Response: 100240671  
Conc: 48.04 ng/ml

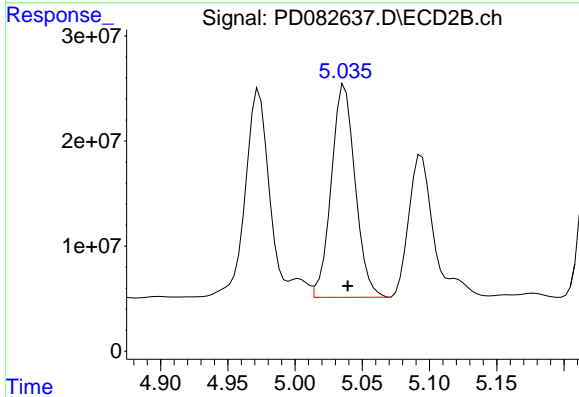


#10 trans-Chlordane

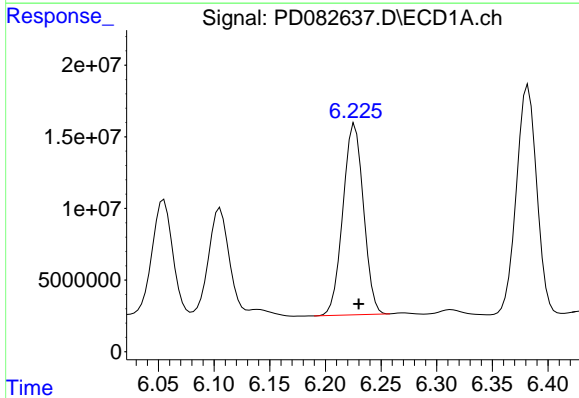
R.T.: 4.973 min  
Delta R.T.: -0.002 min  
Response: 244076210  
Conc: 51.70 ng/ml



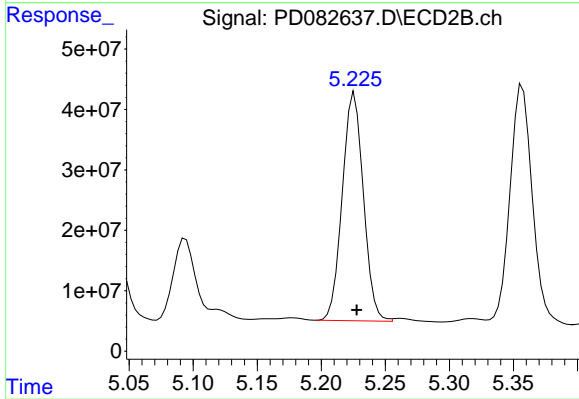
#11 cis-Chlordane  
R.T.: 6.055 min  
Delta R.T.: -0.003 min  
Response: 103499050  
Conc: 48.46 ng/ml



#11 cis-Chlordane  
R.T.: 5.037 min  
Delta R.T.: -0.002 min  
Response: 248980546  
Conc: 51.52 ng/ml

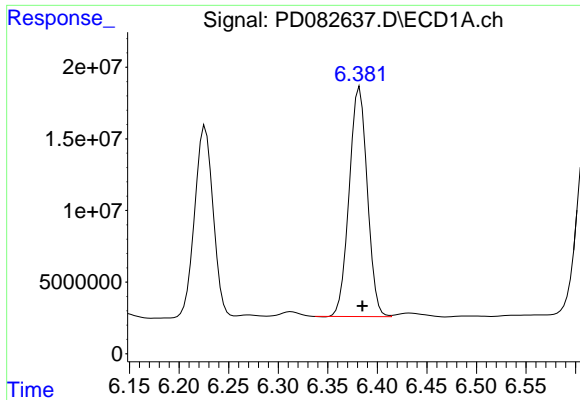


#12 4,4'-DDE  
R.T.: 6.226 min  
Delta R.T.: -0.004 min  
Response: 171714244  
Conc: 81.48 ng/ml



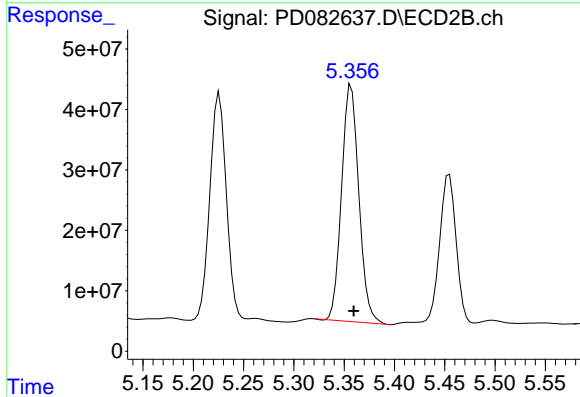
#12 4,4'-DDE  
R.T.: 5.226 min  
Delta R.T.: -0.002 min  
Response: 432570381  
Conc: 94.46 ng/ml





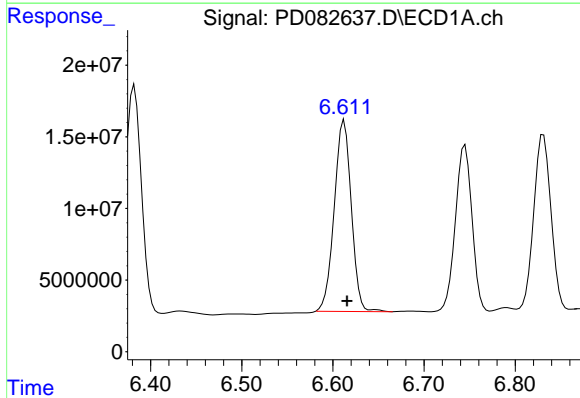
#13 Dieldrin

R.T.: 6.382 min  
Delta R.T.: -0.003 min  
Response: 203927505  
Conc: 94.99 ng/ml



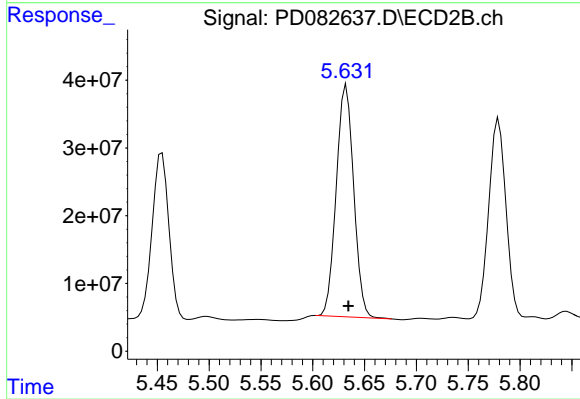
#13 Dieldrin

R.T.: 5.357 min  
Delta R.T.: -0.002 min  
Response: 467709772  
Conc: 96.96 ng/ml



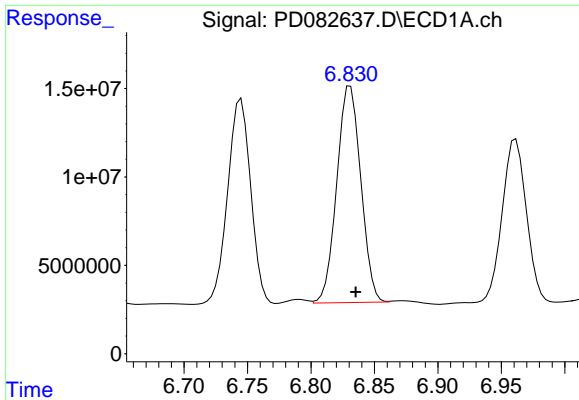
#14 Endrin

R.T.: 6.612 min  
Delta R.T.: -0.003 min  
Response: 173461141  
Conc: 94.94 ng/ml



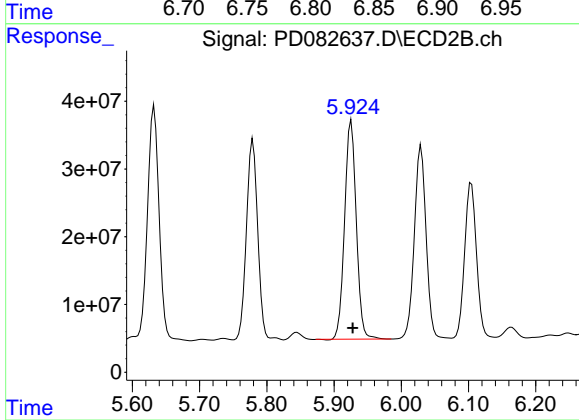
#14 Endrin

R.T.: 5.632 min  
Delta R.T.: -0.002 min  
Response: 400323695  
Conc: 94.58 ng/ml



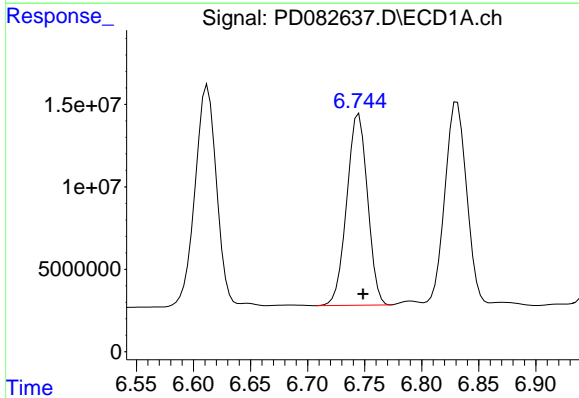
#15 Endosulfan II

R.T.: 6.831 min  
Delta R.T.: -0.004 min  
Response: 161374986  
Conc: 86.39 ng/ml



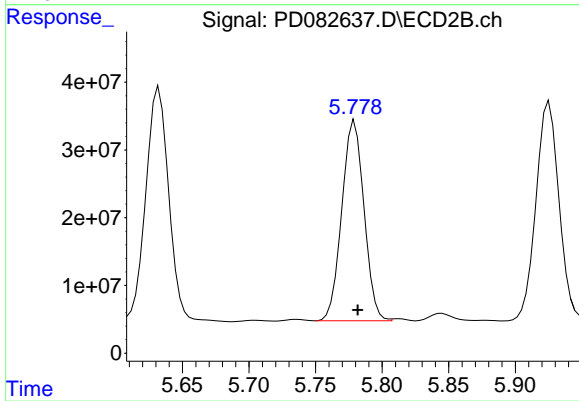
#15 Endosulfan II

R.T.: 5.925 min  
Delta R.T.: -0.002 min  
Response: 389326631  
Conc: 95.87 ng/ml



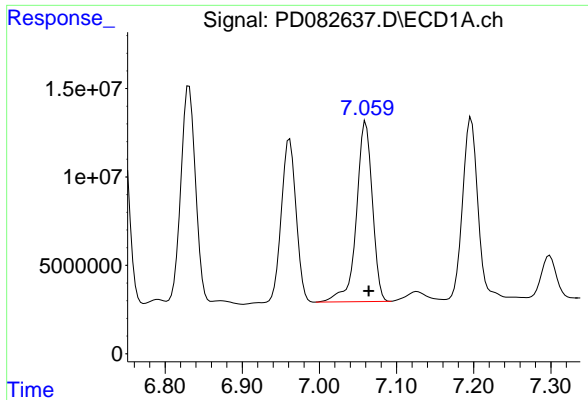
#16 4,4'-DDD

R.T.: 6.745 min  
Delta R.T.: -0.003 min  
Response: 146937808  
Conc: 96.20 ng/ml

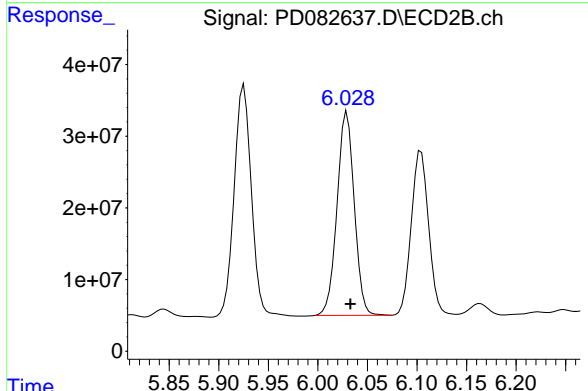


#16 4,4'-DDD

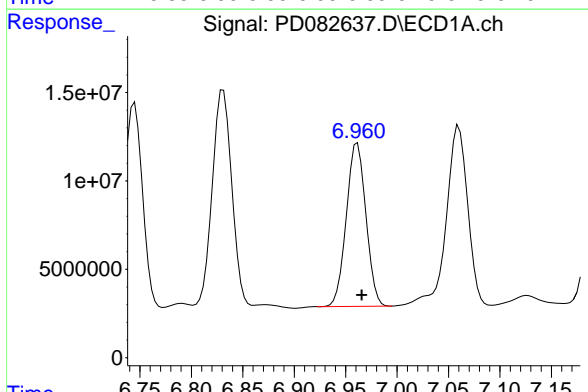
R.T.: 5.779 min  
Delta R.T.: -0.002 min  
Response: 343107126  
Conc: 96.37 ng/ml



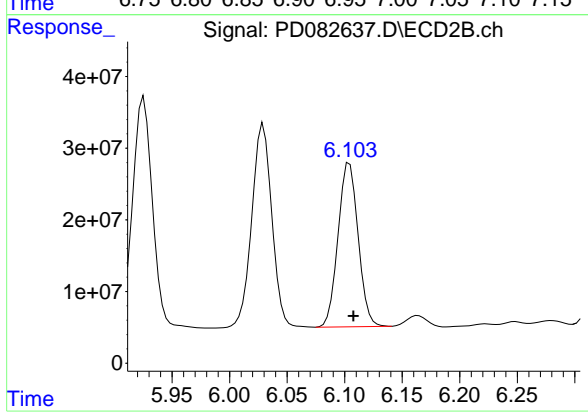
#17 4,4'-DDT  
R.T.: 7.060 min  
Delta R.T.: -0.004 min  
Response: 146657000  
Conc: 91.17 ng/ml



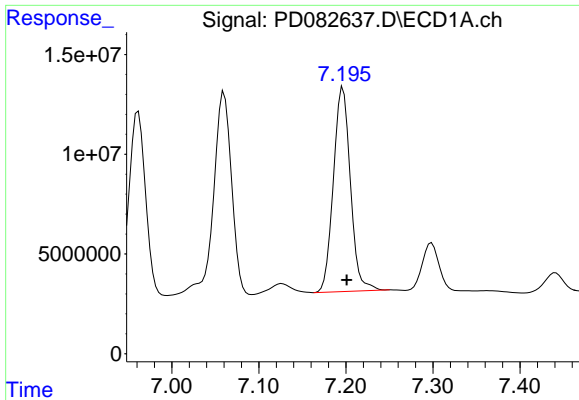
#17 4,4'-DDT  
R.T.: 6.029 min  
Delta R.T.: -0.003 min  
Response: 343428274  
Conc: 91.36 ng/ml



#18 Endrin aldehyde  
R.T.: 6.961 min  
Delta R.T.: -0.004 min  
Response: 122437622  
Conc: 84.00 ng/ml

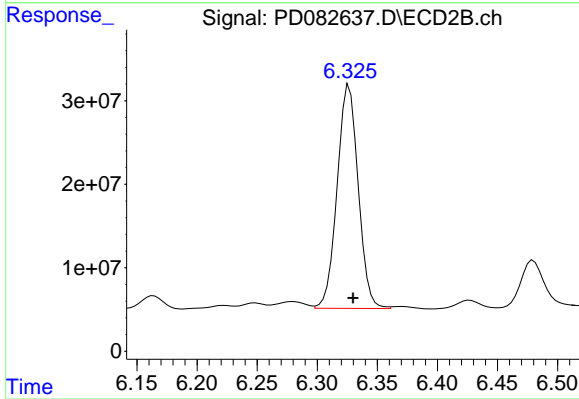


#18 Endrin aldehyde  
R.T.: 6.104 min  
Delta R.T.: -0.003 min  
Response: 278256654  
Conc: 84.58 ng/ml



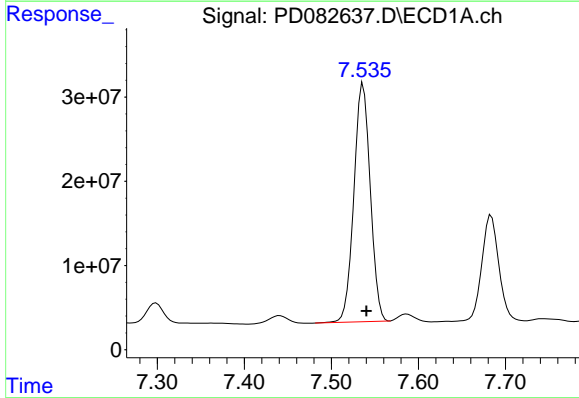
#19 Endosulfan Sulfate

R.T.: 7.197 min  
Delta R.T.: -0.004 min  
Response: 139538583  
Conc: 82.35 ng/ml



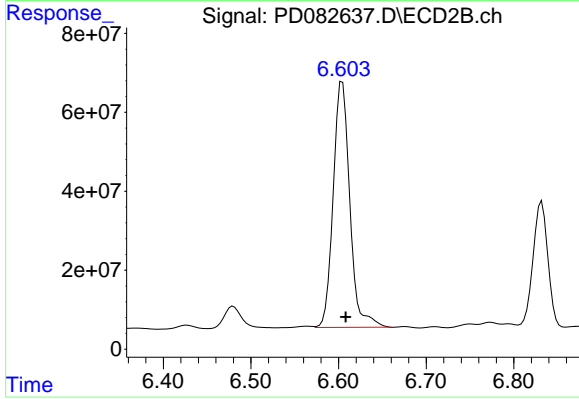
#19 Endosulfan Sulfate

R.T.: 6.327 min  
Delta R.T.: -0.003 min  
Response: 327243564  
Conc: 85.17 ng/ml



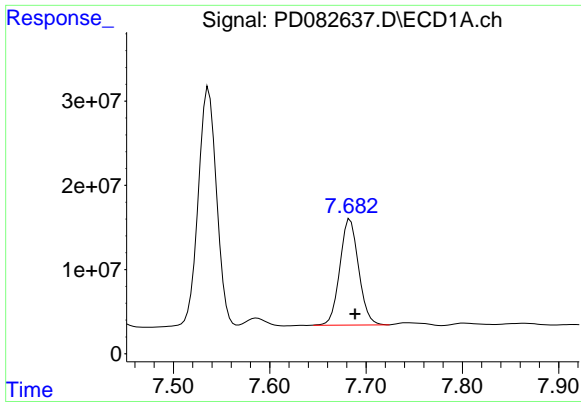
#20 Methoxychlor

R.T.: 7.537 min  
Delta R.T.: -0.004 min  
Response: 371320598  
Conc: 436.68 ng/ml



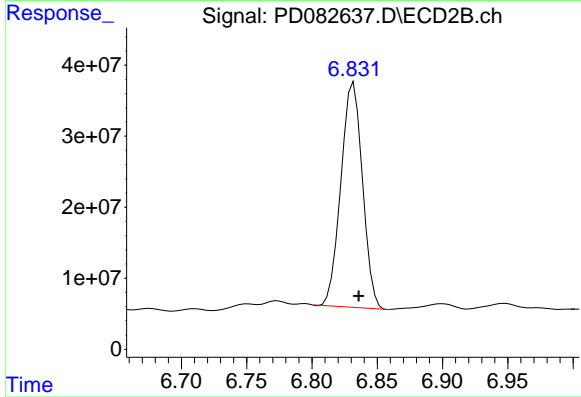
#20 Methoxychlor

R.T.: 6.604 min  
Delta R.T.: -0.004 min  
Response: 820738949  
Conc: 435.33 ng/ml



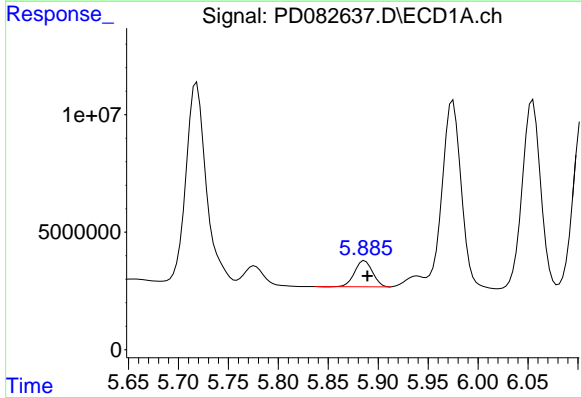
#21 Endrin ketone

R.T.: 7.684 min  
 Delta R.T.: -0.005 min  
 Response: 169510740  
 Conc: 93.64 ng/ml



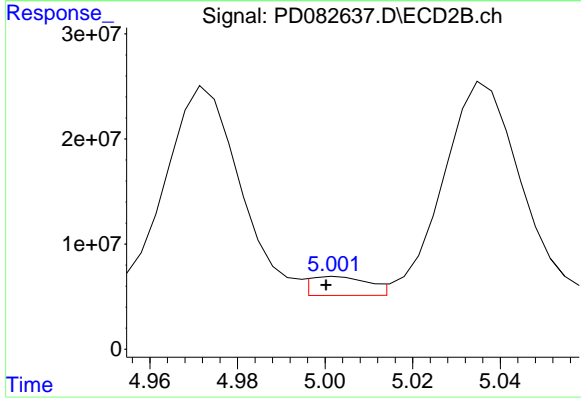
#21 Endrin ketone

R.T.: 6.832 min  
 Delta R.T.: -0.004 min  
 Response: 364061759  
 Conc: 84.93 ng/ml



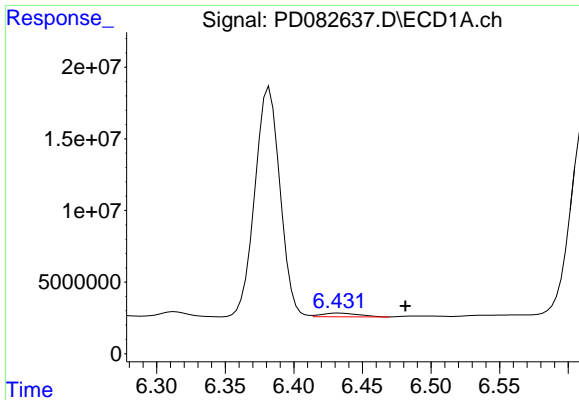
#22 Toxaphene-1

R.T.: 5.887 min  
 Delta R.T.: -0.003 min  
 Response: 13881550  
 Conc: 2151.14 ng/ml



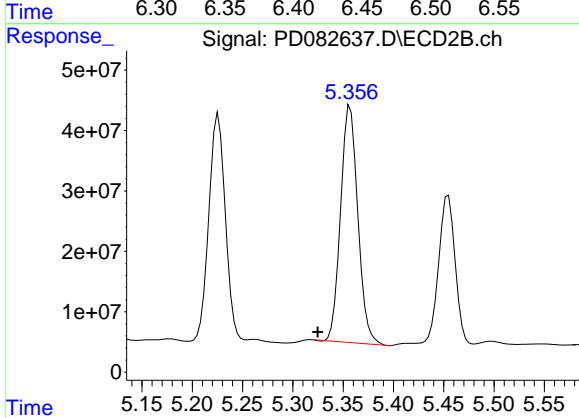
#22 Toxaphene-1

R.T.: 5.003 min  
 Delta R.T.: 0.003 min  
 Response: 16613674  
 Conc: 677.30 ng/ml



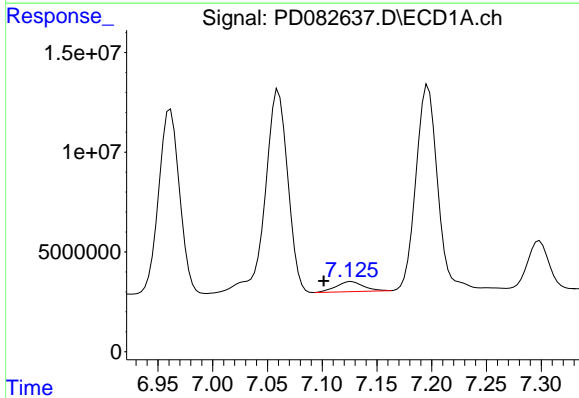
#23 Toxaphene-2

R.T.: 6.433 min  
Delta R.T.: -0.049 min  
Response: 4829367  
Conc: 260.82 ng/ml



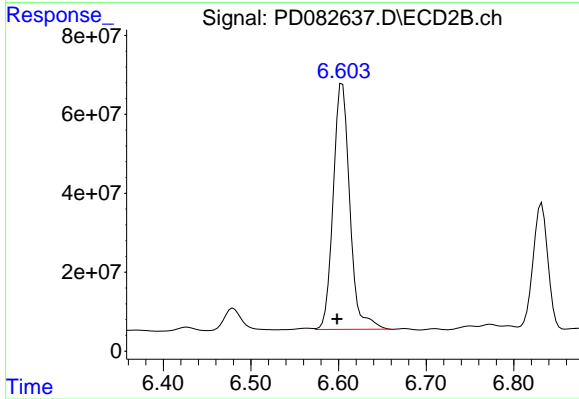
#23 Toxaphene-2

R.T.: 5.357 min  
Delta R.T.: 0.032 min  
Response: 467709772  
Conc: 18400.34 ng/ml



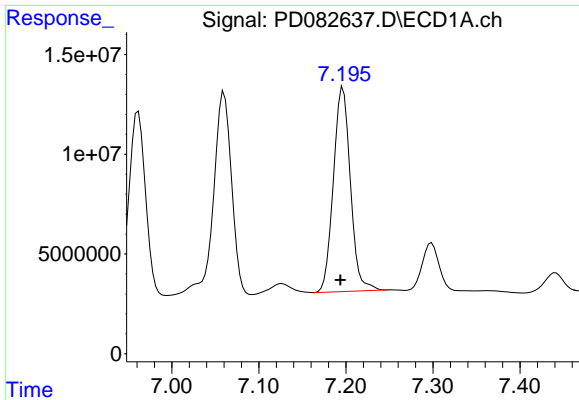
#24 Toxaphene-3

R.T.: 7.127 min  
Delta R.T.: 0.025 min  
Response: 8626748  
Conc: 168.10 ng/ml

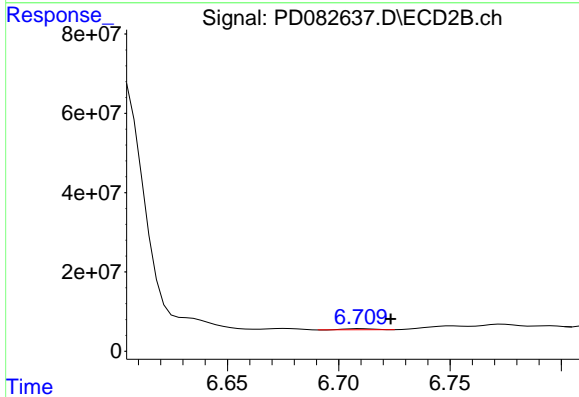


#24 Toxaphene-3

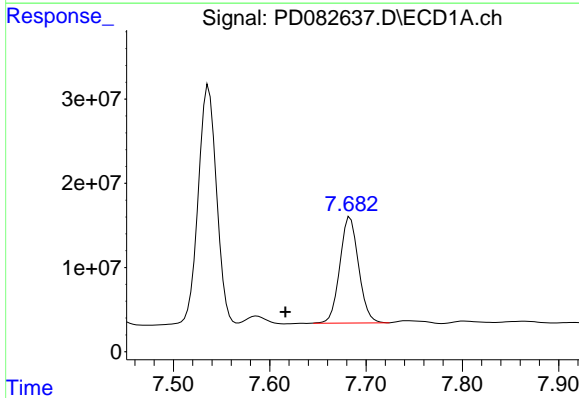
R.T.: 6.604 min  
Delta R.T.: 0.006 min  
Response: 820738949  
Conc: 9099.14 ng/ml



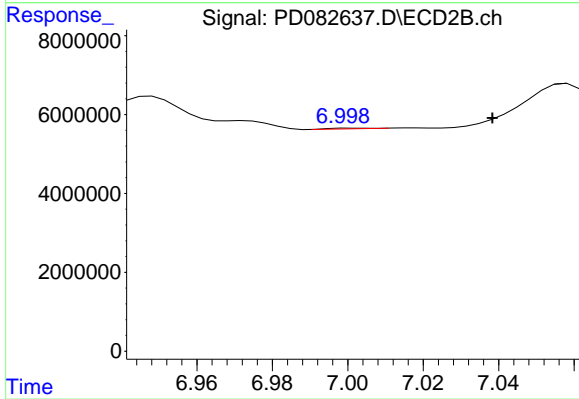
#25 Toxaphene-4  
 R.T.: 7.197 min  
 Delta R.T.: 0.003 min  
 Response: 139538583  
 Conc: 3610.64 ng/ml



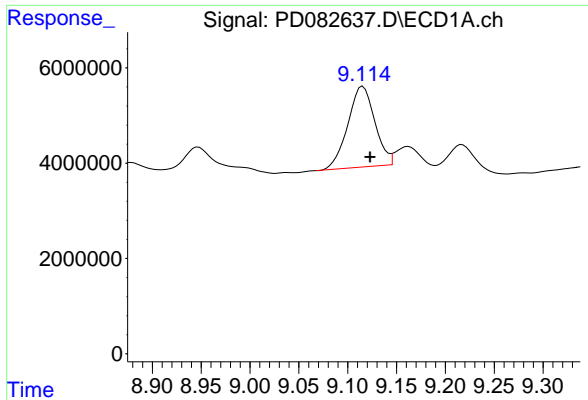
#25 Toxaphene-4  
 R.T.: 6.710 min  
 Delta R.T.: -0.013 min  
 Response: 2440388  
 Conc: 20.05 ng/ml



#26 Toxaphene-5  
 R.T.: 7.684 min  
 Delta R.T.: 0.067 min  
 Response: 169510740  
 Conc: 5867.75 ng/ml

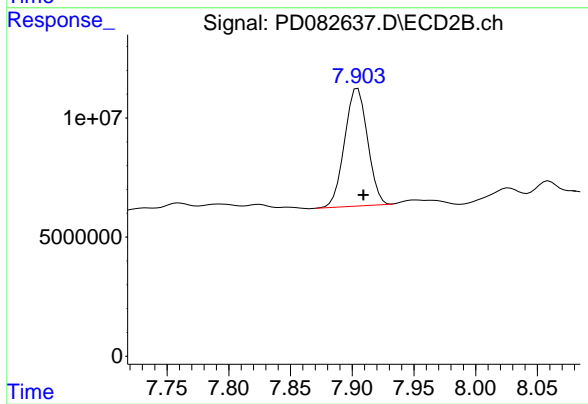


#26 Toxaphene-5  
 R.T.: 7.001 min  
 Delta R.T.: -0.038 min  
 Response: 83117  
 Conc: 1.76 ng/ml



#27 Decachlorobiphenyl

R.T.: 9.116 min  
Delta R.T.: -0.007 min  
Response: 32553897  
Conc: 16.71 ng/ml



#27 Decachlorobiphenyl

R.T.: 7.905 min  
Delta R.T.: -0.005 min  
Response: 63825720  
Conc: 16.91 ng/ml