

Data Path : Z:\pestpcbsrv\HPCHEM1\ECD_D\Data\PD042822\
 Data File : PD069288.D
 Signal(s) : Signal #1: ECD1A.ch Signal #2: ECD2B.ch
 Acq On : 28 Apr 2022 12:13
 Operator : AR\AJ
 Sample : PB144419BS
 Misc :
 ALS Vial : 8 Sample Multiplier: 1

Instrument :
 ECD_D
 ClientSampleId :

Integration File signal 1: autoint1.e
 Integration File signal 2: autoint2.e
 Quant Time: Apr 29 01:13:02 2022
 Quant Method : Z:\pestpcbsrv\HPCHEM1\ECD_D\Method\PD041422CLP.M
 Quant Title : GC Extractables
 QLast Update : Thu Apr 21 02:24:30 2022
 Response via : Initial Calibration
 Integrator: ChemStation

Volume Inj. : 1 µl
 Signal #1 Phase : ZB-MR2 Signal #2 Phase: ZB-MR1
 Signal #1 Info : 30M x 0.32mm x0.2 Signal #2 Info : 30M x 0.32mm x 0.50µm

Compound	RT#1	RT#2	Resp#1	Resp#2	ng/ml	ng/ml

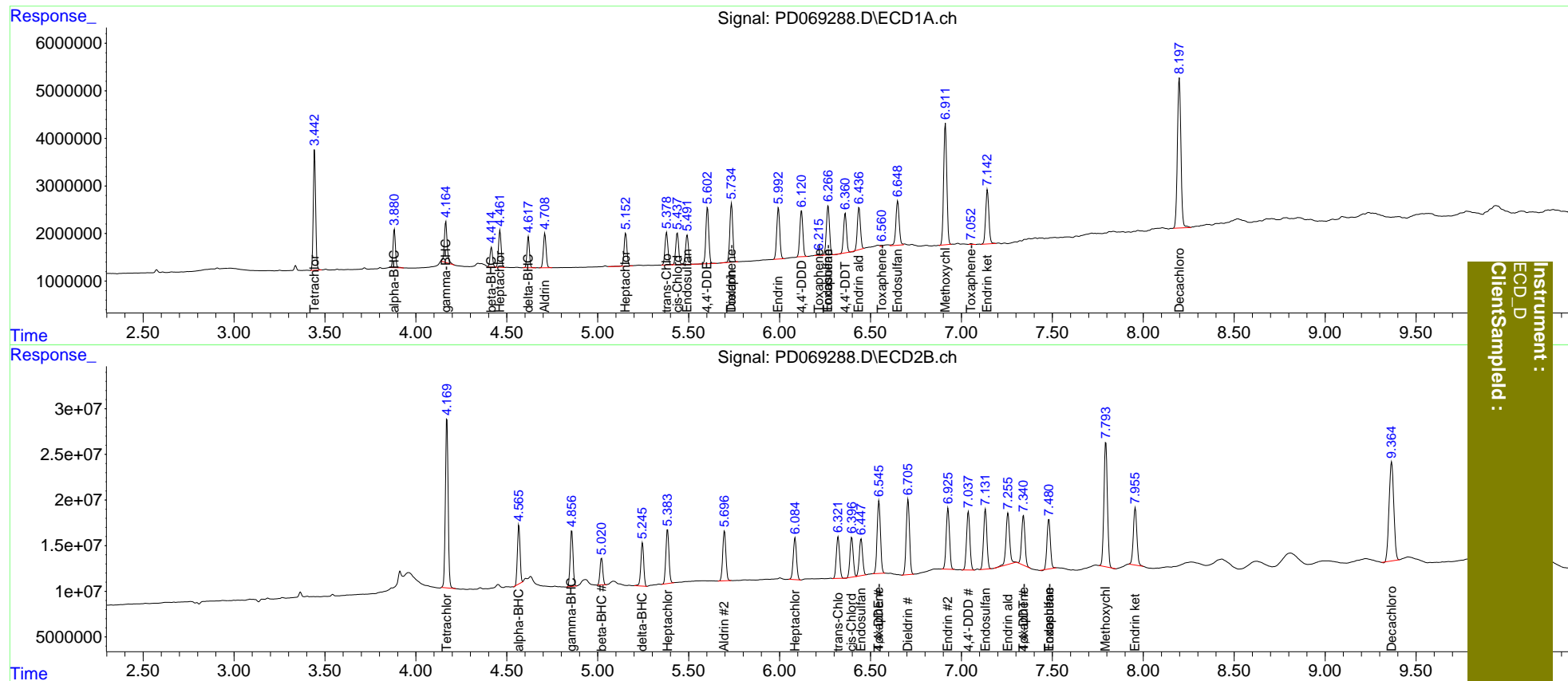
System Monitoring Compounds						
1) SA Tetrachlo...	3.443	4.171	22508631	196.5E6	17.766	16.281
2) SA Decachlor...	8.198	9.366	42709251	196.3E6	32.117	27.910
Target Compounds						
2) A alpha-BHC	3.882	4.567	7499762	64539240	4.196	3.926
3) MA gamma-BHC...	4.165	4.858	9243696	66443262	5.110	4.265
4) MA Heptachlor	4.463	5.384	7895647	70261603	4.650	4.641
5) MB Aldrin	4.710	5.697	7589958	66221413	4.765	4.639
6) B beta-BHC	4.416	5.021	3986712	31087805	5.147	4.634
7) B delta-BHC	4.619	5.246	6173081	52278902	3.867	4.453
8) B Heptachlo...	5.154	6.085	7726600	57627098	5.249	5.172
9) A Endosulfan I	5.492	6.449	6887489	51173888	4.720	4.308
10) B trans-Chl...	5.379	6.322	7611370	56875257	5.077	4.483
11) B cis-Chlor...	5.438	6.397	7496198	54262402	5.022	4.357
12) B 4,4'-DDE	5.604	6.547	13148837	101.5E6	9.803	9.333
13) MA Dieldrin	5.736	6.707	14255336	104.2E6	9.159	8.642
14) MA Endrin	5.994	6.927	12667890	84508261	9.054	8.690
15) B Endosulfa...	6.267	7.132	12419473	82999154	9.638	8.660
16) A 4,4'-DDD	6.121	7.038	11280024	81810201	9.252	8.737
17) MA 4,4'-DDT	6.361	7.341	9434227	69447535	7.691	7.715
18) B Endrin al...	6.437	7.256	10393772	79332720	10.471	11.104
19) B Endosulfa...	6.650	7.481	11798880	70800740	9.416	8.069
20) A Methoxychlor	6.912	7.794	30934939	182.3E6	45.582	44.241
21) B Endrin ke...	7.143	7.956	13921534	85464454	9.636	9.257
22) Toxaphene-1	5.736f	6.547f	14255336	101.5E6	1518.080	2152.438 #
23) Toxaphene-2	6.217	0.000	345327	0	34.662	N.D. #
24) Toxaphene-3	6.267f	7.341f	12419473	69447535	524.014	286.136 #
25) Toxaphene-4	6.561	7.481	159951	70800740	6.344	483.560 #
26) Toxaphene-5	7.053	0.000	171156	0	6.311	N.D. #

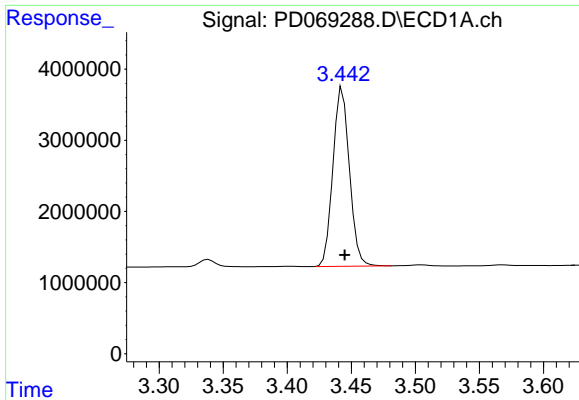
(f)=RT Delta > 1/2 Window (#)=Amounts differ by > 25% (m)=manual int.

Data Path : Z:\pestpcbsrv\HPCHEM1\ECD_D\Data\PD042822\
 Data File : PD069288.D
 Signal(s) : Signal #1: ECD1A.ch Signal #2: ECD2B.ch
 Acq On : 28 Apr 2022 12:13
 Operator : AR\AJ
 Sample : PB144419BS
 Misc :
 ALS Vial : 8 Sample Multiplier: 1

Integration File signal 1: autoint1.e
 Integration File signal 2: autoint2.e
 Quant Time: Apr 29 01:13:02 2022
 Quant Method : Z:\pestpcbsrv\HPCHEM1\ECD_D\Method\PD041422CLP.M
 Quant Title : GC Extractables
 QLast Update : Thu Apr 21 02:24:30 2022
 Response via : Initial Calibration
 Integrator: ChemStation

Volume Inj. : 1 µl
 Signal #1 Phase : ZB-MR2 Signal #2 Phase: ZB-MR1
 Signal #1 Info : 30M x 0.32mm x0.2 Signal #2 Info : 30M x 0.32mm x 0.50µm

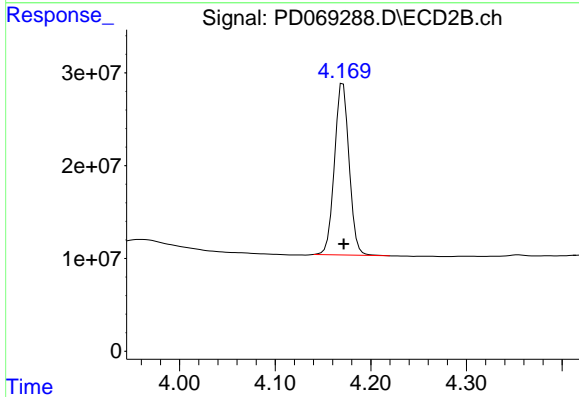




#1 Tetrachloro-m-xylene

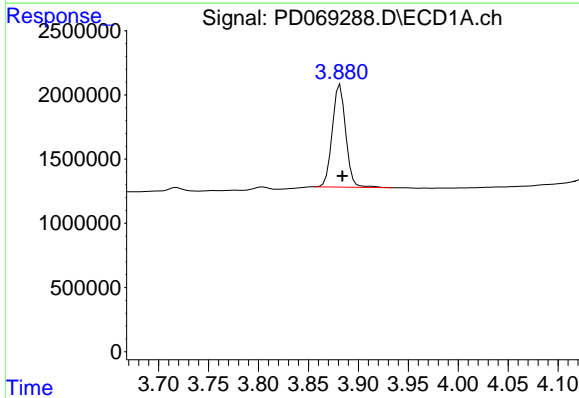
R.T.: 3.443 min
 Delta R.T.: -0.002 min
 Response: 22508631
 Conc: 17.77 ng/ml

Instrument :
 ECD_D
 ClientSampleId :



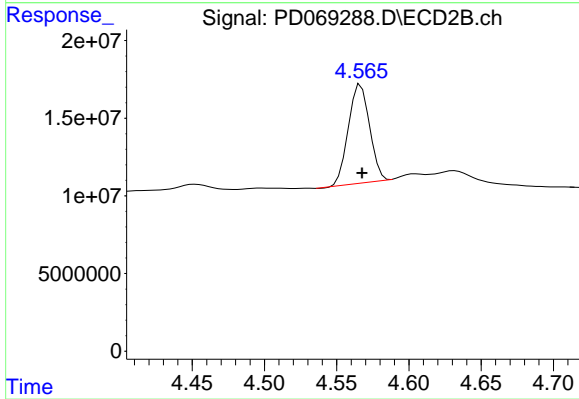
#1 Tetrachloro-m-xylene

R.T.: 4.171 min
 Delta R.T.: 0.000 min
 Response: 196500257
 Conc: 16.28 ng/ml



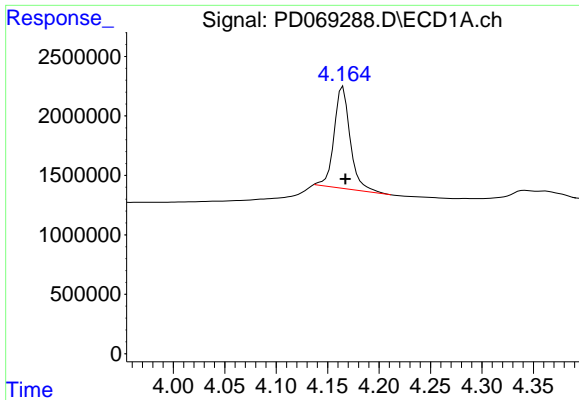
#2 alpha-BHC

R.T.: 3.882 min
 Delta R.T.: -0.002 min
 Response: 7499762
 Conc: 4.20 ng/ml



#2 alpha-BHC

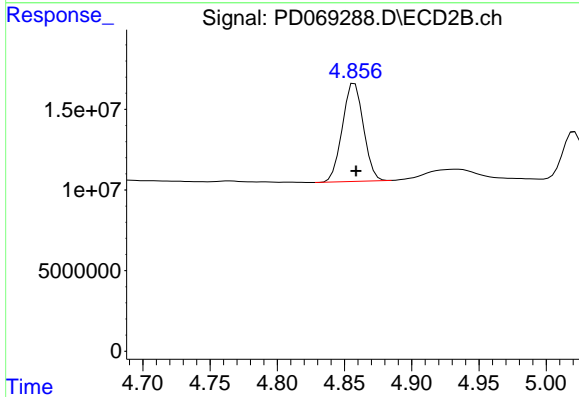
R.T.: 4.567 min
 Delta R.T.: 0.000 min
 Response: 64539240
 Conc: 3.93 ng/ml



#3 gamma-BHC (Lindane)

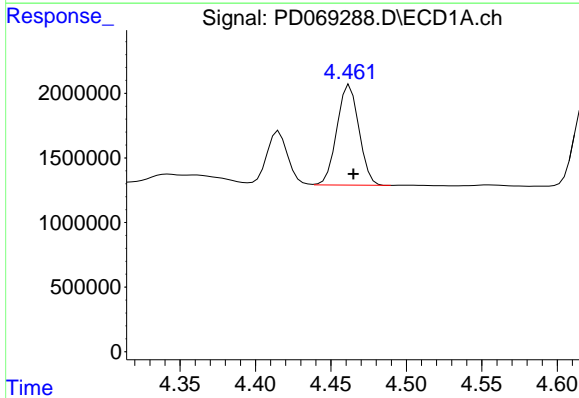
R.T.: 4.165 min
 Delta R.T.: -0.002 min
 Response: 9243696
 Conc: 5.11 ng/ml

Instrument :
 ECD_D
 ClientSampleId :



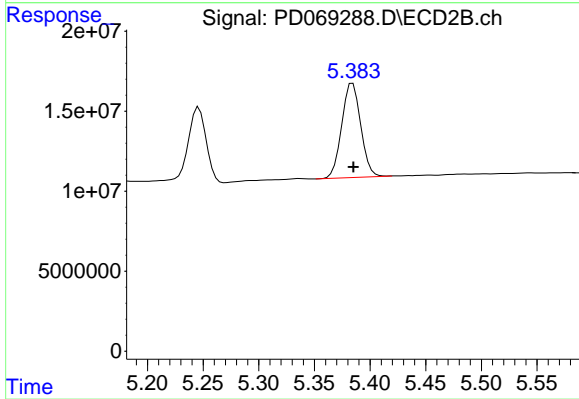
#3 gamma-BHC (Lindane)

R.T.: 4.858 min
 Delta R.T.: 0.000 min
 Response: 66443262
 Conc: 4.26 ng/ml



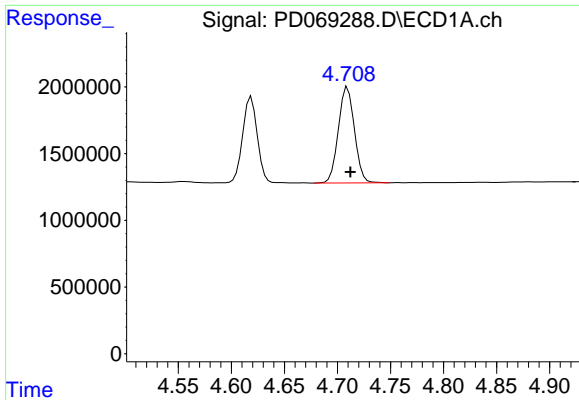
#4 Heptachlor

R.T.: 4.463 min
 Delta R.T.: -0.002 min
 Response: 7895647
 Conc: 4.65 ng/ml



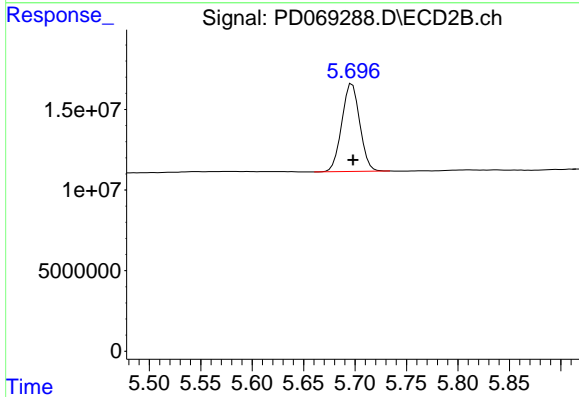
#4 Heptachlor

R.T.: 5.384 min
 Delta R.T.: 0.000 min
 Response: 70261603
 Conc: 4.64 ng/ml

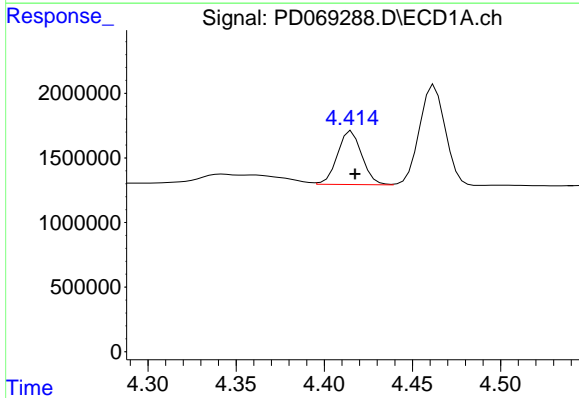


#5 Aldrin
 R.T.: 4.710 min
 Delta R.T.: -0.003 min
 Response: 7589958
 Conc: 4.76 ng/ml

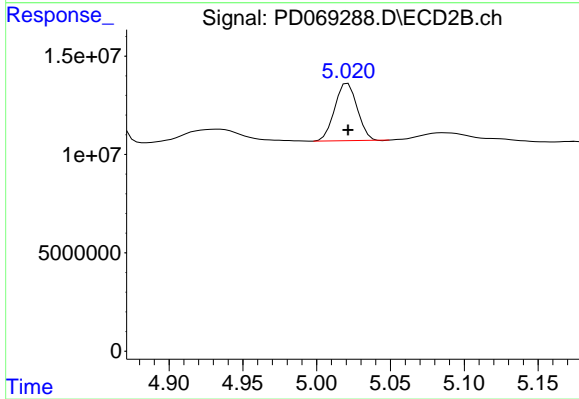
Instrument :
 ECD_D
 ClientSampleId :



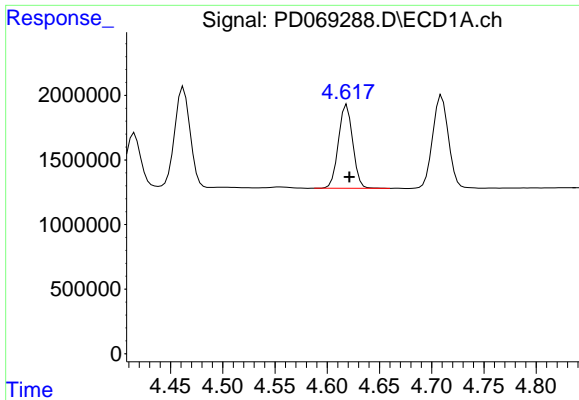
#5 Aldrin
 R.T.: 5.697 min
 Delta R.T.: -0.001 min
 Response: 66221413
 Conc: 4.64 ng/ml



#6 beta-BHC
 R.T.: 4.416 min
 Delta R.T.: -0.002 min
 Response: 3986712
 Conc: 5.15 ng/ml



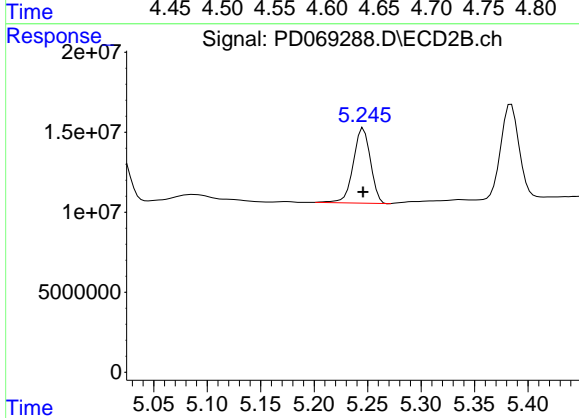
#6 beta-BHC
 R.T.: 5.021 min
 Delta R.T.: 0.000 min
 Response: 31087805
 Conc: 4.63 ng/ml



#7 delta-BHC

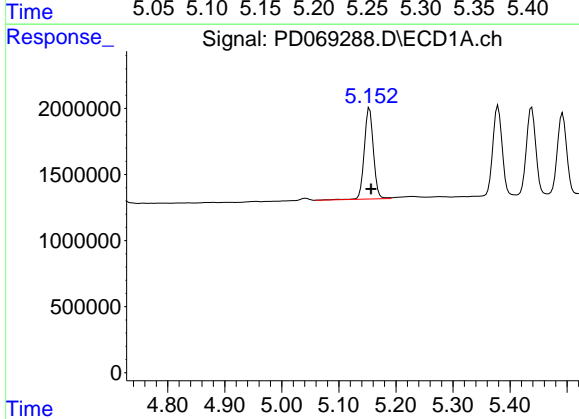
R.T.: 4.619 min
 Delta R.T.: -0.002 min
 Response: 6173081
 Conc: 3.87 ng/ml

Instrument :
 ECD_D
 ClientSampleId :



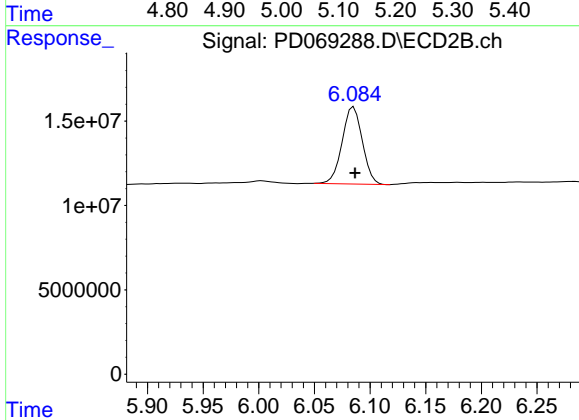
#7 delta-BHC

R.T.: 5.246 min
 Delta R.T.: 0.000 min
 Response: 52278902
 Conc: 4.45 ng/ml



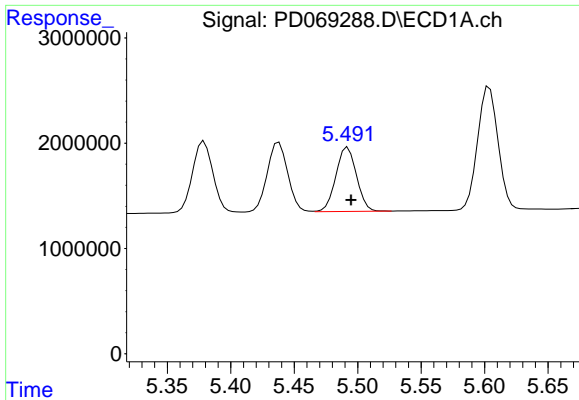
#8 Heptachlor epoxide

R.T.: 5.154 min
 Delta R.T.: -0.003 min
 Response: 7726600
 Conc: 5.25 ng/ml



#8 Heptachlor epoxide

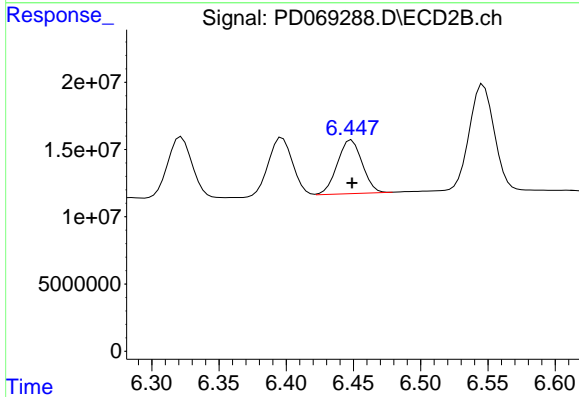
R.T.: 6.085 min
 Delta R.T.: -0.001 min
 Response: 57627098
 Conc: 5.17 ng/ml



#9 Endosulfan I

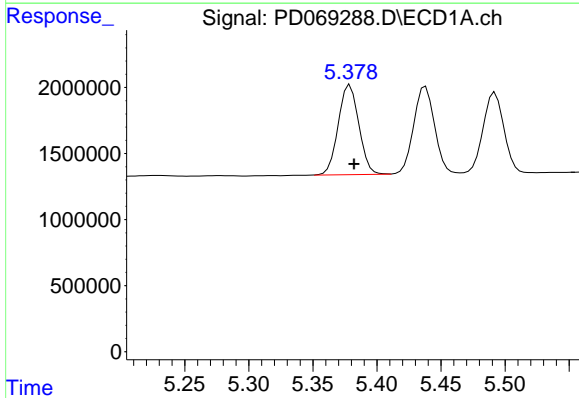
R.T.: 5.492 min
 Delta R.T.: -0.002 min
 Response: 6887489
 Conc: 4.72 ng/ml

Instrument :
 ECD_D
 ClientSampleId :



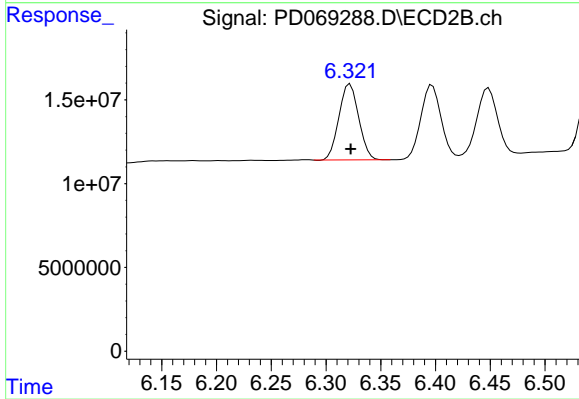
#9 Endosulfan I

R.T.: 6.449 min
 Delta R.T.: 0.000 min
 Response: 51173888
 Conc: 4.31 ng/ml



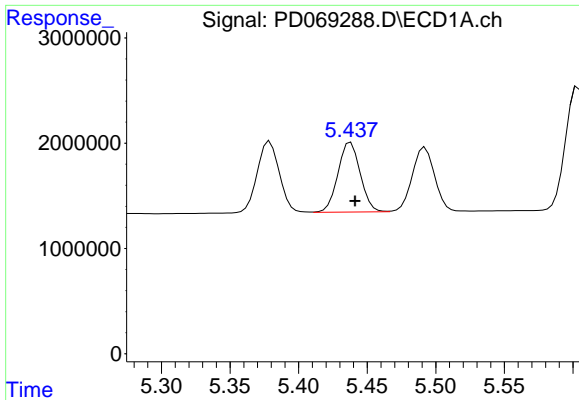
#10 trans-Chlordane

R.T.: 5.379 min
 Delta R.T.: -0.003 min
 Response: 7611370
 Conc: 5.08 ng/ml



#10 trans-Chlordane

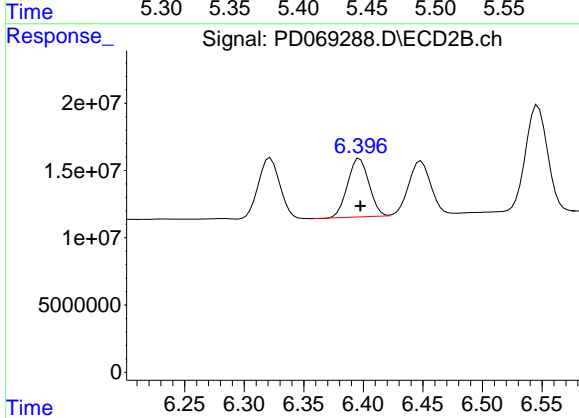
R.T.: 6.322 min
 Delta R.T.: 0.000 min
 Response: 56875257
 Conc: 4.48 ng/ml



#11 cis-Chlordane

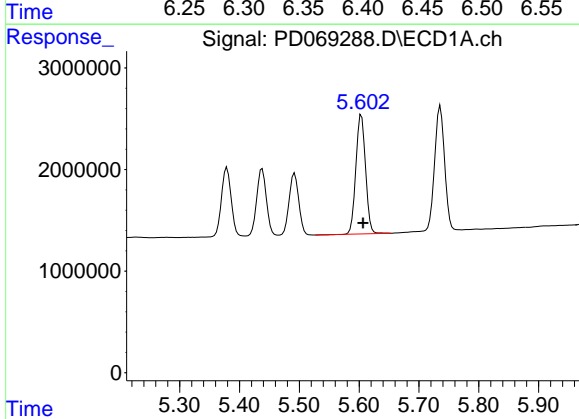
R.T.: 5.438 min
 Delta R.T.: -0.003 min
 Response: 7496198
 Conc: 5.02 ng/ml

Instrument :
 ECD_D
 ClientSampleId :



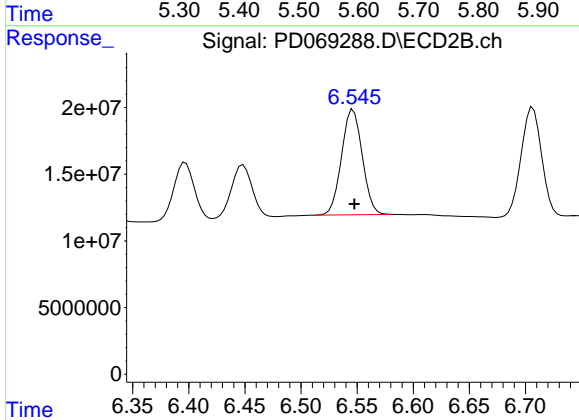
#11 cis-Chlordane

R.T.: 6.397 min
 Delta R.T.: 0.000 min
 Response: 54262402
 Conc: 4.36 ng/ml



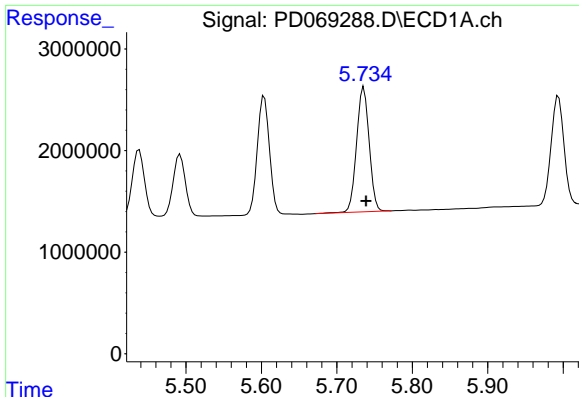
#12 4,4'-DDE

R.T.: 5.604 min
 Delta R.T.: -0.003 min
 Response: 13148837
 Conc: 9.80 ng/ml



#12 4,4'-DDE

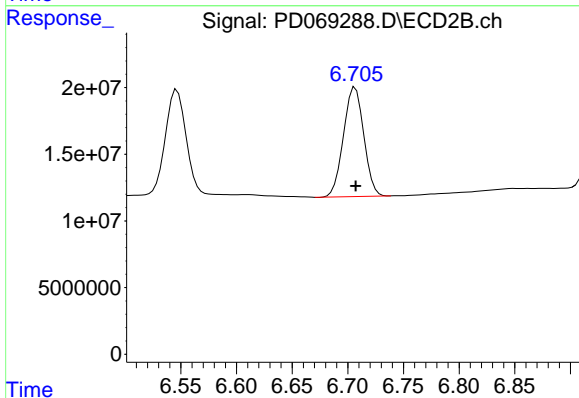
R.T.: 6.547 min
 Delta R.T.: 0.000 min
 Response: 101534705
 Conc: 9.33 ng/ml



#13 Dieldrin

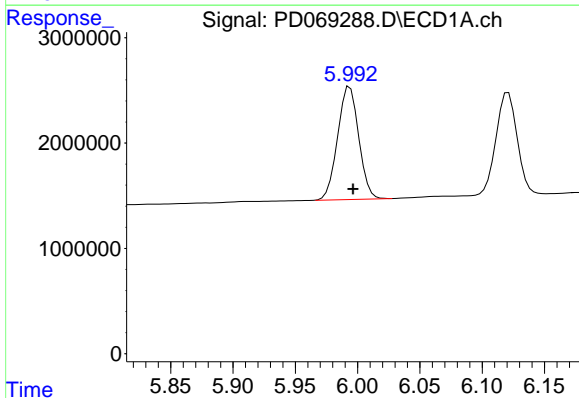
R.T.: 5.736 min
 Delta R.T.: -0.003 min
 Response: 14255336
 Conc: 9.16 ng/ml

Instrument :
 ECD_D
 ClientSampleId :



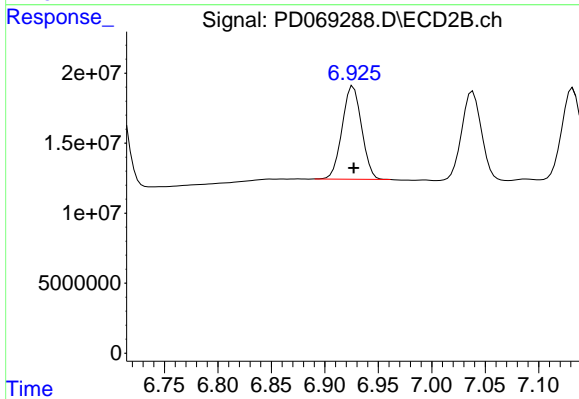
#13 Dieldrin

R.T.: 6.707 min
 Delta R.T.: 0.000 min
 Response: 104234190
 Conc: 8.64 ng/ml



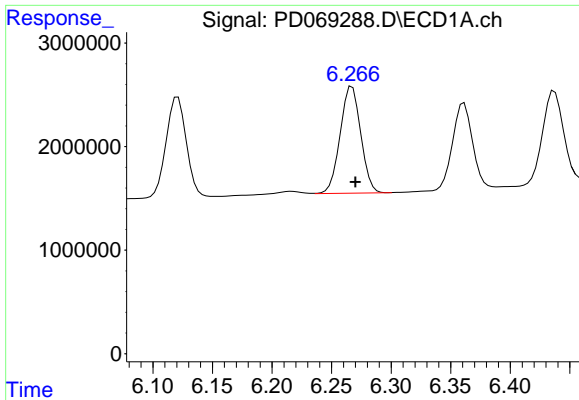
#14 Endrin

R.T.: 5.994 min
 Delta R.T.: -0.003 min
 Response: 12667890
 Conc: 9.05 ng/ml



#14 Endrin

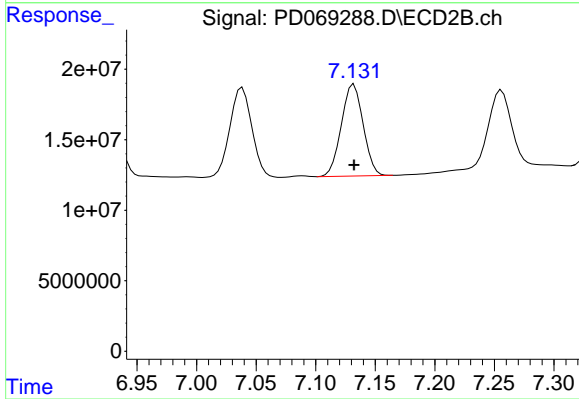
R.T.: 6.927 min
 Delta R.T.: 0.000 min
 Response: 84508261
 Conc: 8.69 ng/ml



#15 Endosulfan II

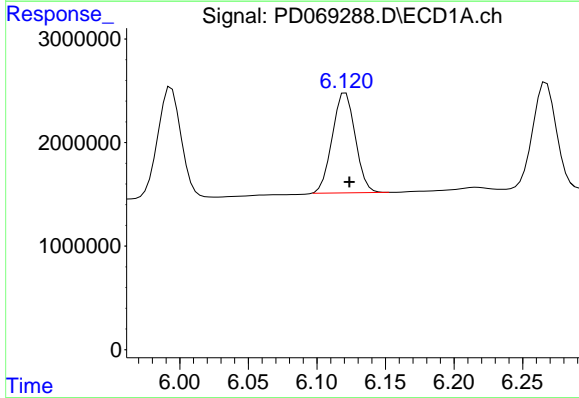
R.T.: 6.267 min
 Delta R.T.: -0.003 min
 Response: 12419473
 Conc: 9.64 ng/ml

Instrument :
 ECD_D
 ClientSampleId :



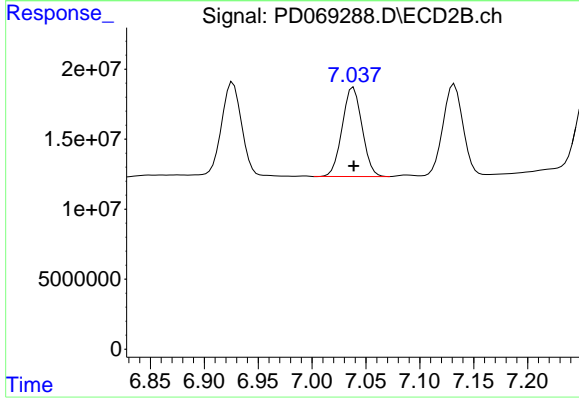
#15 Endosulfan II

R.T.: 7.132 min
 Delta R.T.: 0.000 min
 Response: 82999154
 Conc: 8.66 ng/ml



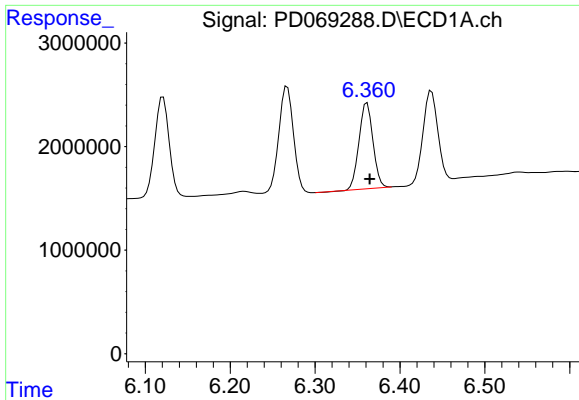
#16 4,4'-DDD

R.T.: 6.121 min
 Delta R.T.: -0.003 min
 Response: 11280024
 Conc: 9.25 ng/ml



#16 4,4'-DDD

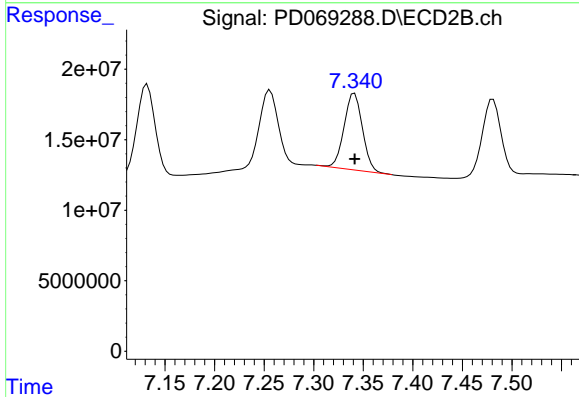
R.T.: 7.038 min
 Delta R.T.: 0.000 min
 Response: 81810201
 Conc: 8.74 ng/ml



#17 4,4'-DDT

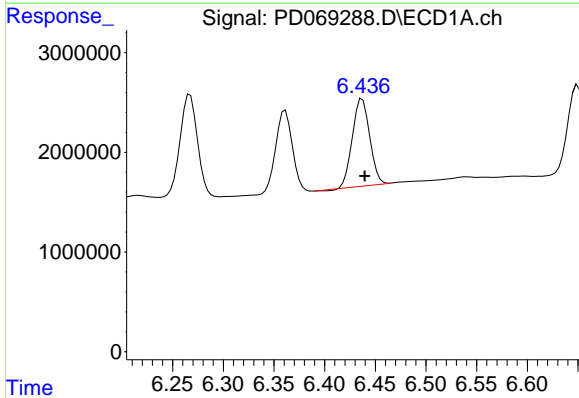
R.T.: 6.361 min
 Delta R.T.: -0.003 min
 Response: 9434227
 Conc: 7.69 ng/ml

Instrument :
 ECD_D
 ClientSampleId :



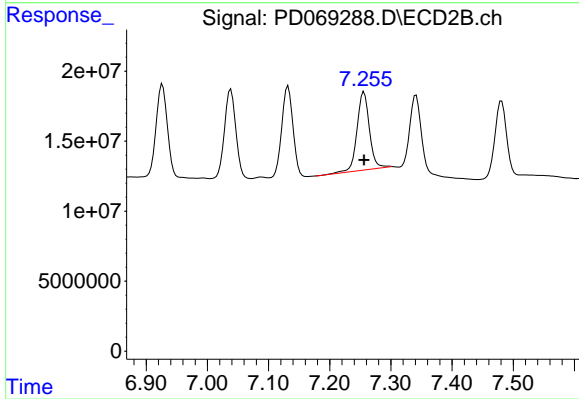
#17 4,4'-DDT

R.T.: 7.341 min
 Delta R.T.: 0.000 min
 Response: 69447535
 Conc: 7.71 ng/ml



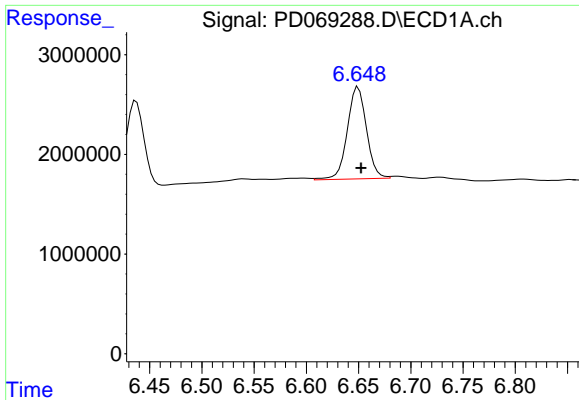
#18 Endrin aldehyde

R.T.: 6.437 min
 Delta R.T.: -0.003 min
 Response: 10393772
 Conc: 10.47 ng/ml



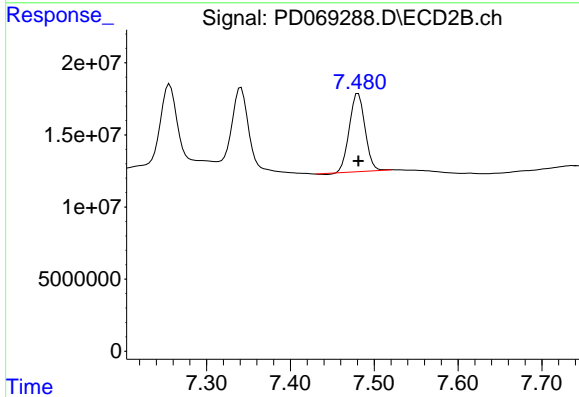
#18 Endrin aldehyde

R.T.: 7.256 min
 Delta R.T.: 0.000 min
 Response: 79332720
 Conc: 11.10 ng/ml

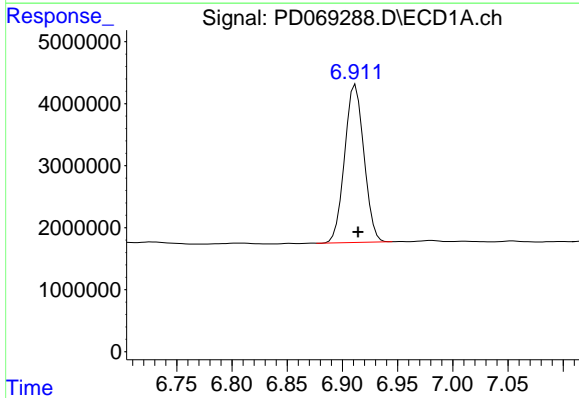


#19 Endosulfan Sulfate
 R.T.: 6.650 min
 Delta R.T.: -0.003 min
 Response: 11798880
 Conc: 9.42 ng/ml

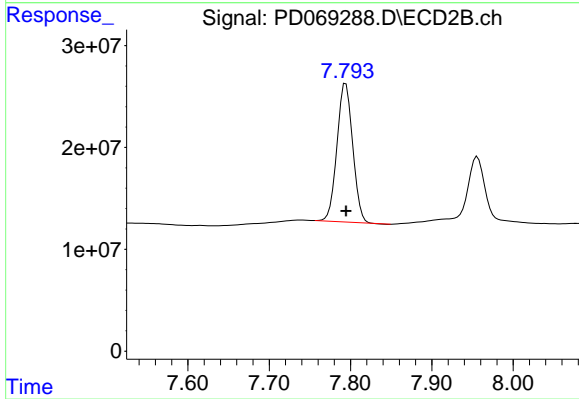
Instrument :
 ECD_D
 ClientSampleId :



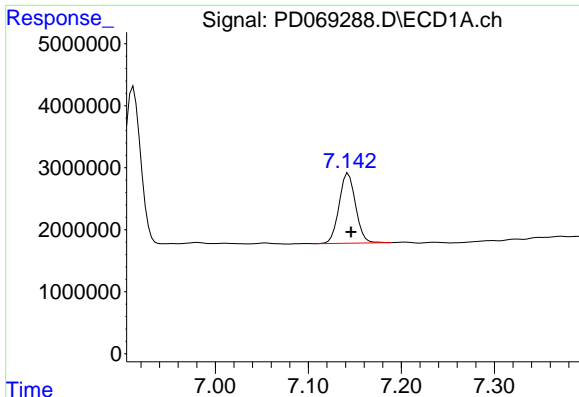
#19 Endosulfan Sulfate
 R.T.: 7.481 min
 Delta R.T.: 0.000 min
 Response: 70800740
 Conc: 8.07 ng/ml



#20 Methoxychlor
 R.T.: 6.912 min
 Delta R.T.: -0.002 min
 Response: 30934939
 Conc: 45.58 ng/ml



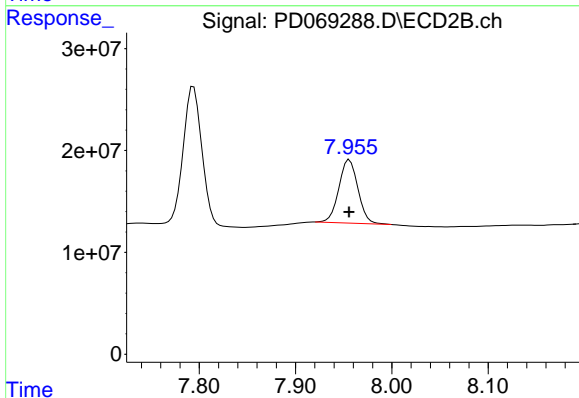
#20 Methoxychlor
 R.T.: 7.794 min
 Delta R.T.: 0.000 min
 Response: 182320975
 Conc: 44.24 ng/ml



#21 Endrin ketone

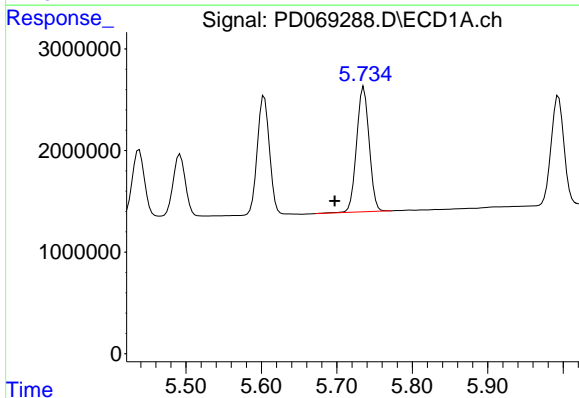
R.T.: 7.143 min
 Delta R.T.: -0.003 min
 Response: 13921534
 Conc: 9.64 ng/ml

Instrument :
 ECD_D
 ClientSampleId :



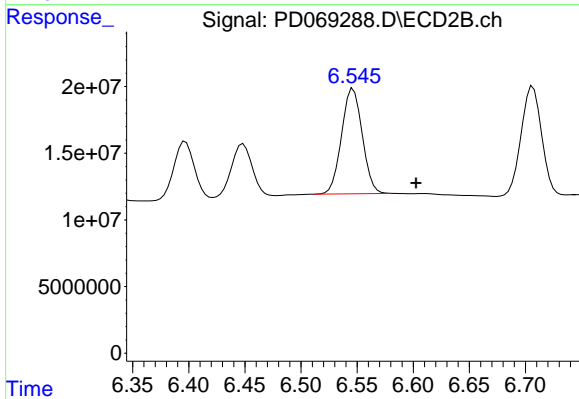
#21 Endrin ketone

R.T.: 7.956 min
 Delta R.T.: 0.000 min
 Response: 85464454
 Conc: 9.26 ng/ml



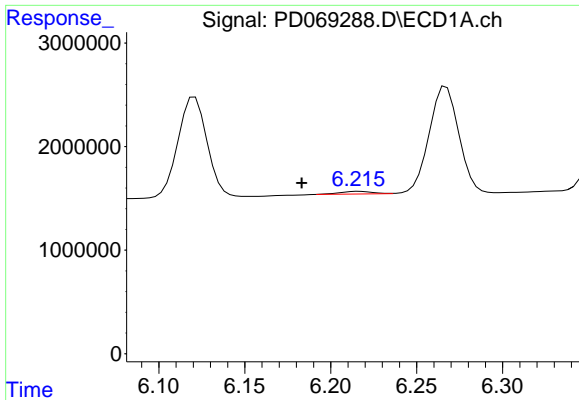
#22 Toxaphene-1

R.T.: 5.736 min
 Delta R.T.: 0.038 min
 Response: 14255336
 Conc: 1518.08 ng/ml



#22 Toxaphene-1

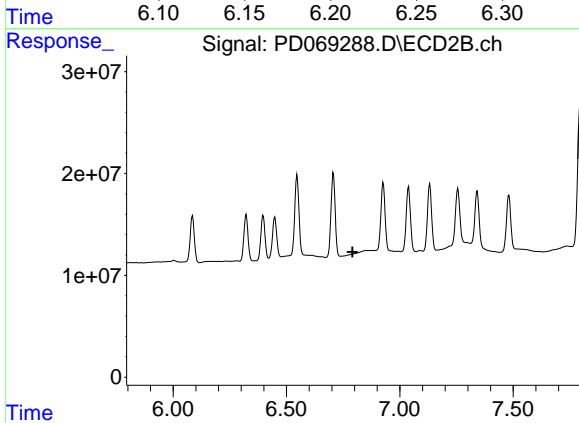
R.T.: 6.547 min
 Delta R.T.: -0.056 min
 Response: 101534705
 Conc: 2152.44 ng/ml



#23 Toxaphene-2

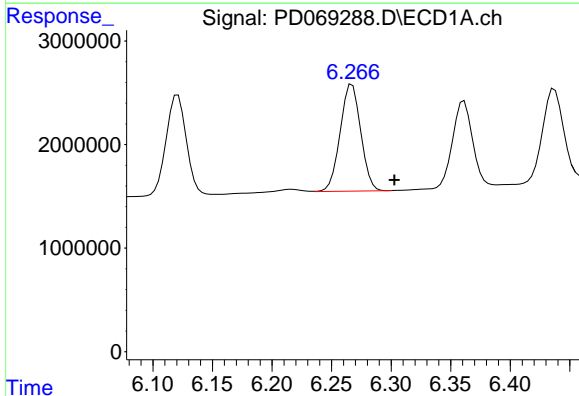
R.T.: 6.217 min
 Delta R.T.: 0.033 min
 Response: 345327
 Conc: 34.66 ng/ml

Instrument :
 ECD_D
 ClientSampleId :



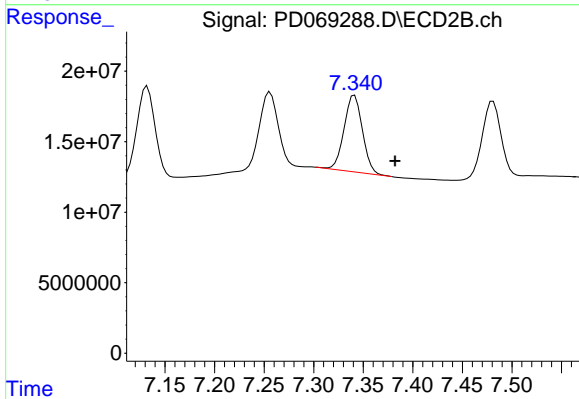
#23 Toxaphene-2

R.T.: 0.000 min
 Exp R.T. : 6.792 min
 Response: 0
 Conc: N.D.



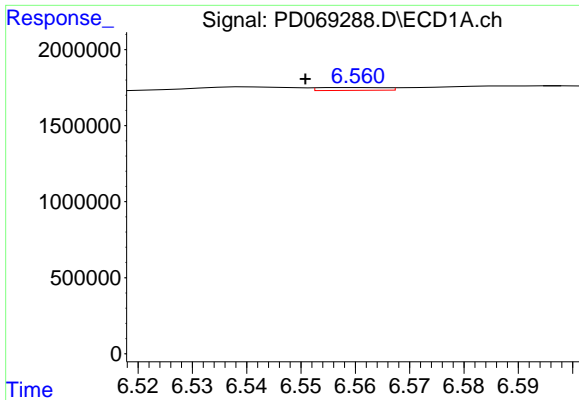
#24 Toxaphene-3

R.T.: 6.267 min
 Delta R.T.: -0.035 min
 Response: 12419473
 Conc: 524.01 ng/ml



#24 Toxaphene-3

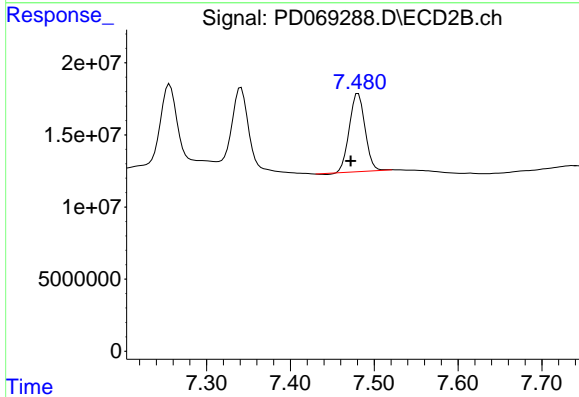
R.T.: 7.341 min
 Delta R.T.: -0.041 min
 Response: 69447535
 Conc: 286.14 ng/ml



#25 Toxaphene-4

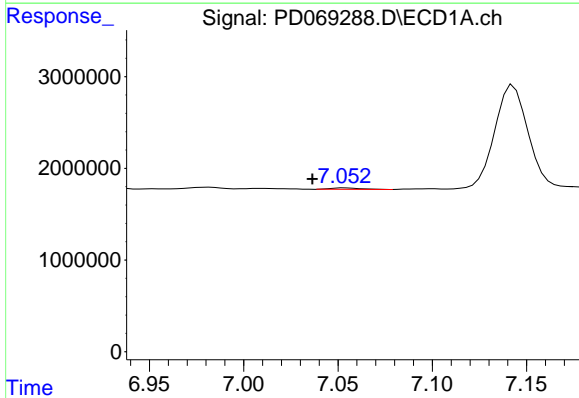
R.T.: 6.561 min
 Delta R.T.: 0.010 min
 Response: 159951
 Conc: 6.34 ng/ml

Instrument :
 ECD_D
 ClientSampleId :



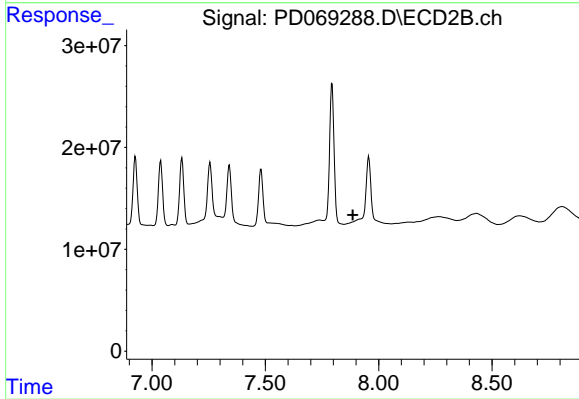
#25 Toxaphene-4

R.T.: 7.481 min
 Delta R.T.: 0.009 min
 Response: 70800740
 Conc: 483.56 ng/ml



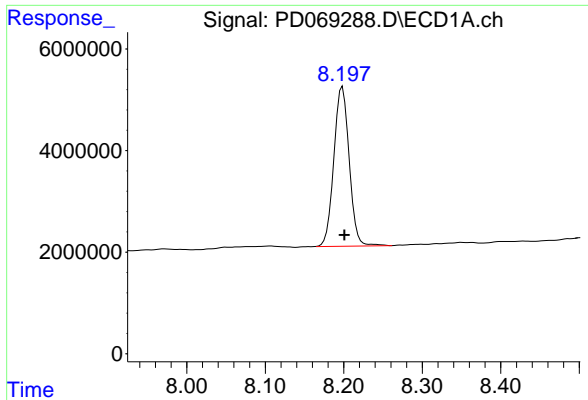
#26 Toxaphene-5

R.T.: 7.053 min
 Delta R.T.: 0.017 min
 Response: 171156
 Conc: 6.31 ng/ml



#26 Toxaphene-5

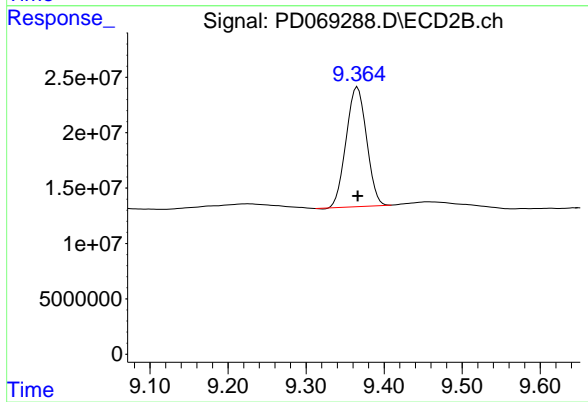
R.T.: 0.000 min
 Exp R.T. : 7.885 min
 Response: 0
 Conc: N.D.



#27 Decachlorobiphenyl

R.T.: 8.198 min
Delta R.T.: -0.002 min
Response: 42709251
Conc: 32.12 ng/ml

Instrument :
ECD_D
ClientSampleId :



#27 Decachlorobiphenyl

R.T.: 9.366 min
Delta R.T.: 0.000 min
Response: 196269711
Conc: 27.91 ng/ml