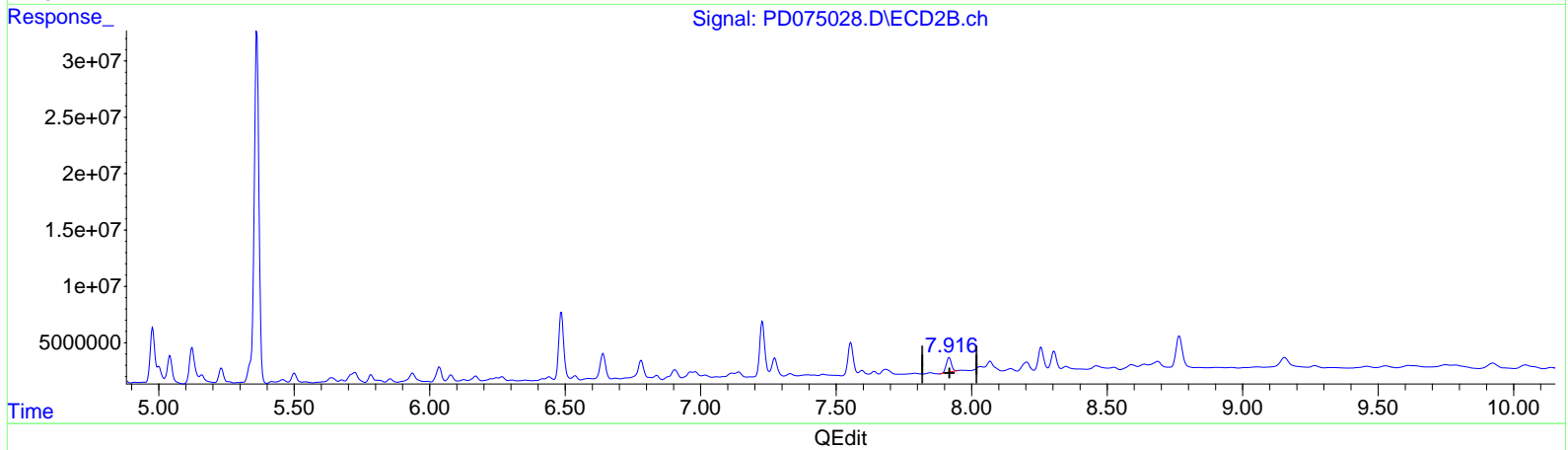
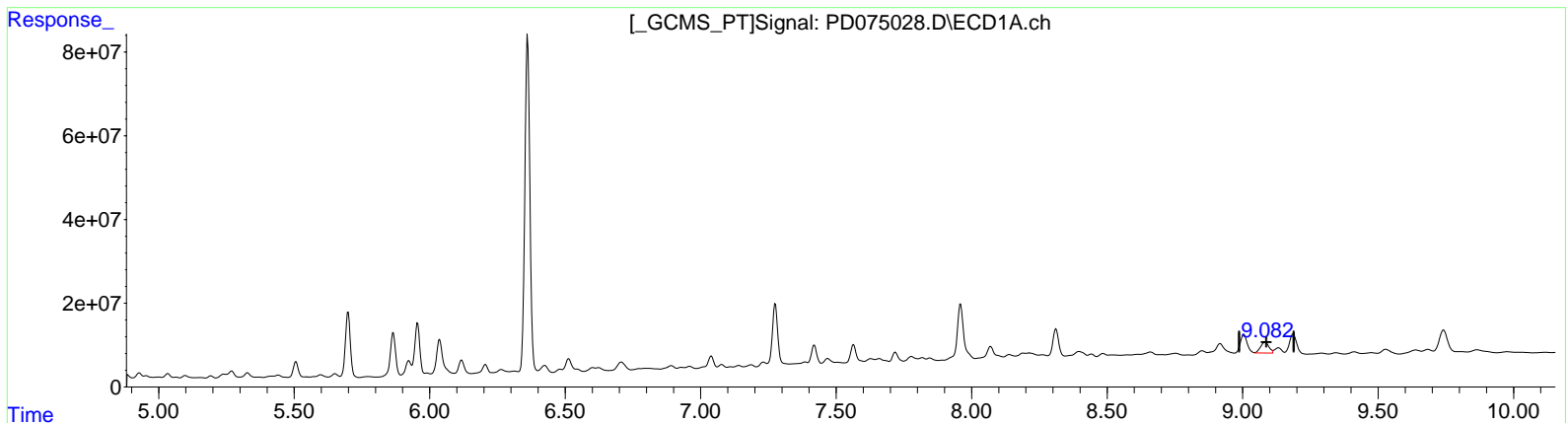


Data Path : Z:\pestpcbsrv\HPCHEM1\ECD_D\Data\PD042823\
 Data File : PD075028.D
 Signal(s) : Signal #1: ECD1A.ch Signal #2: ECD2B.ch
 Acq On : 28 Apr 2023 14:10
 Operator : AR\AJ
 Sample : 02417-05
 Misc :
 ALS Vial : 8 Sample Multiplier: 1

Integration File signal 1: autoint1.e
 Integration File signal 2: autoint2.e
 Quant Time: Apr 28 22:15:59 2023
 Quant Method : Z:\pestpcbsrv\HPCHEM1\ECD_D\Method\PD042723CLP.M
 Quant Title : GC Extractables
 QLast Update : Fri Apr 28 02:34:46 2023
 Response via : Initial Calibration
 Integrator: ChemStation

Volume Inj. : 1 µl
 Signal #1 Phase : ZB-MR1 Signal #2 Phase: ZB-MR2
 Signal #1 Info : 30M x 0.32mm x 0.5 Signal #2 Info : 30M x 0.32mm x 0.25µm



(27) Decachlorobiphenyl (SA)
 9.082min 23.244 ng/ml m
 response 55516089

(27) Decachlorobiphenyl #2 (SA)
 7.917min 17.596 ng/ml
 response 16902601