

Data Path : Z:\pestpcbsrv\HPCHEM1\ECD\_D\Data\PD042823\  
 Data File : PD075031.D  
 Signal(s) : Signal #1: ECD1A.ch Signal #2: ECD2B.ch  
 Acq On : 28 Apr 2023 15:31  
 Operator : AR\AJ  
 Sample : 02417-14  
 Misc :  
 ALS Vial : 11 Sample Multiplier: 1

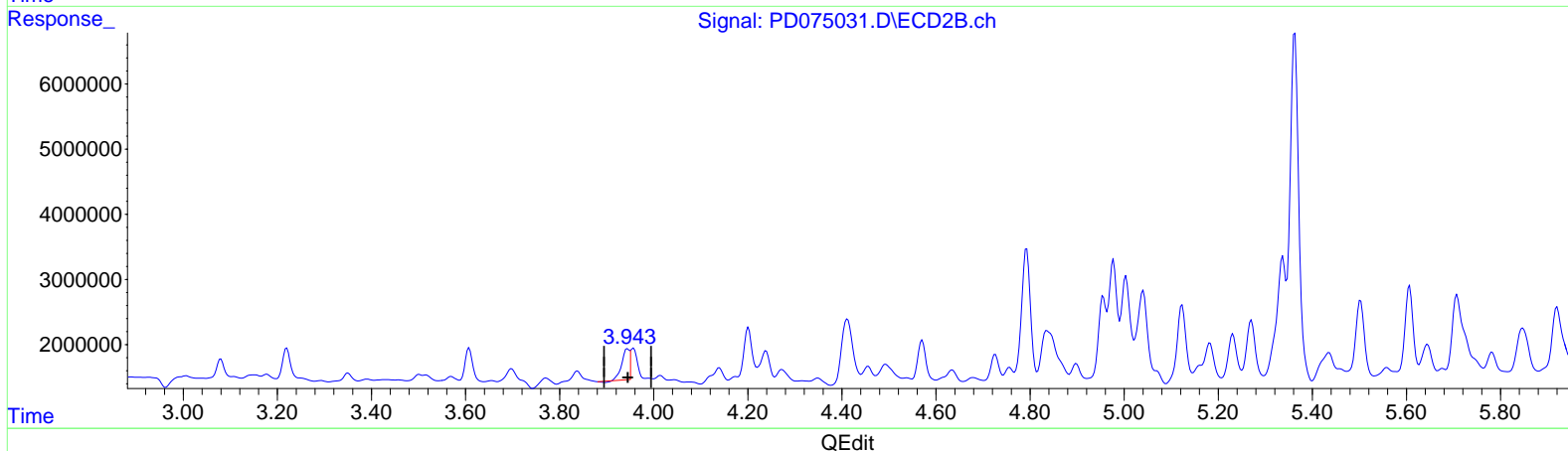
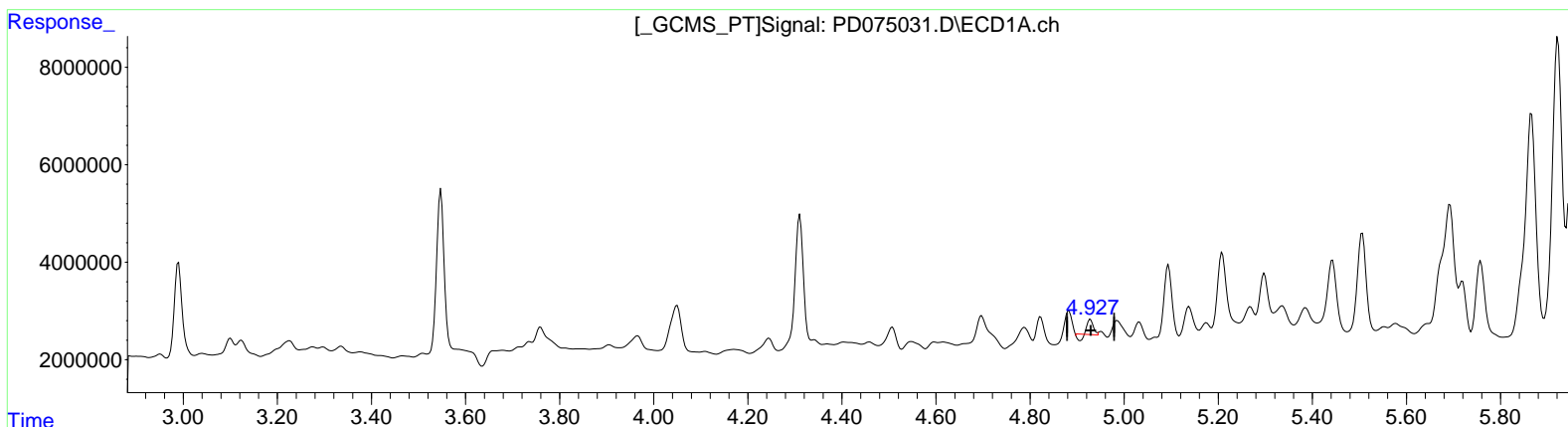
Instrument :  
 ECD\_D  
 ClientSampleId :  
 EW8Y0

Manual Integrations APPROVED

Reviewed By : Abdul Mirza 05/02/2023  
 Supervised By : Ankita Jodhani 05/02/2023

Integration File signal 1: autoint1.e  
 Integration File signal 2: autoint2.e  
 Quant Time: Apr 28 22:16:26 2023  
 Quant Method : Z:\pestpcbsrv\HPCHEM1\ECD\_D\Method\PD042723CLP.M  
 Quant Title : GC Extractables  
 QLast Update : Fri Apr 28 02:34:46 2023  
 Response via : Initial Calibration  
 Integrator: ChemStation

Volume Inj. : 1 µl  
 Signal #1 Phase : ZB-MR1 Signal #2 Phase: ZB-MR2  
 Signal #1 Info : 30M x 0.32mm x 0.5 Signal #2 Info : 30M x 0.32mm x 0.25µm



(4) Heptachlor (MA)  
 4.928min 0.550 ng/ml  
 response 1905145

(4) Heptachlor #2 (MA)  
 3.944min 3.712 ng/ml  
 response 5177053

Data Path : Z:\pestpcbsrv\HPCHEM1\ECD\_D\Data\PD042823\  
 Data File : PD075031.D  
 Signal(s) : Signal #1: ECD1A.ch Signal #2: ECD2B.ch  
 Acq On : 28 Apr 2023 15:31  
 Operator : AR\AJ  
 Sample : 02417-14  
 Misc :  
 ALS Vial : 11 Sample Multiplier: 1

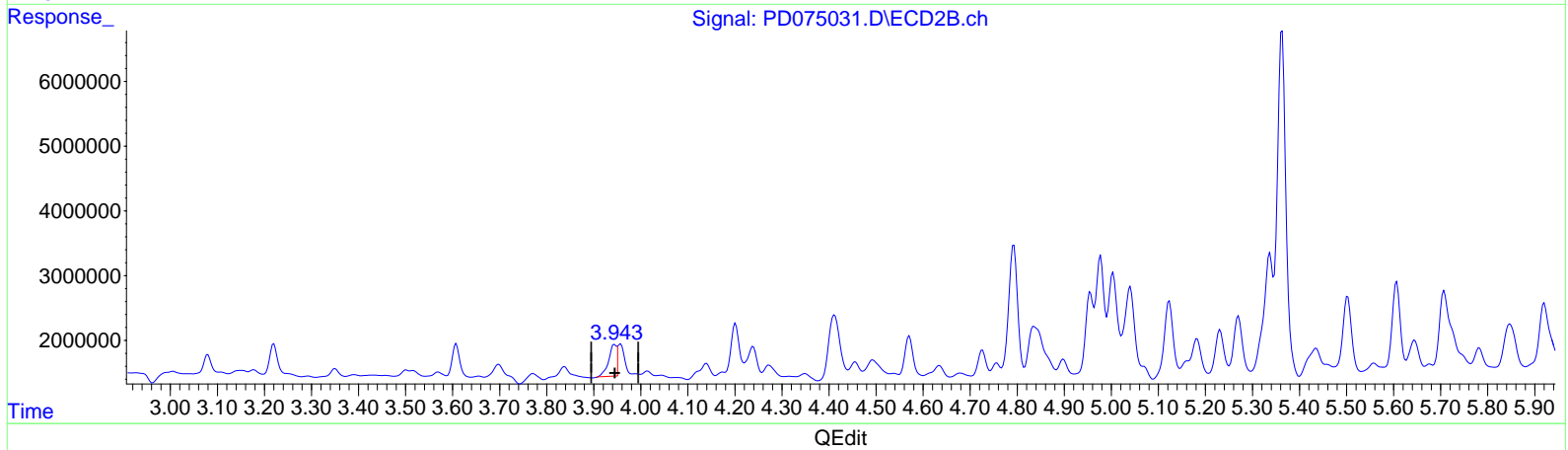
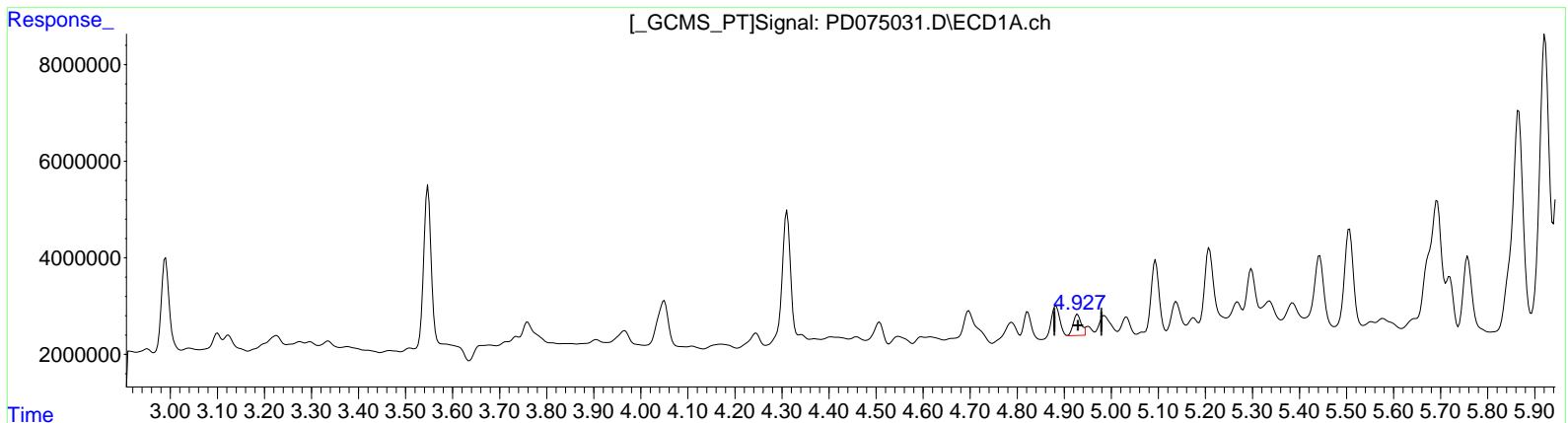
Instrument :  
 ECD\_D  
 ClientSampleId :  
 EW8Y0

Manual Integrations APPROVED

Reviewed By : Abdul Mirza 05/02/2023  
 Supervised By : Ankita Jodhani 05/02/2023

Integration File signal 1: autoint1.e  
 Integration File signal 2: autoint2.e  
 Quant Time: Apr 28 22:16:26 2023  
 Quant Method : Z:\pestpcbsrv\HPCHEM1\ECD\_D\Method\PD042723CLP.M  
 Quant Title : GC Extractables  
 QLast Update : Fri Apr 28 02:34:46 2023  
 Response via : Initial Calibration  
 Integrator: ChemStation

Volume Inj. : 1 µl  
 Signal #1 Phase : ZB-MR1 Signal #2 Phase: ZB-MR2  
 Signal #1 Info : 30M x 0.32mm x 0.5 Signal #2 Info : 30M x 0.32mm x 0.25µm



(4) Heptachlor (MA)  
 4.927min 1.572 ng/ml m  
 response 5446399

(4) Heptachlor #2 (MA)  
 3.943min 4.688 ng/ml m  
 response 6538260

Data Path : Z:\pestpcbsrv\HPCHEM1\ECD\_D\Data\PD042823\  
 Data File : PD075031.D  
 Signal(s) : Signal #1: ECD1A.ch Signal #2: ECD2B.ch  
 Acq On : 28 Apr 2023 15:31  
 Operator : AR\AJ  
 Sample : 02417-14  
 Misc :  
 ALS Vial : 11 Sample Multiplier: 1

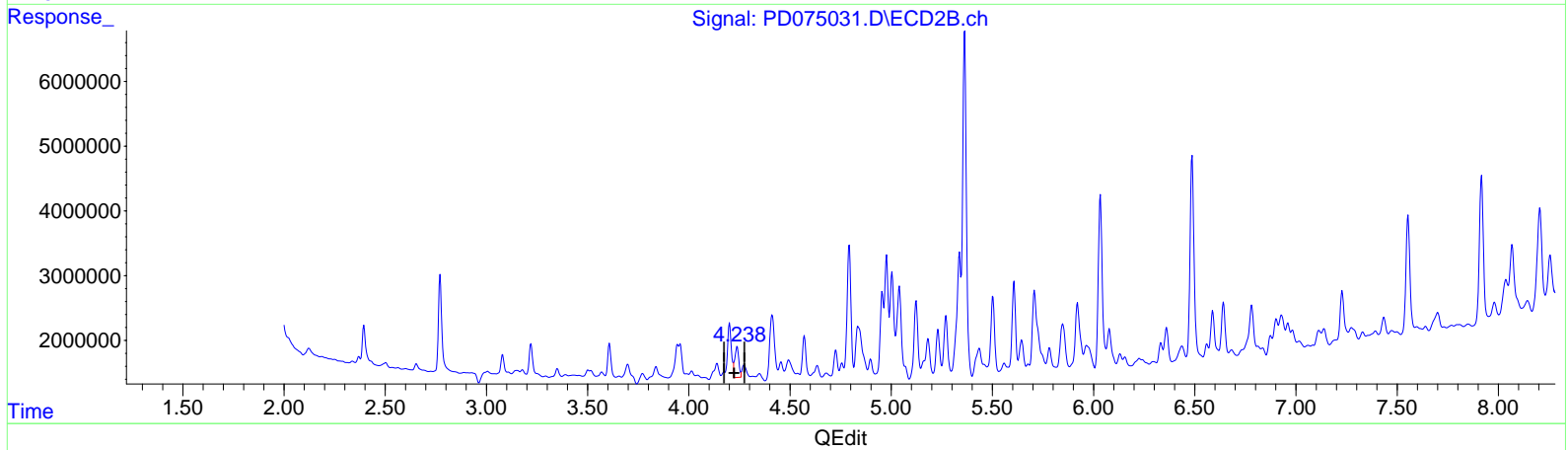
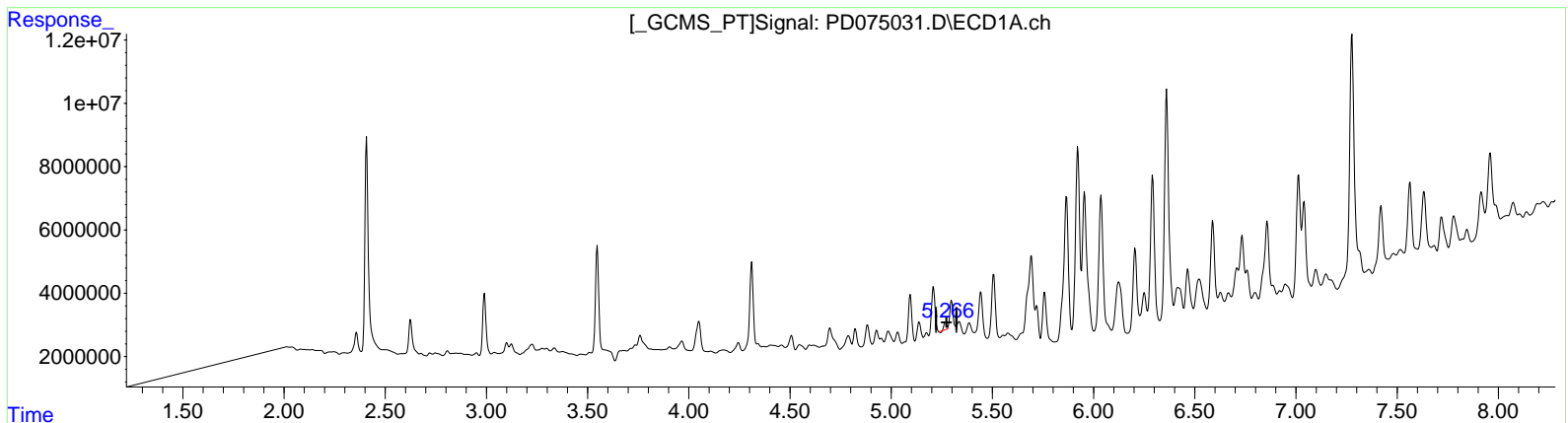
Instrument :  
 ECD\_D  
 ClientSampleId :  
 EW8Y0

Manual Integrations APPROVED

Reviewed By : Abdul Mirza 05/02/2023  
 Supervised By : Ankita Jodhani 05/02/2023

Integration File signal 1: autoint1.e  
 Integration File signal 2: autoint2.e  
 Quant Time: Apr 28 22:16:26 2023  
 Quant Method : Z:\pestpcbsrv\HPCHEM1\ECD\_D\Method\PD042723CLP.M  
 Quant Title : GC Extractables  
 QLast Update : Fri Apr 28 02:34:46 2023  
 Response via : Initial Calibration  
 Integrator: ChemStation

Volume Inj. : 1 µl  
 Signal #1 Phase : ZB-MR1 Signal #2 Phase: ZB-MR2  
 Signal #1 Info : 30M x 0.32mm x 0.5 Signal #2 Info : 30M x 0.32mm x 0.25µm



(5) Aldrin (MB)  
 5.268min 0.567 ng/ml  
 response 1898927

(5) Aldrin #2 (MB)  
 4.239min 5.106 ng/ml  
 response 6714739

Data Path : Z:\pestpcbsrv\HPCHEM1\ECD\_D\Data\PD042823\  
 Data File : PD075031.D  
 Signal(s) : Signal #1: ECD1A.ch Signal #2: ECD2B.ch  
 Acq On : 28 Apr 2023 15:31  
 Operator : AR\AJ  
 Sample : 02417-14  
 Misc :  
 ALS Vial : 11 Sample Multiplier: 1

**Instrument :**

ECD\_D

**ClientSampleId :**

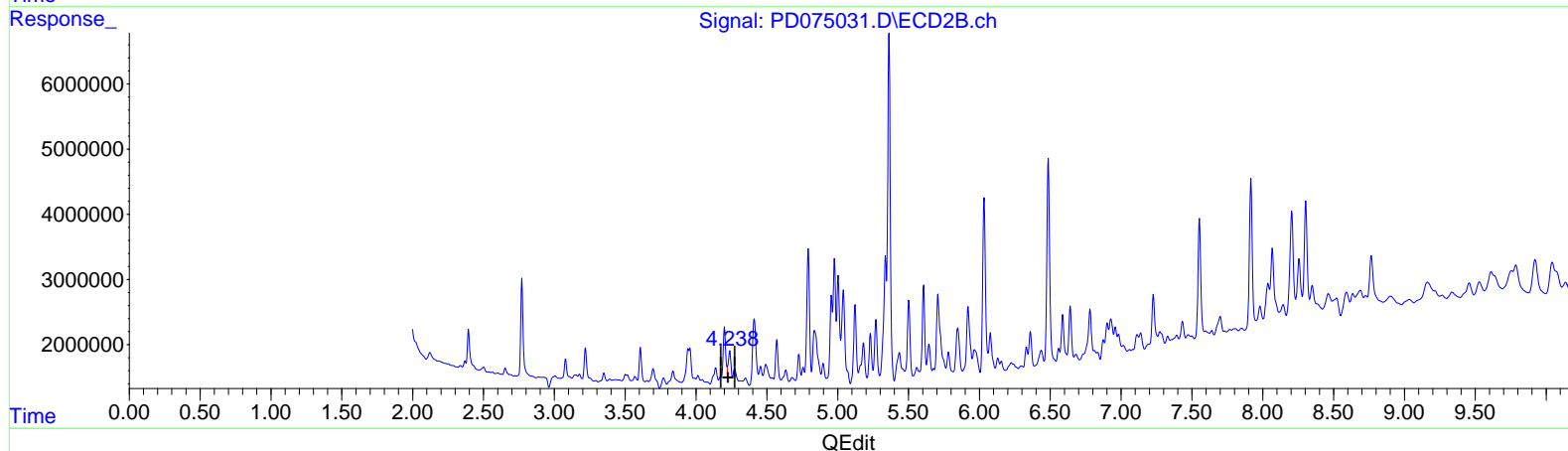
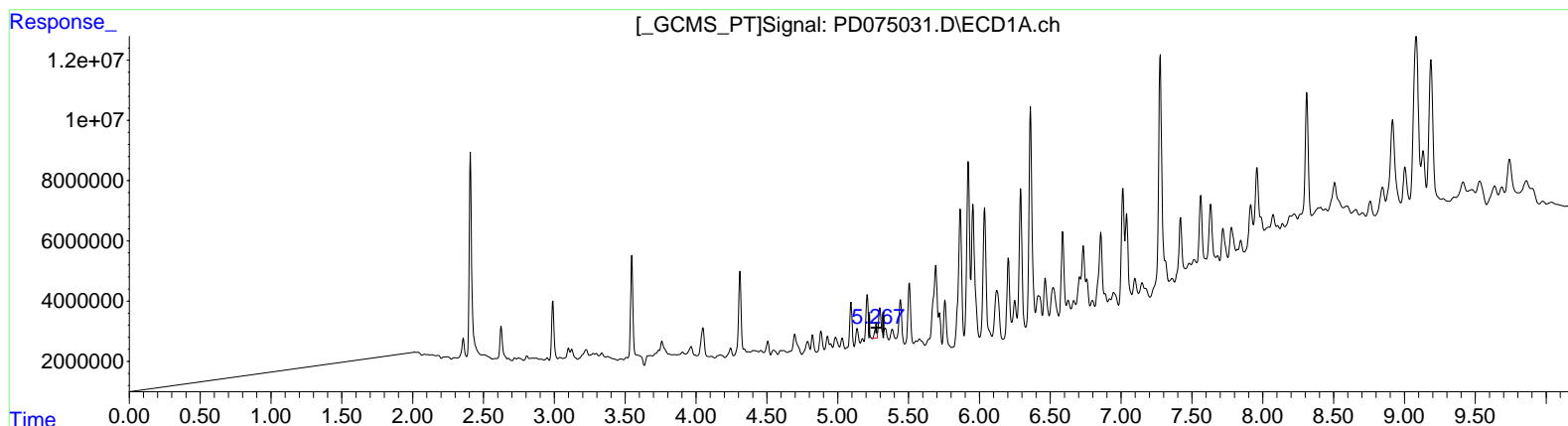
EW8Y0

**Manual IntegrationsAPPROVED**

Reviewed By :Abdul Mirza 05/02/2023  
 Supervised By :Ankita Jodhani 05/02/2023

Integration File signal 1: autoint1.e  
 Integration File signal 2: autoint2.e  
 Quant Time: Apr 28 22:16:26 2023  
 Quant Method : Z:\pestpcbsrv\HPCHEM1\ECD\_D\Method\PD042723CLP.M  
 Quant Title : GC Extractables  
 QLast Update : Fri Apr 28 02:34:46 2023  
 Response via : Initial Calibration  
 Integrator: ChemStation

Volume Inj. : 1 µl  
 Signal #1 Phase : ZB-MR1 Signal #2 Phase: ZB-MR2  
 Signal #1 Info : 30M x 0.32mm x0.5 Signal #2 Info : 30M x 0.32mm x 0.25µm



(5) Aldrin (MB)  
 5.267min 0.998 ng/ml m  
 response 3343928

(5) Aldrin #2 (MB)  
 4.238min 3.933 ng/ml m  
 response 5171657

Data Path : Z:\pestpcbsrv\HPCHEM1\ECD\_D\Data\PD042823\  
 Data File : PD075031.D  
 Signal(s) : Signal #1: ECD1A.ch Signal #2: ECD2B.ch  
 Acq On : 28 Apr 2023 15:31  
 Operator : AR\AJ  
 Sample : 02417-14  
 Misc :  
 ALS Vial : 11 Sample Multiplier: 1

**Instrument :**

ECD\_D

**ClientSampleId :**

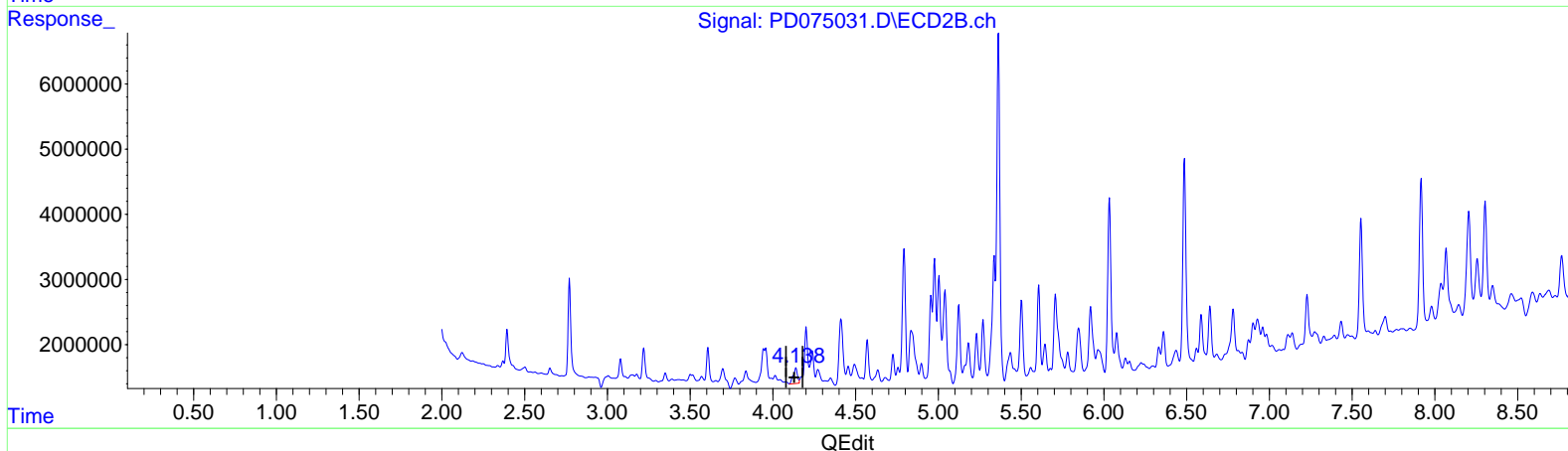
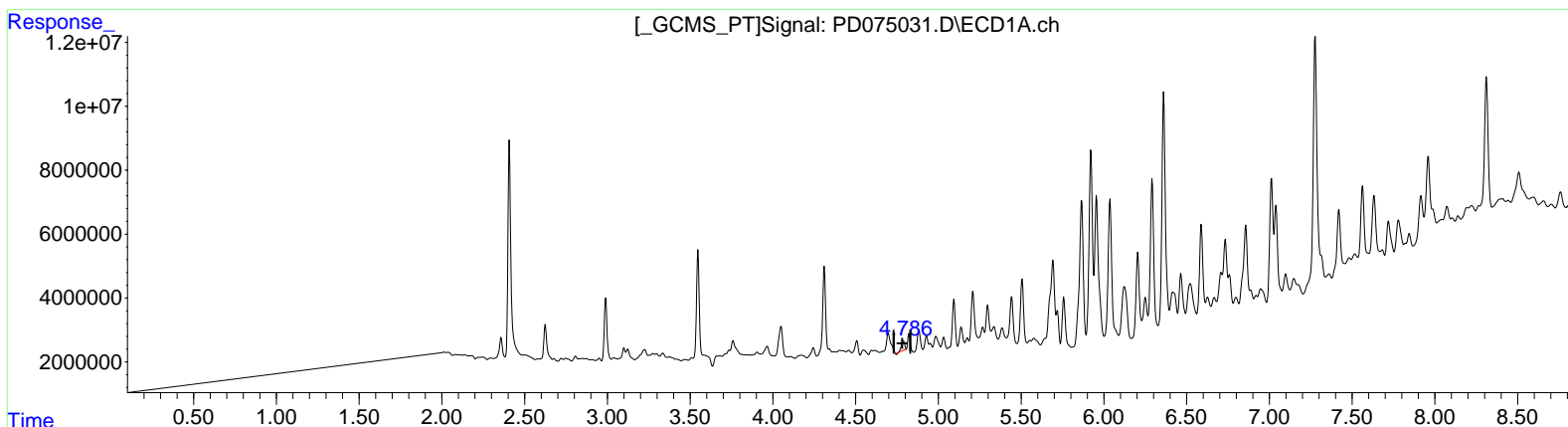
EW8Y0

**Manual IntegrationsAPPROVED**

Reviewed By :Abdul Mirza 05/02/2023  
 Supervised By :Ankita Jodhani 05/02/2023

Integration File signal 1: autoint1.e  
 Integration File signal 2: autoint2.e  
 Quant Time: Apr 28 22:16:26 2023  
 Quant Method : Z:\pestpcbsrv\HPCHEM1\ECD\_D\Method\PD042723CLP.M  
 Quant Title : GC Extractables  
 QLast Update : Fri Apr 28 02:34:46 2023  
 Response via : Initial Calibration  
 Integrator: ChemStation

Volume Inj. : 1 µl  
 Signal #1 Phase : ZB-MR1 Signal #2 Phase: ZB-MR2  
 Signal #1 Info : 30M x 0.32mm x0.5 Signal #2 Info : 30M x 0.32mm x 0.25µm



(7) delta-BHC (B)  
 4.788min 1.316 ng/ml  
 response 3939547

(7) delta-BHC #2 (B)  
 4.140min 2.938 ng/ml  
 response 4133358

Data Path : Z:\pestpcbsrv\HPCHEM1\ECD\_D\Data\PD042823\  
 Data File : PD075031.D  
 Signal(s) : Signal #1: ECD1A.ch Signal #2: ECD2B.ch  
 Acq On : 28 Apr 2023 15:31  
 Operator : AR\AJ  
 Sample : 02417-14  
 Misc :  
 ALS Vial : 11 Sample Multiplier: 1

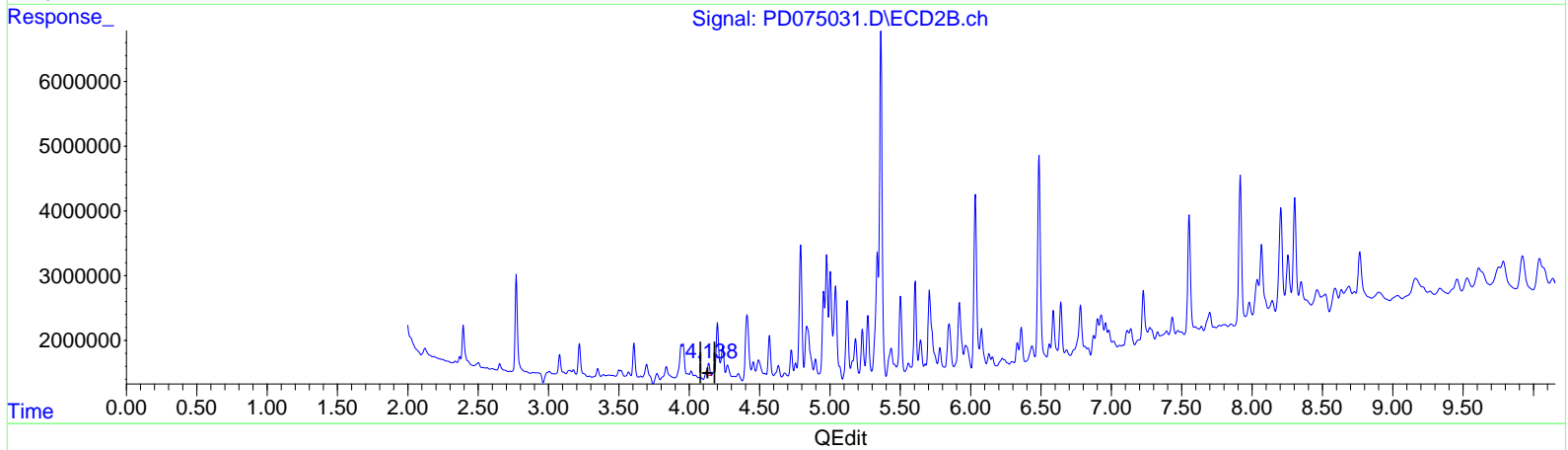
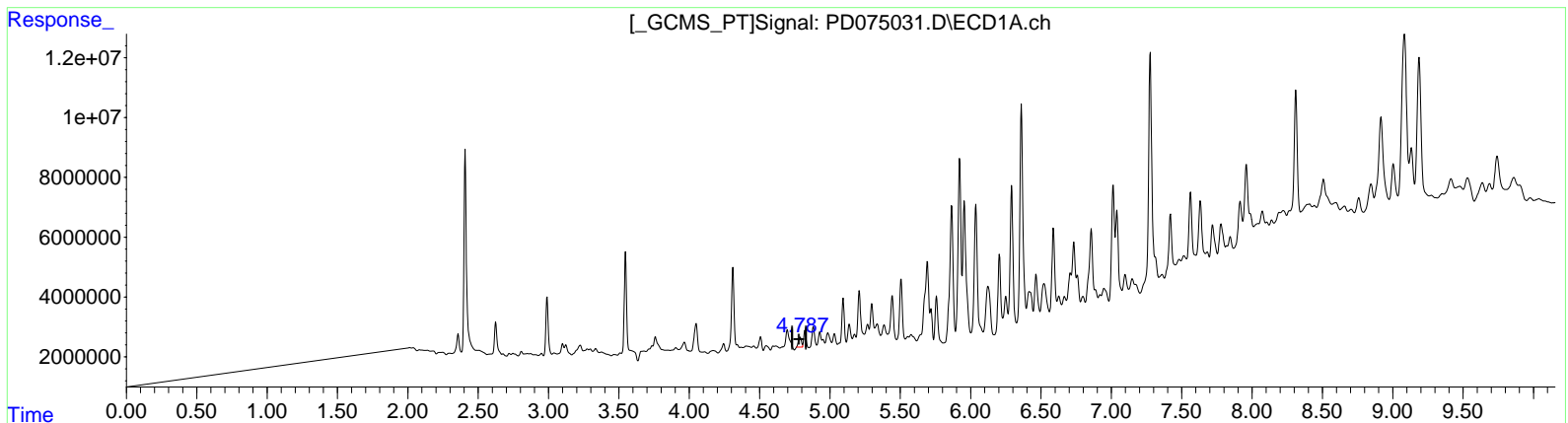
Instrument :  
 ECD\_D  
 ClientSampleId :  
 EW8Y0

Manual Integrations APPROVED

Reviewed By : Abdul Mirza 05/02/2023  
 Supervised By : Ankita Jodhani 05/02/2023

Integration File signal 1: autoint1.e  
 Integration File signal 2: autoint2.e  
 Quant Time: Apr 28 22:16:26 2023  
 Quant Method : Z:\pestpcbsrv\HPCHEM1\ECD\_D\Method\PD042723CLP.M  
 Quant Title : GC Extractables  
 QLast Update : Fri Apr 28 02:34:46 2023  
 Response via : Initial Calibration  
 Integrator: ChemStation

Volume Inj. : 1 µl  
 Signal #1 Phase : ZB-MR1 Signal #2 Phase: ZB-MR2  
 Signal #1 Info : 30M x 0.32mm x 0.5 Signal #2 Info : 30M x 0.32mm x 0.25µm



(7) delta-BHC (B)  
 4.787min 1.708 ng/ml m  
 response 5113758

(7) delta-BHC #2 (B)  
 4.138min 1.445 ng/ml m  
 response 2032438

Data Path : Z:\pestpcbsrv\HPCHEM1\ECD\_D\Data\PD042823\  
 Data File : PD075031.D  
 Signal(s) : Signal #1: ECD1A.ch Signal #2: ECD2B.ch  
 Acq On : 28 Apr 2023 15:31  
 Operator : AR\AJ  
 Sample : 02417-14  
 Misc :  
 ALS Vial : 11 Sample Multiplier: 1

**Instrument :**

ECD\_D

**ClientSampleId :**

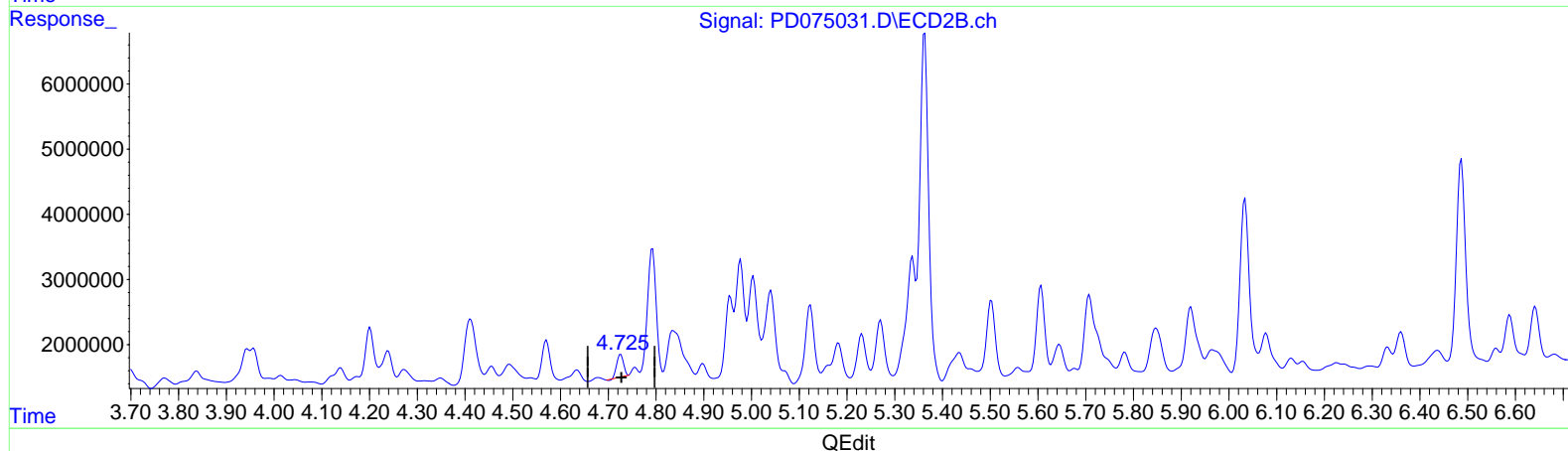
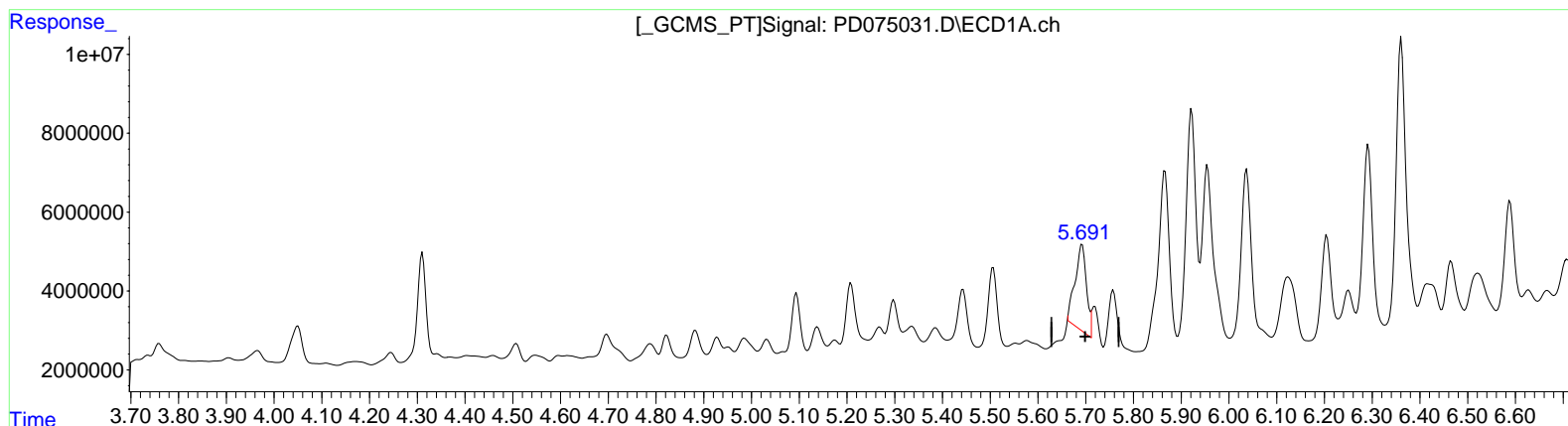
EW8Y0

**Manual IntegrationsAPPROVED**

Reviewed By :Abdul Mirza 05/02/2023  
 Supervised By :Ankita Jodhani 05/02/2023

Integration File signal 1: autoint1.e  
 Integration File signal 2: autoint2.e  
 Quant Time: Apr 28 22:16:26 2023  
 Quant Method : Z:\pestpcbsrv\HPCHEM1\ECD\_D\Method\PD042723CLP.M  
 Quant Title : GC Extractables  
 QLast Update : Fri Apr 28 02:34:46 2023  
 Response via : Initial Calibration  
 Integrator: ChemStation

Volume Inj. : 1 µl  
 Signal #1 Phase : ZB-MR1 Signal #2 Phase: ZB-MR2  
 Signal #1 Info : 30M x 0.32mm x0.5 Signal #2 Info : 30M x 0.32mm x 0.25µm



(8) Heptachlor epoxide (B)  
 5.692min 12.035 ng/ml  
 response 36144259

(8) Heptachlor epoxide #2 (B)  
 4.726min 2.721 ng/ml  
 response 3340505

Data Path : Z:\pestpcbsrv\HPCHEM1\ECD\_D\Data\PD042823\  
 Data File : PD075031.D  
 Signal(s) : Signal #1: ECD1A.ch Signal #2: ECD2B.ch  
 Acq On : 28 Apr 2023 15:31  
 Operator : AR\AJ  
 Sample : 02417-14  
 Misc :  
 ALS Vial : 11 Sample Multiplier: 1

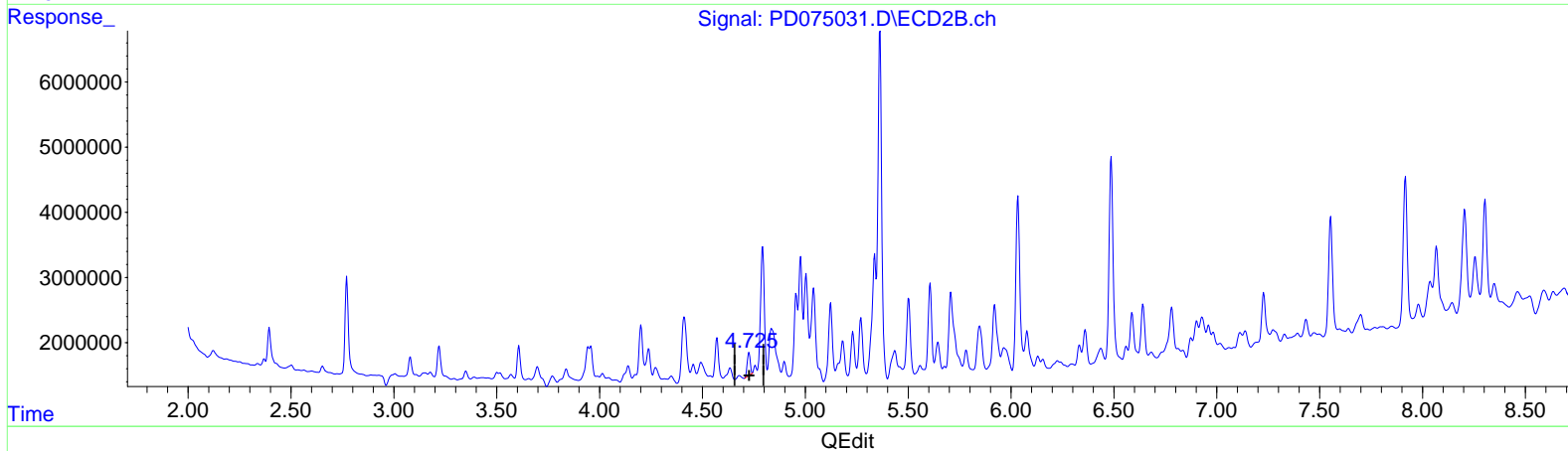
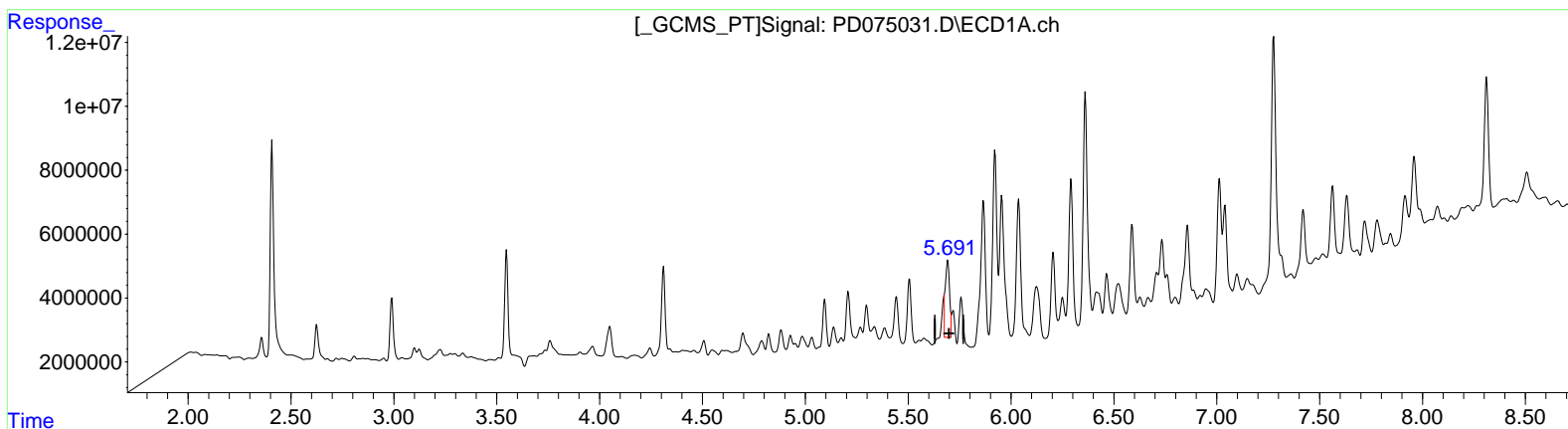
Instrument :  
 ECD\_D  
 ClientSampleId :  
 EW8Y0

Manual Integrations APPROVED

Reviewed By : Abdul Mirza 05/02/2023  
 Supervised By : Ankita Jodhani 05/02/2023

Integration File signal 1: autoint1.e  
 Integration File signal 2: autoint2.e  
 Quant Time: Apr 28 22:16:26 2023  
 Quant Method : Z:\pestpcbsrv\HPCHEM1\ECD\_D\Method\PD042723CLP.M  
 Quant Title : GC Extractables  
 QLast Update : Fri Apr 28 02:34:46 2023  
 Response via : Initial Calibration  
 Integrator: ChemStation

Volume Inj. : 1 µl  
 Signal #1 Phase : ZB-MR1 Signal #2 Phase: ZB-MR2  
 Signal #1 Info : 30M x 0.32mm x 0.5 Signal #2 Info : 30M x 0.32mm x 0.25µm



(8) Heptachlor epoxide (B)  
 5.691min 11.427 ng/ml m  
 response 34317532

(8) Heptachlor epoxide #2 (B)  
 4.725min 2.936 ng/ml m  
 response 3605075



Data Path : Z:\pestpcbsrv\HPCHEM1\ECD\_D\Data\PD042823\  
 Data File : PD075031.D  
 Signal(s) : Signal #1: ECD1A.ch Signal #2: ECD2B.ch  
 Acq On : 28 Apr 2023 15:31  
 Operator : AR\AJ  
 Sample : 02417-14  
 Misc :  
 ALS Vial : 11 Sample Multiplier: 1

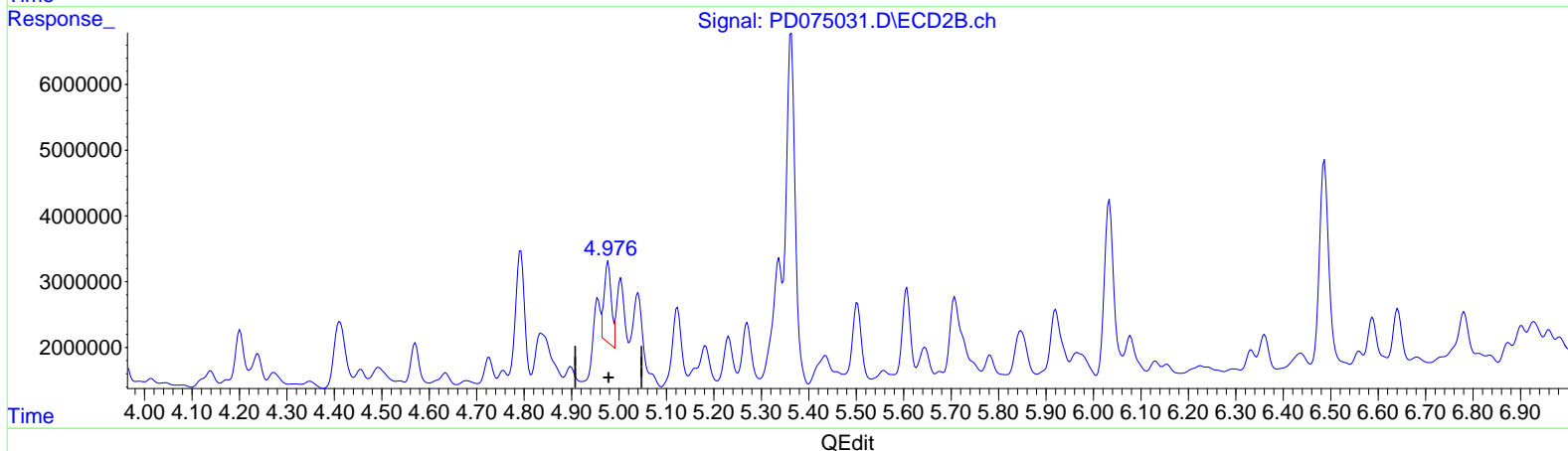
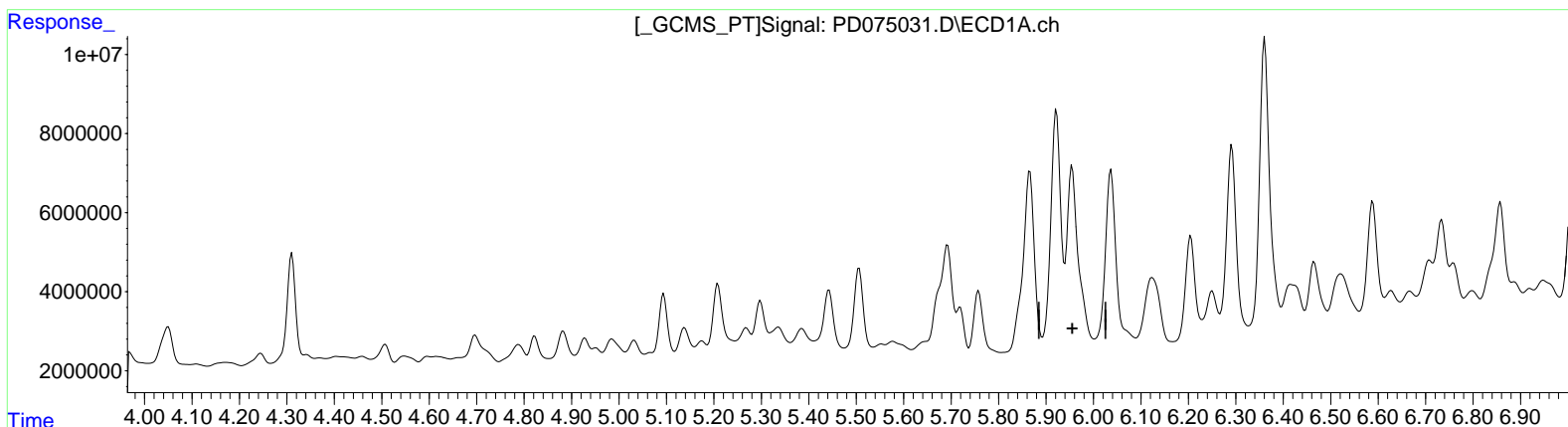
Instrument :  
 ECD\_D  
 ClientSampleId :  
 EW8Y0

Manual Integrations APPROVED

Reviewed By : Abdul Mirza 05/02/2023  
 Supervised By : Ankita Jodhani 05/02/2023

Integration File signal 1: autoint1.e  
 Integration File signal 2: autoint2.e  
 Quant Time: Apr 28 22:16:26 2023  
 Quant Method : Z:\pestpcbsrv\HPCHEM1\ECD\_D\Method\PD042723CLP.M  
 Quant Title : GC Extractables  
 QLast Update : Fri Apr 28 02:34:46 2023  
 Response via : Initial Calibration  
 Integrator: ChemStation

Volume Inj. : 1 µl  
 Signal #1 Phase : ZB-MR1 Signal #2 Phase: ZB-MR2  
 Signal #1 Info : 30M x 0.32mm x 0.5 Signal #2 Info : 30M x 0.32mm x 0.25µm



(10) trans-Chlordane (B)  
 5.955min -4.908 ng/ml  
 response -14692592

(10) trans-Chlordane #2 (B)  
 4.977min 10.711 ng/ml  
 response 12976262

Data Path : Z:\pestpcbsrv\HPCHEM1\ECD\_D\Data\PD042823\  
 Data File : PD075031.D  
 Signal(s) : Signal #1: ECD1A.ch Signal #2: ECD2B.ch  
 Acq On : 28 Apr 2023 15:31  
 Operator : AR\AJ  
 Sample : 02417-14  
 Misc :  
 ALS Vial : 11 Sample Multiplier: 1

**Instrument :**

ECD\_D

**ClientSampleId :**

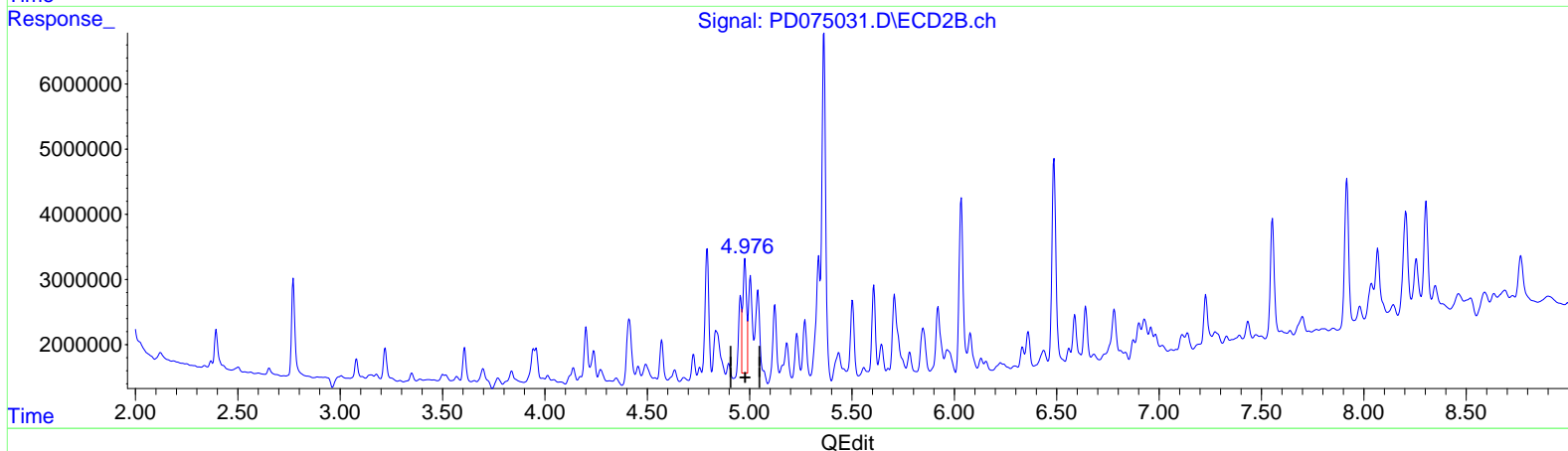
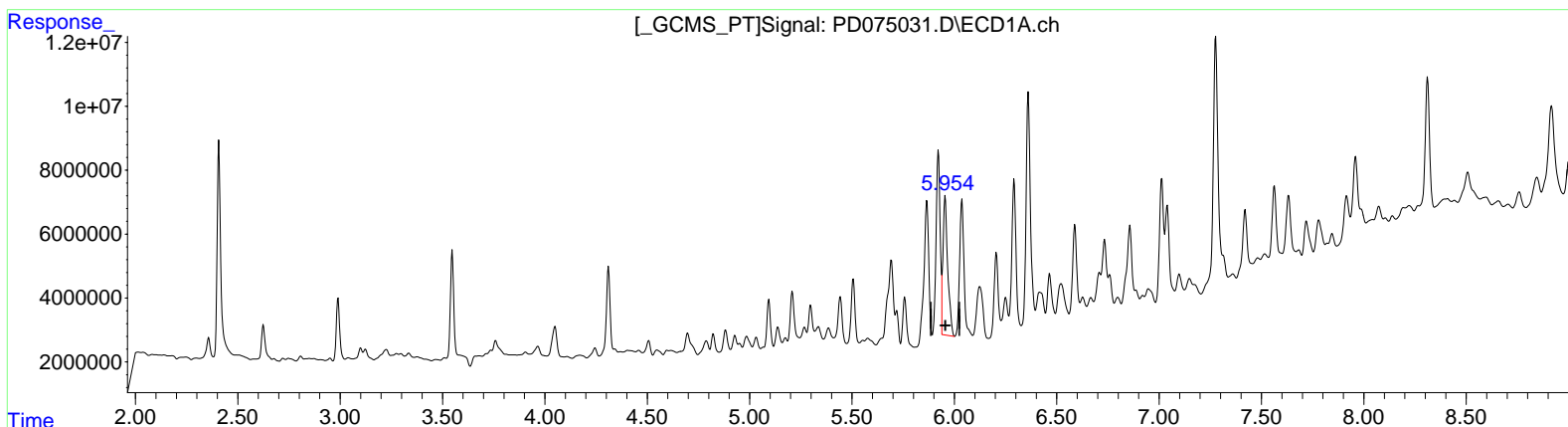
EW8Y0

**Manual IntegrationsAPPROVED**

Reviewed By :Abdul Mirza 05/02/2023  
 Supervised By :Ankita Jodhani 05/02/2023

Integration File signal 1: autoint1.e  
 Integration File signal 2: autoint2.e  
 Quant Time: Apr 28 22:16:26 2023  
 Quant Method : Z:\pestpcbsrv\HPCHEM1\ECD\_D\Method\PD042723CLP.M  
 Quant Title : GC Extractables  
 QLast Update : Fri Apr 28 02:34:46 2023  
 Response via : Initial Calibration  
 Integrator: ChemStation

Volume Inj. : 1 µl  
 Signal #1 Phase : ZB-MR1 Signal #2 Phase: ZB-MR2  
 Signal #1 Info : 30M x 0.32mm x0.5 Signal #2 Info : 30M x 0.32mm x 0.25µm



(10) trans-Chlordane (B)  
 5.954min 23.256 ng/ml m  
 response 69614775

(10) trans-Chlordane #2 (B)  
 4.976min 16.940 ng/ml m  
 response 20522033

Data Path : Z:\pestpcbsrv\HPCHEM1\ECD\_D\Data\PD042823\  
 Data File : PD075031.D  
 Signal(s) : Signal #1: ECD1A.ch Signal #2: ECD2B.ch  
 Acq On : 28 Apr 2023 15:31  
 Operator : AR\AJ  
 Sample : 02417-14  
 Misc :  
 ALS Vial : 11 Sample Multiplier: 1

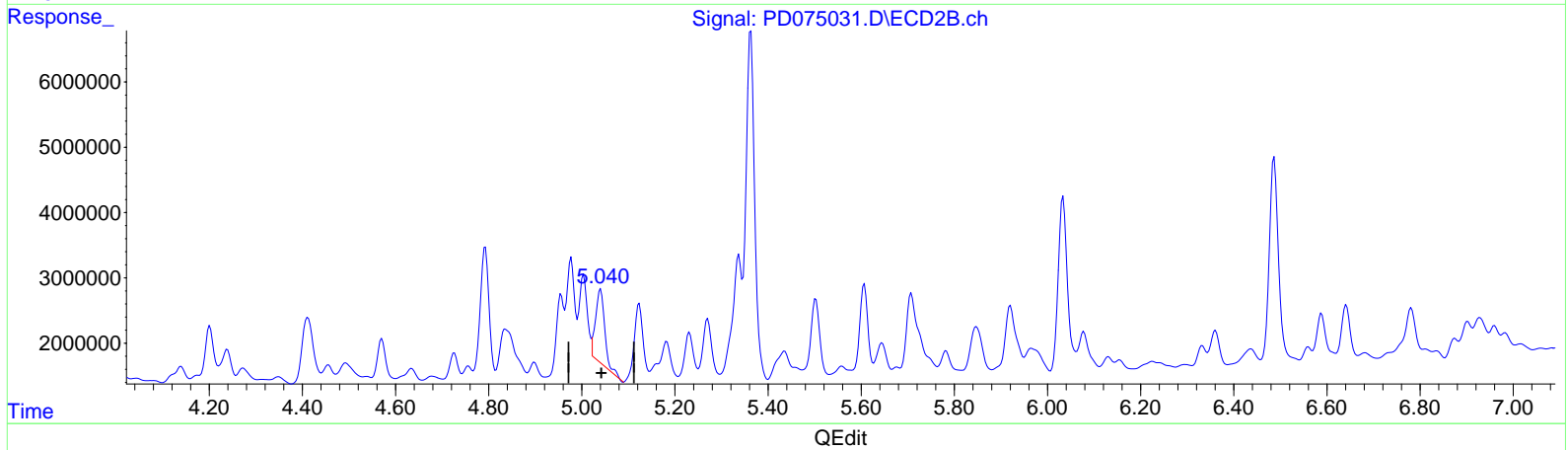
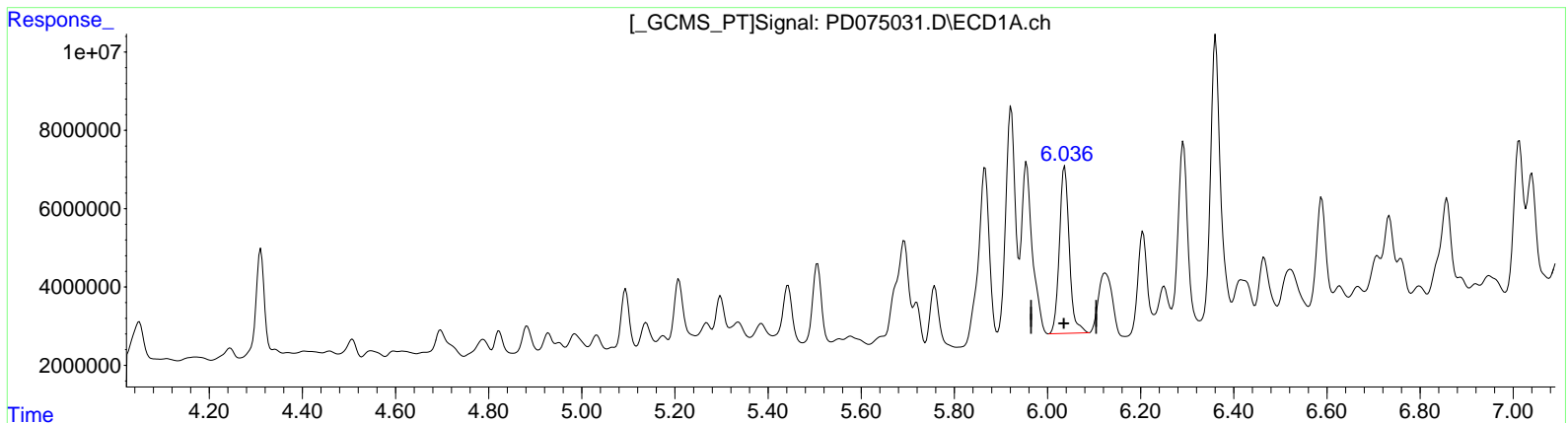
Instrument :  
 ECD\_D  
 ClientSampleId :  
 EW8Y0

Manual Integrations APPROVED

Reviewed By : Abdul Mirza 05/02/2023  
 Supervised By : Ankita Jodhani 05/02/2023

Integration File signal 1: autoint1.e  
 Integration File signal 2: autoint2.e  
 Quant Time: Apr 28 22:16:26 2023  
 Quant Method : Z:\pestpcbsrv\HPCHEM1\ECD\_D\Method\PD042723CLP.M  
 Quant Title : GC Extractables  
 QLast Update : Fri Apr 28 02:34:46 2023  
 Response via : Initial Calibration  
 Integrator: ChemStation

Volume Inj. : 1 µl  
 Signal #1 Phase : ZB-MR1 Signal #2 Phase: ZB-MR2  
 Signal #1 Info : 30M x 0.32mm x 0.5 Signal #2 Info : 30M x 0.32mm x 0.25µm



(11) cis-Chlordane (B)  
 6.037min 20.264 ng/ml  
 response 63165829

(11) cis-Chlordane #2 (B)  
 5.041min 12.606 ng/ml  
 response 15608615

Data Path : Z:\pestpcbsrv\HPCHEM1\ECD\_D\Data\PD042823\  
 Data File : PD075031.D  
 Signal(s) : Signal #1: ECD1A.ch Signal #2: ECD2B.ch  
 Acq On : 28 Apr 2023 15:31  
 Operator : AR\AJ  
 Sample : 02417-14  
 Misc :  
 ALS Vial : 11 Sample Multiplier: 1

**Instrument :**

ECD\_D

**ClientSampleId :**

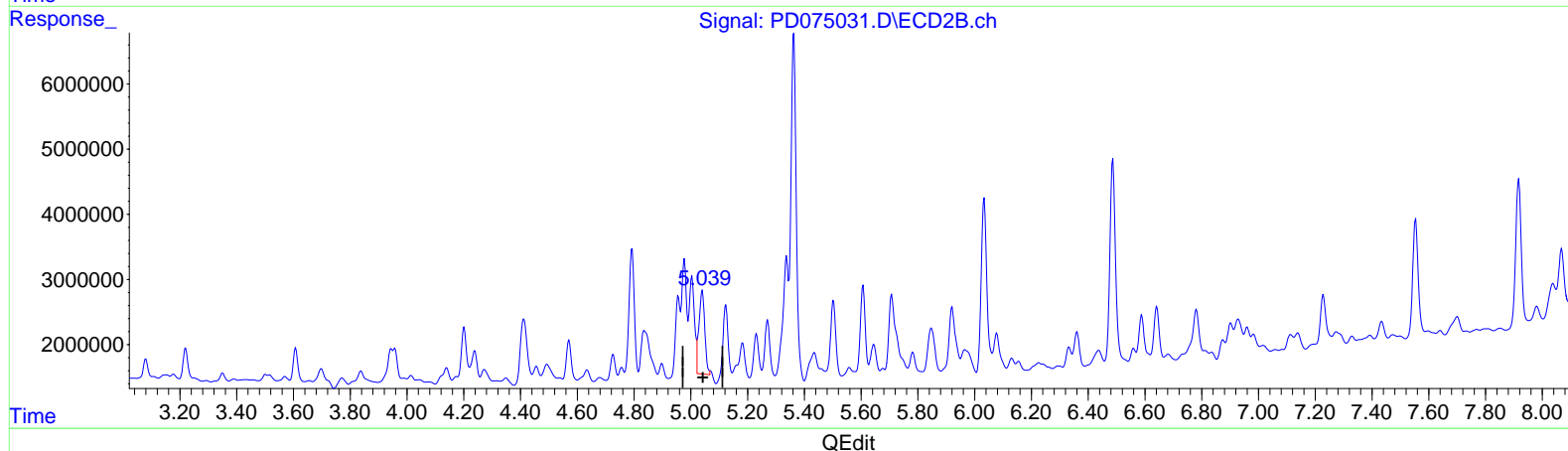
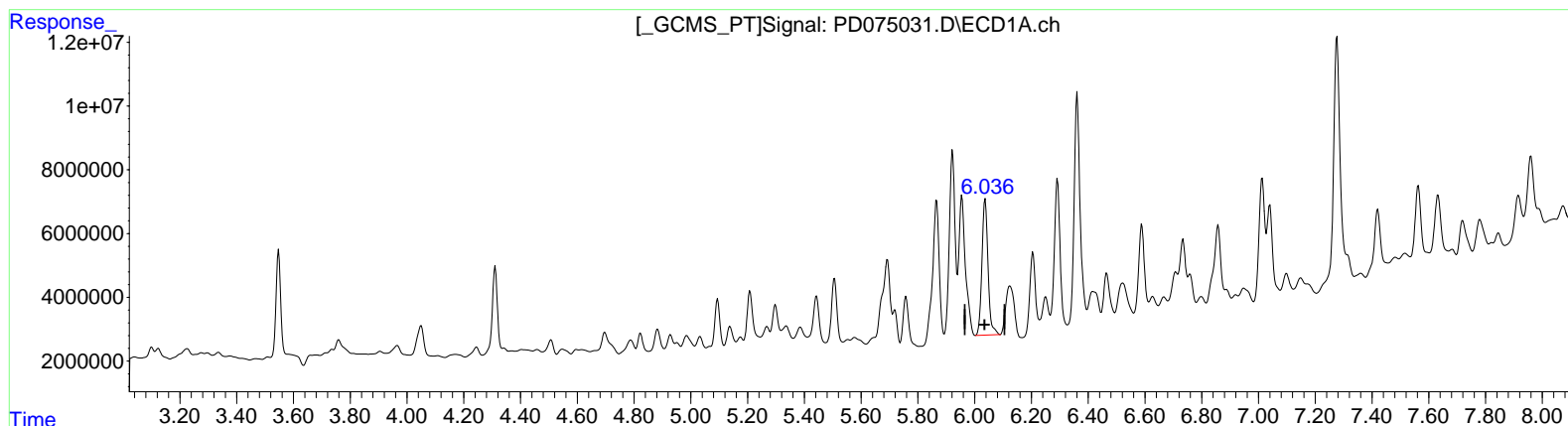
EW8Y0

**Manual IntegrationsAPPROVED**

Reviewed By :Abdul Mirza 05/02/2023  
 Supervised By :Ankita Jodhani 05/02/2023

Integration File signal 1: autoint1.e  
 Integration File signal 2: autoint2.e  
 Quant Time: Apr 28 22:16:26 2023  
 Quant Method : Z:\pestpcbsrv\HPCHEM1\ECD\_D\Method\PD042723CLP.M  
 Quant Title : GC Extractables  
 QLast Update : Fri Apr 28 02:34:46 2023  
 Response via : Initial Calibration  
 Integrator: ChemStation

Volume Inj. : 1 µl  
 Signal #1 Phase : ZB-MR1 Signal #2 Phase: ZB-MR2  
 Signal #1 Info : 30M x 0.32mm x0.5 Signal #2 Info : 30M x 0.32mm x 0.25µm



(11) cis-Chlordane (B)

6.037min 20.264 ng/ml

response 63165829

(11) cis-Chlordane #2 (B)

5.039min 14.802 ng/ml m

response 18327675

Data Path : Z:\pestpcbsrv\HPCHEM1\ECD\_D\Data\PD042823\  
 Data File : PD075031.D  
 Signal(s) : Signal #1: ECD1A.ch Signal #2: ECD2B.ch  
 Acq On : 28 Apr 2023 15:31  
 Operator : AR\AJ  
 Sample : 02417-14  
 Misc :  
 ALS Vial : 11 Sample Multiplier: 1

**Instrument :**

ECD\_D

**ClientSampleId :**

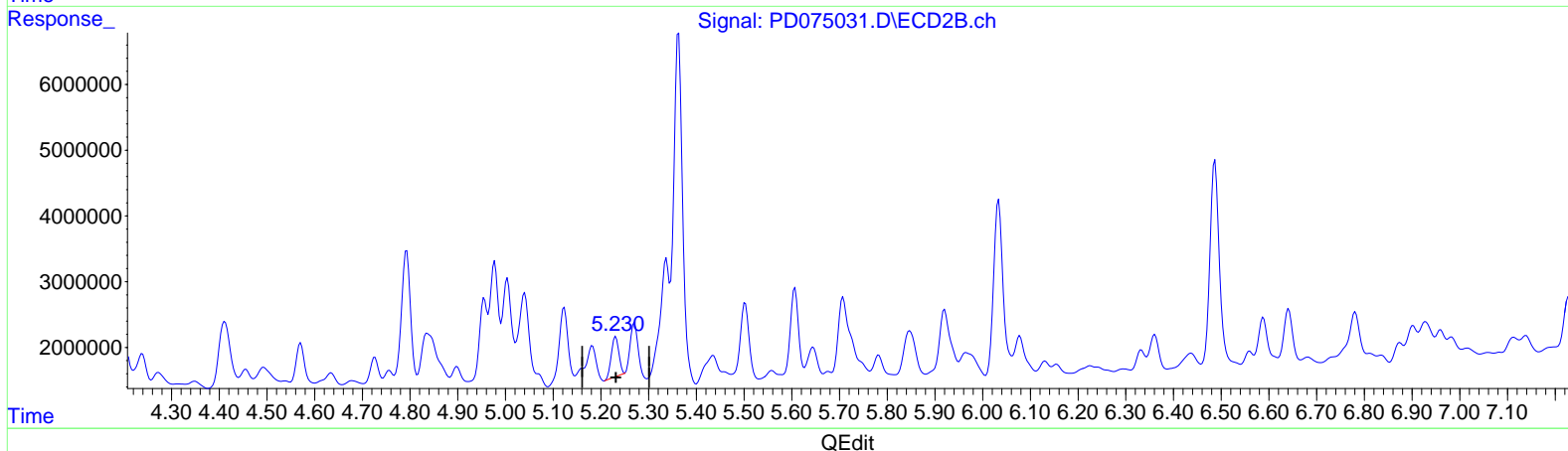
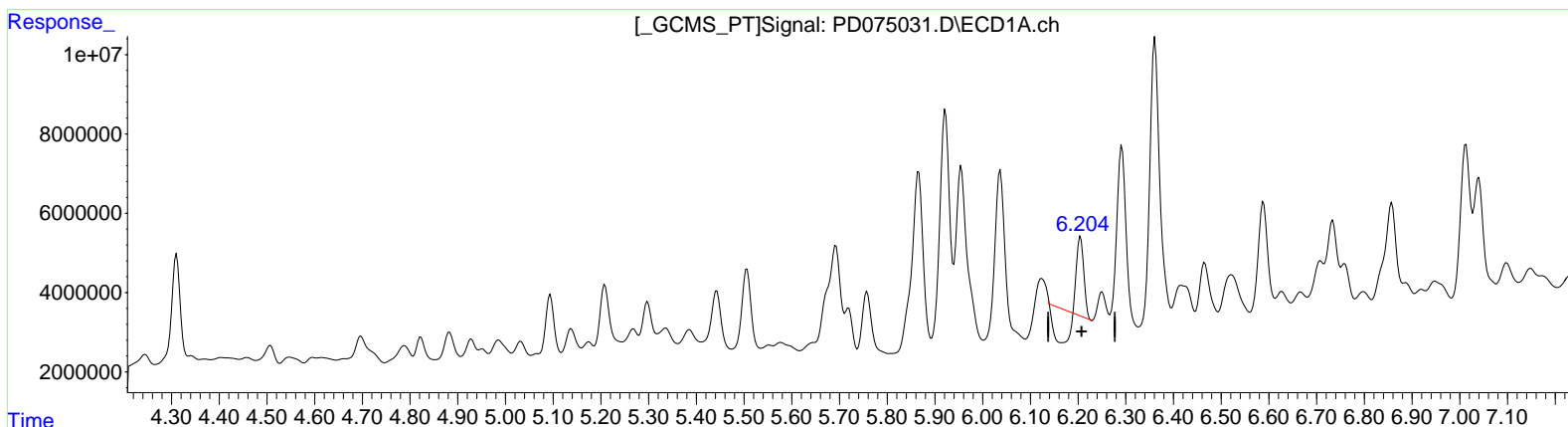
EW8Y0

**Manual IntegrationsAPPROVED**

Reviewed By :Abdul Mirza 05/02/2023  
 Supervised By :Ankita Jodhani 05/02/2023

Integration File signal 1: autoint1.e  
 Integration File signal 2: autoint2.e  
 Quant Time: Apr 28 22:16:26 2023  
 Quant Method : Z:\pestpcbsrv\HPCHEM1\ECD\_D\Method\PD042723CLP.M  
 Quant Title : GC Extractables  
 QLast Update : Fri Apr 28 02:34:46 2023  
 Response via : Initial Calibration  
 Integrator: ChemStation

Volume Inj. : 1 µl  
 Signal #1 Phase : ZB-MR1 Signal #2 Phase: ZB-MR2  
 Signal #1 Info : 30M x 0.32mm x0.5 Signal #2 Info : 30M x 0.32mm x 0.25µm



(12) 4,4'-DDE (B)  
 6.205min 1.584 ng/ml  
 response 4653555

(12) 4,4'-DDE #2 (B)  
 5.231min 5.873 ng/ml  
 response 6643842

Data Path : Z:\pestpcbsrv\HPCHEM1\ECD\_D\Data\PD042823\  
 Data File : PD075031.D  
 Signal(s) : Signal #1: ECD1A.ch Signal #2: ECD2B.ch  
 Acq On : 28 Apr 2023 15:31  
 Operator : AR\AJ  
 Sample : 02417-14  
 Misc :  
 ALS Vial : 11 Sample Multiplier: 1

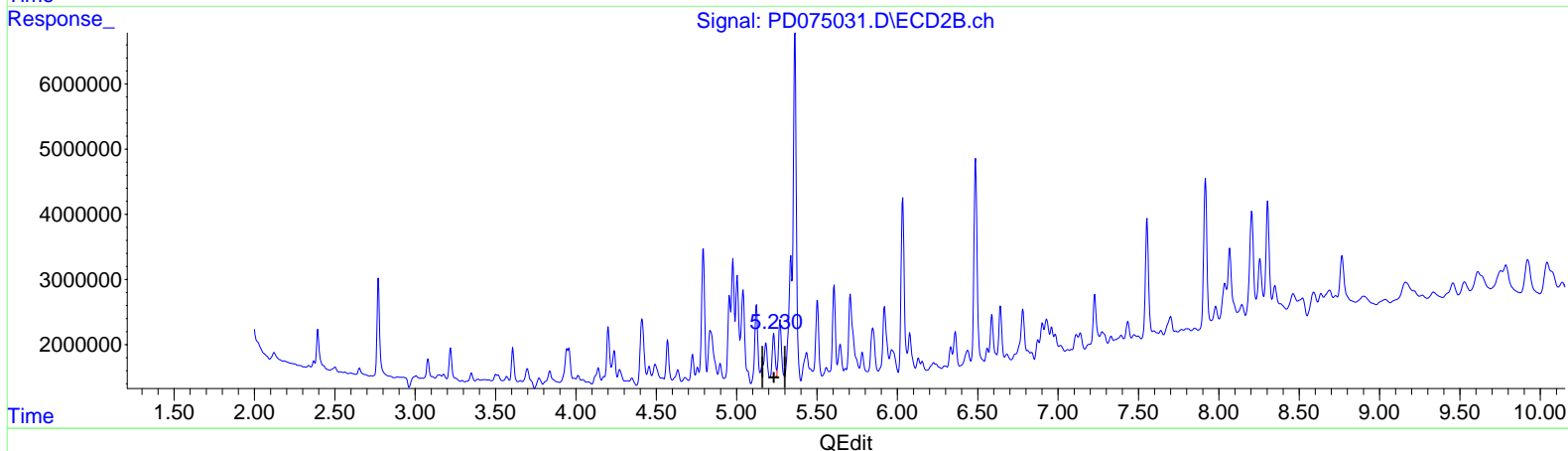
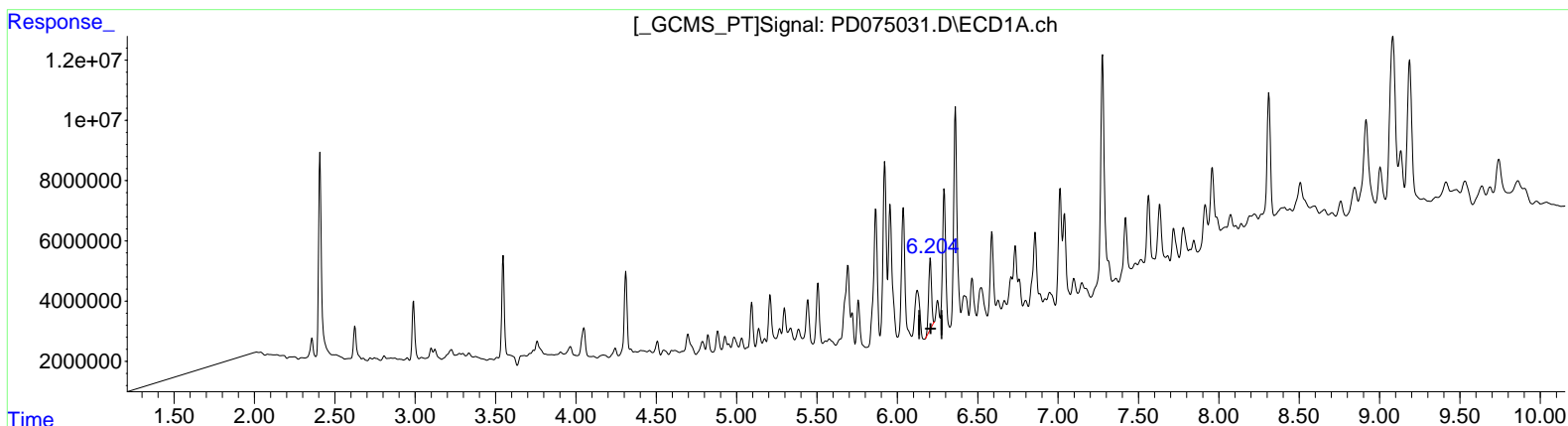
Instrument :  
 ECD\_D  
 ClientSampleId :  
 EW8Y0

Manual Integrations APPROVED

Reviewed By : Abdul Mirza 05/02/2023  
 Supervised By : Ankita Jodhani 05/02/2023

Integration File signal 1: autoint1.e  
 Integration File signal 2: autoint2.e  
 Quant Time: Apr 28 22:16:26 2023  
 Quant Method : Z:\pestpcbsrv\HPCHEM1\ECD\_D\Method\PD042723CLP.M  
 Quant Title : GC Extractables  
 QLast Update : Fri Apr 28 02:34:46 2023  
 Response via : Initial Calibration  
 Integrator: ChemStation

Volume Inj. : 1 µl  
 Signal #1 Phase : ZB-MR1 Signal #2 Phase: ZB-MR2  
 Signal #1 Info : 30M x 0.32mm x 0.5 Signal #2 Info : 30M x 0.32mm x 0.25µm



(12) 4,4'-DDE (B)  
 6.204min 9.950 ng/ml m  
 response 29226418

(12) 4,4'-DDE #2 (B)  
 5.230min 7.075 ng/ml m  
 response 8003333

Data Path : Z:\pestpcbsrv\HPCHEM1\ECD\_D\Data\PD042823\  
 Data File : PD075031.D  
 Signal(s) : Signal #1: ECD1A.ch Signal #2: ECD2B.ch  
 Acq On : 28 Apr 2023 15:31  
 Operator : AR\AJ  
 Sample : 02417-14  
 Misc :  
 ALS Vial : 11 Sample Multiplier: 1

**Instrument :**

ECD\_D

**ClientSampleId :**

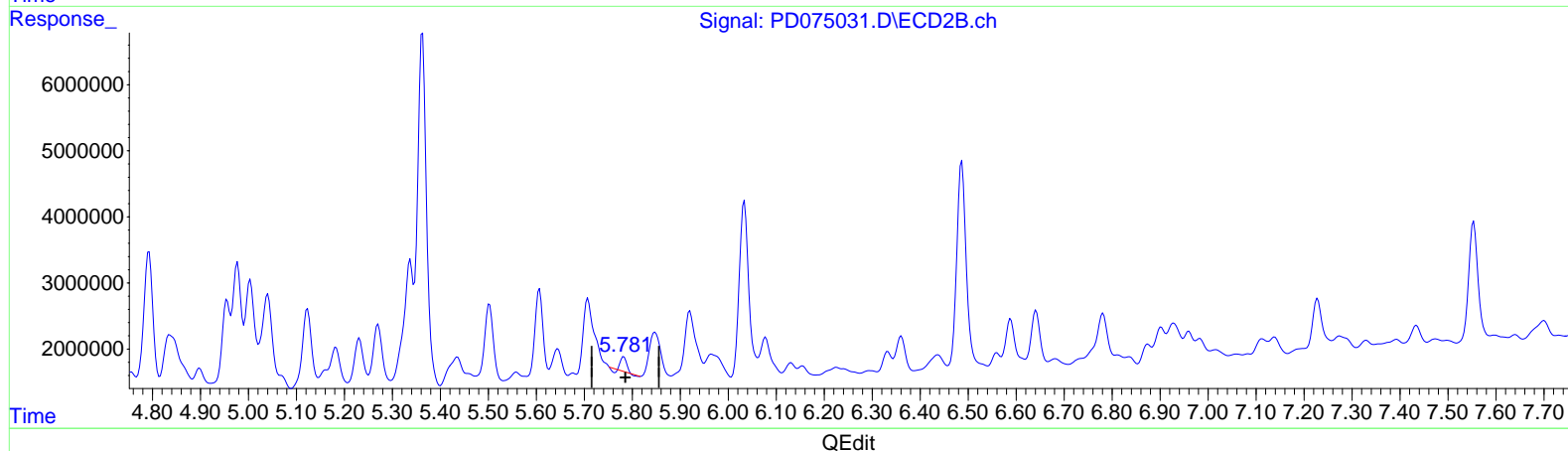
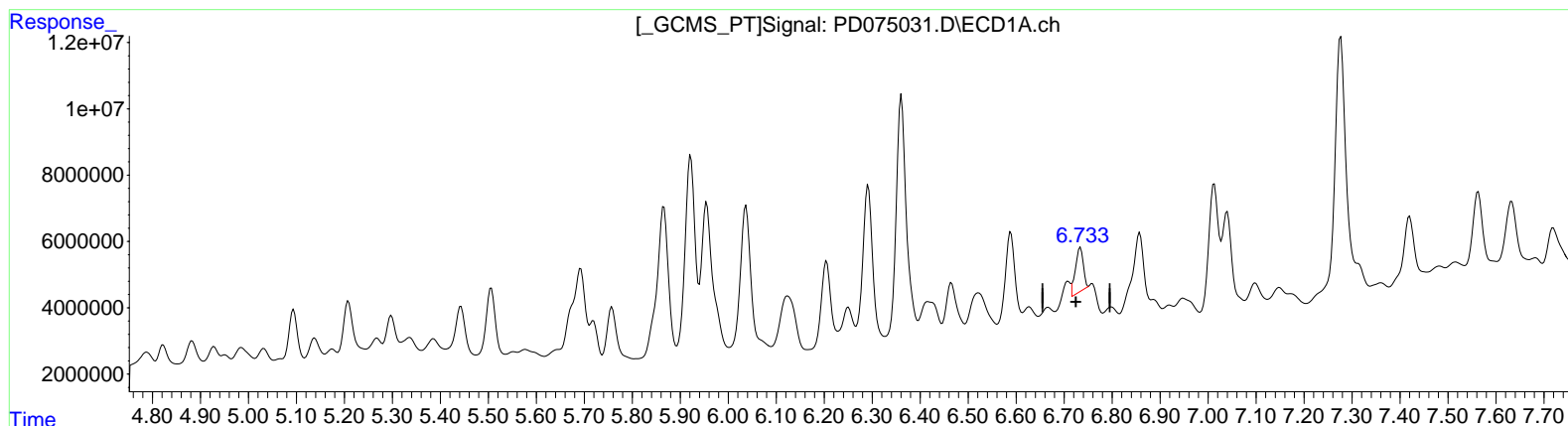
EW8Y0

**Manual IntegrationsAPPROVED**

Reviewed By :Abdul Mirza 05/02/2023  
 Supervised By :Ankita Jodhani 05/02/2023

Integration File signal 1: autoint1.e  
 Integration File signal 2: autoint2.e  
 Quant Time: Apr 28 22:16:26 2023  
 Quant Method : Z:\pestpcbsrv\HPCHEM1\ECD\_D\Method\PD042723CLP.M  
 Quant Title : GC Extractables  
 QLast Update : Fri Apr 28 02:34:46 2023  
 Response via : Initial Calibration  
 Integrator: ChemStation

Volume Inj. : 1 µl  
 Signal #1 Phase : ZB-MR1 Signal #2 Phase: ZB-MR2  
 Signal #1 Info : 30M x 0.32mm x0.5 Signal #2 Info : 30M x 0.32mm x 0.25µm



(16) 4,4'-DDD (A)  
 6.734min 6.433 ng/ml  
 response 15555264

(16) 4,4'-DDD #2 (A)  
 5.782min 1.727 ng/ml  
 response 1668675

Data Path : Z:\pestpcbsrv\HPCHEM1\ECD\_D\Data\PD042823\  
 Data File : PD075031.D  
 Signal(s) : Signal #1: ECD1A.ch Signal #2: ECD2B.ch  
 Acq On : 28 Apr 2023 15:31  
 Operator : AR\AJ  
 Sample : 02417-14  
 Misc :  
 ALS Vial : 11 Sample Multiplier: 1

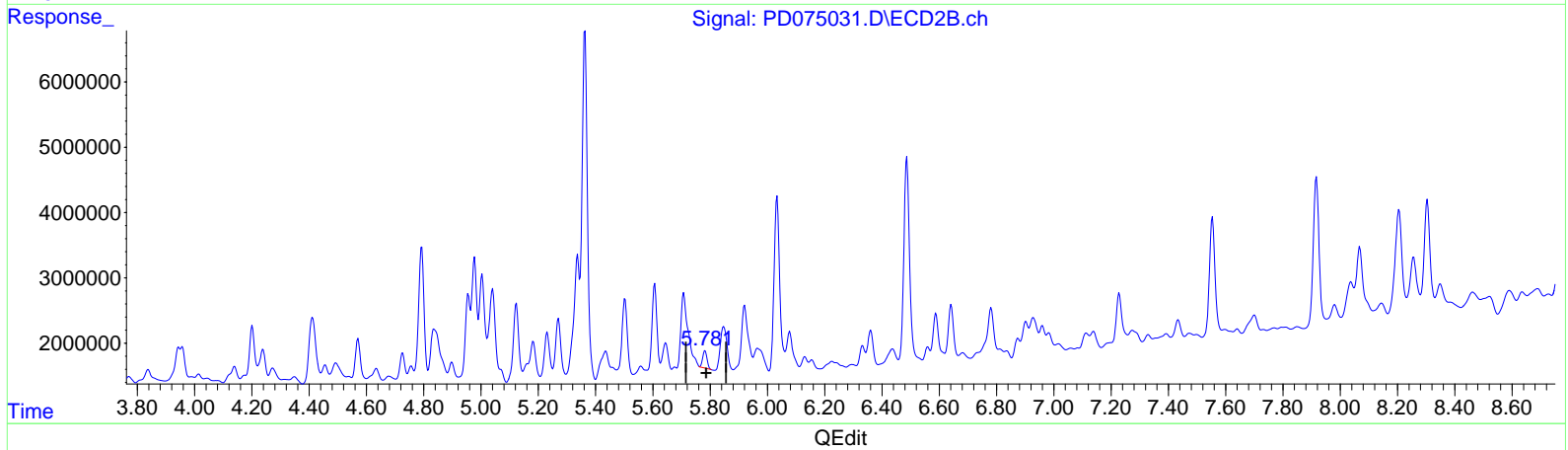
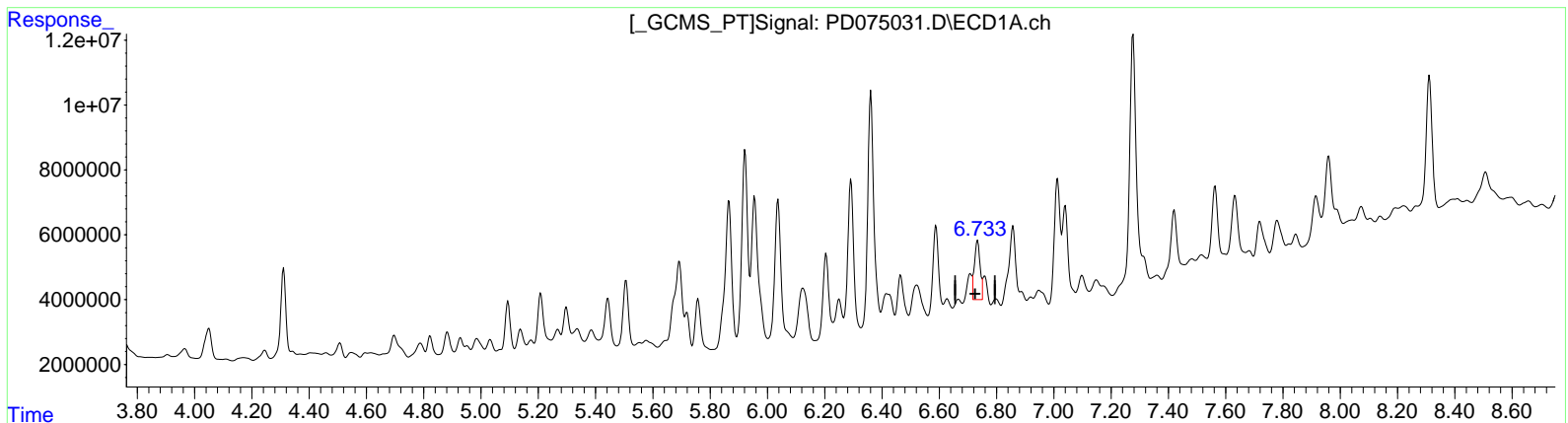
Instrument :  
 ECD\_D  
 ClientSampleId :  
 EW8Y0

Manual Integrations APPROVED

Reviewed By : Abdul Mirza 05/02/2023  
 Supervised By : Ankita Jodhani 05/02/2023

Integration File signal 1: autoint1.e  
 Integration File signal 2: autoint2.e  
 Quant Time: Apr 28 22:16:26 2023  
 Quant Method : Z:\pestpcbsrv\HPCHEM1\ECD\_D\Method\PD042723CLP.M  
 Quant Title : GC Extractables  
 QLast Update : Fri Apr 28 02:34:46 2023  
 Response via : Initial Calibration  
 Integrator: ChemStation

Volume Inj. : 1 µl  
 Signal #1 Phase : ZB-MR1 Signal #2 Phase: ZB-MR2  
 Signal #1 Info : 30M x 0.32mm x 0.5 Signal #2 Info : 30M x 0.32mm x 0.25µm



(16) 4,4'-DDD (A)  
 6.733min 10.499 ng/ml m  
 response 25389065

(16) 4,4'-DDD #2 (A)  
 5.781min 2.904 ng/ml m  
 response 2805927



Data Path : Z:\pestpcbsrv\HPCHEM1\ECD\_D\Data\PD042823\  
 Data File : PD075031.D  
 Signal(s) : Signal #1: ECD1A.ch Signal #2: ECD2B.ch  
 Acq On : 28 Apr 2023 15:31  
 Operator : AR\AJ  
 Sample : 02417-14  
 Misc :  
 ALS Vial : 11 Sample Multiplier: 1

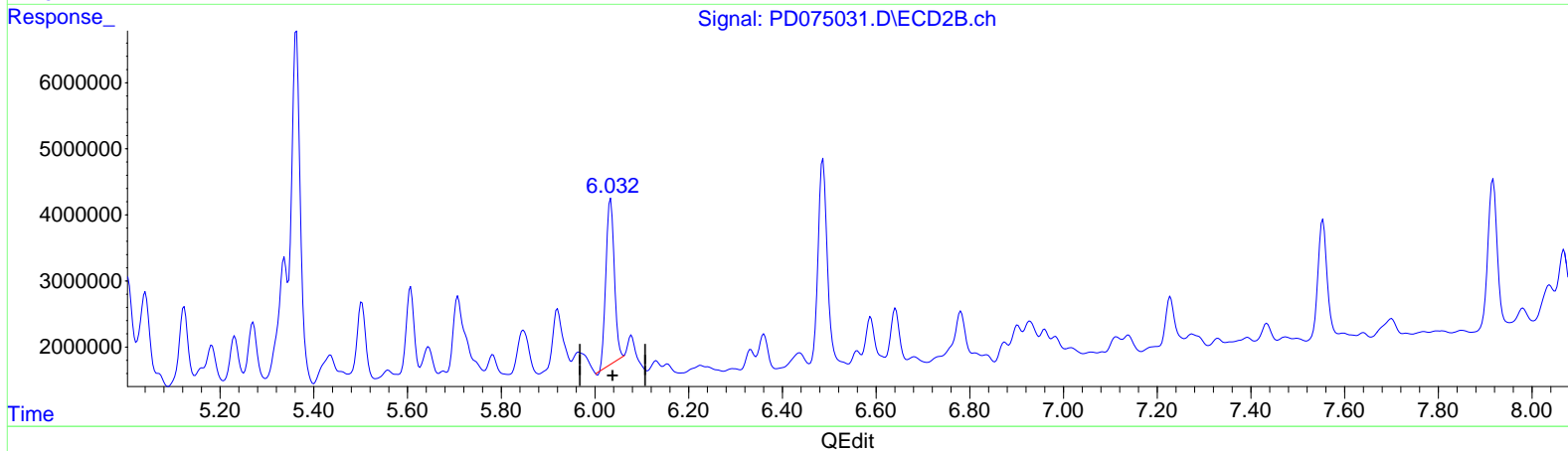
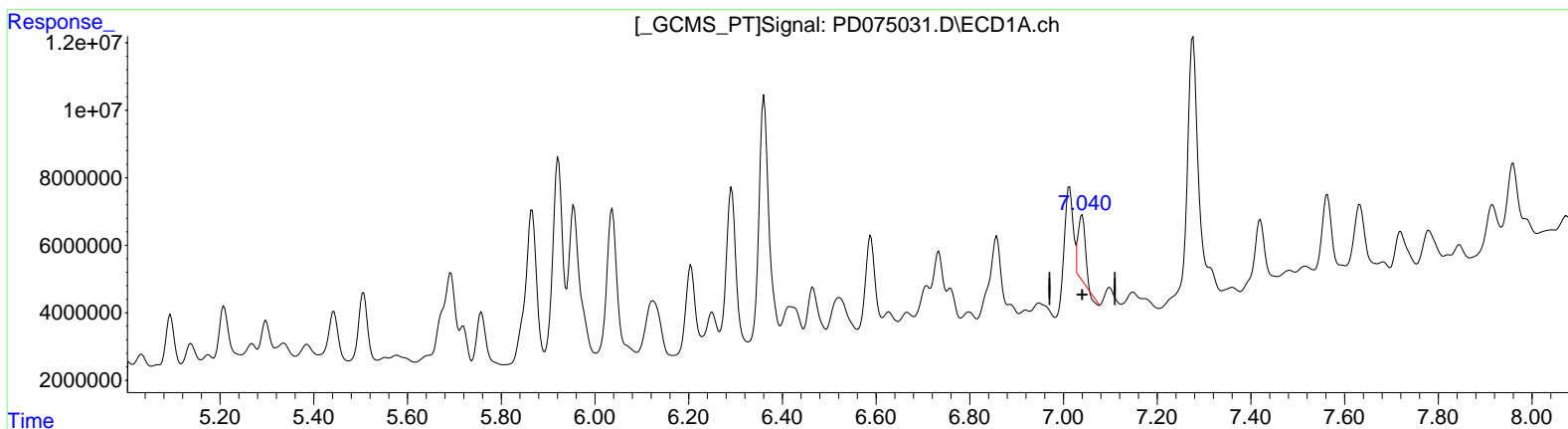
Instrument :  
 ECD\_D  
 ClientSampleId :  
 EW8Y0

Manual Integrations APPROVED

Reviewed By : Abdul Mirza 05/02/2023  
 Supervised By : Ankita Jodhani 05/02/2023

Integration File signal 1: autoint1.e  
 Integration File signal 2: autoint2.e  
 Quant Time: Apr 28 22:16:26 2023  
 Quant Method : Z:\pestpcbsrv\HPCHEM1\ECD\_D\Method\PD042723CLP.M  
 Quant Title : GC Extractables  
 QLast Update : Fri Apr 28 02:34:46 2023  
 Response via : Initial Calibration  
 Integrator: ChemStation

Volume Inj. : 1 µl  
 Signal #1 Phase : ZB-MR1 Signal #2 Phase: ZB-MR2  
 Signal #1 Info : 30M x 0.32mm x 0.5 Signal #2 Info : 30M x 0.32mm x 0.25µm



(17) 4,4'-DDT (MA)  
 7.040min 8.136 ng/ml  
 response 20441989

(17) 4,4'-DDT #2 (MA)  
 6.034min 31.440 ng/ml  
 response 31188167

Data Path : Z:\pestpcbsrv\HPCHEM1\ECD\_D\Data\PD042823\  
 Data File : PD075031.D  
 Signal(s) : Signal #1: ECD1A.ch Signal #2: ECD2B.ch  
 Acq On : 28 Apr 2023 15:31  
 Operator : AR\AJ  
 Sample : 02417-14  
 Misc :  
 ALS Vial : 11 Sample Multiplier: 1

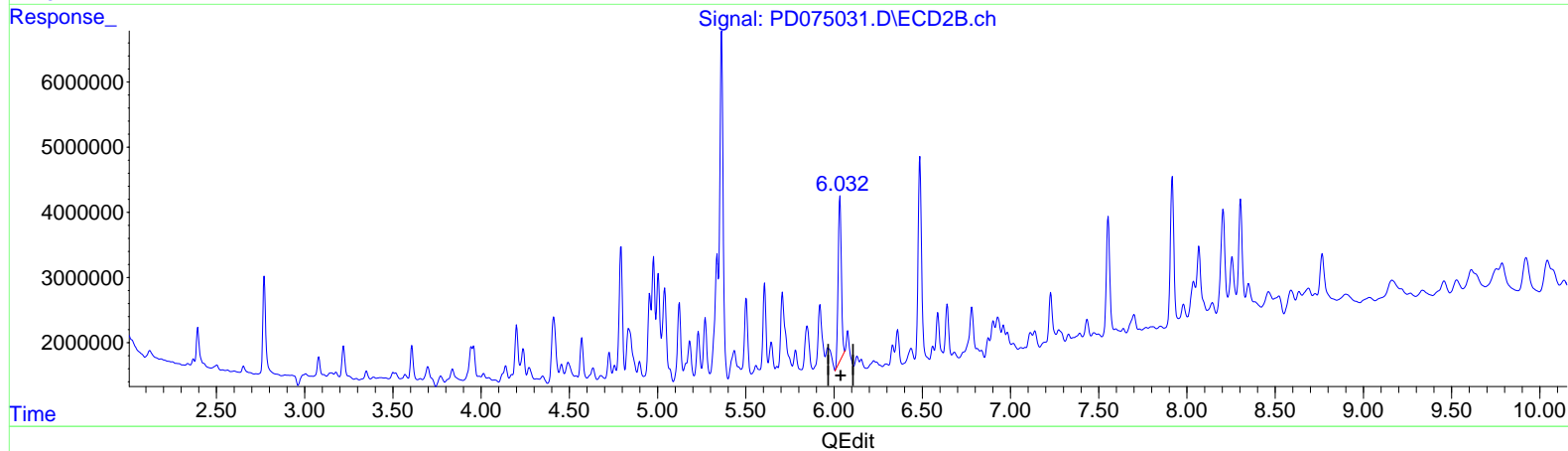
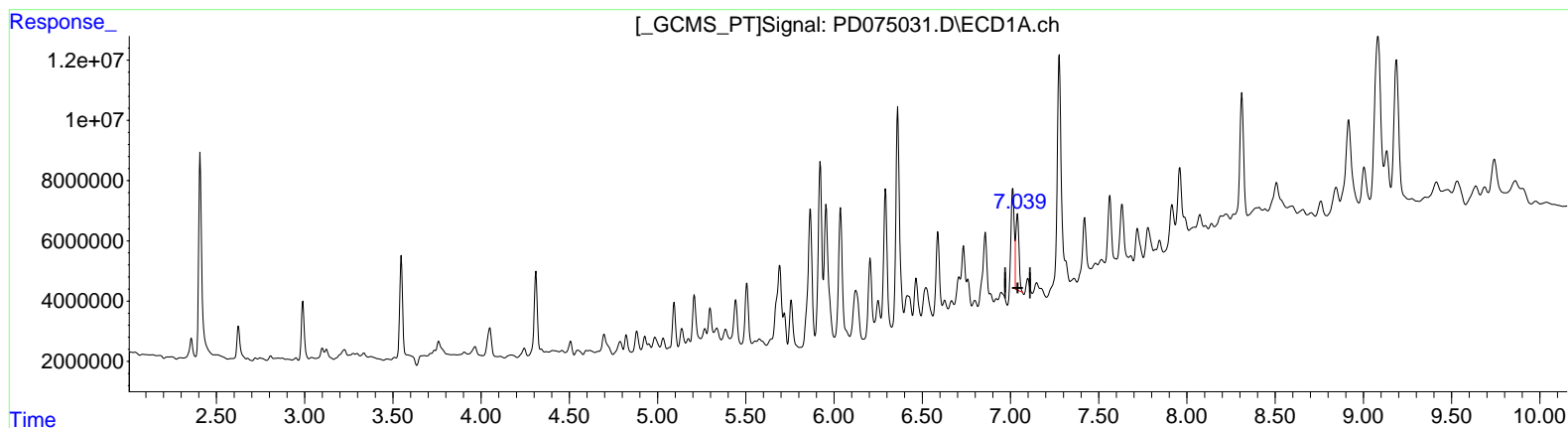
Instrument :  
 ECD\_D  
 ClientSampleId :  
 EW8Y0

Manual Integrations APPROVED

Reviewed By : Abdul Mirza 05/02/2023  
 Supervised By : Ankita Jodhani 05/02/2023

Integration File signal 1: autoint1.e  
 Integration File signal 2: autoint2.e  
 Quant Time: Apr 28 22:16:26 2023  
 Quant Method : Z:\pestpcbsrv\HPCHEM1\ECD\_D\Method\PD042723CLP.M  
 Quant Title : GC Extractables  
 QLast Update : Fri Apr 28 02:34:46 2023  
 Response via : Initial Calibration  
 Integrator: ChemStation

Volume Inj. : 1 µl  
 Signal #1 Phase : ZB-MR1 Signal #2 Phase: ZB-MR2  
 Signal #1 Info : 30M x 0.32mm x 0.5 Signal #2 Info : 30M x 0.32mm x 0.25µm



(17) 4,4'-DDT (MA)  
 7.039min 12.200 ng/ml m  
 response 30654726

(17) 4,4'-DDT #2 (MA)  
 6.032min 32.326 ng/ml m  
 response 32067183

Data Path : Z:\pestpcbsrv\HPCHEM1\ECD\_D\Data\PD042823\  
 Data File : PD075031.D  
 Signal(s) : Signal #1: ECD1A.ch Signal #2: ECD2B.ch  
 Acq On : 28 Apr 2023 15:31  
 Operator : AR\AJ  
 Sample : 02417-14  
 Misc :  
 ALS Vial : 11 Sample Multiplier: 1

**Instrument :**

ECD\_D

**ClientSampleId :**

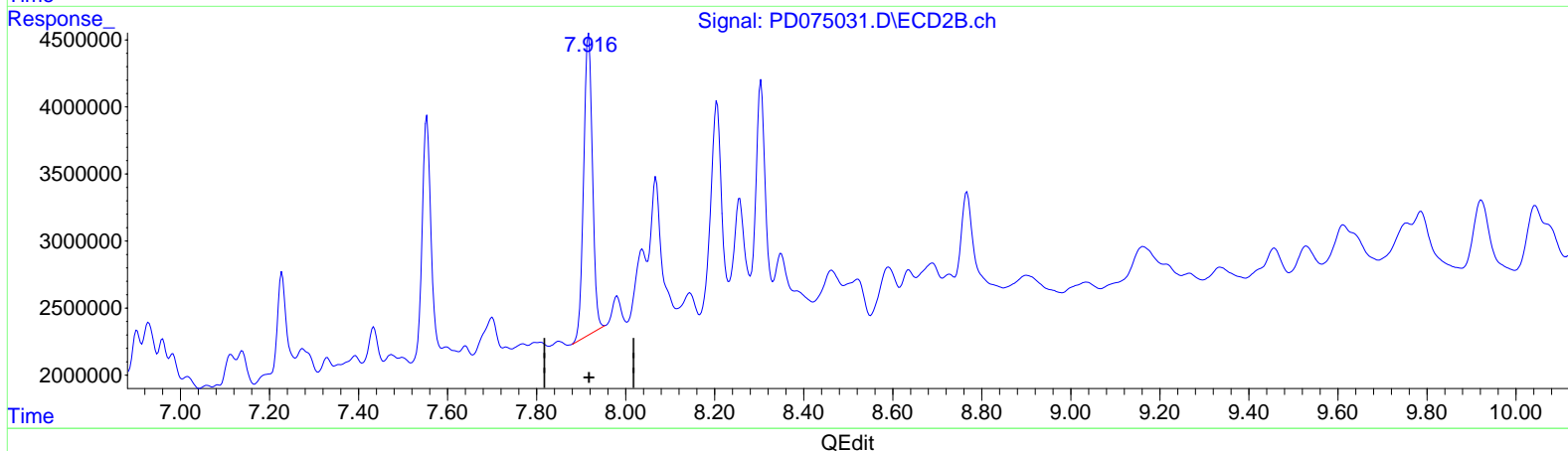
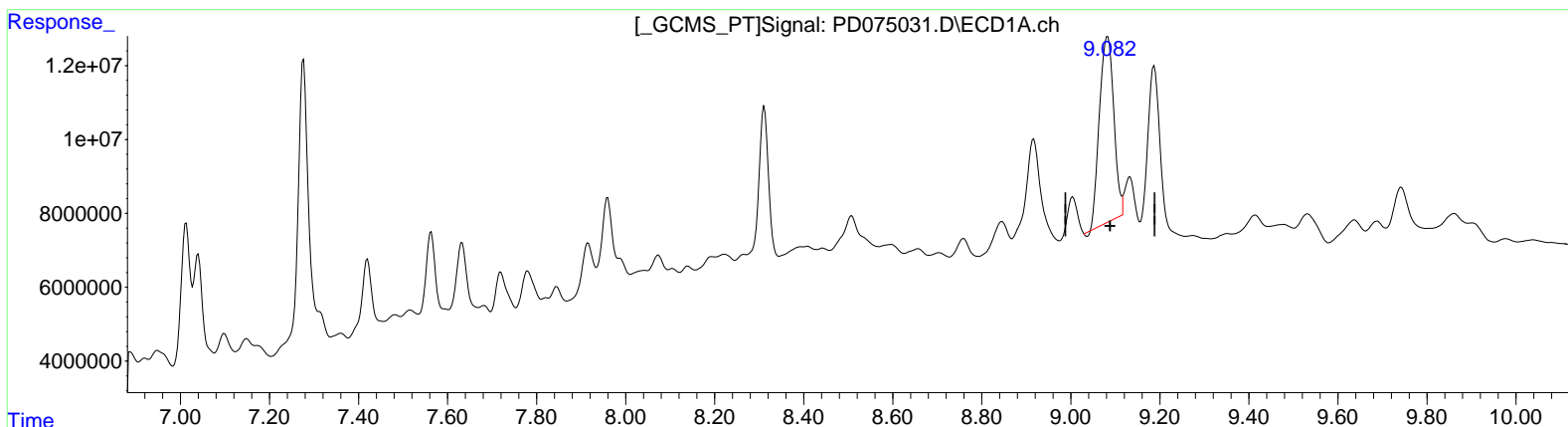
EW8Y0

**Manual IntegrationsAPPROVED**

Reviewed By :Abdul Mirza 05/02/2023  
 Supervised By :Ankita Jodhani 05/02/2023

Integration File signal 1: autoint1.e  
 Integration File signal 2: autoint2.e  
 Quant Time: Apr 28 22:16:26 2023  
 Quant Method : Z:\pestpcbsrv\HPCHEM1\ECD\_D\Method\PD042723CLP.M  
 Quant Title : GC Extractables  
 QLast Update : Fri Apr 28 02:34:46 2023  
 Response via : Initial Calibration  
 Integrator: ChemStation

Volume Inj. : 1 µl  
 Signal #1 Phase : ZB-MR1 Signal #2 Phase: ZB-MR2  
 Signal #1 Info : 30M x 0.32mm x0.5 Signal #2 Info : 30M x 0.32mm x 0.25µm



(27) Decachlorobiphenyl (SA)

9.083min 46.963 ng/ml

response 112165402

(27) Decachlorobiphenyl #2 (SA)

7.917min 31.933 ng/ml

response 30675247

Data Path : Z:\pestpcbsrv\HPCHEM1\ECD\_D\Data\PD042823\  
 Data File : PD075031.D  
 Signal(s) : Signal #1: ECD1A.ch Signal #2: ECD2B.ch  
 Acq On : 28 Apr 2023 15:31  
 Operator : AR\AJ  
 Sample : 02417-14  
 Misc :  
 ALS Vial : 11 Sample Multiplier: 1

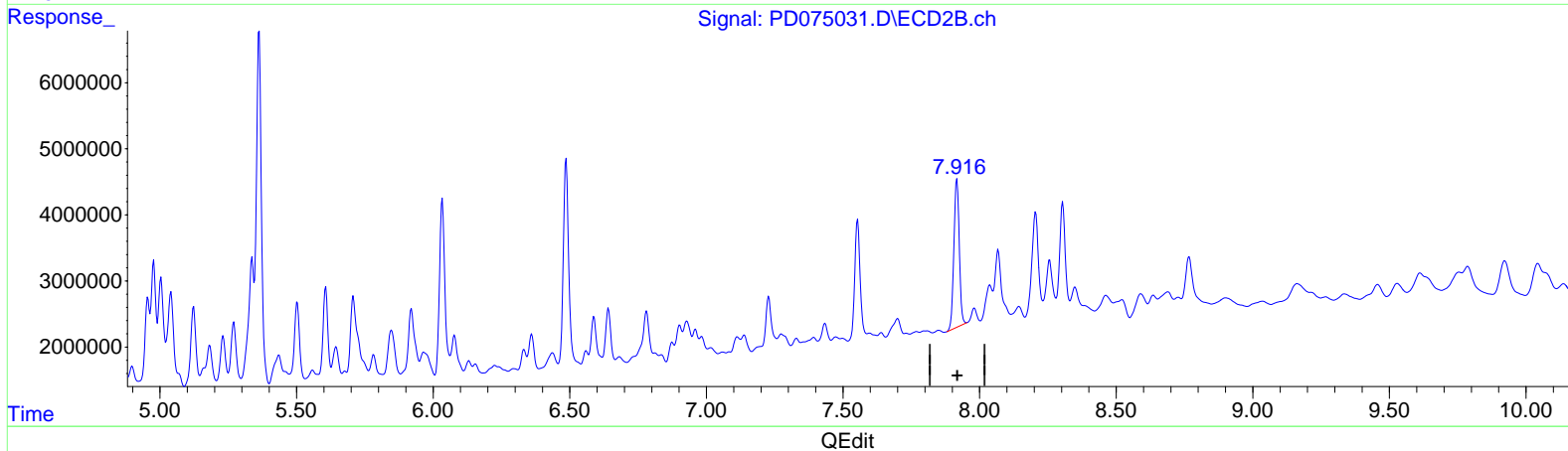
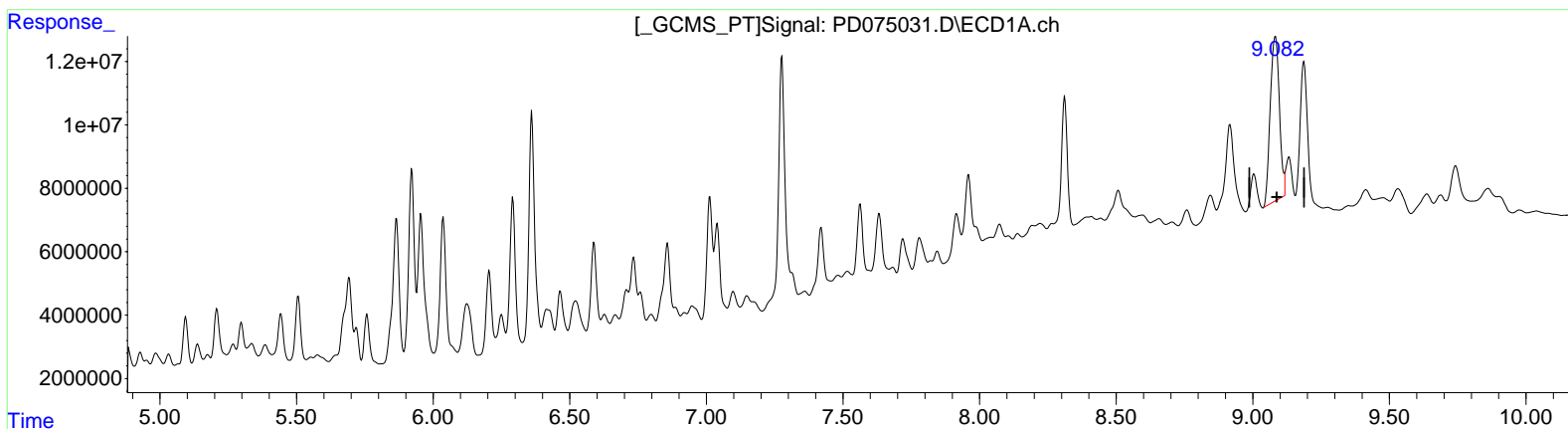
Instrument :  
 ECD\_D  
 ClientSampleId :  
 EW8Y0

Manual Integrations APPROVED

Reviewed By : Abdul Mirza 05/02/2023  
 Supervised By : Ankita Jodhani 05/02/2023

Integration File signal 1: autoint1.e  
 Integration File signal 2: autoint2.e  
 Quant Time: Apr 28 22:16:26 2023  
 Quant Method : Z:\pestpcbsrv\HPCHEM1\ECD\_D\Method\PD042723CLP.M  
 Quant Title : GC Extractables  
 QLast Update : Fri Apr 28 02:34:46 2023  
 Response via : Initial Calibration  
 Integrator: ChemStation

Volume Inj. : 1 µl  
 Signal #1 Phase : ZB-MR1 Signal #2 Phase: ZB-MR2  
 Signal #1 Info : 30M x 0.32mm x 0.5 Signal #2 Info : 30M x 0.32mm x 0.25µm



(27) Decachlorobiphenyl (SA)  
 9.082min 50.827 ng/ml m  
 response 121395689

(27) Decachlorobiphenyl #2 (SA)  
 7.917min 31.933 ng/ml  
 response 30675247