

Data Path : Z:\pestpcbsrv\HPCHEM1\ECD_D\Data\PD042823\
 Data File : PD075046.D
 Signal(s) : Signal #1: ECD1A.ch Signal #2: ECD2B.ch
 Acq On : 28 Apr 2023 21:44
 Operator : AR\AJ
 Sample : PEM061
 Misc :
 ALS Vial : 3 Sample Multiplier: 1

Instrument :
 ECD_D
ClientSampleId :
 PEM072

Manual Integrations
APPROVED
 Reviewed By :Abdul Mirza 05/01/2023
 Supervised By :Ankita Jodhani 05/02/2023

Integration File signal 1: autoint1.e
 Integration File signal 2: autoint2.e
 Quant Time: Apr 29 08:49:19 2023
 Quant Method : Z:\pestpcbsrv\HPCHEM1\ECD_D\Method\PD042723CLP.M
 Quant Title : GC Extractables
 QLast Update : Fri Apr 28 02:34:46 2023
 Response via : Initial Calibration
 Integrator: ChemStation

Volume Inj. : 1 µl
 Signal #1 Phase : ZB-MR1 Signal #2 Phase: ZB-MR2
 Signal #1 Info : 30M x 0.32mm x0.5 Signal #2 Info : 30M x 0.32mm x 0.25µm

Compound	RT#1	RT#2	Resp#1	Resp#2	ng/ml	ng/ml

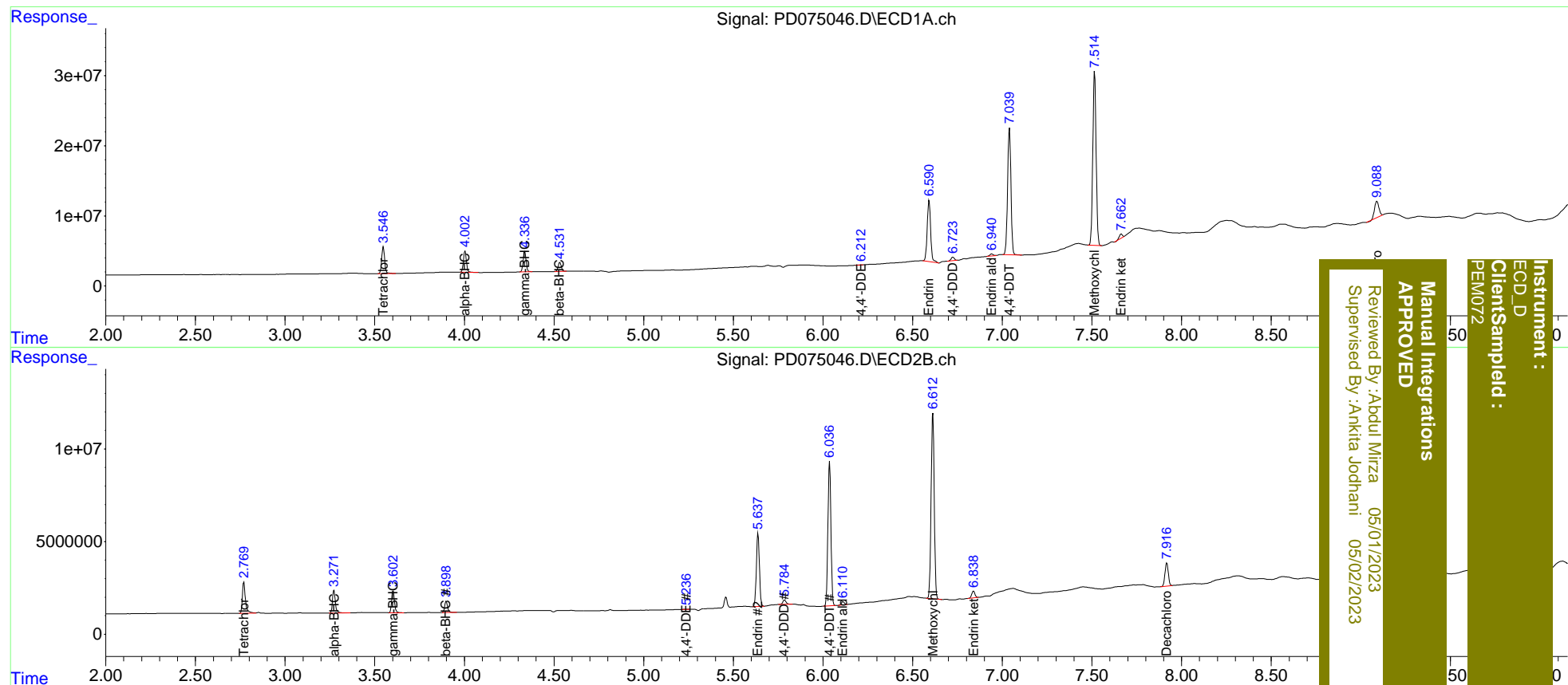
System Monitoring Compounds						
1) SA Tetrachlo...	3.548	2.770	44922736	20221809	20.111	19.506
27) SA Decachlor...	9.089	7.918	37901333	15894523	15.869	16.546
Target Compounds						
2) A alpha-BHC	4.004	3.273	35149205	14155884	9.578	9.831
3) MA gamma-BHC...	4.337	3.603	33137638	13322675	9.692	9.574
6) B beta-BHC	4.533	3.899	15240235	6826650	10.339	10.031
12) B 4,4'-DDE	6.212	5.236	321139	122788	0.109m	0.109m
14) MA Endrin	6.592	5.638	117.2E6	46541811	43.267	42.110
16) A 4,4'-DDD	6.725	5.786	6809380	3113683	2.816	3.223
17) MA 4,4'-DDT	7.040	6.037	234.6E6	91704025	93.380	92.444
18) B Endrin al...	6.940	6.112	4137638	1993194	1.849m	2.244
20) A Methoxychlor	7.515	6.613	317.7E6	121.9E6	220.345	220.734
21) B Endrin ke...	7.664	6.840	5963298	4489097	2.061	3.765 #

(f)=RT Delta > 1/2 Window (#)=Amounts differ by > 25% (m)=manual int.

Data Path : Z:\pestpcbsrv\HPCHEM1\ECD_D\Data\PD042823\
 Data File : PD075046.D
 Signal(s) : Signal #1: ECD1A.ch Signal #2: ECD2B.ch
 Acq On : 28 Apr 2023 21:44
 Operator : AR\AJ
 Sample : PEM061
 Misc :
 ALS Vial : 3 Sample Multiplier: 1

Integration File signal 1: autoint1.e
 Integration File signal 2: autoint2.e
 Quant Time: Apr 29 08:49:19 2023
 Quant Method : Z:\pestpcbsrv\HPCHEM1\ECD_D\Method\PD042723CLP.M
 Quant Title : GC Extractables
 QLast Update : Fri Apr 28 02:34:46 2023
 Response via : Initial Calibration
 Integrator: ChemStation

Volume Inj. : 1 µl
 Signal #1 Phase : ZB-MR1 Signal #2 Phase: ZB-MR2
 Signal #1 Info : 30M x 0.32mm x0.5 Signal #2 Info : 30M x 0.32mm x 0.25µm



Instrument : ECD_D
 Client Sampled : PEM072
 Manual Integrations APPROVED
 Reviewed By : Abdul Mirza 05/01/2023
 Supervised By : Ankita Jodhani 05/02/2023