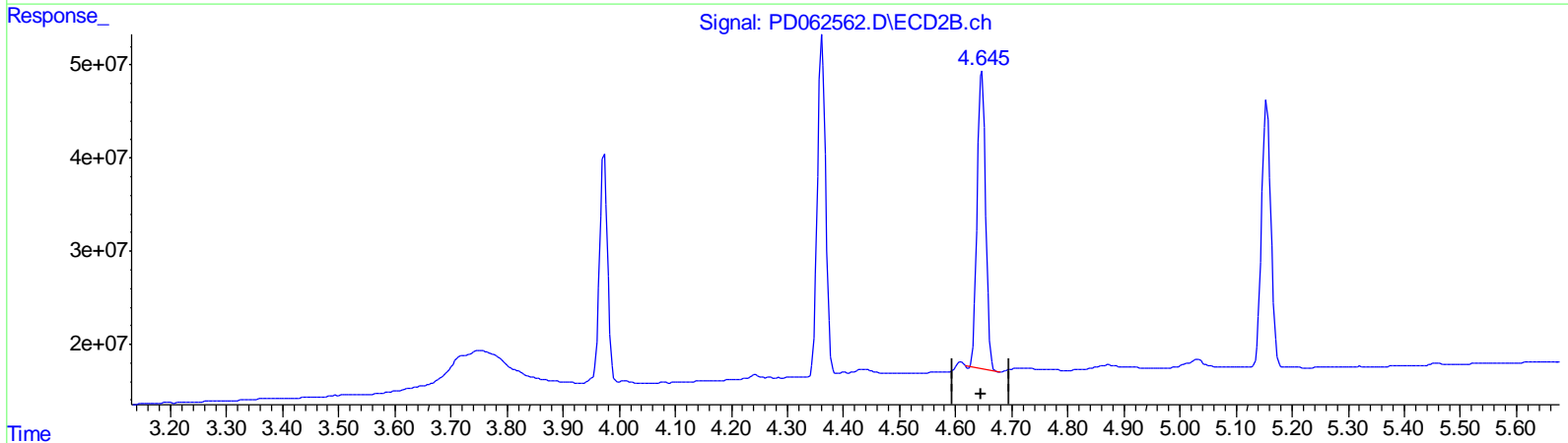
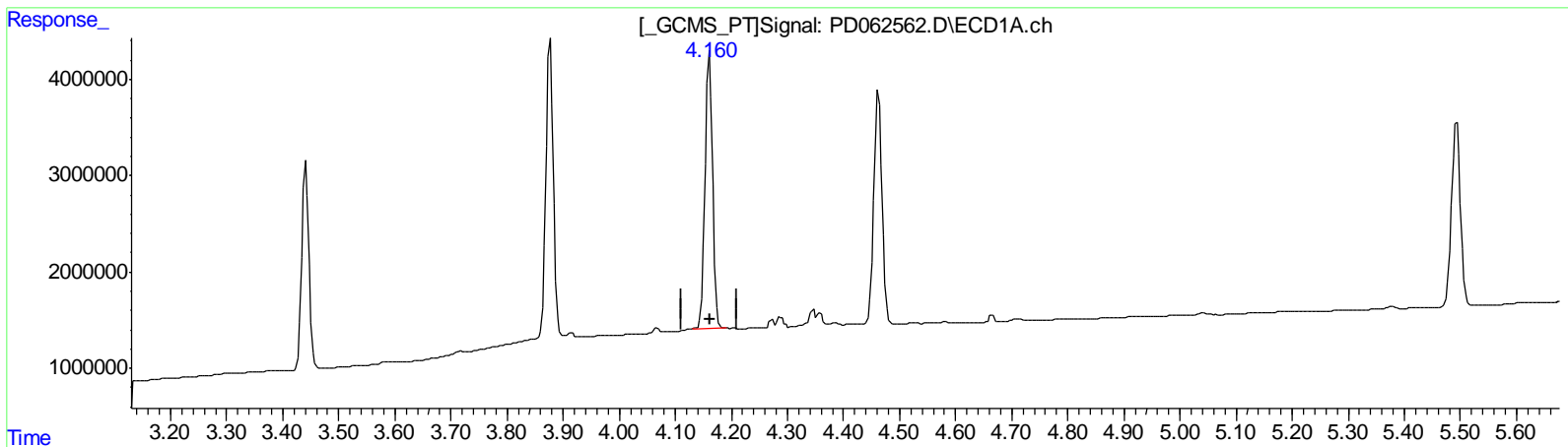


Data Path : Z:\pestpcbsrv\HPCHEM1\ECD_D\Data\PD042921\
 Data File : PD062562.D
 Signal(s) : Signal #1: ECD1A.ch Signal #2: ECD2B.ch
 Acq On : 29 Apr 2021 19:31
 Operator : AR\AJ
 Sample : INDA331
 Misc :
 ALS Vial : 43 Sample Multiplier: 1

Integration File signal 1: autoint1.e
 Integration File signal 2: autoint2.e
 Quant Time: Apr 30 03:01:30 2021
 Quant Method : Z:\pestpcbsrv\HPCHEM1\ECD_D\Method\PD042921CLP.M
 Quant Title : GC Extractables
 QLast Update : Fri Apr 30 02:49:51 2021
 Response via : Initial Calibration
 Integrator: ChemStation

Volume Inj. : 1 µl
 Signal #1 Phase : ZB-MR2 Signal #2 Phase: ZB-MR1
 Signal #1 Info : 30M x 0.32mm x0.2 Signal #2 Info : 30M x 0.32mm x 0.50µm



QEdit

(3) gamma-BHC (Lindane) (MA)

4.161min 19.814 ng/ml

response 26468130

(3) gamma-BHC (Lindane) #2 (MA)

4.647min 19.136 ng/ml

response 330573038

(+) = Expected Retention Time