

Data Path : Z:\pestpcbsrv\HPCHEM1\ECD_D\Data\PD042921\
 Data File : PD062558.D
 Signal(s) : Signal #1: ECD1A.ch Signal #2: ECD2B.ch
 Acq On : 29 Apr 2021 18:35
 Operator : AR\AJ
 Sample : M2161-08
 Misc :
 ALS Vial : 42 Sample Multiplier: 1

Instrument :
 ECD_D
 ClientSampled :

Integration File signal 1: autoint1.e
 Integration File signal 2: autoint2.e
 Quant Time: Apr 30 03:00:29 2021
 Quant Method : Z:\pestpcbsrv\HPCHEM1\ECD_D\Method\PD042921CLP.M
 Quant Title : GC Extractables
 QLast Update : Fri Apr 30 02:49:51 2021
 Response via : Initial Calibration
 Integrator: ChemStation

Volume Inj. : 1 µl
 Signal #1 Phase : ZB-MR2 Signal #2 Phase: ZB-MR1
 Signal #1 Info : 30M x 0.32mm x0.2 Signal #2 Info : 30M x 0.32mm x 0.50µm

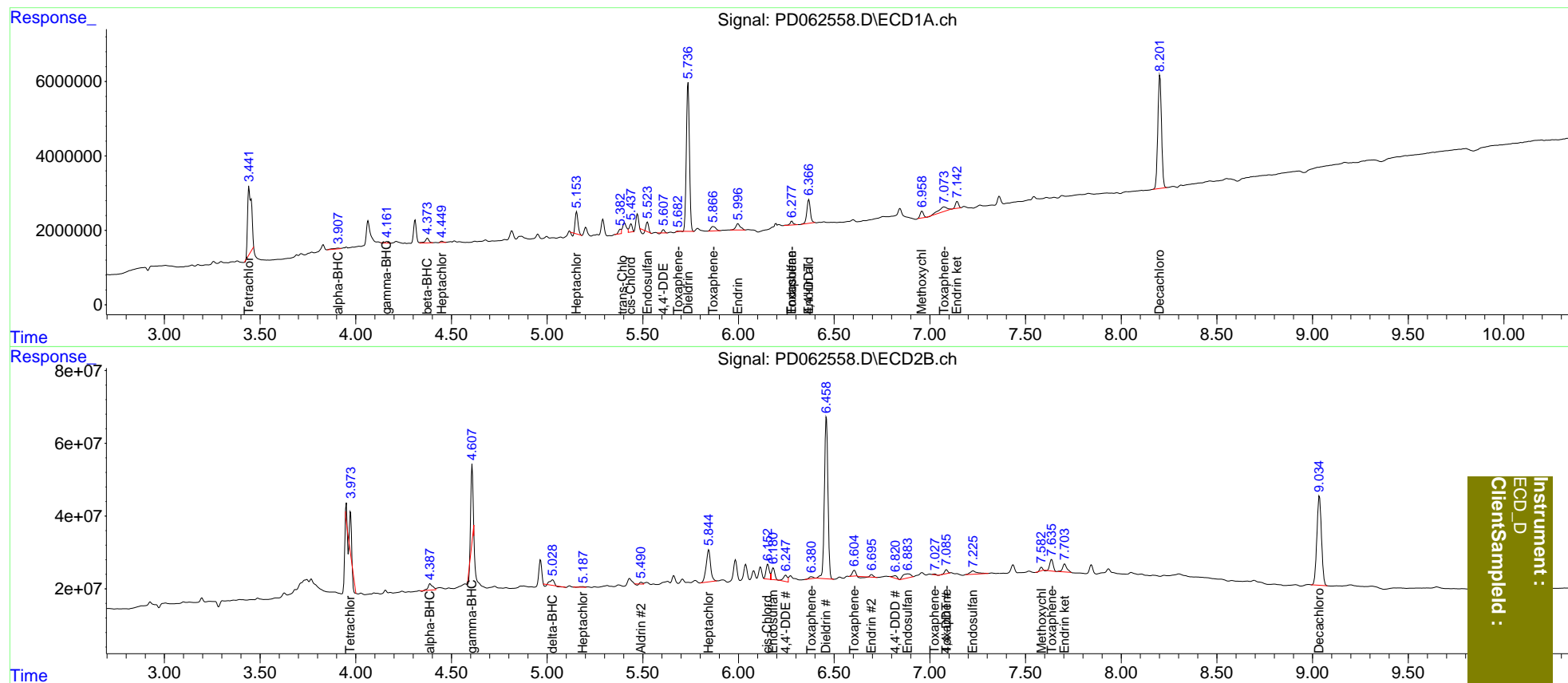
Compound	RT#1	RT#2	Resp#1	Resp#2	ng/ml	ng/ml
System Monitoring Compounds						
1) SA Tetrachlo...	3.442	3.973	25690170	15124802	26.833	1.246 #
27) SA Decachlor...	8.202	9.036	40619285	408.9E6	37.842	37.465
Target Compounds						
2) A alpha-BHC	3.908f	4.388f	524391	29467948	0.375	1.558 #
3) MA gamma-BHC...	4.162	4.608f	350604	156.5E6	0.262	9.058 #
4) MA Heptachlor	4.450	5.188f	340692	2804950	0.265	0.161 #
5) MB Aldrin	0.000	5.491f	0	3576570	N.D.	0.207
6) B beta-BHC	4.375f	4.786f	1765632	397549	2.844	<MDL #
7) B delta-BHC	4.623	5.029	107745	19555765	<MDL	1.054 #
8) B Heptachlo...	5.154	5.845	5666013	142.1E6	4.624	8.860 #
9) A Endosulfan I	5.524	6.182	1702232	38965537	1.522	2.657 #
10) B trans-Chl...	5.384	6.080	1067321	-9623480	0.851	N.D. #
11) B cis-Chlor...	5.439	6.153	2324229	49349959	1.893	3.179 #
12) B 4,4'-DDE	5.608	6.247f	669800	25925565	0.541	1.655 #
13) MA Dieldrin	5.737	6.460	45030529	575.8E6	35.724	37.131
14) MA Endrin	5.998	6.696	2843855	1258919	2.688	0.101 #
15) B Endosulfa...	6.278	6.886	1269152	32369227	1.224	2.586 #
16) A 4,4'-DDD	0.000	6.820	0	11669496	N.D.	0.939
17) MA 4,4'-DDT	6.368	7.087	8277273	11833940	8.837	0.997 #
18) B Endrin al...	6.368f	7.000	8277273	-4299284	9.277	N.D. #
19) B Endosulfa...	6.655	7.226	32039	23746359	<MDL	1.861 #
20) A Methoxychlor	6.959f	7.583	2181488	9186445	4.089	1.621 #
21) B Endrin ke...	7.143	7.705	2063745	33462859	1.761	2.719 #
22) Toxaphene-1	5.683	6.381	106735	8063868	14.318	121.367 #
23) Toxaphene-2	5.867	6.606	2127634	19443101	289.098	233.468
25) Toxaphene-4	6.278	7.087	1269152	11833940	65.899	37.168 #
26) Toxaphene-5	7.075	7.637	4154581	37843002	193.531	280.522 #

(f)=RT Delta > 1/2 Window (#)=Amounts differ by > 25% (m)=manual int.

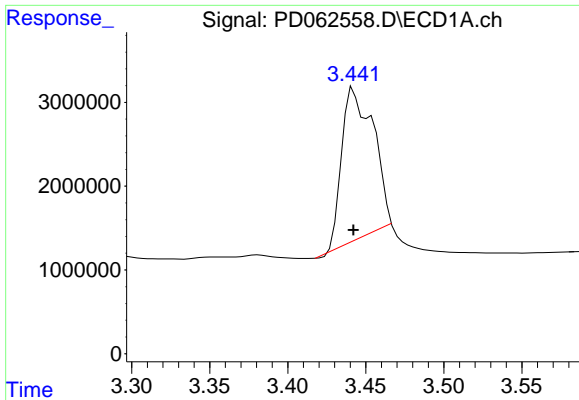
Data Path : Z:\pestpcbsrv\HPCHEM1\ECD_D\Data\PD042921\
 Data File : PD062558.D
 Signal(s) : Signal #1: ECD1A.ch Signal #2: ECD2B.ch
 Acq On : 29 Apr 2021 18:35
 Operator : AR\AJ
 Sample : M2161-08
 Misc :
 ALS Vial : 42 Sample Multiplier: 1

Integration File signal 1: autoint1.e
 Integration File signal 2: autoint2.e
 Quant Time: Apr 30 03:00:29 2021
 Quant Method : Z:\pestpcbsrv\HPCHEM1\ECD_D\Method\PD042921CLP.M
 Quant Title : GC Extractables
 QLast Update : Fri Apr 30 02:49:51 2021
 Response via : Initial Calibration
 Integrator: ChemStation

Volume Inj. : 1 µl
 Signal #1 Phase : ZB-MR2 Signal #2 Phase: ZB-MR1
 Signal #1 Info : 30M x 0.32mm x0.2 Signal #2 Info : 30M x 0.32mm x 0.50µm

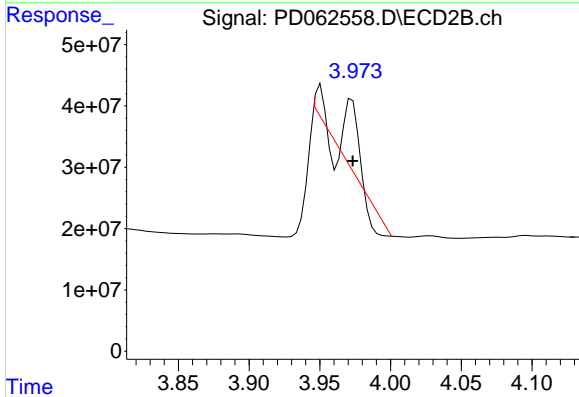


Instrument :
 ECD_D
 ClientSampleId :

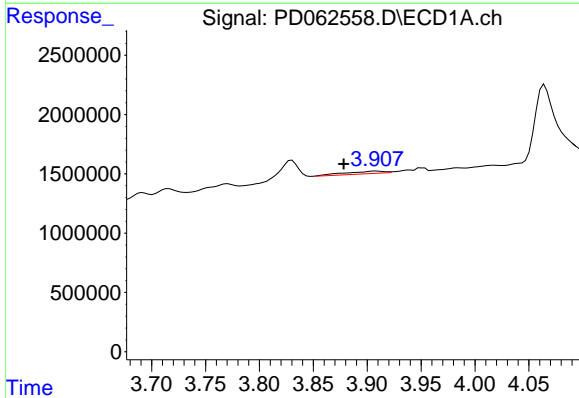


#1 Tetrachloro-m-xylene
 R.T.: 3.442 min
 Delta R.T.: 0.000 min
 Response: 25690170
 Conc: 26.83 ng/ml

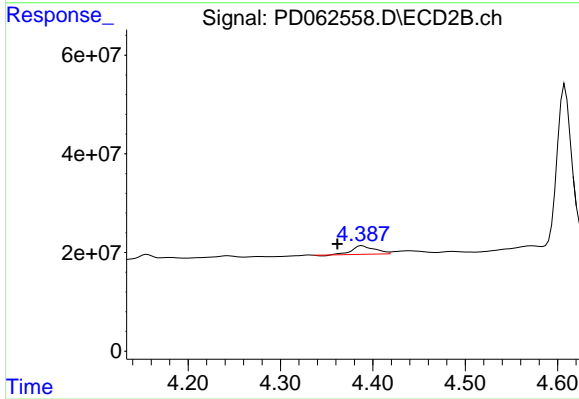
Instrument :
 ECD_D
 ClientSampleId :



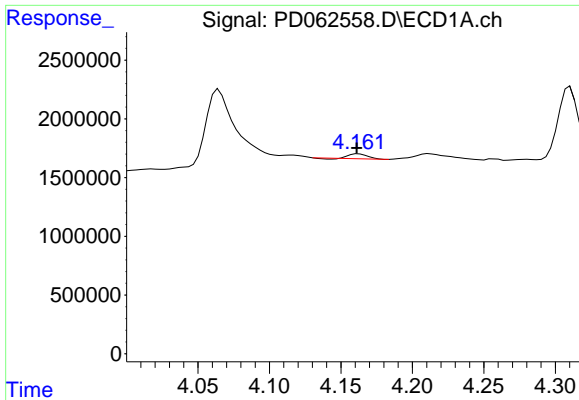
#1 Tetrachloro-m-xylene
 R.T.: 3.973 min
 Delta R.T.: 0.000 min
 Response: 15124802
 Conc: 1.25 ng/ml



#2 alpha-BHC
 R.T.: 3.908 min
 Delta R.T.: 0.030 min
 Response: 524391
 Conc: 0.37 ng/ml

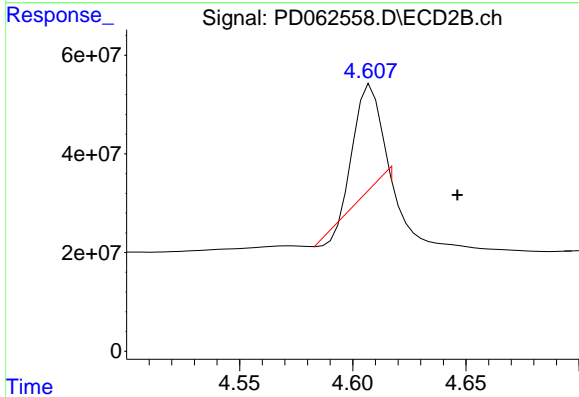


#2 alpha-BHC
 R.T.: 4.388 min
 Delta R.T.: 0.027 min
 Response: 29467948
 Conc: 1.56 ng/ml

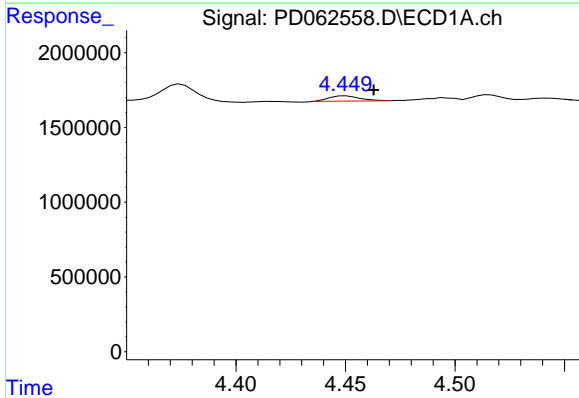


#3 gamma-BHC (Lindane)
 R.T.: 4.162 min
 Delta R.T.: 0.001 min
 Response: 350604
 Conc: 0.26 ng/ml

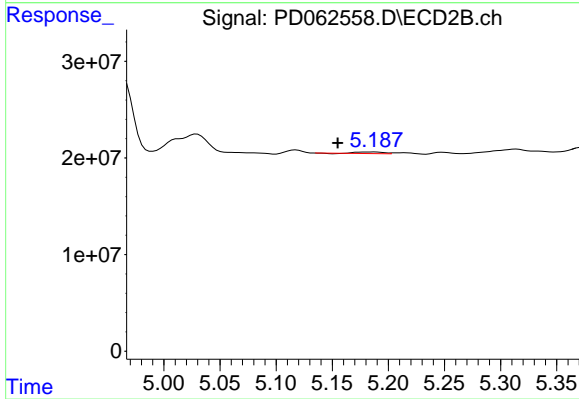
Instrument :
 ECD_D
 ClientSampleId :



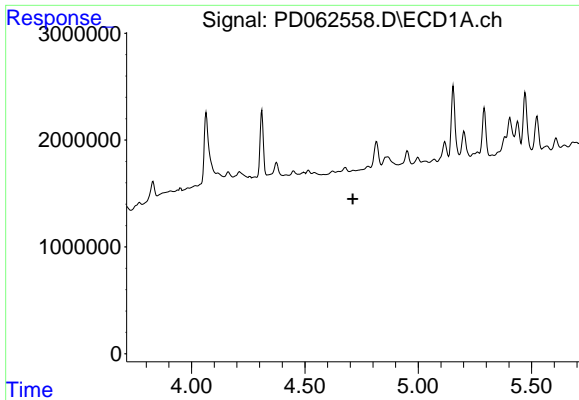
#3 gamma-BHC (Lindane)
 R.T.: 4.608 min
 Delta R.T.: -0.038 min
 Response: 156482216
 Conc: 9.06 ng/ml



#4 Heptachlor
 R.T.: 4.450 min
 Delta R.T.: -0.013 min
 Response: 340692
 Conc: 0.27 ng/ml

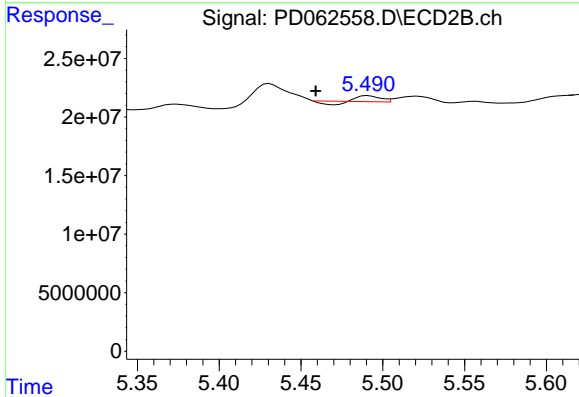


#4 Heptachlor
 R.T.: 5.188 min
 Delta R.T.: 0.033 min
 Response: 2804950
 Conc: 0.16 ng/ml

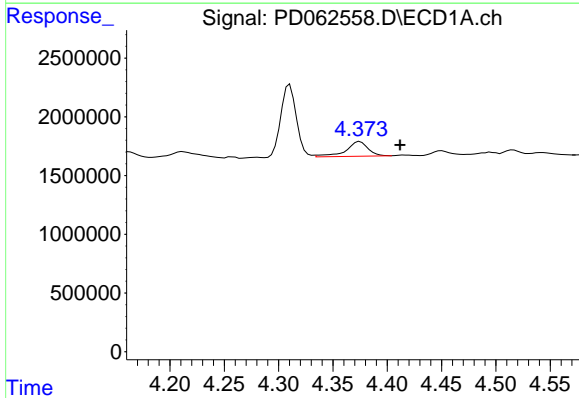


#5 Aldrin
 R.T.: 0.000 min
 Exp R.T.: 4.711 min
 Response: 0
 Conc: N.D.

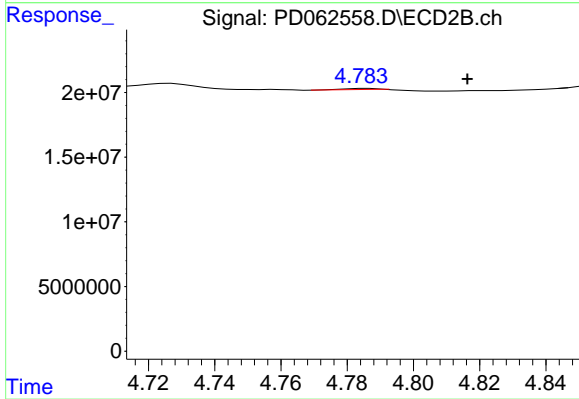
Instrument :
 ECD_D
 ClientSampleId :



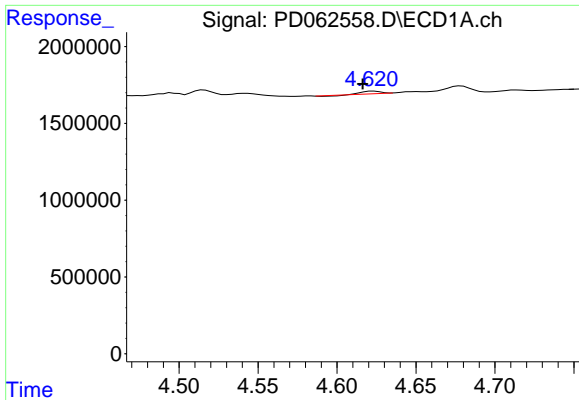
#5 Aldrin
 R.T.: 5.491 min
 Delta R.T.: 0.032 min
 Response: 3576570
 Conc: 0.21 ng/ml



#6 beta-BHC
 R.T.: 4.375 min
 Delta R.T.: -0.037 min
 Response: 1765632
 Conc: 2.84 ng/ml

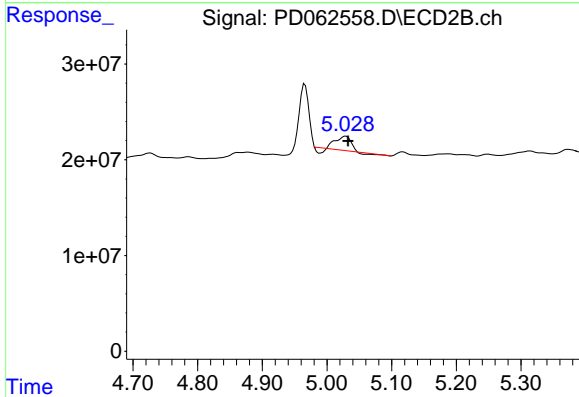


#6 beta-BHC
 R.T.: 4.786 min
 Delta R.T.: -0.030 min
 Response: 397549
 Conc: N.D.

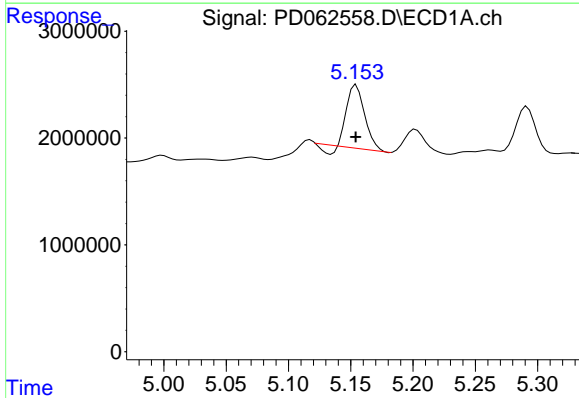


#7 delta-BHC
 R.T.: 4.623 min
 Delta R.T.: 0.007 min
 Response: 107745
 Conc: N.D.

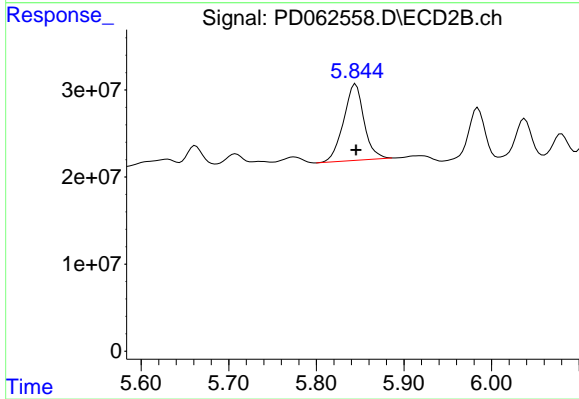
Instrument :
 ECD_D
 ClientSampleId :



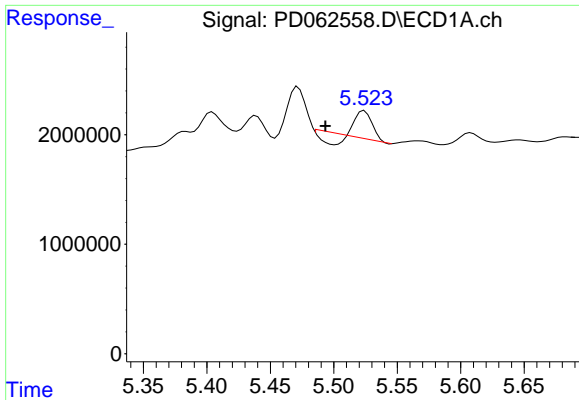
#7 delta-BHC
 R.T.: 5.029 min
 Delta R.T.: -0.003 min
 Response: 19555765
 Conc: 1.05 ng/ml



#8 Heptachlor epoxide
 R.T.: 5.154 min
 Delta R.T.: 0.000 min
 Response: 5666013
 Conc: 4.62 ng/ml



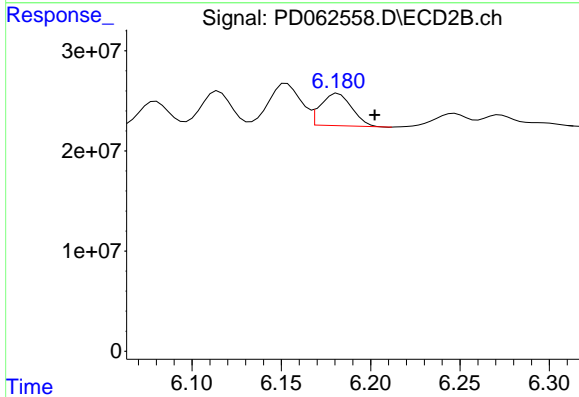
#8 Heptachlor epoxide
 R.T.: 5.845 min
 Delta R.T.: 0.000 min
 Response: 142098599
 Conc: 8.86 ng/ml



#9 Endosulfan I

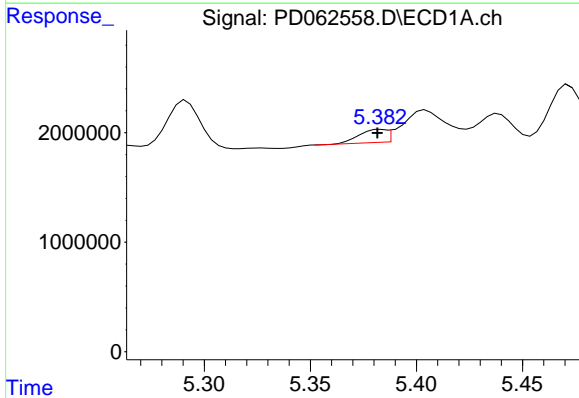
R.T.: 5.524 min
 Delta R.T.: 0.031 min
 Response: 1702232
 Conc: 1.52 ng/ml

Instrument :
 ECD_D
 ClientSampled :



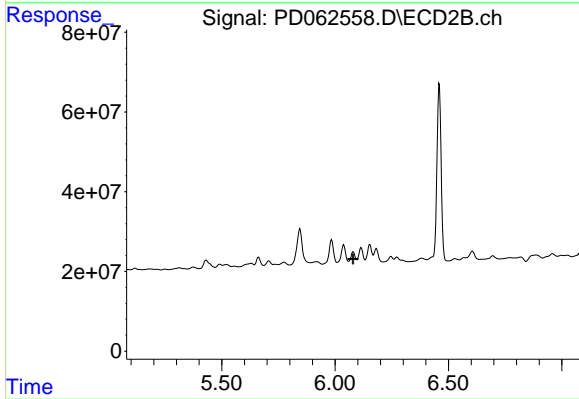
#9 Endosulfan I

R.T.: 6.182 min
 Delta R.T.: -0.020 min
 Response: 38965537
 Conc: 2.66 ng/ml



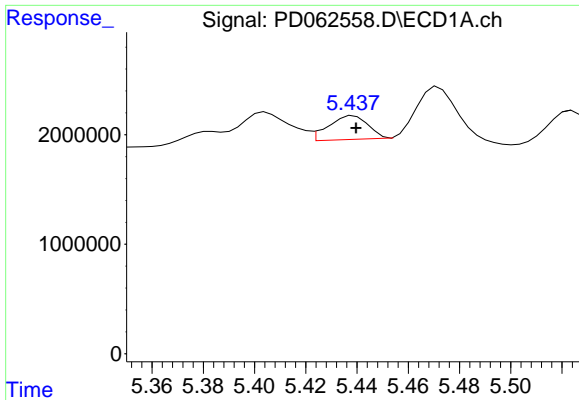
#10 trans-Chlordane

R.T.: 5.384 min
 Delta R.T.: 0.002 min
 Response: 1067321
 Conc: 0.85 ng/ml



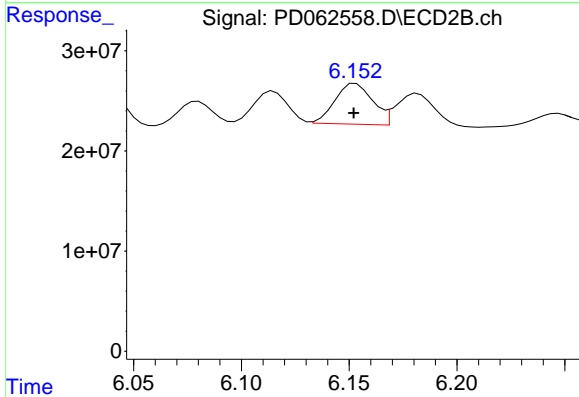
#10 trans-Chlordane

R.T.: 6.080 min
 Delta R.T.: 0.000 min
 Response: -9623480
 Conc: N.D.

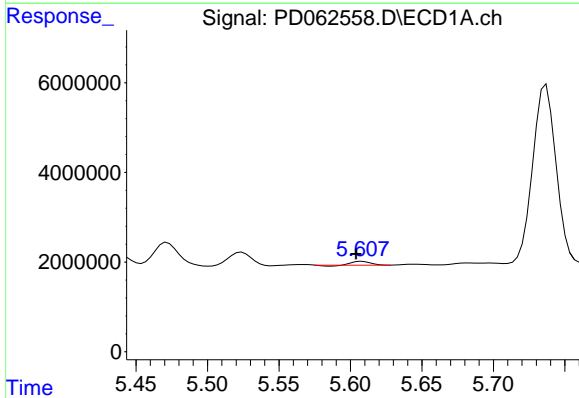


#11 cis-Chlordane
 R.T.: 5.439 min
 Delta R.T.: 0.000 min
 Response: 2324229
 Conc: 1.89 ng/ml

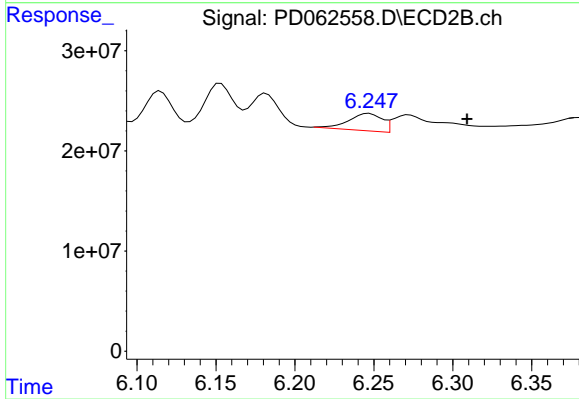
Instrument :
 ECD_D
 ClientSampleId :



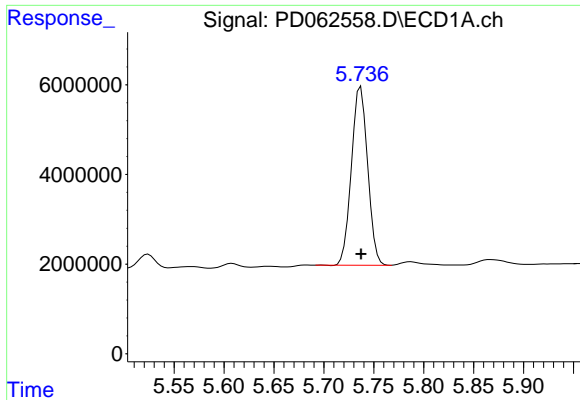
#11 cis-Chlordane
 R.T.: 6.153 min
 Delta R.T.: 0.000 min
 Response: 49349959
 Conc: 3.18 ng/ml



#12 4,4'-DDE
 R.T.: 5.608 min
 Delta R.T.: 0.004 min
 Response: 669800
 Conc: 0.54 ng/ml

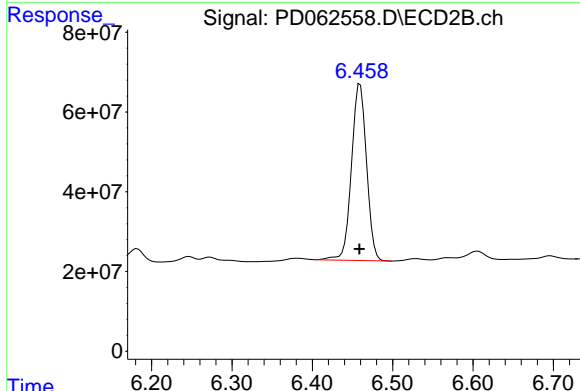


#12 4,4'-DDE
 R.T.: 6.247 min
 Delta R.T.: -0.062 min
 Response: 25925565
 Conc: 1.65 ng/ml

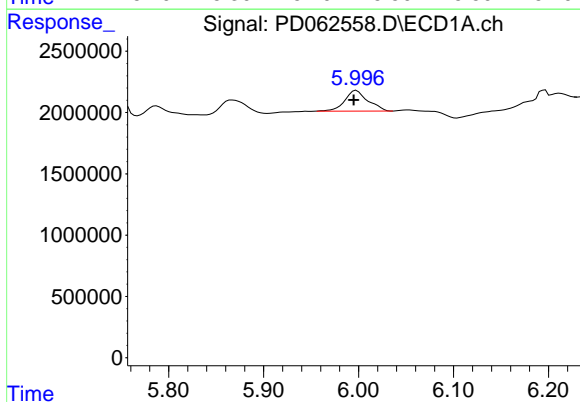


#13 Dieldrin
 R.T.: 5.737 min
 Delta R.T.: 0.000 min
 Response: 45030529
 Conc: 35.72 ng/ml

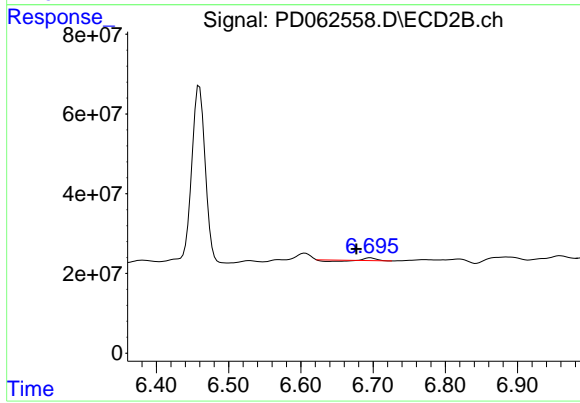
Instrument :
 ECD_D
 ClientSampled :



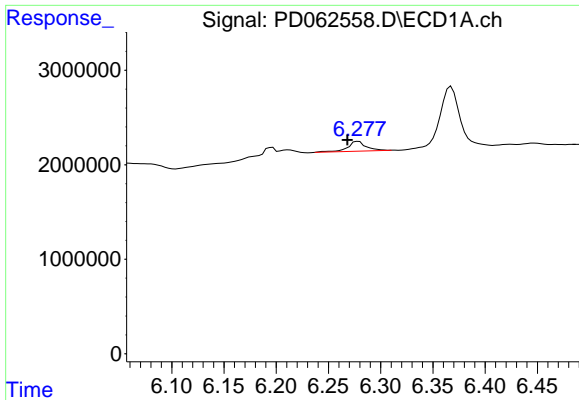
#13 Dieldrin
 R.T.: 6.460 min
 Delta R.T.: 0.000 min
 Response: 575759635
 Conc: 37.13 ng/ml



#14 Endrin
 R.T.: 5.998 min
 Delta R.T.: 0.003 min
 Response: 2843855
 Conc: 2.69 ng/ml

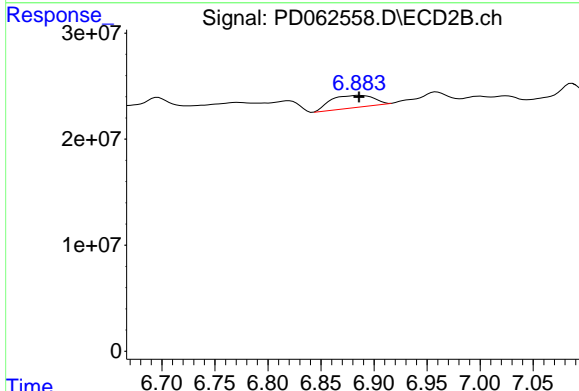


#14 Endrin
 R.T.: 6.696 min
 Delta R.T.: 0.019 min
 Response: 1258919
 Conc: 0.10 ng/ml

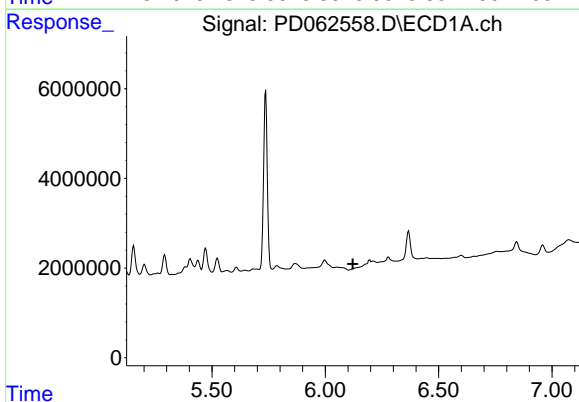


#15 Endosulfan II
 R.T.: 6.278 min
 Delta R.T.: 0.010 min
 Response: 1269152
 Conc: 1.22 ng/ml

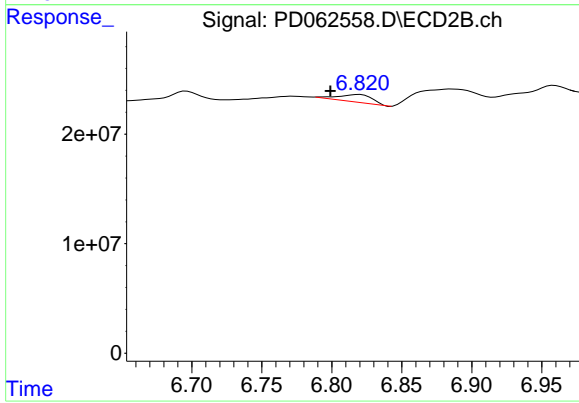
Instrument :
 ECD_D
 ClientSampleId :



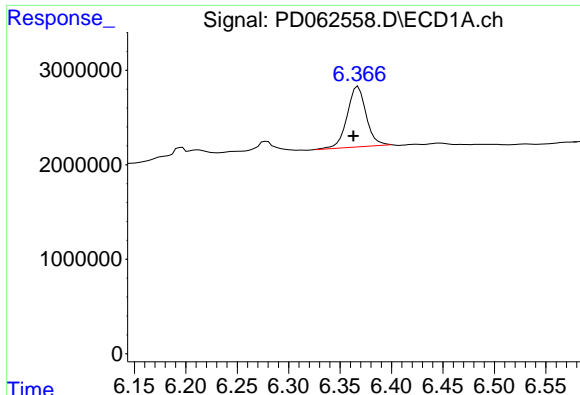
#15 Endosulfan II
 R.T.: 6.886 min
 Delta R.T.: 0.000 min
 Response: 32369227
 Conc: 2.59 ng/ml



#16 4,4'-DDD
 R.T.: 0.000 min
 Exp R.T. : 6.121 min
 Response: 0
 Conc: N.D.



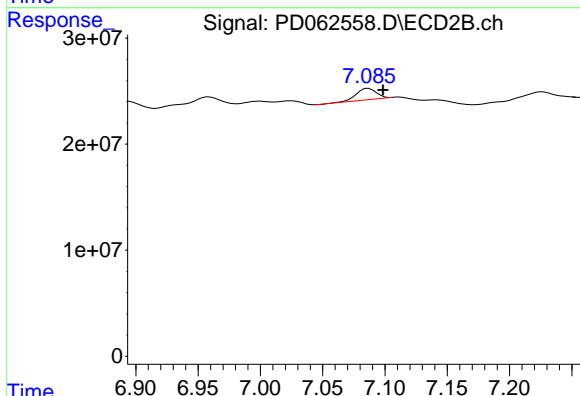
#16 4,4'-DDD
 R.T.: 6.820 min
 Delta R.T.: 0.021 min
 Response: 11669496
 Conc: 0.94 ng/ml



#17 4,4'-DDT

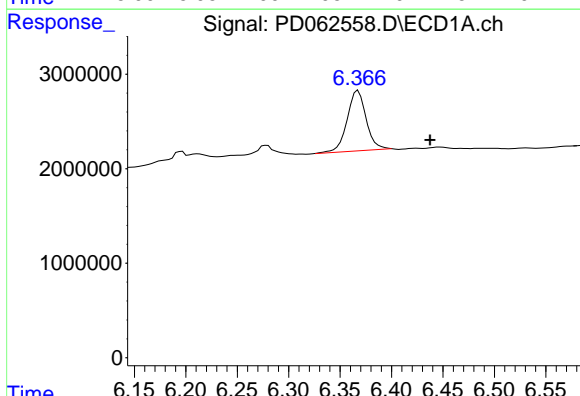
R.T.: 6.368 min
 Delta R.T.: 0.005 min
 Response: 8277273
 Conc: 8.84 ng/ml

Instrument :
 ECD_D
 ClientSampled :



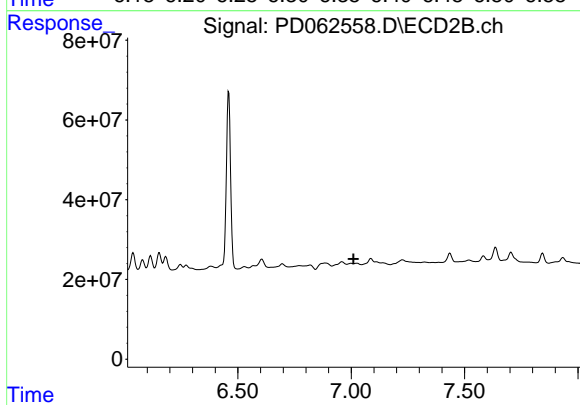
#17 4,4'-DDT

R.T.: 7.087 min
 Delta R.T.: -0.012 min
 Response: 11833940
 Conc: 1.00 ng/ml



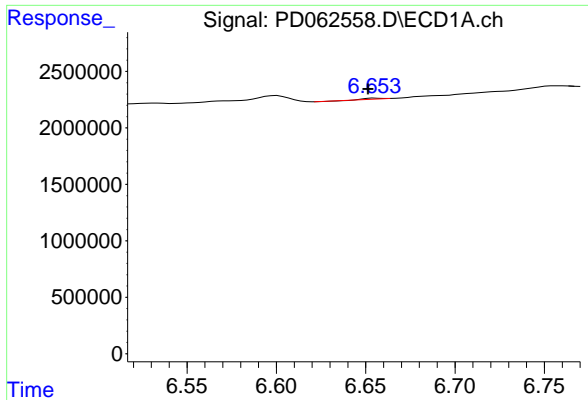
#18 Endrin aldehyde

R.T.: 6.368 min
 Delta R.T.: -0.070 min
 Response: 8277273
 Conc: 9.28 ng/ml



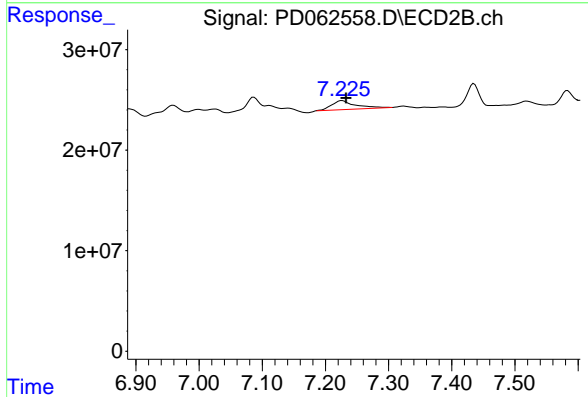
#18 Endrin aldehyde

R.T.: 7.000 min
 Delta R.T.: -0.011 min
 Response: -4299284
 Conc: N.D.

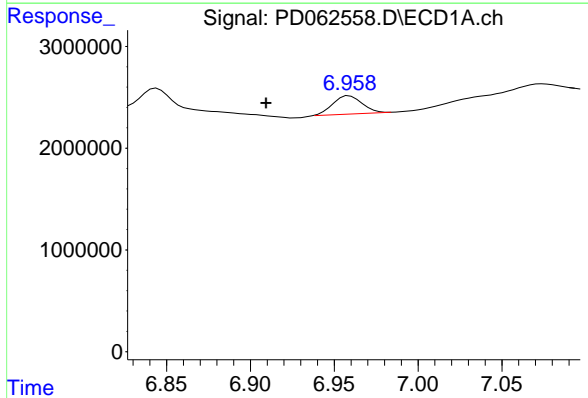


#19 Endosulfan Sulfate
 R.T.: 6.655 min
 Delta R.T.: 0.004 min
 Response: 32039
 Conc: N.D.

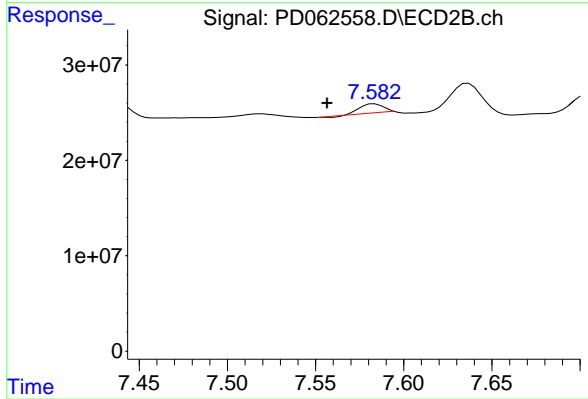
Instrument :
 ECD_D
 ClientSampleId :



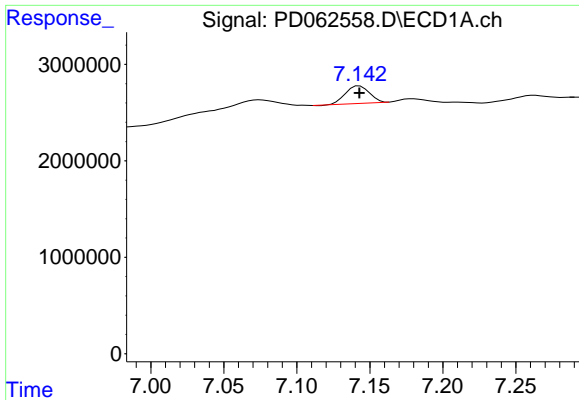
#19 Endosulfan Sulfate
 R.T.: 7.226 min
 Delta R.T.: -0.007 min
 Response: 23746359
 Conc: 1.86 ng/ml



#20 Methoxychlor
 R.T.: 6.959 min
 Delta R.T.: 0.050 min
 Response: 2181488
 Conc: 4.09 ng/ml

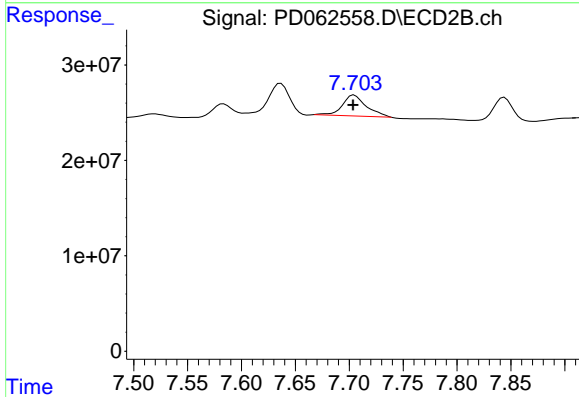


#20 Methoxychlor
 R.T.: 7.583 min
 Delta R.T.: 0.027 min
 Response: 9186445
 Conc: 1.62 ng/ml

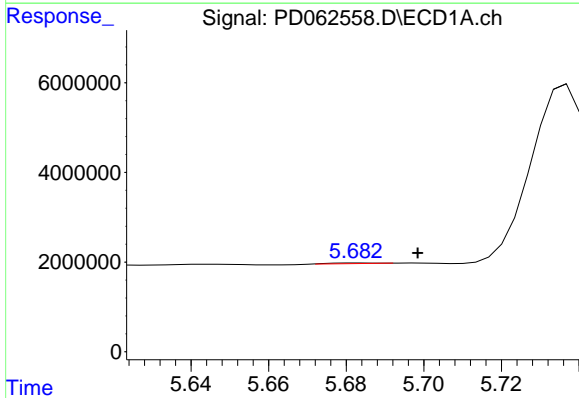


#21 Endrin ketone
 R.T.: 7.143 min
 Delta R.T.: 0.000 min
 Response: 2063745
 Conc: 1.76 ng/ml

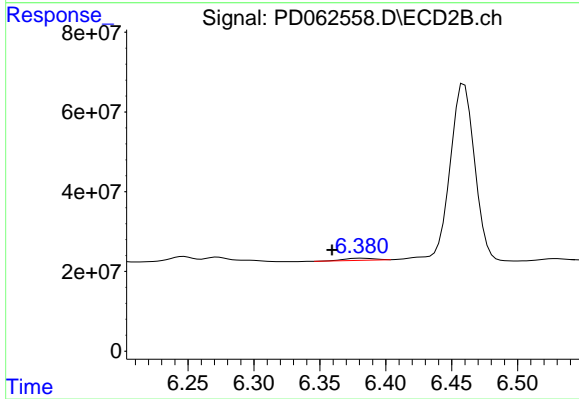
Instrument :
 ECD_D
 ClientSampled :



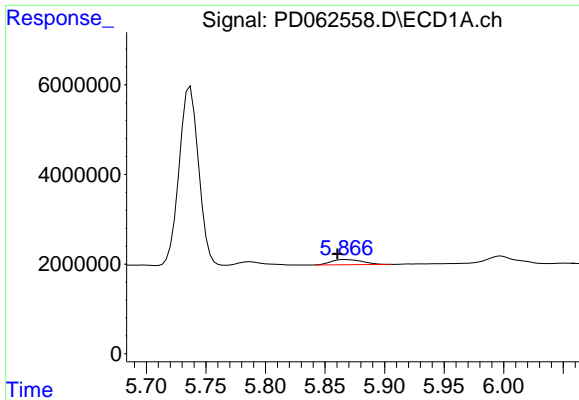
#21 Endrin ketone
 R.T.: 7.705 min
 Delta R.T.: 0.000 min
 Response: 33462859
 Conc: 2.72 ng/ml



#22 Toxaphene-1
 R.T.: 5.683 min
 Delta R.T.: -0.015 min
 Response: 106735
 Conc: 14.32 ng/ml

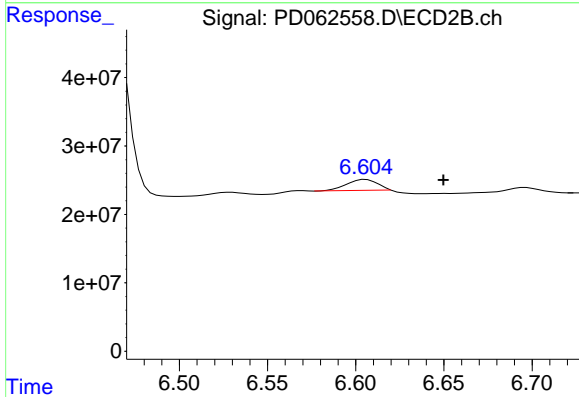


#22 Toxaphene-1
 R.T.: 6.381 min
 Delta R.T.: 0.022 min
 Response: 8063868
 Conc: 121.37 ng/ml

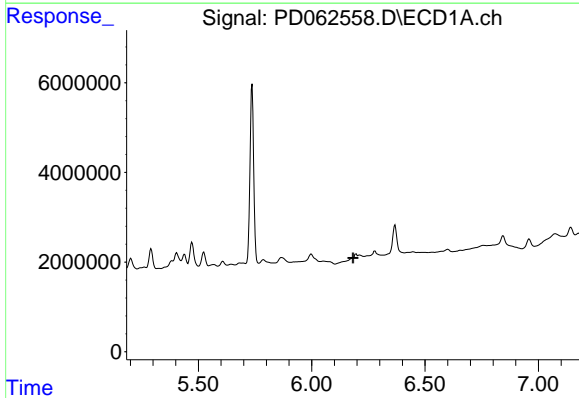


#23 Toxaphene-2
 R.T.: 5.867 min
 Delta R.T.: 0.007 min
 Response: 2127634
 Conc: 289.10 ng/ml

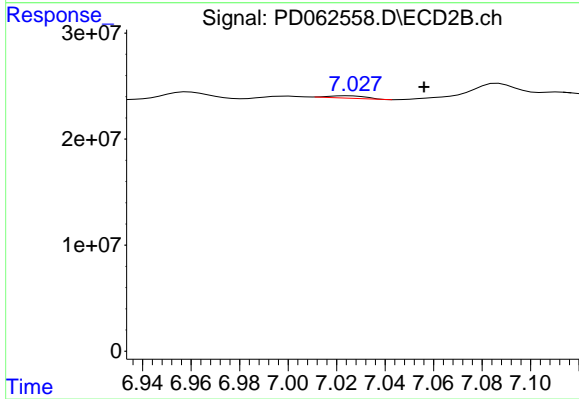
Instrument :
 ECD_D
 ClientSampleId :



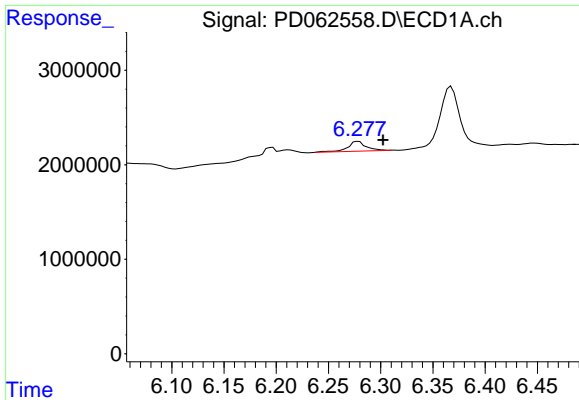
#23 Toxaphene-2
 R.T.: 6.606 min
 Delta R.T.: -0.044 min
 Response: 19443101
 Conc: 233.47 ng/ml



#24 Toxaphene-3
 R.T.: 6.196 min
 Delta R.T.: 0.013 min
 Response: -1666856
 Conc: N.D.

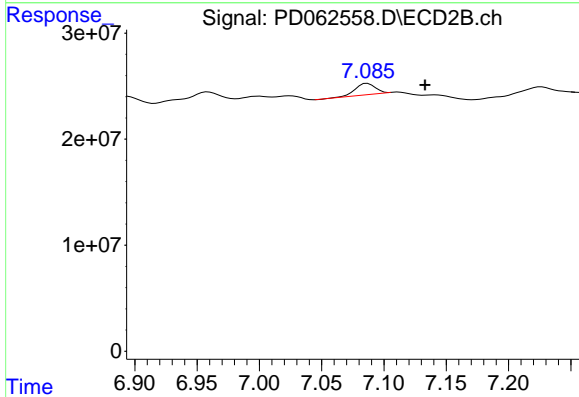


#24 Toxaphene-3
 R.T.: 7.026 min
 Delta R.T.: -0.031 min
 Response: 1998573
 Conc: 18.13 ng/ml

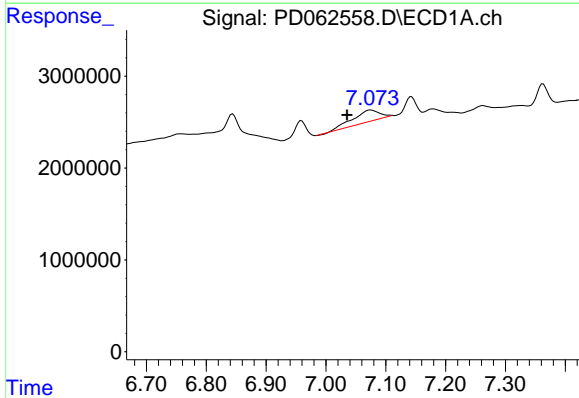


#25 Toxaphene-4
 R.T.: 6.278 min
 Delta R.T.: -0.024 min
 Response: 1269152
 Conc: 65.90 ng/ml

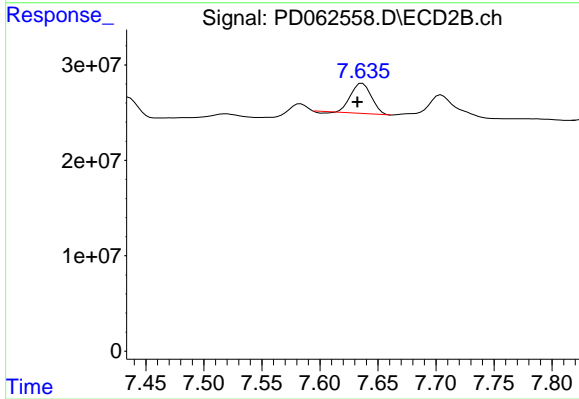
Instrument :
 ECD_D
 ClientSampleId :



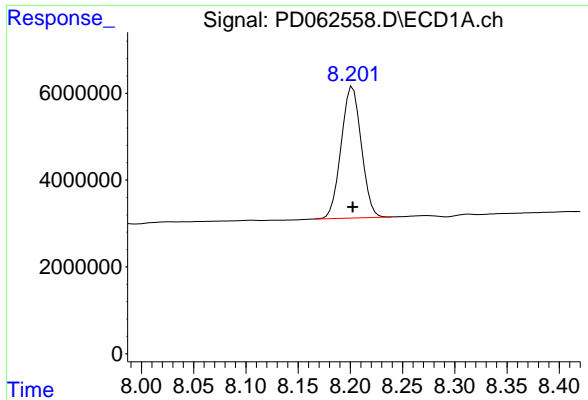
#25 Toxaphene-4
 R.T.: 7.087 min
 Delta R.T.: -0.046 min
 Response: 11833940
 Conc: 37.17 ng/ml



#26 Toxaphene-5
 R.T.: 7.075 min
 Delta R.T.: 0.039 min
 Response: 4154581
 Conc: 193.53 ng/ml



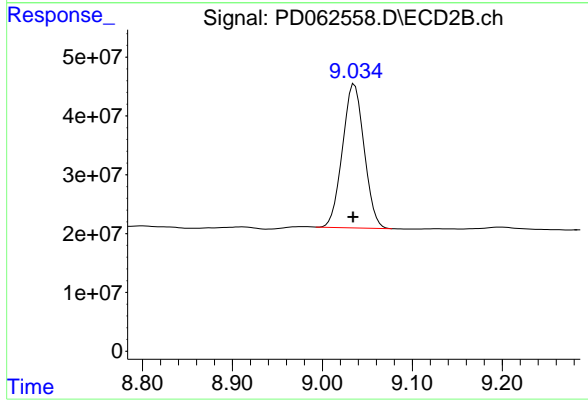
#26 Toxaphene-5
 R.T.: 7.637 min
 Delta R.T.: 0.004 min
 Response: 37843002
 Conc: 280.52 ng/ml



#27 Decachlorobiphenyl

R.T.: 8.202 min
Delta R.T.: 0.000 min
Response: 40619285
Conc: 37.84 ng/ml

Instrument :
ECD_D
ClientSampleId :



#27 Decachlorobiphenyl

R.T.: 9.036 min
Delta R.T.: 0.001 min
Response: 408935550
Conc: 37.46 ng/ml