

Data Path : Z:\pestpcbsrv\HPCHEM1\ECD_D\Data\PD042921\
 Data File : PD062569.D
 Signal(s) : Signal #1: ECD1A.ch Signal #2: ECD2B.ch
 Acq On : 29 Apr 2021 21:09
 Operator : AR\AJ
 Sample : M2065-05MSD
 Misc :
 ALS Vial : 50 Sample Multiplier: 1

Instrument :
 ECD_D
 ClientSampleId :
 BG558MSD

Integration File signal 1: autoint1.e
 Integration File signal 2: autoint2.e
 Quant Time: Apr 30 03:03:20 2021
 Quant Method : Z:\pestpcbsrv\HPCHEM1\ECD_D\Method\PD042921CLP.M
 Quant Title : GC Extractables
 QLast Update : Fri Apr 30 02:49:51 2021
 Response via : Initial Calibration
 Integrator: ChemStation

Volume Inj. : 1 µl
 Signal #1 Phase : ZB-MR2 Signal #2 Phase: ZB-MR1
 Signal #1 Info : 30M x 0.32mm x0.2 Signal #2 Info : 30M x 0.32mm x 0.50µm

	Compound	RT#1	RT#2	Resp#1	Resp#2	ng/ml	ng/ml

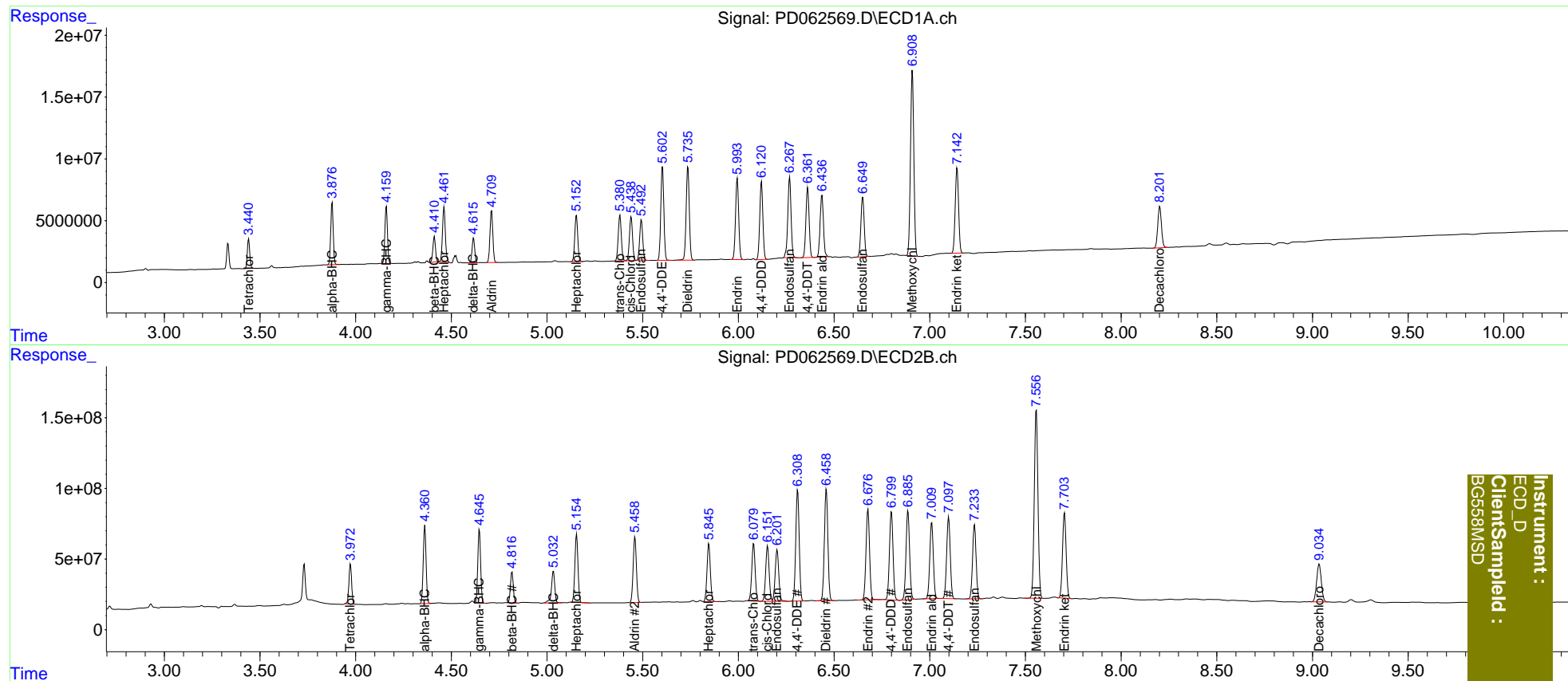
System Monitoring Compounds							
1)	SA Tetrachlo...	3.441	3.973	21131163	278.4E6	22.071	22.923
27)	SA Decachlor...	8.202	9.035	44532654	451.8E6	41.488	41.391
Target Compounds							
2)	A alpha-BHC	3.877	4.362	45644239	568.4E6	32.601	30.059
3)	MA gamma-BHC...	4.161	4.647	43370637	525.5E6	32.467	30.418
4)	MA Heptachlor	4.462	5.155	46705799	543.1E6	36.374	31.202
5)	MB Aldrin	4.711	5.460	43410878	545.3E6	33.327	31.524
6)	B beta-BHC	4.412	4.817	19238262	227.5E6	30.987	29.807
7)	B delta-BHC	4.616	5.034	19075947	270.9E6	14.019	14.601
8)	B Heptachlo...	5.154	5.846	40641613	498.2E6	33.164	31.063
9)	A Endosulfan I	5.493	6.203	35718598	474.1E6	31.943	32.323
10)	B trans-Chl...	5.381	6.080	41515649	502.8E6	33.116	30.698
11)	B cis-Chlor...	5.440	6.153	39828066	489.7E6	32.435	31.545
12)	B 4,4'-DDE	5.604	6.310	84121561	982.7E6	67.974	62.717
13)	MA Dieldrin	5.737	6.460	86739472	1004.0E6	68.812	64.748
14)	MA Endrin	5.995	6.678	75083517	824.7E6	70.962	66.126
15)	B Endosulfa...	6.268	6.886	77429768	821.6E6	74.659	65.652
16)	A 4,4'-DDD	6.121	6.800	71381179	816.2E6	71.685	65.674
17)	MA 4,4'-DDT	6.362	7.099	66102767	756.1E6	70.574	63.679
18)	B Endrin al...	6.437	7.011	61283506	693.4E6	68.684	63.557
19)	B Endosulfa...	6.650	7.234	57900167	682.3E6	57.923	53.467
20)	A Methoxychlor	6.909	7.557	181.9E6	1778.6E6	340.948	313.781
21)	B Endrin ke...	7.143	7.704	84097446	791.5E6	71.761	64.315

(f)=RT Delta > 1/2 Window (#)=Amounts differ by > 25% (m)=manual int.

Data Path : Z:\pestpcbsrv\HPCHEM1\ECD_D\Data\PD042921\
 Data File : PD062569.D
 Signal(s) : Signal #1: ECD1A.ch Signal #2: ECD2B.ch
 Acq On : 29 Apr 2021 21:09
 Operator : AR\AJ
 Sample : M2065-05MSD
 Misc :
 ALS Vial : 50 Sample Multiplier: 1

Integration File signal 1: autoint1.e
 Integration File signal 2: autoint2.e
 Quant Time: Apr 30 03:03:20 2021
 Quant Method : Z:\pestpcbsrv\HPCHEM1\ECD_D\Method\PD042921CLP.M
 Quant Title : GC Extractables
 QLast Update : Fri Apr 30 02:49:51 2021
 Response via : Initial Calibration
 Integrator: ChemStation

Volume Inj. : 1 µl
 Signal #1 Phase : ZB-MR2 Signal #2 Phase: ZB-MR1
 Signal #1 Info : 30M x 0.32mm x0.2 Signal #2 Info : 30M x 0.32mm x 0.50µm



Instrument :
 ECD_D
 ClientSampleId :
 BG558MSD