

Data Path : Z:\pestpcbsrv\HPCHEM1\ECD_D\Data\PD042924\
 Data File : PD082661.D
 Signal(s) : Signal #1: ECD1A.ch Signal #2: ECD2B.ch
 Acq On : 29 Apr 2024 14:57
 Operator : AR\AJ
 Sample : PCHLORICV500
 Misc :
 ALS Vial : 21 Sample Multiplier: 1

Instrument :
 ECD_D
 ClientSampleId :
 ICVPD042924

Integration File signal 1: autoint1.e
 Integration File signal 2: autoint2.e
 Quant Time: Apr 29 15:12:19 2024
 Quant Method : Z:\pestpcbsrv\HPCHEM1\ECD_D\Method\PD042924.M
 Quant Title : GC Extractables
 QLast Update : Mon Apr 29 15:11:47 2024
 Response via : Initial Calibration
 Integrator: ChemStation

Volume Inj. : 1 µl
 Signal #1 Phase : ZB-MR1 Signal #2 Phase: ZB-MR2
 Signal #1 Info : 30M x 0.32mm x0.5 Signal #2 Info : 30M x 0.32mm x 0.25µm

Compound	RT#1	RT#2	Resp#1	Resp#2	ng/ml	ng/ml

System Monitoring Compounds						
1) SA Tetrachlo...	3.565	2.776	83383053	248.0E6	53.069	53.489
28) SA Decachlor...	9.121	7.907	105.6E6	207.2E6	53.000	52.418
Target Compounds						
23) Chlordane-1	4.733	3.771	44090032	84157191	535.227	531.011
24) Chlordane-2	5.264	4.346	44846340	90214833	523.954	493.582
25) Chlordane-3	5.978	4.974	179.2E6	279.8E6	528.850	539.827
26) Chlordane-4	6.060	5.038	213.5E6	264.1E6	527.913	535.699
27) Chlordane-5	6.913	5.932	37080963	95339646	537.897	544.801

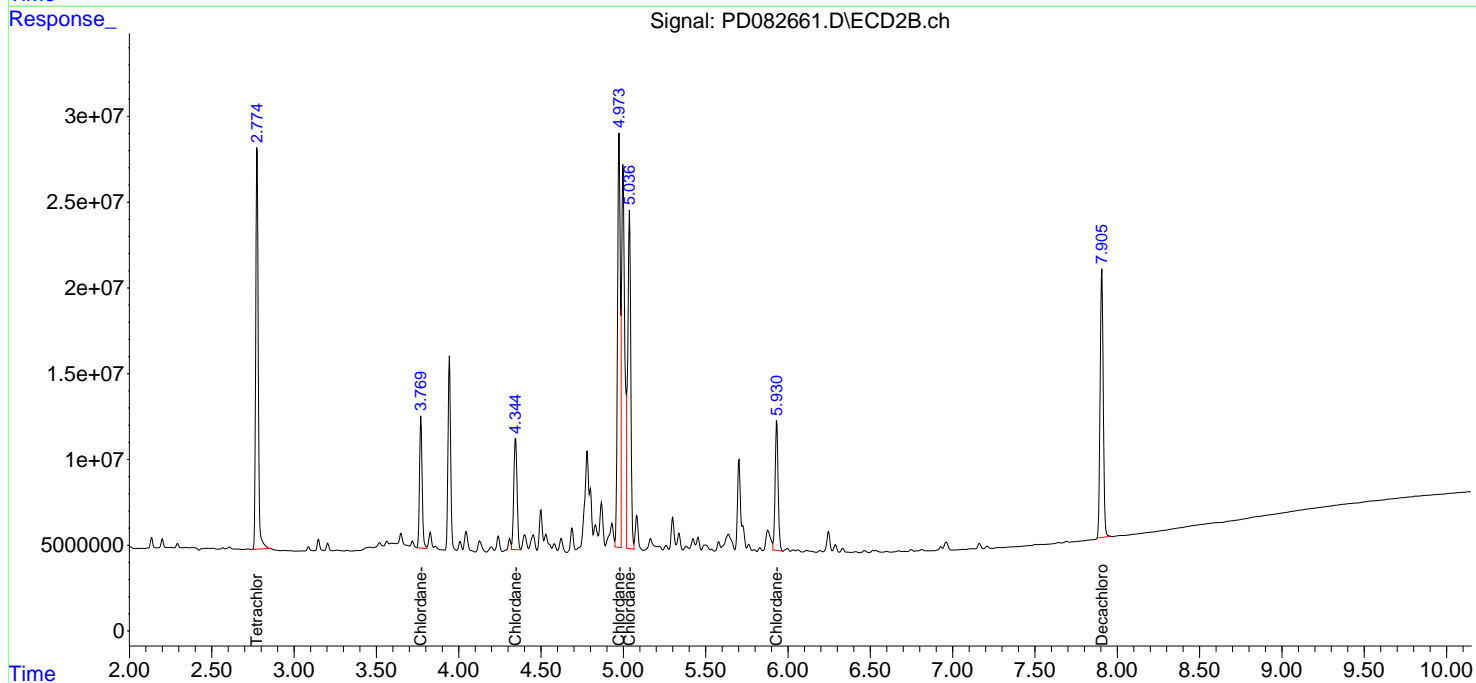
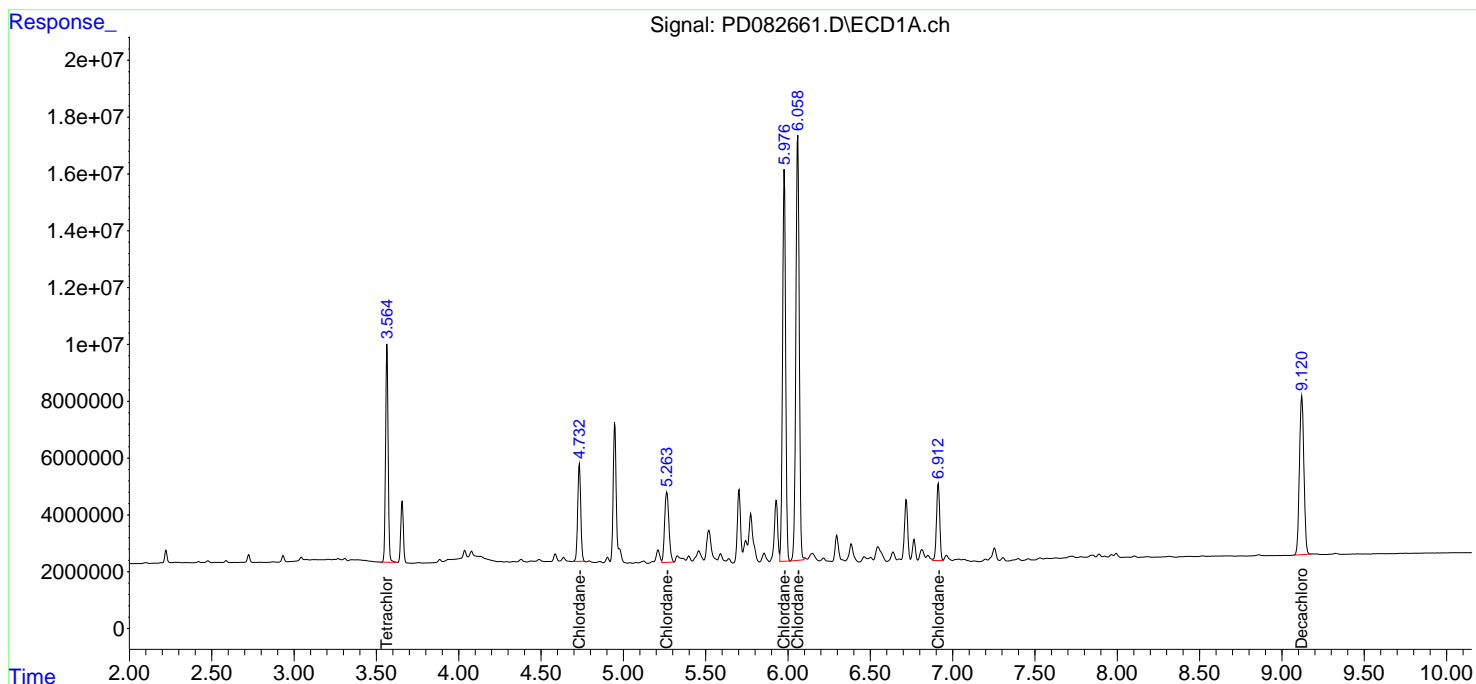
(f)=RT Delta > 1/2 Window (#)=Amounts differ by > 25% (m)=manual int.

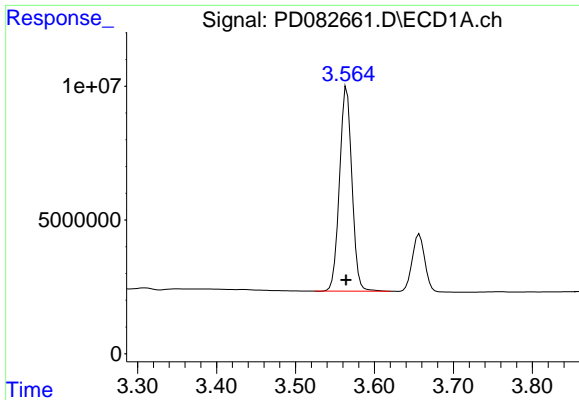
Data Path : Z:\pestpcbsrv\HPCHEM1\ECD_D\Data\PD042924\
 Data File : PD082661.D
 Signal(s) : Signal #1: ECD1A.ch Signal #2: ECD2B.ch
 Acq On : 29 Apr 2024 14:57
 Operator : AR\AJ
 Sample : PCHLORICV500
 Misc :
 ALS Vial : 21 Sample Multiplier: 1

Instrument :
 ECD_D
 ClientSampleId :
 ICVPD042924

Integration File signal 1: autoint1.e
 Integration File signal 2: autoint2.e
 Quant Time: Apr 29 15:12:19 2024
 Quant Method : Z:\pestpcbsrv\HPCHEM1\ECD_D\Method\PD042924.M
 Quant Title : GC Extractables
 QLast Update : Mon Apr 29 15:11:47 2024
 Response via : Initial Calibration
 Integrator: ChemStation

Volume Inj. : 1 µl
 Signal #1 Phase : ZB-MR1 Signal #2 Phase: ZB-MR2
 Signal #1 Info : 30M x 0.32mm x0.5 Signal #2 Info : 30M x 0.32mm x 0.25µm

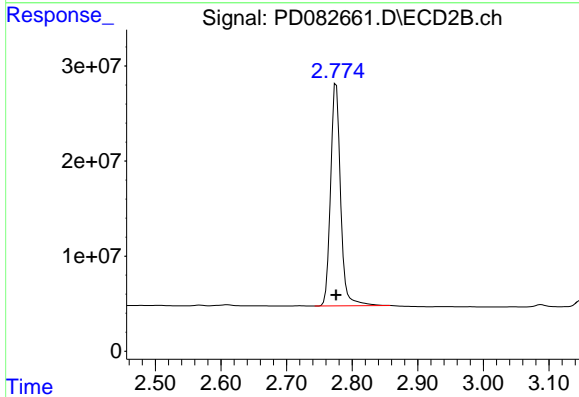




#1 Tetrachloro-m-xylene

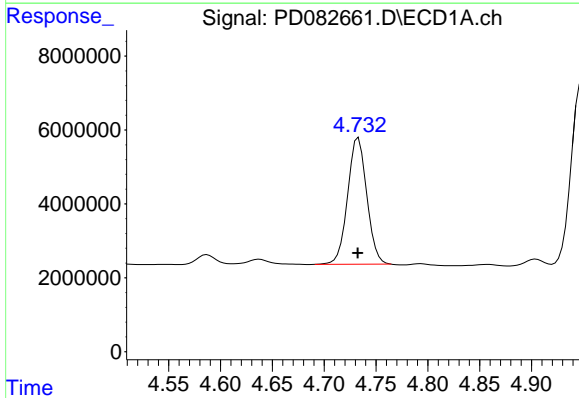
R.T.: 3.565 min
 Delta R.T.: 0.000 min
 Response: 83383053
 Conc: 53.07 ng/ml

Instrument :
 ECD_D
 ClientSampleId :
 ICPD042924



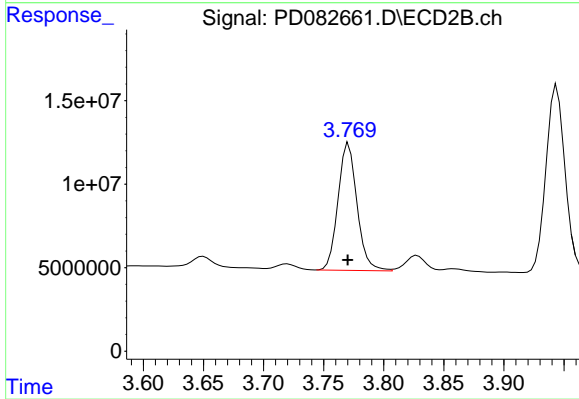
#1 Tetrachloro-m-xylene

R.T.: 2.776 min
 Delta R.T.: 0.000 min
 Response: 247993994
 Conc: 53.49 ng/ml



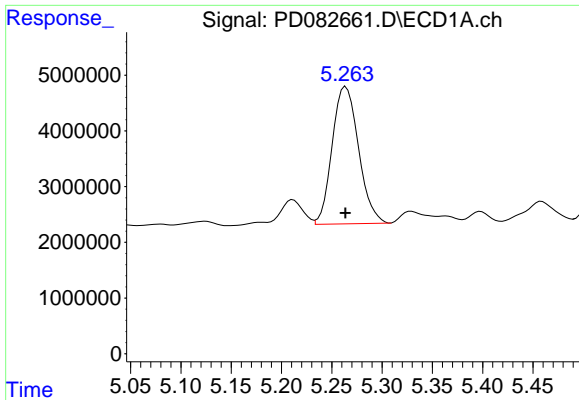
#23 Chlordane-1

R.T.: 4.733 min
 Delta R.T.: 0.000 min
 Response: 44090032
 Conc: 535.23 ng/ml



#23 Chlordane-1

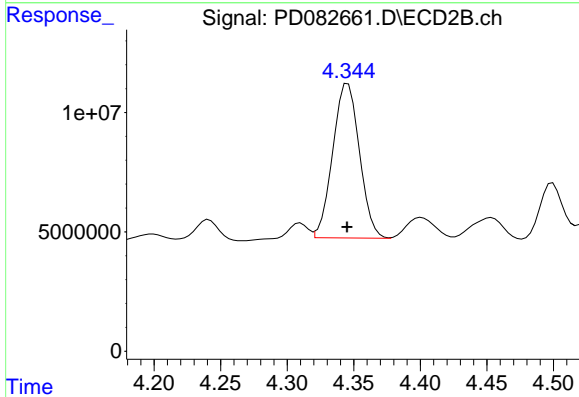
R.T.: 3.771 min
 Delta R.T.: 0.000 min
 Response: 84157191
 Conc: 531.01 ng/ml



#24 Chlordane-2

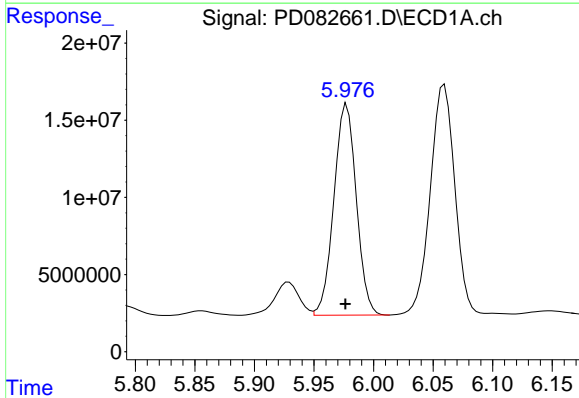
R.T.: 5.264 min
 Delta R.T.: 0.000 min
 Response: 44846340
 Conc: 523.95 ng/ml

Instrument :
 ECD_D
 ClientSampleId :
 ICPD042924



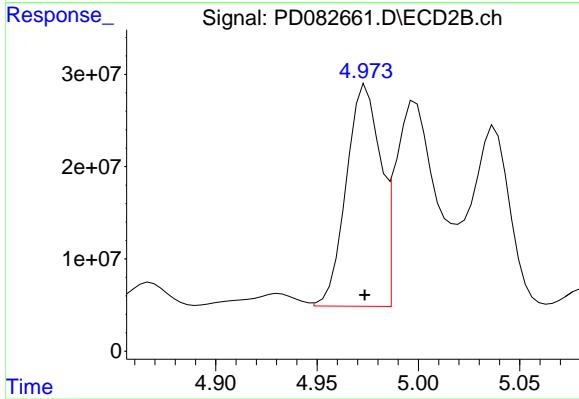
#24 Chlordane-2

R.T.: 4.346 min
 Delta R.T.: 0.000 min
 Response: 90214833
 Conc: 493.58 ng/ml



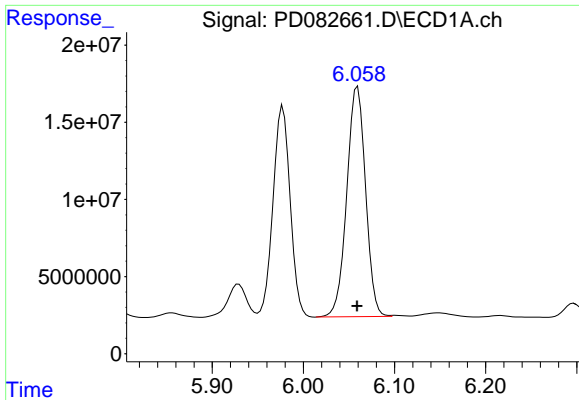
#25 Chlordane-3

R.T.: 5.978 min
 Delta R.T.: 0.001 min
 Response: 179164627
 Conc: 528.85 ng/ml



#25 Chlordane-3

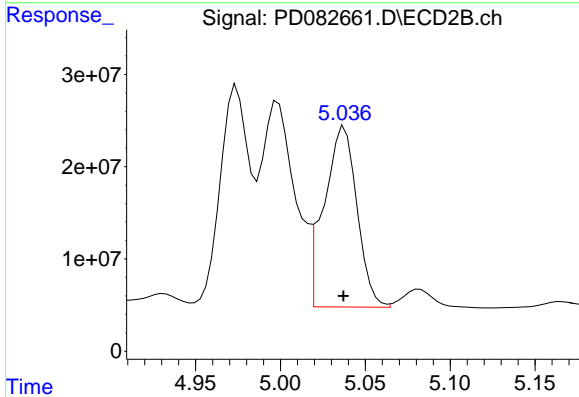
R.T.: 4.974 min
 Delta R.T.: 0.000 min
 Response: 279793918
 Conc: 539.83 ng/ml



#26 Chlordane-4

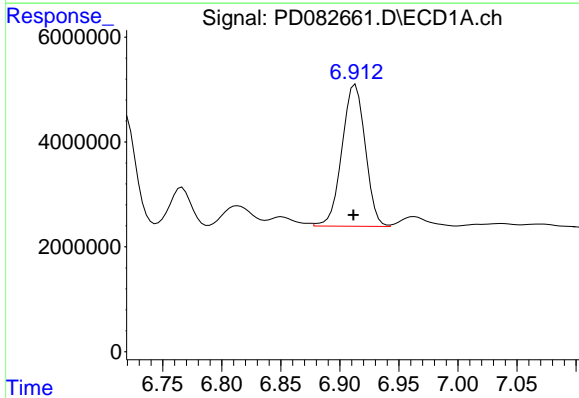
R.T.: 6.060 min
 Delta R.T.: 0.000 min
 Response: 213491136
 Conc: 527.91 ng/ml

Instrument :
 ECD_D
 ClientSampleId :
 ICPD042924



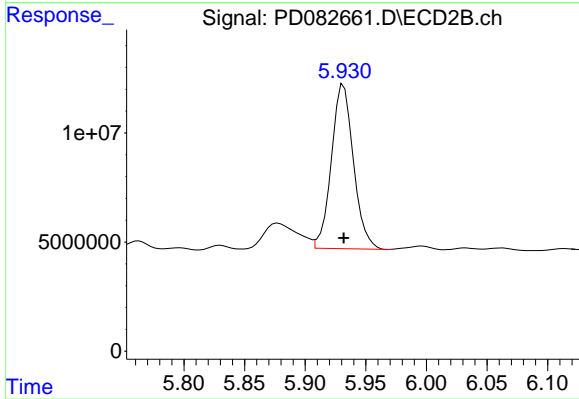
#26 Chlordane-4

R.T.: 5.038 min
 Delta R.T.: 0.000 min
 Response: 264100066
 Conc: 535.70 ng/ml



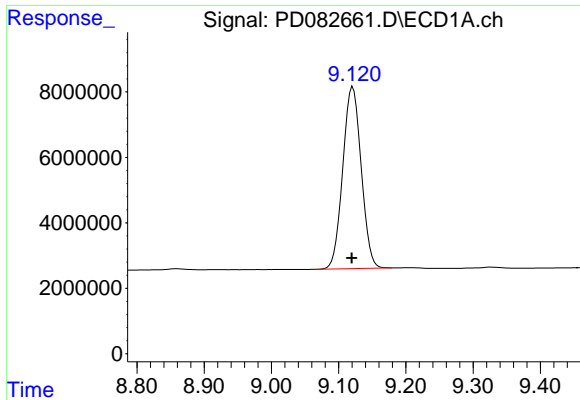
#27 Chlordane-5

R.T.: 6.913 min
 Delta R.T.: 0.002 min
 Response: 37080963
 Conc: 537.90 ng/ml



#27 Chlordane-5

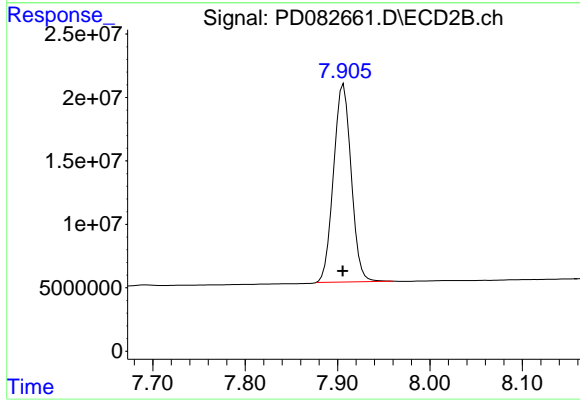
R.T.: 5.932 min
 Delta R.T.: 0.000 min
 Response: 95339646
 Conc: 544.80 ng/ml



#28 Decachlorobiphenyl

R.T.: 9.121 min
Delta R.T.: 0.001 min
Response: 105573644
Conc: 53.00 ng/ml

Instrument :
ECD_D
ClientSampleId :
ICVPD042924



#28 Decachlorobiphenyl

R.T.: 7.907 min
Delta R.T.: 0.000 min
Response: 207200975
Conc: 52.42 ng/ml