

Data Path : Z:\pestpcbsrv\HPCHEM1\ECD_D\Data\PD042925\
 Data File : PD088324.D
 Signal(s) : Signal #1: ECD1A.ch Signal #2: ECD2B.ch
 Acq On : 29 Apr 2025 13:05
 Operator : AR\AJ
 Sample : PB167777BS
 Misc :
 ALS Vial : 6 Sample Multiplier: 1

Instrument :
 ECD_D
 ClientSampleId :
 PB167777BS

Integration File signal 1: autoint1.e
 Integration File signal 2: autoint2.e
 Quant Time: Apr 30 00:47:56 2025
 Quant Method : Z:\pestpcbsrv\HPCHEM1\ECD_D\Method\PD041825.M
 Quant Title : GC Extractables
 QLast Update : Sat Apr 19 06:32:27 2025
 Response via : Initial Calibration
 Integrator: ChemStation

Volume Inj. : 1 µl
 Signal #1 Phase : ZB-MR2 Signal #2 Phase: ZB-MR2
 Signal #1 Info : 30M x 0.32mm x0.5 Signal #2 Info : 30M x 0.32mm x 0.25µm

Compound	RT#1	RT#2	Resp#1	Resp#2	ng/ml	ng/ml

System Monitoring Compounds						
1) SA Tetrachlo...	3.550	2.881	41574588	315.2E6	20.814	21.559
28) SA Decachlor...	9.074	8.076	71576213	378.1E6	21.637	20.460
Target Compounds						
2) A alpha-BHC	4.000	3.394	221.2E6	1106.6E6	51.297	48.403
3) MA gamma-BHC...	4.331	3.731	214.6E6	1031.3E6	51.257	47.882
4) MA Heptachlor	4.931	4.085	210.3E6	1017.6E6	52.080	47.555
5) MB Aldrin	5.272	4.371	207.7E6	1008.9E6	52.592	48.500
6) B beta-BHC	4.516	4.027	82618931	455.7E6	50.893	49.246
7) B delta-BHC	4.764	4.263	220.9E6	1036.5E6	53.546	48.749
8) B Heptachlo...	5.692	4.875	187.7E6	916.6E6	52.533	48.514
9) A Endosulfan I	6.075	5.249	178.7E6	876.8E6	52.926	48.679
10) B gamma-Chl...	5.947	5.128	190.2E6	990.2E6	52.518	48.789
11) B alpha-Chl...	6.028	5.192	189.5E6	951.3E6	52.505	48.526
12) B 4,4'-DDE	6.196	5.378	171.9E6	956.5E6	52.124	48.570
13) MA Dieldrin	6.348	5.515	191.8E6	976.1E6	53.761	48.970
14) MA Endrin	6.575	5.791	156.3E6	870.6E6	52.404	47.829
15) B Endosulfa...	6.786	6.083	161.9E6	849.1E6	51.795	48.461
16) A 4,4'-DDD	6.706	5.932	134.0E6	808.7E6	53.266	49.354
17) MA 4,4'-DDT	7.022	6.186	142.8E6	811.3E6	51.428	47.677
18) B Endrin al...	6.915	6.261	123.3E6	651.6E6	53.443	48.986
19) B Endosulfa...	7.150	6.484	152.0E6	819.6E6	52.871	47.835
20) A Methoxychlor	7.494	6.757	74000794	423.7E6	49.349	46.458
21) B Endrin ke...	7.630	6.994	162.8E6	897.7E6	52.760	47.996
22) Mirex	8.115	7.188	117.2E6	681.9E6	49.896	46.010

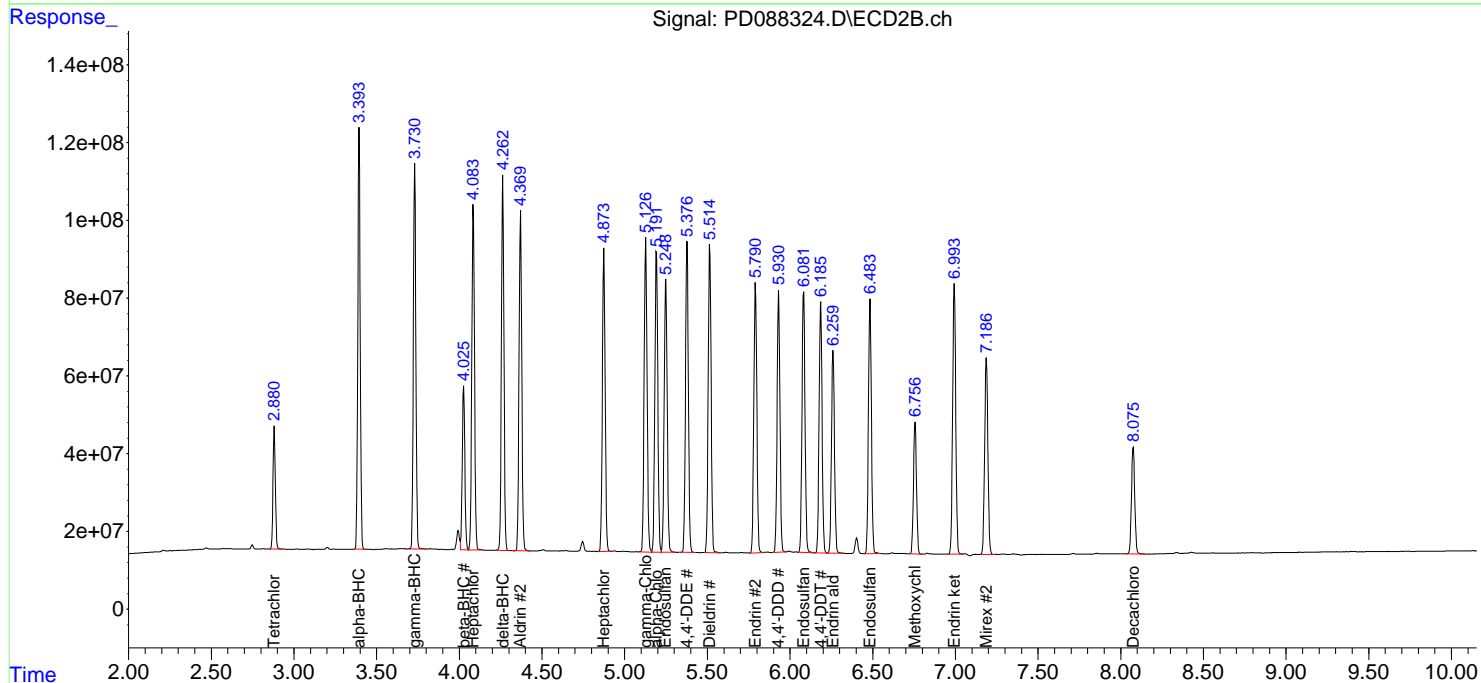
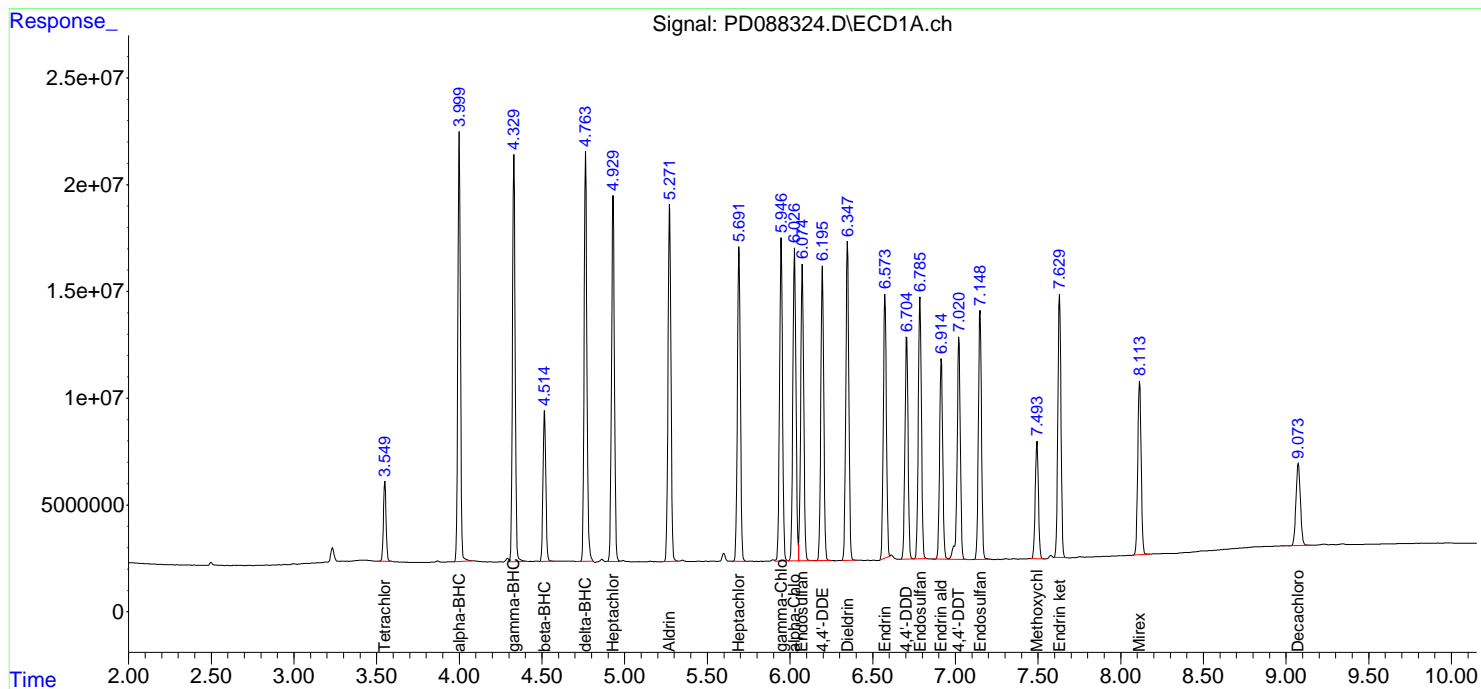
(f)=RT Delta > 1/2 Window (#)=Amounts differ by > 25% (m)=manual int.

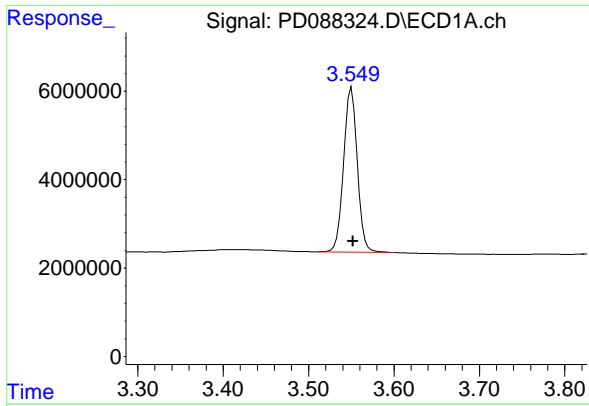
Data Path : Z:\pestpcbsrv\HPCHEM1\ECD_D\Data\PD042925\
 Data File : PD088324.D
 Signal(s) : Signal #1: ECD1A.ch Signal #2: ECD2B.ch
 Acq On : 29 Apr 2025 13:05
 Operator : AR\AJ
 Sample : PB167777BS
 Misc :
 ALS Vial : 6 Sample Multiplier: 1

Instrument :
 ECD_D
 ClientSampleId :
 PB167777BS

Integration File signal 1: autoint1.e
 Integration File signal 2: autoint2.e
 Quant Time: Apr 30 00:47:56 2025
 Quant Method : Z:\pestpcbsrv\HPCHEM1\ECD_D\Method\PD041825.M
 Quant Title : GC Extractables
 QLast Update : Sat Apr 19 06:32:27 2025
 Response via : Initial Calibration
 Integrator: ChemStation

Volume Inj. : 1 µl
 Signal #1 Phase : ZB-MR1 Signal #2 Phase: ZB-MR2
 Signal #1 Info : 30M x 0.32mm x 0.5 Signal #2 Info : 30M x 0.32mm x 0.25µm

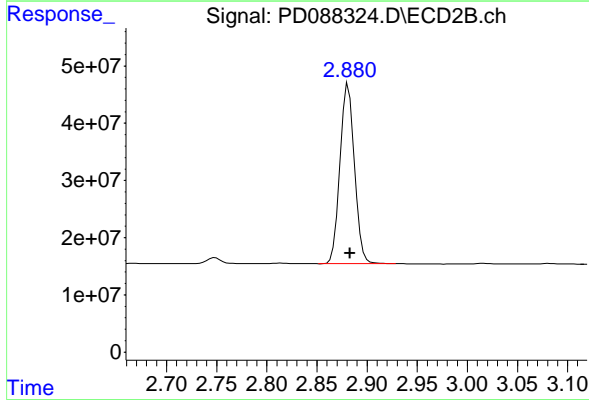




#1 Tetrachloro-m-xylene

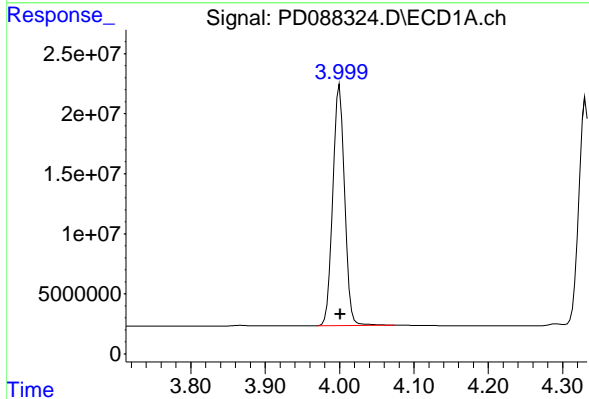
R.T.: 3.550 min
 Delta R.T.: -0.002 min
 Response: 41574588
 Conc: 20.81 ng/ml

Instrument :
 ECD_D
 ClientSampleId :
 PB167777BS



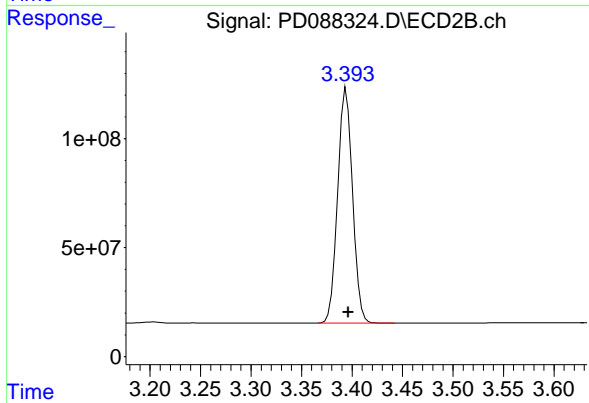
#1 Tetrachloro-m-xylene

R.T.: 2.881 min
 Delta R.T.: -0.002 min
 Response: 315230180
 Conc: 21.56 ng/ml



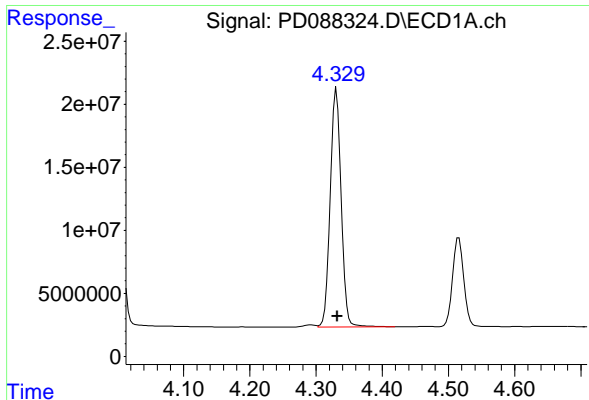
#2 alpha-BHC

R.T.: 4.000 min
 Delta R.T.: 0.000 min
 Response: 221191026
 Conc: 51.30 ng/ml



#2 alpha-BHC

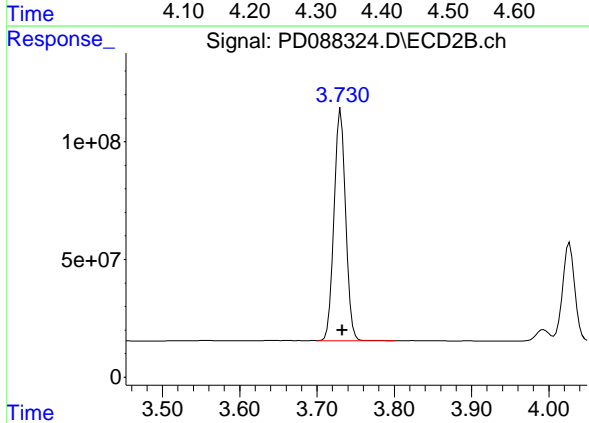
R.T.: 3.394 min
 Delta R.T.: -0.002 min
 Response: 1106569393
 Conc: 48.40 ng/ml



#3 gamma-BHC (Lindane)

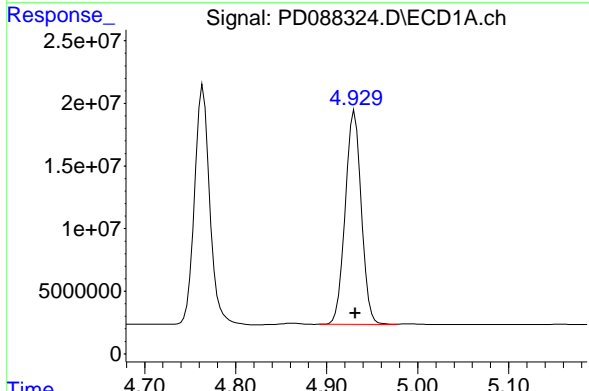
R.T.: 4.331 min
 Delta R.T.: 0.000 min
 Response: 214640613
 Conc: 51.26 ng/ml

Instrument :
 ECD_D
 ClientSampleId :
 PB167777BS



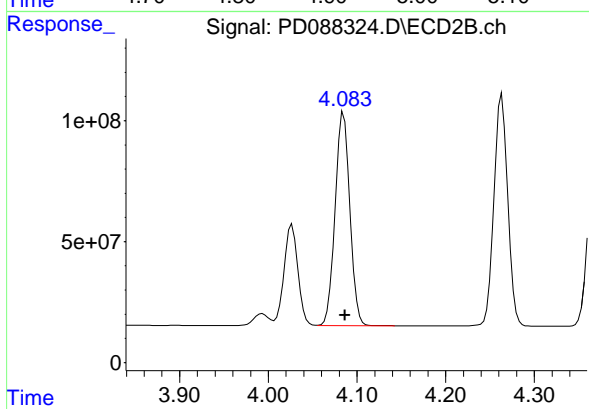
#3 gamma-BHC (Lindane)

R.T.: 3.731 min
 Delta R.T.: -0.002 min
 Response: 1031316082
 Conc: 47.88 ng/ml



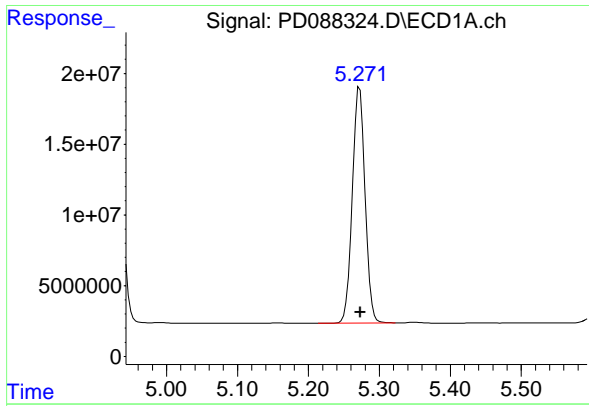
#4 Heptachlor

R.T.: 4.931 min
 Delta R.T.: 0.000 min
 Response: 210347375
 Conc: 52.08 ng/ml



#4 Heptachlor

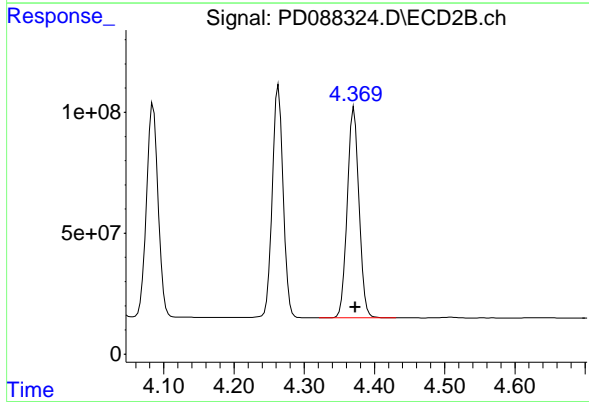
R.T.: 4.085 min
 Delta R.T.: -0.002 min
 Response: 1017579980
 Conc: 47.55 ng/ml



#5 Aldrin

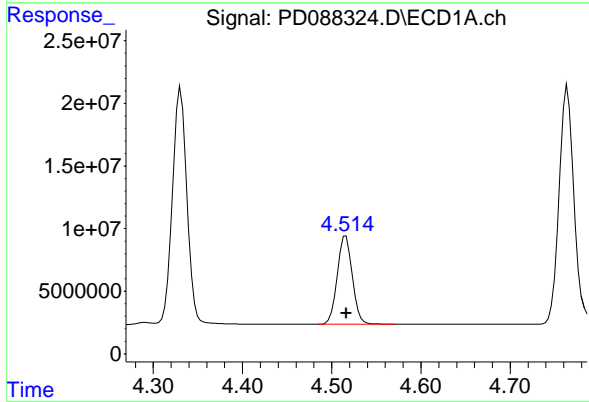
R.T.: 5.272 min
 Delta R.T.: -0.001 min
 Response: 207715443
 Conc: 52.59 ng/ml

Instrument :
 ECD_D
 ClientSampleId :
 PB167777BS



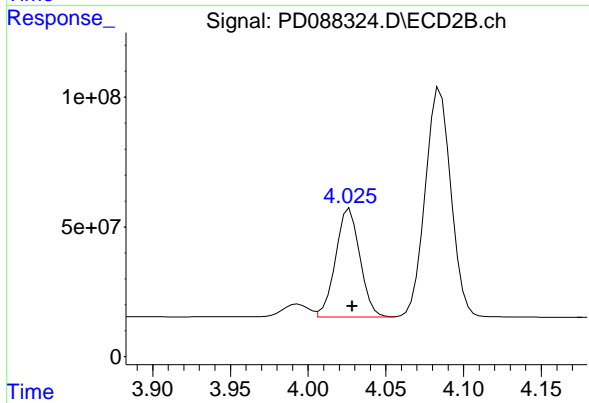
#5 Aldrin

R.T.: 4.371 min
 Delta R.T.: -0.002 min
 Response: 1008939357
 Conc: 48.50 ng/ml



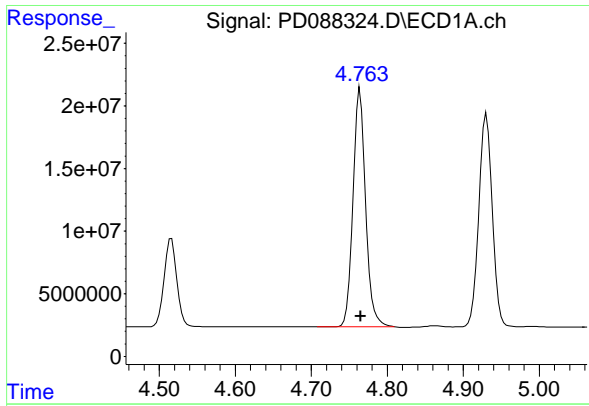
#6 beta-BHC

R.T.: 4.516 min
 Delta R.T.: 0.000 min
 Response: 82618931
 Conc: 50.89 ng/ml



#6 beta-BHC

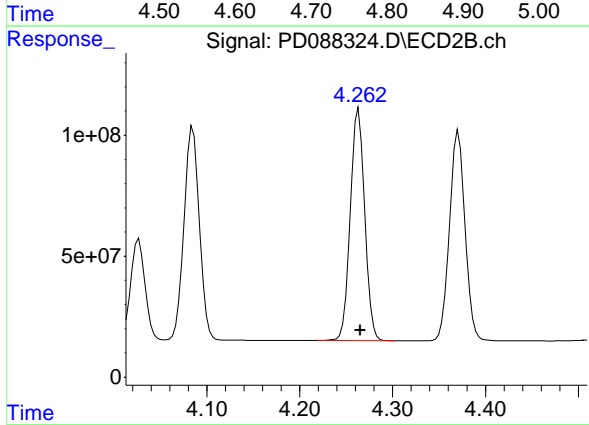
R.T.: 4.027 min
 Delta R.T.: -0.002 min
 Response: 455731518
 Conc: 49.25 ng/ml



#7 delta-BHC

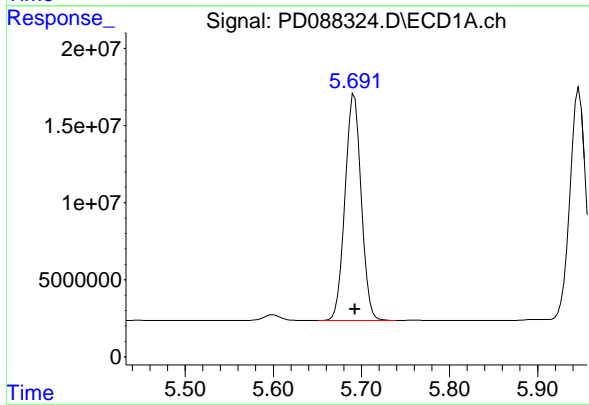
R.T.: 4.764 min
 Delta R.T.: 0.000 min
 Response: 220877435
 Conc: 53.55 ng/ml

Instrument :
 ECD_D
 ClientSampleId :
 PB167777BS



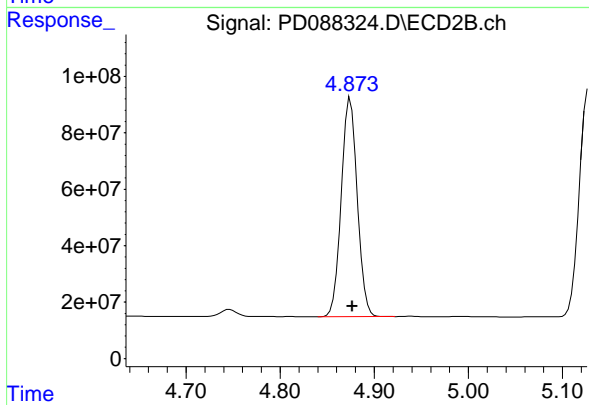
#7 delta-BHC

R.T.: 4.263 min
 Delta R.T.: -0.002 min
 Response: 1036471147
 Conc: 48.75 ng/ml



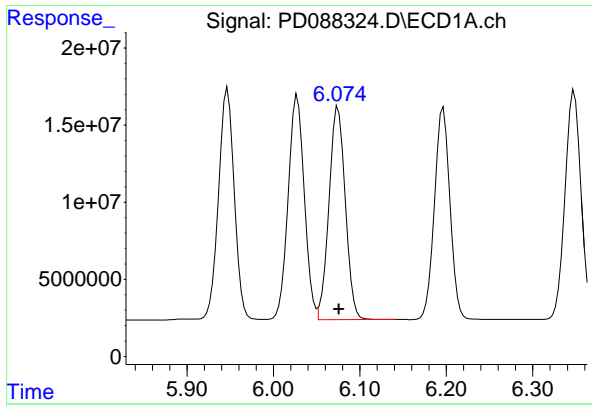
#8 Heptachlor epoxide

R.T.: 5.692 min
 Delta R.T.: 0.000 min
 Response: 187749215
 Conc: 52.53 ng/ml



#8 Heptachlor epoxide

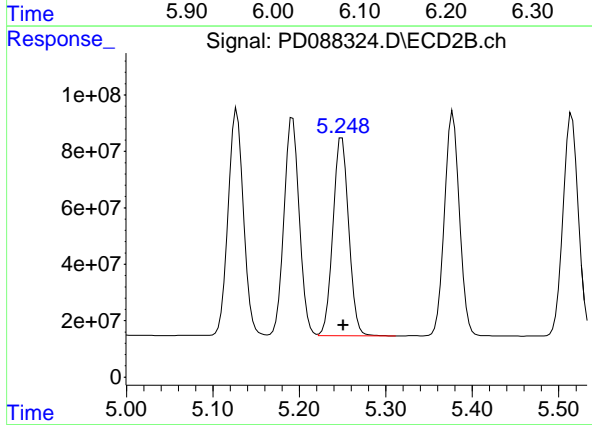
R.T.: 4.875 min
 Delta R.T.: -0.002 min
 Response: 916646787
 Conc: 48.51 ng/ml



#9 Endosulfan I

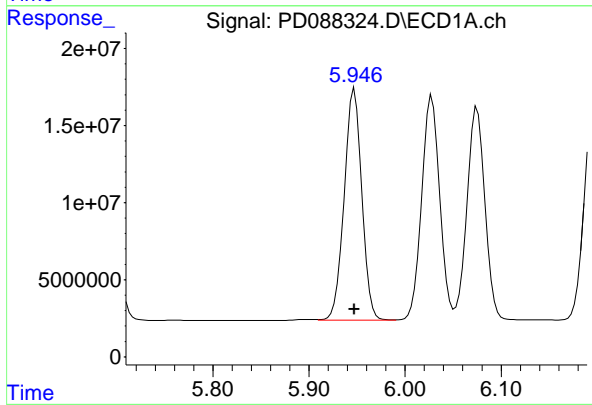
R.T.: 6.075 min
 Delta R.T.: 0.000 min
 Response: 178740523
 Conc: 52.93 ng/ml

Instrument :
 ECD_D
 ClientSampleId :
 PB167777BS



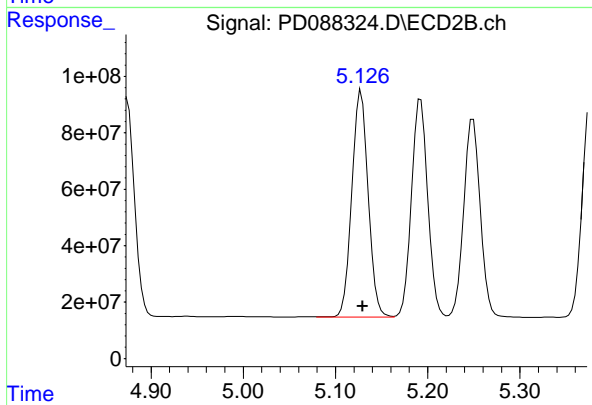
#9 Endosulfan I

R.T.: 5.249 min
 Delta R.T.: -0.002 min
 Response: 876828406
 Conc: 48.68 ng/ml



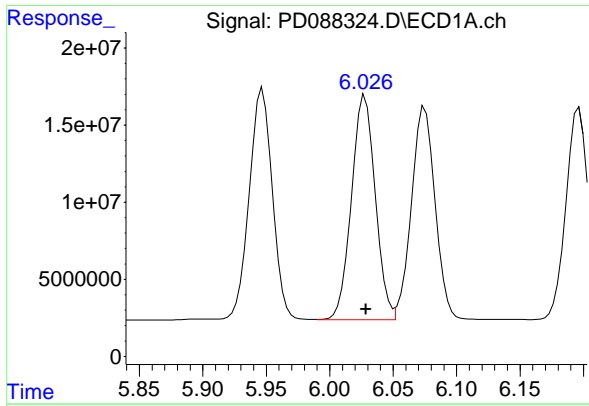
#10 gamma-Chlordane

R.T.: 5.947 min
 Delta R.T.: 0.000 min
 Response: 190222919
 Conc: 52.52 ng/ml



#10 gamma-Chlordane

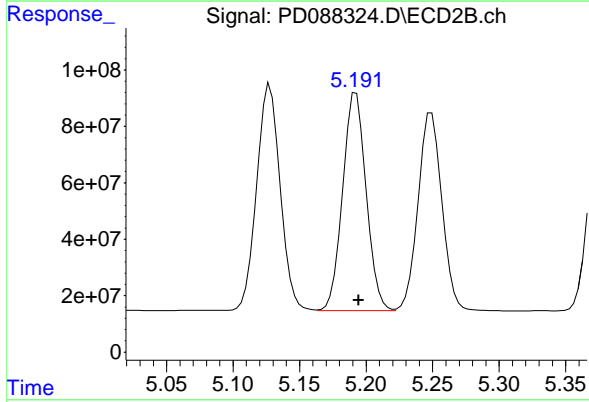
R.T.: 5.128 min
 Delta R.T.: -0.002 min
 Response: 990215807
 Conc: 48.79 ng/ml



#11 alpha-Chlordane

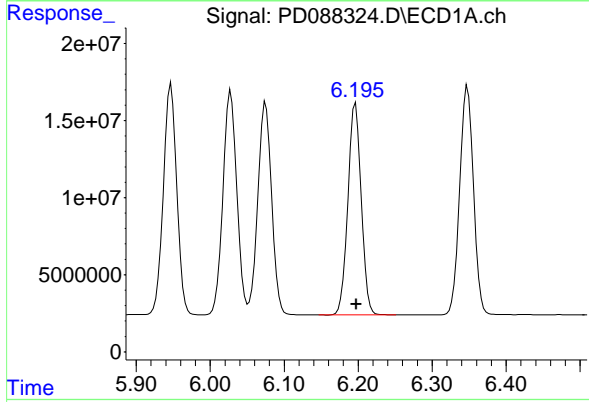
R.T.: 6.028 min
 Delta R.T.: 0.000 min
 Response: 189522166
 Conc: 52.51 ng/ml

Instrument :
 ECD_D
 ClientSampleId :
 PB167777BS



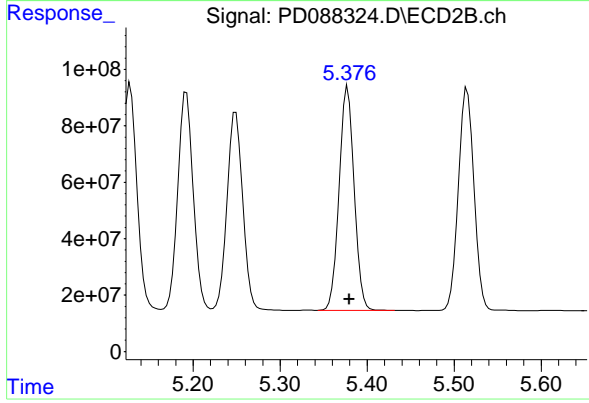
#11 alpha-Chlordane

R.T.: 5.192 min
 Delta R.T.: -0.002 min
 Response: 951252351
 Conc: 48.53 ng/ml



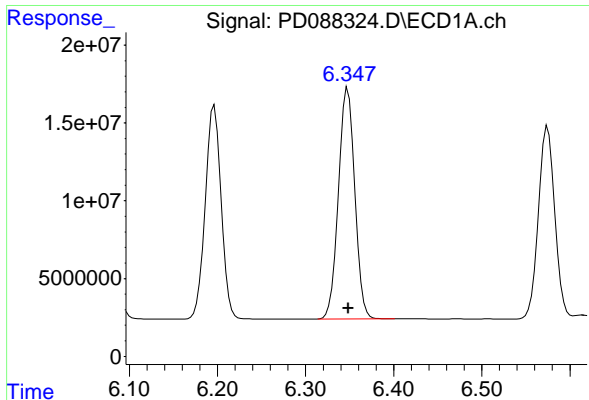
#12 4,4'-DDE

R.T.: 6.196 min
 Delta R.T.: 0.000 min
 Response: 171918516
 Conc: 52.12 ng/ml



#12 4,4'-DDE

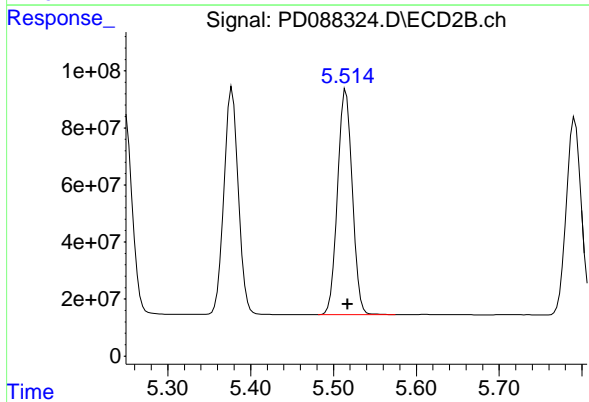
R.T.: 5.378 min
 Delta R.T.: -0.002 min
 Response: 956537680
 Conc: 48.57 ng/ml



#13 Dieldrin

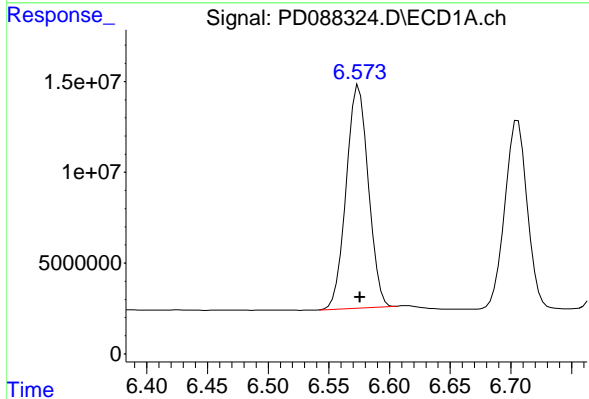
R.T.: 6.348 min
 Delta R.T.: 0.000 min
 Response: 191844818
 Conc: 53.76 ng/ml

Instrument :
 ECD_D
 ClientSampleId :
 PB167777BS



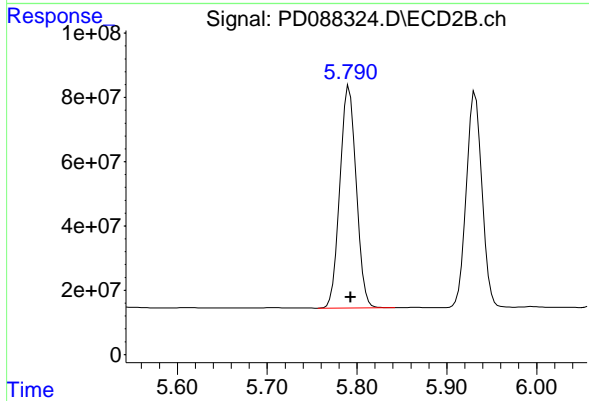
#13 Dieldrin

R.T.: 5.515 min
 Delta R.T.: -0.002 min
 Response: 976103015
 Conc: 48.97 ng/ml



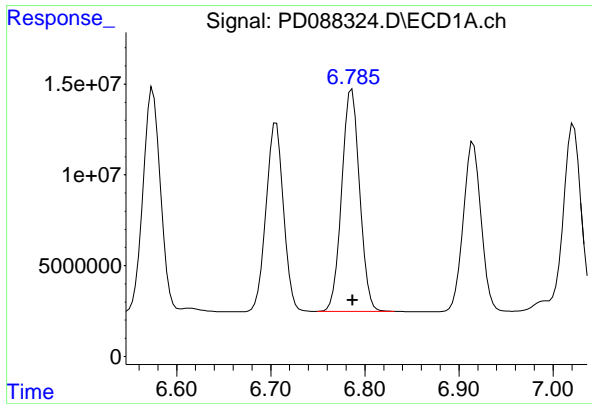
#14 Endrin

R.T.: 6.575 min
 Delta R.T.: -0.001 min
 Response: 156299478
 Conc: 52.40 ng/ml



#14 Endrin

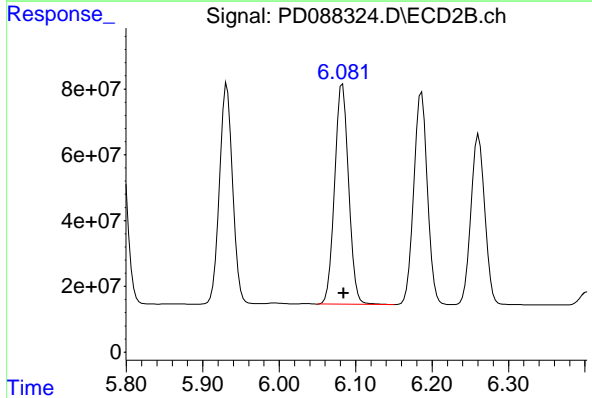
R.T.: 5.791 min
 Delta R.T.: -0.002 min
 Response: 870594702
 Conc: 47.83 ng/ml



#15 Endosulfan II

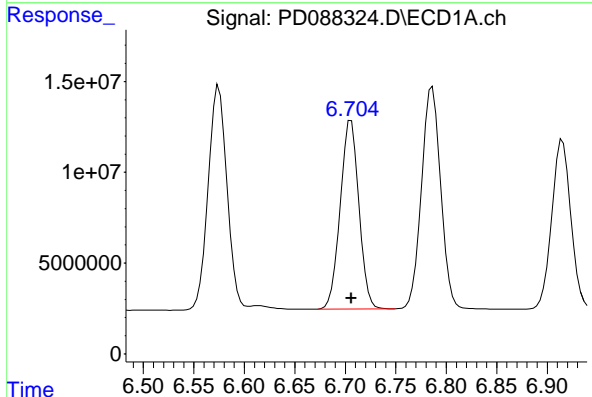
R.T.: 6.786 min
 Delta R.T.: 0.000 min
 Response: 161922012
 Conc: 51.79 ng/ml

Instrument :
 ECD_D
 ClientSampleId :
 PB16777BS



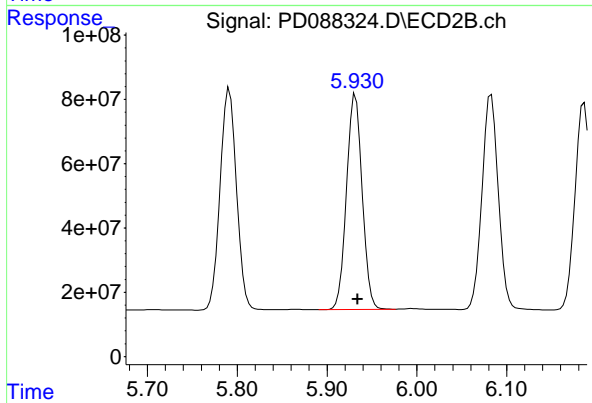
#15 Endosulfan II

R.T.: 6.083 min
 Delta R.T.: -0.002 min
 Response: 849108718
 Conc: 48.46 ng/ml



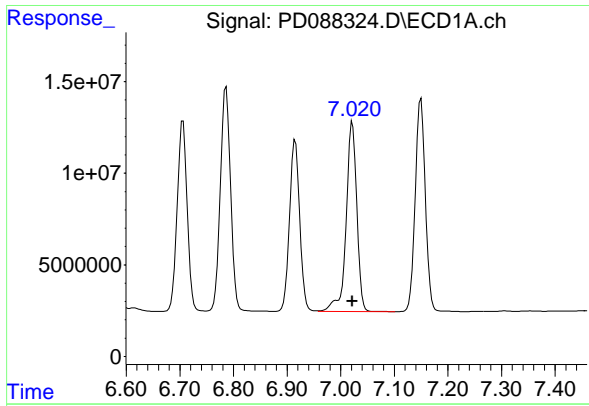
#16 4,4'-DDD

R.T.: 6.706 min
 Delta R.T.: 0.000 min
 Response: 133960786
 Conc: 53.27 ng/ml



#16 4,4'-DDD

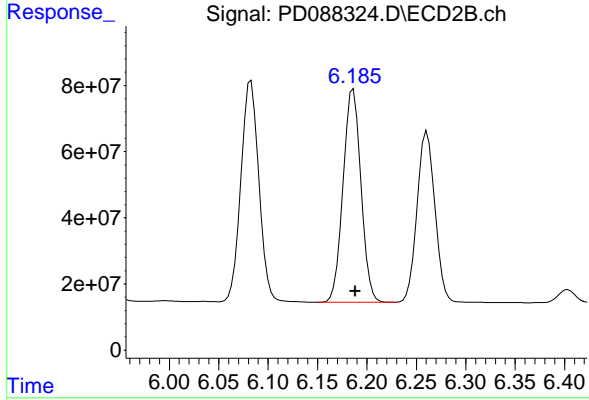
R.T.: 5.932 min
 Delta R.T.: -0.002 min
 Response: 808731648
 Conc: 49.35 ng/ml



#17 4,4'-DDT

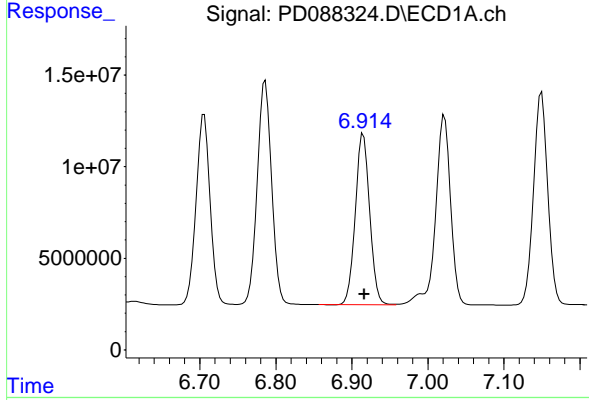
R.T.: 7.022 min
 Delta R.T.: 0.000 min
 Response: 142843765
 Conc: 51.43 ng/ml

Instrument :
 ECD_D
 ClientSampleId :
 PB167777BS



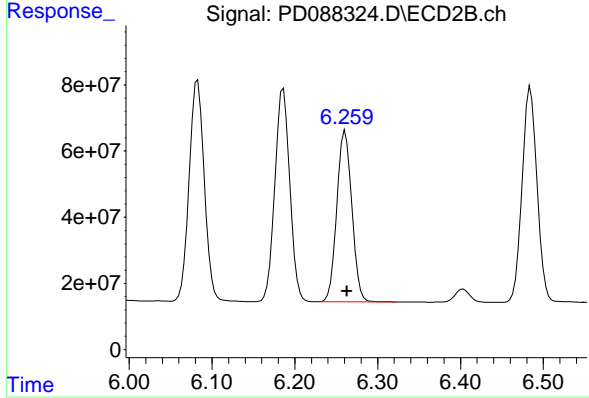
#17 4,4'-DDT

R.T.: 6.186 min
 Delta R.T.: -0.002 min
 Response: 811300412
 Conc: 47.68 ng/ml



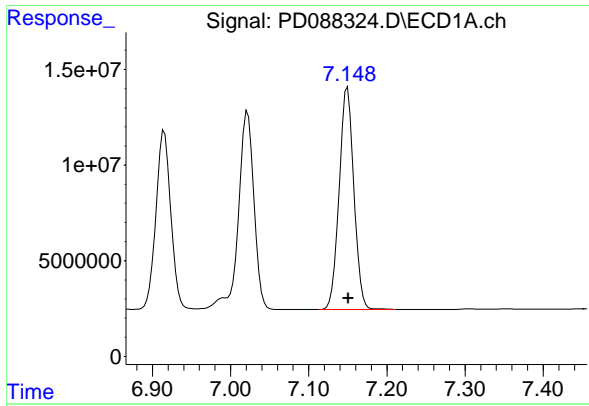
#18 Endrin aldehyde

R.T.: 6.915 min
 Delta R.T.: 0.000 min
 Response: 123345229
 Conc: 53.44 ng/ml



#18 Endrin aldehyde

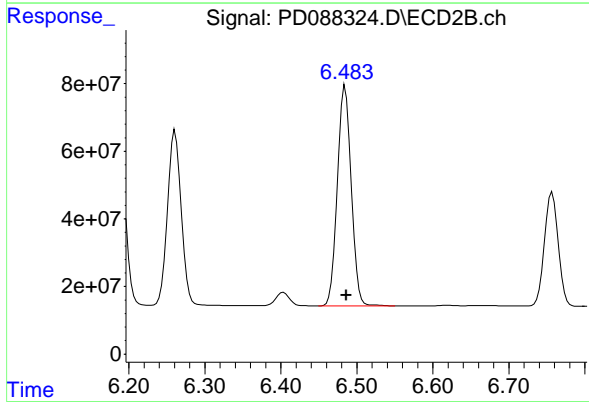
R.T.: 6.261 min
 Delta R.T.: -0.002 min
 Response: 651565590
 Conc: 48.99 ng/ml



#19 Endosulfan Sulfate

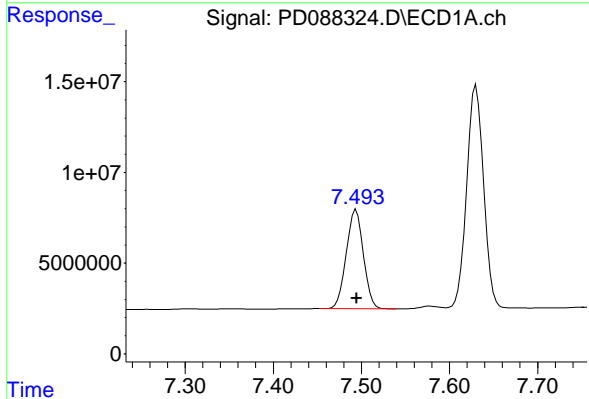
R.T.: 7.150 min
 Delta R.T.: 0.000 min
 Response: 152049617
 Conc: 52.87 ng/ml

Instrument :
 ECD_D
 ClientSampleId :
 PB167777BS



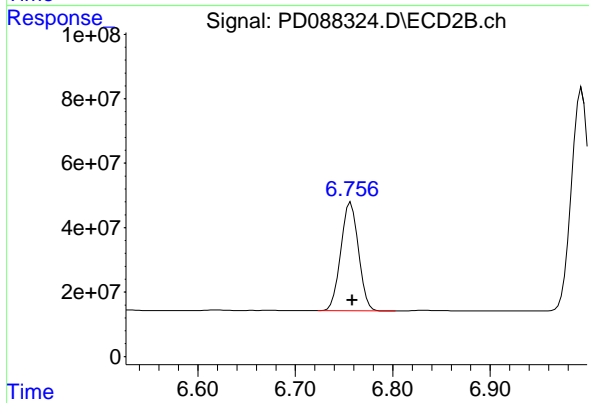
#19 Endosulfan Sulfate

R.T.: 6.484 min
 Delta R.T.: -0.002 min
 Response: 819566051
 Conc: 47.83 ng/ml



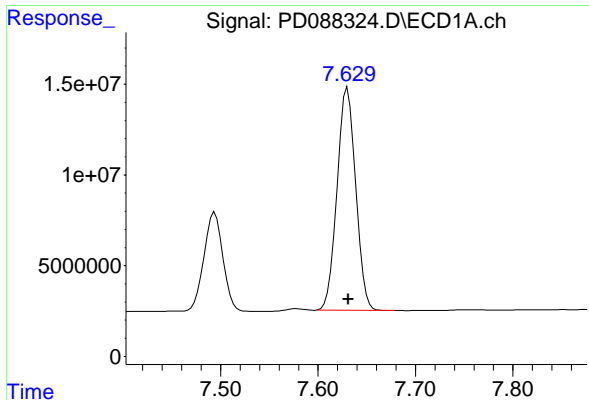
#20 Methoxychlor

R.T.: 7.494 min
 Delta R.T.: 0.000 min
 Response: 74000794
 Conc: 49.35 ng/ml



#20 Methoxychlor

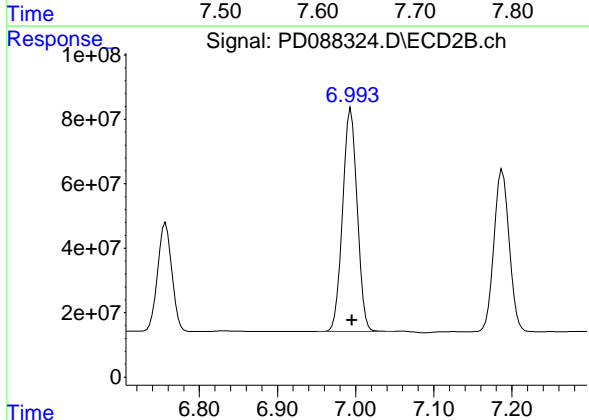
R.T.: 6.757 min
 Delta R.T.: -0.002 min
 Response: 423745809
 Conc: 46.46 ng/ml



#21 Endrin ketone

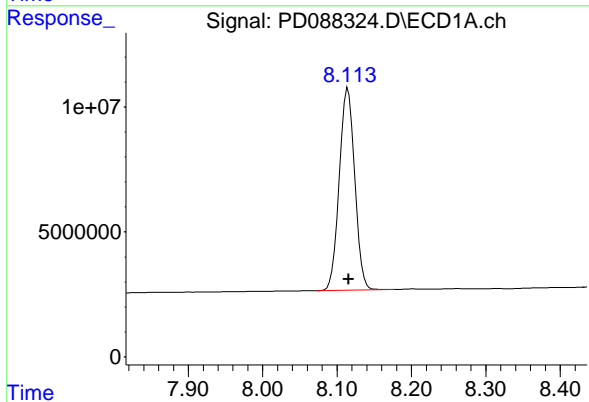
R.T.: 7.630 min
 Delta R.T.: -0.001 min
 Response: 162847012
 Conc: 52.76 ng/ml

Instrument :
 ECD_D
 ClientSampleId :
 PB167777BS



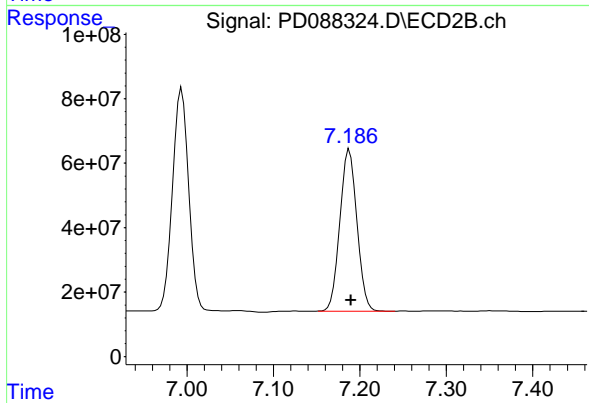
#21 Endrin ketone

R.T.: 6.994 min
 Delta R.T.: -0.001 min
 Response: 897719954
 Conc: 48.00 ng/ml



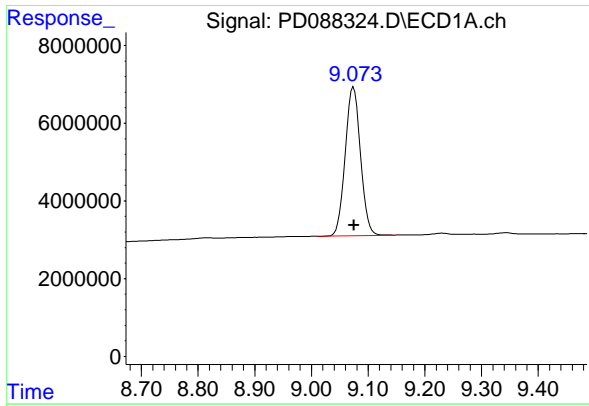
#22 Mirex

R.T.: 8.115 min
 Delta R.T.: 0.000 min
 Response: 117170978
 Conc: 49.90 ng/ml



#22 Mirex

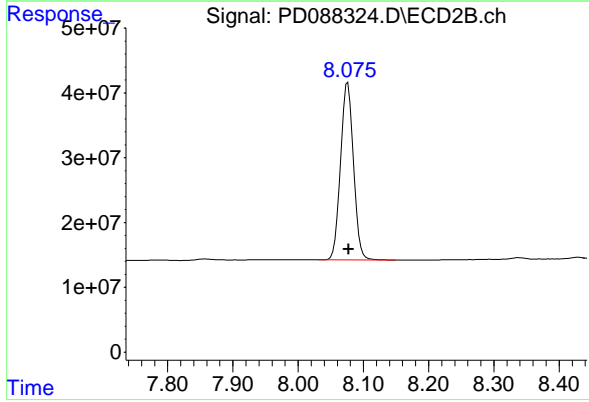
R.T.: 7.188 min
 Delta R.T.: -0.002 min
 Response: 681910356
 Conc: 46.01 ng/ml



#28 Decachlorobiphenyl

R.T.: 9.074 min
Delta R.T.: 0.000 min
Response: 71576213
Conc: 21.64 ng/ml

Instrument :
ECD_D
ClientSampleId :
PB167777BS



#28 Decachlorobiphenyl

R.T.: 8.076 min
Delta R.T.: 0.000 min
Response: 378088529
Conc: 20.46 ng/ml