

Data Path : Z:\pestpcbsrv\HPCHEM1\ECD\_D\Data\PD042925\  
 Data File : PD088332.D  
 Signal(s) : Signal #1: ECD1A.ch Signal #2: ECD2B.ch  
 Acq On : 29 Apr 2025 15:04  
 Operator : AR\AJ  
 Sample : Q1903-01MSD  
 Misc :  
 ALS Vial : 14 Sample Multiplier: 1

**Instrument :**  
 ECD\_D  
**ClientSampleId :**  
 COMP-4MSD

**Manual Integrations**  
**APPROVED**  
 Reviewed By :Abdul Mirza 04/30/2025  
 Supervised By :mohammad ahmed 05/02/2025

Integration File signal 1: autoint1.e  
 Integration File signal 2: autoint2.e  
 Quant Time: Apr 30 00:49:19 2025  
 Quant Method : Z:\pestpcbsrv\HPCHEM1\ECD\_D\Method\PD041825.M  
 Quant Title : GC Extractables  
 QLast Update : Sat Apr 19 06:32:27 2025  
 Response via : Initial Calibration  
 Integrator: ChemStation

Volume Inj. : 1 µl  
 Signal #1 Phase : ZB-MR2 Signal #2 Phase: ZB-MR2  
 Signal #1 Info : 30M x 0.32mm x0.5 Signal #2 Info : 30M x 0.32mm x 0.25µm

Compound	RT#1	RT#2	Resp#1	Resp#2	ng/ml	ng/ml
-----						
System Monitoring Compounds						
1) SA Tetrachlo...	3.550	2.882	33523434	256.2E6	16.784	17.521
28) SA Decachlor...	9.074	8.076	54788152	281.0E6	16.562	15.205
Target Compounds						
2) A alpha-BHC	3.999	3.395	200.4E6	1009.5E6	46.477	44.159
3) MA gamma-BHC...	4.330	3.731	196.0E6	935.2E6	46.808	43.420
4) MA Heptachlor	4.930	4.085	187.4E6	916.8E6	46.405	42.844
5) MB Aldrin	5.271	4.371	187.6E6	911.4E6	47.506	43.810
6) B beta-BHC	4.515	4.027	75227755	416.0E6	46.340	44.948
7) B delta-BHC	4.763	4.264	196.4E6	934.5E6	47.622	43.954
8) B Heptachlo...	5.691	4.875	168.9E6	826.7E6	47.249	43.756
9) A Endosulfan I	6.075	5.249	160.3E6	788.1E6	47.464	43.754
10) B gamma-Chl...	5.946	5.128	169.3E6	888.5E6	46.739	43.775
11) B alpha-Chl...	6.027	5.193	170.2E6	858.3E6	47.140	43.782
12) B 4,4'-DDE	6.196	5.378	152.9E6	860.0E6	46.361	43.670
13) MA Dieldrin	6.347	5.515	170.9E6	869.8E6	47.892	43.636
14) MA Endrin	6.575	5.792	141.1E6	805.0E6	47.305	44.227
15) B Endosulfa...	6.786	6.081	143.4E6	753.5E6	45.873	43.004m
16) A 4,4'-DDD	6.705	5.932	121.8E6	705.5E6	48.434	43.052
17) MA 4,4'-DDT	7.022	6.186	115.5E6	717.1E6	41.590	42.144
18) B Endrin al...	6.915	6.261	109.3E6	589.2E6	47.340	44.298
19) B Endosulfa...	7.150	6.485	132.0E6	731.7E6	45.898	42.706
20) A Methoxychlor	7.494	6.758	63975403	372.3E6	42.663	40.823
21) B Endrin ke...	7.630	6.994	141.9E6	792.7E6	45.976	42.380
22) Mirex	8.114	7.188	103.1E6	608.6E6	43.890	41.061

(f)=RT Delta > 1/2 Window (#)=Amounts differ by > 25% (m)=manual int.

Data Path : Z:\pestpcbsrv\HPCHEM1\ECD\_D\Data\PD042925\  
 Data File : PD088332.D  
 Signal(s) : Signal #1: ECD1A.ch Signal #2: ECD2B.ch  
 Acq On : 29 Apr 2025 15:04  
 Operator : AR\AJ  
 Sample : Q1903-01MSD  
 Misc :  
 ALS Vial : 14 Sample Multiplier: 1

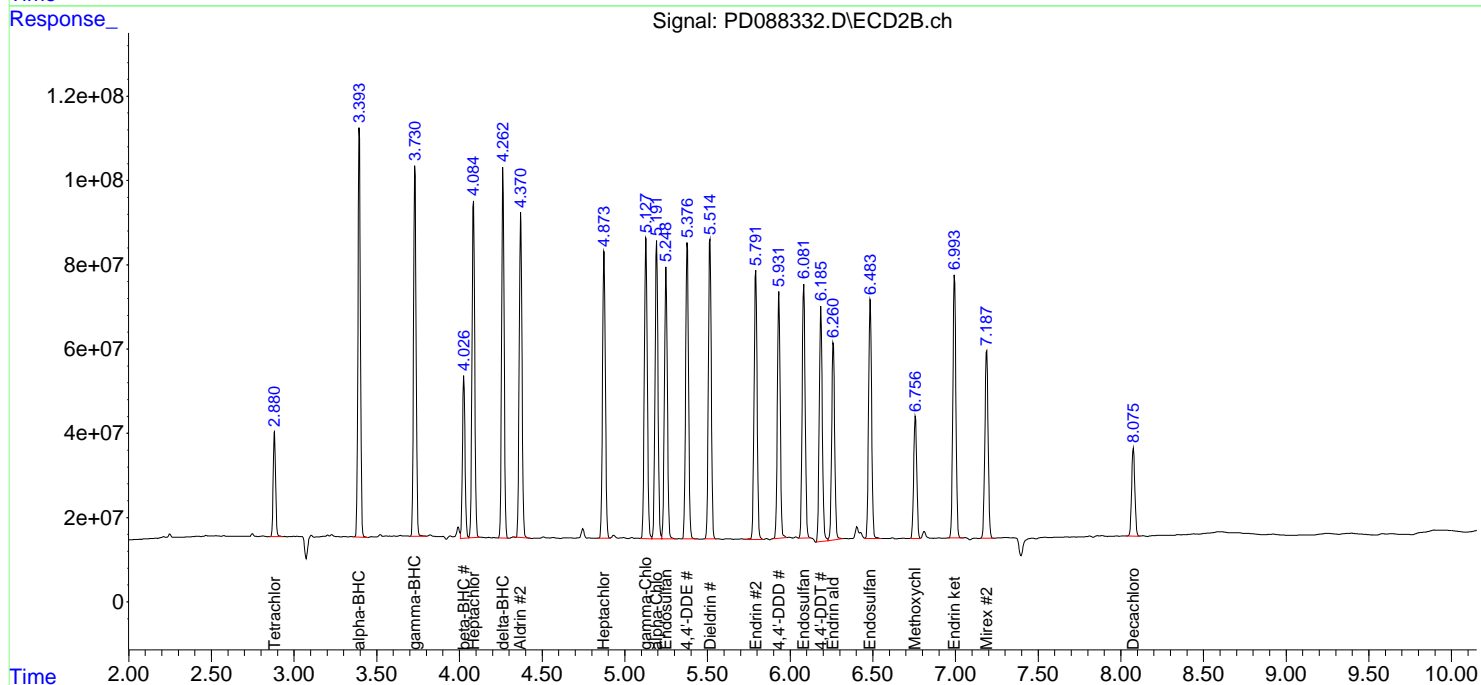
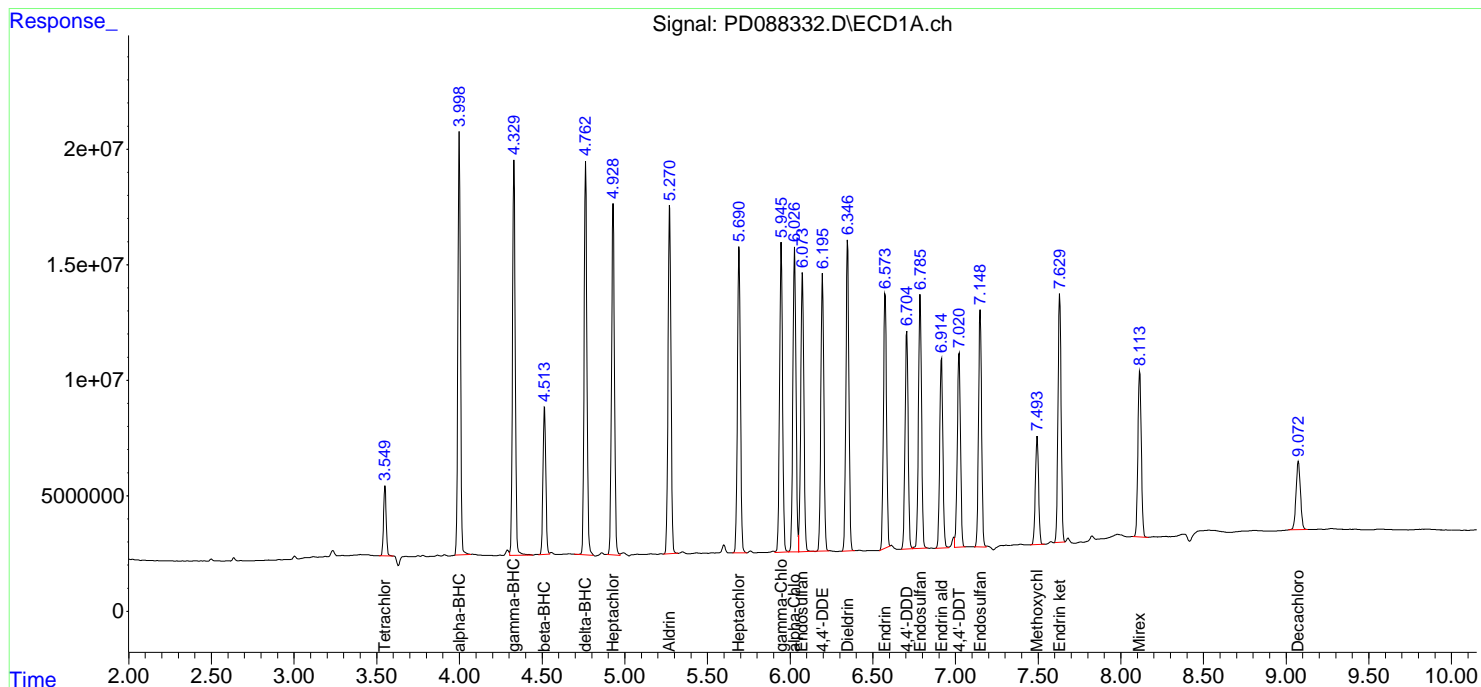
Instrument :  
 ECD\_D  
 ClientSampleId :  
 COMP-4MSD

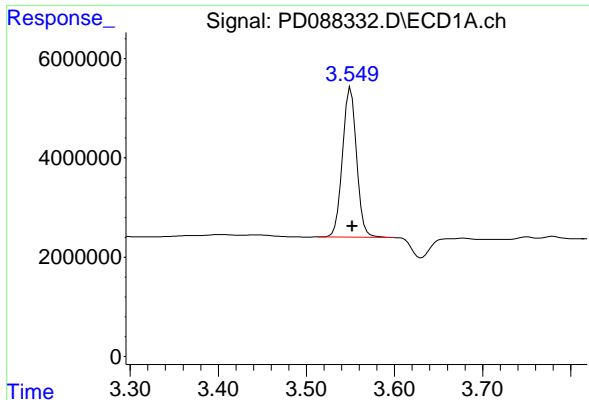
Manual Integrations  
 APPROVED

Reviewed By :Abdul Mirza 04/30/2025  
 Supervised By :mohammad ahmed 05/02/2025

Integration File signal 1: autoint1.e  
 Integration File signal 2: autoint2.e  
 Quant Time: Apr 30 00:49:19 2025  
 Quant Method : Z:\pestpcbsrv\HPCHEM1\ECD\_D\Method\PD041825.M  
 Quant Title : GC Extractables  
 QLast Update : Sat Apr 19 06:32:27 2025  
 Response via : Initial Calibration  
 Integrator: ChemStation

Volume Inj. : 1 µl  
 Signal #1 Phase : ZB-MR1 Signal #2 Phase: ZB-MR2  
 Signal #1 Info : 30M x 0.32mm x0.5 Signal #2 Info : 30M x 0.32mm x 0.25µm





#1 Tetrachloro-m-xylene

R.T.: 3.550 min  
 Delta R.T.: -0.002 min  
 Response: 33523434  
 Conc: 16.78 ng/ml

Instrument :

ECD\_D

ClientSampleId :

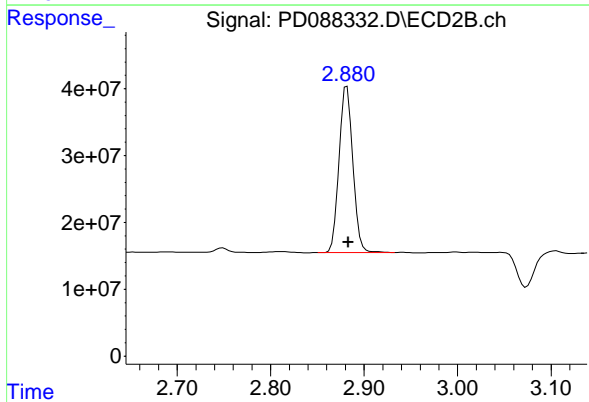
COMP-4MSD

Manual Integrations

APPROVED

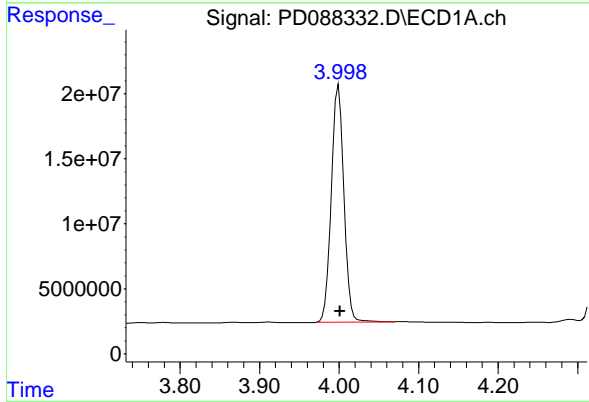
Reviewed By :Abdul Mirza 04/30/2025

Supervised By :mohammad ahmed 05/02/2025



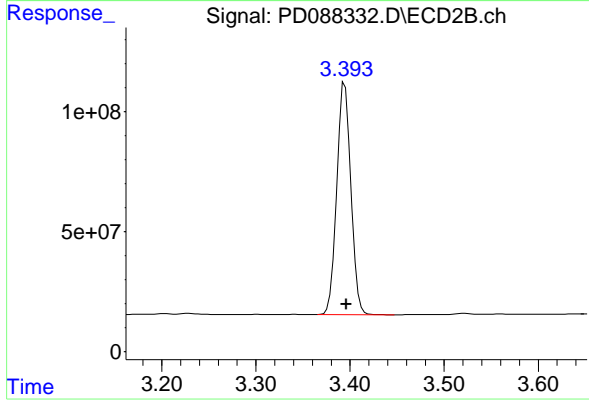
#1 Tetrachloro-m-xylene

R.T.: 2.882 min  
 Delta R.T.: -0.001 min  
 Response: 256186637  
 Conc: 17.52 ng/ml



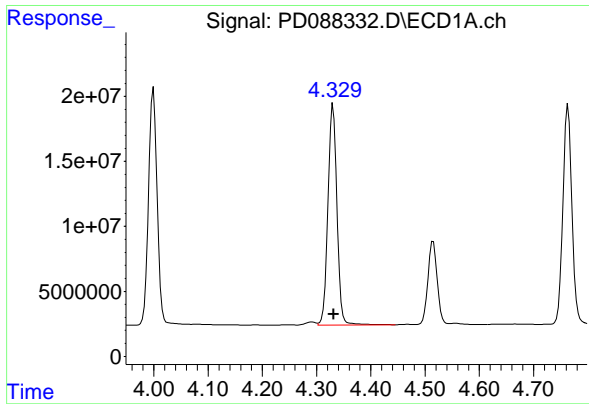
#2 alpha-BHC

R.T.: 3.999 min  
 Delta R.T.: -0.002 min  
 Response: 200409312  
 Conc: 46.48 ng/ml



#2 alpha-BHC

R.T.: 3.395 min  
 Delta R.T.: -0.002 min  
 Response: 1009534255  
 Conc: 44.16 ng/ml



#3 gamma-BHC (Lindane)

R.T.: 4.330 min  
 Delta R.T.: -0.002 min  
 Response: 196008379  
 Conc: 46.81 ng/ml

Instrument :

ECD\_D

Client Sample Id :

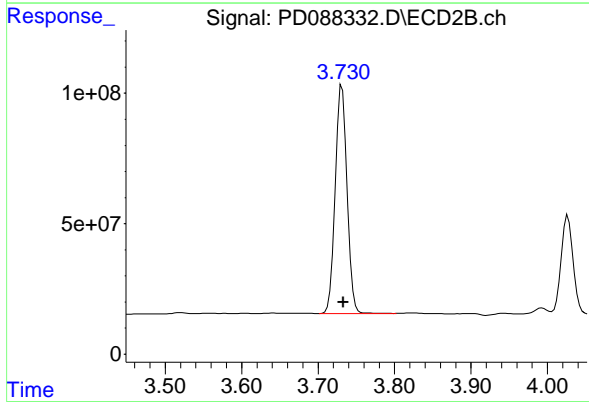
COMP-4MSD

Manual Integrations

APPROVED

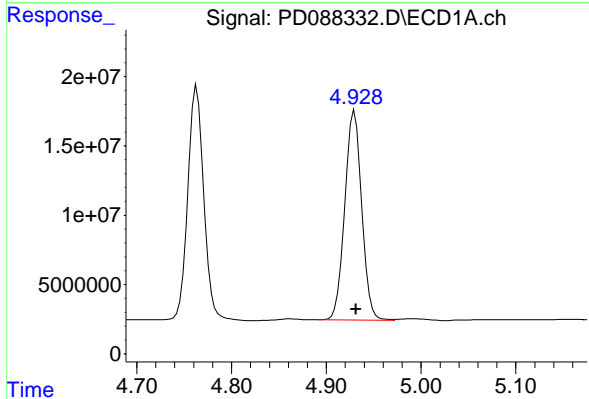
Reviewed By :Abdul Mirza 04/30/2025

Supervised By :mohammad ahmed 05/02/2025



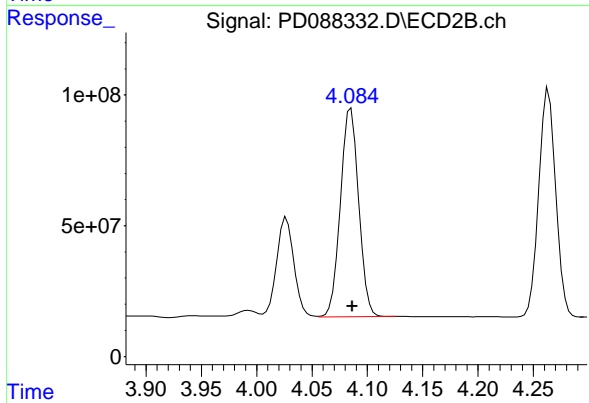
#3 gamma-BHC (Lindane)

R.T.: 3.731 min  
 Delta R.T.: -0.002 min  
 Response: 935220458  
 Conc: 43.42 ng/ml



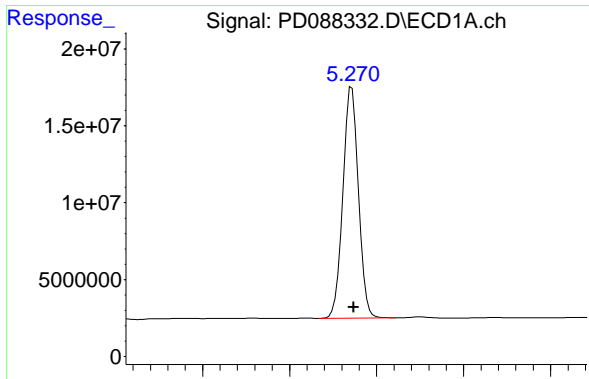
#4 Heptachlor

R.T.: 4.930 min  
 Delta R.T.: -0.002 min  
 Response: 187425717  
 Conc: 46.40 ng/ml



#4 Heptachlor

R.T.: 4.085 min  
 Delta R.T.: -0.001 min  
 Response: 916777031  
 Conc: 42.84 ng/ml



#5 Aldrin

R.T.: 5.271 min  
 Delta R.T.: -0.002 min  
 Response: 187629160  
 Conc: 47.51 ng/ml

Instrument :

ECD\_D

Client Sample Id :

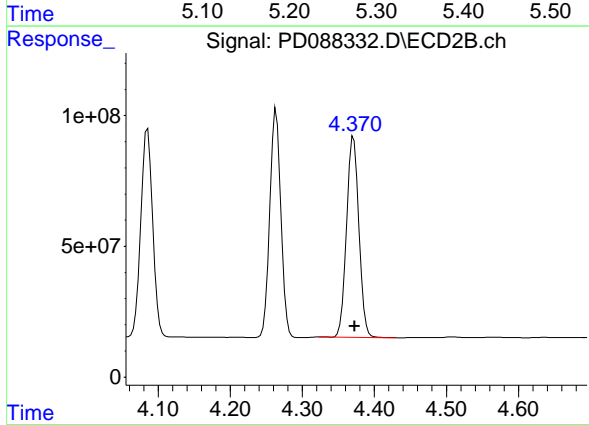
COMP-4MSD

Manual Integrations

APPROVED

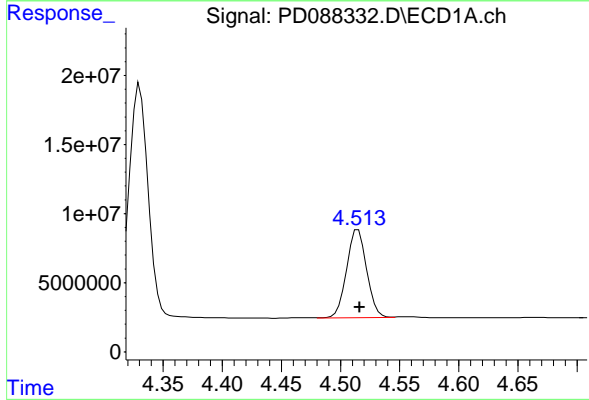
Reviewed By :Abdul Mirza 04/30/2025

Supervised By :mohammad ahmed 05/02/2025



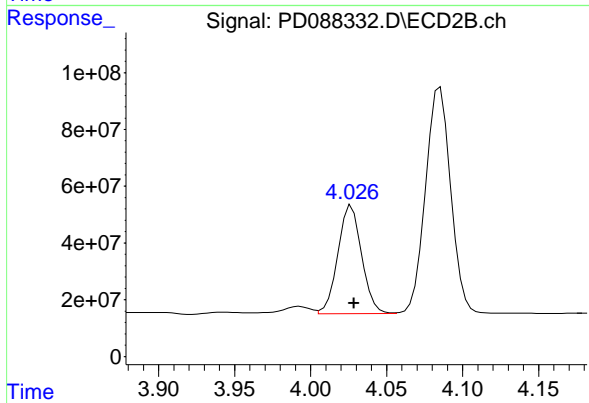
#5 Aldrin

R.T.: 4.371 min  
 Delta R.T.: -0.002 min  
 Response: 911363797  
 Conc: 43.81 ng/ml



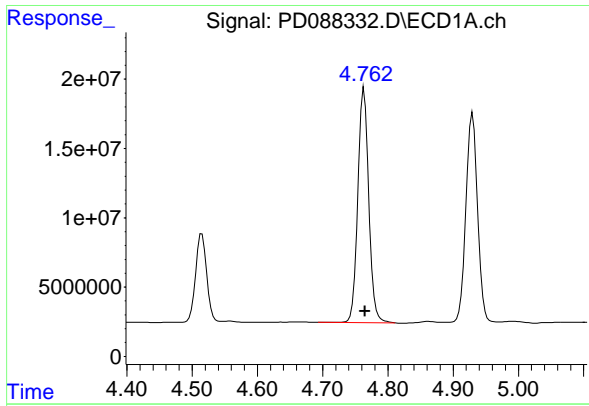
#6 beta-BHC

R.T.: 4.515 min  
 Delta R.T.: -0.001 min  
 Response: 75227755  
 Conc: 46.34 ng/ml



#6 beta-BHC

R.T.: 4.027 min  
 Delta R.T.: -0.001 min  
 Response: 415955720  
 Conc: 44.95 ng/ml



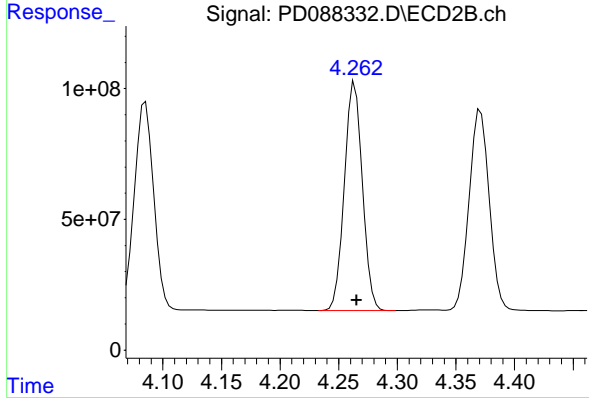
#7 delta-BHC

R.T.: 4.763 min  
 Delta R.T.: -0.002 min  
 Response: 196440976  
 Conc: 47.62 ng/ml

Instrument :  
 ECD\_D  
 ClientSampleId :  
 COMP-4MSD

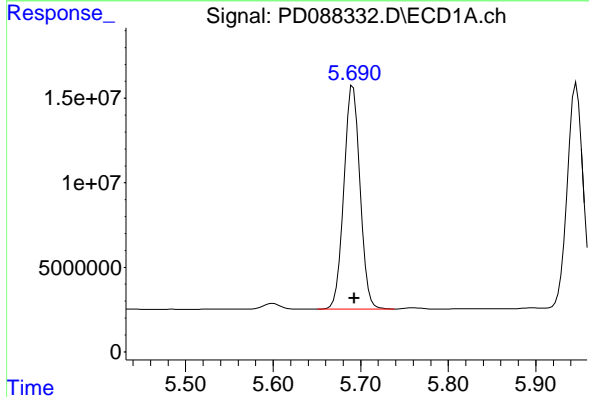
Manual Integrations  
 APPROVED

Reviewed By :Abdul Mirza 04/30/2025  
 Supervised By :mohammad ahmed 05/02/2025



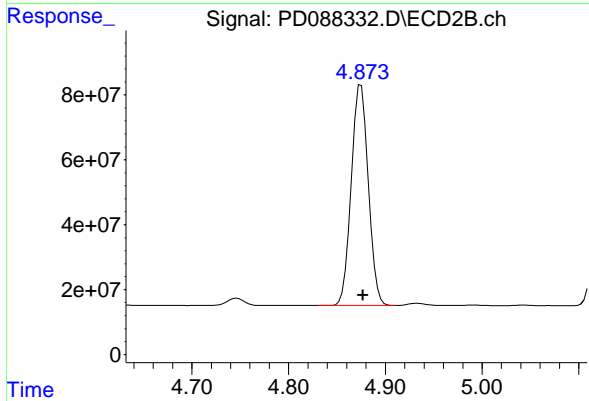
#7 delta-BHC

R.T.: 4.264 min  
 Delta R.T.: -0.002 min  
 Response: 934538681  
 Conc: 43.95 ng/ml



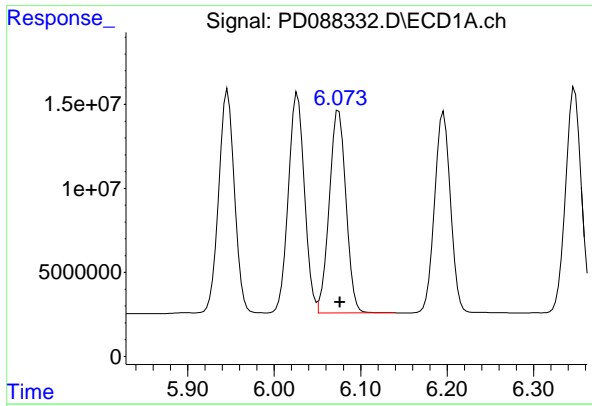
#8 Heptachlor epoxide

R.T.: 5.691 min  
 Delta R.T.: -0.001 min  
 Response: 168865965  
 Conc: 47.25 ng/ml



#8 Heptachlor epoxide

R.T.: 4.875 min  
 Delta R.T.: -0.002 min  
 Response: 826740426  
 Conc: 43.76 ng/ml



#9 Endosulfan I

R.T.: 6.075 min  
 Delta R.T.: -0.001 min  
 Response: 160292510  
 Conc: 47.46 ng/ml

Instrument :

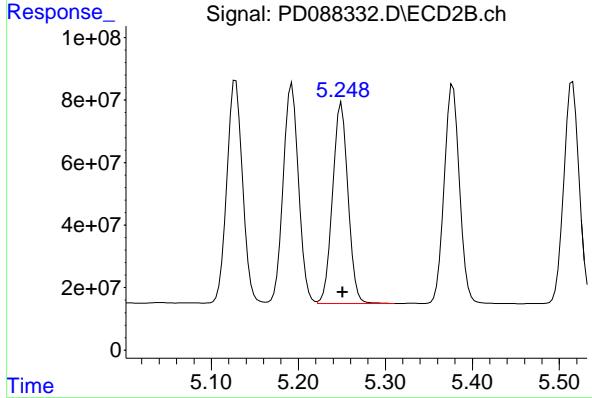
ECD\_D

ClientSampleId :

COMP-4MSD

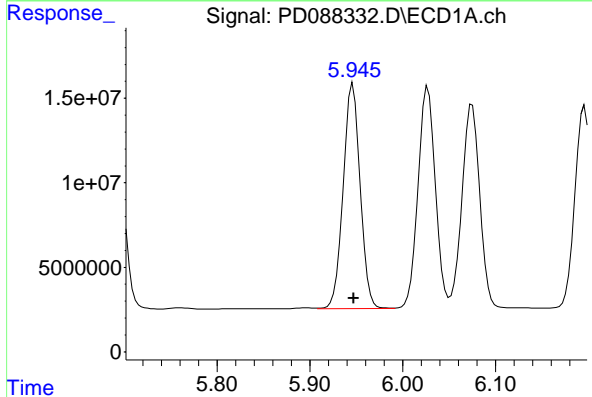
Manual Integrations  
 APPROVED

Reviewed By :Abdul Mirza 04/30/2025  
 Supervised By :mohammad ahmed 05/02/2025



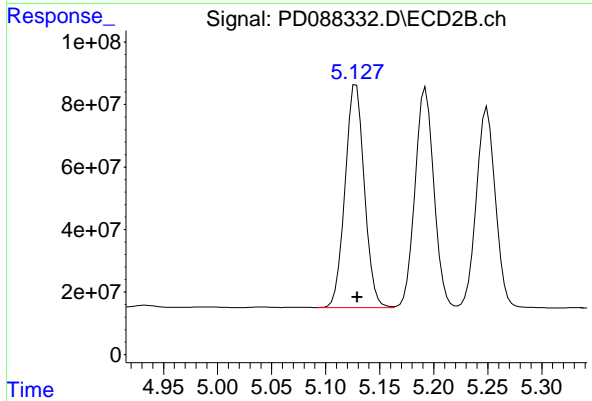
#9 Endosulfan I

R.T.: 5.249 min  
 Delta R.T.: -0.002 min  
 Response: 788111985  
 Conc: 43.75 ng/ml



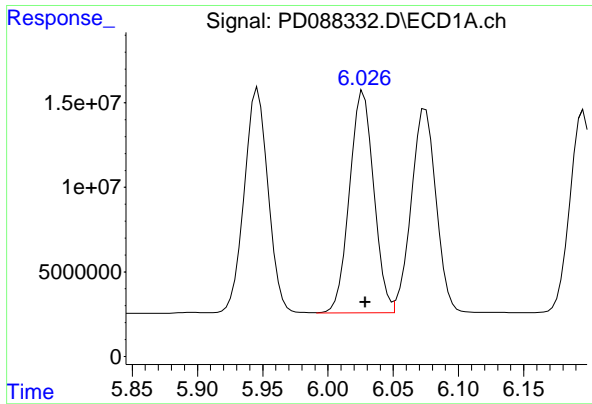
#10 gamma-Chlordane

R.T.: 5.946 min  
 Delta R.T.: 0.000 min  
 Response: 169289561  
 Conc: 46.74 ng/ml



#10 gamma-Chlordane

R.T.: 5.128 min  
 Delta R.T.: -0.001 min  
 Response: 888455757  
 Conc: 43.77 ng/ml



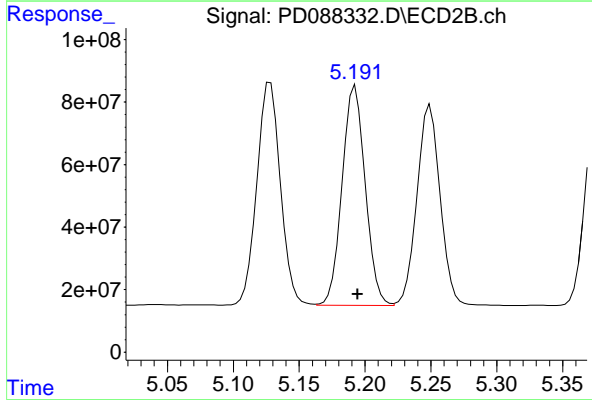
#11 alpha-Chlordane

R.T.: 6.027 min  
 Delta R.T.: -0.002 min  
 Response: 170156004  
 Conc: 47.14 ng/ml

Instrument :  
 ECD\_D  
 Client Sample Id :  
 COMP-4MSD

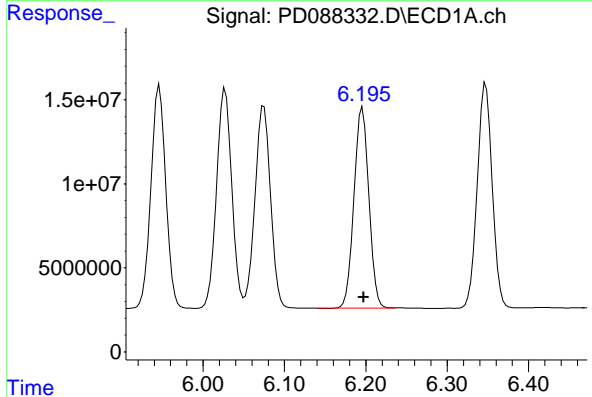
Manual Integrations  
 APPROVED

Reviewed By :Abdul Mirza 04/30/2025  
 Supervised By :mohammad ahmed 05/02/2025



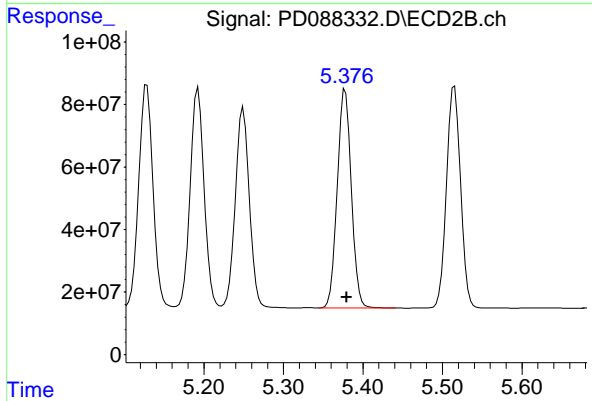
#11 alpha-Chlordane

R.T.: 5.193 min  
 Delta R.T.: -0.002 min  
 Response: 858250999  
 Conc: 43.78 ng/ml



#12 4,4'-DDE

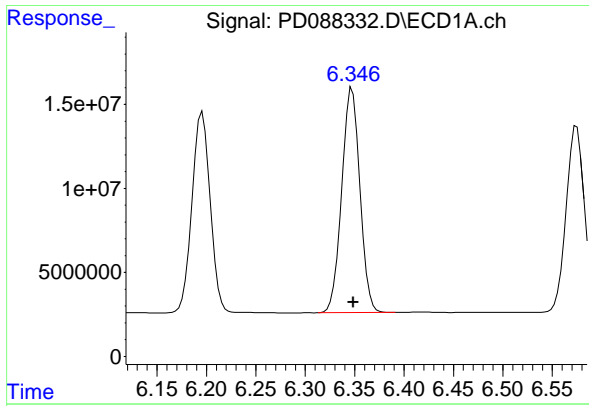
R.T.: 6.196 min  
 Delta R.T.: -0.001 min  
 Response: 152909725  
 Conc: 46.36 ng/ml



#12 4,4'-DDE

R.T.: 5.378 min  
 Delta R.T.: -0.002 min  
 Response: 860034516  
 Conc: 43.67 ng/ml





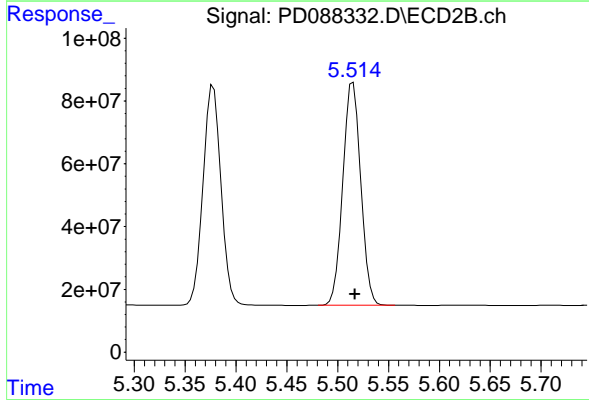
#13 Dieldrin

R.T.: 6.347 min  
 Delta R.T.: -0.001 min  
 Response: 170902176  
 Conc: 47.89 ng/ml

Instrument :  
 ECD\_D  
 Client Sample Id :  
 COMP-4MSD

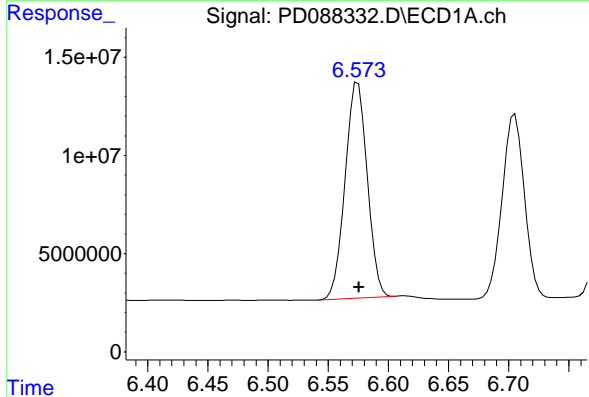
Manual Integrations  
 APPROVED

Reviewed By :Abdul Mirza 04/30/2025  
 Supervised By :mohammad ahmed 05/02/2025



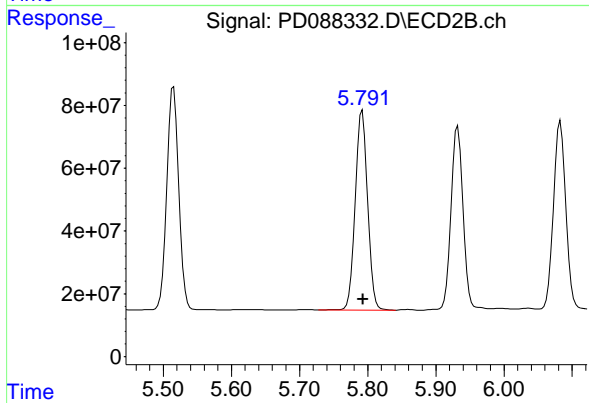
#13 Dieldrin

R.T.: 5.515 min  
 Delta R.T.: -0.002 min  
 Response: 869795203  
 Conc: 43.64 ng/ml



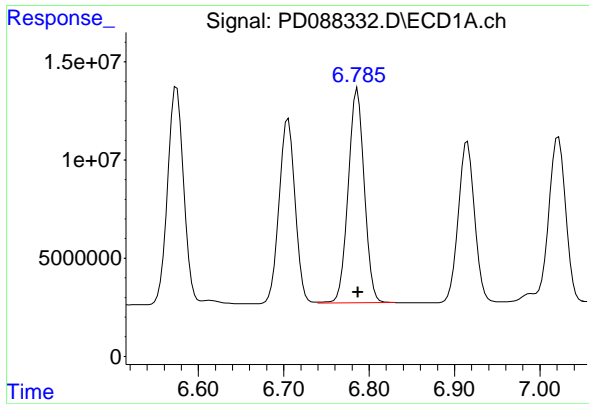
#14 Endrin

R.T.: 6.575 min  
 Delta R.T.: -0.001 min  
 Response: 141091416  
 Conc: 47.31 ng/ml



#14 Endrin

R.T.: 5.792 min  
 Delta R.T.: 0.000 min  
 Response: 805044265  
 Conc: 44.23 ng/ml



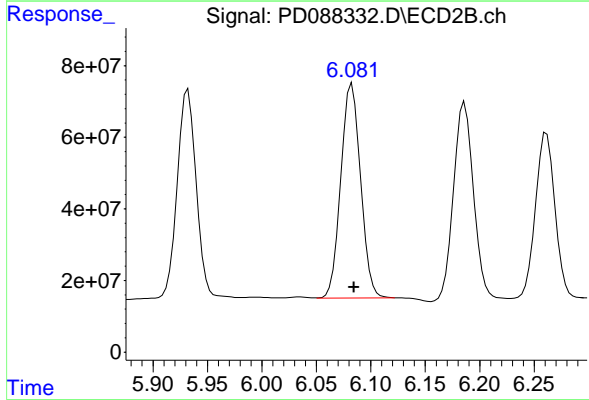
#15 Endosulfan II

R.T.: 6.786 min  
 Delta R.T.: 0.000 min  
 Response: 143409368  
 Conc: 45.87 ng/ml

Instrument :  
 ECD\_D  
 Client Sample Id :  
 COMP-4MSD

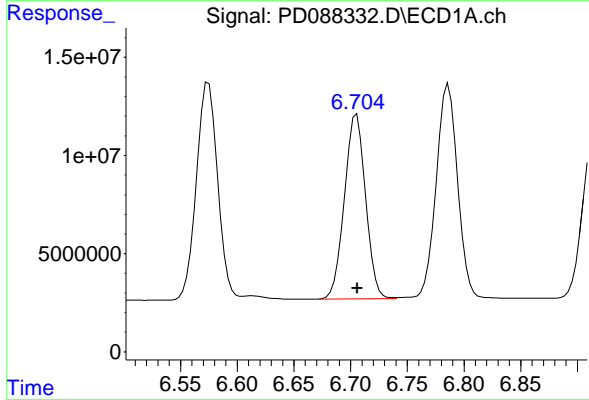
Manual Integrations  
 APPROVED

Reviewed By :Abdul Mirza 04/30/2025  
 Supervised By :mohammad ahmed 05/02/2025



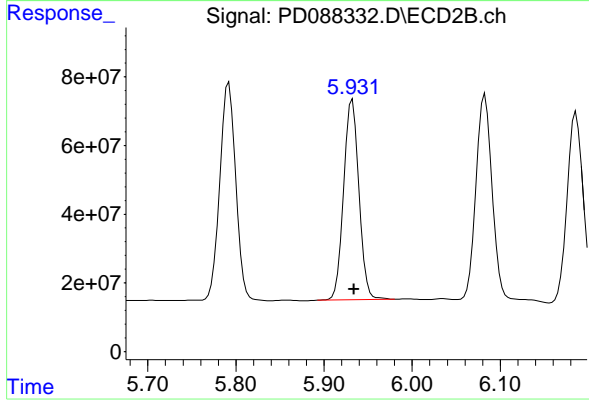
#15 Endosulfan II

R.T.: 6.081 min  
 Delta R.T.: -0.003 min  
 Response: 753493903  
 Conc: 43.00 ng/ml m



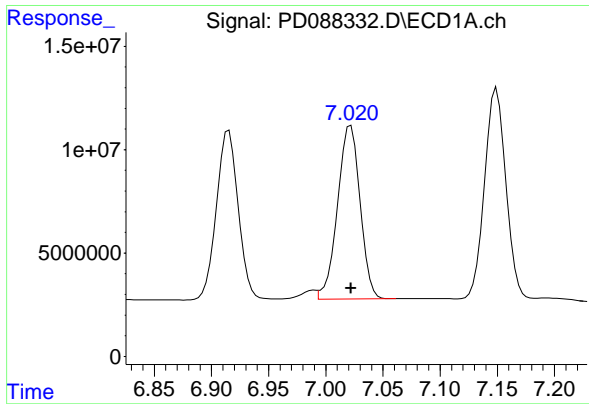
#16 4,4'-DDD

R.T.: 6.705 min  
 Delta R.T.: 0.000 min  
 Response: 121808628  
 Conc: 48.43 ng/ml



#16 4,4'-DDD

R.T.: 5.932 min  
 Delta R.T.: -0.002 min  
 Response: 705455174  
 Conc: 43.05 ng/ml



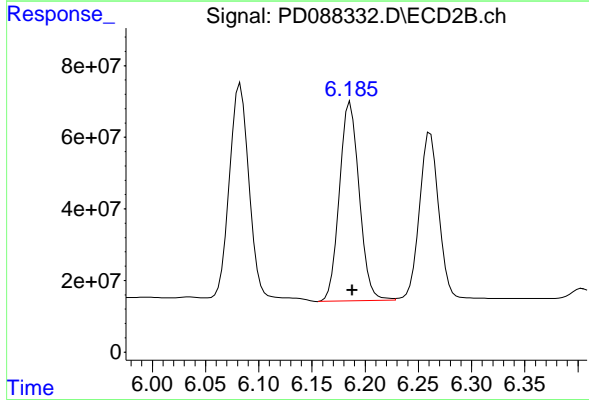
#17 4,4'-DDT

R.T.: 7.022 min  
 Delta R.T.: 0.000 min  
 Response: 115518672  
 Conc: 41.59 ng/ml

Instrument :  
 ECD\_D  
 ClientSampleId :  
 COMP-4MSD

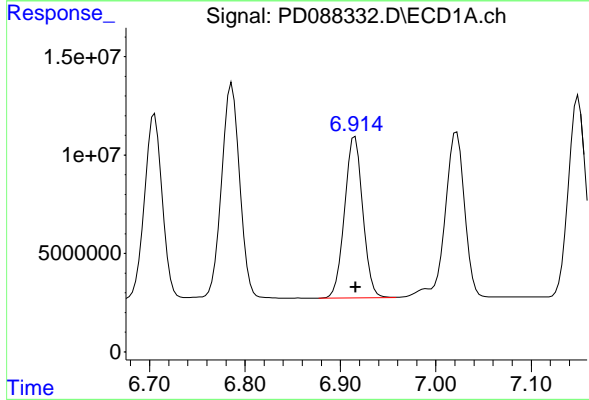
Manual Integrations  
 APPROVED

Reviewed By :Abdul Mirza 04/30/2025  
 Supervised By :mohammad ahmed 05/02/2025



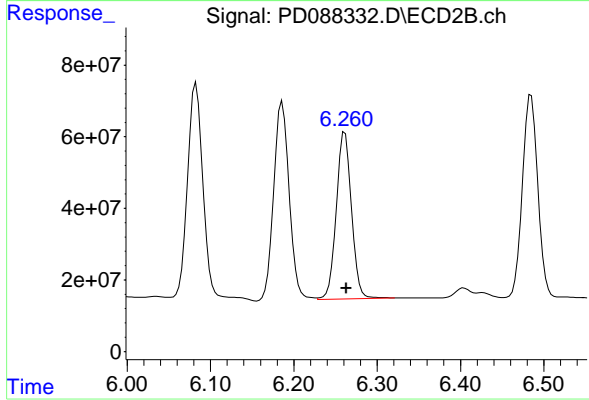
#17 4,4'-DDT

R.T.: 6.186 min  
 Delta R.T.: -0.002 min  
 Response: 717135144  
 Conc: 42.14 ng/ml



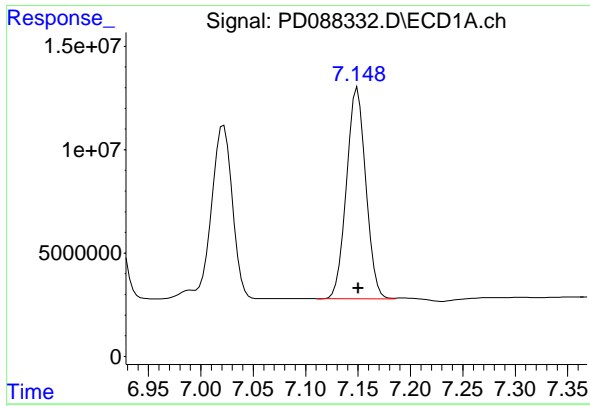
#18 Endrin aldehyde

R.T.: 6.915 min  
 Delta R.T.: 0.000 min  
 Response: 109259155  
 Conc: 47.34 ng/ml



#18 Endrin aldehyde

R.T.: 6.261 min  
 Delta R.T.: -0.002 min  
 Response: 589206425  
 Conc: 44.30 ng/ml



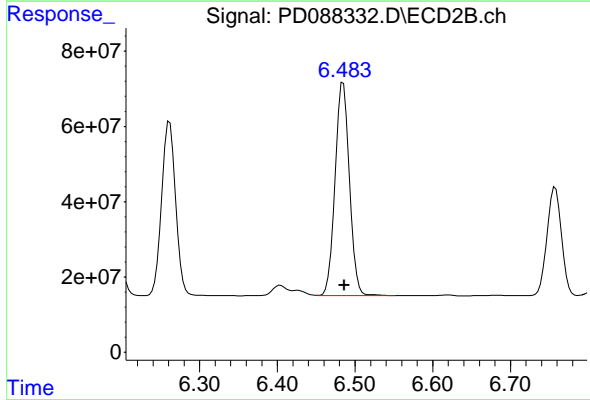
#19 Endosulfan Sulfate

R.T.: 7.150 min  
 Delta R.T.: 0.000 min  
 Response: 131995482  
 Conc: 45.90 ng/ml

Instrument : ECD\_D  
 ClientSampleId : COMP-4MSD

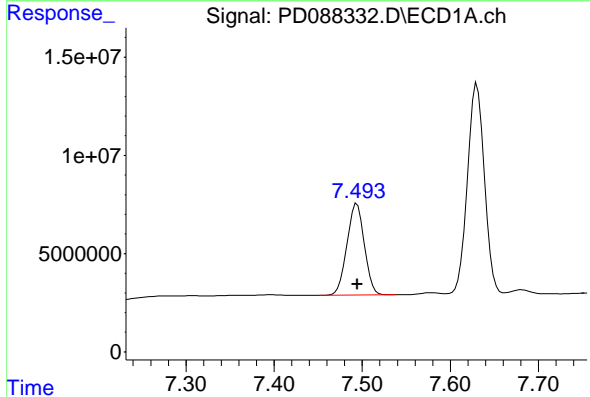
Manual Integrations  
 APPROVED

Reviewed By :Abdul Mirza 04/30/2025  
 Supervised By :mohammad ahmed 05/02/2025



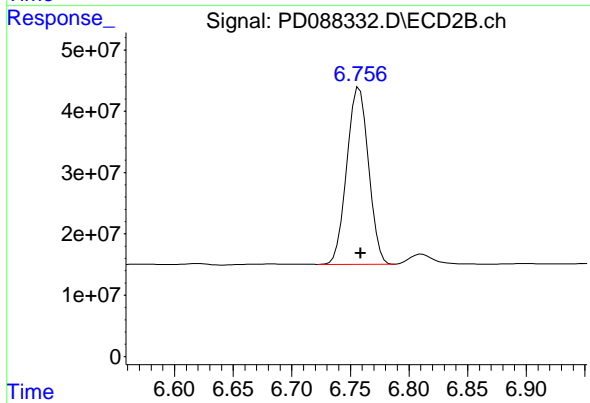
#19 Endosulfan Sulfate

R.T.: 6.485 min  
 Delta R.T.: -0.001 min  
 Response: 731697401  
 Conc: 42.71 ng/ml



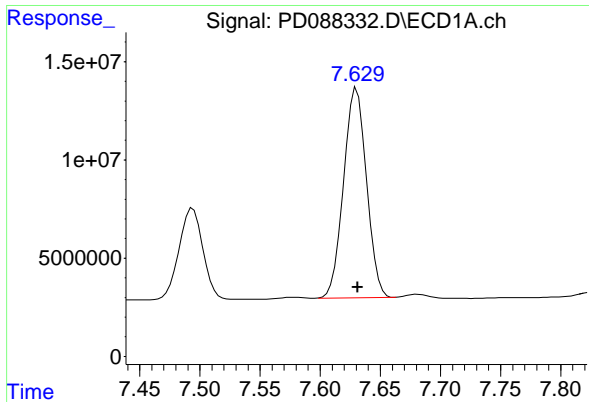
#20 Methoxychlor

R.T.: 7.494 min  
 Delta R.T.: 0.000 min  
 Response: 63975403  
 Conc: 42.66 ng/ml



#20 Methoxychlor

R.T.: 6.758 min  
 Delta R.T.: -0.001 min  
 Response: 372347025  
 Conc: 40.82 ng/ml



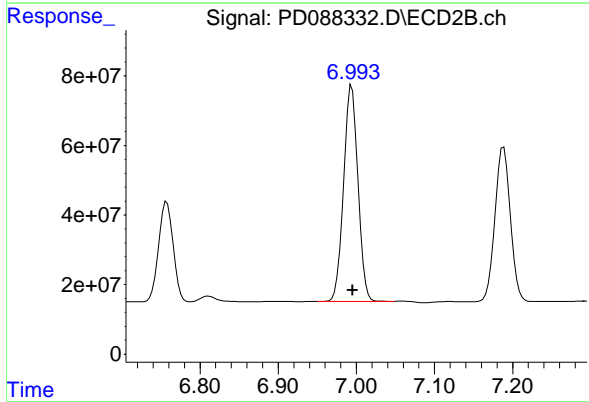
#21 Endrin ketone

R.T.: 7.630 min  
 Delta R.T.: -0.001 min  
 Response: 141907968  
 Conc: 45.98 ng/ml

Instrument :  
 ECD\_D  
 ClientSampleId :  
 COMP-4MSD

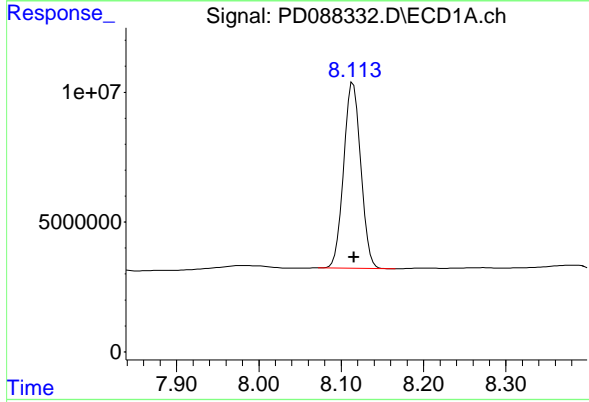
Manual Integrations  
 APPROVED

Reviewed By :Abdul Mirza 04/30/2025  
 Supervised By :mohammad ahmed 05/02/2025



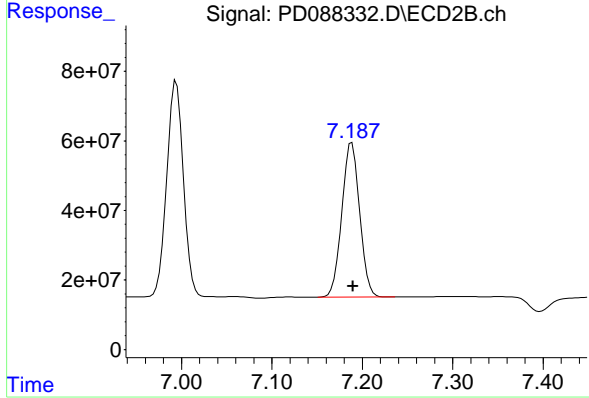
#21 Endrin ketone

R.T.: 6.994 min  
 Delta R.T.: 0.000 min  
 Response: 792667876  
 Conc: 42.38 ng/ml



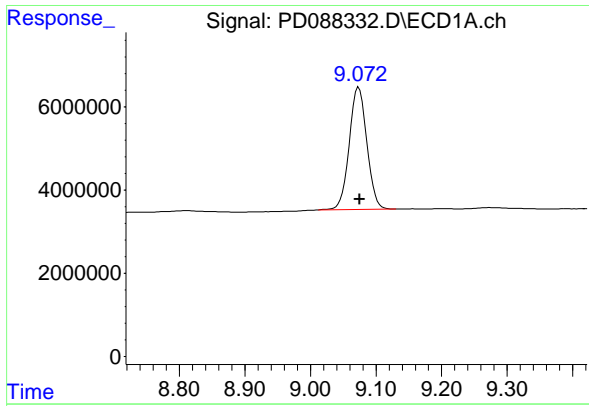
#22 Mirex

R.T.: 8.114 min  
 Delta R.T.: 0.000 min  
 Response: 103067445  
 Conc: 43.89 ng/ml



#22 Mirex

R.T.: 7.188 min  
 Delta R.T.: -0.001 min  
 Response: 608568702  
 Conc: 41.06 ng/ml



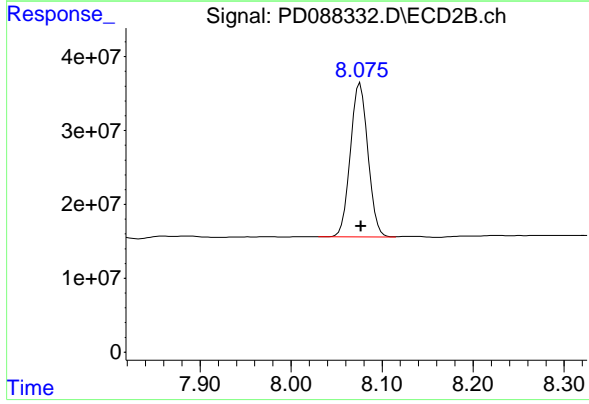
#28 Decachlorobiphenyl

R.T.: 9.074 min  
 Delta R.T.: -0.001 min  
 Response: 54788152  
 Conc: 16.56 ng/ml

Instrument :  
 ECD\_D  
 ClientSampleId :  
 COMP-4MSD

Manual Integrations  
 APPROVED

Reviewed By :Abdul Mirza 04/30/2025  
 Supervised By :mohammad ahmed 05/02/2025



#28 Decachlorobiphenyl

R.T.: 8.076 min  
 Delta R.T.: 0.000 min  
 Response: 280988202  
 Conc: 15.21 ng/ml