

Data Path : Z:\pestpcbsrv\HPCHEM1\ECD_D\Data\PD043021\
 Data File : PD062633.D
 Signal(s) : Signal #1: ECD1A.ch Signal #2: ECD2B.ch
 Acq On : 30 Apr 2021 15:43
 Operator : AR\AJ
 Sample : INDB333
 Misc :
 ALS Vial : 26 Sample Multiplier: 1

Instrument :
 ECD_D
 ClientSampled :

Integration File signal 1: autoint1.e
 Integration File signal 2: autoint2.e
 Quant Time: Apr 30 23:19:18 2021
 Quant Method : Z:\pestpcbsrv\HPCHEM1\ECD_D\Method\PD042921CLP.M
 Quant Title : GC Extractables
 QLast Update : Fri Apr 30 02:49:51 2021
 Response via : Initial Calibration
 Integrator: ChemStation

Volume Inj. : 1 µl
 Signal #1 Phase : ZB-MR2 Signal #2 Phase: ZB-MR1
 Signal #1 Info : 30M x 0.32mm x0.2 Signal #2 Info : 30M x 0.32mm x 0.50µm

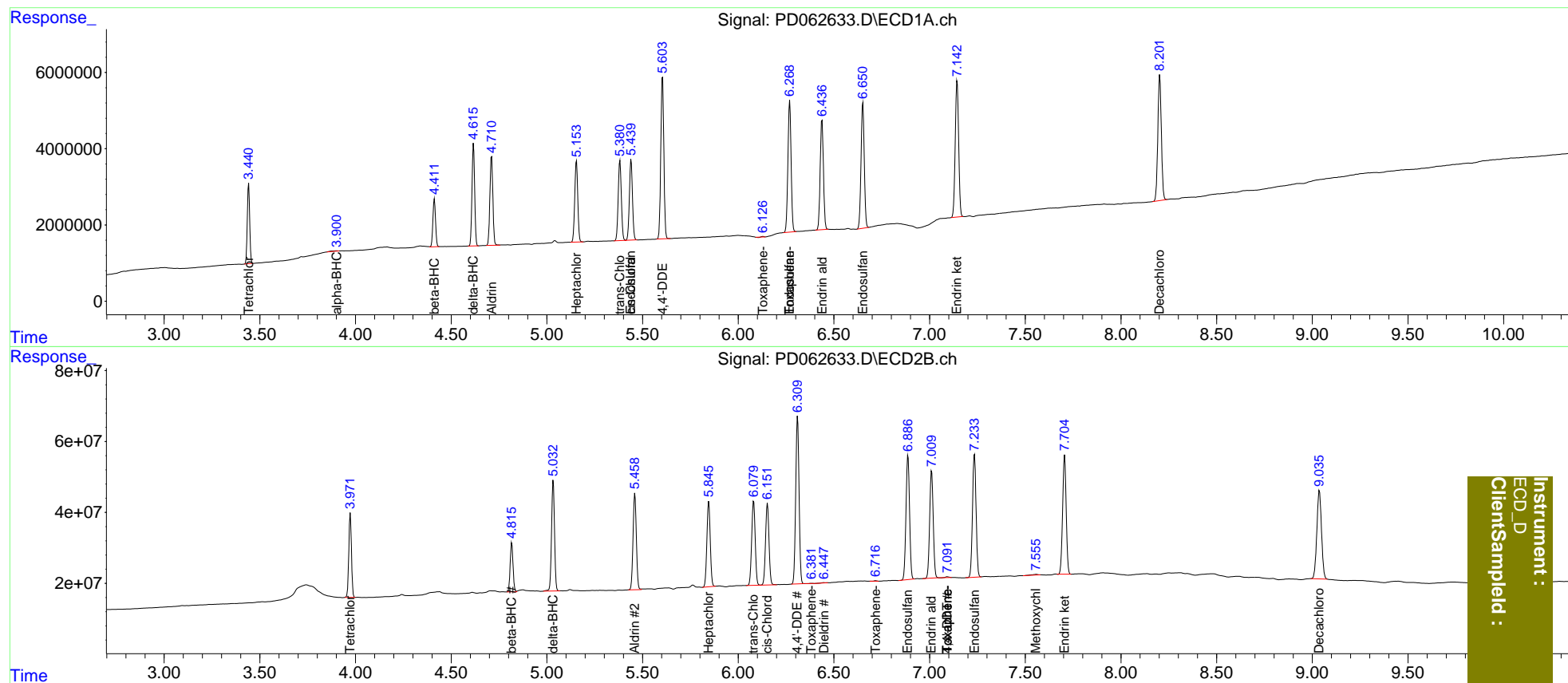
Compound	RT#1	RT#2	Resp#1	Resp#2	ng/ml	ng/ml
System Monitoring Compounds						
1) SA Tetrachlo...	3.442	3.973	18366167	230.4E6	19.183	18.977
27) SA Decachlor...	8.203	9.037	42102861	421.1E6	39.224	38.576
Target Compounds						
2) A alpha-BHC	3.902	0.000	322864	0	0.231	N.D. #
5) MB Aldrin	4.711	5.460	25241266	324.7E6	19.378	18.770
6) B beta-BHC	4.412	4.817	12113501	143.7E6	19.511	18.825
7) B delta-BHC	4.616	5.033	25926101	337.1E6	19.053	18.170
8) B Heptachlo...	5.155	5.846	23487742	292.9E6	19.166	18.261
9) A Endosulfan I	5.440f	6.211	23518451	221040	21.033	<MDL #
10) B trans-Chl...	5.382	6.081	23907189	303.2E6	19.070	18.514
11) B cis-Chlor...	5.440	6.153	23518451	287.4E6	19.153	18.514
12) B 4,4'-DDE	5.604	6.310	46911280	572.4E6	37.906	36.530
13) MA Dieldrin	0.000	6.449	0	1583786	N.D.	0.102
14) MA Endrin	5.941f	6.718f	74645	940485	<MDL	<MDL #
15) B Endosulfa...	6.269	6.887	39745891	452.1E6	38.324	36.123
16) A 4,4'-DDD	6.128	6.789	38791	31732	<MDL	<MDL #
17) MA 4,4'-DDT	0.000	7.092	0	2206128	N.D.	0.186
18) B Endrin al...	6.438	7.010	33966528	391.1E6	38.068	35.844
19) B Endosulfa...	6.652	7.235	38572063	455.1E6	38.587	35.660
20) A Methoxychlor	0.000	7.557	0	5049433	N.D.	0.891
21) B Endrin ke...	7.144	7.706	44482045	432.0E6	37.957	35.106
22) Toxaphene-1	0.000	6.384	0	213917	N.D.	3.220
23) Toxaphene-2	0.000	6.718	0	940485	N.D.	11.293
24) Toxaphene-3	6.128	7.092	38791	2206128	4.721	20.011 #
25) Toxaphene-4	6.269	7.092	39745891	2206128	2063.747	6.929 #

(f)=RT Delta > 1/2 Window (#)=Amounts differ by > 25% (m)=manual int.

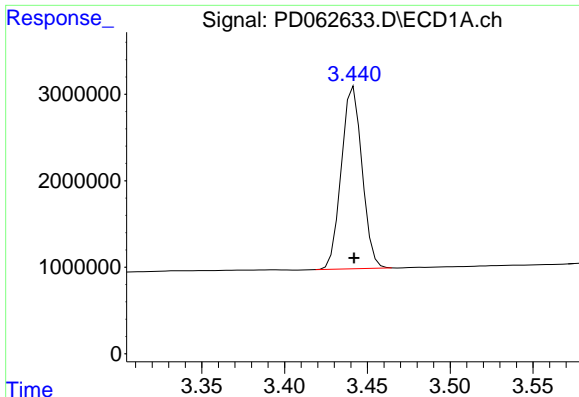
Data Path : Z:\pestpcbsrv\HPCHEM1\ECD_D\Data\PD043021\
 Data File : PD062633.D
 Signal(s) : Signal #1: ECD1A.ch Signal #2: ECD2B.ch
 Acq On : 30 Apr 2021 15:43
 Operator : AR\AJ
 Sample : INDB333
 Misc :
 ALS Vial : 26 Sample Multiplier: 1

Integration File signal 1: autoint1.e
 Integration File signal 2: autoint2.e
 Quant Time: Apr 30 23:19:18 2021
 Quant Method : Z:\pestpcbsrv\HPCHEM1\ECD_D\Method\PD042921CLP.M
 Quant Title : GC Extractables
 QLast Update : Fri Apr 30 02:49:51 2021
 Response via : Initial Calibration
 Integrator: ChemStation

Volume Inj. : 1 µl
 Signal #1 Phase : ZB-MR2 Signal #2 Phase: ZB-MR1
 Signal #1 Info : 30M x 0.32mm x0.2 Signal #2 Info : 30M x 0.32mm x 0.50µm

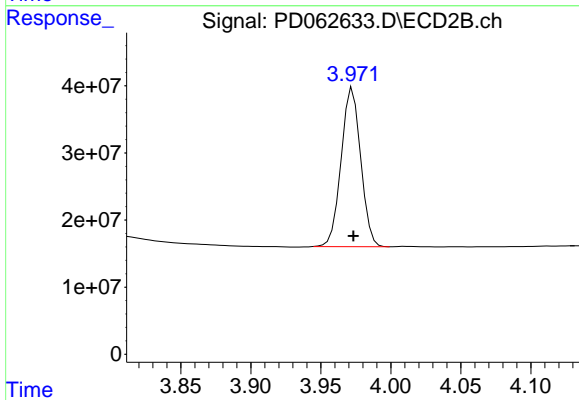


Instrument :
 ECD_D
 ClientSampleId :

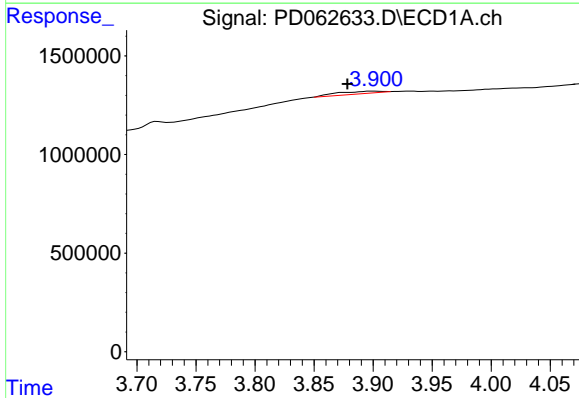


#1 Tetrachloro-m-xylene
 R.T.: 3.442 min
 Delta R.T.: 0.000 min
 Response: 18366167
 Conc: 19.18 ng/ml

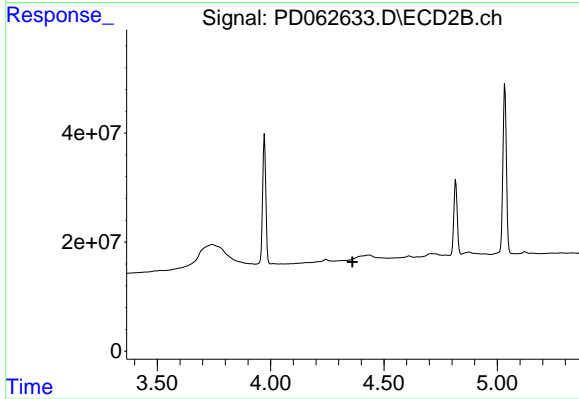
Instrument :
 ECD_D
 ClientSampleId :



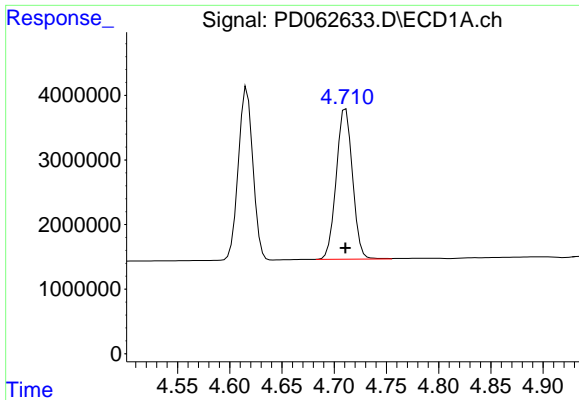
#1 Tetrachloro-m-xylene
 R.T.: 3.973 min
 Delta R.T.: 0.000 min
 Response: 230438901
 Conc: 18.98 ng/ml



#2 alpha-BHC
 R.T.: 3.902 min
 Delta R.T.: 0.023 min
 Response: 322864
 Conc: 0.23 ng/ml

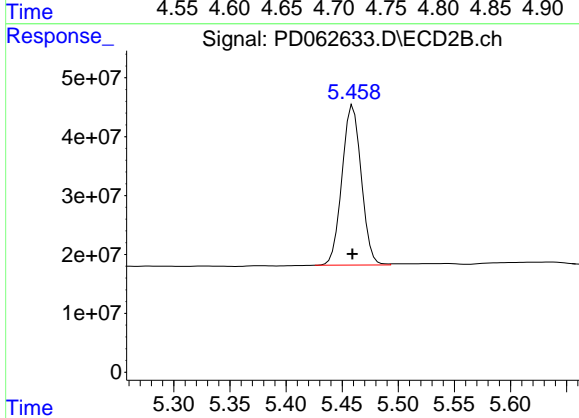


#2 alpha-BHC
 R.T.: 0.000 min
 Exp R.T. : 4.362 min
 Response: 0
 Conc: N.D.

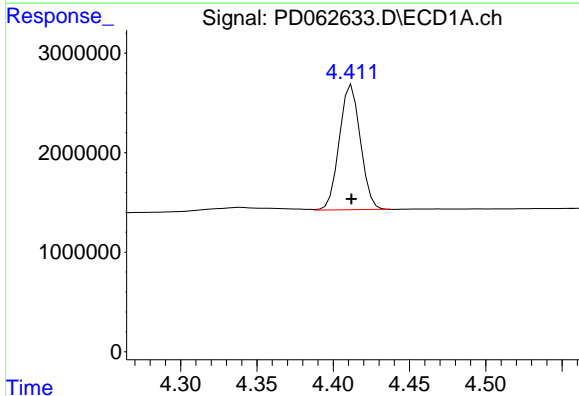


#5 Aldrin
 R.T.: 4.711 min
 Delta R.T.: 0.000 min
 Response: 25241266
 Conc: 19.38 ng/ml

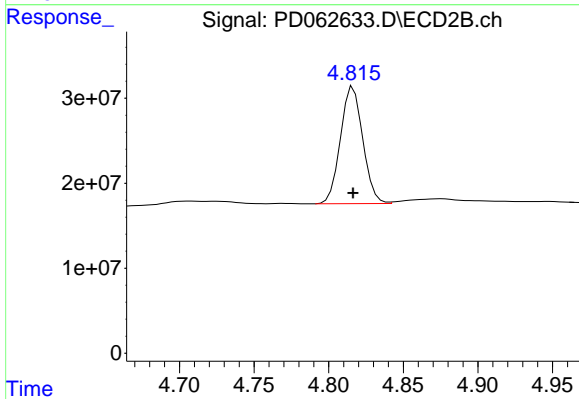
Instrument :
 ECD_D
 ClientSampleId :



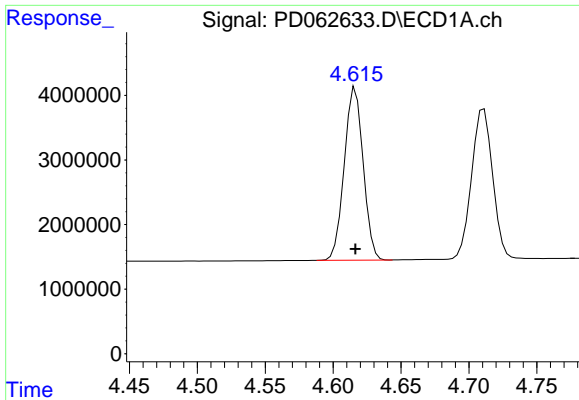
#5 Aldrin
 R.T.: 5.460 min
 Delta R.T.: 0.000 min
 Response: 324670851
 Conc: 18.77 ng/ml



#6 beta-BHC
 R.T.: 4.412 min
 Delta R.T.: 0.000 min
 Response: 12113501
 Conc: 19.51 ng/ml



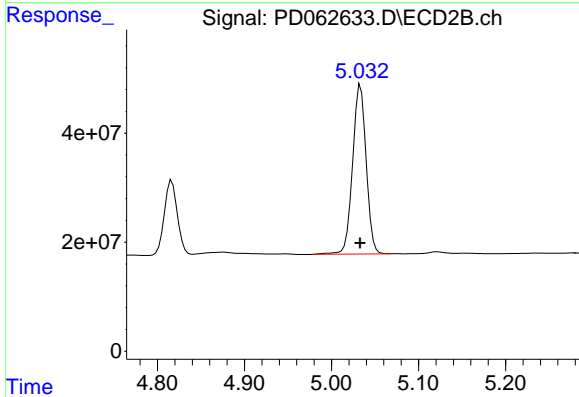
#6 beta-BHC
 R.T.: 4.817 min
 Delta R.T.: 0.000 min
 Response: 143702430
 Conc: 18.82 ng/ml



#7 delta-BHC

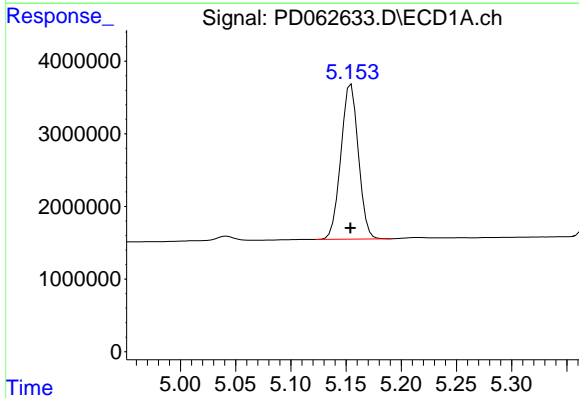
R.T.: 4.616 min
 Delta R.T.: 0.000 min
 Response: 25926101
 Conc: 19.05 ng/ml

Instrument :
 ECD_D
 ClientSampled :



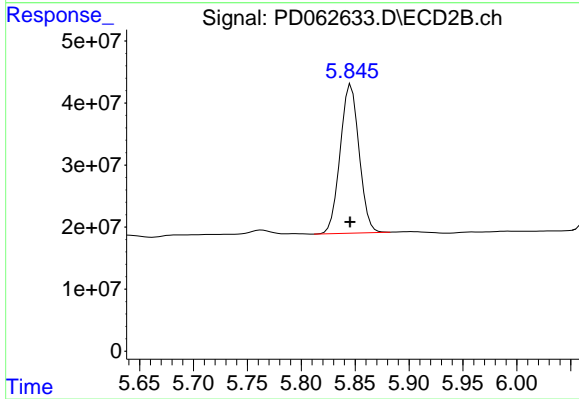
#7 delta-BHC

R.T.: 5.033 min
 Delta R.T.: 0.000 min
 Response: 337109663
 Conc: 18.17 ng/ml



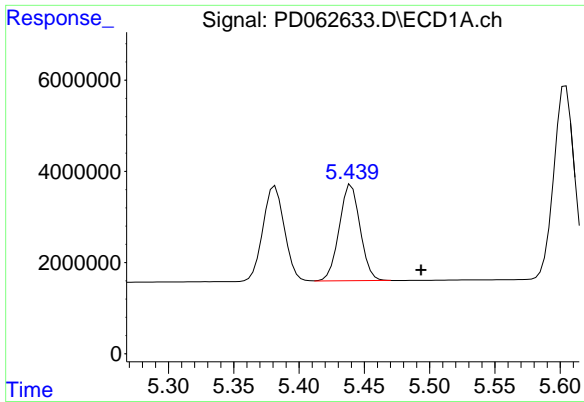
#8 Heptachlor epoxide

R.T.: 5.155 min
 Delta R.T.: 0.000 min
 Response: 23487742
 Conc: 19.17 ng/ml



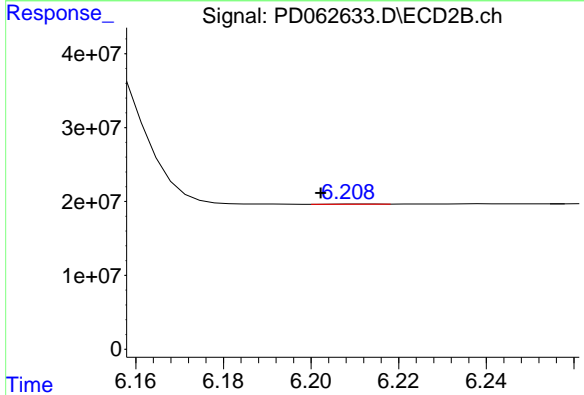
#8 Heptachlor epoxide

R.T.: 5.846 min
 Delta R.T.: 0.000 min
 Response: 292884022
 Conc: 18.26 ng/ml

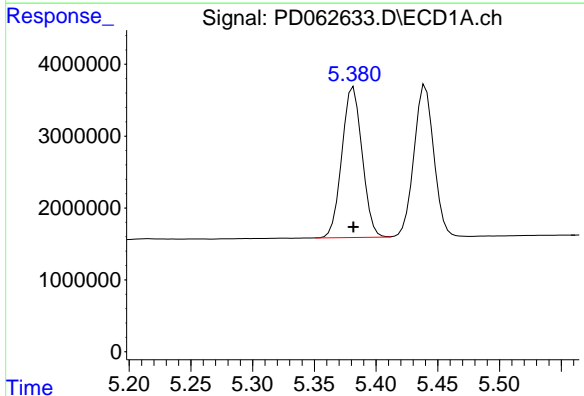


#9 Endosulfan I
 R.T.: 5.440 min
 Delta R.T.: -0.053 min
 Response: 23518451
 Conc: 21.03 ng/ml

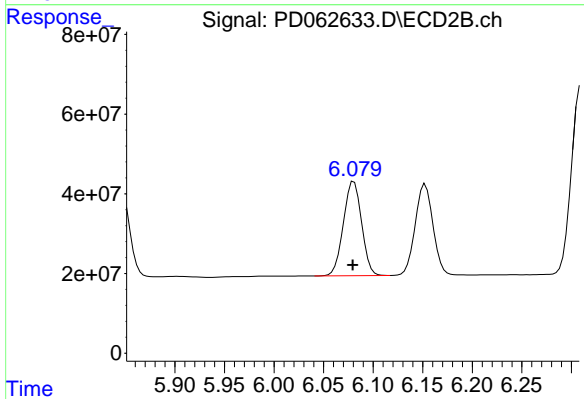
Instrument :
 ECD_D
 ClientSampled :



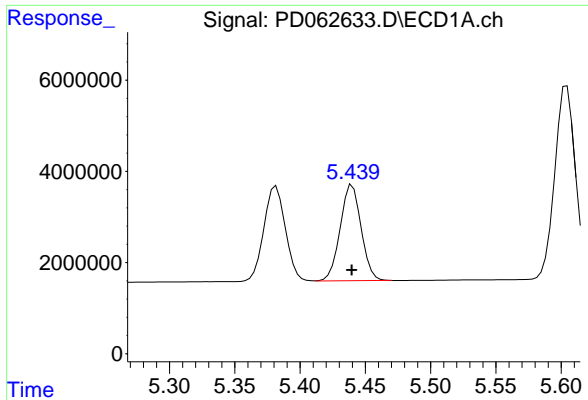
#9 Endosulfan I
 R.T.: 6.211 min
 Delta R.T.: 0.009 min
 Response: 221040
 Conc: N.D.



#10 trans-Chlordane
 R.T.: 5.382 min
 Delta R.T.: 0.000 min
 Response: 23907189
 Conc: 19.07 ng/ml



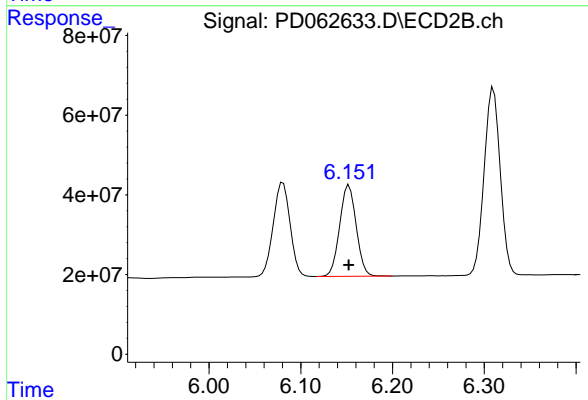
#10 trans-Chlordane
 R.T.: 6.081 min
 Delta R.T.: 0.001 min
 Response: 303206430
 Conc: 18.51 ng/ml



#11 cis-Chlordane

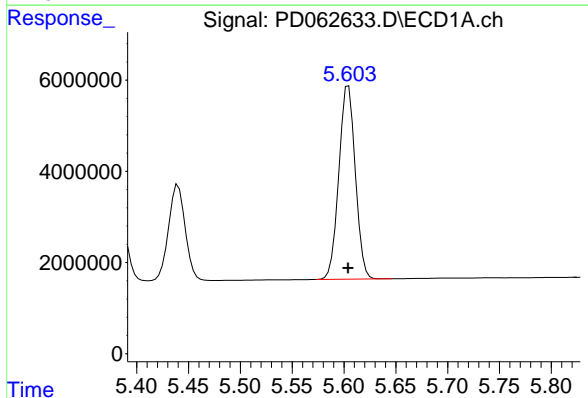
R.T.: 5.440 min
 Delta R.T.: 0.000 min
 Response: 23518451
 Conc: 19.15 ng/ml

Instrument :
 ECD_D
 ClientSampleId :



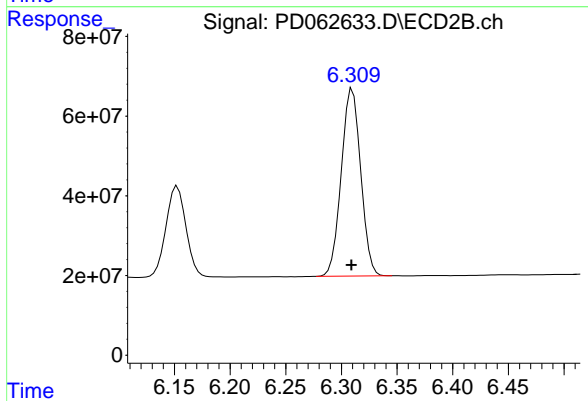
#11 cis-Chlordane

R.T.: 6.153 min
 Delta R.T.: 0.000 min
 Response: 287386086
 Conc: 18.51 ng/ml



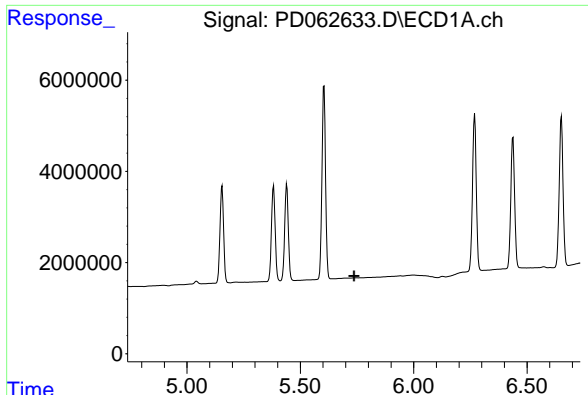
#12 4,4'-DDE

R.T.: 5.604 min
 Delta R.T.: 0.000 min
 Response: 46911280
 Conc: 37.91 ng/ml



#12 4,4'-DDE

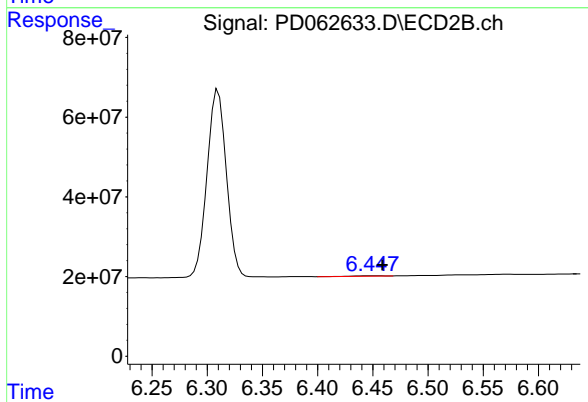
R.T.: 6.310 min
 Delta R.T.: 0.000 min
 Response: 572409356
 Conc: 36.53 ng/ml



#13 Dieldrin

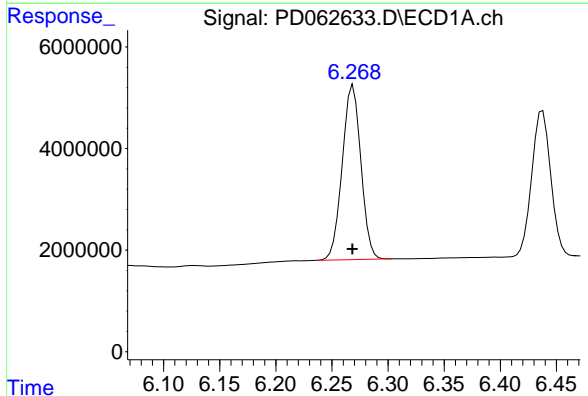
R.T.: 0.000 min
 Exp R.T.: 5.737 min
 Response: 0
 Conc: N.D.

Instrument :
 ECD_D
 ClientSampled :



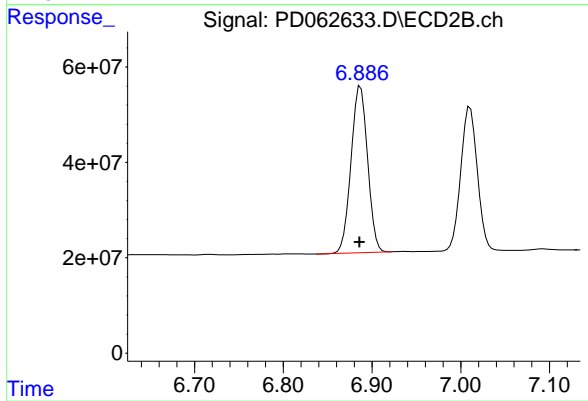
#13 Dieldrin

R.T.: 6.449 min
 Delta R.T.: -0.010 min
 Response: 1583786
 Conc: 0.10 ng/ml



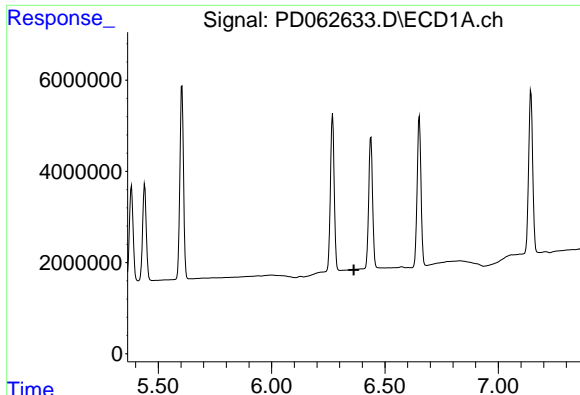
#15 Endosulfan II

R.T.: 6.269 min
 Delta R.T.: 0.000 min
 Response: 39745891
 Conc: 38.32 ng/ml



#15 Endosulfan II

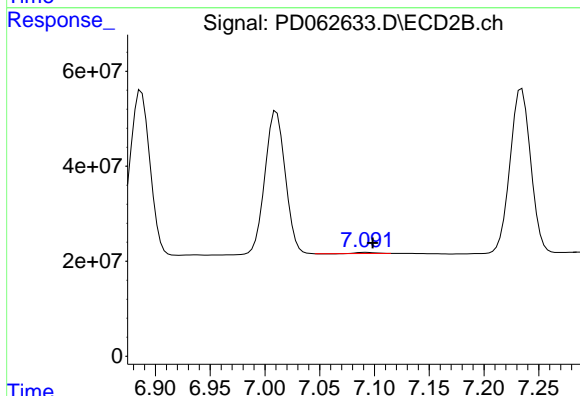
R.T.: 6.887 min
 Delta R.T.: 0.001 min
 Response: 452070502
 Conc: 36.12 ng/ml



#17 4,4'-DDT

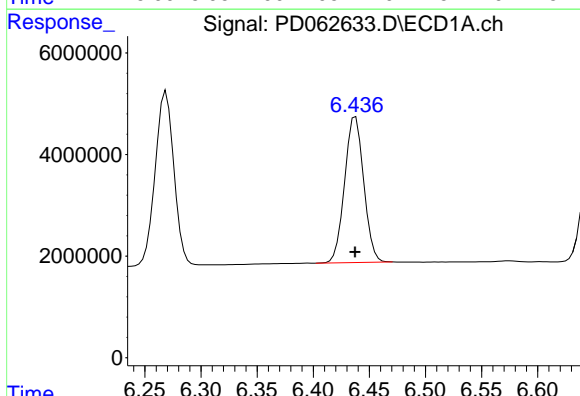
R.T.: 0.000 min
 Exp R.T.: 6.363 min
 Response: 0
 Conc: N.D.

Instrument :
 ECD_D
 ClientSampleId :



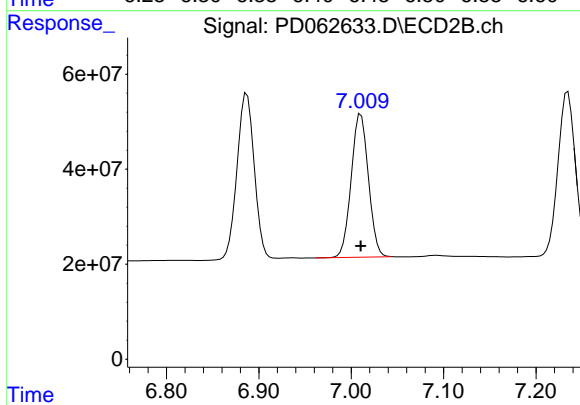
#17 4,4'-DDT

R.T.: 7.092 min
 Delta R.T.: -0.006 min
 Response: 2206128
 Conc: 0.19 ng/ml



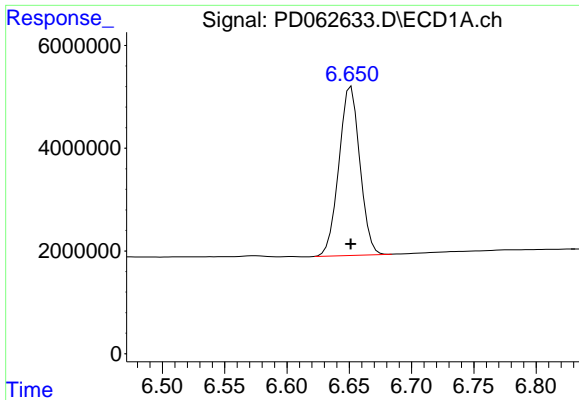
#18 Endrin aldehyde

R.T.: 6.438 min
 Delta R.T.: 0.000 min
 Response: 33966528
 Conc: 38.07 ng/ml



#18 Endrin aldehyde

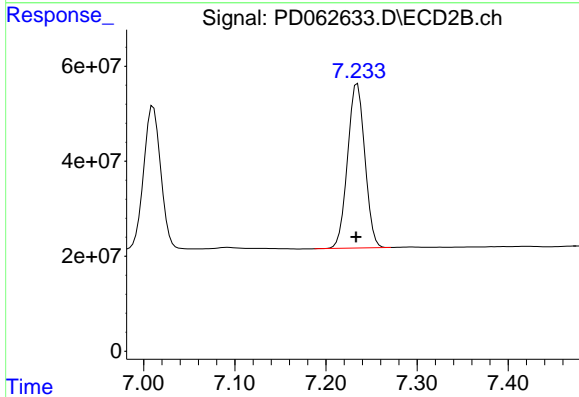
R.T.: 7.010 min
 Delta R.T.: 0.000 min
 Response: 391062060
 Conc: 35.84 ng/ml



#19 Endosulfan Sulfate

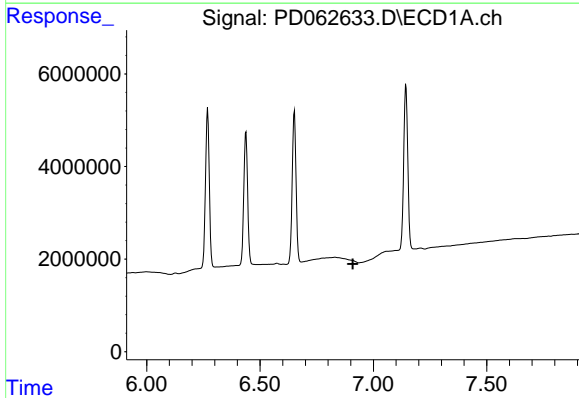
R.T.: 6.652 min
 Delta R.T.: 0.000 min
 Response: 38572063
 Conc: 38.59 ng/ml

Instrument :
 ECD_D
 ClientSampleId :



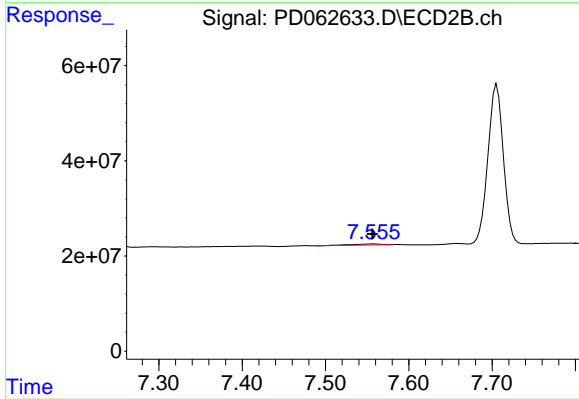
#19 Endosulfan Sulfate

R.T.: 7.235 min
 Delta R.T.: 0.002 min
 Response: 455076409
 Conc: 35.66 ng/ml



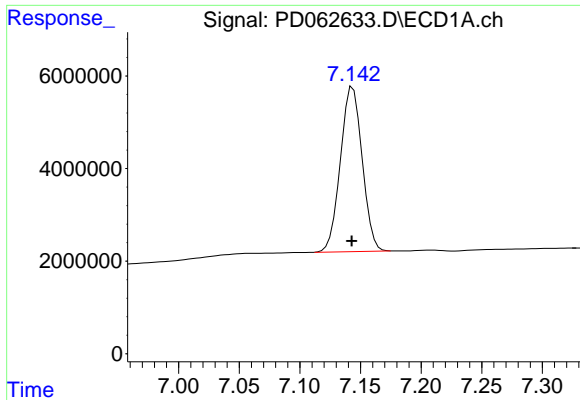
#20 Methoxychlor

R.T.: 0.000 min
 Exp R.T. : 6.909 min
 Response: 0
 Conc: N.D.



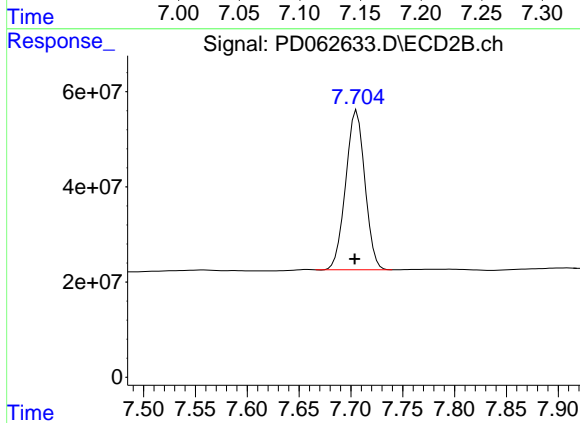
#20 Methoxychlor

R.T.: 7.557 min
 Delta R.T.: 0.000 min
 Response: 5049433
 Conc: 0.89 ng/ml

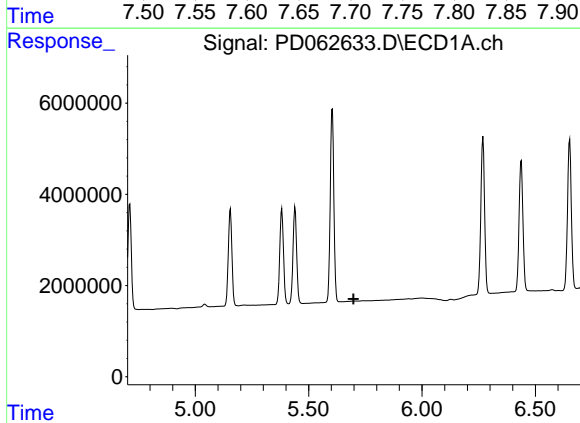


#21 Endrin ketone
 R.T.: 7.144 min
 Delta R.T.: 0.000 min
 Response: 44482045
 Conc: 37.96 ng/ml

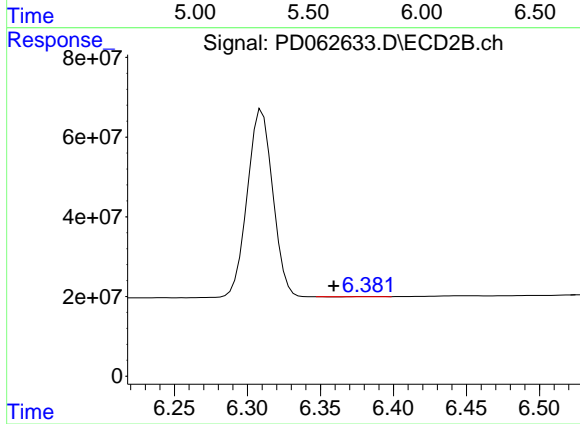
Instrument :
 ECD_D
 ClientSampleId :



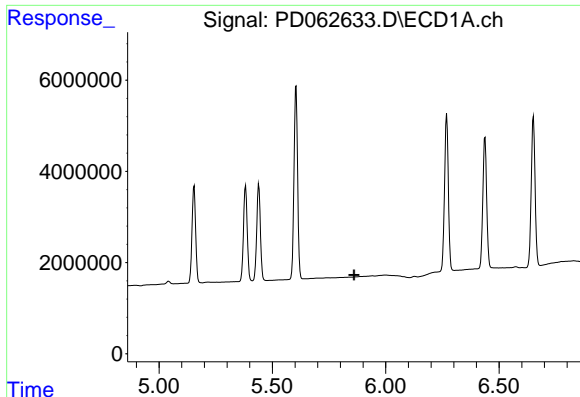
#21 Endrin ketone
 R.T.: 7.706 min
 Delta R.T.: 0.002 min
 Response: 432032507
 Conc: 35.11 ng/ml



#22 Toxaphene-1
 R.T.: 0.000 min
 Exp R.T. : 5.698 min
 Response: 0
 Conc: N.D.



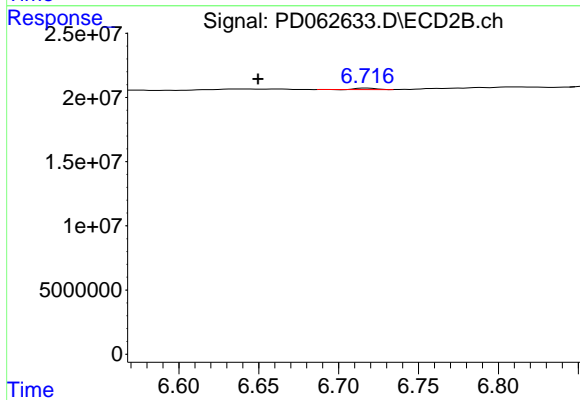
#22 Toxaphene-1
 R.T.: 6.384 min
 Delta R.T.: 0.025 min
 Response: 213917
 Conc: 3.22 ng/ml



#23 Toxaphene-2

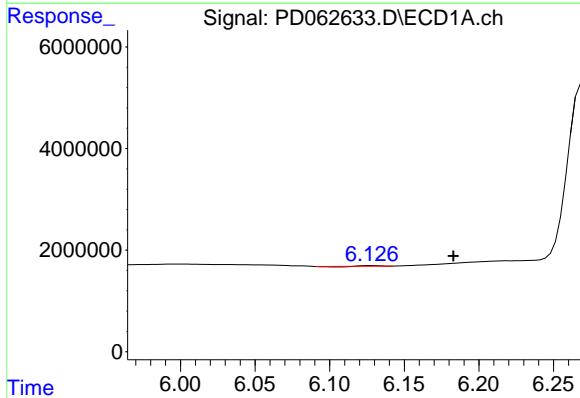
R.T.: 0.000 min
 Exp R.T.: 5.860 min
 Response: 0
 Conc: N.D.

Instrument :
 ECD_D
 ClientSampled :



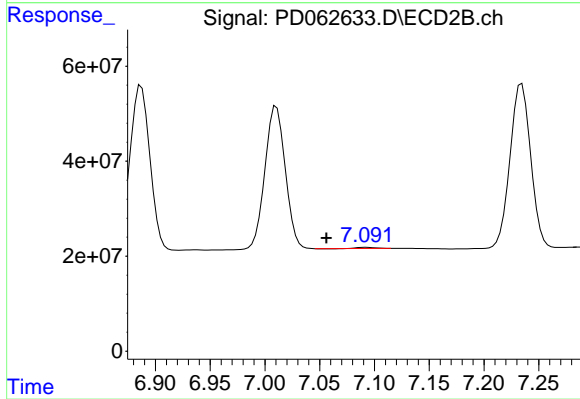
#23 Toxaphene-2

R.T.: 6.718 min
 Delta R.T.: 0.068 min
 Response: 940485
 Conc: 11.29 ng/ml



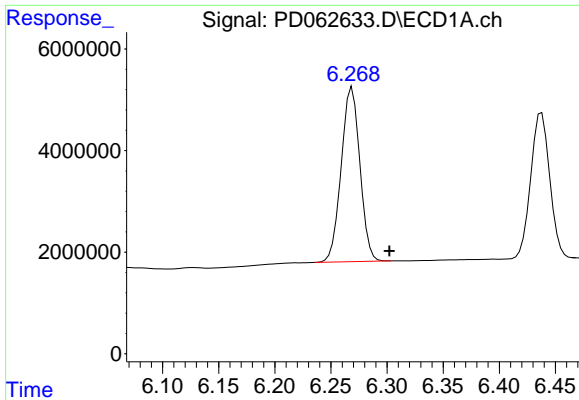
#24 Toxaphene-3

R.T.: 6.128 min
 Delta R.T.: -0.055 min
 Response: 38791
 Conc: 4.72 ng/ml



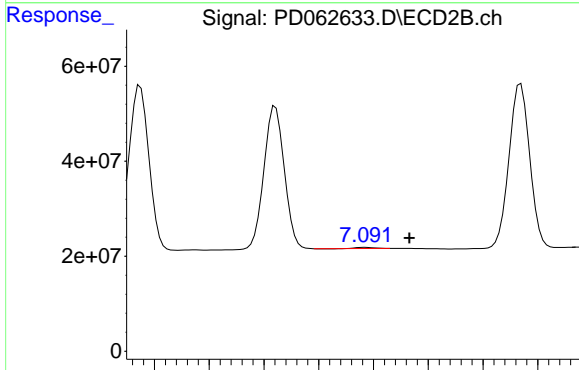
#24 Toxaphene-3

R.T.: 7.092 min
 Delta R.T.: 0.036 min
 Response: 2206128
 Conc: 20.01 ng/ml

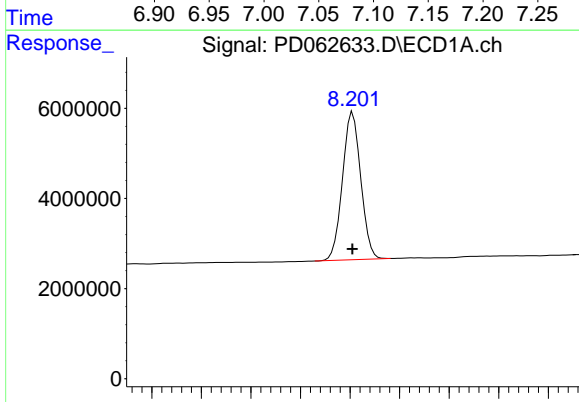


#25 Toxaphene-4
R.T.: 6.269 min
Delta R.T.: -0.033 min
Response: 39745891
Conc: 2063.75 ng/ml

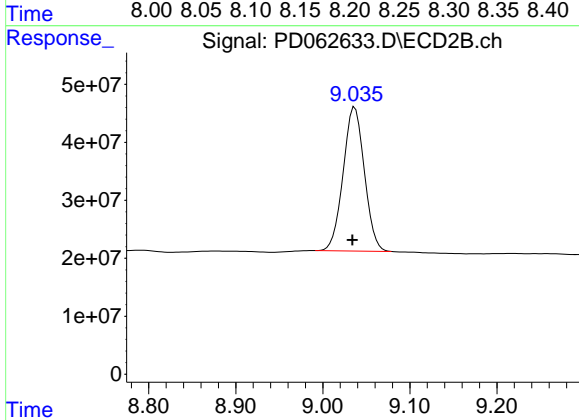
Instrument :
ECD_D
ClientSampleId :



#25 Toxaphene-4
R.T.: 7.092 min
Delta R.T.: -0.041 min
Response: 2206128
Conc: 6.93 ng/ml



#27 Decachlorobiphenyl
R.T.: 8.203 min
Delta R.T.: 0.000 min
Response: 42102861
Conc: 39.22 ng/ml



#27 Decachlorobiphenyl
R.T.: 9.037 min
Delta R.T.: 0.003 min
Response: 421062420
Conc: 38.58 ng/ml