

Data Path : Z:\pestpcbsrv\HPCHEM1\ECD_D\Data\PD043021\
 Data File : PD062663.D
 Signal(s) : Signal #1: ECD1A.ch Signal #2: ECD2B.ch
 Acq On : 30 Apr 2021 22:41
 Operator : AR\AJ
 Sample : PB136092BL
 Misc :
 ALS Vial : 54 Sample Multiplier: 1

Instrument :
 ECD_D
 ClientSampleId :

Integration File signal 1: autoint1.e
 Integration File signal 2: autoint2.e
 Quant Time: Apr 30 23:28:19 2021
 Quant Method : Z:\pestpcbsrv\HPCHEM1\ECD_D\Method\PD042921CLP.M
 Quant Title : GC Extractables
 QLast Update : Fri Apr 30 02:49:51 2021
 Response via : Initial Calibration
 Integrator: ChemStation

Volume Inj. : 1 µl
 Signal #1 Phase : ZB-MR2 Signal #2 Phase: ZB-MR1
 Signal #1 Info : 30M x 0.32mm x0.2 Signal #2 Info : 30M x 0.32mm x 0.50µm

Compound	RT#1	RT#2	Resp#1	Resp#2	ng/ml	ng/ml

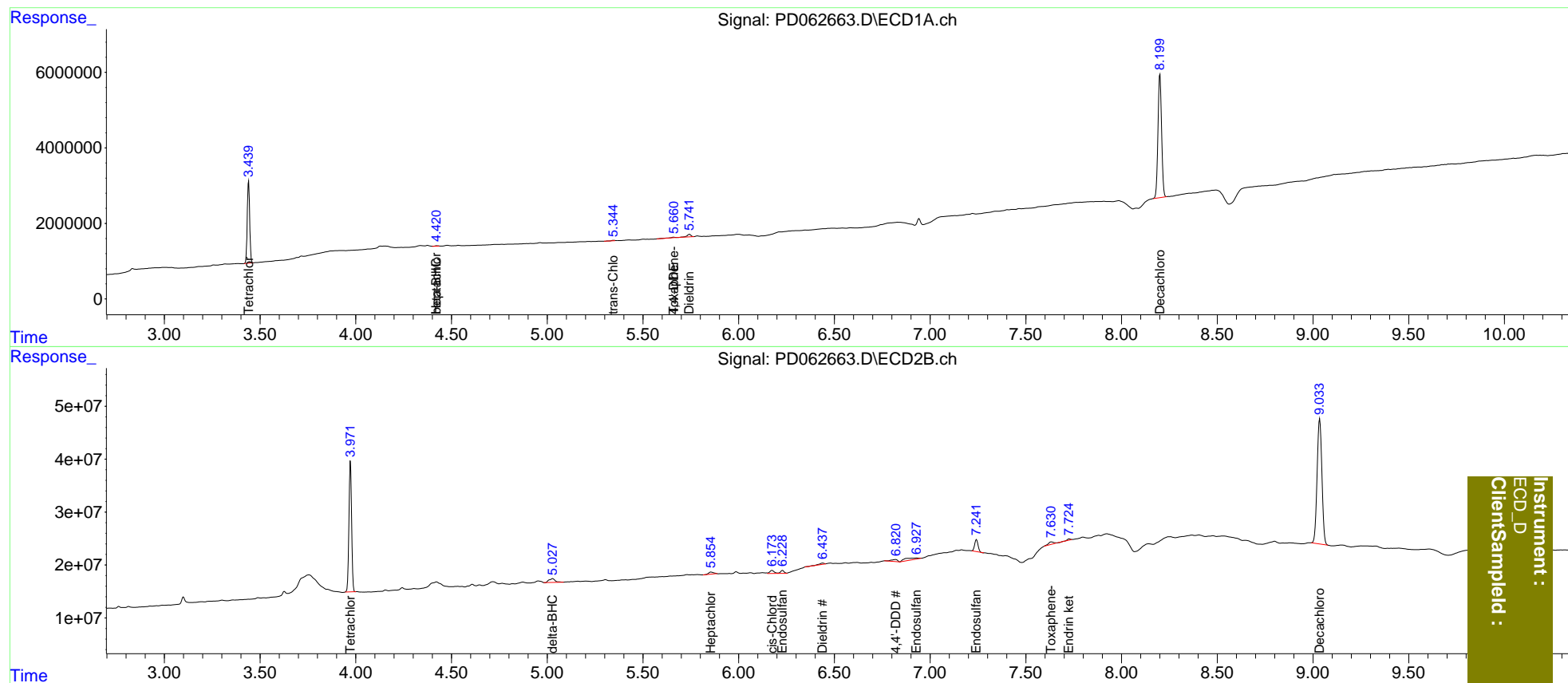
System Monitoring Compounds						
1) SA Tetrachlo...	3.441	3.973	19298810	239.5E6	20.158	19.721
2) SA Decachlor...	8.201	9.035	42870890	413.0E6	39.940	37.838
Target Compounds						
3) MA gamma-BHC...	0.000	4.647	0	380484	N.D.	<MDL
4) MA Heptachlor	4.423f	5.160	147929	1222015	0.115	<MDL #
5) MB Aldrin	0.000	5.448	0	691583	N.D.	<MDL
6) B beta-BHC	4.423	4.820	147929	55191	0.238	<MDL #
7) B delta-BHC	0.000	5.029	0	15725428	N.D.	0.848
8) B Heptachlo...	5.109f	5.855	107474	7805508	<MDL	0.487 #
9) A Endosulfan I	0.000	6.229	0	7745389	N.D.	0.528
10) B trans-Chl...	5.346f	6.063	203351	1443635	0.162	<MDL #
11) B cis-Chlor...	0.000	6.175	0	9682070	N.D.	0.624
12) B 4,4'-DDE	5.661f	0.000	314166	0	0.254	N.D. #
13) MA Dieldrin	5.743	6.439	945394	4404954	0.750	0.284 #
15) B Endosulfa...	6.214f	6.930f	-42025	17172584	N.D.	1.372
16) A 4,4'-DDD	0.000	6.820	0	9087661	N.D.	0.731
19) B Endosulfa...	0.000	7.242	0	28198573	N.D.	2.210
21) B Endrin ke...	0.000	7.727	0	3270007	N.D.	0.266
22) Toxaphene-1	5.661	0.000	314166	0	42.145	N.D. #
26) Toxaphene-5	0.000	7.633	0	9906185	N.D.	73.433

(f)=RT Delta > 1/2 Window (#)=Amounts differ by > 25% (m)=manual int.

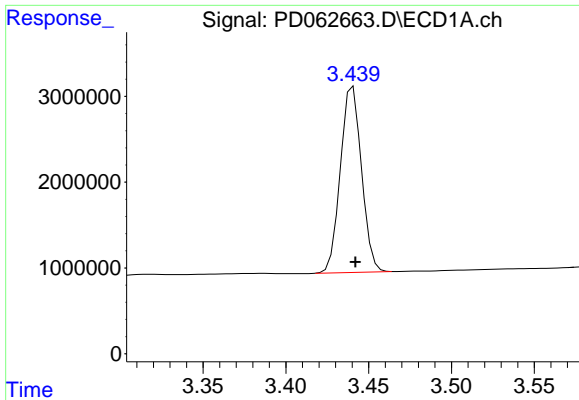
Data Path : Z:\pestpcbsrv\HPCHEM1\ECD_D\Data\PD043021\
 Data File : PD062663.D
 Signal(s) : Signal #1: ECD1A.ch Signal #2: ECD2B.ch
 Acq On : 30 Apr 2021 22:41
 Operator : AR\AJ
 Sample : PB136092BL
 Misc :
 ALS Vial : 54 Sample Multiplier: 1

Integration File signal 1: autoint1.e
 Integration File signal 2: autoint2.e
 Quant Time: Apr 30 23:28:19 2021
 Quant Method : Z:\pestpcbsrv\HPCHEM1\ECD_D\Method\PD042921CLP.M
 Quant Title : GC Extractables
 QLast Update : Fri Apr 30 02:49:51 2021
 Response via : Initial Calibration
 Integrator: ChemStation

Volume Inj. : 1 µl
 Signal #1 Phase : ZB-MR2 Signal #2 Phase: ZB-MR1
 Signal #1 Info : 30M x 0.32mm x 0.2 Signal #2 Info : 30M x 0.32mm x 0.50µm

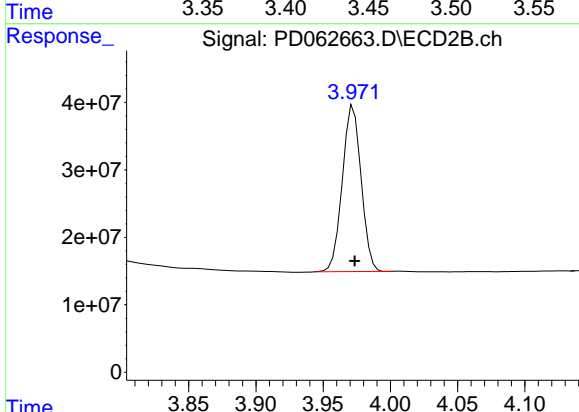


Instrument :
 ECD_D
 ClientSampleId :

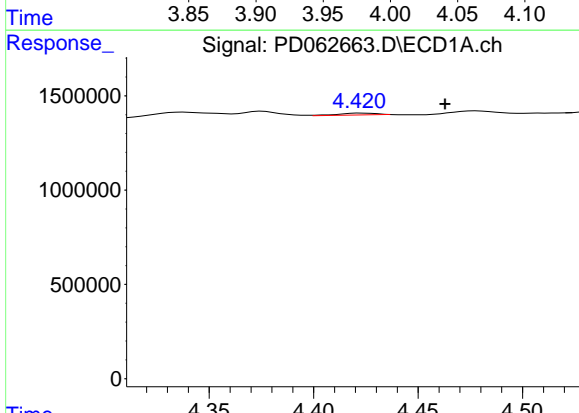


#1 Tetrachloro-m-xylene
 R.T.: 3.441 min
 Delta R.T.: -0.001 min
 Response: 19298810
 Conc: 20.16 ng/ml

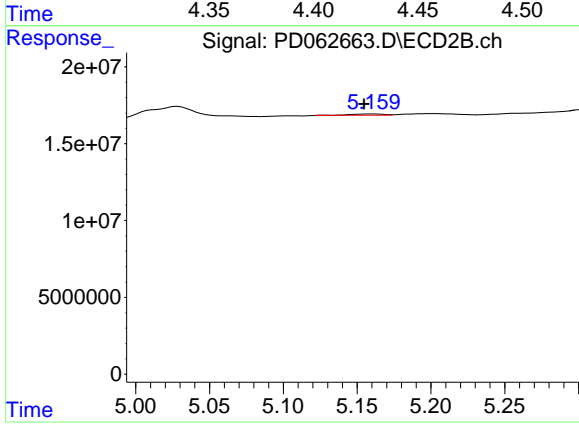
Instrument :
 ECD_D
 ClientSampled :



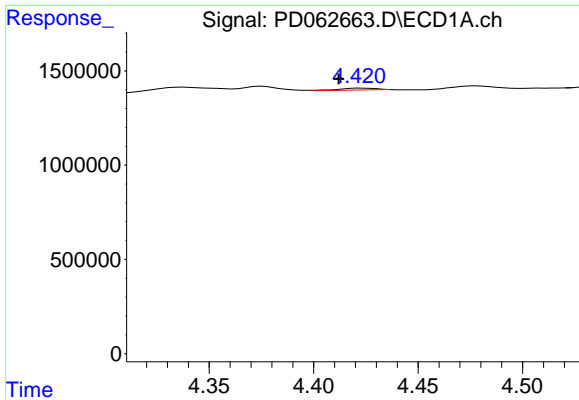
#1 Tetrachloro-m-xylene
 R.T.: 3.973 min
 Delta R.T.: 0.000 min
 Response: 239477760
 Conc: 19.72 ng/ml



#4 Heptachlor
 R.T.: 4.423 min
 Delta R.T.: -0.040 min
 Response: 147929
 Conc: 0.12 ng/ml

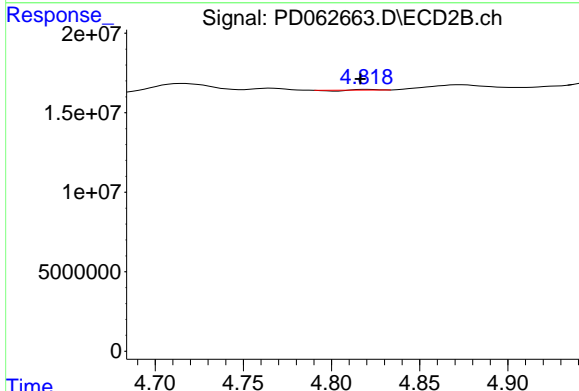


#4 Heptachlor
 R.T.: 5.160 min
 Delta R.T.: 0.005 min
 Response: 1222015
 Conc: N.D.

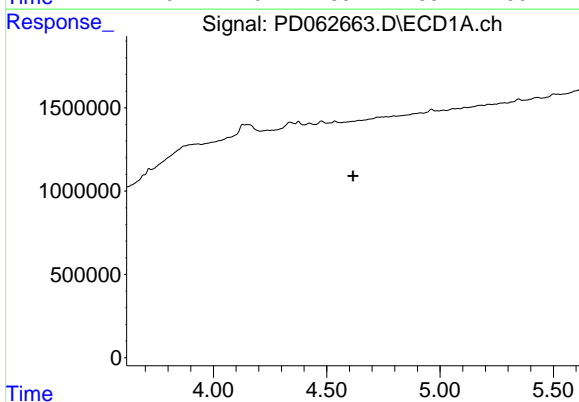


#6 beta-BHC
 R.T.: 4.423 min
 Delta R.T.: 0.012 min
 Response: 147929
 Conc: 0.24 ng/ml

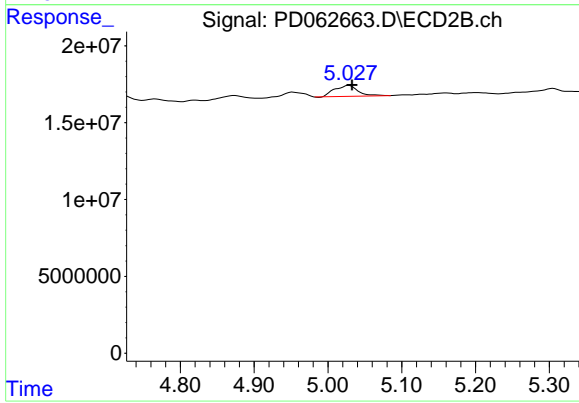
Instrument :
 ECD_D
 ClientSampleId :



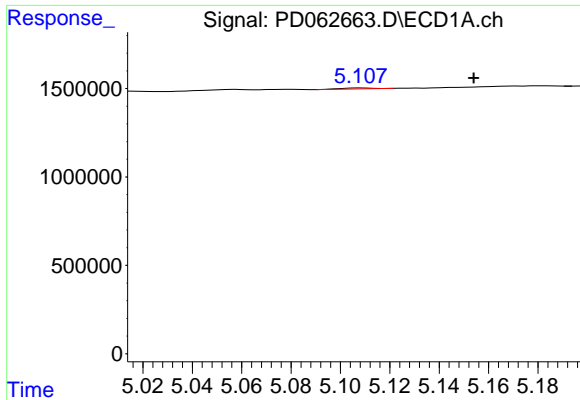
#6 beta-BHC
 R.T.: 4.820 min
 Delta R.T.: 0.004 min
 Response: 55191
 Conc: N.D.



#7 delta-BHC
 R.T.: 0.000 min
 Exp R.T. : 4.616 min
 Response: 0
 Conc: N.D.

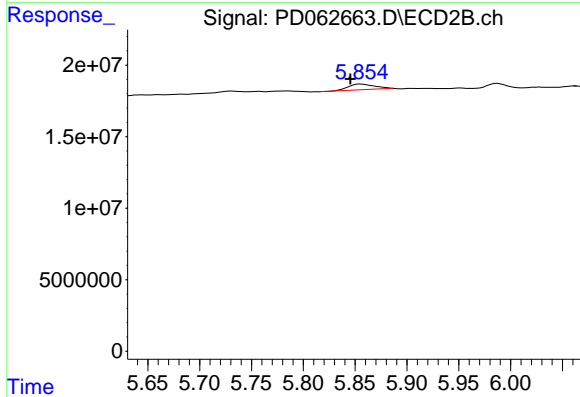


#7 delta-BHC
 R.T.: 5.029 min
 Delta R.T.: -0.004 min
 Response: 15725428
 Conc: 0.85 ng/ml

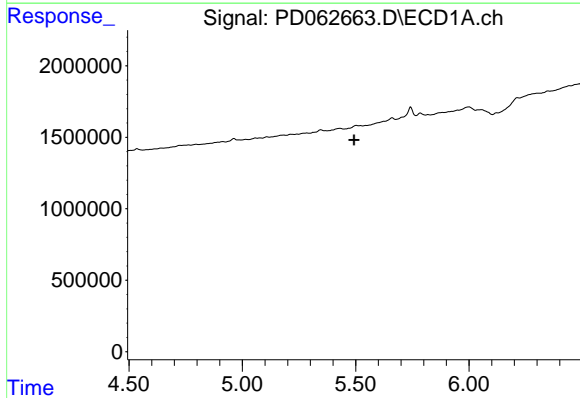


#8 Heptachlor epoxide
 R.T.: 5.109 min
 Delta R.T.: -0.045 min
 Response: 107474
 Conc: N.D.

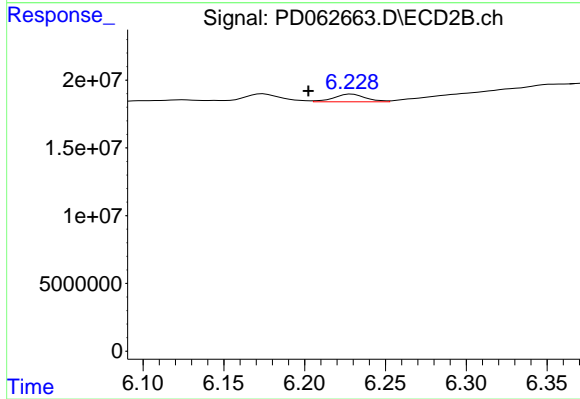
Instrument :
 ECD_D
 ClientSampleId :



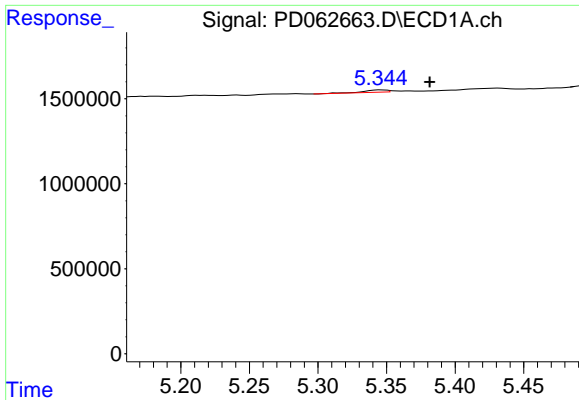
#8 Heptachlor epoxide
 R.T.: 5.855 min
 Delta R.T.: 0.010 min
 Response: 7805508
 Conc: 0.49 ng/ml



#9 Endosulfan I
 R.T.: 0.000 min
 Exp R.T. : 5.494 min
 Response: 0
 Conc: N.D.

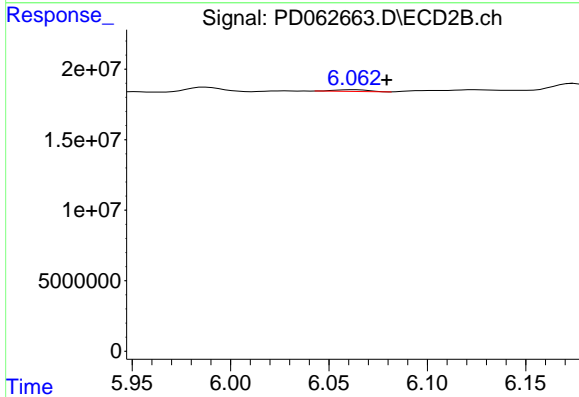


#9 Endosulfan I
 R.T.: 6.229 min
 Delta R.T.: 0.027 min
 Response: 7745389
 Conc: 0.53 ng/ml

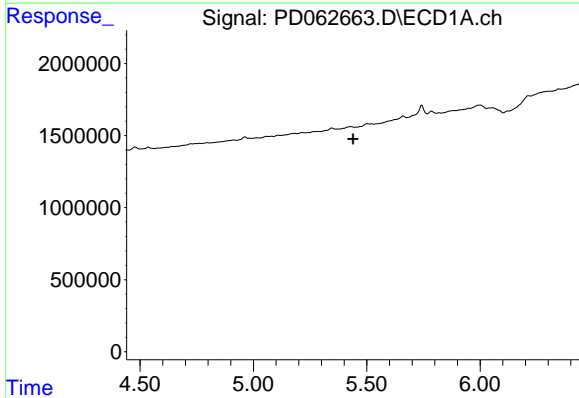


#10 trans-Chlordane
 R.T.: 5.346 min
 Delta R.T.: -0.035 min
 Response: 203351
 Conc: 0.16 ng/ml

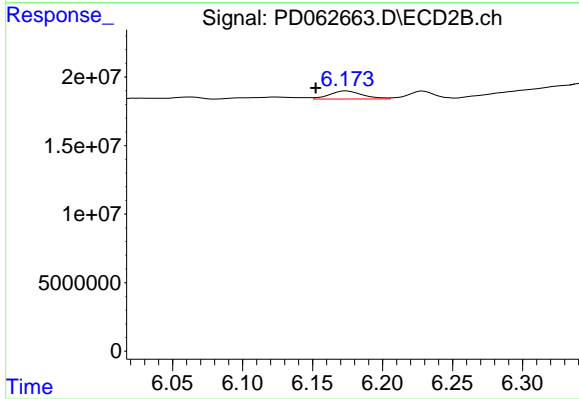
Instrument :
 ECD_D
 ClientSampleId :



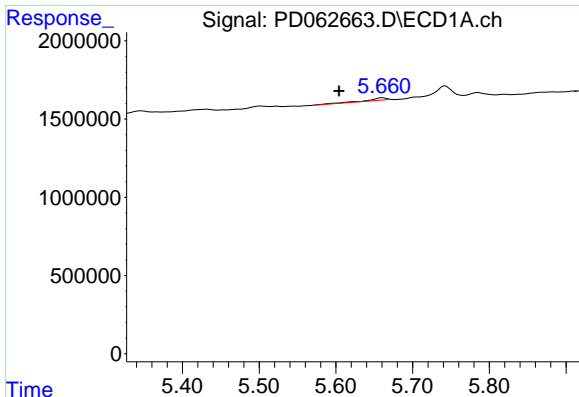
#10 trans-Chlordane
 R.T.: 6.063 min
 Delta R.T.: -0.017 min
 Response: 1443635
 Conc: N.D.



#11 cis-Chlordane
 R.T.: 0.000 min
 Exp R.T. : 5.440 min
 Response: 0
 Conc: N.D.



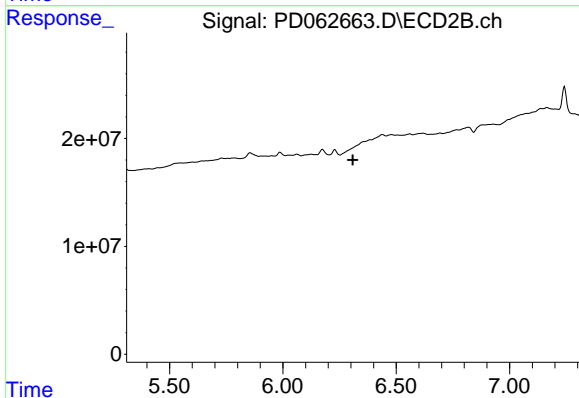
#11 cis-Chlordane
 R.T.: 6.175 min
 Delta R.T.: 0.022 min
 Response: 9682070
 Conc: 0.62 ng/ml



#12 4,4'-DDE

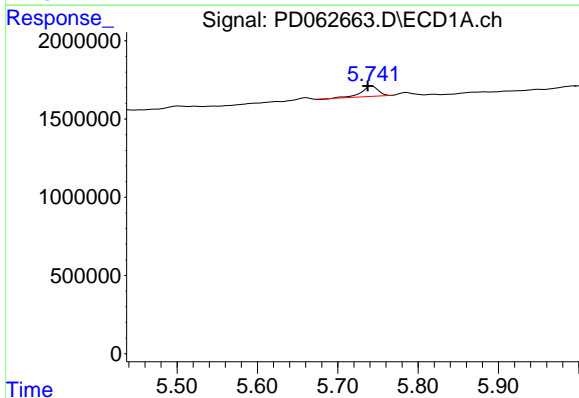
R.T.: 5.661 min
 Delta R.T.: 0.057 min
 Response: 314166
 Conc: 0.25 ng/ml

Instrument :
 ECD_D
 ClientSampled :



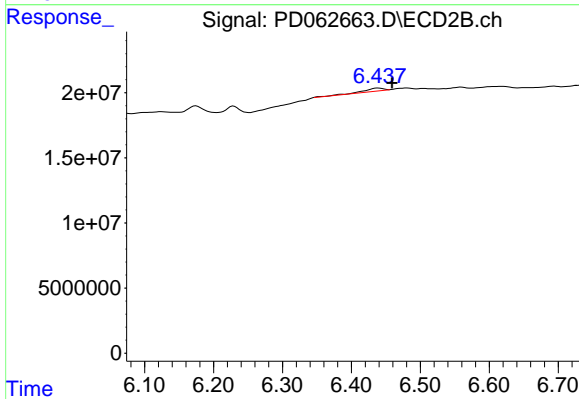
#12 4,4'-DDE

R.T.: 0.000 min
 Exp R.T. : 6.309 min
 Response: 0
 Conc: N.D.



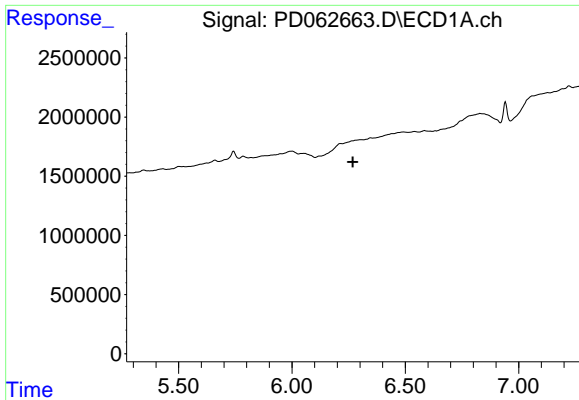
#13 Dieldrin

R.T.: 5.743 min
 Delta R.T.: 0.005 min
 Response: 945394
 Conc: 0.75 ng/ml



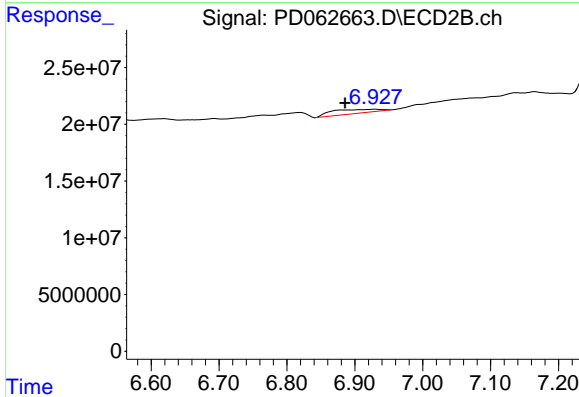
#13 Dieldrin

R.T.: 6.439 min
 Delta R.T.: -0.020 min
 Response: 4404954
 Conc: 0.28 ng/ml

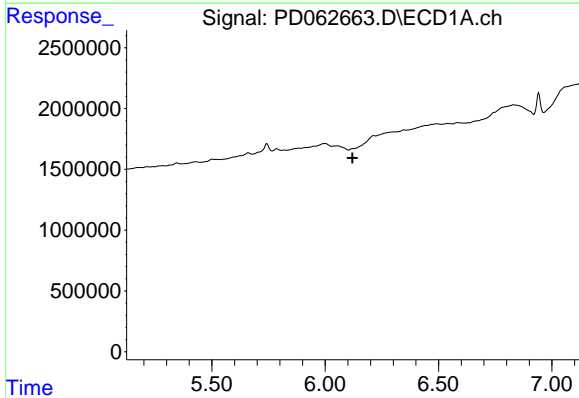


#15 Endosulfan II
 R.T.: 6.214 min
 Delta R.T.: -0.054 min
 Response: -42025
 Conc: N.D.

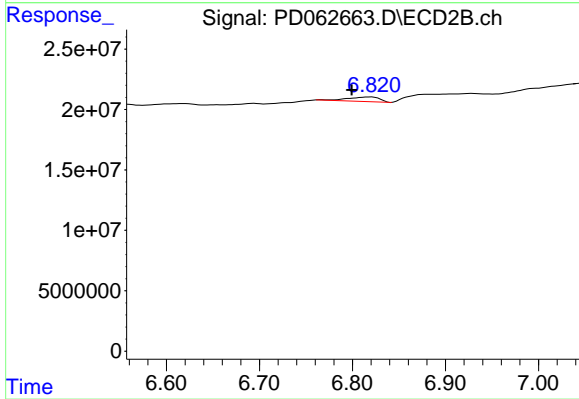
Instrument :
 ECD_D
 ClientSampleId :



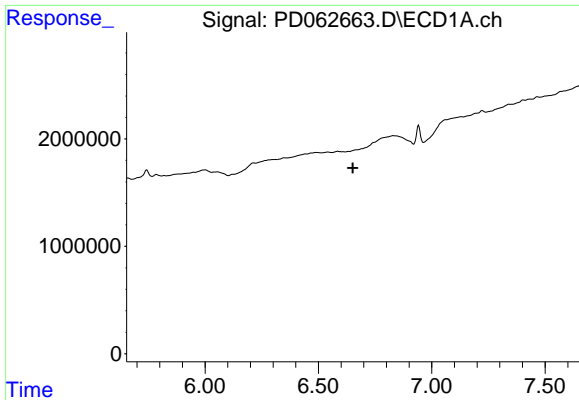
#15 Endosulfan II
 R.T.: 6.930 min
 Delta R.T.: 0.044 min
 Response: 17172584
 Conc: 1.37 ng/ml



#16 4,4'-DDD
 R.T.: 0.000 min
 Exp R.T. : 6.121 min
 Response: 0
 Conc: N.D.

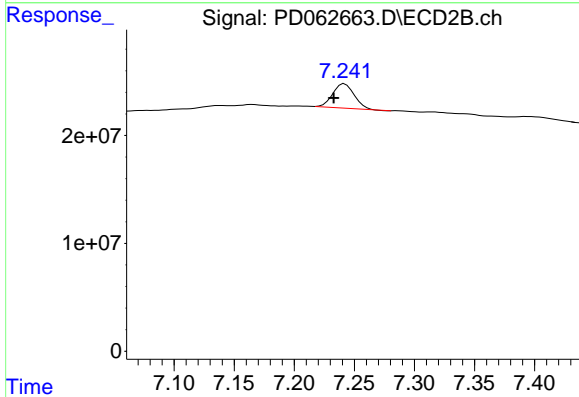


#16 4,4'-DDD
 R.T.: 6.820 min
 Delta R.T.: 0.021 min
 Response: 9087661
 Conc: 0.73 ng/ml

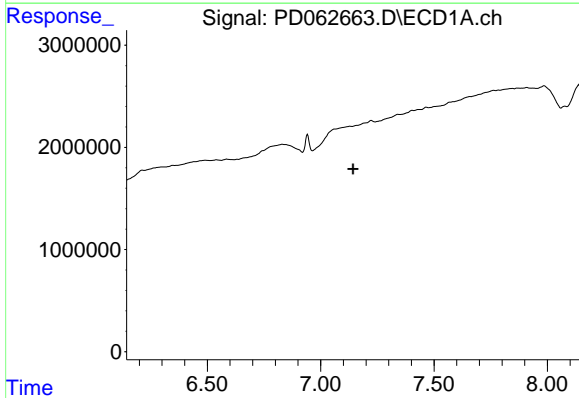


#19 Endosulfan Sulfate
 R.T.: 0.000 min
 Exp R.T. : 6.651 min
 Response: 0
 Conc: N.D.

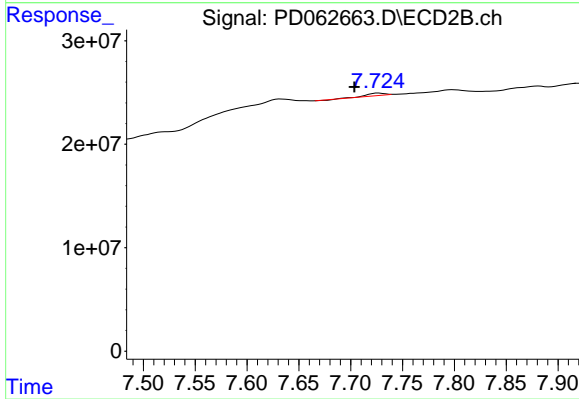
Instrument :
 ECD_D
 ClientSampleId :



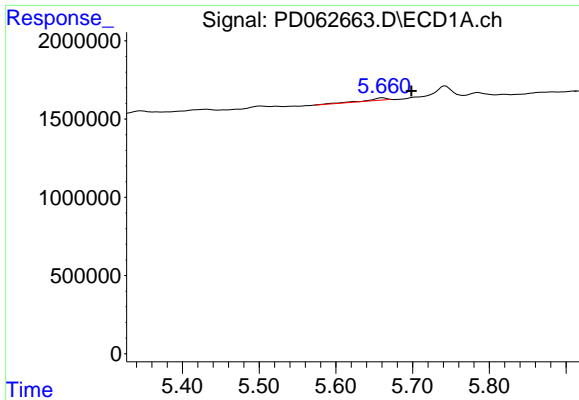
#19 Endosulfan Sulfate
 R.T.: 7.242 min
 Delta R.T.: 0.009 min
 Response: 28198573
 Conc: 2.21 ng/ml



#21 Endrin ketone
 R.T.: 0.000 min
 Exp R.T. : 7.143 min
 Response: 0
 Conc: N.D.

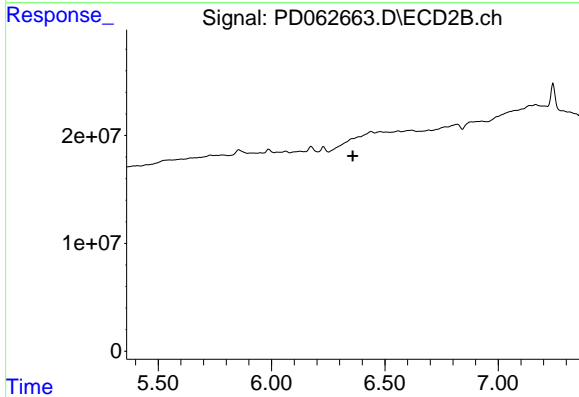


#21 Endrin ketone
 R.T.: 7.727 min
 Delta R.T.: 0.023 min
 Response: 3270007
 Conc: 0.27 ng/ml

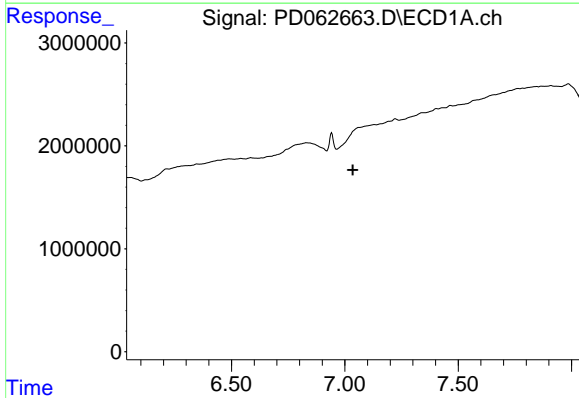


#22 Toxaphene-1
 R.T.: 5.661 min
 Delta R.T.: -0.038 min
 Response: 314166
 Conc: 42.15 ng/ml

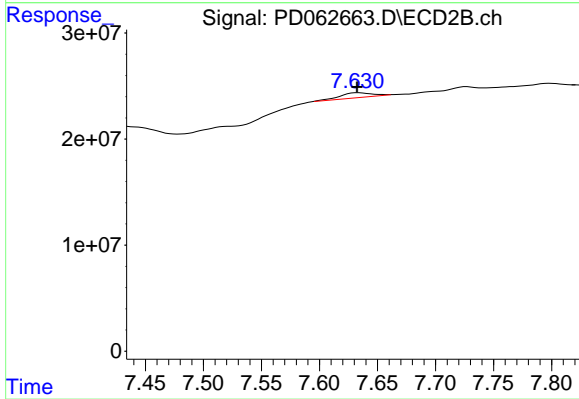
Instrument :
 ECD_D
 ClientSampleId :



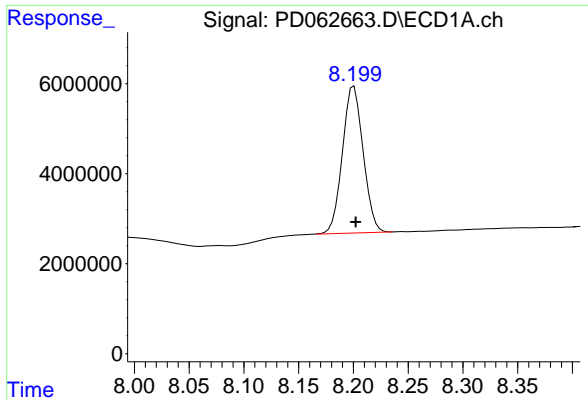
#22 Toxaphene-1
 R.T.: 0.000 min
 Exp R.T. : 6.359 min
 Response: 0
 Conc: N.D.



#26 Toxaphene-5
 R.T.: 0.000 min
 Exp R.T. : 7.036 min
 Response: 0
 Conc: N.D.



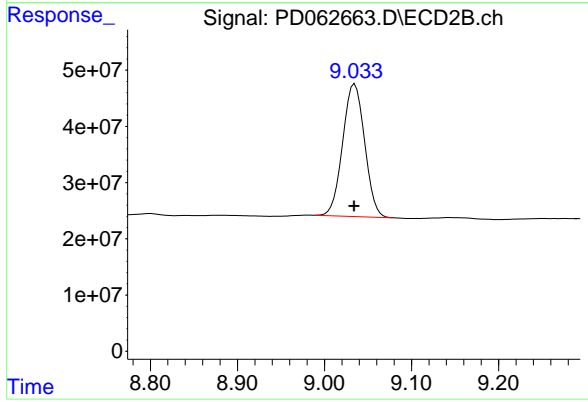
#26 Toxaphene-5
 R.T.: 7.633 min
 Delta R.T.: 0.000 min
 Response: 9906185
 Conc: 73.43 ng/ml



#27 Decachlorobiphenyl

R.T.: 8.201 min
Delta R.T.: -0.002 min
Response: 42870890
Conc: 39.94 ng/ml

Instrument :
ECD_D
ClientSampleId :



#27 Decachlorobiphenyl

R.T.: 9.035 min
Delta R.T.: 0.000 min
Response: 413005636
Conc: 37.84 ng/ml