

Data Path : Z:\pestpcbsrv\HPCHEM1\ECD_D\Data\PD043021\
 Data File : PD062630.D
 Signal(s) : Signal #1: ECD1A.ch Signal #2: ECD2B.ch
 Acq On : 30 Apr 2021 15:01
 Operator : AR\AJ
 Sample : M2177-12MSD
 Misc :
 ALS Vial : 24 Sample Multiplier: 1

Instrument :
 ECD_D
 ClientSampled :
 BG576MSD

Manual Integrations
 APPROVED

Ankita
 5/3/2021 3:13:21 PM

Integration File signal 1: autoint1.e
 Integration File signal 2: autoint2.e
 Quant Time: Apr 30 23:18:18 2021
 Quant Method : Z:\pestpcbsrv\HPCHEM1\ECD_D\Method\PD042921CLP.M
 Quant Title : GC Extractables
 QLast Update : Fri Apr 30 02:49:51 2021
 Response via : Initial Calibration
 Integrator: ChemStation

Volume Inj. : 1 µl
 Signal #1 Phase : ZB-MR1 Signal #2 Phase: ZB-MR1
 Signal #1 Info : 30M x 0.32mm x0.2 Signal #2 Info : 30M x 0.32mm x 0.50µm

	Compound	RT#1	RT#2	Resp#1	Resp#2	ng/ml	ng/ml

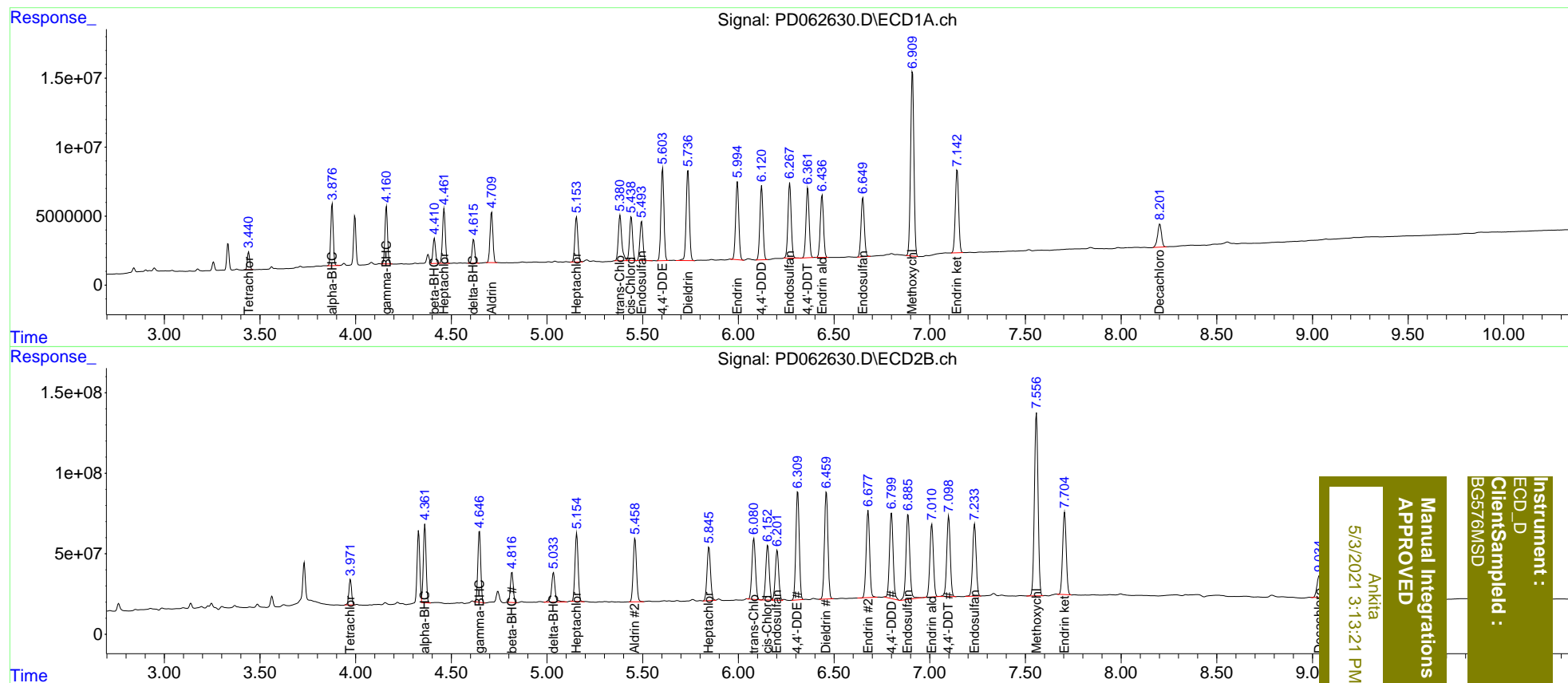
System Monitoring Compounds							
1)	SA Tetrachlo...	3.441	3.973	11430035	155.0E6	11.939	12.768
2)	SA Decachlor...	8.203	9.036	23869797	213.4E6	22.238	19.552
Target Compounds							
2)	A alpha-BHC	3.877	4.361	40755818	486.8E6	29.109	25.743m
3)	MA gamma-BHC...	4.161	4.647	38883749	462.1E6	29.108	26.747
4)	MA Heptachlor	4.462	5.155	40391861	480.9E6	31.457	27.632
5)	MB Aldrin	4.711	5.460	37982535	471.2E6	29.160	27.243
6)	B beta-BHC	4.411	4.817	17398935	195.2E6	28.024	25.568
7)	B delta-BHC	4.616	5.034	16705068	234.0E6	12.277	12.611
8)	B Heptachlo...	5.154	5.846	35536277	423.5E6	28.998	26.403
9)	A Endosulfan I	5.494	6.203	31391749	386.1E6	28.074	26.327
10)	B trans-Chl...	5.382	6.081	40588423	482.2E6	32.376	29.446
11)	B cis-Chlor...	5.440	6.153	34894368	422.1E6	28.417	27.192
12)	B 4,4'-DDE	5.604	6.310	72844521	830.6E6	58.861	53.005
13)	MA Dieldrin	5.737	6.460	76437461	839.9E6	60.640	54.163
14)	MA Endrin	5.995	6.678	64459594	680.3E6	60.921	54.546
15)	B Endosulfa...	6.268	6.887	63444692	728.5E6	61.174	58.211
16)	A 4,4'-DDD	6.122	6.800	60425399	708.9E6	60.682	57.039
17)	MA 4,4'-DDT	6.362	7.099	57916916	639.2E6	61.835	53.835
18)	B Endrin al...	6.438	7.011	53032616	582.5E6	59.437	53.389
19)	B Endosulfa...	6.651	7.234	51345481	580.6E6	51.365	45.499
20)	A Methoxychlor	6.910	7.558	161.0E6	1507.0E6	301.767	265.875
21)	B Endrin ke...	7.143	7.705	72388227	664.6E6	61.770	54.001

(f)=RT Delta > 1/2 Window (#)=Amounts differ by > 25% (m)=manual int.

Data Path : Z:\pestpcbsrv\HPCHEM1\ECD_D\Data\PD043021\
 Data File : PD062630.D
 Signal(s) : Signal #1: ECD1A.ch Signal #2: ECD2B.ch
 Acq On : 30 Apr 2021 15:01
 Operator : AR\AJ
 Sample : M2177-12MSD
 Misc :
 ALS Vial : 24 Sample Multiplier: 1

Integration File signal 1: autoint1.e
 Integration File signal 2: autoint2.e
 Quant Time: Apr 30 23:18:18 2021
 Quant Method : Z:\pestpcbsrv\HPCHEM1\ECD_D\Method\PD042921CLP.M
 Quant Title : GC Extractables
 QLast Update : Fri Apr 30 02:49:51 2021
 Response via : Initial Calibration
 Integrator: ChemStation

Volume Inj. : 1 µl
 Signal #1 Phase : ZB-MR2 Signal #2 Phase: ZB-MR1
 Signal #1 Info : 30M x 0.32mm x0.2 Signal #2 Info : 30M x 0.32mm x 0.50µm



Instrument :
 ECD_D
 ClientSampleId :
 BG576MSD

Manual Integrations
 APPROVED
 Ankita
 5/3/2021 3:13:21 PM